

# COMMUNITY NEWS

No. 983 Ph: 4374 1039 Mo: 0412 669 649 Email: enquiries@cnews1.com.au Web: cnews1.com.au 20th March 2026

## Call to bring Public Toilets up to Modern Standards

In June 2024 Council received the final Central Coast Public Toilet Strategy that had been prepared by consultants Conybeare Morrison International Pty Ltd. and in September 2024 Council released the Public Toilet Strategy Overview

Toilets in the district were assessed as follows:

### *(Inspected for report)*

- Somersby Public Toilet (24/7), Level of Use - Low
- Kulnura Memorial Hall Public Toilet, Level of Use - Not Assessed

### *(Not inspected for report)*

- Waratah Road Public Toilet, Mangrove Mountain (24/7), Level of Use - Not Assessed
- Spencer Waterfront Public Toilet (24/7), Level of Use - Not Assessed,
- Jack Gear Reserve Public Toilet, Yarramalong, Level of Use - Not Assessed
- Fred Pinkstone Oval, Peats Ridge - No Existing Toilets

Jack Gear Reserve was designated "General public toilet," and the others were designated "General public toilets in remote areas".

Only the Kulnura, Jack Gear and Spencer toilets were rated Accessible.

The following work was planned:

- Somersby Public Toilet - improve parking, lighting, consider CCTV
- Kulnura Memorial Hall Public Toilet - demolish and relocate closer to Greta Rd (Type A)
- Waratah Road Public Toilet - No planned work
- Spencer Waterfront Public Toilet - No planned work
- Jack Gear Reserve Public Toilet - No planned work
- Fred Pinkstone Oval, Peats Ridge - New Toilets (Type A)

Realising that no improvements were planned for the Mangrove Mountain toilets, residents approached Council with the aim of having the existing toilets removed and replaced with a new toilet block in line with Council's



Waratah Rd toilets at Mangrove Mountain - Effluent leaking from the toilet with the playground nearby in the background

new designs.

Monitoring by residents and Council showed that the existing toilets were heavily used, averaging over 50 visits per day.

Council agreed to include the Mangrove Mountain toilets in the program of works but not until 2028.

Residents request the existing "drop pit" toilets be replaced much sooner, preferably in the 2026-27 financial year, with a new building incorporating:

- New, three toilet building
- Septic, flushing system with pump-out
- Two unisex ambulant toilets and one accessible toilet
- Sanitary pad and nappy disposal facilities and waste bins
- Baby change table
- Internal hand basins
- Hand air dryers
- Toilet paper; soap dispensers; mirrors
- Night and day lighting inside and out
- Level street access without ramps
- Facing Waratah Road with privacy

screen

- Clear street signage

Residents are urged to contact Council and ask to have the Mangrove Mountain toilets upgraded as requested. Submit requests on-line [https://centralcoastcouncil.custhelp.com/app/utils/login\\_form](https://centralcoastcouncil.custhelp.com/app/utils/login_form) or phone **4306 7900**

Emails to State Government MP's would also help to draw attention to the issue.

There are two ways to be fooled. One is to believe what isn't true; the other is to refuse to believe what is true.

*Soren Kierkegaard*

## STOP!

Next issue Published  
3rd April 2026

**\*\* DEADLINE \*\***  
**\*\* 27th March '26 \*\***

Send adverts & copy by  
email, website or post.  
Email, website, FB or  
phone for enquiries

# Seniors' Stories

Seniors' Stories is a writing competition aimed at celebrating the lives and contributions of seniors by giving them an opportunity to share their own short stories about their life experiences.

NSW Seniors Card introduced the Seniors' Stories writing competition in 2013 as a way of recognising and valuing the experiences of NSW seniors and building connections between the young and old.

For each edition the top 100 stories are selected and published by NSW Seniors Card and distributed to the authors and libraries across the state.

These stories illustrate the substantial contributions made by older people and

emphasise the need to ensure seniors are afforded ongoing opportunities to participate in our community and impart their knowledge and wisdom to younger generations.

NSW Seniors Card is delighted to unveil the theme for this year's Seniors' Stories Volume 12: Neighbours, Strangers, and the People In Between — an invitation to explore the rich tapestry of human connection through the eyes and experiences of seniors across the state.

The 2026 writing competition will run from 2 April to 14 May, and we're calling on all NSW Seniors Card and Senior Savers Card members to share their stories. The top 100 entries will be published in this year's anthology, with authors also offered the opportunity to have their stories printed in their

native language — a celebration of the cultural diversity that shapes our communities.

*An Extract from Seniors' Stories Volume 9*

*A Cautionary Tale of Jim (not his real name)*

*Carole Handel, Faulconbridge 2776*

Jim lived across the street. He was a quiet inoffensive man with an attractive wife and three kids. He had a good job, which required him to work long hours. It was quite likely, that he only saw his children on the weekends when they were small. He had a nice house, which was bigger and newer than ours.

We looked across the road with envy. Almost every weekend of the year, out would come the lawnmower, lawn edger, whipper snipper and rake.



**ALICE initiative**  
All-inclusive care for older people

**Health Connections Kiosk**

## A neighbourhood model of care for the Central Coast community

**When:** 1st and 3rd Mondays of each month  
9am-12pm

**Where:** Community Health Centre,  
13 Nurses Road, Central Mangrove 2250

**Cost:** Free

Visit us at the Health Connections Kiosk for information and signposting to health services and support that will help you to remain well and independent at home in your neighbourhood.

The ALICE Health Connections Kiosk provides:

- ✓ Reliable information about available local services
- ✓ Trusted support with forms, applications and referrals
- ✓ Advice and guidance from health professionals



Drop in or book by calling 0477 752 365 or use the QR code.

For further information, please contact the ALICE CEO Fiona Morrison, at [fiona.morrison1@health.nsw.gov.au](mailto:fiona.morrison1@health.nsw.gov.au)

DEC25/12 Catalogue CCI3056D-E



## Heaths Rural Fencing

Post & Rail • Chain Wire  
Wire Stock • Repairs  
Animal Security

**Ph: 0492 923 355**

## MANGROVE MOUNTAIN PHARMACY

Monday - Friday: 9am-7pm Saturday & Sunday: Closed

- ◆ Free webster packing & all your pharmacy needs
- ◆ Vaccination
- ◆ Household goods and gifts
- ◆ Parcel point outlet



3/1 Waratah Road, Mangrove Mountain, NSW 2250  
Phone: (02) 4374 1457 Fax: (02) 4374 1479  
Email: [mangrovetmparmacy@gmail.com](mailto:mangrovetmparmacy@gmail.com)

## BEN FANELLI CONTRACTING




- DAM CONSTRUCTION & REPAIRS • LAND CLEARING & MULCHING
- DRIVEWAY CONSTRUCTION & REPAIRS • HORSE ARENA'S & SHED PAD'S
- SLASHING, MANURE SPREADING, DISCING & ROTARY HOEING
- HAULAGE • LANDSCAPE SUPPLIES/FIREWOOD

EXCAVATOR'S RANGING FROM 5-30 TONNE, POZI-TRAC, BACKHOE, GRADER, DOZER, TRAXCAVATOR, SMOOTH DRUM ROLLER TRUCK & DOG/SEMI TRAILER, 100 HORSE POWER TRACTOR

**0499 780 027**

He spent the morning or afternoon working hard. His garden was always immaculate. Then it was time to wash and polish his car.

Jim's wife took the children to dancing lessons and sport practice and games because Jim was too busy keeping his garden and car in perfect condition. This was the pattern of his life, week after week, month after month, year after year.

However, one year, disaster struck. Jim found a lump in his groin. He stopped mowing his lawn and washing his car because he was in hospital.

The man who returned to the house

was but a shadow of his former being. Jim only lived a few months more before he passed away. It was cancer.

Jim was a neighbour and we watched his life play out before our eyes. We weren't close friends but his death had a huge impact on our lives. We found out that he and his wife had been planning their first overseas holiday. Jim was just 43.

We were younger, with not much money. We drove an old car and had a very small house but even then, we were still living life. We made time to take a quick camping holiday, we visited friends, took trips to the beach

and enjoyed picnics in the park. Since Jim's death we have lived very full lives. Each time we questioned whether we should be taking yet another overseas trip, we would remember Jim.

We would begin our holiday planning and redraw the mortgage loan again. Our forties and fifties have been full of wonderful adventures. We didn't want to have any regrets. I'm sure Jim wished he had played with his kids more often, watched the soccer games and taken the family on holidays rather than washing the car.

But how do you find the balance between planning and preparing for the future but not putting off the dreams you have until it's too late?

This is the delicate balancing act that is called living. It's the choices that most of us will make because money and opportunities are not infinite.

My husband and I are both sixty-one and working full time. I say grasp life and if we end up moving in with the children, well that's life.

You still have time for adventures. It doesn't have to be a polar expedition you are planning for but if you have always wanted to be a ballerina, paint a landscape or play the drums, then you should do it.

Spread the word to your friends and family, plan to live while you can and don't put it off until tomorrow.

*Information from Seniors Card NSW*



## **Dr. S. ANANDASIVAM**

(ANAND)

**MBBS, FRACGP, AMCC**

For Doctor Appointments:  
Monday - Friday 9am- 5pm

*Laverty Pathology Service  
Available:*

*Monday to Friday  
8:30am till 1:30pm*

***Medicare Bulk Billing***

**1639 Nurses Road  
Central Mangrove, 2250  
02 4373 1914**



## **Local Solar Power Experts**

**Living Off Grid  
Has Never Been Easier**

Brooklyn Trade Services are your local solar electricians, for both on and off-grid systems.

Our technicians are certified to install state-of-the-art solar and battery systems which are great for the environment as well as your home and or business.

Call us for a chat:

**1300 319 419**

[www.btselectric.com.au/bts-energy](http://www.btselectric.com.au/bts-energy)



# Hearing Loss and Its Connection to Overall Health

Hearing loss is often thought of as simply an ear problem, but research increasingly shows that it is closely linked with many other aspects of health. Identifying and treating hearing loss early may play an important role in maintaining overall wellbeing.

Studies have found a strong association between hearing loss and cognitive decline, including conditions such as Alzheimer's disease and dementia. When hearing is reduced, the brain receives less sound stimulation and people may withdraw from

conversations. Over time, this reduced mental engagement may contribute to cognitive problems.

Hearing loss is also linked with a higher risk of falls. Hearing helps people stay aware of their surroundings and supports balance. When sounds are not clearly heard, individuals may have difficulty judging their environment, increasing the chance of falling and injury.

Another important concern is mental health. People with untreated hearing loss often struggle in social situations and may avoid conversations or gatherings. This isolation can lead to loneliness, stress, and depression.

Research has also shown connections between hearing loss and medical conditions such as cardiovascular disease and chronic kidney disease. The inner ear depends on healthy blood flow and nerve function, so diseases

affecting blood vessels can also affect hearing.

In addition, studies suggest that people with hearing loss may experience higher rates of hospitalisation and overall health complications. When communication becomes difficult, it can affect medical care, safety, and daily functioning.

Some research has even linked untreated hearing loss with a higher risk of mortality, highlighting how important hearing health is to general wellbeing.

The encouraging news is that hearing loss can often be managed effectively. Regular hearing checks, early diagnosis, and appropriate treatment such as hearing aids can improve communication and quality of life. Addressing hearing loss may also help reduce some of the broader health risks associated with it.

Protecting your hearing is therefore an important step in protecting your overall health.

*Jithin Punnakuzhathil Jacob*  
 BSc Sp&Hg, MSc Audiology, MACAud,  
 Qualified Tinnitus Retraining Therapist.  
 Director and Audiologist  
 Welfast Hearing Pty Ltd  
 Wyee, Morisset, Central Mangrove,  
 Woongarra, Mangrove Mountain  
 Ph:0243115511  
<http://welfasthearing.com.au>

## HOLY TRINITY CATHOLIC CHURCH

COME AND JOIN US TO WORSHIP AT OUR BEAUTIFUL CHURCH

LOCATED ON WISEMANS FERRY ROAD 3 MINUTES NORTH OF SPENCER VILLAGE

*Spencer*



Stations of the Cross, 10am Good Friday 3rd April.

Monthly Mass for April 4pm Saturday 11th April.

After April, monthly Mass is set for the first Saturday each month at 4pm

We would love the opportunity to meet you and welcome you to our community. Arrive earlier and enjoy a picnic under a shady tree in our beautiful grounds.



4200 WISEMANS FERRY RD, SPENCER

JOIN US ON FACEBOOK FOR THE LATEST INFORMATION

ANNE 0412201851, PETER 0407971340



### OUR SERVICES INCLUDE:

- Custom built homes • Granny flats
- Extensions • Carpentry services
- Renovations • Decks & Pergolas
- Waterproofing & Bathroom renovations
- Disabled modifications
- Asbestos removal
- Building maintenance

**Dane Meredith | Builder**  
 0420906499  
[dane@ebhbuilding.com.au](mailto:dane@ebhbuilding.com.au)

# OUTDOOR CINEMA

AT THE HOME OF THE MOUNTAIN DEVILS

BLOODTREE OVAL, BLOODTREE ROAD,  
MANGROVE MOUNTAIN



**18 APRIL 2026**

**\$5 PER PERSON**

**FOOD AND SNACKS AVAILABLE**

**MOVIE STARTS 6:30PM**

**THIS IS AN ALCOHOL FREE  
COMMUNITY EVENT.**


**ALL ARE WELCOME!**

Tickets available at the canteen, at [www.mdfc.net.au](http://www.mdfc.net.au) or at the door.

# CWA of NSW Mangrove Mountain Evening Branch - President's Seasonal Update

## Our Branch Beginnings and Growth

Our branch was established in 2018, with the specific aim of creating an evening branch to encourage younger women to join the Country Women's Association. It has been a pleasure to welcome a wonderful group of ladies to our branch, and we are especially grateful for the support they provide to



**Local**  
Qualified and Insured Arborist  
Felling, pruning, deadwooding  
Free Quotes

**Contact Asher**  
**0481 353 982**  
[abenvirotrees@gmail.com](mailto:abenvirotrees@gmail.com)

our older members, particularly in the areas of social media and promotion.

## How We Meet and Connect

We are an evening branch that meets twice a month in person and twice a month online via ZOOM. The use of ZOOM allows us to invite other branches to join our discussions and share updates on their activities. We actively collaborate with the thirteen other branches along the coast and are always ready to step in and assist when needed.

## Our Mission and Community Involvement

While many people associate the Country Women's Association with jam and scones, our association is dedicated to much more. We advocate to government on behalf of women's needs, supporting women, children, and families in the process. We also network with other community groups along the coast, working together to strengthen the fabric of our society.

## Upcoming Events and Activities

The coming year is set to be an exciting one for our branch. We are preparing for our annual joint Poet's Breakfast at the Church, which helps support both the church and our community initiatives.

You'll find us at six of the Mangrove

Monthly Markets in February, May, June, August, October, and December in 2026.

The Peat's Ridge Country Women's Association will also be participating in these markets on the months we are not attending, allowing each group to coordinate their calendars effectively.

In addition, we will be holding a jam-making session in Kariong with the Kariong Eco Gardens. More details to follow soon.

We will be organising a bus trip into the mountains for the fourteen branches of the Country Women's Association Northumberland Group in June. This trip will focus on agricultural and environmental topics of interest to our members.

## Our Newsletter and Communication

We would like to extend our sincere thanks to our younger members for their efforts in establishing our newsletter. This initiative provides a fantastic platform to promote our vibrant branch of the Country Women's Association Mangrove Mountain. Through the newsletter, we hope to enhance communication with women who are interested in meeting and socialising here in the mountain community.

Our next issue will be out in March 2026. Please submit your stories, yarns, recipes, chuckles and notes of interest to: [publishmmeb@gmail.com](mailto:publishmmeb@gmail.com)

## Donation Drive – Supporting Fiji

\* Post & Rail  
\* Fence  
Painting  
\* Repairs  
\* Bobcat Hire

# Ricks Rural Fencing

\* Chain Wire  
\* Wire Stock  
\* All types of rural fencing

*Servicing the Mountain for over 40 Years*

**Phone Rick 43731155**  
**or text 0428605419**

# Horse Vet

Somersby - Mangrove & Central Coast area



**Brett Warren**

Mobile: 0428 215 599  
Home: 4374 1640

Email: [brettvet@ozemail.com.au](mailto:brettvet@ozemail.com.au)  
[www.centralcoastequine.com.au](http://www.centralcoastequine.com.au)

**Consultations by appointment**  
Mobile X-ray, endoscopy, purchase and insurance exams

# CNS Electrical

Lic No. 214132C



Your local Electrical Contractors on the mountain, specialising in Rural, Domestic, Commercial and Industrial works, including:  
Excavation, Trenching, Mains & Sub-mains, Voltage Calculations & Future Planning.

**Call Cameron for a quote on: 0438 695 600**  
Office: 0480 467 894  
Email: [admin@cnsselectrical.com.au](mailto:admin@cnsselectrical.com.au)



**SOMERSBY ANIMAL HOSPITAL**

Dr. Robin Crisman & the SAH veterinary team  
**79-b Howes Road, Somersby**

- A full service, purpose built veterinary hospital.
- Large and small animal consults incl. horse repro.
  - House and farm visits.

**Call us on: 4372 1799**  
[www.sahvet.com.au](http://www.sahvet.com.au)  
visit us on Facebook



Judy at the Country Fair stall

**Kids**

We're proud to support the Gwandalan Lions' Fiji Family Project, helping the Vatutoko Primary School, Nubuyanitu village, and surrounding

communities.

- The project focuses on:
  - School bathroom repairs
  - Outdoor shelter
  - Flood drain works
  - Community hall improvements
- Our branch is a welcoming and active group of ladies, and we warmly encourage anyone with a spare Tuesday

night to come along and join us.

Please don't hesitate to reach out if there is any way we can assist you.

Judy B  
Branch President



Country Women's Association  
of New South Wales

# MANGROVE PRODUCE AND HARDWARE

1668 Wisemans Ferry Rd, Central Mangrove (just 1km from the Crossroads)

**DID YOU KNOW WE DO FREE DELIVERIES  
AROUND THE MOUNTAIN DISTRICT?**

**CALL US TO FIND OUT WHICH DAY  
WE ARE IN YOUR AREA.**

**PHONE 4373 1259 TODAY**

**\*CONDITIONS APPLY**



- ◆ Horse Feed
- ◆ Fertiliser
- ◆ Paint
- ◆ Pet Food
- ◆ Timber
- ◆ Plumbing
- ◆ Bird Seed
- ◆ Hardware
- ◆ Fencing
- ◆ Vet Supplies
- ◆ Hand Tools
- ◆ Electric
- ◆ Chemicals
- ◆ Power Tools
- ◆ Fencing

Mon-Fri: 7:30am -5:00pm  
Sat: 8:00am -2:00pm

**Ph: 43731259**

SHOP ONLINE AT  
[www.tuckersstore.com.au](http://www.tuckersstore.com.au)  
or [shop.truevalue.com.au](http://shop.truevalue.com.au)

# LOCAL YOUTH SET TO SOAR ACROSS THE SKIES

Congratulations George Nahum!  
George Nahum successfully passed his Recreational Pilot Licence flight test after proving to Ben Mink, the Head of Operations and Flight Examiner at the at Central Coast Aero Club, that he has

the right stuff!  
George is a resident of Mangrove Mountain and currently attends Kariong-Mountains High School after having completed primary school at Central Mangrove Public.



George Nahum (left) with examiner Ben Mink

# Home Reading Takes Off with Rocket Reading!

Our Rocket Reading home reading program has started with a blast! Already, seven of our students are well on their way to an outstanding achievement - reading every night!

But why is reading so important?

1. Builds critical thinking skills: Reading encourages students to think deeply about stories, sometimes by solving a character's problem. It strengthens their ability to see different perspectives.
2. Expands vocabulary: Reading introduces children to new and exciting words, spanning from imaginative language to scientific terms.
3. Boosts brainpower: Neuroscientists tell us that the more we read, the more parts of our brain are activated—giving our minds a thorough workout with lasting benefits.

**WARD Septics**  
and Water Tank Cleaning

- \* Large and Small Vac trucks
- \* Licenced plumber and drainer

**Call Paul 0438315514**

 **SepticCleaning.com.au**

**The Grass Cutters**

- Slashing
- Rock picking
- Farm cleaning and clearing
- Cultivation and more
- Obligation-free quotes



Call **0419 412 993**  
Email [pat@thegrasscuttersrus.com](mailto:pat@thegrasscuttersrus.com)

See us in action at: [thegrasscuttersrus.com](http://thegrasscuttersrus.com)

 20 Langford Drive,  
KARIONG

**4340 5154**

**Chiropractic    Massage**

**Health Coach    Acupuncture**

**Counsellor    Podiatrist**

HICAPS available  
Medicare EPC & Workers Comp accepted  
After hours appointments available

Like us on social media for  
the latest clinic news

**Caring for Kariong & the  
Mountain District for over 20yrs.**



**GOLDEN**  
BEAUTY BAR

Beauty,  
Cosmetic Tattooing,  
Eyelash Extensions  
& Makeup

Salon service & Mobile

**0437 016 592**  
Instagram: @golden\_beauty\_bar\_au

4. Reduces stress: In today's fast-paced world, reading can be a relaxing escape that helps lower stress levels.
5. Develops writing skills: Good readers often become good writers, as they absorb language patterns and storytelling techniques.

A huge congratulations to our Rocket Reading champions! Keep up the fantastic work and happy reading!

Amy Ball  
Principal

Central Mangrove Public School  
1708 Wisemans Ferry Road Central Mangrove  
<https://centmangro-p.schools.nsw.gov.au>  
02 4373 1156

### Painting & Decorating Services



- All Remedial Works
- New and Repaint
- Wallpaper Installation
- Industrial, Commercial and Residential

email: [admin@sunlanddeco.com.au](mailto:admin@sunlanddeco.com.au)  
website: [www.sunlanddeco.com.au](http://www.sunlanddeco.com.au)

**Call Frank: 0411 185 717**

# WHAT'S ON

*The Springs*

**MARCH / APRIL**

Call us (02) 4373 1522

Fri 20 March	<i>Golf</i> - Twilight Golf + Carvery
Sat 28 March	<i>Restaurant</i> - Dinner Service
Sun 5 April	<i>Restaurant</i> - Easter Weekend Feast
Sat 11 April	<i>Restaurant</i> - Dinner Service
Fri 17 April	<i>Golf</i> - Twilight Golf + Wood-Fired Pizza

**BP Somersby**  
51 Smiths Rd, Somersby NSW 2250  
Opposite Somersby Primary School on Wisemans Ferry Rd  
PH: 1300 105 039 6am - 9pm 7 Days

• \$ Discount Fuel • AdBlue • Lott • U-HAUL • ATM •

**NEW high speed pumps**

- Unleaded with Ethanol (E10)
- Diesel
- Ultimate Diesel
- Ultimate 98 Unleaded
- Unleaded 91
- LPG Bottle refills

- Newspapers -
- Cold drinks & Snacks -
- Shop essentials -
- Bags of Ice -
- Pool Chlorine -
- Firewood -
- Trailer hire -

Free bulk deliveries

**Castrol Agri**

**\*FREE Barista Coffee**

\*With any fuel purchase over \$30. 1 per person per day. Limited time only.

# Dangerous trees a threat to life

It's too regular an occurrence, trees obstruction our local roads.

It's not always a storm or heavy rain that brings a tree down but when we do get storms, bushfires and

strong winds the roads can become an obstacle course that hamper vehicle movements and can delay emergency response crews.

Residents have notified Council

about problems posed by the many trees overhanging the roads in the district.

On 9/10/25 Council responded to one notification stating "The assessment of trees overhanging the roadway did not reach a level of risk to warrant works in accordance with Councils Risk Intervention Criteria."

Just two months later at the same location, on the 16/12/2025 a falling tree created a near disaster, just missing a large truck. The driver managed to react quickly enough when he saw the tree coming down and it was pure luck that the truck was not hit and there were no other vehicles in the vicinity at that time.

Traffic however soon built up from both directions and it took a combined effort from the people who were stuck in the traffic to clear the road. One person had a battery powered circular saw another a chainsaw, a third used their vehicle winch.

While some cut the tree others dragged the pieces off the road until it was clear and traffic could pass.

A police highway patrol was also caught up in the traffic jam and the officer was able to manage the traffic coming downhill towards the blind



Above: October 2025 - Council inspection deemed no action required  
Below: December 2025 - Tree across the road at the same location



Tree cut & road cleared to allow traffic to flow again



**ALL ASPECTS OF TREE WORK**



- Truck & Chipper
- Cherry Picker
- Excavator
- Forestry Mower

Local Arborist, friendly & experienced team. Insured

Tim - 0412 985 422 or [tijanotreeco@gmail.com](mailto:tijanotreeco@gmail.com)

Follow us  



• Site Levelling, • Land Clearing, • Horse Arenas,  
• Roadways, • Certified Fill Material

**Michael Schembri 0419 236 788**

corner located just before the fallen tree.

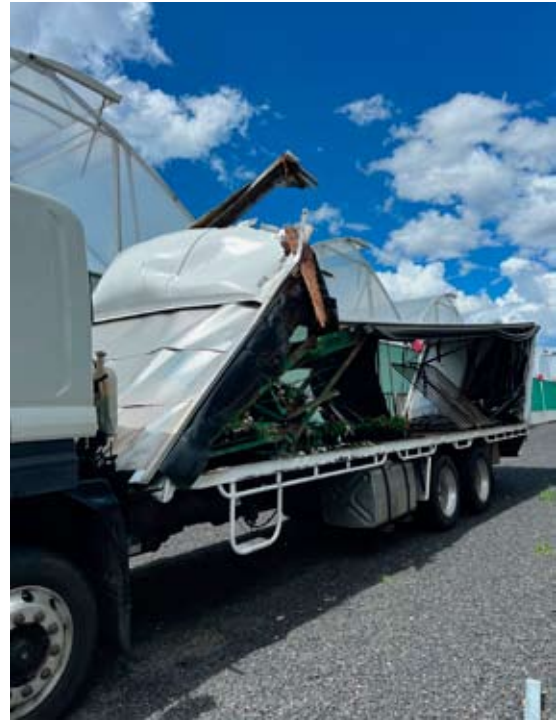
Throughout the district several cars have been damaged by falling trees and branches but to date, as far as we know, there have not been any injuries reported. Claims put to Council for damages are dealt with by their insurers and it is not known if any settlements have been awarded to claimants.

Liability for damage - The owner of the land is supposedly responsible for managing the trees growing on it. However if a healthy tree is blown over in a storm and it wasn't diseased or known to be dangerous the landowner is unlikely to be legally liable. On the other hand, if a tree was obviously dead, rotting, or leaning precariously and the property owner had been notified or asked to remove it, they may be liable for damages (this is a simple case study, anyone with concerns should seek advice from a legal practitioner).

So maybe if residents reported dangerous trees to Council highlighting the dangers they pose to life and property, Council might take a more proactive approach.

Submit requests to Council on-line:

[https://centralcoastcouncil.custhelp.com/app/utils/login\\_form](https://centralcoastcouncil.custhelp.com/app/utils/login_form)  
or phone 4306 7900



**Above & below:** Extensive damage to the body and a near miss for the driver **Left:** The car suffered damaged from the bonnet to the roof. Note the windscreen smashed in front of the passenger



**On The Go Constructions Pty Ltd**  
Specializing in the building of chicken sheds

Charlie Muscat is well known in the Industry, with over 12 years experience and has a reputation for quality workmanship.

- \* New Chicken Sheds \* Tunnel Conversions \* Roofing
- \* Machinery/Farm Sheds/Stables/Lofts/Piggeries \* Coolrooms
- \* All Fabricating services - All frames & trusses are fabricated by On The Go Constructions to Engineer specifications.

Call Charlie on 4374 1114 or 0408 684 719

**VISION FOR LIFE...**  
For all your concrete & pumping services, call Louis on 0418 409 576

CUSTOM DESIGN | BUILDINGS | EXTENSIONS | ALTERATIONS | DECKS |

**KDF**  
CONSTRUCTION

0410 100 616 | kim@kdfconstruction.com.au | LIC NO. 267735C

## Council showcases youth voices for Harmony Week 2026

Central Coast Council will recognise Harmony Week, aligning with the United Nations International Day for the Elimination of Racial Discrimination on 21 March through activities that promote respect and meaningful community participation.

This year, Council has worked closely with young people on the Coast to explore key themes in meaningful

and creative ways.

Through a series of workshops delivered at Wyong High School, students aged 12-18 took part in drawing, collage and storytelling activities designed to spark conversations about migration, culture, identity and belonging.

Community members are encouraged to view the students' works on display until Sunday 29 April in Wyong Town Centre, Council Libraries and the Erina Centre Exhibition Space.

*Central Coast Council Media Release*

## VALE Edward John Stephen Grant O.A.M.

08/12/1941 – 22/02/2026

Eddie and Joan moved to Waratah Rd, Mangrove Mountain in 1967. From starting a local earth-moving business, he worked on many farms in the district, and grew lifelong friendships with many on the Mountain. Eddie was also heavily involved in the community. He helped build and was later the President of the Golf Club. He, like many other locals, helped establish the PMK Soccer club, later the Mountains District football club, and life member. Other community groups included Mangrove Mountain Country Fair, Central Mangrove P and C, Sports association, Mangrove Mountain Pre-school and Mangrove Mountain Bush Fire Brigade (later MMRFB, and life member). There aren't many community clubs or groups in Mangrove Mountain that don't have Eddie Grant's name associated with them. Like many other locals, he was a deserving recipient of his OAM in 1993 for service to the community.



**OPEN 7 DAYS**  
**40 YEARS LOCAL**

**VC DENTAL**  
Care For Life

Dental Practice ACCREDITED

General Dentistry | Emergency Care | Cosmetic Dentistry  
Orthodontics & Invisalign | Dental Implants | Oral Surgery  
Sleep Dentistry IV Sedation | Wisdom Teeth Removal  
3D CT Scanning | CEREC same-day ceramic restorations

02 4323 1933 | [www.vcdental.com.au](http://www.vcdental.com.au)  
Suite 10, 36-40 Victoria Street, East Gosford NSW 2250

- NEW PATIENTS**
  - Comprehensive checkup & clean Includes up to 5 x-rays
  - No Gap** (with health insurance) or \$290
- OFFERS (all patients)**
  - Free orthodontic consultation
  - Free dental implant consultation
  - Free cosmetic makeover consultation
  - Sport mouthguards: **No Gap** or \$99
- FINANCE**
  - We **bulk bill** the Medicare CDBS
  - Zip Pay & Zip Money** payment plans
  - We partner with **SuperCare**



# HEARING LOSS ??

## AUDIOLOGIST VISITING MANGROVE MOUNTAIN

→ Micro-Suction, A safe and accurate ear wax removal available.  
Free hearing aids for eligible pensioners and Veterans.

📞 02 43115511

📄 Home visits for customers who can't travel.

SCAN HERE FOR BOOKING



Central Mangrove, Woongarah, Morisset and Wyee | [admin@welfasthearing.com.au](mailto:admin@welfasthearing.com.au) | [welfasthearing.com.au](http://welfasthearing.com.au)

Eddie and Joan have 3 boys, Brad, Mark and Ashley, five grandchildren, Matthew, Kirsty, Patrick, Lauren and Olivia, and three great grandchildren, Franklin, Waylon and Abigail.

We would like to pass on our sincere thank you to everyone who attended Eddie's funeral or watched online. Thank you to all who have sent messages of support over the last few weeks. The outpouring of support has been truly humbling. He leaves a gap too big to fill, but an enduring legacy. Eddie will be sorely missed by us all, but fondly remembered.

*Brad Grant  
on behalf of the Grant Family*



# MANGROVE MOUNTAIN

MEMORIAL CLUB LTD.

## WHAT'S ON WEEKLY

### MONDAY

HAPPY HOUR 4-6pm

### TUESDAY

BINGO from 11am - \$18 Pizza night  
HAPPY HOUR 4-6pm

### WEDNESDAY

\$20 schnitzels

### THURSDAY

POKER 630pm \$24 steak night  
MEMBERS BADGE DRAW 730pm

### FRIDAY

HAPPY HOUR 4-6pm, COCKTAIL HOUR 6-7pm  
MUSICAL BINGO 630pm every fortnight  
MEAT RAFFLE drawn at 730pm  
\$35 Ribs & wings

### SATURDAY

POOL COMP from 630pm. Entry fee \$5

### SUNDAY

Kids eat free



Find Us On Facebook & Instagram - 18 Hallards Road, Central Mangrove, 2250 - 02 4373 1129 - [www.mmmclub.com.au](http://www.mmmclub.com.au)



## Mangrove Mountain Country Fair 2026 Contemporary Art Prize

Our Country Fair will be held on Saturday, 17th October.  
The theme for this year's Contemporary Art Prize is: -

### "Shades of Yesterday"

The phrase "shades of yesterday" refers to something in the present that reminds a person of a person, event, or era from the past. It is a metaphorical expression used to describe a connection, echo, or haunting memory of past times.

This category, that is linked to a set theme, sparks great interest each year, and we are always thrilled with the quality of the entries.

Entries can be any medium and we encourage diversity. Our sculptural entries have been very interesting. I look forward to our first digital or film responses!

We know that there are many local artists producing work of high standard and we encourage all of you to enter this prize to showcase our area!

Entry is free and the winner will receive a cash prize of \$200 in addition to the honour of the award.

Entries from artists over 16 years of age can be delivered to the Mangrove Mountain Hall on:

- Thursday, 15th October between 3pm and 5pm or



## HUNTER EARTHMOVING SERVICES

*"4th Generation of Earthmoving  
on the Mountain"*

**GENERAL EXCAVATIONS & CLEARING  
DAM & CHANNEL CONSTRUCTION, REPAIR & CLEARING  
PRIVATE ROAD/DRIVEWAY CONSTRUCTION & REPAIR**

- 20 TONNE EXCAVATORS
- 25 & 30 TONNE DUMP TRUCKS
- LONGREACH EXCAVATOR (16m)
- SKIDSTEER & ROLLERS
- 30 TONNE LOW LOADER, TRUCK & DOGS

#### ATTACHMENTS:

**RANGE OF BUCKETS & AUGERS  
GRAB - HAMMERS - RIPPER  
PULVERISER - MULCHING HEAD  
POWERRAKE - SLASHER**

**Wayne Hunter - 0431 761 338  
E [hunterearthmoving@bigpond.com](mailto:hunterearthmoving@bigpond.com)**

# studio gabrielle.

FOR THE LOVE OF HAIR

MEN, WOMEN AND KIDS

HAIRCUTS

COLOUR

STYLING

P | 0419 193 083

I | STUDIO GABRIELLE

L | PEATS RIDGE RD, PEATS RIDGE

SCAN QR CODE  
FOR ONLINE  
BOOKINGS



- Friday, 16th October between 8am and no later than 11am

Please include a brief description of your work explaining its link to the theme

Please contact me for further information

Poppe 0400105653



✓ DA & Council approvals

✓ Shed design

✓ Earthworks & Concreting

✓ Shed Kit supply

✓ Shed construction

✓ Roofing



Phone: 02 4312 7613

[info@completesheddevelopments.com.au](mailto:info@completesheddevelopments.com.au)

[www.completesheddevelopments.com.au](http://www.completesheddevelopments.com.au)

**KIDD**  
Property Sales.

# Selling your property?

Read what sellers have to say—discover their firsthand experiences and insights to help guide your own property sale journey.

## First class job!

Michael helped us through the difficult process of preparing for sale and selling our property that had been huge a part of my life for over 50 years.

Prior to listing the property for sale we had appraisals from a number of agents but Michael was the only one who truly understood the property's features and history and how it fitted in to the character of the mountain area.

I'm sure it wasn't the easiest property to sell with specialised but ageing infrastructure that could either be a liability or invaluable to the right people.

When we were discouraged Michael kept us moving ahead, doing what we could to facilitate a sale. In the end we got a fair price, both for us and for the new owners who I trust will build their own memories for themselves and their children just as we have.

Michael wasn't in it for an instant sale but for the right sale. Jonathan Houston -  
vintage Motor Garage, January 2026 Central Mangrove.

**Throughout the whole campaign Michael guided us and communicated in a way that made us feel confident and comfortable with the sale process. I highly recommend Michael to anyone that is considering selling their property. Michael achieved a great result and worked extremely hard on our behalf.**

**Posted by P & S Fuch (seller) 21 02 2026**

Contact Michael now on 4376 1440 to learn how he can assist you in achieving optimal results when selling your property and securing a competitive price without incurring significant marketing expenses.



P **4376 1440** - M **0439 761 440**  
W **www.michaelkidd.com.au**

 [realestate.com.au](https://www.realestate.com.au)

  
Domain

**32 years - 1994 to 2026**

Real Estate agent since 1992, Experienced in marketing since 1981.

Michael Kidd Property Sales Pty. Ltd. T/as Kidd Property Sales Corp. License No.1062876 ABN 91 091 596 600 Michael C Kidd Class 1 Licensed Real Estate, Stock & Station Agent, Licensee In Charge.

# Local Cattle Breeder Wins at Royal Canberra Agricultural Show

We at Mountain Medicine would like to congratulate Dr Christine Wade and her team at Silver Gully Square Meaters, on their win at the Royal Canberra Agricultural Show this month.

Milly and Christine, with great help from Lewis, and Erin Wilcox won Grand Champion Cow with Silver Gully Umbria and her calf Walter. Erin came over from Margaret River in Western Australia to help with the Harvest Festival in June, and selected the team for the show back then. She then came back in October and chose Umbria as the cow to take to show. Milly spent weeks training with Umbria to improve her skill at the lead, and it was Milly who walked with Umbria and Walter in the ring.

This is the 30th anniversary year



## Make the most of your land.

**Local Land Services** can support you with improving productivity, controlling pests, boosting biodiversity and much more.

Explore our events and services near you.



1300 795 299  
[nsw.gov.au/lls](https://nsw.gov.au/lls)



# MEG WASHINGTON @ MANGROVE MOUNTAIN HALL

Multi Aria Award winning indie pop icon, is coming to perform at our historic Mangrove Mountain Hall on Friday night the 27th of March! With special guest Jo Davie. Don't miss out! To book visit [www.meganwashington.com](http://www.meganwashington.com)

Meg Washington is a platinum-selling, award-winning, and genre-

defying singer-songwriter who fluently weaves the worlds of jazz, pop, folk and musical theatre together.

At the heart of Meg's latest album "GEM", is this tour's namesake "Natural Beauty" - a concept that stemmed from challenging the role of an artist in society, and bringing her own world of truth and beauty to the



*Meg Washington Live - Photographer Michelle Pitiris*



of Square Meaters Australia, and the Royal Canberra Show was attended by Square Meater growers from all over Australia, coming from as far as Western Australia and South Australia. To have a win in this class of competitor is a huge achievement.

Umbria won for being judged as having the 'most outstanding' confirmation with 4 good feet and

perfect udder, and her calf Walter also had great from and a good square line standing. Correspondingly, Umbria was the youngest cow in her class.

Dr Wade has been breeding Square Meater Cattle since 2000 and has much success with this breed.

Well done Christine, Milly and team.

*Mountain Medicine Team*

surface.

On her Natural Beauty Tour, Meg brings her unforgettable show to an extensive list of some of Australia's most beautiful and remote locations.

Solo, Meg's shows are an intimate, captivating spell. Alone at the piano, the soaring melodies and lyrical poetry of her songwriting are laid bare, as Meg makes her way through a selection of songs from her impressive five-album catalog. Each night is truly unique, with a setlist often chosen according to the special, connected moment that is shared between artist and audience.

A rare opportunity to hear Meg's electrifying voice up close and to experience one of Australia's best musicians in a never-to-be repeated live performance.

All ages event. Great food available to purchase on the night, BYO drinks and snacks welcome. Doors open at 7pm.

To book visit [www.meganwashington.com](http://www.meganwashington.com)

*Ryan Howard*

## A FAVOURITE PLACE MARKS SIX MONTHS

In September last year, we opened the doors of the new Gosford Regional Library. Now six months later, we can't imagine life without this favourite place in our community.

Since opening, around 70,000 items have been loaned and 2,110 new members have signed up. Almost 5,000 people have attended an event and we've enjoyed author talks from Costa Georgiadis, Judy Nunn and Peter FitzSimons.

On Tuesday 24 March, we'll be holding our Council meeting in the auditorium - another first for the new library. You're welcome to attend as part of the public gallery.

Our library's location in the heart of Gosford City forms part of an education and innovation cluster with TAFE, the University of Newcastle's Central Coast campus and the Clinical School at Gosford Hospital.

This aligns with the NSW Government's vision in the Central Coast Regional Plan 2041 to create and support the growth of an education and employment precinct in Gosford.

I'm proud of what we're achieving and I look forward to celebrating Gosford Regional Library's first birthday later this year.

*Mayor Lawrie McKinna*

# ROTARIAN NAMED GOSFORD WOMAN OF THE YEAR

Lifelong community advocate Jayne Mote has been named the 2026 Gosford Local Woman of the Year.

The Local Woman of the Year Awards recognise and celebrate progressive thinkers, everyday heroes, social advocates and community role models.

Ms Mote, of Umina Beach, is cofounder of Rotary Brisbane Water among a long list of contributions to the local community spanning five decades as an exemplary volunteer and leader.

Her nomination states her service represented “an extraordinary legacy of compassion, leadership, and community building”.

Her work spans local food relief, international cultural exchange, youth development, environmental protection, cultural enrichment, and health advocacy.

Member for Gosford, Liesl Tesch MP said “We are so lucky to have people such as Jayne working for good in our community and beyond,” Ms Tesch said.

In her nomination, director of Rotary Brisbane Water Mitchell Gordon wrote: “She has not merely responded to community needs but has actively identified gaps and created new organisations and initiatives to address them.”

“My involvement with my community started years ago whilst still living in England,” Ms Mote said. “I started two youth clubs in small villages where there was nothing for young people to do.”

“In July 2019, my husband and I started a new Rotary Club on the Central Coast – Rotary Brisbane Water – our motto being ‘Come when you

# Fairview Heritage Tours

Fairview is a heritage-listed traditional homestead at Dubbo Gully. It is well known for its magnificent setting and the central role it played in the life of the Mangrove Creek community and the Central Coast for over 100 years.



The Fairview Homestead Association is organising car excursions to Fairview in 2026, starting on Easter Sunday (Apr 5). We will be stopping at historically significant sites along the way, including the site of “Williams Farm”, James Everingham’s “Red House Farm” and St. Thomas’ Cemetery. Fairview and Dubbo Gully are rich in history and heritage. Join us for a fabulous day to share tales of settlement, survival, secrets and skulduggery.

We plan to run 4WD car excursions to Fairview Homestead from Mangrove

can, do what you can’.”

An Honour Roll of local women nominated by their MPs will be acknowledged during NSW Women’s Week (2-8 March); an annual week-long celebration of women in NSW through a program of activities that empower women and promote gender equality.

*Media Release from the Office of  
Liesl Tesch MP  
Member for Gosford*

Mountain on:

- Sunday Apr 5th (Easter Sunday)
- Sunday May 17th
- Sunday June 7th

Our objective is to save Fairview from ‘demolition by neglect’ and to work with Council to find a meaningful purpose for Fairview. We want to see the Homestead protected and restored, to showcase the historical and cultural significance of the Mangrove Creek community and to preserve that

heritage for future generations.

Please sign the petition (scan the QR Code) and support the ‘Friends of Fairview’



Numbers on each trip are strictly limited. For details and to book a place, please email Donna at [secretary@fairviewhomestead.com.au](mailto:secretary@fairviewhomestead.com.au) — come and join us.

*Dr. Matt Lohmeyer, President  
Fairview Homestead Association Inc.  
[president@fairviewhomestead.com.au](mailto:president@fairviewhomestead.com.au)  
0431 664 550*

**OUTLAND Mechanical & Maintenance Service**  
Licence No. MVRL54125 ABN 14814837840



**Mobile Diesel Mechanic**

- Specialising in Small Fleet Diesel Service
- Tractors • Farm Machinery • Mowers
- Earthmoving Machinery
- Welding

**John: 0427 660 752 [jlhellyer67@gmail.com](mailto:jlhellyer67@gmail.com)**



**JEREMY AOUN**  
PLUMBER | GAS FITTER | ROOFER

OVER 30 YEARS EXPERIENCE  
ALL YOUR RURAL PLUMBING NEEDS

**Mobile: 0424 894 225**  
Licence:134701C  
[Email@aussieplumbing1@gmail.com](mailto:Email@aussieplumbing1@gmail.com)

# STEM ADVENTURES: EXPLORING, CODING, AND CREATING OUR FUTURE!



## Learning at Central Mangrove PS

Our STEM room is buzzing with excitement and innovation! As highlighted by the NSW Department of Education, "STEM education is vital for Australia's future, equipping students with essential skills in science, technology, engineering, and mathematics." This term, we've dived into exciting hands-on learning.

### Farm to Fork Faire

As part of our "Farm to Fork Faire" project, students will visit local farms to learn firsthand about the journey of food from farm to table. They will then design and run a café, serving fresh produce grown in our own gardens to parents and community members, putting their learning into delicious practice.



### Blue Bots

These programmable robots teach students coding, computational thinking, and problem-solving skills. Working in pairs, students have been coding Bluebots to navigate paths marked out with masking tape on the floor, turning learning into a fun and interactive challenge.

### DASH Bots

DASH robots are friendly, programmable robots designed to teach coding through play. With simple block-based coding apps, students have been learning to make DASH move, sing, light up, and interact with its environment, making learning programming concepts engaging.



## REGULAR ACTIVITIES & MEETINGS

### RURAL FIRE SERVICES

Bucketty RFS	Weekend Training General Meeting Contact	3rd Sat, 9am-12 pm 4 meetings per year bucketty@lowerhunterffcs.com.au 4998 8130
Calga-Mt. White RFS	General meeting Training Information & updates Contact	3rd Mon of the month, 7.30pm all welcome Every Monday 6.30 except public holidays Facebook.com/calga/mtwhiteruralfirebrigade/ Captain.calgamwhite@ccrfs.org.au - Zack Winslade.
Kulnura VBFB at Greta Rd Station	General meeting Training	1st Wednesday of the month, 7.30pm 3rd Wednesday of the month 7.00pm
Mangrove Mountain RFS Bloodtree Rd	General Meeting Training / Maintenance	Last Wednesday of the month, 7 pm, All Wednesday's except last of month, 7 pm
Spencer RFS	General Meeting Training Maintenance	2nd Monday of the month Meeting 6.30pm 3rd Monday 6:30pm 4th Monday 6:30pm E: captain-Spencer-vol@rfs.nsw.gov.au 0415 668953. 4778 Wisemans Ferry Rd
Somersby RFS	General Meeting Training/Maintenance	First Wed of the month 7.30pm at the Station Every Wed night 7.30 at the Station (except before Wed general meeting)
Yarralong RFS		Information: <a href="http://www.facebook.com/YarralongRuralFireBrigade/">www.facebook.com/ YarralongRuralFireBrigade/</a> Phone contact: 0494 344 030 Email: volunteer@yarralongrfs.org.au

### COMMUNITY & SOCIAL

Central Coast Plateau Chamber of Commerce	First Tuesday each month 7.00PM MMMC
Coastlink Friendship Group	Wed 9.30am-2pm at the Health Centre, Nurses Rd, Central Mangrove
Country Women's Association (Somersby)	Second Wed of each month, at Somersby Hall Wiseman's Ferry Road, Somersby, contact Sue, 43721280 or 0407768000.
Country Women's Association (Peats Ridge & District)	Third Monday of the month at the Kulnura Hall. Any enquiries please contact Christine 0419 400 163.
Country Women's Association (Mangrove Mountain Evening Branch)	2nd & 4th Tues of the month, 4-8pm at Mangrove Mtn Union Church, 2154 Wisemans Ferry Rd, MMtn. General meeting 6pm 2nd Tues. Ph Judy 0458 655850
Gosford North Inner Wheel club	2nd Wed each month 11am at Phillip House in Kariong. Contact: Glenis Ph: 0400 486 760
Kulnura & District Garden Club	Second Monday, 9.30 for 10am start. Jacqui Maxwell 0455364262 kulnuradge@gmail.com
Kulnura Tuesday Tennis	Tue 9.30am-12.30pm, Kulnura Tennis Courts. Enquiries: Alison Palmer 0427731548.
Ladies of the Valley Afternoon Tea	1st Tues, 1pm to 2.30 at Angels Sussurri Cafe Yarralong. Margaret Dale 0411104770
Mangrove Mountain & Districts Community Group	1st Thurs of the Month, excl Jan. 7.30pm, Mangrove Mtn Hall.  Contact: mepccinc@gmail.com, 0412669649
Mangrove Emergency Planning & Communications Committee	
Mangrove Mountain Country Fair Committee Meeting	3rd Thu of mth except Jan, 7pm, at Union Church Hall. Pres - Steve 0455 155 075 <a href="http://www.mountaindistrictsassociation.com.au">www.mountaindistrictsassociation.com.au</a> <a href="mailto:secretary@mountaindistrictsassociation.com.au">secretary@mountaindistrictsassociation.com.au</a>
Mountain Districts Association (MDA)	Second Tuesday of the Month 6.30pm at the Mangrove Memorial Club
Mountain District Football Club Meeting	2nd Thu. Ph Elaine Burrows 0412988353
Probus - West Gosford	President Marlee Maxwell Email rivercaresinc@gmail.com
River Cares for the Lower Hawkesbury River District	Friday 7.15am at Phillip House. 43404529
Rotary Club Meeting	
Spencer Community Progress Group Inc	President Brad Maisey, Community Meetings, 0436482201, spencercpg2@gmail.com Articles to: spencercpg2@gmail.com
Newsletter	
Spencer Sheilas Community Social Club	Last Friday of the month. Eve Leeming - 4377 1116 and/or cedriceve@bigpond.com
Wisemans Ferry Community Men's Shed	Tues & Sat, 9am-5pm. Contact: Alan Hunt 4566 4626 or Adrian Acheson 0448 833 781

### SPIRITUAL

Anglican Service - Mountain Districts	Every Sun 8am at Peats Ridge Scout Hall, Sunday School during school terms
Mangrove Mountain Union Church Trust	Committee Meeting 3rd Monday, 7.30pm at the Mangrove Mountain Union Church Hall
Mountain Districts Christian Church	Services 9.30am 2nd & 4th Sundays. Bible Study 4.30pm 1st & 3rd Mondays. Mangrove Mountain Union Church
St Barnabas Christian Service Yarralong	Every Sunday, 9.30am. (Easter & (Christmas Carols dates to be advised)

(cont'd next page)

## LIVESTOCK MARKET REPORT



### Maitland Liveweight Cattle Sale 9th March 2026

600 cattle yarded this week at Maitland. 540 Trade/60 export.

- Restocker Heifers up to 250kg made 357 c/kg to 438 c/kg
- 250kg-300kg made 420 c/kg to 465 c/kg
- 300kg to 380kg made 409 c/kg to 455 c/kg
- Restocker steers up to 250kg made 392 c/kg to 555 c/kg
- 250kg-300kg made 466 c/kg to 530c/kg
- 300kg-380kg made 454 c/kg to 520 c/kg
- Yearling Steers to Feed made 421 c/kg to 465 c/kg
- Yearling Heifers to Feed made 383 c/kg to 392 c/kg
- Cows made 359 c/kg to 408 c/kg
- Bulls 360 c/kg to 360 c/kg

### Maitland Liveweight Cattle Sale 2nd March 2026

530 cattle yarded this week at Maitland. 470 Trade/60 export.

- Restocker Heifers up to 250kg made 270 c/kg to 430 c/kg

.:KSR.:

**NEW  
GRAVEL  
ROADBASE  
\$55/T  
DELIVERED**

**0411 868 437**

- 250kg-300kg made 363 c/kg to 450 c/kg
- 300kg to 380kg made 350 c/kg to 440c/kg
- Restocker steers up to 250kg made 408c/kg to 515 c/kg
- 250kg-300kg made 426 c/kg to 520c/kg
- 300kg-380kg made 430c/kg to 472 c/kg
- Yearling Steers to Feed made 431c/kg to 490c/kg
- Yearling Heifers to Feed made 355 c/kg to 355 c/kg
- Cows made 296 c/kg to 380 c/kg
- Bulls 270 c/kg to 270 c/kg

### Upcoming Sales

**Mackas Pastoral Commercial Female Angus Sale.** March 19, 2026, 11am - Gloucester Saleyards. 500+ quality females  
Also interfaced with AuctionsPlus.

**Maitland Annual Feature Weaner Sale.** April 2, 2026, 11am - Maitland Saleyards

1200 Top of the drop weaners.  
Featuring lines of locally bred steers & heifers from reputable herds across the Hunter & Manning Valley  
– Grassfed & antibiotic free  
– Pre-weighed & scanned – sold \$ per head  
– Live auction interfaced with AuctionsPlus  
– Curfew of 6pm Wednesday 1st April to allow assessment of all lots

A friendly reminder that we are often in the area seeing clients and looking at their livestock and if you would like us to call in be sure to give us a call.

Like and share our Facebook page!  
Keep up to date with [bowelidbury.com.au](http://bowelidbury.com.au)

*Michael Easy & Rodney McDonald  
Bowe & Lidbury  
52 Kyle Street, Rutherford  
NSW 2320  
P: 02 4932 7066*

## REGULAR ACTIVITIES & MEETINGS (cont'd)

Catholic Service - Central Mangrove	Saturdays 5pm St. Dionysios Greek Orthodox Church, 21 Nurses Rd, Central Mangrove, Contact Nai Hereford 0405 558 669
- Spencer	Holy Trinity Church, 1st Sat 4pm, Phone 0412 201 851 as times may change.
- Wollombi	2nd & 5th Sunday of the month, 4.30pm Mass at St Michael the Archangel, Wollombi.
- Yarramalong	1st Sunday each month, 11.00am St. Barnabas All welcome. Enq 0428 438577
Divine Retreat Centre	Daily Holy Mass 8.00am to 8.30 am Last Sun, 9am-4pm, One Day Retreat. 160 Hensons Road, Somersby Ph 0243721598
Serbian Orthodox	2nd & 4th Sun. of the month. 10 am, followed by luncheon, tea, coffee, cakes (cost \$20). 1184 Peats Ridge Rd, Peats Ridge
Kariong Community Baptist Church	Sun @9.30am, Church & Kid's Program, Philip House, Mt Penang Gardens, Chris Clarke email <a href="mailto:pastorkcbbc@outlook.com">pastorkcbbc@outlook.com</a> 10am every Saturday, Mangrove Mountain Union Church.
Restitution Ministries Independent SDA Church	
<b>YOUTH</b>	
Junior Girl Guides 5-10	Kooree Guide Cabin, 5.00pm – 6.30pm Mondays in school term,
Girl Guides 10-15	Kooree Guide Cabin, 6.00pm-7.30pm Mondays in school term, Contact 0417451764 for further information
Scouts, Cubs & Venturers Peats Ridge Scout Hall	Cubs meet 6.30pm – 8.30pm Wednesdays Scouts meet 7.00pm – 9.00pm Tuesdays Venturers meet 7.00pm – 9.00pm Mondays Contact 0460 696 941
<b>HISTORICAL</b>	
Brisbane Waters Historical Society	25-27 Henry Kendall St., West Gosford, Ph: 4325 2270. <a href="http://www.henrykendallcottage.org.au">www.henrykendallcottage.org.au</a>
Dharug & Lower Hawkesbury Historical Society Inc.	Last Sat of month. All welcome, contact Jan Kofron 0405321478 <a href="mailto:jankofron@optusnet.com.au">jankofron@optusnet.com.au</a>
First Fleeters Central Coast Chapter	2nd Sat of the month, 10.00am for 10.30, Point Clare Hall (except Jan & Dec). Contact Margaret 0409467710 or Gavin 0406645842.
The Pearl Beach Aboriginal History Group	3rd Fri of month 7.30pm Pearl Beach. Peggy 0411754577 <a href="mailto:pbaboriginalhistory@gmail.com">pbaboriginalhistory@gmail.com</a>
Wyong District Museum & Historical Society	Sun to Thurs, 10am-2pm, other times by appt. 43521886 or <a href="mailto:info@alisonhomestead.com.au">info@alisonhomestead.com.au</a> . website: <a href="http://www.alisonhomestead.com.au">www.alisonhomestead.com.au</a>
<b>ACTIVITY/HOBBY</b>	
Carnival Glass Club	Meetings held every three months. Central Coast, Newcastle, Sydney. Ring 0447723956 or 0448390077 for details.
Central Coast Junior Motorcycle Club Inc.	Meeting dates: <a href="http://ccjuniormotorcycleclub.org.au">ccjuniormotorcycleclub.org.au</a> , FB: "Central Coast Junior Motorcycle Club Official". David Smith 0412 506 503
Coastal Communicators Toastmasters	1st & 3rd Thurs of month, 6:45pm to 8:45pm at Doyalson-Wyee RSL. Debbie 0421216952
Saturday Craft Group/Spining and bobbin lace	2nd Sat of the month Somersby Hall (10am to 2pm) cost \$5 per person Carmen 0434071305
Yarn group (knit, crochet etc)	Third Sun 2pm, Angels Sussurri Yarramalong. Contact Kerry Watson 0404059167
<b>HALL BOOKINGS</b>	
Kulnura Hall	Contact Central Coast Council.
Mangrove Mountain Hall	Hall bookings Ryan Howard 0405416289
Mangrove Mountain Union Church & Hall	Church & Hall bookings 0412669649 <a href="mailto:mmucsecretary@outlook.com">mmucsecretary@outlook.com</a>
Somersby Hall and Mountain Districts Culture and Heritage Centre	Hall bookings: 0413 359 655 or AH 4373 1488
Yarramalong school of Arts / Hall	<a href="mailto:enquiries@yarramalonghall.org.au">enquiries@yarramalonghall.org.au</a> <a href="https://yarramalonghall.org.au">https://yarramalonghall.org.au</a>

## Antennas - Digital

Hayward Video & Antenna Service

**VAST Satellite Service**  
*"Government approved installer"*

**Ray Hayward**  
**mob: 0412 685 555**

email: [Ray.Hayward@gmail.com](mailto:Ray.Hayward@gmail.com)





- Excavator with Buckets, Hammer, Auger & grabs.
- Posi track with 4in1 bucket, forks & spreader bar
- Tipper 6 ton
- Posi track slashing

**Excavation - Concrete - Landscape**

Facebook, Instagram  
Email: [blissearthworx@gmail.com](mailto:blissearthworx@gmail.com)

▲ Based in Somersby ▲

**0409 456 003**

# Save These Dates For School Holiday Fun

We will be holding a number of workshops during the second week of the April school holidays.



## Waterbug workshops:

Join Central Coast Platypus Watch and the Waterwatch team to catch, identify and discover the amazing waterbugs that live in our waterways. Learn about the fascinating world of waterbugs- a favourite food for the platypus. A morning (10am -12pm) and afternoon session (1pm - 3pm) will be held across three locations on the Central Coast. Participants will receive a free waterbug kit to take home. Bookings open Tuesday 10th March. Bookings essential [cen.org.au/events](http://cen.org.au/events)

Workshop dates:  
Monday 13th April  
10am- 12pm OR 1pm -3pm  
Woodbury Inn Park, Mardi

Wednesday 15th April  
10am- 12pm OR 1pm -3pm  
Worthing Creek Reserve, Erina

Thursday 16th April  
10am- 12pm OR 1pm -3pm  
Fagans Road, behind Lisarow Public School, Lisarow

## Kids in the Nursery:

Join CEN's Landcare Officer and Wildplant Nursery Team for a hands-on morning at the CEN's Wildplant Native Nursery in Ourimbah this school holidays. Kids can have a fun morning sowing native seeds, potting up seedlings, and planting out the stock planter beds.

Each participant can take away a few plants to grow at home and keep up with what they've learned at the nursery.

Tuesday 14th April  
9:30am -11:30am  
CEN's Wildplant Nursery, University of Newcastle, Ourimbah Campus

Community Environment Network  
FM Building  
Central Coast Campus  
University of Newcastle

## POSITIONS AVAILABLE

CAR WASHER / DETAILER wanted to clean limousines and buses as needed in Somersby. Suit retiree or someone in between work. Contact Greg P: 0414 682 306 or E: [lionlimos1@gmail.com](mailto:lionlimos1@gmail.com)

## WANTED TO RENT

RENTAL - (Long-Term) Wanted by PENSIONER. Budget to \$520 pw  
• Clean & Very Quiet.  
• Single (no Partner, no Kids, no Pets).  
• Non-smoker/No alcohol/No drugs.  
• RENTAL REFERENCE history - EXCELLENT.  
2BR + Garage wanted (Study would be good)  
Please Paul - Ph: 0461469999

## FOR RENT / LEASE

LARGE FLAT newly renovated, 2 bedroom, 2 car spaces, large living area, large kitchen, water & electricity included. On a private farm, no pets. \$500pw. Ph 0438 761260 or 0447 767117

## AGISTMENT

HORSE AGISTMENT AVAILABLE. Full care. Group and individual paddocks with shelters. Full size sand dressage arena, grass jumping arena. Located walking distance to Peats Ridge Village and Café. Call Bronte 0428603849

## HEALTH & FITNESS

PILATES MAT CLASS - Wed 6pm and Thur 11am, Union Church Hall, Mangrove Mountain. All levels welcome. Private reformer also offered. Call Melanie 0405 453 374

## FREE

YELLOW IRISES free, dig up your own, Somersby. Ph 0405 563 331



## Mountain Medicine

Providing the local community with a collaborative approach to multidisciplinary healthcare.

### Dr Christine Wade

B.Med (Hons) FRACGP

### Dr Sepali de Silva

MBBS

### Dr Rohan Dissanayake

MBBS

### Dr Anisa Rouhipour

MBBS

### Torin O' Grady

Podiatry (Foot Care)

### Pathology - Douglass Hanly Moir

Mon & Fri 8.30am to 1.30pm

Wednesday 12.00pm to 5:00pm

Ph: 437 41942



Now Bulk Billing.  
Accepting new patients.

40 Niclins Rd, Mangrove Mountain NSW 2250  
ph 4374 1252

## PRINTING SERVICES

Lynwood Press  
Your local printing service



• Flyers • Business Cards  
• Booklets • Graphic Design  
• Stationery • Duplicate Books

*Publishers of the "Community News"*

Ph/Fax: 4374 1039 Mob: 0412 669 649

Email: [enquiries@cnews1.com.au](mailto:enquiries@cnews1.com.au)



PTY LTD  
**DIVERSE**  
TRADING AUSTRALIA

Resource Recovery | Plant Hire | Site Remediation

Roads | Shed Pads & Sites | Dams | Council Approved Clean Fill

**CALL 0408 843 677**

[admin@diversetradingaustralia.com.au](mailto:admin@diversetradingaustralia.com.au)

## CLASSIFIED ADVERTISEMENTS

These columns will be set aside each issue for residents to advertise inexpensively and effectively in their own local paper. If you have anything you wish to sell, buy, swap, etc., ring 4374 1039 or 0412 669 649 during office hours. Rates start at \$4.00.

### WANTED

OLD BATTERIES, will pickup, phone 0413 975 107

SUBARU FORESTER 2006 for parts only, not smashed. mechanical condition not important. Ph 0427066384

### FOR SALE

WATER LICENCE Kulnura Mangrove Mountain Ground water source 30 Megs, open to offers, call 0407761375

GALE'S CITRUS - Bagged Citrus trees in various sizes available ph. 4372 1408 or mobile 0421 196 631

HAY FOR SALE Lucerne, Oaten, Wheaten, Rye, Rhodes. Big & Small bales, for Horses & Cattle. Call Mitch 0411562782

### SERVICES AVAILABLE

KELLY'S KLEANING SERVICE. Cleaning the mountain & the coast. Please call Kelly on 0420541196

METAL PATIOS, INSULATED ROOFS & Carport Builder. Custom made awnings, Decks, Carports & Sunrooms 0420906499

SLIDING DOOR REPAIR  
We fix glass sliding doors; Screen doors, windows, bi-folds; Remesh doors and screens  
Offer carpentry services. Fully insured. Please call Heath for a free quote. 0494197908

### SERVICES AVAILABLE

BRICKLAYING & Render repairs. Adrian 0408347737. Lic 98665C

AIRCONDITIONING, BUILDING, CARPENTRY - Local service, 14yrs experience in aircon, 22yrs experience in building & carpentry. Call Ken 0412 842 920

HORSE RUG REPAIRS - reliable prompt service. Pick-up & drop-off available for large quantities. Ph 0405 620 394

RURAL FENCING - Post & rail, wire stock, chainwire, colourbond, paling etc. Also Landclearing. Phone Rick 4373 1117 or text 0428605419

WALL & FLOOR tiling, ceramic, travertine, limestone, granite. Free quotes. Licenced. Phone John 0411 851 417

GUTTER CLEANING & DOMESTIC HOUSE PAINTING, call Alan on 0427606303. Call for a free quote

LEVEL 2 QHHT Practitioner, Soul Speak Practitioner and Holistic Household Cleansing Consultant. For further info call Sharyn on 0408 967 507, email to shazzaunitt@protonmail.com or visit www.soul-speak-healing.com

### HORSE BURIALS

Specialising in the on-site burial of your precious horse. Ph Craig 0411 2888 12

EXPERIENCE TRANSFORMATIVE HEALING through energy medicine. Supportive sessions for people & animals to restore balance & explore the root cause of issues. Peta - Spirit Ignition email:spiritignition77@gmail.com

OOST Painting Contractors - Lic 71725C  
Quality & cleanliness assured.  
For a free quote call David 4356 1449 or 0417 234 094. Yarramalong Local

**PEST CONTROL - Servicing the local area. A.T.S. Pest Control Services Phone Tony 4373 1157 Mob: 0427 731 157**

MISTY MOUNTAIN RURAL CONTRACTORS - Earthworks, Irrigation, all services available Ph 43530990 or 0418221495

**TRY SOMETHING NEW!**  
**CERAMIC CLASSES AT FOXEY STUDIO-** Mangrove Mtn. Slow down, connect and be creative - bond through the clay and enjoy the present moment. **BOOK NOW: foxeystudio.com.au** or ask any Questions: foxeystudio@gmail.com

TOWN 'N COUNTRY FLOOR SANDING & POLISHING New & old floor boards, parquetry, verandahs, stairs, walls ceilings, re-coating, staining & painting ect..free quote ph Stuart 0400076261 in services available.

**ALL TERRAIN SLASHING**  
Track mounted slasher/mulcher and excavator mounted flail mower. Sloping land, fire breaks, hazard reduction of low vegetation, (lantana,etc) fence line clearing, broad acre slashing. Free quotes. Bliss Earthworx 0409456003

LAURIE DOUGLASS PLUMBING  
Plumber, Drainer, Gasfitter, Roofer - Ph 4373 1257 Mob 0407 008 488

**ALL COVERS & CANVAS WORK!**  
Boats, Vehicles & Horse floats re-trimmed, cover & horse rug repairs, no job too small! Servicing the mountains & the valleys. Call Alan on 0414 993 669 or Louise on 0410 646 200. located at Yarramalong Road Wyong Creek.

# WATER BORES

Local drilling company based at Ourimbah

Contact: Paul Slade  
Ph/Txt: 0408 471247

email:  
Sladedrill@bigpond.com



## Bikes n Motors

**Motor Vehicle Repairer  
Service & Repairs**

Motorcycles \* Light Vehicles  
Cars \* ATVs \* Buggies \* Quads

*Call & Book Now*

**PH: 0491 622 080**

1154 George Downes Drive,  
Kulnura, NSW, 2250.  
★ Behind Jerrys' Cafe ★  
bnm@bikesnmotors.com.au  
www.bikesnmotors.com.au

**PINK & BLUE  
SLIPS**

Licence No:  
MVRL56584

Contractors Licence No: 367849C

# WATERMAN EXCAVATIONS PH: 0438 617 851

Mulching - Horse Arenas - Certified Fill

Sands - Soils - Mulches - Woodchips  
Gravels - Pebbles - Rotomill

Excavators - Tipplers - Grader - Dozer - Pozi Track - 6x6 Dump Truck

## CROSSROADS AUTOMOTIVES

Terry Kyriacou

Mon - Fri: 7:30am - 5:00pm

Saturday: 7:30am - 12:00pm

SPARE PARTS

LOG BOOK SERVICES

MECHANICAL REPAIRS

Ph: 4373 1774



Cnr of Wisemans Ferry Rd. & George Downes Drive, Central Mangrove

**AUTHORISED INSPECTION STATION (INCL LPG)**

## ON THE SPOT AUTOGLASS 0408 433 790



Vehicle glass repairs & replacement for:

- Cars
- Trucks
- Heavy machines

[www.onthespotautoglass.com.au](http://www.onthespotautoglass.com.au)



- AGRICULTURE
- INDUSTRIAL
- DOMESTIC

Licence No - 269888C

**\*24 HOUR EMERGENCY CALLOUT SERVICE\***

Ph: 4322 3333

Fax: 43223433

Email: [sales@girrigation.com.au](mailto:sales@girrigation.com.au)

Web: [www.girrigation.com.au](http://www.girrigation.com.au)

Unit 2 254 Manns Road, West Gosford NSW 2250



## K&T PROPERTY CONSULTANTS PTY LTD

Real Estate Valuers & Land Economists

### ROBERT MEGGS FAPI CPV

*providing independent property valuation advice, including:-*

- Stamp Duty, CGT, GST & Retrospective Valuations
- Probate & Estate Valuations
- Insurance Valuations
- Valuations for Family Law
- Pre-Sale/Auction Advice
- Land Value & Compulsory Acquisition Valuations

500 Kyola Road  
KULNURA NSW 2250

Telephone (02) 4376 1451

Mobile 0429 44 33 10

Email: [ktpropty@ozemail.com.au](mailto:ktpropty@ozemail.com.au)

## Misty Mountain Rural Property Development Services



- agricultural consultants
- pasture improvement
- fertilizer spreading
- weed spraying
- all tractor work 4/2WD
- soil conditioning
- irrigation install/design
- fencing & stables
- crop planning & planting & all excavations
- concrete slabs Lic. R94321
- property evaluation & planning & management
- fork lift hire

Ex-Dept. Agriculture Officer with 45 years  
experience in the local district.

Greg Koutoulas is the man to call on 0418 221 495



## Stop Water Shop

Authorised Dealer

**ONGA, DAVEY and  
GRUNDFOS PUMPS**



## K. W. & M. E. WEST Pty. Ltd.

1650 Wisemans Ferry Road,

Central Mangrove

Phone 4373 1164 Fax 4373 1049

## PUMP REPAIRS AND SERVICE

### Trading Hours

Mon - Fri

7.30 am - 5 pm

Sat 7.30 am - 12 noon

Closed Public Holidays