

# COMMUNITY NEWS

No. 972 Ph: 4374 1039 Mo: 0412 669 649 Email: enquiries@cnews1.com.au Web: cnews1.com.au 5th September 2025



## ENTER THE FAIR

Visitors to our Country Fair often comment about the great displays in the Hall – beautiful flowers, amazing handicrafts and all the rest! Only there for a few hours – entered Thursday and Friday, judged Friday night, home again Saturday. But for those hours on Saturday, the Hall and its contents are magnificent! And a credit to all the people, adults and children, including our local schools, who enter and organise.

There are a few changes from previous years. We have allowed 2 entries in some categories, where there is room for more entries. Adults can now enter Macrame and children can make a Cardboard fort or castle.

We have introduced a special Halloween theme, in adults' craft and cooking and children's cooking. I wonder where Mountain imaginations will take that?

The Mangrove Mountain Evening Branch of the CWA is once again providing 8 encouragement cash prizes in various adult craft and cooking categories. I wonder who will make the best Iced Orange Cake this year?

It will be interesting to see if any Best in Class awards are handed out by the judges for exceptional entries. Last year, Sue Watts got one for her Drawing and Neil Genge for his Man Cake. Eric Cottle got one for his Painting, Matilda Luci for her Native Flowers and Jack Sultana for his Article from Recycled Objects.

Please cut out the schedule in this Community News and keep it handy as you think about what you are going to enter this year.

Sue Douglas

**\*\* See the Country Fair Competition Schedule tear-out inside, pages 9/10 \*\***

## Seniors Health & Community Connections Expo

All Welcome

**Friday September 12th**

**10am to 1pm**

**Community Hall,**

**1639 Nurses Rd, Central Mangrove**

### Join us for:

- Reliable information about aged care services available locally
- Trusted support with forms, applications and referrals
- Advice and guidance from senior's services professionals

from Services Australia (My Aged Care, Centrelink etc.), Meals on Wheels, Wesley Mission's Care Finders, Central Coast Community Transport and Central Coast Legal Aid's Elders Services Program.

**Call Fiona on 0477 752 365 for more information**

**Visit us at the Mangrove Mountain Markets on September 7 and ask about the Expo, our Community Transport Pilot and ALICE program.**



"Let him who is without sin among you be the first to throw a stone."  
John 8:7

"For all have sinned and fall short of the glory of God."  
Romans 3:23

## STOP!

Next issue Published  
19th September 2025

**\*\* DEADLINE \*\***

**\*\* 12th September '25 \*\***

Send adverts & copy by  
email, website or post.  
Email, website, FB or  
phone for enquiries

# PROBUS CLUB

At the Monthly General Meeting on Thursday 14th August the Probus Club of Gosford West cut the cake for their 46th Birthday (7th August). Cutting the cake was Ros Turton (left) & Judy Edgington (right) and current President Elaine Burrows. Ros and Judy along with 3 other ladies were the first ladies inducted into the then male only club - 18.5 years



# Toukley Desalination Plant Proposal

Central Coast Council has commenced the next stage of planning for the proposed Toukley Desalination Water Treatment Plant, a key drought response project that would help secure the region's drinking water supply in times of severe and prolonged drought.

The proposed plant would be built next to the existing Toukley Wastewater Treatment Plant but only constructed if needed during a future drought. Council is currently progressing concept design and environmental investigations to ensure the project is "plan ready" should water supplies ever be critically at risk.

Desalination is removing salt from seawater to produce drinking water, and would provide a rainfall-independent water source, strengthening the region's water resilience and supporting a growing population.

Council Director of Water and Sewer, Jamie Loader said planning now gives us time later.

"Running out of water is not an option, if a drought hits and dam levels fall, we won't have time to start from scratch. We need to have approvals in place so we can act quickly to protect the community's water supply."

The project has already evolved in response to community feedback.

"We've listened to the community and made significant improvements since the original desalination proposal."

"This includes moving the ocean intake further offshore to reduce impacts on local beaches. Now, we're asking nearby residents to help us identify what matters most to

ago - February 2007. Our theme for the day was Blue & Yellow - the Probus Colours.

If you would like to join the oldest running Probus Club on the Central Coast - a mixed club please contact Carolin Frohmuller, Secretary on her mobile 0409 305 618.

## Antennas - Digital

Hayward Video & Antenna Service

**VAST Satellite Service**  
"Government approved installer"

**Ray Hayward**

**mob: 0412 685 555**

email: Ray.Hayward@gmail.com



- Local Painter
- New and Repaint
- Industrial, Commercial and Residential

email: [admin@sunlanddeco.com.au](mailto:admin@sunlanddeco.com.au)  
website: [www.sunlanddeco.com.au](http://www.sunlanddeco.com.au)

**Call Frank: 0411 185 717**

## Kulnura Computers Supplies & Services

**4373 1237**

- ❖ Custom Built Computer Systems
- ❖ for the Home - Office - Extreme Gaming
- ❖ Computer Repairs - Virus removal
- ❖ Upgrades
- ❖ Software - Accessories
- ❖ Electronic components



**LOCAL BAS AGENT AND BOOKKEEPER**

Agent number 26234597

**0424 613 844**

[heidi@hmbookkeeping.com.au](mailto:heidi@hmbookkeeping.com.au)



them when choosing the best location for the pumping station,” Mr Loader said.

The desalination plant is a key option in the Central Coast Water Security Plan, which was developed in consultation with the community. The facility would be capable of producing up to 30 million litres of drinking water per day using seawater drawn from the ocean and treated on-site before entering the water supply network.

What’s happening now

Council is currently preparing an Environmental Impact Statement (EIS) and undertaking detailed studies, including marine and geotechnical investigations. As part of this process, two potential locations are being assessed for a below ground pumping station to connect the offshore intake pipe to the desalination plant. These locations, near Jenny Dixon Beach and Pebbly Beach, have been shortlisted based on initial desktop analysis considering cost, constructability, community/social impact, environment, heritage and in particular, reducing the impact to the beaches themselves.

As part of the detailed studies, biodiversity surveys will be undertaken for approximately one week from mid-August. This activity includes some night works from around 6pm to midnight. Residents should be aware that these night works will involve spotlights and playing owl calls over

## Protect Your Ears: Why Farmers and Power Tool Users Should Get Regular Hearing Checks

Many people think hearing loss is something that happens only with age, but in reality, it can develop much earlier – especially for those regularly exposed to loud noise at work. Farmers, tradespeople, and anyone who uses power tools face a higher risk of noise-induced hearing loss, one of the most common – and preventable – workplace injuries.

Tractors, harvesters, chainsaws, grinders, and other machinery can produce sound levels well above safe limits. Over time, repeated exposure to this noise can cause permanent damage to the delicate hair cells in the inner ear. The problem is, hearing loss from noise happens gradually. You may not notice the change until it starts affecting conversations, safety, and quality of life.

That’s why regular hearing checks are essential. Early detection allows for steps to be taken before the damage

becomes severe – such as using better hearing protection, adjusting work habits, or seeking treatment options.

Workplace hearing safety isn’t just about protecting your ears for the job you do today – it’s about safeguarding your hearing for the rest of your life. If you work with loud machinery or power tools, book a hearing test at least once a year. Your future self will thank you.

*Jithin Jacob*

Welfast Hearing Pty Ltd, 43115511

[www.welfasthearing.com.au](http://www.welfasthearing.com.au)

[admin@welfasthearing.com.au](mailto:admin@welfasthearing.com.au)

### Mangrove Mountain Union Church 1914 Trust Inc.

#### Notice of AGM

15th September

Committee Meeting at 7pm  
followed by AGM at 8pm

The community is urged to join  
the Trust and help preserve this  
historical local icon

a speaker to attract nearby birds for survey purposes.

For more information, visit:  
[centralcoast.nsw.gov.au](http://centralcoast.nsw.gov.au) and search  
‘Toukley Desalination Plant’.

Central Coast Council Media Release

### Dr. S. ANANDASIVAM

(ANAND)

MBBS, FRACGP, AMCC

For Doctor Appointments:  
Monday - Friday 9am- 5pm

*Laverty Pathology Service  
Available:*

*Monday to Friday 8:00 till 3:30  
Saturday 8:30 till 12*

**Medicare Bulk Billing**

**1639 Nurses Road  
Central Mangrove, 2250  
02 4373 1914**



### Local Solar Power Experts

Living Off Grid  
Has Never Been Easier

Brooklyn Trade Services are your  
local solar electricians, for both  
on and off-grid systems.

Our technicians are certified to  
install state-of-the-art solar and  
battery systems which are great  
for the environment as well as  
your home and or business.

Call us for a chat:

**1300 319 419**

[www.btselectric.com.au/bts-energy](http://www.btselectric.com.au/bts-energy)





**SAVE THIS DATE! 6TH  
SEPTEMBER 2025.**

Our River Cares Trash To Treasure fundraiser event is on again for the third time (after the great success we had last November and earlier this year), in the stunning gardens of the Spencer Thai – 4670 Wisemans Ferry Road from 9.00am to 2.00pm.

River Cares is excited to welcome the Spencer RFS to help support the 'Get Bushfire Ready' campaign and receive your free resources, guides and bushfire survival plans. This is going to be a great day full of treasure hunting, community spirit, and vital bushfire season preparation.

There will be a wide variety of items available for purchase from unique treasures to hidden gems. The Spencer Thai will be selling their delicious egg and bacon rolls and other tasty dishes.

Our special guest Verdi-Crystal will



be coming back to enthrall us with her intuitive readings.

Remember to bring **CASH ONLY** on the day.

Those wishing to participate, simply bundle up your unwanted goods, crafts, hobbies or whatever. To register a stall/table please contact Kylie Phielix on 0478 893 418.

Don't miss out on the opportunity to buy something you didn't know you wanted!

Let's come together for a fun-filled community spring event at our combined Trash To Treasure fundraiser and 'Get Bushfire Ready' day.



**Robyn Downham**  
Publicity Officer

## How To Get A Good Night's Sleep

Sleep is crucial for good health and longevity. Over the last decade or so there has been a lot of progress on our knowledge of sleep - why we sleep, what constitutes good sleep, and what

**EBH**  
BUILDING GROUP  
PTY LTD

**OUR SERVICES INCLUDE:**

- Custom built homes • Granny flats
- Extensions • Carpentry services
- Renovations • Decks & Pergolas
- Waterproofing & Bathroom renovations
- Disabled modifications
- Asbestos removal
- Building maintenance

**Dane Meredith | Builder**  
0420906499  
dane@ebhbuilding.com.au

**Mountain Medicine**

Providing the local community with a collaborative approach to multidisciplinary healthcare.

**Dr Christine Wade**  
B.Med (Hons) FRACGP

**Dr Sepali de Silva**  
MBBS

**Dr Rohan Dissanayake**  
MBBS

**Dr Anisa Rouhipour**  
MBBS

**Torin O' Grady**  
Podiatry (Foot Care)

**Pathology – Douglass Hanly Moir**  
Mon & Fri 8.30am to 1.30pm  
Wednesday 12.00pm to 5:00pm  
Ph: 437 41942

Find us on:  
**facebook**

**BULK BILLING: Children under 16, Health Care Card Holders and Pensioners**

40 Niclins Rd, Mangrove Mountain NSW 2250  
**ph 4374 1252**

*Peats Ridge*  
**AUTO ELECTRICS**

Stephen Andrews Lic. No.: MVRL22840

- Electrical Repairs
- Starter Motors & Alternators
- Lighting
- Electric Brake Controls
- Dual Batteries

- Cars
- 4WD
- SUV
- Agricultural Machinery
- Caravans
- Horse Floats

Plus an extensive range of parts and accessories in stock

We stock quality  
**Century Batteries**  
made in Australia for  
local conditions

*All your battery needs at very competitive prices*

**Ph: 4373 1137**

1160 Peats Ridge Rd, Peats Ridge 2250



the detrimental effects of poor sleep are. It is still unclear as to the exact reason we sleep, but it is now known that long-term sleep deprivation puts us at an increased risk of chronic illness such as heart disease, diabetes, depression, and obesity.

The science of sleep suggests that 7-8.5 hours of sleep per night is optimal. Your sleep is broken up into 5 stages, with stages 1 to 4 going from stage 1 of light sleep, to stage 4 which is deep sleep, and then stage 5, which is our REM or dream sleep. We may cycle through these 5 stages up to five times through the night, with each cycle lasting around 90 minutes.

The REM portion of our sleep is critical for memory, recall, and general daytime performance. Healthy REM sleep has the ability to boost our mood, and improve our memory and concentration.

The majority of modern sleep problems have a basis in lifestyle choices. Inactivity, poor nutrition, and stress all have an impact on sleep. Unfortunately sleep problems are widespread in our modern world. Nearly a quarter of young adults get less than 7 hours of sleep per night. This sleep deprivation can accumulate. Sleep loss can be compared to the effects of alcohol. A study in 1997 found that 17 hours of wakefulness had an equivalent effect on performance as 0.05% blood alcohol.

Sleeping less can act as a trigger

to eat more, and effects our hunger hormones and our cortisol (stress hormone) levels. Sleep loss has also been linked to the development of diabetes, and diabetes conversely can disturb our sleep further.

There is good news though - a daytime nap (siesta) of no more than 30 minutes can help restore our sleep debt. In fact heart disease rates are lower in countries where a siesta is a part of daily life.

So what can we do to ensure we have healthy sleep levels?

**ESTABLISH A ROUTINE:** Regular bedtime and wake-up times can prime our brain for sleep.

**SUNLIGHT EXPOSURE:** getting 1/2 hour of sunlight in the early morning and late afternoon sends a signal to our brain (via our eyes) that it is time to wind down.

**AVOID:** caffeine, alcohol, and smoking. All of these substances have been linked to poor sleep.

**EXERCISE:** Regular, outdoor (if possible) exercise daily. Try to avoid exercising just before bed.

**ELECTRONIC DEVICES:** Try to keep any devices out of the bedroom. If you need to be on a device in the evening, try filtering out the blue light spectrum with either glasses or a program like F.lux. Exposure to blue light frequencies sends a signal to our brain to wake up.

**FOOD:** Eating late can cause sleep issues. Stop eating 3 hours before you

go to bed.

Sleep changes can take time. Pick one aspect of sleep hygiene to focus on at a time to make sure you get long-term change that is sustainable.

If you would like any further information on how Lifestyle Medicine can help you become healthier and avoid chronic disease, Merlene is a board-certified Lifestyle Medicine fellow and practices at Better Health Practices in Kariong.

Better Health Practices  
43405154



AB ENVIRO  
TREE SERVICES

Local

Qualified and Insured Arborist  
Felling, pruning, deadwooding  
Free Quotes

Contact Asher  
0481 353 982

abenvirotrees@gmail.com

## MANGROVE PRODUCE AND HARDWARE

1668 Wisemans Ferry Rd, Central Mangrove (just 1km from the Crossroads)

### SPRING IS HERE!

TIME TO FERTILISE, GET THE POOL READY  
OR DO SOME PAINTING.  
COME IN AND PICK UP YOUR SUPPLIES  
AND GET STARTED.

OUR TUCKERS SPRING  
CATALOGUE IS OUT NOW.



- ◆ Horse Feed
- ◆ Pet Food
- ◆ Bird Seed
- ◆ Vet Supplies
- ◆ Chemicals
- ◆ Fertiliser
- ◆ Timber
- ◆ Hardware
- ◆ Hand Tools
- ◆ Power Tools
- ◆ Paint
- ◆ Plumbing
- ◆ Fencing
- ◆ Electric
- ◆ Fencing

Mon-Fri: 7:30am -5:00pm  
Sat: 8:00am -2:00pm

Ph: 43731259

SHOP ONLINE AT  
www.tuckersstore.com.au  
or shop.truevalue.com.au

# KULNURA AND DISTRICTS GARDEN CLUB

August 2025

Our garden club members skillfully managed to slot our August meeting in between the rain downpours and windy weather we've been having recently! Our treasurer Ross arranged for us to visit the Pearl Beach Arboretum (AKA Crommelin Native Arboretum) in Crystal Ave, Pearl Beach, and we had a most enjoyable winter's day.

As always with gardening, there was much to learn and do. Did you know that an "arboretum" is a botanical garden devoted to growing trees for conservation, scientific research and educational purposes? Or that the Crommelin Native Arboretum has since 1976 been open to the public for free, making it a great place to see rare and threatened plant species planted across 5.5 hectares? Based on our visit, we encourage you to go online to [www.pearlbeacharboretum.org.au](http://www.pearlbeacharboretum.org.au) and plan a visit to this highlight of the Central Coast. There are walking tracks through the forest full of plants and wildlife (including unfortunately a leech or two waiting in our wet winter-bring some salt to make them release

their fangs if they happen to latch onto you!), and many plaques are provided giving valuable information about the plantings, wildlife and environment.

The Arboretum is run by volunteers, and some were on hand to present a background of the Arboretum, give us a tour through the remnant bushland alongside mature examples of collected and cultivated native trees, and how they propagate native seedlings to save rare and threatened species of flora. We discovered some of our members are 'tree huggers' (see photos)!

The Crommelin Cottage was built by the volunteers, providing a wonderful spot to have our garden club meeting, and the sculpture of the 'artist in residence' had lots of interest. One of our members commented "it was so peaceful down there".

Our competition entries this month included lots of interesting natives, exotics, and fruit/vegetables (lots of citrus which works so well in our climate).

Back at home in our garden during August the lavender and nasturtiums seem to love brightening our day with their flowers, and we have a seemingly endless supply of turmeric and citrus being harvested, along with our very first bananas and feijoa (yum on muesli). Everything is so soggy, making walking across the lawn a mudbathing experience! There's no chance of putting our shiny new tractor to use lest it gets bogged (our



neighbour Dave won't be jealous any more of the new toy)!

Paul Bangay's book "Big garden design: the making of beautiful country gardens" is providing plenty of inspiration for our garden, however our budget we suspect won't stretch to having our garden in his next publication! The photos of magnificent gardens and his choice of plantings are giving us lots of ideas, but our bank balance keeps us realistic.

Being enjoyed with the morning coffee is @Selfsufficientme YouTube channel Self Sufficient Me. Mark Valencia is based in Queensland and has great enthusiasm for growing edible food. As he says: "Look, and

## MANGROVE MOUNTAIN PHARMACY

Monday - Friday: 9am-7pm Saturday & Sunday: Closed

- ◆ Free webster packing & all your pharmacy needs
- ◆ Vaccination
- ◆ Household goods and gifts
- ◆ Parcel point outlet



3/1 Waratah Road, Mangrove Mountain, NSW 2250

Phone: (02) 4374 1457 Fax: (02) 4374 1479

Email: [mangrovemtpharmacy@gmail.com](mailto:mangrovemtpharmacy@gmail.com)

- \* Post & Rail
- \* Fence
- \* Painting
- \* Repairs
- \* Bobcat Hire

## Ricks Rural Fencing

- \* Chain Wire
- \* Wire Stock
- \* All types of rural fencing

*Servicing the Mountain  
for over 30 Years*

**Phone Rick 43731155**

### Sustainable Natives

(wholesale production nursery)

94 Keighley Avenue, Somersby - Sales by appointment.

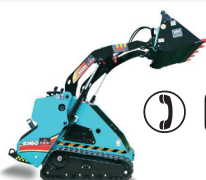
**Contact Jonathan Steeds on 0415465162**  
[jonathan@sustainablenatives.com.au](mailto:jonathan@sustainablenatives.com.au)  
or [Olga@sustainablenatives.com.au](mailto:Olga@sustainablenatives.com.au)  
web: [www.sustainablenatives.com.au](http://www.sustainablenatives.com.au)

We produce a large range of Australian Natives including local species. We supply retail nurseries, landscapers, bush regeneration projects, developers and local property owners with tubestock to semi advanced plants. We offer a design (landscape architecture drawings)/consultation service for your property to add more natives to your landscape.

## MINI DIGGER EXCAVATIONS

25 YEARS CIVIL & INFRASTRUCTURE EXPERIENCE

70CM TO 88CM WIDE TRACKED MACHINES  
BIG & SMALL JOBS • TIPPER • PALLET FORKS



📞 0476 477 635





see the Earth through her eyes... metaphorically means trying to work WITH nature rather than forcing it artificially". His "5 top tips-how to grow a ton of" videos are great quick references when you are about to sow some new seeds or seedlings – our snow peas are just starting a bumper harvest based on his tips! As he says, "Let's get into it"!

Our next meetings will be on Monday 8 September and 13 October. We welcome new members and visitors to Kulnura and Districts Garden Club – it's a wonderful club, and a great way to be introduced to local gardens and gardening knowledge!

Please email [kulnuradgc@gmail.com](mailto:kulnuradgc@gmail.com) for information about meetings, membership, or any other questions.

Getoutintothegardenandenjoy!

Dooralong Dave



**PILATES ON THE MOUNTAIN**

Mangrove Mountain  
Union Church Hall

**PILATES MAT GROUP**

WEDNESDAY 6PM  
THURSDAY 11AM

**PILATES REFORMER**

ONE-ON-ONE  
BY APPOINTMENT

**MELANIE: 0405 453 374**

*All levels welcome*

CUSTOM DESIGN | BUILDINGS | EXTENSIONS | ALTERATIONS | DECKS |

**KDF**

CONSTRUCTION

0410 100 616 | [kim@kdfconstruction.com.au](mailto:kim@kdfconstruction.com.au) | LIC NO. 267735C

**Trial the world's smallest  
AI-powered hearing aid<sup>1</sup>**

**Enquire now about FREE hearing aid  
trial and discounted ear wax removal!\***



Hearing tests & personalised consultations



Tinnitus support & management



Hearing aids & expert fittings



Ear wax removal



### Contact us



02 4311 5511



Central Coast and surroundings



[admin@welfasthearing.com.au](mailto:admin@welfasthearing.com.au)



[welfasthearing.com.au](http://welfasthearing.com.au)

\*Must consent to HSP voucher creation or transfer to Welfast Hearing. HCP eligibility rules apply.  
Reference: 1. GN data on file (2025).



ALWAYS FOLLOW THE DIRECTIONS FOR USE.  
© 2025 GN Hearing A/S. All rights reserved. Belton is a trademark of GN Hearing A/S.



HEARING WELLNESS EXPERTS

YOUR TRUSTED LOCAL AUDIOLOGIST

## Cool burn demonstration

Hunter LLS recently partnered with Worimi Local Aboriginal Land Council to deliver a culturally informed cool burn demonstration on Worimi Country, bringing together community members, land managers, and fire practitioners.

Led by Worimi Elders and knowledge holders, the event demonstrated the ancient technique used to care for Country, manage vegetation, and promote ecological balance.

The burn highlighted how Aboriginal land management practices are deeply connected to seasonal knowledge and respect for the land. The event created a valuable space for learning, collaboration and cultural exchange, reinforcing the importance of Indigenous leadership in natural resource management.



**OPEN 7 DAYS**  
**40 YEARS LOCAL**



**VC DENTAL**  
Care For Life

General Dentistry | Emergency Care | Cosmetic Dentistry  
Orthodontics & Invisalign | Dental Implants | Oral Surgery  
Sleep Dentistry IV Sedation | Wisdom Teeth Removal  
3D CT Scanning | CEREC same-day ceramic restorations

02 4323 1933 | [www.vcdental.com.au](http://www.vcdental.com.au)  
Suite 10, 36-40 Victoria Street, East Gosford NSW 2250

### NEW PATIENTS

- Comprehensive checkup & clean  
Includes up to 5 x-rays  
**No Gap** (with health insurance) or \$290

### OFFERS (all patients)

- Free orthodontic consultation
- Free dental implant consultation
- Free cosmetic makeover consultation
- Sport mouthguards: **No Gap** or \$99

### FINANCE

- We **bulk bill** the Medicare CDBS
- Zip Pay & Zip Money** payment plans
- We partner with **SuperCare**

## ALL ASPECTS OF TREE WORK



- Truck & Chipper
- Cherry Picker
- Excavator
- Forestry Mower

Local Arborist, friendly & experienced team. Insured

Tim - 0412 985 422 or [tijanotreeco@gmail.com](mailto:tijanotreeco@gmail.com)



Follow us

- Site Levelling, • Land Clearing, • Horse Arenas,
- Roadways, • Certified Fill Material

**Michael Schembri 0419 236 788**



## Hunter Transmission Project

**Have your say on a cleaner, more reliable energy future for NSW**

EnergyCo is planning the Hunter Transmission Project to deliver clean, reliable energy across New South Wales. We're currently preparing the environment impact statement (EIS), which will assess how the project could impact people and the environment during construction and into the future.

LT0531

Learn about the project and EIS now, so that you're ready to have your say. Your feedback will help shape the final design.

**Want to learn more?**

Visit our website at [energyco.nsw.gov.au](http://energyco.nsw.gov.au) or scan the QR code.



**MOBILE VET SERVICE**

WE BRING THE CARE TO YOU

SMALL ANIMAL

EQUINE

LIVESTOCK

**0490 877 553**

**BOOK ONLINE AT  
VETONTHEROAD.COM.AU**

FAMILY OWNED AND RUN



# Mangrove Mountain Country Fair – Competition Schedule

## Sections A to F Adults - (16 years and over)

### SECTION A – ART

Entries close at 1pm Friday!!

Category (2 entries per category):

- 1 Painting
- 2 Drawing
- 3 Collage
- 4 Photography (Enlarged)
- 5 Digital Imagery - manipulation
- 6 Sculpture / ceramics

### SECTION B – CRAFT

Category (2 entries per category allowed):

- 1 Patchwork, appliqué
- 2 Lace
- 3 Quilting
- 4 Sewing Machine article \*\*(prize donated by CWA)
- 5 Knitting
- 6 Crochet \*\*(prize donated by CWA)
- 7 Embroidery, tapestry, cross-stitch
- 8 Toys, incl dolls, teddies
- 9 Macramé
- 10 Woodwork
- 11 Metalwork
- 12 Pottery / Glass
- 13 Article made from mostly recycled materials \*\*(prize donated by CWA)
- 14 Halloween Themed article \*\* (prize donated by CWA)
- 15 Other

### SECTION C – COOKING, JAMS & PRESERVES

Category (2 entries per category allowed):

- 1 Man Cake (must be cooked by a male 16 & over)
- 2 Slices (4) \*\* (prize donated by CWA)
- 3 Muffins or Cupcakes (4)
- 4 Biscuits (4)
- 5 Scones (4)
- 6 Other Cake, not iced
- 7 Cooking for a Special Diet
- 8 Orange Cake Iced \*\*(prize donated by CWA)
- 9 Bread
- 10 Halloween Themed baked item \*\* (prize donated by CWA)
- 11 Marmalade
- 12 Jams, jellies
- 13 Lemon, Passionfruit Butter
- 14 Pickles, Relish, Chutney
- 15 Sauces \*\*(prize donated by CWA)
- 16 Preserved fruit or vegetables.

### SECTION D– FLOWERS

Category (only 1 entry per category):

- 1 Arrangement based on a book, TV or movie theme
- 2 Three colour arrangement
- 3 Small arrangement (under 15cm tall)
- 4 Unusual arrangement
- 5 Native flower arrangement
- 6 Arrangement Full of Fragrance
- 7 Collection of Wildflowers (4-8 varieties)
- 8 Rose (1)

- 9 Roses (3)
- 10 Orchid (s)
- 11 Any other bloom
- 12 Cut of shrub

### SECTION E – PHOTOGRAPHY

Entries close at 1pm Friday!!

NO bigger than Postcard size!!

Category (2 entries per category):

- 1 People / Portraits
- 2 Life on the mountain
- 3 Landscape / Weather
- 4 Animals
- 5 Flowers
- 6 Fun
- 7 Action / Sport
- 8 Travel / Urban
- 9 Other

### SECTION F– PRODUCE

Alan Unitt Memorial Trophy awarded for Best Produce point score. More than 1 Entry per Category Allowed.

Category:

- 1a. Lemon (6) 1b. Lime (6) 1c. Orange - Navel (6) 1d. Orange - Valencia (6) 1e. Mandarin (6) 1f. Mixed citrus (6) 1g. Citrus – Other (6) 1h. Grapefruit (6)
2. Stonefruit (6)
3. Nuts, Berry fruits (punnet)
4. Other fruit (6)
5. Basket of Salad Greens
6. Herbs (bunch)
7. Homemade Beverages
8. Honey
9. Fresh Eggs (6)
10. Basket of combination of produce

## Sections G to M Children - (15 years and younger)

### SECTION G – ART

Entries close at 1pm Friday!!

Category:

- 1 Painting
- 2 Drawing
- 3 Collage
- 4 Photography (Enlarged)
- 5 Digital Imagery - manipulation
- 6 Sculpture or ceramics

### SECTION H – CRAFT

Category:

- 1 Sewing (by hand)
- 2 Sewing Machine article
- 3 Knitting
- 4 Crochet
- 5 Embroidery
- 6 Soft Toy
- 7 Fabric painting / dyeing
- 8 Woodwork
- 9 Metalwork
- 10 Pottery / Glass
- 11 Painted eggs (4 eggs)
- 12 Other

## SECTION I – COOKING

*No Packet Mixes!!*

*Category (2 entries per category):*

- 1 Decorated cupcakes (4)
- 2 Biscuits (4)
- 3 Slices (4)
- 4 Muffins or Cupcakes (4)
- 5 Cake (not iced)
- 6 Cake (iced)
- 7 Decorated Cake
- 8 Halloween decorated baked item
- 9 Other Baking

## SECTION J – INVENTION / CREATION

*Category:*

- 1 Working Invention or model, incl drawings & plans
- 2 Article made from recycled objects
- 3 Article made from nature
- 4 Vegetable / Fruit Creature
- 5 Creation with egg/s
- 6 Cardboard fort or castle
- 7 Lego Animal or Bird (own creation only)
- 8 Lego landscape or building (own creation only)

## SECTION K – FLOWERS

*Category*

- 1 Arrangement based on a book, TV or movie theme
- 2 Three colour arrangement
- 3 Small arrangement (under 15cm tall)

- 4 Pretty posy
- 5 Native flora display
- 6 Miniature arrangement (under 5cm tall)
- 7 Decorated saucer (arrangement in wet sand)
- 8 Arrangement in a boot/shoe
- 9 Single Flower

## SECTION L – PHOTOGRAPHY

*Entries close at 1pm Friday!!*

*No bigger than postcard size!!*

*Category (2 entries per category):*

- 1 Family / Friends
- 2 Life on the Mountain
- 3 Places
- 4 Weather /sky
- 5 Animals
- 6 Things
- 7 Fun
- 8 Other

## SECTION M – PRODUCE

*Trophy awarded for Best Produce point score*

*(Combined Age Group)*

*Category*

- 1 Basket of vegetables
- 2 Basket of fruit
- 3 Basket of fresh eggs (6)
- 4 Collection of herbs
- 5 Basket of combination of produce
- 6 Most interesting vegetable from your garden

**BAKERS** – We would love you to bake some extra items that we could sell at the cake stall on the day (with proceeds for the fair). If you can, please attach the ingredients list and wrap it in clingwrap and drop it off with your entries. We would appreciate anything you can bake.

### 16th Annual Mangrove Mountain Contemporary Art Award

The theme for 2025 is “Kintsugi”. Work may be in any medium. It must be delivered to Mangrove Mountain Hall from 3pm to 6pm on Thursday, 16th October or from 8am to 1pm on Friday, 17th October. Entry is free. The winner will receive a cash prize of \$200 and the honour of the award.

### Helen FitzSimons Memorial Family Aggregate Award

When entering, a family may nominate 8 items for the Family Aggregate Competition.

Family definition: must include at least 2 family members, one of whom must be multi-generational.

Points: 1st place – 10 pts, 2nd place – 5 pts, 3rd place – 2 pts. A tied score is decided by number of 1st places.

**Adult Sections (16 years and over):** ONE entry per person in each category unless stated otherwise.

All work should be labelled with name, section and category please.

Art & Photography Entries close 1pm Friday 17th October. All other Entries close 3pm Friday 17th October.

**Children Sections (15 years and younger):** ONE entry per person in each category unless stated otherwise.

All work to have name, class/year, school, section and category clearly marked on entry.

Art & Photography Entries close 1pm Friday 17th October. All other Entries close 3pm Friday 17th October.

**Childrens Sections Age Groups:**

a. Preschool

b. Kindergarten – Year 2

c. Years 3 – 4

d. Years 5 – 6

e. High School up to & incl 15 years

*Example:*

Jane Citizen  
Year 3  
School  
Section J  
Category 2c

### GENERAL RULES OF SHOW

- 1 Entries accepted from 3pm till 6pm Thursday 16th October. Entries accepted from 8am Friday 17th October.
- 2 Art & Photography Entries close 1pm Friday 17th October.
- 3 All other Entries close 3pm Friday 17th October.
- 4 All entries are Free and must remain on display until 3pm Saturday.
- 5 Entries must be collected by 5pm Saturday. Entries not collected will be disposed off.
- 6 Articles exhibited in previous Mangrove Mountain Country Fairs cannot be shown.
- 7 Judges' decisions are final. While all care is taken, no responsibility will be accepted for damage or theft.
- 8 Children's Prize Money must be collected at the Fair. 1st, 2nd and 3rd will be awarded \$3, \$2 and \$1 respectively.



CENTRAL COAST

**SELECT**  
P R O P E R T I E S

**FOR SALE**



Contact Agent

2583 Wisemans Ferry Road, Mangrove Mountain.

	6
	3
	12
	98.49ac

### An Exceptional Blank Space

This RU1 zoned 98.49-acre property in the heart of Mangrove Mountain is about a 40-minute drive to Wahroonga via the M1. It offers the buyer a superbly presented blend of fertile paddocks, exotic trees and hedges and spectacular native Australian fauna and flora, along with three residences and substantial modern shed.

Over 50 acres is cleared and flat to very gently sloping. No agriculture has operated on the property for some time. In the past it has been used for cattle, horses, chickens, orchards and cut flowers. There is an old trotting track on the property for training horses.

The native bush starts at the top of the hill and flows down a gentle slope to the east where it meets a small strip of rainforest along the 200m stretch of Ironbark creek. The bush is home to some wonderfully beautiful plants including Waratahs, Christmas bells, orchids and Gynea Lillies.

There is a water license of 7 mega litres and an enormous amount of tank storage of over 200,000 litres.

The main house is a comfortable, roomy and tastefully internally renovated 3-bedroom home located near the centre of the property. It has a slow combustion wood heater as well as built in robes. Attached is a north facing open 4 bay shed on concrete.

At the south western corner of the property is a roomy 2 bedroom sandy coloured double brick home with slow combustion wood heater and a detached double lock up garage and raised garden beds.

A third, older one bedroom cottage offers large living spaces and enjoys delightful views across the paddocks as well as spectacular sunsets over the blue mountains.

The modern 18m by 10m steel shed features a wide and full-length veranda for taking in the sweeping views to the west across the property.

The vendor has invested heavily in framing the property with beautiful stands of trees and hedging which help present this as a landmark acreage masterpiece with the capacity to fulfill a multiple of different land uses that the discerning buyer could wish to pursue.

Come and take a look at this exceptional blank slate. With 578m of road frontage this property really stands out as arguably one of the best located large properties left on the mountain. Should you sub divide or keep the whole property for yourself?

Contact one of our agents | CALL 02 4324 8486

[www.ccselect.com.au](http://www.ccselect.com.au)

TONY GILMOUR  
0400 723 193



GINA GILMOUR  
0424 663 977



### Office Address

Suite 1,  
2/872 Pacific Highway, Lisarow NSW 2250

P: (02) 4324 8486

E: [info@ccselect.com.au](mailto:info@ccselect.com.au)

# First Rare Echidna Baby Born at the Australian Reptile Park

The Australian Reptile Park is thrilled to announce a truly historic moment: the birth of its very first echidna baby, known as a puggle! This remarkable achievement marks a rare success in echidna husbandry, as these egg-laying mammals - one of only two monotremes in the world - are notoriously difficult to breed in captivity.

The mother, Jon Snow - named long before keepers confirmed her sex via x-ray (yes, the Game of Thrones name is technically meant for a boy) - surprised the Park's team. Keepers first noticed Jon losing weight and refusing her meals, prompting a veterinary checkup. The call from Head Vet Dr Robin at Somersby Animal Hospital brought incredible news: Jon had a tiny puggle tucked safely in her pouch!

A team of keepers rushed to the vet to witness this rare miracle. Echidnas



instinctively curl up into a ball when handled, so Jon was lightly sedated to allow a thorough examination. When her pouch was carefully opened, keepers discovered a jellybean-sized puggle wriggling inside. The echidna's pouch, a unique structure reminiscent of a belly button, is where the egg hatches and the tiny puggle begins its early life.

Life Sciences Manager Hayley Shute was on-site to see the newborn for herself. "I still can't believe it," she said. "To witness this tiny miracle is a testament to our team's dedication and the amazing care we give all our

animals. It's a moment we'll never forget."

The puggle has already hatched from its egg and will remain safely in its Mum's pouch for approximately 90 days, growing until its quills start to emerge. After this stage, it will leave the pouch and begin exploring the world from a burrow crafted by its mother.

The Australian Reptile Park team is overjoyed and proud of their exceptional animal husbandry, which created the perfect conditions for this natural and rare breeding success.

**PRE-PAID  
FUNERALS  
AVAILABLE**

**LOCK IN THE PRICE  
TODAY!**

**DOCUMENT  
YOUR WISHES**

**100% LOCALLY  
OWNED &  
OPERATED**



**CREIGHTONS**  
FUNERAL SERVICE

**Book an appointment at one of our offices or in the comfort of your own home with our mobile representatives.**

*Office Locations:*

**ERINA HEIGHTS**  
376 The Entrance Road

**TUMBI UMBI**  
14 Mingara Drive

**TOUKLEY**  
2 Viewpoint Drive

**PALMDALE**  
47 Palmdale Road

**GREEN POINT**  
460 Avoca Drive

**PYMBLE**  
1083 Pacific Highway  
(cnr Telegraph Road)

**KURRI KURRI**  
182-186 Barton Street

**EAST MAITLAND**  
120 Melbourne Street

**CESSNOCK**  
206 Wollombi Road



**Award Winning Gardens**



**Ph 1300 130 955**

Est. 1843

[creightonsfuneralservice.com.au](http://creightonsfuneralservice.com.au)





#### About Echidnas:

Echidnas are one of only two egg-laying mammals in the world, alongside the platypus. Native exclusively to Australia and parts of New Guinea, these shy, solitary creatures are covered in coarse fur and sharp spines, which act as a natural defence against predators. Echidnas have a highly specialized diet, feeding primarily on ants and termites, which they capture with their long, sticky tongue.

#### About the Australian Reptile Park:

The Australian Reptile Park is a hands-on zoo located in a natural bushland setting on the Central Coast of NSW, just one hour from Sydney or Newcastle. Recently awarded Best Major Tourist Attraction at the 2023 Australian Tourism Awards, the Park offers daily wildlife shows, themed exhibits, and unforgettable encounters with iconic Aussie animals. Open daily from 9am–5pm with free parking and BBQ facilities.

For more information visit [www.reptilepark.com.au](http://www.reptilepark.com.au)

*Chloe Burgess-Jones  
Australian Reptile Park*



**Harvest Festival**  
Central Coast

**Expression of interest** now open to be a part of Harvest Festival and the new evening event, **Harvest Nights**

**Submissions close**  
**22 September 2025**  
[centralcoast.nsw.gov.au/EOI](http://centralcoast.nsw.gov.au/EOI)



Scan QR code  
for more  
information



PRESENTED BY

**centralcoast**  
LOVECENTRALCOAST.COM



## AGED CARE SUPPORT

**Keeping You Independent at Home**

*Mangrove Mountain, Spencer, Wollombi, Cessnock, Yarramalong, Peats Ridge & surrounds*

#### Rapid service commencement for the following services:

- Care Package Coordination
- Home Care Packages Levels 1-4
- Respite & Crisis Care
- Personal Care & Domestic Assistance
- Community Nursing & Health Monitoring
- Garden and Home Maintenance

*Family-focused care that lets you stay in your own home*

**Local provider. Local knowledge. Local support. Local staff.**

**Phone: 0431 004 553**



Email: [admin@centralcoastcare.com.au](mailto:admin@centralcoastcare.com.au)  
Web: [www.centralcoastcare.com.au](http://www.centralcoastcare.com.au)





## Crafting Community:

### Central Coast Craft Club Brings Creativity, Connection & Wellbeing to Gosford

Looking for a laid-back, feel-good way to spend an afternoon? The Central Coast Craft Club is inviting locals of all ages, genders and backgrounds to join a monthly Crafternoon at Funhaus Factory, Gosford – a welcoming space for creativity, connection and community.

Each month, makers and dabblers alike gather to knit, sew, paint, crochet, bead, sketch or simply explore something new in a relaxed and inclusive environment. Attendees bring their own projects and work side by side with other creators of all skill levels. Whether you're a seasoned crafter or a curious beginner, this is a space to unwind, connect and enjoy a few hours of creativity alongside good food, friendly faces and plenty of inspiration.

Craft Club is a monthly creative hangout on the first Saturday of every month where participants not only work on something handmade, but also with new friends, fresh ideas and a sense of accomplishment. Organisers emphasise that it is designed to be an open, welcoming and stress-free experience. "We want people to feel like they belong here – whether



they're coming with friends or arriving alone, there's always a seat at the table. It's about more than making something with your hands – it's about building community and giving people a moment of joy, relaxation and connection," they explain.

Crafting in groups has been shown to offer far more than just fun. Studies highlight that creative activities can reduce stress, boost mental health and promote mindfulness, while the social connections forged in group settings play an important role in reducing isolation and creating a

sense of belonging. Engaging in craft together stimulates the mind, enhances confidence and allows people to express themselves in ways that uplift their wellbeing.

The Central Coast Craft Club is about more than making things – it's about creating experiences, friendships and moments of joy. Every month, Funhaus Factory becomes a place to share stories, learn new skills and explore creativity in a way that is welcoming to all.

*Glitta Supernova  
Funhaus Factory*

# WORKHORSE

Building Services

All Aspects of Carpentry & Construction

Decks & pergolas  
Alterations & additions  
Remedial & maintenance work  
Doors, windows & cladding  
Equine structures

Yarramalong & surrounding areas

Call Dan on: 0449 562 664

Lic No: 456764C ABN: 11238149065

## On The Go Constructions Pty Ltd

Specializing in the building of chicken sheds

Charlie Muscat is well known in the Industry, with over 12 years experience and has a reputation for quality workmanship.

\* New Chicken Sheds \* Tunnel Conversions \* Roofing  
\* Machinery/Farm Sheds/Stables/Lofts/Piggeries \* Coolrooms  
\* All Fabricating services - All frames & trusses are fabricated by On The Go Constructions to Engineer specifications.

Call Charlie on 4374 1114 or 0408 684 719

## VISION FOR LIFE...

For all your concrete & pumping services,  
call Louis on 0418 409 576

## COMPLETE SHED DEVELOPMENTS

- ✓ DA & Council approvals
- ✓ Shed design
- ✓ Earthworks & Concreting

- ✓ Shed Kit supply
- ✓ Shed construction
- ✓ Roofing

Phone: 02 4312 7613

info@completesheddevelopments.com.au




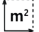
www.completesheddevelopments.com.au





# JUST LISTED

**"28 Acres of Natural Beauty & Serenity"** 19 Private Road 3, Bucketty

 2
  2
  5
  11.31Ha
 

- A triple bay garage/workshop and 6.8m x 7m shed for all your toys
- 20 panel 25KWH solar system with 12.5kwh back-up Sungrow solar battery
- 15.4KVA Primac/Cummins diesel generator with auto grid failure on/off
- Solahart twin solar panel hot water system
- Security system
- Domestic and fire storage water tanks and bore system
- 1 Ecowitt external/internal remote weather monitoring station
- Two Mitsubishi ducted air units, plus split system to cellar
- Haas & Sohn wood heater
- Options to buy fully furnished by negotiation



Indulge in the enchantment of 19 Private Road 3, Bucketty where pure bliss awaits. Step into a hidden haven nestled amidst the breathtaking embrace of Yengo National Park. This extraordinary property spans a majestic 11.31 hectares/28 acres of untainted land, embraced by a vibrant tapestry of lush foliage.

Immerse yourself in vast openness and the coveted north-westerly aspect, with panoramic vistas that stretch as far as the eye can see. Prepare to be captivated by every sunset, accompanied by the harmonious melodies of native birds and the friendly presence of diverse fauna. Unlock the gate to your own private paradise and embrace a life of unparalleled beauty.

A custom designed residence, artfully perched upon a hilltop, unveils its splendour across a captivating split-level layout. As you step into the heart of the home, a magnificent 9m cathedral ceiling instantly elevates the ambiance.



## Your leaders in lifestyle property.

[stonerealestate.com.au](http://stonerealestate.com.au)

**Lifestyle Central Coast**

**Sales and Property Management**



**Scott Wall**

**0413 965 616**

[scottwall@stonerealestate.com.au](mailto:scottwall@stonerealestate.com.au)



# Local RFS Brigade Preparations for Fire Season

The Mangrove Mountain Rural Fire Brigade is preparing for the upcoming fire season and needs your help.



**Beauty,  
Cosmetic Tattooing,  
Eyelash Extensions  
& Makeup**

Salon service & Mobile

**0437 016 592**

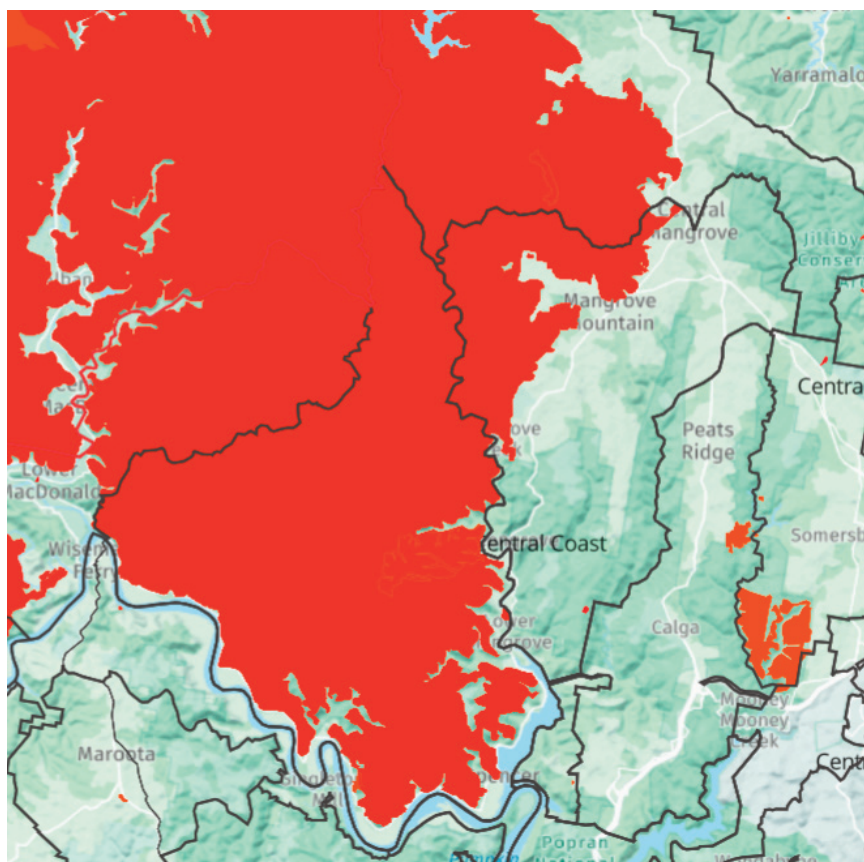
Instagram: @golden\_beauty\_bar\_aus

Did you know that 26 November 2025 marks 6 years since the massive Three Mile Fire. The fire that started off as a lightning strike, finishing at around 45,000 hectares of burnt area with minimal losses.

The fire history (red colouring)

shows that Three Mile Fire burnt the majority of the Spencer Rural Fire Brigade area but only about 1/3rd of the Mangrove Mountain Rural Fire Brigade area.

The vegetation and the depth of burnable fuel is back to a level where



**MANGROVE MOUNTAIN**  
MEMORIAL CLUB LTD.

## WHAT'S ON WEEKLY

### TUESDAY

BINGO from 11am  
\$15 Pizza night  
TRIVIA 630pm every ftnite

### WEDNESDAY

MEAT RAFFLE drawn at 730pm  
\$18 schnitzels (kids eat free)

### THURSDAY

POKER 630pm \$22 steak night  
MEMBERS BADGE DRAW 730pm

### FRIDAY

HAPPY HOUR 4-6pm,  
COCKTAIL HOUR 6-7pm  
MUSICAL BINGO 630pm every fortnight



MEAT RAFFLE drawn at 730pm  
New restaurant specials weekly from 530pm

### SATURDAY

POOL COMP from 630pm. Entry fee \$5

### SUNDAY

Kids eat free

**LIVE MUSIC**  
At mmmc

**SUNDAY 7<sup>TH</sup>  
11-2PM**

Stay tuned for MORE upcoming gigs!!!



Mangrove Mountain  
MEMORIAL CLUB LTD. GOLF COURSE

**ADVERTISE YOUR BUSINESS HERE!**

CHOOSE FROM

In house  
Advertisement  
All day 7 days  
a week

In house  
Advertisement  
plus a golf cart  
advertisement

FOR MORE INFORMATION & COST  
CALL 4373 1129 OR EMAIL CEO@MMMCLUB.COM.AU

Find Us On Facebook & Instagram - 18 Hallards Road, Central Mangrove, 2250 - 02 4373 1129 - [www.mmmclub.com.au](http://www.mmmclub.com.au)





## ARE YOU INTERESTED IN IRIDESCENT GLASS?

Carnival Glass club meetings are held every three months. Central Coast, Newcastle, Sydney.

All welcome



Ring 0447723956 or 0448390077 for date & location of our next friendly get together.

Providing a friendly forum for the exchange of information about Carnival Glass

*Paul Greaves*

Generally, Carnival Glass is press moulded glass that was often hand finished to create different shapes

The glass is formed by being pressed into a mould while in a hot molten state. As it cools, it takes on the shape and detail of the mould.

Once removed from the mould and while still relatively hot, it is sprayed with metallic salts which gives it the "oil-on-water" multicolor iridescent appearance.

it will definitely carry fire, hopefully nowhere near as bad as 2019.

The brigade is looking to carry out a review of fire trails and access points to see what is still effective if this should happen again. To do this we may need to access these trails through your properties and trust that we would receive your support to do so.

Our concern is not only of the west of Wisemans Ferry Rd, but also the east of Wisemans Ferry Rd where major fires have not been for many years so we will be looking at access and trails over the whole of the Brigade area.

The brigade is also personally reviewing the fuel loads by carrying out analysis at various areas in our brigade area to identify any areas of concern.

This will not be a quick process

taking months to complete especially while we wait for dry trails and paddocks.

If you would like to chat about these issues then please feel free to contact myself – Rob Carraro – 0428 113 269 or Tarryn Nester - 0419 149 786.

If you know of any areas that are concerning or prefer to put it in writing then please email: Leadership-MangroveMountain-vol@rfs.nsw.gov.au and we will get back to you.

Thanks for your help in ensuring the Brigade area is prepared.

*Rob Carraro*

*President / Community Engagement  
Officer*

*Mangrove Mountain Brigade  
Central Coast District  
NSW Rural Fire Service  
0428 113 269*



**HUNTER  
EARTHMOVING  
SERVICES**

*"4th Generation of Earthmoving  
on the Mountain"*

**GENERAL EXCAVATIONS & CLEARING  
DAM & CHANNEL CONSTRUCTION, REPAIR & CLEARING  
PRIVATE ROAD/DRIVEWAY CONSTRUCTION & REPAIR**

- 20 TONNE EXCAVATORS
- 25 & 30 TONNE DUMP TRUCKS
- LONGREACH EXCAVATOR (16m)
- SKIDSTEER & ROLLERS
- 30 TONNE LOW LOADER, TRUCK & DOGS

#### **ATTACHMENTS:**

**RANGE OF BUCKETS & AUGERS  
GRAB - HAMMERS - RIPPER  
PULVERISER - MULCHING HEAD  
POWERRAKE - SLASHER**

**Wayne Hunter - 0431 761 338  
E [hunterearthmoving@bigpond.com](mailto:hunterearthmoving@bigpond.com)**

**thinkwater®  
CENTRAL COAST**

**AGRICULTURE • COMMERCIAL • RURAL • INDUSTRIAL**

**Australia's Leading Water Solutions Network**

- ◆ Water Treatment
- ◆ Irrigation Systems
- ◆ Mowers & Ride-Ons
- ◆ Fire Protection Systems
- ◆ Water Tanks
- ◆ Pump Systems
- ◆ Fertigation
- ◆ Pipes & Fittings
- ◆ Chainsaws & Generators
- ◆ Repairs

**Ph 4373 1466  
780 Peats Ridge Road, Peats Ridge**

**[www.thinkwatercentralcoast.com.au](http://www.thinkwatercentralcoast.com.au)**

# Peats Ridge & Districts CWA Community News Report

The annual CWA Awareness Week is from 7th – 13th September 2025, and this year's theme is seasonal eating, food sustainability, food waste, food security, food miles and paddock to plate.

These terms highlight the importance of understanding our food's origins, how we use it, and how we can make more sustainable and informed choices in both consumption and sourcing.

Australia is an affluent country, but there is an alarming number of

Australians who do not have enough food to eat, alongside food waste increasing more than ever before.

A 2021 food waste study revealed an average 312kg of food per person per year in Australia is wasted, with 30% coming from households.

During Awareness Week, the CWA will be advocating to increase the public's understanding of the benefits of seasonal eating, and highlighting the health, economic and environmental benefits to consumers and local producers.

In the lead-up to this year's campaign, the Peats Ridge and Districts Branch hosted a Thermomix demonstration event. The TM7 was thoroughly put through its paces with a range of recipes, showcasing its versatility and efficiency. What stood out most was how significantly it reduced the need for processed foods. This one appliance handled all the hard work with ease. It



also contributed to minimal food waste and reduced packaging, as it allowed for precise ingredient use without the need to buy in bulk unnecessarily. There were no overcooked meals or "whoops, into the bin" moments. Any kitchen tool that streamlines cooking while cutting down on waste and cost is a welcome addition—and the Thermomix certainly proved its



**OUTLAND Mechanical & Maintenance Service**  
Licence No. MVRL54125    ABN 14814837840


**Mobile Diesel Mechanic**  

- Specialising in Small Fleet Diesel Service
- Tractors • Farm Machinery • Mowers
- Earthmoving Machinery
- Welding

**John: 0427 660 752    jlhellyer67@gmail.com**

**TKG**


**Welding & Fabrication**

- ✦ Mobile welding ✦ Fully equipped service truck
- ✦ Heavy machinery repair & modifications
  - ✦ Air arc gouging ✦ Hard facing
  - ✦ Steel horse & cattle yards
- ✦ Sheet metal work, gates and railings

**Tim Green 0427 462 717**  
timdgreen1971@gmail.com  
www.tkgweldingandfabrication.com



worth.

The Peats Ridge & Districts branch have been discovering the joys of preserving seasonal produce through freezing and pickling while also making jams and relishes with an abundance of fruits and vegetables, all to be enjoyed when the local season has ended.

If you would like to contact us and learn more about CWA you can find us on our NEW Facebook Page 'CWA Peats Ridge & Districts Branch' or send an email to [cwaofnswpeatsridge@gmail.com](mailto:cwaofnswpeatsridge@gmail.com)

*Donna Hobday*

## MOUNTAIN DISTRICTS MEN'S SHED NEWS

Great to see all the folk who were able to come along to our sausage sizzle, held at the back of the Mangrove Mountain Union Church on the afternoon of Saturday 23rd August.

Our special thanks to John O'Toole who managed to successfully sizzle all the snags despite half a dozen men standing around the BBQ offering (sometimes conflicting) advice on the better ways to do it all.

Quite a few people took the opportunity to complete their membership forms and pay our modest membership fee of \$40.

Before watching the glorious sunset the committee had the pleasure of sharing the news that we have recently had donated to us a Colorbond shed, which after necessary approvals and site works we plan to erect as our HQ and workshop on the grounds managed by the Mangrove Mountain Union Church Trust.

The donation of the shed (approximately 6 x 10m), organised by the Australian Men's Shed Association Zone Rep' for our area Grant Gorton, has been made by the NSW Dept. for Youth Corrections. We are very grateful for this tremendous boost which will

see us set up so much sooner than we could have anticipated.

We also discussed plans for signage which we will be doing for the Country Fair, and look forward to being able to soon meet up with tools to put it together. Current, paid up members will be able to contribute to this project.

The Committee looks forward to many more members join our Mountain Districts Men's Shed soon.

Please contact me at [simonperry@fastmail.com](mailto:simonperry@fastmail.com) to request a membership form.

*Simon Perry*  
President

*Mountain Districts Men's Shed Inc*



### Notification of wild dog and fox control program

Greater Sydney Local Land Services will be leading an integrated wild dog and fox control program in the Central Coast with support from NSW National Parks & Wildlife Service, Central Coast Council and the Forestry Corporation. This coordinated program is part of ongoing work to reduce pest animal numbers and their impact on primary production and native wildlife in these areas.

1080 wild dog and fox ground baits as well as Canid Pest Ejectors will be used on the listed properties below from **Monday 15 September 2025 to Friday 31 October 2025**. Pets and working dogs may be affected (1080 is lethal to cats and dogs). **Please restrain all domestic pets and working dogs and ensure they do not enter the baiting locations during this time.** In the event of accidental poisoning of domestic pets seek immediate veterinary assistance.

60 Hitchcocks Lane Dooralong  
33 Dunks Lane Jilliby  
51 Brush Creek Road Cedar Brush Creek  
13 Springs Road Kulnura  
1897 South Tacome Road Tuggerah  
78 Wirrinda Road Somersby  
20 Wirrinda Road Somersby  
3653 Wisemans Ferry Road Greengrove  
1398 Wisemans Ferry Road Somersby  
611 Kyola Road Kulnura  
15 Murraba Road Kulnura  
16 Murraba Road Kulnura  
52 Meriki Road Mangrove Mountain  
625 Ravensdale Road Ravensdale  
602 Ravensdale Road Ravensdale  
304 Ravensdale Road Ravensdale  
277 Ravensdale Road Ravensdale

1 Peats Ridge Road Somersby  
McPherson State Forest  
Olney State Forest  
1208 Yarramalong Road Wyong Creek  
1186 Yarramalong Road Wyong Creek  
1252 Yarramalong Road Wyong Creek  
2762 Wisemans Ferry Road  
Mangrove Mountain  
Broken Bay Sport and Recreation  
Centre Patonga  
720 The Ridgeway Matcham  
422 Oak Road Matcham  
197 Oak Road Matcham  
The Scenic Road Bushland Reserve  
557 George Downes Drive Kulnura  
59 Yorky Watera Road Kulnura

**If you would like to participate in a future program or have any questions, please contact Greater Sydney Local Land Services on (02) 4724 2100.**

IL0075

### PRINTING SERVICES

Lynwood Press  
Your local printing service



✧ Flyers                      ✧ Business Cards  
✧ Booklets                  ✧ Graphic Design  
✧ Stationery                ✧ Duplicate Books

***Publishers of the "Community News"***

Ph/Fax: 4374 1039 Mob: 0412 669 649  
Email: [enquiries@cnews1.com.au](mailto:enquiries@cnews1.com.au)

### BLISS EARTHWORX

- Excavator with Buckets, Hammer, Auger & grabs.
- Posi track with 4in1 bucket, forks & spreader bar
- Tipper 6 ton                      • Posi track slashing

#### **Excavation - Concrete - Landscape**

Facebook, Instagram  
Email: [blissearthworx@gmail.com](mailto:blissearthworx@gmail.com)

▲ Based in Somersby ▲

**0409 456 003**

## REGULAR ACTIVITIES & MEETINGS

### RURAL FIRE SERVICES

Bucketty RFS	Weekend Training Station Maintenance General Meeting	3rd Sat, 9am-12 pm, breakfast 8.30am Every Thurs as required, generally 10am-1pm 3rd Sat in even months, at 1pm, All welcome bucketty@lowerhunterffrfs.com.au 4998 8130
Calga-Mt. White RFS	General meeting Training Information & updates Contact	3rd Mon of the month, 7.30pm all welcome Every Monday 6.30 except public holidays Facebook.com/calga/mtwhiteruralfirebrigade/ Captain.calgamtwhite@ccrfs.org.au - Zack Winslade.
Kulnura VBFB at Greta Rd Station	General meeting Training	1st Wednesday of the month, 7.30pm 3rd Wednesday of the month 7.00pm
Mangrove Mountain RFS Bloodtree Rd	General Meeting Training / Maintenance	Last Wednesday of the month, 7 pm, All Wednesday's except last of month, 7 pm
Spencer RFS	General Meeting Training Maintenance	2nd Monday of the month Meeting 6.30pm 3rd Monday 6:30pm 4th Monday 6:30pm E: captain-Spencer-vol@rfs.nsw.gov.au 0415 668953. 4778 Wisemans Ferry Rd
Somersby RFS	General Meeting Training/Maintenance	First Wed of the month 7.30pm at the Station Every Wed night 7.30 at the Station (except before Wed general meeting)
Yarramalong RFS		Information: <a href="http://www.facebook.com/YarramalongRuralFireBrigade/">www.facebook.com/ YarramalongRuralFireBrigade/</a> Phone contact: 0494 344 030 Email: volunteer@yarramalongrfs.org.au

### COMMUNITY & SOCIAL

Central Coast Plateau Chamber of Commerce	First Tuesday each month 7.00PM MMMC
Coastlink Friendship Group	Wed 9.30am-2pm at the Health Centre, Nurses Rd, Central Mangrove
Country Women's Association (Somersby)	Second Wed of each month, at Somersby Hall Wiseman's Ferry Road, Somersby, contact Sue, 43721280 or 0407768000.
Country Women's Association (Peats Ridge & District)	Third Monday of the month at the Kulnura Hall. Any enquiries please contact Christine 0419 400 163.
Country Women's Association (Mangrove Mountain Evening Branch)	2nd & 4th Tues of the month, 4-8pm at Mangrove Mtn Union Church, 2154 Wisemans Ferry Rd, MMtn. General meeting 6pm 2nd Tues. Ph Judy 43771728
Gosford North Inner Wheel club	2nd Wed each month 11am at Phillip House in Kariiong. Contact: Glenis Ph: 0400 486 760
Kulnura & District Garden Club	Second Monday, 9.30 for 10am start. Jacqui Maxwell 0455364262 kulnuradgc@gmail.com
Kulnura Tuesday Tennis	Tue 9.30am-12.30pm, Kulnura Tennis Courts. Enquiries: Alison Palmer 0427731548.
Ladies of the Valley Afternoon Tea	1st Tues, 1pm to 2.30 at Angels Sussurri Cafe Yarramalong. Margaret Dale 0411104770
Mangrove Singers	1st & 3rd Tue, 6.00 7.30pm at Mangrove Golf Club, enquiries - Kim 0401516501
Mangrove Mountain & Districts Community Group	1st Thurs of the Month, excl Jan. 7.30pm, Mangrove Mtn Hall.
Mangrove Emergency Planning & Communications Committee	Contact: mepccinc@gmail.com, 0412669649
Mangrove Mountain Country Fair Committee Meeting	3rd Thu of mth except Jan, 7pm, at Union Church Hall. Pres - Steve 0455 155 075
Mountain Districts Association (MDA)	<a href="http://www.mountaindistrictsassociation.com.au">www.mountaindistrictsassociation.com.au</a> secretary@mountaindistrictsassociation.com.au
Mountain District Football Club Meeting	Second Tuesday of the Month 6.30pm at the Mangrove Memorial Club
Probus - West Gosford	2nd Thu. Ph Elaine Burrows 0412988353
River Cares for the Lower Hawkesbury River District	President Marlee Maxwell Email rivercaresinc@gmail.com
Rotary Club Meeting	Friday 7.15am at Phillip House. 43404529
Spencer Community Progress Group Inc	President Brad Maisey, Community Meetings, 0436482201, spencercpg2@gmail.com
Spencer Community Ladies Social Club	Last Fri of month. 12.00 noon Spencer Community Centre, Jennifer Dayes 4377 1364 Articles to: spencercpg2@gmail.com
Newsletter	
Wisemans Ferry Community Men's Shed	Tues & Sat, 9am-5pm. Contact: Alan Hunt 4566 4626 or Adrian Acheson 0448 833 781

### SPIRITUAL

Anglican Service - Mountain Districts	Every Sun 8am at Peats Ridge Scout Hall, Sunday School during school terms
Mangrove Mountain Union Church Trust	Committee Meeting 3rd Monday, 7.30pm at the Mangrove Mountain Union Church Hall
Mountain Districts Christian Church	Services 9.30am 2nd & 4th Sundays. Bible Study 4.30pm 1st & 3rd Mondays. Mangrove Mountain Union Church
St Barnabas Christian Service Yarramalong	Every Sunday, 9.30am. (Easter & (Christmas Carols dates to be advised)

(cont'd next page)

## LIVESTOCK MARKET REPORT



### Maitland Liveweight Cattle Sale 18th August 2025

750 cattle yarded this week at Maitland. 650 Trade/Yearling cattle and 100 export.

Trade job was firm. Export Job remained firm.

- Restocker steers up to 250kg made 470c/kg to 590c/kg
- 250kg-300kg made 430c/kg to 580c/kg
- 300kg to 380kg made 420c/kg to 500c/kg
- Restocker Heifers up to 250kg made 400c/kg to 480c/kg
- 250kg-300kg made 390c/kg to 470c/kg
- 300kg-380kg made 390c/kg to 460c/kg
- Butcher Vealers made 400c/kg to 480c/kg
- Yearling Steers to Feed made 460c/kg to 510c/kg
- Yearling Heifers to Feed made 390c/kg to 480c/kg
- Bullocks made 400c/kg
- Cows made 300c/kg to 360c/kg
- Bulls 200c/kg to 250 c/kg

### Maitland Liveweight Cattle Sale 11th August 2025

410 cattle yarded this week at Maitland. 360 Trade/Yearling cattle and 50 export.

Trade job was firm to 20c dearer. Export Job remained firm

- Restocker steers up to 250kg made 460c/kg to 590c/kg
- 250kg-300kg made 430c/kg to 580c/kg
- 300kg to 380kg made 420c/kg to 560c/kg
- Restocker Heifers up to 250kg made 400c/kg to 480c/kg
- 250kg-300kg made 390c/kg to 490c/kg



- kg
- 300kg-380kg made 390c/kg to 465c/kg
  - Butcher Vealers made 400c/kg to 430c/kg
  - Yearling Steers to Feed made 460c/kg to 500c/kg
  - Yearling Heifers to Feed made 390c/kg to 460c/kg
  - Bullocks N/A
  - Cows made 300c/kg to 400c/kg
  - Bulls 280c/kg to 330 c/kg

A friendly reminder that we are often in the area seeing clients and looking at their livestock and if you would like us to call in be sure to give us a call.

Like and share our Facebook page!

Keep up to date with [bowelidbury.com.au](http://bowelidbury.com.au)

Michael Easy & Rodney McDonald  
Bowe & Lidbury  
52 Kyle Street, Rutherford NSW 2320  
P: 02 4932 7066

**..KSR..**  
**NEW**  
**GRAVEL**  
**ROADBASE**  
**\$50/T**  
**DELIVERED**

**0411 868 437**

## REGULAR ACTIVITIES & MEETINGS (cont'd)

Catholic Service - Central Mangrove

- Spencer
- Wollombi
- Yarramalong

Divine Retreat Centre

Serbian Orthodox

Kariong Community Baptist Church

Restitution Ministries  
Independent SDA Church

### YOUTH

Junior Girl Guides 5-10

Girl Guides 10-15

Scouts, Cubs & Venturers  
Peats Ridge Scout Hall

### HISTORICAL

Brisbane Waters Historical Society

Dharug & Lower Hawkesbury  
Historical Society Inc.  
First Fleeters Central Coast Chapter

The Pearl Beach Aboriginal History Group

Wyong District Museum &  
Historical Society

### ACTIVITY/HOBBY

Carnival Glass Club

Central Coast Junior Motorcycle Club Inc.

Coastal Communicators Toastmasters

Saturday Craft Group/Spining  
and bobbin lace  
Yarn group (knit, crochet etc)

### HALL BOOKINGS

Kulnura Hall  
Mangrove Mountain Hall  
Mangrove Mountain Union Church & Hall

Somersby Hall and Mountain Districts  
Culture and Heritage Centre  
Yarramalong school of Arts / Hall

Saturdays 5pm St. Dionysios Greek Orthodox  
Church, 21 Nurses Rd, Central Mangrove,  
Contact Nai Hereford 0405 558 669  
Holy Trinity Church, 2nd Sat 4pm, Phone  
0412 201 851 as times may change.  
2nd & 5th Sunday of the month, 4.30pm Mass  
at St Michael the Archangel, Wollombi.  
1st Sunday each month, 11.00am St. Barnabas  
All welcome. Enq 0428 438577

Daily Holy Mass 8.00am to 8.30 am  
Last Sun, 9am-4pm, One Day Retreat.  
160 Hensons Road, Somersby Ph 0243721598  
2nd & 4th Sun. of the month. 10 am, followed  
by luncheon, tea, coffee, cakes (cost \$20).  
1184 Peats Ridge Rd, Peats Ridge  
Sun @9.30am, Church & Kid's Program,  
Philip House, Mt Penang Gardens, Chris  
Clarke email [pastorkcbe@outlook.com](mailto:pastorkcbe@outlook.com)  
10am every Saturday, Mangrove Mountain  
Union Church.

Kooree Guide Cabin, 5.00pm - 6.30pm  
Mondays in school term,  
Kooree Guide Cabin, 6.00pm-7.30pm  
Mondays in school term, Contact 0417451764  
for further information  
Cubs meet 6.30pm - 8.30pm Wednesdays  
Scouts meet 7.00pm - 9.00pm Tuesdays  
Venturers meet 7.00pm - 9.00pm Mondays  
Contact 0460 696 941

25-27 Henry Kendall St., West Gosford, Ph:  
4325 2270. [www.henrykendallcottage.org.au](http://www.henrykendallcottage.org.au)  
Last Sat of month. All welcome, contact Jan  
Kofron 0405321478 [jankofron@optusnet.com.au](mailto:jankofron@optusnet.com.au)  
2nd Sat of the month, 10.00am for 10.30,  
Point Clare Hall (except Jan & Dec). Contact  
Margaret 0409467710 or Gavin 0406645842.  
3rd Fri of month 7.30pm Pearl Beach. Peggy  
0411754577 [pbaboriginalhistory@gmail.com](mailto:pbaboriginalhistory@gmail.com)  
Sun to Thurs, 10am-2pm, other times by appt.  
43521886 or [info@alisonhomestead.com.au](mailto:info@alisonhomestead.com.au).  
website: [www.alisonhomestead.com.au](http://www.alisonhomestead.com.au)

Meetings held every three months. Central  
Coast, Newcastle, Sydney. Ring 0447723956  
or 0448390077 for details.

Meeting dates: [ccjuniormotorcycleclub.org.au](http://ccjuniormotorcycleclub.org.au),  
FB: "Central Coast Junior Motorcycle Club  
Official". David Smith 0412 506 503

1st & 3rd Thurs of month, 6:45pm to 8:45pm  
at Doyalson-Wyee RSL. Debbie 0421216952  
2nd Sat of the month Somersby Hall (10am to  
2pm) cost \$5 per person Carmen 0434071305  
Third Sun 2pm, Angels Sussurri Yarramalong.  
Contact Kerry Watson 0404059167

Contact Central Coast Council.  
Hall bookings Ryan Howard 0405416289  
Church & Hall bookings 0412669649  
[mmucsecretary@outlook.com](mailto:mmucsecretary@outlook.com)  
Hall bookings: 0413 359 655  
or AH 4373 1488  
[enquiries@yarramalonghall.org.au](mailto:enquiries@yarramalonghall.org.au)  
<https://yarramalonghall.org.au>



**JEREMY AOUN**

PLUMBER | GAS FITTER | ROOFER

OVER 30 YEARS EXPERIENCE  
ALL YOUR RURAL PLUMBING NEEDS

**Mobile: 0424 894 225**

Licence: 134701C

Email: [aussieplumbing1@gmail.com](mailto:aussieplumbing1@gmail.com)

**CNS Electrical**

Lic No. 214132C

Your local Electrical Contractors  
on the mountain, specialising in  
Rural, Domestic, Commercial and  
Industrial works, including:  
Excavation, Trenching, Mains & Sub-mains,  
Voltage Calculations & Future Planning.



**Call Cameron for a quote on: 0438 695 600**

Office: 0480 467 894

Email: [admin@cnsselectrical.com.au](mailto:admin@cnsselectrical.com.au)

## Adult Learners Week

Adult Learners Week 2025 is back for its 30th year from 1 to 8 September and everyone is invited to Celebrate Learning Together during this special milestone.

This annual UNESCO event, coordinated by Adult Learning Australia and supported by the Australian Government, highlights the ways adult learning brings people together, opens up new possibilities and helps people and communities grow. Kathleen Priestly, President of Adult Learning Australia, said that during this special 30th anniversary, adult education providers across Australia will promote the diverse ways we learn together - in the classroom, community, paddock, kitchen and around the table. "From growing food to growing potential, we want to celebrate the learning that nourishes our communities, fosters inclusion and connects us all," she said.

Ms Priestley said that adult learning is about more than gaining knowledge. "It's about building confidence, making connections, and creating pathways to new opportunities, whether that's further study, a new job, or a fresh start. It's how people from all walks of life renew their futures and shape their own stories."

This year's Adult Learners Week will also "shine a light on the incredible learning happening outside our

major cities - in rural towns, farming communities, and regional centres across the country. That's why we're launching this year's celebrations in a regional area, to show that learning can happen anywhere and everywhere."

The 2025 Adult Learning Week launch will be held in Devonport, Tasmania, from 1pm on Monday 1 September.

The importance of adult learning is underscored by the following statistics: in Australia today

- 44% of adult Australians aged 15-74 have very low literacy skills and 54% have very low numeracy skills

- 9.4% of Australians remain highly digitally excluded, particularly people over 75 years of age, remote First Nations people and those who did not complete secondary school

- At a time when the workplace requires people to be better qualified, 1 in 5 young people are leaving school early

However, progress is being made:

- Nearly 3.2 million people aged 15-74 years (16%) are currently learning, with some 30% studying at adult education or training institutions

- 84% of people who finished a non-school qualification in 2023 were employed in 2024

- 80% of people with non-school qualifications are employed, compared to 58% without.

- Students who completed foundation skills training alongside VET were 6% more likely to gain employment

with 65% of VET graduates reported improved employment outcomes

- The National Foundation Skills Strategy 2025-2035 is working to enhance the lives of people who struggle with reading, writing, maths, or digital skills

- A national study is underway to better understand adult literacy, numeracy, and digital skills needs.

Adult Learners Week will feature inspiring stories of adult learners who have transformed their lives through learning and education. They include:

Bridie Searle, NSW

At just 20, Bridie is the Founder of ReadySkills, where she teaches life skills and supports learners from diverse backgrounds. A hands-on learner herself, she credits the balance of theory and practice in her training for her success. In 2023, her achievements were recognised nationally when she was named both NSW and Australian Trainee of the Year.

Jeff Richardson, Queensland

Jeff is a proud Mandandanji man in his 70s whose life reflects strength, service, and a deep connection to community. Jeff left school early and learned through life and work. Later, he went on to complete several Diplomas. Now retired, Jeff continues to value lifelong learning, storytelling, and the power of family and culture. He believes there are always new things to learn - at any age.

*Adult Learning Australia*

## The Grass Cutters

- Slashing
- Rock picking
- Farm cleaning and clearing
- Cultivation and more
- Obligation-free quotes



Call **0419 412 993**  
Email [pat@thegrasscuttersrus.com](mailto:pat@thegrasscuttersrus.com)

**See us in action at: [thegrasscuttersrus.com](http://thegrasscuttersrus.com)**

## Heaths Rural Fencing

Post & Rail • Chain Wire  
Wire Stock • Colourbond • Paling  
Fence Painting • Repairs

**Ph: 0492 923 355**



PTY LTD

**DIVERSE**

TRADING AUSTRALIA

Resource Recovery | Plant Hire | Site Remediation

Roads | Shed Pads & Sites | Dams | Council Approved Clean Fill

**CALL 0408 843 677**

[admin@diversetradingleustralia.com.au](mailto:admin@diversetradingleustralia.com.au)

## Atlantic Oil Distributor

We deliver to the Mountain Districts and surrounding Central Coast suburbs for free

Full range of Atlantic Stock in store and online  
Everything from oil, grease, degreaser, truckwash, brake cleaner and much more



**Ring Jenny for trade pricing  
and quotes 0243 88 5911**

**U6, 17 CRAFTSMAN AVE, BERKELEY VALE**  
[www.coastandvalleyoil.com.au](http://www.coastandvalleyoil.com.au)



## CLASSIFIED ADVERTISEMENTS

These columns will be set aside each issue for residents to advertise inexpensively and effectively in their own local paper. If you have anything you wish to sell, buy, swap, etc., ring 4374 1039 or 0412 669 649 during office hours. Rates start at \$4.00.

### FOR SALE

**CHICKEN FARM EQUIPMENT** including Atlas Copco 125KVA generator, biobin, plastic scratch trays, feeders, silos, brooders, fans, foggers, gas tanks, pumps etc. Phone Jim 0414 777 748

**WATER LICENCE** Kulnura Mangrove Mountain Ground water source 30 Megs, open to offers, call 0407761375

**FIREWOOD** \$150/bin phone 0419412993

**GALE'S CITRUS** - Bagged Citrus trees in various sizes available ph. 4372 1408 or mobile 0421 196 631

**HAY FOR SALE** Lucerne, Oaten, Wheat, Rye, Rhodes. Big & Small bales, for Horses & Cattle. Call Mitch 0411562782

### WANTED

**OLD BATTERIES**, will pickup, phone 0413 975 107

### AGISTMENT

**HORSE AGISTMENT AVAILABLE.** Full care. Group and individual paddocks with shelters. Full size sand dressage arena, grass jumping arena. Located walking distance to Peats Ridge Village and Café. Call Bronte 0428603849

### SERVICES AVAILABLE

**METAL PATIOS, INSULATED ROOFS & Carport Builder.** Custom made awnings, Decks, Carports & Sunrooms 0420906499

**ROOF AND GUTTER CLEANING**, call Alan on 0427606303. Call for a free quote

### SERVICES AVAILABLE

#### SMALL ACRE MOWING Excavation, Environmental Remediation 0412 228 718

**KELLY'S KLEANING SERVICE.** Cleaning the mountain & the coast. Call Kelly on 0420541196

**HORSE RUG REPAIRS** - reliable prompt service. Pick-up & drop-off available for large quantities. Ph 0405 620 394

**BRICKLAYING & Render repairs.** Adrian 0408347737. Lic 98665C

#### ALL TERRAIN SLASHING

Track mounted slasher/mulcher and excavator mounted flail mower. Sloping land, fire breaks, hazard reduction of low vegetation, (lantana, etc) fence line clearing, broad acre slashing. Free quotes. Bliss Earthworx 0409456003

**EXPERIENCE TRANSFORMATIVE HEALING** through energy medicine. Supportive sessions for people & animals to restore balance & explore the root cause of issues. Peta - Spirit Ignition email: spiritignition77@gmail.com

#### HORSE BURIALS

Specialising in the on-site burial of your precious horse. Ph Craig 0411 2888 12

**HANDYMAN** (with own tools) looking for work in the greater Lower Mangrove, Mangrove Mountain, Central Coast area. Also have Forklift licence. Phone 0414 912 423

**Laurie Douglass Plumbing**  
Plumber, Drainer, Gasfitter, Roofer -  
Ph 4373 1257 Mob 0407 008 488

**OOST Painting Contractors** - Lic 71725C  
Quality & cleanliness assured.  
For a free quote call David 4356 1449 or  
0417 234 094. Yarramalong Local

**PEST CONTROL - Servicing the local area. A.T.S. Pest Control Services Phone Tony 4373 1157 Mob: 0427 731 157**

**MISTY MOUNTAIN RURAL CONTRACTORS** - Earthworks, Irrigation, all services available Ph 43530990 or 0418221495

**CERAMIC CLASSES & OPEN CERAMIC STUDIO** (By appointment-Ph: 0411870090)

JOIN me in an unforgettable journey with clay & artistic exploration!! Reserve your spot today  
SIMPLY BOOK on foxeystudio.com or email me foxeystudio@gmail.com

**LEVEL 2 QHHT Practitioner, Soul Speak Practitioner and Holistic Household Cleansing Consultant.** For further info call Sharyn on 0408 967 507, email to shazzaunitt@protonmail.com or visit www.soul-speak-healing.com

**TOWN 'N COUNTRY FLOOR SANDING & POLISHING** New & old floor boards, parquet, verandahs, stairs, walls ceilings, re-coating, staining & painting ect..free quote ph Stuart 0400076261 in services available.

**AIRCONDITIONING, BUILDING, CARPENTRY** - Local service, 14yrs experience in aircon, 22yrs experience in building & carpentry. Call Ken 0412 842 920

**RURAL FENCING** - Post & rail, wire stock, chainwire, colourbond, paling etc. Also Landclearing. Phone Rick 4373 1117

**ALL COVERS & CANVAS WORK!**  
Boats, Vehicles & Horse floats re-trimmed, cover & horse rug repairs, no job too small!! Servicing the mountains & the valleys. Call Alan on 0414 993 669 or Louise on 0410 646 200. located at Yarramalong Road Wyong Creek.

# WATER BORES

**Local drilling company  
based at Ourimbah**

**Contact: Paul Slade**

**Ph/Txt: 0408 471247**

**email:**

**Sladedrill@bigpond.com**



## Bikes n Motors

**Motor Vehicle Repairer  
Service & Repairs**

**Motorcycles ★ Light Vehicles  
Cars ★ ATVs ★ Buggies ★ Quads**

**Call & Book Now**

**PH: 0491 622 080**

1154 George Downes Drive,  
Kulnura, NSW, 2250.  
★ Behind Jerrys' Cafe ★  
bnm@bikesnmotors.com.au  
www.bikesnmotors.com.au

**PINK & BLUE  
SLIPS**

Licence No:  
MVRL56584

Contractors Licence No: 367849C



# **WATERMAN**

## **EXCAVATIONS**

**PH: 0438 617 851**

Mulching - Horse Arenas - Certified Fill

Sands - Soils - Mulches - Woodchips  
Gravels - Pebbles - Rotomill

Excavators - Tippers - Grader - Dozer - Pozi Track - 6x6 Dump Truck

## **CROSSROADS AUTOMOTIVES**



Terry Kyriacou

Mon - Fri: 7:30am - 5:00pm

Saturday: 7:30am - 12:00pm

SPARE PARTS

LOG BOOK SERVICES

MECHANICAL REPAIRS

**Ph: 4373 1774**



Cnr of Wisemans Ferry Rd. & George Downes Drive, Central Mangrove

**AUTHORISED INSPECTION STATION (INCL LPG)**

# **WARD Septics**

## **and Water Tank Cleaning**

- \* Large and Small Vac trucks
- \* Licenced plumber and drainer

**Call Paul 0438315514**

 **SepticCleaning.com.au**



- AGRICULTURE • INDUSTRIAL • DOMESTIC

Licence No - 269888C

**\*24 HOUR EMERGENCY CALLOUT SERVICE\***

**Ph: 4322 3333**

**Fax: 43223433**

Email: [sales@girrigation.com.au](mailto:sales@girrigation.com.au)

Web: [www.girrigation.com.au](http://www.girrigation.com.au)

Unit 2 254 Manns Road, West Gosford NSW 2250



## **K&T PROPERTY CONSULTANTS PTY LTD**

Real Estate Valuers & Land Economists

### **ROBERT MEGGS FAPI CPV**

*providing independent property valuation advice, including:-*

- Stamp Duty, CGT, GST & Retrospective Valuations
- Probate & Estate Valuations • Insurance Valuations
- Valuations for Family Law • Pre-Sale/Auction Advice
- Land Value & Compulsory Acquisition Valuations

500 Kyola Road  
KULNURA NSW 2250

Telephone (02) 4376 1451

Mobile 0429 44 33 10

Email: [ktpropty@ozemail.com.au](mailto:ktpropty@ozemail.com.au)

## **Misty Mountain** *Rural Property Development Services*



- agricultural consultants
- pasture improvement
- fertilizer spreading
- weed spraying
- all tractor work 4/2WD
- soil conditioning
- irrigation install/design
- fencing & stables
- crop planning & planting & all excavations
- concrete slabs Lic. R94321
- property evaluation & planning & management
- fork lift hire

Ex-Dept. Agriculture Officer with 45 years  
experience in the local district.

Greg Koutoulas is the man to call on 0418 221 495



## **Stop Water Shop**

Authorised Dealer

**ONGA, DAVEY and  
GRUNDFOS PUMPS**



## **K. W. & M. E. WEST Pty. Ltd.**

1650 Wisemans Ferry Road,

Central Mangrove

Phone 4373 1164 Fax 4373 1049

## **PUMP REPAIRS AND SERVICE**

### **Trading Hours**

Mon - Fri

7.30 am - 5 pm

Sat 7.30 am - 12 noon

Closed Public Holidays