

# COMMUNITY NEWS

No. 963 Ph: 4374 1039 Mo: 0412 669 649 Email: enquiries@cnews1.com.au

Web: cnews1.com.au 18th April 2025

## Mangrove Mountain Union Church Trust INVITATION

**ANZAC WWI Plaque  
dedication service 27th April**

You are invited to a short dedication/ ANZAC service at 10.30am which will follow the Mangrove Districts Christian Church service which commences at 9.30am. Morning tea in the Hall after the dedication service.

The WWI plaque that originally was on the end of the Church has been restored mounted on a sandstone plinth at the end of the Church under its original position.

Please come and join us on the 27th April.

*Ron Collins  
President MMUC Trust*

## Football Season Kickoff

The Mountain District Football Club U11's kicked off the season with a 10 nil victory away followed by a 3-2 victory on the following weekend at



Bloodtree Sports Park.

Also on the first week, the Women's O35's were victorious.

This season the Bloodtree grounds are looking spectacular and the playing surface in top condition.



Left: Plaque as originally mounted on the end of the church;

Above: The restored plaque;

Below: Two hand written honour rolls framed inside the church



"What we have done for ourselves alone dies with us; what we have done for others and the world remains and is immortal."

*Albert Pike*

**STOP!**

Next issue Published  
2nd May 2025

**\*\* DEADLINE \*\***

**\*\* 25th April '25 \*\***

Send adverts & copy by  
email, website or post.  
Email, website, FB or phone  
for enquiries

# Ageing in Rural Areas growing interest in "ALICE"

Dear people,

For many older people in rural areas is an impossible dream. They end up in what many refer to as a 'geriatric zoo' far away from friends and family.

It can become impossible for a partner and friends to visit often or at all. They lose contact with everyone and everything they are familiar with.

Do we actually care!!?

Did you read the article on ALICE in the last community news? Our next meeting will be Thursday 24th April 2025 in the hall in Nurses Road (next to Dr Anandasivam's surgery).

There will be a light supper of soup and sweets at 6pm.

If you are getting older and would like to remain in community for the rest of your life, come. If you care or know an older person come and bring them. If you would like some 'casual paid work' helping seniors to remain safely in the community you also need to be there.

Even if you just care: be there. Everyone is needed.

If you can help with catering and/or set up ring Clara on 02 49988198 or Gaye on 02 43533221 or email barclaygaye@gmail.com. If phone unanswered please leave a message.

C. Jones



# HOP INTO THE SCHOOL HOLIDAY PROGRAM!

Central Coast Council has a massive program of free or affordable events to keep children busy and entertained these Easter school holidays.

The jam-packed program has activities that cater to many interests, including visual arts and craft, games and gaming, environmental, sustainable living, writing and literature, film, dance, swimming, basketball, skateboarding and other sports, family film nights and lots more.

To make it easy for parents and carers to find out what's on and where, we've listed school holiday events at [centralcoast.gov.nsw.au/whats-on](http://centralcoast.gov.nsw.au/whats-on)

Some highlights from the Easter school holiday program:

## What's on at our Leisure Centres

Dive into learn to swim and coaching clinics that builds water confidence and improve skills, or join in the pool inflatable fun at Peninsula Leisure Centre for a splash of excitement. Over at Lake Haven there are basketball programs to help kids stay active, make friends and sharpen their game.

## What's on across our libraries

Escape the ordinary holiday activities, our libraries are offering



**Mountain Medicine**

Providing the local community with a collaborative approach to multidisciplinary healthcare.

### Dr Christine Wade

B.Med (Hons) FRACGP

### Dr Sepali de Silva

MBBS

### Dr Rohan Dissanayake

MBBS

### Dr Anisa Rouhipour

MBBS

### Torin O' Grady

Podiatry (Foot Care)

### Pathology – Douglass Hanly Moir

Mon & Fri 8.30am to 1.30pm

Wednesday 12.00pm to 5:00pm

Ph: 437 41942



**BULK BILLING:** Children under 16, Health Care Card Holders and Pensioners

40 Niclins Rd, Mangrove Mountain NSW 2250  
**ph 4374 1252**

# MANGROVE MOUNTAIN PHARMACY



Monday - Friday: 9am-7pm

Saturday - Sunday: Closed

**Free Shingles Vaccine**  
**Now Available for over 65's**  
**No Booking Required**

- Free webster packing and all your pharmacy needs
- Vaccination
- Household goods and gifts
- Parcel point outlet



3/1 Waratah Road, Mangrove Mountain, NSW 2250

Phone: (02) 4374 1457 Fax: (02) 4374 1479

Email: [mangrovemtpharmacy@gmail.com](mailto:mangrovemtpharmacy@gmail.com)

an incredible mix of hands-on and captivating activities for children aged 3 to 17 years. Take a deep dive into an authentic crime scene, that will challenge you to think like a real detective at the Crime Story program, or burn off some holiday energy with mini arcade games, including the claw game and down the clown.

#### What's on at Gosford Regional Gallery

Put together a Zine, create a Japanese Zen terrarium or draw your favourite Pokemon and Manga characters. Explore printmaking, weaving, finger-knitting or the art of collage.

#### What's on at the theatre

For curious minds wanting to explore the world of theatres we will be bringing the heartwarming performances of The Velveteen Rabbit - a timeless tale of love and imagination - to life. Go behind the scenes with our popular Tails of the Theatre tours and discover the secrets, stories and hidden corners of this creative space.

#### What's happening on Earth Day

Join us to celebrate Earth Day on Tuesday 22 April, by connecting with nature and helping our local environment. We'll be planting trees and enjoying educational workshops, face painting, free sausage sizzle and kids craft activities during the day. This is a free event for the whole community – not just kids!

#### What's on at the outdoor movies

Grab your picnic baskets, rugs



## 20TH MAY 2025 - YOU'RE INVITED....

Mountain Community Children's Centre will be hosting the Biggest Morning Tea on Tuesday 20th May from 7.30am – 12pm.

The community is welcome to come along and join us for our morning tea.

Follow the link to our page to donate:

<https://www.biggestmorningtea.com.au/fundraisers/MountainChildren>

Please share this with your colleagues, friends and family.

and cushions and enjoy a free family friendly outdoor screening of Happy Feet (rated G). Enjoy roving entertainment, circus fun, face painting and lawn games.

There really is something for every interest during the school holiday program - which also showcases the breadth of Council's facilities and community services across the region

Central Coast Council  
Media Release

#### Where your money goes

##### Research

Investment in research has helped increase survival rates from 49% in the 1980s to 71% today.

##### Support

Around 150,000 Australians are diagnosed with cancer each year, meaning there are many families who need practical information and support

##### Prevention

Supporters are helping Australians reduce their cancer risk by funding our world-leading prevention campaigns.

Last year, 25,376 morning tea hosts right across the country raised over \$14.6 million for people impacted by cancer. Every single dollar raised makes such a life-changing difference in funding vital cancer research, prevention programs and support services for cancer patients and their families.

So join me at our Biggest Morning Tea or donate online to help reach our fundraising goal! Together, we can help Cancer Council raise much needed funds that go towards vital cancer research, support services, prevention programs, and advocacy.

Louisa Foxford

Nominated Supervisor

Justice of the Peace (JP)

Mountain Community Children's Centre

Ph: 43741239

[www.mountainchildren.com.au](http://www.mountainchildren.com.au)

## Horse Vet

Somersby - Mangrove & Central Coast area

**Brett Warren**

Mobile: 0428 215 599  
Home: 4374 1640

Email: [brettvet@ozemail.com.au](mailto:brettvet@ozemail.com.au)

[www.centralcoastequine.com.au](http://www.centralcoastequine.com.au)

**Consultations by appointment**

Mobile X-ray, endoscopy, purchase and insurance exams





## Sustainable Natives

(wholesale production nursery)

94 Keighley Avenue, Somersby - Sales by appointment.

**Contact Jonathan Steeds on 0415465162**

**[jonathan@sustainablenatives.com.au](mailto:jonathan@sustainablenatives.com.au)**

**or Olga@[sustainablenatives.com.au](mailto:sustainablenatives.com.au)**

**web: [www.sustainablenatives.com.au](http://www.sustainablenatives.com.au)**

We produce a large range of Australian Natives including local species. We supply retail nurseries, landscapers, bush regeneration projects, developers and local property owners with tubestock to semi advanced plants.

We offer a design (landscape architecture drawings)/consultation service for your property to add more natives to your landscape.

**SOMERSBY**  
ANIMAL HOSPITAL

Dr. Robin Crisman & the SAH veterinary team  
**79-b Howes Road, Somersby**

- A full service, purpose built veterinary hospital.
- Large and small animal consults incl. horse repro.
  - House and farm visits.

**Call us on: 4372 1799**

[www.sahvet.com.au](http://www.sahvet.com.au)  
visit us on Facebook



Customised  
Landscapes &  
Earthworks

Qualified arborist

Roads & Driveways

Bushfire Hazard  
Reduction

Free Quotes - Fully  
insured

**Call Andre on 0478 417 229**

[inthevalleyearthlandscapes@hotmail.com](mailto:inthevalleyearthlandscapes@hotmail.com)

# Fairview News

## Fairview Rocks the Australian Music Scene

Most people know Fairview Homestead as a heritage-listed traditional homestead at Dubbo Gully. It has played a central role in the life of the Mangrove Creek community for over a century and its magnificent setting has inspired award-winning landscape painters of international renown (MMCN, 21 Feb 25).

What is less well known is that Fairview was also the birthplace of a musical phenomenon. After Council compulsorily acquired Fairview in 1973, it leased the property to Chris and Linda Piper. They invited several friends of theirs, including Warren Nunn (a Spencer local), Rex Kelaher and Bruce Atkinson, to live with them at Fairview. At that time, the property was in immaculate condition, having been fully refurbished by Sydney architect Don Crone.

Most of the tenants at Fairview were working as labourers, building the Mangrove Creek weir. After work, the group would fire-up the generator to play music, jamming on the veranda with their electric guitars.



*The Mangrove Boogie Kings at Spencer boat ramp in 1975, picture by Linda Piper*

At some point in 1974, the group decided to start a band and the Mangrove Boogie Kings were born. The band was joined by drummer Denis Bourke and started playing gigs locally, including on the back of Bill Woodbury's flatbed truck at the boat ramp in Spencer (see picture by Linda Piper, 1975). The band also played at the opening of Spencer Community Hall.

It wasn't long before the Mangrove Boogie Kings took the Sydney rock scene by storm and also started touring interstate. Over the next decade, they became one of the hottest support

bands, sharing stages with some of Australia's biggest bands including Cold Chisel, Mental As Anything and also supporting Chuck Berry's Australian tour in 1978.

Their extraordinary story inspired Slim Dusty to write the 1992 tribute song "The Mangrove Boogie Kings" (listen on YouTube or Spotify!). The band reformed several times over the decades as their unique brand of 'swamp rock' has remained popular with fans. The Mangrove Boogie Kings played their farewell show on 8th February 2025 in Leichhardt. Maybe they can be persuaded to give another

### Dr. S. ANANDASIVAM

(ANAND)

**MBBS, FRACGP, AMCC**

For Doctor Appointments:  
Monday - Friday 9am- 5pm

*Laverty Pathology Service  
Available:*

*Monday to Friday 8:00 till 3:30  
Saturday 8:30 till 12*

**Medicare Bulk Billing**

**1639 Nurses Road  
Central Mangrove, 2250  
02 4373 1914**

## UPCOMING CATTLE AUCTIONS

### Maitland Regional Saleyards

- Weekly Monday Liveweight Cattle Sales 9am, followed by Calves, Pigs & Sheep from 12 noon.
- Monthly Store Cattle Sales - May 17

### Gloucester Saleyards

- Fortnightly Thursday Store Cattle Sales - Apr 24

Feedlots - Abattoirs - Paddock to Paddock Sales  
Clearing Sales - Rural Property Sales

Follow us on Facebook or join our e-list on  
[www.bowelidbury.com.au](http://www.bowelidbury.com.au)



**Bowe & Lidbury Pty Ltd**  
**(02) 49 327 066**

farewell performance at Mangrove Mountain Hall when it celebrates its 100th anniversary.

Fairview Homestead and the settlements of Mangrove Creek have played a key role in the history of the Central Coast, as well as inspiring outstanding artists whose work reached far beyond the region.

For the last 22 years, Fairview has been left to decay slowly and mercilessly through neglect — but it is not too late to Save Fairview!

The mission of the Fairview Homestead Association is to work with Council to protect and restore Fairview Homestead, to celebrate the historical and cultural significance of the Mangrove Creek community and to preserve that heritage for future generations.

You can help by supporting our petition to Save Fairview. Please sign our online petition at <https://www.surveymonkey.com/r/SaveFairview>



## FIRE SEASON WRAPS UP

The end of March marked the official end of the 2024-25 fire season for most of New South Wales, with restrictions extended in parts of the state's Central Tablelands and north-west due to ongoing elevated fire risk.

Commissioner of the Rural Fire Service (RFS), Rob Rogers, said this season crews worked on more than 4,100 bush and grass fires, which burnt through more than 61,000 hectares.

"Members have also spent considerable time assisting interstate communities, with crews and aircraft deployed to assist with both fires and floods in Queensland, Victoria, Tasmania, South Australia and Western Australia.

In addition to bush and grass fires, RFS crews responded to more than 2,800 motor vehicle accidents and nearly 700 structure fires.

Despite the season drawing to a close for most of the state, Commissioner Rogers urged residents to remain vigilant, "Grass fuel loads remain a

concern, and fires can occur at any time of the year," he said.

"Fire permits are no longer required for those in areas outside the Bush Fire Danger Period. For those in areas where the Bush Fire Danger Period has been extended, fire permits will still be required.

"No matter the time of year, however, everyone must still notify neighbours and local fire authorities 24 hours before lighting up and this is easy to do via the RFS website.

NSW RFS Media Release



Local  
Qualified and Insured Arborist  
Felling, pruning, deadwooding  
Free Quotes

**Contact Asher**  
**0481 353 982**

[abenvirotrees@gmail.com](mailto:abenvirotrees@gmail.com)

[surveymonkey.com/r/SaveFairview](https://www.surveymonkey.com/r/SaveFairview)  
or scan the QR code.

Dr. Matt Lohmeyer, President  
Fairview Homestead Association Inc.  
[president@fairviewhomestead.com.au](mailto:president@fairviewhomestead.com.au)  
0431 664 550

## MANGROVE PRODUCE AND HARDWARE

1668 Wisemans Ferry Rd, Central Mangrove (just 1km from the Crossroads)

**EASTER AND ANZAC DAY TRADING**  
**CUSTOMERS PLEASE NOTE WE WILL**  
**BE CLOSED FOR THE 4 DAY EASTER**  
**BREAK AND ALSO ANZAC DAY**

**HAVE A SAFE BREAK**



- ◆ Horse Feed
- ◆ Pet Food
- ◆ Bird Seed
- ◆ Vet Supplies
- ◆ Chemicals
- ◆ Fertiliser
- ◆ Timber
- ◆ Hardware
- ◆ Hand Tools
- ◆ Power Tools
- ◆ Paint
- ◆ Plumbing
- ◆ Fencing
- ◆ Electric
- ◆ Fencing

Mon-Fri: 7:30am -5:00pm  
Sat: 8:00am -2:00pm

**Ph: 43731259**

SHOP ONLINE AT  
[www.tuckersstore.com.au](http://www.tuckersstore.com.au)  
or [shop.truevalue.com.au](http://shop.truevalue.com.au)

# Community Voices Matter: Fixing the CCLEP 2022

Even the experts can get it wrong sometimes and, when it comes to the Central Coast Local Environmental Plan 2022 (CCLEP 2022), the mistakes are serious and need urgent attention.

This week, we had the opportunity to meet with four NSW Government Ministers, Penny Sharpe (Environment), Paul Scully (Planning), Ron Hoenig (Local Government), and David Harris (Central Coast). It was great to share our concerns about local environmental and planning issues and I hope our presentations gave the ministers some local "intel" and food for thought.

One of the biggest planning issues we presented was highlighting how the CCLEP is affecting our environment, communities, and quality of life. The C2 and C3 zones that are meant to protect our most valuable natural areas and guide sensible land use are not achieving the intended outcome.

This mess stems from the merger of the former Gosford City Council and Wyong Shire Council. Each had different approaches to land use planning. Unfortunately, the current Central Coast Council chose to adopt the less protective Wyong model when merging the two plans into the CCLEP

2022.

Two out of the four ministers I met with this week, and I won't tell you which ones, didn't seem to think the CCLEP in its current form was that much of a problem. After all, it was signed off by "experts" within the NSW Department of Planning, so it must be right.

Let's be clear: this plan is failing our community. It's failing to protect the lifestyle, liveability, and amenity of residents, particularly those living in C3 zones now exposed to intensive and commercial land uses that other councils don't allow.

It's also failing our environment because over 8,000 hectares of high conservation value land, including Endangered Ecological Communities, old growth forest, wildlife corridors, threatened species, steep slopes, cultural heritage sites and those with aesthetic character are not in the C2 zone when they should be.

This is not just a policy issue; it's about the kind of future we want for our region. At CEN, we're not giving up. We'll keep fighting for a better plan that protects the land, the lifestyle, and the environment we all value so deeply.

We need your support. Stay connected, spread the word, and join us at upcoming community forums and information sessions. Together, we can push for the changes the Central Coast desperately needs.

*Gary Chestnut, Chair, CEN*

# FEDERAL ELECTION AND POSTAL VOTES

Now that the federal election has been announced campaigning is in full swing and so are the promises.

Remember when we were promised by all and sundry that we would get good internet and phone services? There seem to be a few still waiting!

Another issue is postal votes and the application forms being sent out by third parties. The self addressed envelope is addressed to the particular party and not to the Australian Electoral Commission.

The AEC advises "If you decide to use the form sent to you, the party/organisation must forward your form to the AEC for processing. The AEC has no control over what political or other organisations do with the personal information you provide on your application form before they forward it to us.

You can also return the paper form directly to the AEC by:

email [applications@pva.aec.gov.au](mailto:applications@pva.aec.gov.au)  
fax 02 8009 0814

or post:

Australian Electoral Commission  
Reply Paid 9988

[Your capital city] [Your state]

(No stamp is needed if posted in Australia)"

*Editorial*



20 Langford Drive,  
KARIONG

**4340 5154**

**Chiropractic    Massage**  
**Health Coach    Acupuncture**  
**Counsellor    Podiatrist**

HICAPS available  
Medicare EPC & Workers Comp accepted  
After hours appointments available

Like us on social media for  
the latest clinic news




**Caring for Kariong & the  
Mountain District for over 20yrs.**

**MAINLINE  
BATHROOM  
RENOVATIONS**

Lic: L2101

*We supply all licenced, qualified trades required  
to complete your bathroom renovation*

**Steve Karczmarz**  
**0419 999 054**  
[steve@stevembr.com](mailto:steve@stevembr.com)  
[www.mainlinebathroomrenovations.com](http://www.mainlinebathroomrenovations.com)



**29 YEARS  
OF RELIABLE SERVICE**

- Local Painter
- New and Repaint
- Industrial, Commercial and Residential

email: [admin@sunlanddeco.com.au](mailto:admin@sunlanddeco.com.au)  
website: [www.sunlanddeco.com.au](http://www.sunlanddeco.com.au)

**Call Frank: 0411 185 717**



## Mangrove Mountain Country Fair 2025

### CONTEMPORARY ART PRIZE

Our Country Fair will be held on  
Saturday, 18th October.

The theme for this year's  
Contemporary Art Prize is: -

## "KINTSUGI"

Kintsugi, meaning "golden joinery" or "golden repair," is the Japanese art of repairing broken pottery by mending the areas of breakage with urushi lacquer dusted or mixed with powdered gold, silver, or platinum, highlighting the history of the object rather than concealing it.

Kintsugi is more than just a repair technique; it's a philosophy that embraces imperfection and finds beauty in the scars of life.

This category, that is linked to a set theme, sparks great interest each year,



and we are always thrilled with the quality of the entries.

Entries can be any medium and we encourage diversity. Our sculptural entries have been very interesting. I look forward to our first digital or film responses!

We know that there are many local artists producing work of high standard and we encourage all of you to enter this prize to showcase our area!

Entry is free and the winner will receive a cash prize of \$200 in addition to the honour of the award.

Entries from artists over 16 years of

age can be delivered to the Mangrove Mountain Hall on:

- Thursday, 16th October between 3pm and 5pm or
- Friday, 17th October between 8am and no later than 11am

Please include a brief description of your work explaining its link to the theme

Please contact me for further information

Poppe 0400105653

**SMALL GROUP TRAINING IN SOMERSBY**

**ACHIEVE  
YOUR  
BEST  
RESULTS**

**NEW MEMBERS  
\$45 PER WEEK**

**LOCATION**  
6/15 Kangoo Rd  
Somersby NSW 2250

**TIMES**  
5am, 6am or 7am  
Mon, Wed, Fri

**CALL OR SMS (000LS): 0413 111 376**



## Local Solar Power Experts

Living Off Grid  
Has Never Been Easier

Brooklyn Trade Services are your  
local solar electricians, for both  
on and off-grid systems.

Our technicians are certified to  
install state-of-the-art solar and  
battery systems which are great  
for the environment as well as  
your home and or business.

Call us for a chat:

**1300 319 419**

[www.btselectric.com.au/bts-energy](http://www.btselectric.com.au/bts-energy)



# Progress on Major Road Remediation Projects

Natural disaster flooding and storms from 2021-22 created widespread damage to the road pavement and embankments, including landslips and slope instability, at multiple sites across the Central Coast.

There are 155 sites with disaster impacts, which are all pinpointed on the interactive online map, with project status information for each major site.

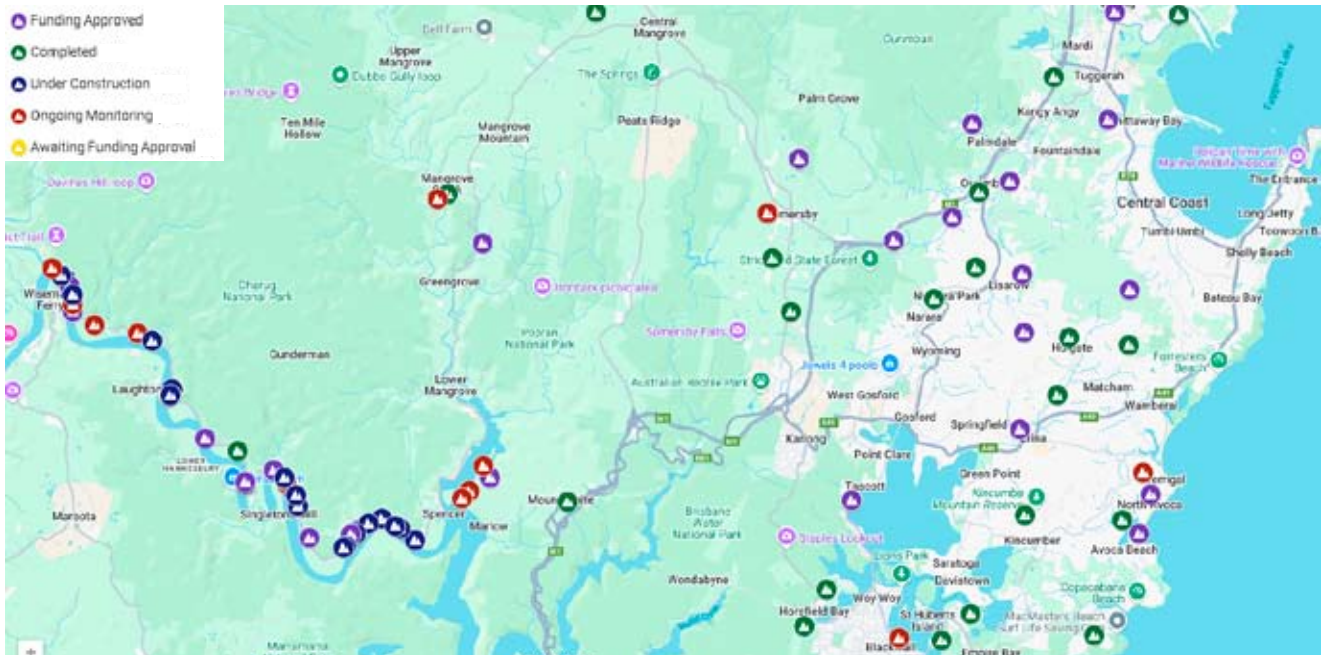
Council has been working closely with the Australian and NSW Governments through Transport of NSW to secure funding as part of the Disaster Recovery Funding Arrangements (DRFA) programs:

- Essential Public Asset Reconstruction Works (EPAR) to restore the road to its pre-disaster function

- Regional Roads and Transport Recovery Program (RRTRP) which includes betterment funding to make the road more resilient to future natural disasters

Since the time of emergency works, council has completed minor and more permanent repair work to multiple roads across the Coast.

For the more complex and extensive repair and remediation works, we have worked with geotechnical and specialist engineers to complete investigation and planning of works.



**HUNTER  
EARTHMOVING  
SERVICES**

*"4th Generation of Earthmoving  
on the Mountain"*

**GENERAL EXCAVATIONS & CLEARING  
DAM & CHANNEL CONSTRUCTION, REPAIR & CLEARING  
PRIVATE ROAD/DRIVEWAY CONSTRUCTION & REPAIR**

- 20 TONNE EXCAVATORS
- 25 & 30 TONNE DUMP TRUCKS
- LONGREACH EXCAVATOR (16m)
- SKIDSTEER & ROLLERS
- 30 TONNE LOW LOADER, TRUCK & DOGS

**ATTACHMENTS:**

**RANGE OF BUCKETS & AUGERS  
GRAB - HAMMERS - RIPPER  
PULVERISER - MULCHING HEAD  
POWERRAKE - SLASHER**

**Wayne Hunter - 0431 761 338  
E [hunterearthmoving@bigpond.com](mailto:hunterearthmoving@bigpond.com)**



*From planning  
to completion  
and much more*

*from a professional  
and experienced  
company.*

**COMPLETE  
SHED  
DEVELOPMENTS**

**COMMERCIAL | RURAL | RESIDENTIAL**

Phone: 02 4312 7613

[info@completesheddevelopments.com.au](mailto:info@completesheddevelopments.com.au)

[www.completesheddevelopments.com.au](http://www.completesheddevelopments.com.au)

**PLANNING • EARTHWORKS • CONCRETE • SHED KITS • INSTALLATION**



**Before**

Landslide at Brush Creek Rd, Cedar Brush Creek

**After**

Initial stages of these permanent works have already commenced at some sites including Wisemans Ferry Road.

Embankment stabilisation works have been completed on a section of Brush Creek Road that was impacted by a landslide during and it's now reopened to traffic.

Works included

- Stabilising the embankment
- Road pavement repairs
- Installing new guard rails and guide posts to keep motorists safe

Please note A 20-tonne load limit and single-lane access remain in place at the bridge over Yorky's Water Gully on Brush Creek Road while bridge replacement works continue. We

**LANGSHAW**  
ELECTRICAL  
PTY LTD

**Timber & Steel power poles  
Pole truck with Auger  
Level 2 electrical & emergency work**

**Call Mark: 0408 002 225**  
Over 100 poles in stock ready to go!

expect these works to wrap up before June 2025.

Extensive slope and road pavements work are progressing across multiple sites on Wisemans Ferry Road (Spencer to Gunderman) in various stages from 2024 to 2026.

*Information from  
Central Coast Council and Google Maps*



Wisemans Ferry Rd - Before roadworks commenced

Underpinning and stabilisation works

Backfill and roadbase

# HEARING LOSS??

**FREE HEARING TEST AND  
HEARING AID TRIAL**

AVAILABLE IF YOU ARE ABOVE 50 YEARS



Micro-Suction, A safe and accurate ear wax removal available.  
Free hearing aids for eligible pensioners and Veterans.



02 43115511

Central Mangrove, Woongarah, Morisset and Wyee

admin@welfasthearing.com.au

welfasthearing.com.au

**Welfast  
Hearing**  
Hearing Wellness Experts



SCAN HERE FOR  
BOOKING

**Home visits  
for customers  
who can't travel.**

★ CENTRAL MANGROVE PUBLIC SCHOOL P&C PRESENTS  
*Mountain Districts Kids'*  
*Neon Nights Disco*

WITH ENTERTAINMENT BY

Bop till you Drop

BOOKING REQUIRED

SCHOOL AGES 5-12\*

\$5 PREPAID ENTRY

OR

\$10 ENTRY + 2 SLICE  
PIZZA DEAL AVAILABLE

MUSIC  
FUN  
DANCING  
GAMES  
FACE PAINTING

For more info and to book:  
Text "**DISCO**" and **your**  
**email** to 0401 623 218

WEAR WHITE OR NEONS TO GLOW!!

17 MAY  
5PM-7PM

MANGROVE MOUNTAIN HALL  
WISEMANS FERRY RD,  
MANGROVE MOUNTAIN

\* PARENTS REQUIRED TO STAY FOR THE DURATION

CUSTOM DESIGN | BUILDINGS | EXTENSIONS | ALTERATIONS | DECKS |   



CONSTRUCTION

0410 100 616 | [kim@kdfconstruction.com.au](mailto:kim@kdfconstruction.com.au) | LIC NO. 267735C

HAIR BY  
GABRIELLE



NOW OPENED

- HAIRCUTS - MEN, WOMEN AND KIDS
- COLOUR
- STYLING

☎ 0419 193 083  
f i HAIR BY GABRIELLE  
✉ [HAIRBY.GABRIELLE0@GMAIL.COM](mailto:HAIRBY.GABRIELLE0@GMAIL.COM)

SCAN QR CODE  
FOR ONLINE  
BOOKINGS

# In memory of Dr Stephen Goodwin



Stephen and his wife Marilyn were former Mangrove Mountain residents and dedicated community campaigners.

The couple joined the Mountain Districts Association and were drawn into the successful fight to keep the Central Coast Mountain Districts coal seam gas free.

Opposing the Mangrove Mountain Landfill, which still threatens the Central Coast water supply, was next.

The issue became an all-consuming passion and was strongly supported by the MDA.

Stephen and Marilyn were passionate about protecting the environment and doing the right thing by the community. As a team their scientific background and innate grasp of political issues were invaluable, and Stephen was an excellent organiser and motivator and worked tirelessly to achieve a just

outcome.

In memory of Stephen, Mountain Districts Association have placed a picnic table displaying a commemorative plaque at the reserve near the Mangrove Mountain Hall.

Dr Stephen Goodwin is immortalised by the investigation and volumes of research he and Marilyn conducted to support the work we do as a community to continue the fight to Save Our Water.

Poppe Zouroudis

## EASTER SERVICES AT THE UNION CHURCH

Conducted by the Mountain Districts Christian Church.

**GOOD FRIDAY** - Join us at 9.30am as we remember Jesus' last days before his death.

**EASTER** - The happy and glorious day of Jesus' resurrection. Come along. Service at 9.30am



**MANGROVE MOUNTAIN**  
MEMORIAL CLUB LTD.

### WHAT'S ON WEEKLY

#### TUESDAY

BINGO from 11am  
\$15 Pizza night

#### WEDNESDAY

MEAT RAFFLE drawn at 730pm  
\$18 schnitzels (kids eat free)

#### THURSDAY

MEMBERS BADGE DRAW 730pm  
\$22 steak night

#### FRIDAY

HAPPY HOUR 4-6pm  
COCKTAIL HOUR 6-7pm  
MEAT RAFFLE drawn at 730pm  
New restaurant specials every week from 530pm

#### SATURDAY

POOL COMP from 630pm  
entry fee \$5

#### SUNDAY

Sunday Roast - available all day  
(kids eat free)



Find Us On Facebook & Instagram - 18 Hallards Road, Central Mangrove, 2250 - 02 4373 1129 - [www.mmmclub.com.au](http://www.mmmclub.com.au)

# HISTORY AFLOAT: KAYAKING POPRAN CREEK

**Saturday May 17**

Kayak the serene waterway of Popran Creek. An immersive tour of Hawkesbury River creeks. All kayaks, gear included + morning tea and lunch.

Explore the incredible Hawkesbury landscape from a comfortable and easy to operate double sea kayak. Join us for a paddle along one of the Hawkesbury

River's most beautiful creeks. Launching from Spencer we paddle with the tide past Holy Trinity Church into the serene waters of Popran Creek. Historical stories unfold through the lost names of Sawmill Flat, Kellys Creek and Kendall island. On the way catch a glimpse of the old school pick-up stop and abandoned wharves where once floating stores and butcher boats delivered to the small community of remote creek-dwellers.

## Highlights

- Morning Tea at Neverfail community settlement
- Historical Storytelling about river tales and mystery
- Launch at the meeting of the Hawkesbury River and Mangrove





**GOLDEN**  
BEAUTY BAR

Beauty,  
Cosmetic Tattooing,  
Eyelash Extensions  
& Makeup

Salon service & Mobile

**0437 016 592**

Instagram: @golden\_beauty\_bar\_au

Creek.

- Explore Popran Creek. BBQ lunch  
Tour led by professional outdoor guide and local historian  
Paddling with the tide. Orientation for those new to kayaking  
Tickets: \$195 plus booking fee

Find out More: <https://www.heritageventures.com.au/kayakpopran2025>

Heritage Ventures  
web: [heritageventures.com.au](http://heritageventures.com.au)  
mobile: +61 447545271



**On The Go Constructions Pty Ltd**  
Specializing in the building of chicken sheds

Charlie Muscat is well known in the Industry, with over 12 years experience and has a reputation for quality workmanship.

- \* New Chicken Sheds \* Tunnel Conversions \* Roofing
- \* Machinery/Farm Sheds/Stables/Lofts/Piggeries \* Coolrooms
- \* All Fabricating services - All frames & trusses are fabricated by On The Go Constructions to Engineer specifications.

Call Charlie on 4374 1114 or 0408 684 719

**VISION FOR LIFE...**  
For all your concrete & pumping services, call Louis on 0418 409 576



**DUAL**  
PROPERTY PROJECTS

**CARPENTRY SERVICES**

- DECKS & PERGOLAS
- PRIVACY SCREENS
- OUTDOOR ENTERTAINMENT AREAS
- HOME IMPROVEMENTS
- SMALL RENOVATIONS & REPAIRS
- RETAINING WALLS & GARDEN BEDS
- FEATURE WALLS & CUSTOM DESIGNS
- ANY FURTHER CARPENTRY NEEDS



**ENQUIRE NOW**

JACOB - 0437 822 778  
MAC - 0400 766 788  
dualpropertyprojects@outlook.com  
[www.dualpropertyprojects.com](http://www.dualpropertyprojects.com)



Follow us  

**LONGRIDGE**  
**CONTRACTING**  
EXCAVATION & TRUCK TIPPER HIRE

- Site Levelling, • Land Clearing, • Horse Arenas,
- Roadways, • Certified Fill Material

**Michael Schembri 0419 236 788**

## Fee-free training

The Diploma of Agribusiness Management, AHC51422, is considered a priority qualification. It is eligible for fee-free training until 1 June 2025 unless all available places are filled prior.

Other fee free courses include HC50122 Diploma of Agriculture, AHC50320 Diploma of Production Horticulture, AHC50422 Diploma of Horticulture Management, AHC51222 Diploma of Community Coordination and Facilitation, AHC51920 Diploma of Applied Agronomy and AHC60319 Advanced Diploma of Agribusiness Management

Check your eligibility via the website <https://www.ruralbiztraining.com.au/> [Course Fees & Subsidies] or contact Rural Biz Training at 02 6884 8812 or email [admin@ruralbiztraining.com.au](mailto:admin@ruralbiztraining.com.au) for more information.

Eligibility criteria includes: being



**OPEN 7 DAYS**

**40 YEARS LOCAL**



General Dentistry | Emergency Care | Cosmetic Dentistry  
Orthodontics & Invisalign | Dental Implants | Oral Surgery  
Sleep Dentistry IV Sedation | Wisdom Teeth Removal  
3D CT Scanning | CEREC same-day ceramic restorations

02 4323 1933 | [www.vcdental.com.au](http://www.vcdental.com.au)

Suite 10, 36-40 Victoria Street, East Gosford NSW 2250

### NEW PATIENTS

- Comprehensive checkup & clean  
Includes up to 5 x-rays  
**No Gap** (with health insurance) or \$290

### OFFERS (all patients)

- Free orthodontic consultation
- Free dental implant consultation
- Free cosmetic makeover consultation
- Sport mouthguards: **No Gap** or \$99

### FINANCE

- We bulk bill the Medicare CDBS
- Zip Pay & Zip Money payment plans
- We partner with SuperCare

15 years or older, having left school, living or working in NSW, and being an Australian citizen, permanent resident, humanitarian visa holder, or

New Zealand citizen.

Training is subsidised by the NSW Government

*RuralBiz Training*

## Volunteers' Morning Tea - Come Along!

CEN will be holding a Volunteers' Morning Tea on Thursday, 1 May at 11am, in our nursery off Loop Road, Ourimbah Campus of Newcastle University.

Whether you're already volunteering with CEN or you're interested in becoming a volunteer, this morning tea will be a great opportunity to meet our staff and find out all about what we need your help with.

Volunteers at CEN work in our two nurseries, help us with events and with our office work. We are currently seeking assistance in the areas of memberships and donations along with support at some events we have



coming up.

Staff will be on hand at this free morning tea in our beautiful Wildplant Nursery to discuss opportunities and skills needed. So please mark this date

on your calendars and come along.

Community Environment Network

[cen@cen.org.au](mailto:cen@cen.org.au)

4349 4756

PO Box 149 Ourimbah NSW 2258

**COASTAL TRUCK LICENCES**

LR to HC Licences

**Paul Viola: 0481 409 309**

ABN: 36 659 041 880

[info@coastaltrucklicences.com.au](mailto:info@coastaltrucklicences.com.au)

Coastal Truck Licences

**ALL ASPECTS OF TREE WORK**

**TIJANO TREE CO.**

- Truck & Chipper
- Cherry Picker
- Excavator
- Forestry Mower

Local Arborist, friendly & experienced team. Insured

Tim - 0412 985 422 or [tijanotreeco@gmail.com](mailto:tijanotreeco@gmail.com)



## TAKING THE CONFUSION OUT OF USING SMART PHONES AND TABLETS!

### Are you as confused as the couple below?

There are many features of the smart phones and tablets that are not used because people do not know what they do.



At Digital Connect we are here to help you discover and use these features and have fun doing so.

**Sessions are held on 4th Thursday of the month.**

**NEXT SESSION THURSDAY, APRIL 24, 2025  
9.30am - 11.30am**

Mangrove Mountain Computer Club  
6 Waratah Road, Mangrove Mountain  
Enquiries - Suzanne 0412 298 126

**DIGITAL CONNECT - Free workshops** for over 50's to develop skills and knowledge in the digital world.

## ARTS NEWS



### What's on at the Old Fireshed Gallery

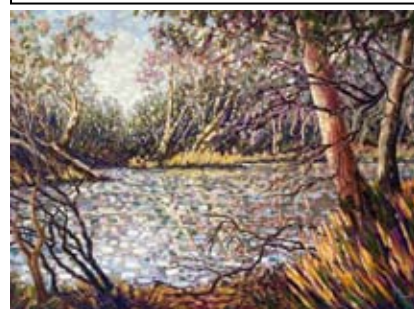
Our next exhibition...

**'PAINTINGS & MOSAICS'**

Marilyn Miller, Kaye Lovie, Carole McDonald, Julie Eller, Mary Francis  
25th April - 4th May, 10am - 4pm



*"Spoonbills feeding - On Millfield Wetlands" - Marilyn Miller*



*'Flooded Gums, Coonamble NSW' Kaye Lovie, winner of Singleton Art Prize 2024*

## BLISS EARTHWORX

- Excavator with Buckets, Hammer, Auger & grabs.
- Posi track with 4in1 bucket, forks & spreader bar
- Tipper 6 ton
- Posi track slashing

### Excavation - Concrete - Landscape

Facebook, Instagram  
Email: blissearthworx@gmail.com

▲ Based in Somersby ▲

**0409 456 003**

## thinkwater. CENTRAL COAST

AGRICULTURE • COMMERCIAL • RURAL • INDUSTRIAL

Australia's Leading Water Solutions Network

- ◆ Water Treatment
- ◆ Pump Systems
- ◆ Irrigation Systems
- ◆ Fertigation
- ◆ Mowers & Ride-Ons
- ◆ Pipes & Fittings
- ◆ Fire Protection Systems
- ◆ Chainsaws & Generators
- ◆ Water Tanks
- ◆ Repairs

**Ph 4373 1466**  
780 Peats Ridge Road, Peats Ridge

[www.thinkwatercentralcoast.com.au](http://www.thinkwatercentralcoast.com.au)

## Land Surveyors

Surveying the mountain and districts for 100 years.  
Detail, Boundary, Identification, Construction and Volumetric Surveys, Subdivisions and more.

For a free quotation call us on 02 4324 2566  
or email us at [admin@bannisterhunter.com.au](mailto:admin@bannisterhunter.com.au)

**BANNISTER  
& HUNTER**

**100** years  
Surveying the  
Coast since 1924



#### OUR SERVICES INCLUDE:

Custom built homes • Granny flats  
Extensions • Carpentry services  
Renovations • Decks & Pergolas  
Waterproofing & Bathroom  
renovations  
Disabled modifications  
Asbestos removal  
Building maintenance

**Dane Meredith | Builder**

0420906499

dane@ebhbuilding.com.au

#### WVAC Committee Members 2025

- President - Leeanne King
- Vice - President - Fiona Bateman
- Treasurer - Jan Bowmaker
- Bookings Secretary - Chantal Mahoney
- Minutes Secretary - Mandy Davies
- Public Officer - Jan Bowmaker
- Maintenance - Campbell Murray
- LYG Roster & maintenance - Kerry Racó
- Publicity - Jenny McDonough
- Committee members - Michael O'Sullivan, Claude Aliotti

Wollombi Valley Arts Council Inc

Web: [www.wollombi.org](http://www.wollombi.org)

# HOLY TRINITY CATHOLIC CHURCH

COME AND JOIN  
US TO WORSHIP  
AT OUR  
BEAUTIFUL  
CHURCH

LOCATED ON WISEMANS  
FERRY ROAD  
3 MINUTES NORTH OF  
SPENCER VILLAGE

Spencer



Next Mass is the 10th May, 4pm

WE GATHER ON THE 2ND  
SATURDAY OF THE MONTH FOR  
MASS AT 4PM

We would love the opportunity to meet you and  
welcome you to our community.  
Arrive earlier and enjoy a picnic under a shady  
tree in our beautiful grounds.



4350 WISEMANS FERRY RD, SPENCER



JOIN US ON FACEBOOK FOR THE LATEST INFORMATION



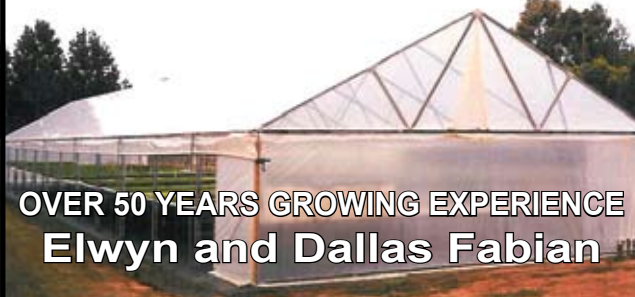
ANNE 0412201851, PETER 0407971340



## FABIAN FARM

Cell Grown Seedlings

"OUR SEEDLINGS ARE SECOND TO NONE  
THERE IS NO SECOND CHOICE"



OVER 50 YEARS GROWING EXPERIENCE  
Elwyn and Dallas Fabian

Office: 02 4374 1281

Fax: 02 4374 1011

Elwyn: 0418 432 477

Dallas: 0417 285 047

191 Waratah Road, Mangrove Mountain, 2250

## OUTLAND Mechanical & Maintenance Service

Licence No. MVRL54125

ABN 14814837840



### Mobile Diesel Mechanic

- Specialising in Small Fleet Diesel Service
- Tractors • Farm Machinery • Mowers
- Earthmoving Machinery
- Welding

John: 0427 660 752 [jlhellyer67@gmail.com](mailto:jlhellyer67@gmail.com)



## JEREMY AOUN

PLUMBER | GAS FITTER | ROOFER

OVER 30 YEARS EXPERIENCE  
ALL YOUR RURAL PLUMBING NEEDS

Mobile: 0424 894 225

Licence: 134701C

Email: [aussieplumbing1@gmail.com](mailto:aussieplumbing1@gmail.com)

## REGULAR ACTIVITIES & MEETINGS

### RURAL FIRE SERVICES

Bucketty RFS	Weekend Training Station Maintenance General Meeting	3rd Sat, 9am-12 pm, breakfast 8.30am Every Thurs as required, generally 10am-1pm 3rd Sat in even months, at 1pm, All welcome bucketty@lowerhunterffrfs.com.au 4998 8130
Calga-Mt. White RFS	General meeting Training Information & updates Contact	3rd Mon of the month, 7.30pm all welcome Every Monday 6.30 except public holidays Facebook.com/calga/mtwhiteruralfirebrigade/ Captain.calgamtwhite@ccrfs.org.au - Zack Winslade.
Kulnura VBFB at Greta Rd Station	General meeting Training	1st Wednesday of the month, 7.30pm 3rd Wednesday of the month 7.00pm
Mangrove Mountain RFS Bloodtree Rd	General Meeting Training / Maintenance	Last Wednesday of the month, 7 pm, All Wednesday's except last of month, 7 pm
Spencer RFS	General Meeting Training Maintenance	2nd Monday of the month Meeting 6.30pm 3rd Monday 6:30pm 4th Monday 6:30pm E: captain-Spencer-vol@rfs.nsw.gov.au 0415 668953. 4778 Wisemans Ferry Rd
Somersby RFS	General Meeting Training/Maintenance	First Wed of the month 7.30pm at the Station Every Wed night 7.30 at the Station (except before Wed general meeting)
Yarramalong RFS		Information: <a href="http://www.facebook.com/YarramalongRuralFireBrigade/">www.facebook.com/ YarramalongRuralFireBrigade/</a> Phone contact: 0494 344 030 Email: volunteer@yarramalongrfs.org.au

### COMMUNITY & SOCIAL

Central Coast Plateau Chamber of Commerce	First Tuesday each month 7.00PM MMMC
Coastlink Friendship Group	Wed 9.30am-2pm at the Health Centre, Nurses Rd, Central Mangrove
Country Women's Association (Somersby)	Second Wed of each month, at Somersby Hall Wiseman's Ferry Road, Somersby, contact Sue, 43721280 or 0407768000.
Country Women's Association (Peats Ridge & District)	Third Monday of the month at Community Hall, Peats Ridge School. Any enquiries please contact Christine 0419 400163.
Country Women's Association (Mangrove Mountain Evening Branch)	2nd & 4th Tues of the month, 4-8pm at Mangrove Mtn Union Church, 2154 Wisemans Ferry Rd, MMtn. General meeting 6pm 2nd Tues. Ph Judy 43771728
Gosford North Inner Wheel club	2nd Wed each month 11am at Phillip House in Kariong. Contact: Glenis Ph: 0400 486 760
Kulnura & District Garden Club	Second Monday, 9.30 for 10am start. Jacqui Maxwell 0455364262 kulnuradgc@gmail.com
Kulnura Tuesday Tennis	Tue 9.30am-12.30pm, Kulnura Tennis Courts. Enquiries: Alison Palmer 0427731548.
Ladies of the Valley Afternoon Tea	1st Tues, 1pm to 2.30 at Angels Sussurri Cafe Yarramalong. Margaret Dale 0411104770
Mangrove Singers	1st & 3rd Tue, 6.00 7.30pm at Mangrove Golf Club, enquiries - Kim 0401516501
Mangrove Mountain & Districts Community Group	1st Thurs of the Month, excl Jan. 7.30pm, Mangrove Mtn Hall.
Mangrove Emergency Planning & Communications Committee	Contact: mepeccinc@gmail.com, 0412669649
Mangrove Mountain Country Fair Committee Meeting	3rd Thu of mth except Jan, 7pm, at The Hub of Mangrove Mtn. Pres- Shane 0417 436 529
Mountain Districts Association (MDA)	<a href="http://www.mountaindistrictsassociation.com.au">www.mountaindistrictsassociation.com.au</a> secretary@mountaindistrictsassociation.com.au
Mountain District Football Club Meeting	Second Tuesday of the Month 6.30pm at the Mangrove Memorial Club
Probus - West Gosford	2nd Thu. Ph Elaine Burrows 0412988353
River Cares for the Lower Hawkesbury River District	President Marlee Maxwell Email rivercaresinc@gmail.com
Rotary Club Meeting	Friday 7.15am at Phillip House. 43404529
Spencer Community Progress Group Inc	President Brad Maissey, Community Meetings, 0436482201, spencercpg2@gmail.com
Spencer Community Ladies Social Club	Last Fri of month. 12.00 noon Spencer Community Centre, Jennifer Dayes 4377 1364 Articles to: spencercpg2@gmail.com
Newsletter	Tues & Sat, 9am-5pm. Contact: Alan Hunt 4566 4626 or Adrian Acheson 0448 833 781
Wisemans Ferry Community Men's Shed	

### SPIRITUAL

Anglican Service - Mountain Districts	Every Sun 8am at Peats Ridge Scout Hall, Sunday School during school terms
Mangrove Mountain Union Church Trust	Committee Meeting 3rd Monday, 7.30pm at the Mangrove Mountain Union Church Hall
Mangrove Mountain Christian Service	9.30am second and fourth Sundays. Mangrove Mountain Union Church
St Barnabas Christian Service Yarramalong	Every Sunday, 9.30am. (Easter & (Christmas Carols dates to be advised)

(cont'd next page)

## LIVESTOCK MARKET REPORT



### Maitland Liveweight Cattle Sale 7th April 2025

600 cattle yarded today at Maitland.  
550 trade cattle and 50 export.

Trade job as firm. Export job was  
dearer.

- Restocker steers up to 250kg made 350c/kg to 430c/kg
- 250kg-300kg made 370c/kg to 435c/kg
- 300kg to 380kg made 330c/kg to 415c/kg
- Restocker Heifers up to 250kg made 270c/kg to 340c/kg
- 250kg-300kg made 280c/kg to 332c/kg
- 300kg-380kg made 260c/kg to 335c/kg
- Butcher Vealers made 330c/kg to 400c/kg
- Yearling Steers to Feed made 320c/kg to 410c/kg
- Yearling Heifers to Feed made 260c/kg to 340c/kg
- Butcher Vealers made 340c/kg to 410c/kg
- Cows Made 140c/kg to 308c/kg
- Bulls made 260c/kg to 300c/kg

### Maitland Liveweight Cattle Sale 31st March 2025

215 cattle yarded today at Maitland.  
165 Trade/yearling cattle and 50  
export.

Trade job was firm to 20c stronger  
in places. Export job firm to dearer for  
secondary cows.

- Restocker steers up to 250kg made 370c/kg to 410c/kg
- 250kg-300kg made 370c/kg to 420c/kg
- 300kg to 380kg made 330c/kg to 410c/kg

- Restocker Heifers up to 250kg made 270c/kg to 325c/kg
- 250kg-300kg made 280c/kg to 340c/kg
- 300kg-380kg made 260c/kg to 355c/kg
- Yearling Steers to Feed made 320c/kg to 380c/kg
- Yearling Heifers to Feed made 260c/kg to 355c/kg
- Butcher Vealers made 340c/kg to 410c/kg
- Cows Made 200c/kg to 290c/kg
- Bulls made 200c/kg to 240c/kg

A friendly reminder that we are often in the area seeing clients and looking at their livestock and if you would like us to call in be sure to give us a call.

Like and share our Facebook page!  
Keep up to date with [bowelidbury.com.au](http://www.bowelidbury.com.au)

*Michael Easy & Rodney McDonald  
Bowe & Lidbury  
52 Kyle Street, Rutherford NSW 2320  
P: 02 4932 7066*

**..:KSR:..**  
  
**NEW  
GRAVEL  
ROADBASE  
\$50/T  
DELIVERED**

**0411 868 437**

## REGULAR ACTIVITIES & MEETINGS (cont'd)

Catholic Service - Central Mangrove

- Spencer

- Wollombi

- Yarramalong

Divine Retreat Centre

Serbian Orthodox

Kariong Community Baptist Church

Restitution Ministries  
Independent SDA Church

### YOUTH

Junior Girl Guides 5-10

Girl Guides 10-15

Scouts, Cubs & Venturers  
Peats Ridge Scout Hall

### HISTORICAL

Brisbane Waters Historical Society

Dharug & Lower Hawkesbury  
Historical Society Inc.

First Fleeters Central Coast Chapter

The Pearl Beach Aboriginal History Group

Wyong District Museum &  
Historical Society

### ACTIVITY/HOBBY

Coastal Communicators Toastmasters

Craft/scrapbooking

Saturday Craft Group/Spining  
and bobbin lace

Yarn group (knit, crochet etc)

### HALL BOOKINGS

Kulnura Hall

Mangrove Mountain Hall

Mangrove Mountain Union Church & Hall

Somersby Hall and Mountain Districts  
Culture and Heritage Centre

Yarramalong school of Arts / Hall

Saturdays 5pm St. Dionysios Greek Orthodox  
Church, 21 Nurses Rd, Central Mangrove,  
Contact Nai Hereford 0405 558 669

Holy Trinity Church, 2nd Sat of the month  
4pm, Contact 0412 201 851 as times may  
change each month.

2nd & 5th Sunday of the month, 4.30pm Mass  
at St Michael the Archangel, Wollombi.

1st Sunday each month, 11.15am St. Barnabas  
All welcome. Enq 0428 438577

Daily Holy Mass 8.00am to 8.30 am  
Last Sun, 9am-4pm, One Day Retreat.

160 Hensons Road, Somersby Ph 0243721598

2nd & 4th Sun. of the month. 10 am, followed  
by luncheon, tea, coffee, cakes (cost \$20).

1184 Peats Ridge Rd, Peats Ridge

Sun @9.30am, Church & Kid's Program,  
Philip House, Mt Penang Gardens, Chris  
Clarke email [pastorkcbc@outlook.com](mailto:pastorkcbc@outlook.com)

10am every Saturday, Mangrove Mountain  
Union Church.

Kooree Guide Cabin, 5.00pm - 6.30pm

Mondays in school term,

Kooree Guide Cabin, 6.00pm-7.30pm

Mondays in school term, Contact 0417451764  
for further information

Cubs meet 6.30pm - 8.30pm Wednesdays

Scouts meet 7.00pm - 9.00pm Tuesdays

Venturers meet 7.00pm - 9.00pm Mondays  
Contact 0460 696 941

25-27 Henry Kendall St., West Gosford, Ph:  
4325 2270. [www.henrykendallcottage.org.au](http://www.henrykendallcottage.org.au)

Last Sat of month. All welcome, contact Jan  
Kofron 0405321478 [jankofron@optusnet.com.au](mailto:jankofron@optusnet.com.au)

2nd Sat of the month, 10.00am for 10.30,  
Point Clare Hall (except Jan & Dec). Contact  
Margaret 0409467710 or Gavin 43404435.

3rd Fri of month 7.30pm Pearl Beach. Peggy  
0411754577 [pbaboriginalhistory@gmail.com](mailto:pbaboriginalhistory@gmail.com)

Open Sun to Thurs, 10am-2pm, other times  
by appt. Contact 43521886 email [info@alisonhomestead.com.au](mailto:info@alisonhomestead.com.au)  
website: [www.alisonhomestead.com.au](http://www.alisonhomestead.com.au)

1st & 3rd Thurs of month, 6:45pm to 8:45pm  
at Doyalson-Wyee RSL. Debbie 0421216952

Yarramalong Hall 10am to 5pm, \$12/person.  
Bring along your projects. Dates & details:  
[stackm@skymesh.com.au](mailto:stackm@skymesh.com.au) or ph 43561196

2nd Sat of the month Somersby Hall (10am to  
2pm) cost \$5 per person Carmen 0434071305

Last Sunday of month 2pm at Angels Sussurri  
Cafe Yarramalong. Contact Margaret Dale  
0411104770

Contact Central Coast Council.

Hall bookings Ryan Howard 0405416289

Church & Hall bookings 0412669649

[mmucsecretary@outlook.com](mailto:mmucsecretary@outlook.com)

Hall bookings: 0413 359 655

or AH 4373 1488

[enquiries@yarramalonghall.org.au](mailto:enquiries@yarramalonghall.org.au)

<https://yarramalonghall.org.au>

**MDS**  
MOUNTAIN DEVELOPMENT  
SOLUTIONS

## SCREW PILING

**RURAL: TRACK LOADER & EXCAVATOR HIRE**  
ROAD & DRAINAGE REPAIRS  
ROCK & BLOCK RETAINING WALL  
SUPPLIED & BUILT

**0417 479 525**

John White

## CNS Electrical

Lic No. 214132C

Your local Electrical Contractors  
on the mountain, specialising in  
Rural, Domestic, Commercial and  
Industrial works, including:

Excavation, Trenching, Mains & Sub-mains,  
Voltage Calculations & Future Planning.

**Call Cameron for a quote on: 0438 695 600**

Office: 0480 467 894

Email: [admin@cnsselectrical.com.au](mailto:admin@cnsselectrical.com.au)



# Bucketty D.A. Part 2

To the Bucketty community, residents and friends I would like to share my heartfelt sincere thanks for your wonderful support for the Bucketty's Brewery DA, submitted and passed by the Cessnock City Council on Wednesday 19th March.

It has come at the end of a 5yr struggle to get the DA finally approved, with conditions that are yet to be disclosed.

To complete the DA, many reports were needed and submitted to the appropriate authorities for review including: Environmental & Conservation, Water, Ecology & Wildlife Habitat, Police, Traffic, Bushfire, Social Impact and others.

Many of the reports needed to be resubmitted several times to get all the facts clarified, and after all due diligence was completed I am happy to report that because all the criteria was met, all the boxes were ticked so the Mayor and 9 of the 12 councillors present carried the motion approved.

To the residents that were in opposition to this DA, there is not a lot that I can say to you, I respect your right to have your options and points of views, but under the governing systems that this country has been built on, our democratic system was applied with the outcome of the majority of the votes winning.

I would hope that over time these residents who were in opposition to this development, hopefully will see the many benefits for the larger and overall community of Bucketty and other nearby communities that this development brings.

Congratulations to Nick & Alexi McDonald for staying strong and fighting for the right to have their dream become a reality.

Into the future, locals, visitors & tourist will be glad for the opportunity to come to Bucketty's, take a break, have something to eat, enjoy a cold Bucketty's beer or a glass of wine, the bush environment they are in, then just relax and enjoy being in "A Bucketty's Bucketty's State of Mind"

Roger Danne OMB

## FOR SALE

GALE'S CITRUS - Bagged Citrus trees in various sizes available ph. 4372 1408 or mobile 0421 196 631

WATER LICENCE Kulnura Mangrove Mountain Ground water source 30 Megs, open to offers, call 0407761375

PLASTIC CRATES - Perfect for Growing crops or used as Benches. Lots of other uses, large quantity available. Stackable, 60cm x 40cm. From \$1.00. Ph 0408 432 999

FIREWOOD \$150/bin phone 0419412993

HAY FOR SALE Lucerne, Oaten, Wheaten, Rye, Rhodes. Big & Small bales, for Horses & Cattle. Call Mitch 0411562782

DORPER EWE Old pet, free. White turkeys, 6mths old \$40 ono 43741255

CHICKEN FARM EQUIPMENT including Atlas Copco 125KVA generator, biobin, plastic scratch trays, feeders, silos, brooders, fans, foggers, gas tanks, pumps etc. Phone Jim 0414 777 748

FIREWOOD FOR SALE & SLASHING. Ph David Starkey 0497808759

LARGE GENERATOR for SALE. Genuine HONDA GX340 Motor, large 6.8 KVA Mecalte Generator. Comes in extra heavy-duty roll-cage and on heavy duty trolley. Also has 15 AMP Lead. Basically, As New condition. New price is around \$2000, we will sell for \$1400. ph. 43761146 ( Mick )



**Antennas - Digital**  
Hayward Video & Antenna Service  
**VAST Satellite Service**  
"Government approved installer"

**Ray Hayward**  
mob: **0412 685 555**  
email: [Ray.Hayward@gmail.com](mailto:Ray.Hayward@gmail.com)

**The Grass Cutters**

- Slashing
- Rock picking
- Farm cleaning and clearing
- Cultivation and more
- Obligation-free quotes

Call **0419 412 993**  
Email [pat@thegrasscuttersrus.com](mailto:pat@thegrasscuttersrus.com)  
**See us in action at: [thegrasscuttersrus.com](http://thegrasscuttersrus.com)**





**Bikes n Motors**

**Motor Vehicle Repairer**  
**Service & Repairs**

**Motorcycles ★ Light Vehicles**  
**Cars ★ ATVs ★ Buggies ★ Quads**

**Call & Book Now**  
**PH: 0491 622 080**

1154 George Downes Drive,  
Kulnura, NSW, 2250.  
★ Behind Jerrys' Cafe ★  
[bnm@bikesnmotors.com.au](mailto:bnm@bikesnmotors.com.au)  
[www.bikesnmotors.com.au](http://www.bikesnmotors.com.au)

**PINK & BLUE SLIPS**  
Licence No:  
**MVRL56584**

## CLASSIFIED ADVERTISEMENTS

These columns will be set aside each issue for residents to advertise inexpensively and effectively in their own local paper. If you have anything you wish to sell, buy, swap, etc., ring 4374 1039 or 0412 669 649 during office hours. Rates start at \$4.00.

### WANTED

OLD BATTERIES, will pickup, phone 0413 975 107

### FOR RENT / LEASE

FOR RENT - 3 BR COTTAGE in Yarramalong Ph 0428594629 (no text please)

HOUSE FOR RENT in Peats Ridge. 4 bedroom, 2 bathroom, 3 car garage plus carport. Available after May 5th. Enquiries - Sue 0400436573

### AGISTMENT

HORSE AGISTMENT AVAILABLE. Full care. Group and individual paddocks with shelters. Full size sand dressage arena, grass jumping arena. Located walking distance to Peats Ridge Village and Café. Call Cameron on 0438695600

### POSITIONS AVAILABLE

SEMI TIPPER DRIVER Wanted. Full time. Mainly quarry work. MUST have Manual Roadranger or Mack 18sp experience and Tipper experience. Travelling between Newcastle, Central Coast, Sydney. Immediate start to right applicant. Ph 0417 285 047

### SERVICES AVAILABLE

AIRCONDITIONING, BUILDING, CARPENTRY - Local service, 14yrs experience in aircon, 22yrs experience in building & carpentry. Call Ken 0412 842 920

### SERVICES AVAILABLE

DOG SITTING/WALKING. Honest & reliable. Call 0438506837

BRICKLAYING & Render repairs. Adrian 0408347737. Lic 98665C

TOWN 'N COUNTRY FLOOR SANDING & POLISHING New & old floor boards, parquet, verandahs, stairs, walls ceilings, re-coating, staining & painting ect..free quote ph Stuart 0400076261 in services available.

MISTY MOUNTAIN RURAL CONTRACTORS - Earthworks, Irrigation, all services available Ph 43530990 or 0418221495

### ALL TERRAIN SLASHING

Track mounted slashers/mulcher and excavator mounted flail mower. Sloping land, fire breaks, hazard reduction of low vegetation, (lantana, etc) fence line clearing, broad acre slashing. Free quotes. Bliss Earthworx 0409456003

### HORSE BURIALS

Specialising in the on-site burial of your precious horse. Ph Craig 0411 2888 12

ROOF AND GUTTER CLEANING, call Alan on 0427606303. Call for a free quote

METAL PATIOS, INSULATED ROOFS & Carport Builder. Custom made awnings, Decks, Carports & Sunrooms 0420906499

LAURIE DOUGLASS PLUMBING Plumber, Drainer, Gasfitter, Roofer - Ph 4373 1257 Mob 0407 008 488

OOST Painting Contractors - Lic 71725C  
Quality & cleanliness assured.  
For a free quote call David 4356 1449 or 0417 234 094. Yarramalong Local

**PEST CONTROL - Servicing the local area. A.T.S. Pest Control Services Phone Tony 4373 1157 Mob: 0427 731 157**

HORSE RUG REPAIRS - reliable prompt service. Pick-up & drop-off available for large quantities. Ph 0405 620 394

CERAMIC CLASSES & OPEN CERAMIC STUDIO (By appointment-Ph: 0411870090)

JOIN me in an unforgettable journey with clay & artistic exploration!! Reserve your spot today SIMPLY BOOK on foxeystudio.com or email me foxeystudio@gmail.com

LEVEL 2 QHHT Practitioner, Soul Speak Practitioner and Holistic Household Cleansing Consultant. For further info call Sharyn on 0408 967 507, email to shazzaunitt@protonmail.com or visit www.soul-speak-healing.com

KELLY'S KLEANING SERVICE. Cleaning the mountain & the coast. Call Kelly on 0420541196

**SMALL ACRE MOWING  
Excavation, Environmental  
Remediation 0412 228 718**

RURAL FENCING - Post & rail, wire stock, chainwire, colourbond, paling etc. Also Landclearing. Phone Rick 4373 1117

### ALL COVERS & CANVAS WORK!

Boats, Vehicles & Horse floats re-trimmed, cover & horse rug repairs, no job too small! Servicing the mountains & the valleys. Call Alan on 0414 993 669 or Louise on 0410 646 200. located at Yarramalong Road Wyong Creek.

# WATER BORES

**Local drilling company  
based at Ourimbah**

**Contact: Paul Slade**

**Ph/Txt: 0408 471247**

**email:**

**Sladedrill@bigpond.com**

## Your LOCAL GUY for Communications and Security

### BEFORE YOU ORDER STARLINK:

ONE MONTH FREE SAVE \$139.00.

Use the QR Code below.



### STARLINK:

1. Download the Starlink App and do the scan. 2. Call me.

### Multiple buildings:

WiFi link to multiple buildings, sheds etc, call for info.

### VAST Satellite TV:

We supply and also install

Master Security License:  
101264  
Open Cablers License:  
55883  
Insured PI & PL.  
Over 30 years In business.  
Techniport Pty Ltd T/A

## CLOUD SECURITY

Call WARREN 0407 366 444



Contractors Licence No: 367849C



## **WATERMAN EXCAVATIONS**

**PH: 0438 617 851**

Mulching - Horse Arenas - Certified Fill

Sands - Soils - Mulches - Woodchips  
Gravels - Pebbles - Rotomill

Excavators - Tippers - Grader - Dozer - Pozi Track - 6x6 Dump Truck

## **CROSSROADS AUTOMOTIVES**



Terry Kyriacou

Mon - Fri: 7:30am - 5:00pm

Saturday: 7:30am - 12:00pm

SPARE PARTS

LOG BOOK SERVICES

MECHANICAL REPAIRS

**Ph: 4373 1774**



Cnr of Wisemans Ferry Rd. & George Downes Drive, Central Mangrove

**AUTHORISED INSPECTION STATION (INCL LPG)**

## **WARD Septics and Water Tank Cleaning**

- \* Large and Small Vac trucks
- \* Licenced plumber and drainer

**Call Paul 0438315514**

 **SepticCleaning.com.au**



- AGRICULTURE • INDUSTRIAL • DOMESTIC

Licence No - 269888C

**\*24 HOUR EMERGENCY CALLOUT SERVICE\***

**Ph: 4322 3333**

**Fax: 43223433**

Email: [sales@girrigation.com.au](mailto:sales@girrigation.com.au)

Web: [www.girrigation.com.au](http://www.girrigation.com.au)

Unit 2 254 Manns Road, West Gosford NSW 2250



## **K&T PROPERTY CONSULTANTS PTY LTD**

Real Estate Valuers & Land Economists

### **ROBERT MEGGS FAPI CPV**

*providing independent property valuation advice, including:-*

- Stamp Duty, CGT, GST & Retrospective Valuations
- Probate & Estate Valuations • Insurance Valuations
- Valuations for Family Law • Pre-Sale/Auction Advice
- Land Value & Compulsory Acquisition Valuations

500 Kyola Road  
KULNURA NSW 2250

Telephone (02) 4376 1451

Mobile 0429 44 33 10

Email: [ktpropty@ozemail.com.au](mailto:ktpropty@ozemail.com.au)

## **Misty Mountain**

Rural Property

Development Services



- agricultural consultants
- pasture improvement
- fertilizer spreading
- weed spraying
- all tractor work 4/2WD
- soil conditioning
- irrigation install/design
- fencing & stables
- crop planning & planting & all excavations
- concrete slabs Lic. R94321
- property evaluation & planning & management
- fork lift hire

Ex-Dept. Agriculture Officer with 45 years  
experience in the local district.

Greg Koutoulas is the man to call on 0418 221 495



## **Stop Water Shop**

Authorised Dealer

**ONGA, DAVEY and  
GRUNDFOS PUMPS**



## **K. W. & M. E. WEST Pty. Ltd.**

1650 Wisemans Ferry Road,

Central Mangrove

Phone 4373 1164 Fax 4373 1049

## **PUMP REPAIRS AND SERVICE**

### **Trading Hours**

Mon - Fri

7.30 am - 5 pm

Sat 7.30 am - 12 noon

Closed Public Holidays