

# COMMUNITY NEWS

No. 960 Ph: 4374 1039 Mo: 0412 669 649 Email: enquiries@cnews1.com.au Web: cnews1.com.au 7th March 2025



Mangrove Mountain & Districts Country Fair committee would like to invite you to our next meeting on Thursday 20th March 2025 at 7pm at The Union Church Hall.

We are beginning to plan the 2025 Country Fair and are looking for volunteers to assist with many roles. Some roles are as assisting with setting up parking, attending meetings and offering suggestions or helping out on Community Stalls. Everyone is welcome and we look forward to meeting you new and old members of the Mountain Community.

Signage and Food Co-ordinators.  
We are currently seeking 2 volunteers to liaise with the management committee to assist with signage and the food for the day. If you would like further information or you feel you would have some time to spare to assist with either of these roles please send an email to Secretary-MMCF@hotmail.com and we will be only happy to provide further details.

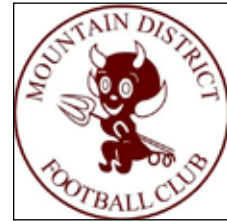
Thank you for your time and we look forward to seeing you all at our next meeting. All welcome!

Kind regards

Louisa Foxford  
Secretary

Mangrove Mountain &  
Districts Country Fair

[www.mangrovemountaincountryfair.org.au](http://www.mangrovemountaincountryfair.org.au)



## MDFC Call For Players

We have a couple of teams that we are urgently chasing players for and WE NEED YOUR HELP!! We have until the end of next week [7th March] to get these teams over the line before the cut off for team nominations...

U14D - we currently have a fantastic coach and 9 very keen kids aged 12-14 and need another 4-5 players to be able to nominate the team. We are re-opening our early bird offer for this age group in the hope that it might entice a few players to sign up. Was \$250 now \$150... save \$100!! Tell your friends, neighbours, cousins, schoolmates!!

Womens All Age - we currently have 23-24 players and need another 4 to get a second team over the line!! It is a fantastic group of ladies that enjoy their football and a laugh or two along the way.

If you are interested in either of the above teams, please contact the club by calling Tom 0478 786 180 or head to [ccf.mycompapp.com](http://ccf.mycompapp.com) to register.

Thomas Seddon 27/02/2025



## AGEING, SOCIAL SUPPORT & REMAINING IN THE COMMUNITY

There has been a variety of responses to my article on aging in the community. Some of the problems seen as needing solutions:

- Loneliness, leading to depression.
- Absence of affordable transport.
- Ability to have garden, watch birds etc, if you are placed elsewhere.
- When you are placed in "care" outside the area there is a loss of identity. You tend to be like a kept animal in the zoo. Treated like you have no real capacity to think constructively.
- Staying in one's home is ideal, however there must be an alternative

way to allow people to affordably stay in community.

- A care facility would provide local employment.
- The attitude of some "carers from outside the area" can be frankly insulting and frightening at times.
- A common, casual meeting place, where everyone can feel safe and welcome.

I hope to be able to give a time and place for a community meeting in next Community News.

If we are to achieve anything we need widespread community support.

Clara Jones

Unlimited power in the hands of limited people always leads to cruelty.

- Aleksandr Solzhenitsyn -

### STOP!

Next issue Published  
21st March 2025

**\*\* DEADLINE \*\***  
**\*\* 14th Feb '25 \*\***

Send adverts & copy by  
email, website or post.  
Email, website, FB or  
phone for enquiries

# Fine weather presents hazard reduction opportunities

With clear skies and favourable weather conditions forecast, the RFS, National Parks and Wildlife Service, Forestry Corporation and Fire and Rescue NSW will be undertaking critical hazard reduction burns across the state this weekend.

Planned burns will take place in key areas, including the Bega Valley, Eurobodalla, Kyogle, Tweed, Hunter Valley and Greater Sydney regions.

Specific locations in the Hawkesbury, Northern Beaches, Hornsby, Sutherland and Southern Highlands areas will also see prescribed burns aimed at reducing fuel loads and enhancing bush fire protection for thousands of homes.

Commissioner of the RFS, Rob Rogers, emphasised the importance of taking every opportunity to conduct

these burns, particularly after previous years of wet weather and fire activity that have delayed crucial hazard reduction efforts.

“As we approach the end of this fire season, we must take advantage of these conditions to address the backlog of hazard reduction burns and ensure our communities are as prepared as possible for the next fire season,” Commissioner Rogers said.

This may see smoke visible and settle in some areas. Residents in affected areas are advised to minimise outdoor activities, secure doors and windows, shelter pets, and exercise caution when driving.

Individuals with respiratory or heart conditions, particularly asthmatics, should follow their treatment plans and keep medications readily available. More information on managing bushfire smoke exposure is available at [www.health.nsw.gov.au/environment/bushfire/Pages/default.aspx](http://www.health.nsw.gov.au/environment/bushfire/Pages/default.aspx).

Commissioner Rogers also reminded the public to remain vigilant.

“If you see or smell smoke, be assured that these burns are planned and closely monitored. Only call Triple Zero (000) if you see an unattended fire or one without fire trucks present,” he said.

The RFS encourages residents to

# NEW VPIT TRAINING

We’ve made some improvements to our popular Vertebrate Pesticide Induction Training (VPIT). The refreshed course makes it easier than ever to gain the certification you need to control pest animals safely using restricted pesticide products.

- It’s free and quick - only takes a few hours.
- It’s convenient - do it online anywhere, any time and at your own pace. It’s now more interactive online with better visuals and improved accessibility.
- Available online and face-to-face at some locations, depending on demand.
- Certification is valid for 5 years.

stay informed and prepared as hazard reduction efforts continue over coming months.

A comprehensive list and interactive map of scheduled hazard reduction burns can be found at [www.rfs.nsw.gov.au/hr](http://www.rfs.nsw.gov.au/hr).

NSW RFS Media Release



**AB ENVIRO**  
TREE SERVICES

Local  
Qualified and Insured Arborist  
Felling, pruning, deadwooding  
Free Quotes

**Contact Asher**  
**0481 353 982**  
[abenvirotrees@gmail.com](mailto:abenvirotrees@gmail.com)



\* Post & Rail  
\* Fence  
Painting  
\* Repairs  
\* Bobcat Hire

**Ricks Rural Fencing**

\* Chain Wire  
\* Wire Stock  
\* All types of rural fencing

*Servicing the Mountain for over 30 Years*

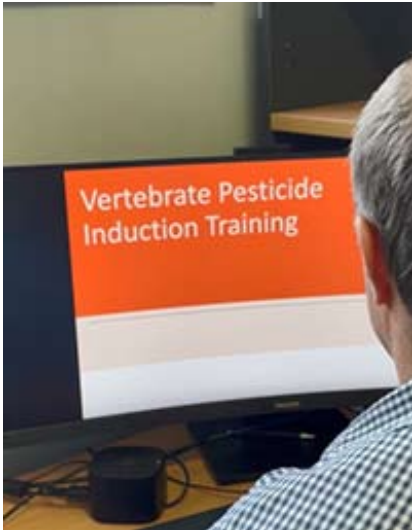
**Phone Rick 43731155**

**TKG** 

**Welding & Fabrication**

✦ Mobile welding ✦ Fully equipped service truck  
✦ Heavy machinery repair & modifications  
✦ Air arc gouging ✦ Hard facing  
✦ Steel horse & cattle yards  
✦ Sheet metal work, gates and railings

**Tim Green 0427 462 717**  
[timdgreen1971@gmail.com](mailto:timdgreen1971@gmail.com)  
[www.tkgweldingandfabrication.com](http://www.tkgweldingandfabrication.com)



Find out more and enrol now online.

All NSW landholders must hold an AQF3 Chemical Accreditation or VPIT certification to acquire and use pesticides and baits to manage feral pigs, rabbits, wild dogs and foxes.

The VPIT course provides guidance on the legal responsibilities, safety requirements and practical considerations you need to use pesticide products 1080, Pindone, RHDV or PAPP bait in NSW.

Gaining your certification means you can undertake control activities on your property to reduce the damage pest animals cause. Controlling pest animals through baiting programs



## Application for Appointment of Board Members

### Mangrove Mountain Flora Reserve (R.67322) Land Manager

Ever wondered who is responsible for keeping Crown reserves operating?

Countless facilities like showgrounds, local halls and parks are run by Statutory Land Manager Boards, made up of people just like you. People who understand the need and have a desire to manage public land and assets for the benefit of the entire community.

Your role as a Board Member is voluntary, but the rewards of giving something back to the community are priceless.

We are looking for a good mix of people with a variety of skills, however, sound business and financial management skills and objective decision-making expertise would be a distinct advantage.

Don't let this opportunity to do something for yourself and your community pass you by – contact us today.

The Mangrove Mountain Flora Reserve (R.67322) Land Manager manages the Reserve No. 67322 at Mangrove Mountain notified on 4-Feb-1938 for Preservation Of Native Flora. The term of appointment will be for a period not exceeding 5 years.

Application for membership can be made via [portal.crownland.nsw.gov.au](http://portal.crownland.nsw.gov.au)

All applications are required to be lodged by **4 April 2025**.

**For further information contact Joanne Muddle on (02) 4937 9364 or go to [reservemanager.crownland.nsw.gov.au](http://reservemanager.crownland.nsw.gov.au)**

is one way to meet your General Biosecurity Duty.

Remember to put your VPIT certification to good use by reaching

out to your local biosecurity officer for tailored advice on control programs. Call 1300 795 299.

*Hunter Local Land Services*



## Mountain Medicine

Providing the local community with a collaborative approach to multidisciplinary healthcare.

### Dr Christine Wade

B.Med (Hons) FRACGP

### Dr Sepali de Silva

MBBS

### Dr Rohan Dissanayake

MBBS

### Dr Anisa Rouhipour

MBBS

### Torin O' Grady

Podiatry (Foot Care)

### Pathology – Douglass Hanly Moir

Mon & Fri 8.30am to 1.30pm

Wednesday 12.00pm to 5:00pm

Ph: 437 41942



**BULK BILLING: Children under 16, Health Care Card Holders and Pensioners**

40 Niclins Rd, Mangrove Mountain NSW 2250  
**ph 4374 1252**

## MANGROVE MOUNTAIN PHARMACY



Monday - Friday: 9am-7pm

Saturday - Sunday: Closed

**Free Shingles Vaccine**  
**Now Available for over 65's**  
**No Booking Required**

- Free webster packing and all your pharmacy needs
- Vaccination
- Household goods and gifts
- Parcel point outlet

3/1 Waratah Road, Mangrove Mountain, NSW 2250

Phone: (02) 4374 1457 Fax: (02) 4374 1479

Email: [mangrovetmparmacy@gmail.com](mailto:mangrovetmparmacy@gmail.com)

# Reports of Armyworms in the District

Properties in the district have reported infestations of Armyworms that have decimated paddocks,

Armyworms are a native caterpillar pest of grass pastures and cereal crops. Armyworms mostly feed on leaves, but under certain circumstances will feed on the seed stem, resulting in head loss. The change in feeding habit is caused by depletion of green leaf material or crowding. In the unusual event of extreme food depletion and crowding, they will 'march' out of crops and pastures in search of food, which gives them the name 'armyworm'.

## Description

There are 3 common species of native armyworm found in southern Australia

*Note that the non-native fall armyworm (Spodoptera frugiperda) arrived in Queensland in February 2020 and has subsequently been found in the Northern Territory, Western Australia, New South Wales and Victoria.*

## Caterpillars

The caterpillars of the 3 species are similar in appearance, identifiable by 3 parallel white or cream stripes along their body, particularly apparent in larvae that are longer than 10 mm.

They grow from about 2 mm to 40 mm in length, have no obvious hairs, are smooth to touch and curl up when disturbed.

## Adults



Southern armyworm larva - Agriculture Victoria.

Moths are often seen flying on warm, humid nights. They are medium-sized, with a wingspan of 30mm to 40mm.

Each species has a characteristic colour and wing markings

## Lifecycle

Armyworm eggs are laid in batches of about 5 to 30, glued together in the hidden, twisted crevices of dried grasses, straw and stubble or sometimes in seed heads.

The eggs can take 6 to 20 days to hatch. It is the older and larger larvae that cause all the damage to crops.

The larvae tunnel into the soil to pupate and the adult moth emerges at least 4 to 6 weeks after pupation and migrates away from the region.

## Control

There are several insecticides registered to control armyworm caterpillars. As armyworm tend to



Adult common armyworm - David Hobern, iNaturalist CC BY

shelter at ground level during the day, good spray penetration in the canopy is necessary for effective control. Applying insecticide applications at night is also worth considering.

## Natural enemies

There are a number beneficial natural enemies that attack armyworm caterpillars. These include parasitoid wasps, spiders, carabid beetles, and predatory shield-bugs.

Be mindful that the use of broad-spectrum insecticides against a minor infestation may also kill off these beneficial predators, leaving paddocks vulnerable to subsequent hatchings of armyworm caterpillars.

Humid environments are conducive to fungal (and bacterial) pathogens which can also suppress armyworm populations in some circumstances.

*Information from Agriculture Victoria, Dairy Australia Limited, Department of Primary Industries NSW, Grains Research and Development Corporation*

## Dr. S. ANANDASIVAM

(ANAND)

MBBS, FRACGP, AMCC

For Doctor Appointments:  
Monday - Friday 9am- 5pm

*Laverty Pathology Service  
Available:*

Monday to Friday 8:00 till 3:30  
Saturday 8:30 till 12

**Medicare Bulk Billing**

**1639 Nurses Road  
Central Mangrove, 2250  
02 4373 1914**



## STORAWAY SELF STORAGE

- 15 Kangoo Rd. Somersby  
Ph 4311 3685
- 30 Arizona Rd. Charmhaven  
Ph 4306 4608

**Personal & Business Self  
Storage Options**

[www.storaway.com.au](http://www.storaway.com.au)

*\*mention this ad for 50% off your  
first 2 months storage fees\**

## TWO UNMISSABLE SHOWS FOR GREAT SOUTHERN NIGHTS

This March, FunHaus Factory brings two powerhouse performances to Gosford as part of Great Southern Nights 2025, a state-wide live music celebration featuring over 300 gigs across Sydney and New South Wales from March 21 – April 6. From riveting storytelling and theatrical flair to soul-stirring blues and roots, these events promise to ignite the stage and electrify audiences in true FunHaus Factory style.

In *The Belly of the Whale – Mikelangelo* (March 29) - Set sail on an unforgettable journey as Mikelangelo brings his acclaimed solo show, *In The Belly of the Whale*, to FunHaus Factory on Saturday, March 29. Part voyage across wild seas, part deep dive into the human soul, this intimate, theatrical experience weaves music and storytelling to explore the blurred lines between creator and creation, artist and family man.

Mikelangelo (Michael Simic) has captivated audiences for over 25 years, touring worldwide as a solo artist and frontman of Mikelangelo & The Black Sea Gentlemen. With 17 independent albums, sold-out performances from the



Genevieve Chadwick Band

Sydney Opera House to London's West End, and a dedicated global following, his charismatic performances are not to be missed.

Created in collaboration with writer/director Tracy Bourne - known for her work with Chamber Made Opera, Melbourne International Festival, and the ABC - this show blends humour, depth, and unforgettable music for a night like no other.

*Blues @ the Haus* - On Sunday, March 23, two beloved Coastie powerhouses - FunHaus Factory & Blues on the Mountain - join forces to launch the *Blues @ the Haus* season, featuring Genevieve Chadwick Band

and Woodie McClean. Described as the love child of John Lee Hooker and Janis Joplin, Genevieve Chadwick delivers raw, soulful blues, fiery guitar work, and an unfiltered energy that has landed her on stages at Byron Bay Bluesfest and tours alongside Joan Armatrading, Beth Hart, and Allen Stone.

Opening the night is Woodie McClean, a Central Coast artist blending soul, jazz, blues, and Americana into a heartfelt musical experience.

Head to the FunHaus Factory website to book your spot:

<https://funhausfactory.org.au/whats-on/>

## MANGROVE PRODUCE AND HARDWARE

1668 Wisemans Ferry Rd, Central Mangrove (just 1km from the Crossroads)

**TUCKERS CATALOGUE IS OUT NOW!**

**CHECK YOUR LETTERBOX OR PICK ONE UP IN STORE.**

**IT'S FULL OF GREAT BARGAINS**



- ◆ Horse Feed
- ◆ Fertiliser
- ◆ Paint
- ◆ Pet Food
- ◆ Timber
- ◆ Plumbing
- ◆ Bird Seed
- ◆ Hardware
- ◆ Fencing
- ◆ Vet Supplies
- ◆ Hand Tools
- ◆ Electric
- ◆ Chemicals
- ◆ Power Tools
- ◆ Fencing

Mon-Fri: 7:30am -5:00pm  
Sat: 8:00am -2:00pm

**Ph: 43731259**

SHOP ONLINE AT  
[www.tuckersstore.com.au](http://www.tuckersstore.com.au)  
or [shop.truevalue.com.au](http://shop.truevalue.com.au)

You are invited to a combined  
 'Mangrove Mountain CWA Evening Branch' and  
 'The Union Church Trust' Event

## POETS' BREAKFAST

Come and enjoy a hearty cooked breakfast with an array of yummy CWA home baked desserts & scones, juice and a bottomless cup of tea or coffee



*With plenty of poetry*



\$25 per head

When: Sunday 16th March 9am for a 9.30am start

*At Mangrove Mountain Union Church Hall  
 2154 Wisemans Ferry Rd, Mangrove Mountain NSW 2250*

Please buy your ticket for this event soon  
 as there is limited seating



Enquiries to Judy B 43771728 email  
 judybetteridge@gmail.com  
 With dietary requirements on request  
 (Please contact **Judy** before paying)

Bendigo Bank BSB 633 000  
 Acct No. 191925106  
 CWA NSW – Mangrove Mountain Evening  
*And put your name in as reference!!*

## RDA Central Coast

Annual General Meeting  
 on Tuesday 25th March. It  
 will start promptly at 7pm  
 at our Centre in Kangoo Rd  
 Somersby (Cnr Frank Rd).

Linda Bower  
 Secretary 🐾



### OUR SERVICES INCLUDE:

Custom built homes • Granny flats  
 Extensions • Carpentry services  
 Renovations • Decks & Pergolas  
 Waterproofing & Bathroom  
 renovations  
 Disabled modifications  
 Asbestos removal  
 Building maintenance

**Dane Meredith | Builder**  
 0420906499  
 dane@ebhbuilding.com.au

## WARD Septics and Water Tank Cleaning

- \* Large and Small Vac trucks
- \* Licenced plumber and drainer

**Call Paul 0438315514**

 **SepticCleaning.com.au**

## Pilates On The Mountain

**STRENGTH - TONE - FLEXIBILITY**

SPECIAL INTRODUCTORY  
 PRICE: \$10 (FIRST CLASS ONLY)

**WEDNESDAY 6PM  
 & THURSDAY 11AM**  
 ALL LEVELS WELCOME

CALL FOR MORE  
 INFORMATION

Mangrove Mountain  
 Union Church Hall



**MELANIE: 0405 453 374**



## Local Solar Power Experts

Living Off Grid  
 Has Never Been Easier

Brooklyn Trade Services are your  
 local solar electricians, for both  
 on and off-grid systems.

Our technicians are certified to  
 install state-of-the-art solar and  
 battery systems which are great  
 for the environment as well as  
 your home and or business.

Call us for a chat:

**1300 319 419**

[www.btselectric.com.au/bts-energy](http://www.btselectric.com.au/bts-energy)





### “Acreage Living in the Heart of Jilliby”

**34 Parkridge Drive, Jilliby**

4 3 6 2.50 ac

Discover the perfect blend of space, comfort, and convenience in this stunning acreage home on Jilliby's picturesque Parkridge Drive. Surrounded by other quality properties, this haven offers the ideal lifestyle for families craving room to grow while staying close to everyday essentials. Just minutes from the M1, Westfield Tuggerah, pristine beaches, and top schools, you'll love how seamlessly country charm meets modern convenience here.

Bathed in natural light and framed by scenic green views, this single-level home sits proudly on a usable hectare (2.5 acres). The thoughtful layout includes four spacious bedrooms, with the main suite boasting a walk-in robe and ensuite. Three well-appointed bathrooms ensure family convenience, while the extra rumpus room provides the perfect space for a playroom, home office, or retreat. High rake ceilings, timber flooring, ducted air conditioning, and a slow-combustion fireplace add warmth and character throughout.

Embrace the freedom of acreage living while staying connected to everything you need. Arrange your viewing today and experience the best of Jilliby.



## Your leaders in lifestyle property.

[stonerealestate.com.au](http://stonerealestate.com.au)

**Lifestyle Central Coast**

**Sales and Property Management**



**Scott Wall**

**0413 965 616**

[scottwall@stonerealestate.com.au](mailto:scottwall@stonerealestate.com.au)

# HOLY TRINITY CATHOLIC CHURCH

COME AND JOIN US TO WORSHIP AT OUR BEAUTIFUL CHURCH

LOCATED ON WISEMANS FERRY ROAD 3 MINUTES NORTH OF SPENCER VILLAGE

Spencer



WE GATHER ON THE 2ND SATURDAY OF THE MONTH FOR MASS AT 4PM

We would love the opportunity to meet you and welcome you to our community. Arrive earlier and enjoy a picnic under a shady tree in our beautiful grounds.

4350 WISEMANS FERRY RD, SPENCER  
 JOIN US ON FACEBOOK FOR THE LATEST INFORMATION  
 ANNE 0412201851, PETER 0407971340

## Rallying to raise funds for cancer research

Catherine Hyatt and Kate Wilson from Kulnura are Team 'Champagne Sheilas' and are raising funds for the Cancer Council by participating in the Mystery Box Rally 2025.

This rally will see us departing Broken Hill in mid August on a mystery five day route with 350 other participants. We will be travelling around outback Australia in a car that is at least 25 years old, via some of its most formidable roads and remote communities.

Look out for our 1982 Ford Fairlane cruising the mountain in preparation for our upcoming journey!

Practically everyone in the community has been touched by cancer at some time and supporting this rally provides an opportunity to help in a small way toward finding a cure.

This year the rally aims to raise \$1.3m for Cancer Council, which is used to fund cancer research projects nationally. Last year due to community support Champagne Sheilas were able to raise almost \$23,000. Our team is hoping to raise another \$20,000 this year.

As we begin our fundraising we



## Mangrove Mountain MEMORIAL CLUB & GOLF COURSE

### WHAT'S ON WEEKLY

#### TUESDAY

BINGO from 11am  
 \$15 Pizza night

#### WEDNESDAY

MEAT RAFFLE drawn at 730pm  
 \$18 schnitzels

#### THURSDAY

MEMBERS BADGE DRAW - 730pm  
 \$22 steak night

#### FRIDAY

HAPPY HOUR 4-6pm  
 COCKTAIL HOUR 6-7pm  
 MEAT RAFFLE drawn at 730pm  
 New restaurant specials every week from 530pm

#### SATURDAY

POOL COMP from 630pm  
 entry fee \$5

#### SUNDAY

Sunday Roast - available all day

**ADVERTISE YOUR BUSINESS HERE!**  
 CHOOSE FROM  
 In house Advertisement All day 7 days a week  
 In house Advertisement plus a golf cart advertisement  
 FOR MORE INFORMATION & COST CALL 4373 1129 OR EMAIL CEO@MMMCLUB.COM.AU

**MMM WEEKLY MEAT RAFFLES**  
 DRAWN AT 7.30PM  
 WEDNESDAY 10 MIXED TRAYS  
 FRIDAY 15 MIXED TRAYS 5 CLUB GIFT CARDS

**Happy Hour**  
 EVERY FRIDAY BETWEEN 4PM TO 6PM

**WARATAH Dining**  
 Open 6 days

Find Us On Facebook & Instagram - 18 Hallards Road, Central Mangrove, 2250 - 02 4373 1129 - www.mmmclub.com.au



are asking for donations that can be included as raffle or auction prizes. In return you will receive acknowledgement on our Facebook page.

If you would like to have your business advertised on the rally car or would like any more information please contact either Catherine (catherine@hge.net.au) or Kate (katie68@bigpond.net.au) and see how to make this happen.

If you would like to make a tax deductible donation you can do so via our We Give page <https://2025.mysteryboxrally.com.au/champagne-sheilas> Follow us on Champagne Sheilas Facebook page and see how our journey unfolds.

We hope you are able to support us in doing our small bit toward Cancer Research.

Catherine Hyatt



**OPEN 7 DAYS**  
**40 YEARS LOCAL**



General Dentistry | Emergency Care | Cosmetic Dentistry  
Orthodontics & Invisalign | Dental Implants | Oral Surgery  
Sleep Dentistry IV Sedation | Wisdom Teeth Removal  
3D CT Scanning | CEREC same-day ceramic restorations

02 4323 1933 | [www.vcdental.com.au](http://www.vcdental.com.au)  
Suite 10, 36-40 Victoria Street, East Gosford NSW 2250

**NEW PATIENTS**

> Comprehensive checkup & clean  
Includes up to 5 x-rays  
**No Gap** (with health insurance) or **\$290**

**OFFERS (all patients)**

> Free orthodontic consultation  
> Free dental implant consultation  
> Free cosmetic makeover consultation  
> Sport mouthguards: **No Gap** or **\$99**

**FINANCE**

> We **bulk bill** the Medicare CDBS  
> **Zip Pay & Zip Money** payment plans  
> We partner with **SuperCare**



# HEARING LOSS??

**FREE HEARING TEST AND HEARING AID TRIAL**

AVAILABLE IF YOU ARE ABOVE 50 YEARS



Micro-Suction, A safe and accurate ear wax removal available.  
Free hearing aids for eligible pensioners and Veterans.



02 43115511

Home visits  
for customers  
who can't travel.



Central Mangrove, Woongarah, Morisset and Wyee

[admin@welfasthearing.com.au](mailto:admin@welfasthearing.com.au)

[welfasthearing.com.au](http://welfasthearing.com.au)

## ATTENTION OVER 50'S SMART PHONE/TABLET USERS!!



Are you unsure how to use the many features on your phone or tablet?

Our Digital Connect sessions can show you how to use your phone/tablet for many applications.

Examples for phone and tablet are -

- Assessing mobile usage, who you pay (provider), what you pay and what you actually get.
  - How much data are you using each month
  - Understanding what you are paying for on your plan.
  - Accessing informative websites to continue your learning.
- and many more features .....

Sessions are held on 4th Thursday of the month.

**NEXT SESSION THURSDAY, MARCH 27, 2025**

**9.30am - 11.30am**

Mangrove Mountain Computer Club  
6 Waratah Road, Mangrove Mountain  
Enquiries - Suzanne 0412 298 126



**DIGITAL CONNECT - Free workshops**  
for over 50's to develop skills and knowledge in the digital world.

# Mountain community children's centre Inc.

## Mountain Community Children's Centre News

### Welcome to 2025

Mountain Community Children's Centre has been started the year out with lots of new children and families. We welcome all our new children to the centre and hope you enjoy our adventures with us.

### Thank you to The Country Fair Committee

We would like to say a huge thank you to the Country Fair committee for our grant from the 2024 Country Fair. We purchased some new large outdoor building blocks as well as some Lego Machines. See our photo attached. The children are very creative and make incredible constructions with both pieces of equipment.



**On The Go Constructions Pty Ltd**  
Specializing in the building of chicken sheds

Charlie Muscat is well known in the Industry, with over 12 years experience and has a reputation for quality workmanship.

- \* New Chicken Sheds \* Tunnel Conversions \* Roofing
- \* Machinery/Farm Sheds/Stables/Lofts/Piggeries \* Coolrooms
- \* All Fabricating services - All frames & trusses are fabricated by On The Go Constructions to Engineer specifications.

Call Charlie on 4374 1114 or 0408 684 719

**VISION FOR LIFE...**  
For all your concrete & pumping services,  
call Louis on 0418 409 576

CUSTOM DESIGN | BUILDINGS | EXTENSIONS | ALTERATIONS | DECKS | 



**KDF**  
CONSTRUCTION

0410 100 616 | kim@kdfconstruction.com.au | LIC NO. 267735C



**HUNTER  
EARTHMOVING  
SERVICES**

*"4th Generation of Earthmoving  
on the Mountain"*

**GENERAL EXCAVATIONS & CLEARING  
DAM & CHANNEL CONSTRUCTION, REPAIR & CLEARING  
PRIVATE ROAD/DRIVEWAY CONSTRUCTION & REPAIR**

- 20 TONNE EXCAVATORS
- 25 & 30 TONNE DUMP TRUCKS
- LONGREACH EXCAVATOR (16m)
- SKIDSTEER & ROLLERS
- 30 TONNE LOW LOADER, TRUCK & DOGS

**ATTACHMENTS:**  
RANGE OF BUCKETS & AUGERS  
GRAB - HAMMERS - RIPPER  
PULVERISER - MULCHING HEAD  
POWERRAKE - SLASHER

**Wayne Hunter - 0431 761 338**  
**E hunterearthmoving@bigpond.com**

**About Us**

For those who do not know the centre, we are a community based Early Childhood Education and Care Centre catering from children from 0 – 6 years of age. We run a fantastic play-based program that includes all children. All children, all cultures are included in the program and Aboriginal perspectives are imbedded in our practices. I will publish further history of the centre in the next edition of the community News so keep an eye out.

If you would like to join our waiting list or have a look around the centre, please feel free to give us a call on 43741239. Noni our very friendly

administration officer would be more than happy to post out an enrolment pack or organise a tour of the centre. We look forward to welcoming you to our centre.

Until next time with news from the Children’s Centre.

*Louisa Foxford  
Director*

*Mountain Community Children’s Centre  
2829 Wisemans Ferry Road  
Mangrove Mountain  
NSW 2250  
Ph: 43741239  
Email: mountainchildren@bigpond.com  
www.mountainchildren.com.au*



Beauty,  
Cosmetic Tattooing,  
Eyelash Extensions  
& Makeup  
Salon service & Mobile

**0437 016 592**  
Instagram: @golden\_beauty\_bar\_au



**MOUNTAIN DISTRICTS  
CHRISTIAN CHURCH INC.  
NOTICE OF AGM**

The Annual General Meeting  
to be held on Sunday 13th April  
2025  
at 11am (after the Church Service)  
in  
the Union Church Meeting Hall, at  
2154 Wisemans Ferry Road,  
Mangrove Mountain.

# ANZAC DAY



Proudly presented by



The Palmdale Group will host ANZAC Day Ceremonies at both Palmdale and Greenway on 25th April, paying respect to the memory of our service men and women.

Services and Wreath laying ceremonies will be held at both Palmdale and Greenway.

**Palmdale Lawn Cemetery & Memorial Park**

57 Palmdale Road,  
Palmdale, NSW.

Commencing at 9am,  
the service will be  
held adjacent to the  
Defence Force Memorial.

**Palmdale phone:  
4362 1203**

**Greenway Chapel & Memorial Gardens**

460 Avoca Drive,  
Green Point, NSW.

Commencing at 11am,  
the service will be  
held adjacent to the  
Defence Force Memorial.

**Greenway phone:  
4369 2013**



LEST WE FORGET

creightonsfuneralservice.com.au

# EPA must come clean about landfill's impact on our water catchment

The NSW Environmental Protection Authority (EPA) must immediately conduct testing for Per- and Polyfluoroalkyl (PFAS) in the creeks surrounding the Mangrove Mountain Landfill and must do so regularly, according to the Community Environment Network (CEN).

CEN Chair, Gary Chestnut, said

the testing was necessary following Central Coast Council's revelation that PFAS had been found in a raw (untreated) water sample in Ourimbah Creek.

"Given the fact that Ourimbah Creek is part of the Central Coast's drinking water supply catchment, the revelation that PFAS has been detected, immediately sounds a loud alarm that this may be related to the Mangrove Mountain Landfill," Mr Chestnut said.

According to the EPA's website, as part of the authority's commitment to transparency and safeguarding the environment, 'the EPA is regularly undertaking compliance inspections and is reviewing the Environment Protection Licence to ensure that it provides effective measures to monitor

the environmental impact of the site'.

"The EPA says it conducts inspections of the landfill to assess the management of water and leachate... It says staff from the EPA and Department of Climate Change, Energy, the Environment and Water (DCCEEW) have conducted sampling of Ourimbah Creek and its tributaries over several years.

"The most recent sampling was conducted by the EPA and DCCEEW in February 2024 but it appears the water was not tested for PFAS at that time.

"Given the outcome of testing conducted by Central Coast Council, it is imperative that all creeks surrounding the landfill, Hallards Creek, Stringy Bark Creek, Ourimbah Creek and the unnamed creek that flows directly under the landfill mass, must be tested










**OILS    CLEANING    CAMPING**  
 43885911    0437 44 5919  
[www.coastandvalleyoil.com](http://www.coastandvalleyoil.com)



**LR to HC Licences**

**Paul Viola: 0481 409 309**

ABN: 36 659 041 880  
 info@coastaltrucklicences.com.au  
 Coastal Truck Licences



**Services:**

- Site Levelling
- Land Clearing
- Horse Arenas
- Roadways
- Certified Fill Material

**Machines:**

- Excavators / Augers
- Posi Track with Laser Level Grader
- Dozer
- Truck & Trailer Tipper

**Michael Schembri**  
**0419 236 788**

Follow us  

**ALL ASPECTS OF TREE WORK**



- Truck & Chipper
- Cherry Picker
- Excavator
- Forestry Mower

Local Arborist, friendly & experienced team. Insured

Tim - 0412 985 422 or [tijanotreeco@gmail.com](mailto:tijanotreeco@gmail.com)

**MAINLINE BATHROOM RENOVATIONS**



Lic: L2101

*We supply all licenced, qualified trades required to complete your bathroom renovation*

**Steve Karczmarz**  
 0419 999 054  
 steve@stevembr.com  
[www.mainlinebathroomrenovations.com](http://www.mainlinebathroomrenovations.com)



*Mangrove Mountain landfill discharge water flowing into Jiliby Conservation area and Stringy Bark Creek 2020 (CEN)*

made aware.

“The EPA has been complicit in the travesty of this landfill. It amended the operators’ Environmental Protection Licence 12 times in breach of the NSW Protection of the Environment Operations Act 1995.

“Over the life of that landfill, when the operator breached the conditions of its licence, rather than enforce, the EPA simply amended the licence to accommodate the breach. If there is PFAS in our water catchment and the source is the landfill the EPA is directly responsible.

“The EPA put revenue from dumping fees before protecting the environment and the Central Coast’s drinking water catchment over the lifetime of the landfill at Mangrove Mountain which fell under the disguise of the remodelling of a golf course.

“The Central Coast Council, as our water authority, has been required to test for PFAS and has announced the results. Now the EPA needs to come clear and test the creeks surrounding Mangrove Mountain landfill for PFAS on an ongoing basis.

“If PFAS is detected in those creeks the EPA must work to immediately remediate the site and deliver a solution to keep our drinking water safe.”

The EPA water testing results for the creeks around the landfill can be found here

*Community Environment Network*

regularly for PFAS.

“It will soon be 12 months since Verde Terra discontinued its appeals in the Land and Environment Court against judgements that said that it was required to lodge a development application with a supporting Environmental Impact Statement if it wished to continue any landfill operations at the site.

“It is over 12 years since the legal proceedings about the development

consent regarding the redevelopment of the golf course started for the Central Coast community who continue to live with the unapproved, unlined landfill and its uncontrolled leachate at the top of our water supply catchment.

“The residents living downstream of the testing site deserve to be made aware of the risks. As part of our drinking water supply catchment all residents of the Central Coast need be

**BLISS EARTHWORX**

- Excavator with Buckets, Hammer, Auger & grabs.
- Posi track with 4in1 bucket, forks & spreader bar
- Tipper 6 ton                      • Posi track slashing

**Excavation - Concrete - Landscape**

Facebook, Instagram  
 Email: blissearthworx@gmail.com  
 ▲ Based in Somersby ▲

**0409 456 003**

**ROAD BASE AND DRAINAGE AGGREGATE**

**Ex Yard or Available For Delivery**

**Please call Jake 0409923155 for a free quote**

**Land Surveyors**

Surveying the mountain and districts for 100 years. Detail, Boundary, Identification, Construction and Volumetric Surveys, Subdivisions and more.

For a free quotation call us on 02 4324 2566 or email us at admin@bannisterhunter.com.au

**BANNISTER & HUNTER** | **100** years Surveying the Coast since 1924

**CM HALL HORSE BURIALS**

[www.horseburials.com.au](http://www.horseburials.com.au)

**Contact Craig on 0411 2888 12**

## Magnolia on Finns!

131 Finns Road, Kulnura  
\$3,450,000

- 5
- 3
- 10
- 21.5 ac



## Much Loved Homestead with Breathtaking Views

186 Forest Road, Kulnura  
Contact Agent

- 4
- 3
- 2
- 25 ac



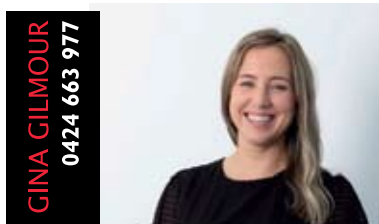
## Private Acreage Oasis!

123 Pryor Road, Ourimbah  
\$1,100 p/w

- 4
- 2
- 2
- 28 ac



Contact one of our agents | CALL 02 4324 8486



[www.ccselect.com.au](http://www.ccselect.com.au)



### Office Address

Suite 1,  
2/872 Pacific Highway, Lisarow NSW 2250

P: (02) 4324 8486

E: [info@ccselect.com.au](mailto:info@ccselect.com.au)

# Focus on Porters Creek Wetland

News that the Central Coast Airport Masterplan was adopted at the February Central Coast Council meeting placed CEN on high alert and our reading of the masterplan and accompanying documents gives us great cause for concern.

It appears the majority of councillors have agreed to a masterplan that involves the rezoning of at least 5.19 ha of the state significant Porters Creek Wetland in favour of an airport.

The maps included with the business papers indicate that the council needs to rezone 5.19 ha of a coastal wetland of state significance for tree heights to be trimmed or mowed to ground level.

The maps also tell us that a further 6.38 ha of Endangered Ecological Community is to have tree heights trimmed or mowed to ground level resulting in a total of approximately 11.53 ha of C2 zone land to be rezoned Special Purpose.

Councillors voted to expand an airport at the expense of a state significant wetland and the Endangered

Ecological Community in contradiction of resolutions passed over a number of years.

The majority of councillors also voted to rescind years' worth of resolutions made by the elected body that have been ignored by staff.

"The thing that really shocked me was all the resolutions that the staff want to rescind," said CEN Chair Gary Chestnut, who spoke against the staff proposal at the Community Forum held before the council meeting. "When you look at those resolutions, they are actions the elected council asked staff to do that they have avoided for years.

"It feels like the culture at Central Coast Council has had a hidden agenda that meant it did not implement the lawful resolutions of the elected council.

"I cannot see how local politicians can stand up and say they want to rezone an Endangered Ecological Community and a state significant wetland for an airport.

"The maps make the proposed rezoning look like a small postage stamp out of the total area, but the wetland is an ecosystem and as such it is like a total body.

"You can lose a hand, and it won't have that much impact but what if you take away an eye? Some members of the community would not accept getting their hand cut off for the benefit of something else let alone losing their

sight."

Read our latest reports on the fate of Porters Creek Wetland: <https://cen.org.au/news/councillors-asked-to-defer-airport-masterplan-until-they-have-all-the-facts/>.

## How can you help?

Even though the majority of councillors voted to adopt the airport masterplan on February 25, CEN will keep working to oppose the Planning Proposal that would rezone C2 land to SP2.

We also intend to continue our campaign to have Porters Creek Wetland reclassified from Operational to Community land so it cannot be sold.

We will need to monitor activities around the airport to ensure no damage is done to C2 land before a promised Biodiversity Stewardship Agreement is in place.

Carefully tracking the progress of the BSA will be another task.

That's why we need you to join FRIENDS OF PORTERS CREEK WETLAND. We will need as many residents as possible to write letters, attend events and meetings and be vocal about the need for Porters Creek to be protected.

Join at <https://cen.org.au/campaigns/friends-of-porters-creek-wetland>

Community Environment Network



**JEREMY AOUN**  
PLUMBER | GAS FITTER | ROOFER

OVER 30 YEARS EXPERIENCE  
ALL YOUR RURAL PLUMBING NEEDS

**Mobile: 0424 894 225**  
Licence: 134701C  
Email: [aussieplumbing1@gmail.com](mailto:aussieplumbing1@gmail.com)



**Kulnura Computers  
Supplies & Services**

4373 1237

- ❖ Custom Built Computer Systems
- ❖ for the Home - Office - Extreme Gaming
- ❖ Computer Repairs - Virus removal
- ❖ Upgrades
- ❖ Software - Accessories
- ❖ Electronic components

**OUTLAND Mechanical  
& Maintenance Service**

Licence No. MVRL54125 ABN 14814837840



**Mobile Diesel Mechanic**

- Specialising in Small Fleet Diesel Service
- Tractors • Farm Machinery • Mowers
- Earthmoving Machinery
- Welding

**John: 0427 660 752** [jhellyer67@gmail.com](mailto:jhellyer67@gmail.com)



- Local Painter
- New and Repaint
- Industrial, Commercial and Residential

**Call Frank: 0411 185 717**

## REGULAR ACTIVITIES & MEETINGS

### RURAL FIRE SERVICES

Bucketty RFS	Weekend Training Station Maintenance General Meeting	3rd Sat, 9am-12 pm, breakfast 8.30am Every Thurs as required, generally 10am-1pm 3rd Sat in even months, at 1pm, All welcome bucketty@lowerhunterffrs.com.au 4998 8130
Calga-Mt. White RFS	General meeting Training Information & updates Contact	3rd Mon of the month, 7.30pm all welcome Every Monday 6.30 except public holidays Facebook.com/calga/mtwhiteruralfirebrigade/ Captain.calgamtwhite@ccrfs.org.au - Zack Winslade.
Kulnura VBFB at Greta Rd Station	General meeting Training	1st Wednesday of the month, 7.30pm 3rd Wednesday of the month 7.00pm
Mangrove Mountain RFS Bloodtree Rd	General Meeting Training / Maintenance	Last Wednesday of the month, 7 pm, All Wednesday's except last of month, 7 pm
Spencer RFS	General Meeting Training Maintenance	2nd Monday of the month Meeting 6.30pm 3rd Monday 6:30pm 4th Monday 6:30pm E: captain-Spencer-vol@rfs.nsw.gov.au 0415 668953. 4778 Wisemans Ferry Rd
Somersby RFS	General Meeting Training/Maintenance	First Wed of the month 7.30pm at the Station Every Wed night 7.30 at the Station (except before Wed general meeting)
Yarramalong RFS		Information: <a href="http://www.facebook.com/YarramalongRuralFireBrigade/">www.facebook.com/ YarramalongRuralFireBrigade/</a> Phone contacts: 0406 360588 or 0418 280764 Email: volunteer@yarramalongrfs.org.au

### COMMUNITY & SOCIAL

Central Coast Plateau Chamber of Commerce Coastlink Friendship Group		First Tuesday each month 7.00PM MMMC Wed 9.30am-2pm at the Health Centre, Nurses Rd, Central Mangrove
Country Women's Association (Somersby)		Second Wed of each month, at Somersby Hall Wiseman's Ferry Road, Somersby, contact Sue, 43721280 or 0407768000.
Country Women's Association (Peats Ridge & District)		Third Monday of the month at Community Hall, Peats Ridge School. Any enquiries please contact Christine 0419 400163.
Country Women's Association (Mangrove Mountain Evening Branch)		2nd & 4th Tues of the month, 4-8pm at Mangrove Mtn Union Church, 2154 Wisemans Ferry Rd, MMtn. General meeting 6pm 2nd Tues. Ph Judy 43771728
Gosford North Inner Wheel club		2nd Wed each month 11am at Phillip House in Kariiong. Contact: Glenis Ph: 0400 486 760
Kulnura & District Garden Club		Second Monday, 9.30 for 10am start. Jacqui Maxwell 0455364262 kulnuradgc@gmail.com
Kulnura Tuesday Tennis		Tue 9.30am-12.30pm, Kulnura Tennis Courts. Enquiries: Alison Palmer 0427731548.
Ladies of the Valley Afternoon Tea		1st Tues, 1pm to 2.30 at Angels Sussurri Cafe Yarramalong. Margaret Dale 0411104770
Mangrove Mountain Singers		1st & 3rd Tue, excl Dec. Mangrove Mtn Hall, 7-9pm Contact Kim & Leila 0401516501
Mangrove Mountain & Districts		1st Thurs of the Month, excl Jan. 7.30pm, Mangrove Community Group Meeting Mtn Hall. Contact: mepccinc@gmail.com, 0412669649
Mangrove Emergency Planning & Communications Committee		
Mangrove Mountain Country Fair Committee Meeting		3rd Thu of mth except Jan, 7pm, at The Hub of Mangrove Mtn. Pres- Shane 0417 436 529
Mountain Districts Association (MDA)		<a href="http://www.mountaindistrictsassociation.com.au">www.mountaindistrictsassociation.com.au</a> secretary@mountaindistrictsassociation.com.au
Mountain District Football Club Meeting		Second Tuesday of the Month 6.30pm at the Mangrove Memorial Club
Probus - West Gosford		2nd Thu. Ph Elaine Burrows 0412988353
River Cares for the Lower Hawkesbury River District		President Marlee Maxwell Email rivercaresinc@gmail.com
Rotary Club Meeting		Friday 7.15am at Phillip House. 43404529
Spencer Community Progress Group Inc		President Brad Maisey, Community Meetings, 0436482201, spencercpg2@gmail.com
Spencer Community Ladies Social Club		Last Fri of month. 12.00 noon Spencer Community Centre, Jennifer Dayes 4377 1364 Articles to: spencercpg2@gmail.com
Wisemans Ferry Community Men's Shed		Tues & Sat, 9am-5pm. Contact: Alan Hunt 4566 4626 or Adrian Acheson 0448 833 781

### SPIRITUAL

Anglican Service - Mountain Districts		Every Sun 8am at Peats Ridge Scout Hall, Sunday School during school terms
Mangrove Mountain Union Church Trust		Committee Meeting 3rd Monday, 7.30pm at the Mangrove Mountain Union Church Hall
Mangrove Mountain Christian Service		9.30am second and fourth Sundays. Mangrove Mountain Union Church
St Barnabas Christian Service Yarramalong		Every Sunday, 9.30am. (Easter & (Christmas Carols dates to be advised)

(cont'd next page)

## LIVESTOCK MARKET REPORT



### Maitland Liveweight Cattle Sale 17th February 2025

450 Cattle yarded today at Maitland.  
420 Trade/Yearling cattle and 30  
exports.

Trade job was firm to 15c stronger.  
Export job remained firm.

- Restocker steers up to 250kg made 330c/kg to 465c/kg
- 250kg-300kg made 330c/kg to 425c/kg
- 300kg to 380kg made 320c/kg to 406c/kg
- Restocker Heifers up to 250kg made 240c/kg to 335c/kg
- 250kg-300kg made 250c/kg to 355c/kg
- 300kg-380kg made 270c/kg to 344c/kg
- Yearling Steers to Feed made 330c/kg to 406c/kg
- Yearling Heifers to Feed made 280c/kg to 320c/kg
- Butcher Vealers made 320c/kg to 360c/kg
- Cows Made 150c/kg to 280c/kg
- Bulls made 240c/kg to 260c/kg

### Maitland Liveweight Cattle Sale 10th February 2025

600 Cattle yarded today at Maitland.  
550 Trade/yearling cattle and 50  
export.

Trade Job was stronger. Export job  
also stronger.

- Restocker steers up to 250kg made 330c/kg to 460c/kg
- 250kg-300kg made 340c/kg to 425c/kg
- 300kg to 380kg made 310c/kg to 425c/kg
- Restocker Heifers up to 250kg made



- 240c/kg to 345c/kg
- 250kg-300kg made 250c/kg to 325c/kg
- 300kg-380kg made 260c/kg to 315c/kg
- Yearling Steers to Feed made 320c/kg to 390c/kg
- Yearling Heifers to Feed made 260c/kg to 310c/kg
- Butcher Vealers made 330c/kg to 375c/kg
- Cows Made 160c/kg to 284c/kg
- Bulls made 200c/kg to 250c/kg

A friendly reminder that we are often in the area seeing clients and looking at their livestock and if you would like us to call in be sure to give us a call.

Like and share our Facebook page!  
Keep up to date with [bowelidbury.com.au](http://www.bowelidbury.com.au)

Michael Easy & Rodney McDonald  
Bowe & Lidbury  
52 Kyle Street, Rutherford NSW 2320  
P: 02 4932 7066

**.:KSR.:  
NEW  
GRAVEL  
ROADBASE  
\$50/T  
DELIVERED  
0411 868 437**

## REGULAR ACTIVITIES & MEETINGS (cont'd)

**Catholic Service - Central Mangrove**  
- Spencer  
- Wollombi  
- Yarramalong

**Divine Retreat Centre**

**Serbian Orthodox**

**Kariong Community Baptist Church**

**Restitution Ministries  
Independent SDA Church**

**YOUTH**  
Junior Girl Guides 5-10  
Girl Guides 10-15

Scouts, Cubs & Venturers  
Peats Ridge Scout Hall

**HISTORICAL**  
Brisbane Waters Historical Society  
Dharug & Lower Hawkesbury  
Historical Society Inc.  
First Fleeters Central Coast Chapter  
The Pearl Beach Aboriginal History Group  
Wyong District Museum &  
Historical Society

**ACTIVITY/HOBBY**  
Coastal Communicators Toastmasters  
Craft/scrapbooking  
Saturday Craft Group/Spining  
and bobbin lace  
Yarn group (knit, crochet etc)

**HALL BOOKINGS**  
Kulnura Hall  
Mangrove Mountain Hall  
Mangrove Mountain Union Church & Hall  
Somersby Hall and Mountain Districts  
Culture and Heritage Centre  
Yarramalong school of Arts / Hall

Saturdays 5pm St. Dionysios Greek Orthodox Church, 21 Nurses Rd, Central Mangrove, Contact Nai Hereford 0405 558 669  
Holy Trinity Church, 2nd Sat of the month 4pm, Contact 0412 201 851 as times may change each month.  
2nd & 5th Sunday of the month, 4.30pm Mass at St Michael the Archangel, Wollombi.  
1st Sunday each month, 11.15am St. Barnabas All welcome. Enq 0428 438577  
Daily Holy Mass 8.00am to 8.30 am  
Last Sun, 9am-4pm, One Day Retreat.  
160 Hensons Road, Somersby Ph 0243721598  
2nd & 4th Sun. of the month. 10 am, followed by luncheon, tea, coffee, cakes (cost \$20).  
1184 Peats Ridge Rd, Peats Ridge  
Sun @9.30am, Church & Kid's Program, Philip House, Mt Penang Gardens, Chris Clarke email [pastorkcbc@outlook.com](mailto:pastorkcbc@outlook.com)  
10am every Saturday, Mangrove Mountain Union Church.  
Kooree Guide Cabin, 5.00pm – 6.30pm  
Mondays in school term,  
Kooree Guide Cabin, 6.00pm-7.30pm  
Mondays in school term, Contact 0417451764 for further information  
Cubs meet 6.30pm – 8.30pm Wednesdays  
Scouts meet 7.00pm – 9.00pm Tuesdays  
Venturers meet 7.00pm – 9.00pm Mondays  
Contact 0460 696 941  
25-27 Henry Kendall St., West Gosford, Ph: 4325 2270. [www.henrykendallcottage.org.au](http://www.henrykendallcottage.org.au)  
Last Sat of month. All welcome, contact Jan Kofron 0405321478 [jankofron@optusnet.com.au](mailto:jankofron@optusnet.com.au)  
2nd Sat of the month, 10.00am for 10.30, Point Clare Hall (except Jan & Dec). Contact Margaret 0409467710 or Gavin 43404435.  
3rd Fri of month 7.30pm Pearl Beach. Peggy 0411754577 [pbaboriginalhistory@gmail.com](mailto:pbaboriginalhistory@gmail.com)  
Open Sun to Thurs, 10am-2pm, other times by appt. Contact 43521886 email [info@alisonhomestead.com.au](mailto:info@alisonhomestead.com.au) website: [www.alisonhomestead.com.au](http://www.alisonhomestead.com.au)  
1st & 3rd Thurs of month, 6:45pm to 8:45pm at Doyalson-Wyee RSL. Debbie 0421216952  
Yarramalong Hall 10am to 5pm, \$12/person. Bring along your projects. Dates & details: [stackm@skymesh.com.au](mailto:stackm@skymesh.com.au) or ph 43561196  
2nd Sat of the month Somersby Hall (10am to 2pm) cost \$5 per person Carmen 0434071305  
Last Sunday of month 2pm at Angels Sussurri Cafe Yarramalong. Contact Margaret Dale 0411104770  
Contact Central Coast Council.  
Hall bookings Ryan Howard 0405416289  
Church & Hall bookings 0412669649 [mmucsecretary@outlook.com](mailto:mmucsecretary@outlook.com)  
Hall bookings: 0413 359 655  
or AH 4373 1488  
[enquiries@yarramalonghall.org.au](mailto:enquiries@yarramalonghall.org.au)  
<https://yarramalonghall.org.au>

**MDS**  
MOUNTAIN DEVELOPMENT  
SOLUTIONS

## SCREW PILING

**RURAL: TRACK LOADER & EXCAVATOR HIRE  
ROAD & DRAINAGE REPAIRS  
ROCK & BLOCK RETAINING WALL  
SUPPLIED & BUILT**

**0417 479 525**  
John White

**CNS Electrical**  
Lic No. 214132C

Your local Electrical Contractors on the mountain, specialising in Rural, Domestic, Commercial and Industrial works, including:  
Excavation, Trenching, Mains & Sub-mains, Voltage Calculations & Future Planning.

**Call Cameron for a quote on: 0438 695 600**  
Office: 0480 467 894  
Email: [admin@cnelectrical.com.au](mailto:admin@cnelectrical.com.au)



# Congratulations Future Sooner!

The mission of the Community Environment Network is to support ecologically sustainable development (ESD) and oppose threats to it. Our primary concern is always protecting biodiversity and standing up for nature.

ESD also crosses over into the built environment and the impacts of development on habitat, including human habitat. That is why we are proud to support the work of our Member Group, Future Sooner.

Last August Future Sooner held a Citizens' Inquiry into the impacts of coal-fired power stations on human health. This was the first time members of the communities located around Vales Point, Eraring and Colongra/Munmorah power stations and ash dams were given the opportunity to tell their stories.

Their testimonies were moving and distressing. They have now been captured in a final report that will be launched at NSW Parliament on 25 March.

The report's recommendations will call on the NSW Government to take action to reduce the health risks that are clearly related to the burning of coal to make electricity and the storing of the by-product coal ash in massive

## POSITIONS AVAILABLE

WESTY'S PLACE is a pumps, irrigation and farm engineering business based in Central Mangrove. We have been here for over 60 years and service the Mountain district.

Westy's Place is looking for office staff. Duties include customer service, stocking shelves, ordering product, general tidying of the shop, writing up of quotes or email enquiries and minor accounting procedures. We are looking for a staff member for the hours 9am-5pm, 2-3 days a week and some Saturdays 7.30am-12 Middy.

Must have

- Computer literacy
- Physically fit enough to lift and move items
- Desirable
- Knowledge of Irrigation fittings and systems or willing to learn
- Practical/ mechanically minded
- Customer service experience
- Living Locally

What we can offer you! Willingness to be flexible with hours, training in our accounting software, rates above award wage, training related to pumps, irrigation and agricultural machinery. Depending on competency we may be able to offer more hours in the future.

Please get in contact with us if you think you would suit this role.

info@westysplace.com.au / 4373 1164

unlined and uncovered dams.

Once the report is released, representatives of Future Sooner will be embarking on a "roadshow" to share their results with local communities and organisations.

If you would like your local community group, progress association or special interest group to have a Future Sooner representative come

## POSITIONS AVAILABLE

HC DRIVER WANTED for easy runs 2-3 nights per week

- 1-2 nights approx 4hrs return trip from Mangrove Mountain to Sydney Market (Sunday-Monday, Thursday-Friday)

- 1 longer night approx 4.5hrs driving, load and unload, approx 3hr wait in between (Tuesday-Wednesday)

- Must have fork lift licence/experience
  - Must have semi road ranger experience
- Phone Peter on 0422 082 764

## FOR SALE

GALE'S CITRUS - Bagged Citrus trees in various sizes available ph. 4372 1408 or mobile 0421 196 631

WATER LICENCE Kulnura Mangrove Mountain Ground water source 45 Megs, open to offers, call 0407761375

PLASTIC CRATES - Perfect for Growing crops or used as Benches. Lots of other uses, large quantity available. Stackable, 60cm x 40cm. From \$1.00. Ph 0408 432 999

FIREWOOD \$150/bin phone 0419412993

FOR SALE OR HIRE

Case 21T Excavator 5750 hrs - 2012 CX210B. Serviced regularly. Great machine, owned by owner operator. Mud, GP and 450 buckets. \$70,000.00 ex GST. Ph. 0447 409 049

to a meeting to share the findings of the final report, please contact [futuresoonernsw@gmail.com](mailto:futuresoonernsw@gmail.com)

Congratulations Future Sooner. Let's hope the NSW health and environmental authorities pay attention to the recommendations.

GaryChestnut, CEN Chair

## Antennas - Digital

Hayward Video & Antenna Service

**VAST Satellite Service**  
"Government approved installer"

**Ray Hayward**  
mob: **0412 685 555**

email: [Ray.Hayward@gmail.com](mailto:Ray.Hayward@gmail.com)

## Bikes n Motors

---

### Motor Vehicle Repairer Service & Repairs

Motorcycles ★ Light Vehicles  
Cars ★ ATVs ★ Buggies ★ Quads

---

Call & Book Now

## PH: 0491 622 080

1154 George Downes Drive,  
Kulnura, NSW, 2250.  
★ Behind Jerrys' Cafe ★  
[bnm@bikesnmotors.com.au](mailto:bnm@bikesnmotors.com.au)  
[www.bikesnmotors.com.au](http://www.bikesnmotors.com.au)

PINK & BLUE  
SLIPS

Licence No:  
MVRL56584

## DURABILITY CONSTRUCTIONS & EXCAVATIONS PTY LTD

Lic: 228069C

Bricklaying - Blocklaying  
Retaining Walls - Concreting  
Renovation - Extensions - Repairs  
Property Maintenance

Do you have a challenging problem?  
Then call us.

M: 0450 639 524

## CLASSIFIED ADVERTISEMENTS

These columns will be set aside each issue for residents to advertise inexpensively and effectively in their own local paper. If you have anything you wish to sell, buy, swap, etc., ring 4374 1039 or 0412 669 649 during office hours. Rates start at \$4.00.

### ACCOMODATION WANTED

PENSIONER with 2 rescue dogs looking for 2-3 bedroom cottage in Yarramalong/Cedar Brush/Mangrove area. Please call 0400111219

### FOR RENT / LEASE

FLAT TO RENT in Kulnura, fully renovated, 2 large bedrooms, 2 car spaces, \$550 per week incl electricity. References required. Contact Frank on 0438761260

3 BR COTTAGE in Yarramalong Ph 0428594629 (no text please)

### WANTED

OLD BATTERIES, will pickup, phone 0413 975 107

SUBARU FORESTER 2006 complete undamaged body for parts only ph 0427066384

### AGISTMENT

HORSE AGISTMENT AVAILABLE. Full care. Group and individual paddocks with shelters. Full size sand dressage arena, grass jumping arena. Located walking distance to Peats Ridge Village and Café. Call Cameron on 0438695600

### SERVICES AVAILABLE

AIRCONDITIONING, BUILDING, CARPENTRY - Local service, 14yrs experience in aircon, 22yrs experience in building & carpentry. Call Ken 0412 842 920

KELLY'S KLEANING SERVICE. Cleaning the mountain & the coast. Call Kelly on 0420541196

### SERVICES AVAILABLE

DOG SITTING/WALKING. Honest & reliable. Call 0438506837

BRICKLAYING & Render repairs. Adrian 0408347737. Lic 98665C

TOWN 'N COUNTRY FLOOR SANDING & POLISHING New & old floor boards, parquetry, verandahs, stairs, walls ceilings, re-coating, staining & painting ect. free quote ph Stuart 0400076261 in services available.

LOCAL CLOTHING ALTERATIONS AND REPAIRS - Contact Yolanda on 0408733243

RURAL FENCING - Post & rail, wire stock, chainwire, colourbond, paling etc. Also Landclearing. Phone Rick 4373 1117

### ALL TERRAIN SLASHING

Track mounted slasher/mulcher and excavator mounted flail mower. Sloping land, fire breaks, hazard reduction of low vegetation, (lantana, etc) fence line clearing, broad acre slashing. Free quotes. Bliss Earthworx 0409456003

### HORSE BURIALS

Specialising in the on-site burial of your precious horse. Ph Craig 0411 2888 12

ROOF AND GUTTER CLEANING, call Alan on 0427606303. Call for a free quote

METAL PATIOS, INSULATED ROOFS & Carport Builder. Custom made awnings, Decks, Carports & Sunrooms 0420906499

Laurie Douglass Plumbing Plumber, Drainer, Gasfitter, Roofer - Ph 4373 1257 Mob 0407 008 488

OOST Painting Contractors - Lic 71725C  
Quality & cleanliness assured.  
For a free quote call David 4356 1449 or  
0417 234 094. Yarramalong Local

**PEST CONTROL - Servicing the local area. A.T.S. Pest Control Services Phone Tony 4373 1157 Mob: 0427 731 157**

HORSE RUG REPAIRS - reliable prompt service. Pick-up & drop-off available for large quantities. Ph 0405 620 394

CERAMIC CLASSES & OPEN CERAMIC STUDIO (By appointment-Ph: 0411870090)

JOIN me in an unforgettable journey with clay & artistic exploration!! Reserve your spot today SIMPLY BOOK on foxeystudio.com or email me foxeystudio@gmail.com

LEVEL 2 QHHT Practitioner and Soul Speak Practitioner. Also offering:

- Group Regression Sessions
- Personalised dowsing sessions
- Pendulum dowsing classes
- Holistic Household Cleansing Consults
- Magna Carta 1215 group tutorials
- Crisis Counselling Phone Service

For enquiries call Sharyn on 0408 967 507, email to shazzaunitt@protonmail.com or visit [www.soul-speak-healing.com](http://www.soul-speak-healing.com)

**SMALL ACRE MOWING  
Excavation, Environmental  
Remediation 0412 228 718**

MISTY MOUNTAIN RURAL CONTRACTORS - Earthworks, Irrigation, all services available Ph 43530990 or 0418221495

### ALL COVERS & CANVAS WORK!

Boats, Vehicles & Horse floats re-trimmed, cover & horse rug repairs, no job too small!! Servicing the mountains & the valleys. Call Alan on 0414 993 669 or Louise on 0410 646 200. located at Yarramalong Road Wyong Creek.

# WATER BORES

Local drilling company  
based at Ourimbah

Contact: Paul Slade  
Ph/Txt: 0408 471247

email:  
Sladedrill@bigpond.com

## Your LOCAL GUY for Communications and Security

### BEFORE YOU ORDER STARLINK:

ONE MONTH FREE SAVE \$139.00.

Use the QR Code below.



### STARLINK:

1. Download the Starlink App and do the scan.
2. Call me.

### Multiple buildings:

WiFi link to multiple buildings, sheds etc, call for info.

### VAST Satellite TV:

We supply and also install

Master Security License:  
101264  
Open Cablers License:  
55883  
Insured PI & PL.  
Over 30 years In business.  
Techniport Pty Ltd T/A

**CLOUD SECURITY**  
Call WARREN 0407 366 444



Contractors Licence No: 367849C

# WATERMAN EXCAVATIONS PH: 0438 617 851

Mulching - Horse Arenas - Certified Fill

Sands - Soils - Mulches - Woodchips  
Gravels - Pebbles - Rotomill

Excavators - Tipplers - Grader - Dozer - Pozi Track - 6x6 Dump Truck

## CROSSROADS AUTOMOTIVES

Terry Kyriacou

Mon - Fri: 7:30am - 5:00pm

Saturday: 7:30am - 12:00pm

SPARE PARTS

LOG BOOK SERVICES

MECHANICAL REPAIRS

Ph: 4373 1774



Cnr of Wisemans Ferry Rd. & George Downes Drive, Central Mangrove

**AUTHORISED INSPECTION STATION (INCL LPG)**

## The Grass Cutters

- Slashing
- Rock picking
- Farm cleaning and clearing
- Cultivation and more
- Obligation-free quotes



Call 0419 412 993

Email pat@thegrasscuttersrus.com

See us in action at: [thegrasscuttersrus.com](http://thegrasscuttersrus.com)



# GIWS

GOSFORD IRRIGATION  
& WATER SOLUTIONS

- AGRICULTURE
- INDUSTRIAL
- DOMESTIC

Licence No - 269888C

**\*24 HOUR EMERGENCY CALLOUT SERVICE\***

Ph: 4322 3333

Fax: 43223433

Email: [sales@girrigation.com.au](mailto:sales@girrigation.com.au)

Web: [www.girrigation.com.au](http://www.girrigation.com.au)

Unit 2 254 Manns Road, West Gosford NSW 2250



## K&T PROPERTY CONSULTANTS PTY LTD

Real Estate Valuers & Land Economists

### ROBERT MEGGS FAPI CPV

providing independent property valuation advice, including:-

- Stamp Duty, CGT, GST & Retrospective Valuations
- Probate & Estate Valuations
- Insurance Valuations
- Valuations for Family Law
- Pre-Sale/Auction Advice
- Land Value & Compulsory Acquisition Valuations

500 Kyola Road  
KULNURA NSW 2250

Telephone (02) 4376 1451

Mobile 0429 44 33 10

Email: [ktpropty@ozemail.com.au](mailto:ktpropty@ozemail.com.au)

## Misty Mountain Rural Property Development Services



- agricultural consultants
- pasture improvement
- fertilizer spreading
- weed spraying
- all tractor work 4/2WD
- soil conditioning
- irrigation install/design
- fencing & stables
- crop planning & planting & all excavations
- concrete slabs Lic. R94321
- property evaluation & planning & management
- fork lift hire

Ex-Dept. Agriculture Officer with 45 years  
experience in the local district.

Greg Koutoulas is the man to call on 0418 221 495



## Stop Water Shop

Authorised Dealer

**ONGA, DAVEY and  
GRUNDFOS PUMPS**



## K. W. & M. E. WEST Pty. Ltd.

1650 Wisemans Ferry Road,  
Central Mangrove

Phone 4373 1164 Fax 4373 1049

## PUMP REPAIRS AND SERVICE

### Trading Hours

Mon - Fri

7.30 am - 5 pm

Sat 7.30 am - 12 noon

Closed Public Holidays