

COMMUNITY NEWS

No. 955 Ph: 4374 1039 Mo: 0412 669 649 Email: enquiries@cnews1.com.au Web: cnews1.com.au 15th November 2024

Men's Shed and the MMUC

The meeting held on the 1st of November to discuss the establishment of a Men's Shed on the Mountain was well attended.

The discussions covered the outcomes sought, establishment

of premises, workshops, venues, equipment, formation of a committee, funding, types of activities, support for community members and the idea of extension to a Community Shed and the

inclusion of women or not.

Further meetings will be held, the next at 6pm on 15/11/24 at the MMUC Hall.

The status of the MMUC was raised. The Mangrove Mountain Union Church is not in itself a religion, it is a property that is owned and managed by a Trust made up of community members. It is not owned by any particular religious group.

The Trust rents the buildings and grounds to users. The Church is shared by Christian denominations for the conduct of Services and the Hall used for various community activities.

Keith Aranjo
Secretary MMUC Trust.

ATTENTION OVER 50'S SMART PHONE USERS!!

Are you unsure how to use features on your phone or tablet?



Our Digital Connect sessions can teach you how to use your phone for many applications.

***** Topic for the month of November ***
Join us for our workshop as we explore travelling with your smartphone.**

As we head into the festive season, many of us are planning holidays and are not sure what is involved in staying safely connected to friends and family while away from home.

We'll discuss:

- What to think about before you leave
- Using your smartphone when travelling
- Data roaming and using Wifi
- Suggested apps to use
- Being scam aware

Sessions are held on 4th Thursday of the month.

Next session Thursday, November 28, 2024

9.30am - 11.30am

Mangrove Mountain Computer Club
6 Waratah Road, Mangrove Mountain
Enquiries - Suzanne 0412 298 126

PLEASE NOTE Digital Connect will be taking a break until February 2025.

November will be the last session for 2024 and we thank you for your support this year.

Stay safe over Christmas/New Year and enjoy the festive season with family and friends.

<https://digitalconnectcentralcoast.com.au>



DIGITAL CONNECT - Free workshops
for over 50's to develop skills and knowledge in the digital world.

LANDHOLDERS' ECOLOGICAL BURN WORKSHOP

This one is coming up on 27 November and rural landholders will be given first preference to attend this free workshop.

Location and details to be announced. Registrations will open on 13 November via the Community Environment Network's events pages - <https://cen.org.au/events>

Community Environment Network
PO Box 149, Ourimbah, NSW, 2258
4349 4756

The man who acts humble in order to win praise is guilty of the lowest form of pride.

Nachman of Breslov

STOP!

Next issue Published
6th December 2024

**** DEADLINE ****

**** 29th Nov '24 ****

Send adverts & copy by
email, website or post.
Email, website, FB or
phone for enquiries

Local Public Toilets set for Revamp

Central Coast Council has embarked on a program to renew the public toilets in the LGA.

In September 2024 Council released its Public Toilet Strategy Overview, a document that outlines the approach that has been taken

The brochure explains “Why a Public Toilet Strategy”:

Public toilets are vital community infrastructure that support the health and wellbeing of Central Coast residents, workers and visitors.

The Central Coast Council Public Toilet Strategy (Strategy) outlines a strategic approach to the provision of public toilets across the Central Coast Local Government Area (LGA) in community settings such as parks, reserves and town centres.

This Strategy aligns with other Council strategies and initiatives, including land use planning, pedestrian and bike route planning, playspaces and recreation planning, to create a cohesive approach to the provision of community infrastructure.

The brochure provides a snapshot of the proposed works outlined in the Strategy. It highlights Council’s

vision for contemporary, accessible and sustainable public toilets that meet the needs of the Central Coast community.

All new public toilets to be built by Council will be built considering the application of S.M.A.R.T principles:

- S: Siting + Placemaking features
 - Co-located with other facilities
 - Passive surveillance
 - Well-lit with multi-functional features to cater for community needs
- M: Multi-functional features
 - Accessible toilet is unisex with a nappy change table
 - External hand wash basin and bins
 - Other optional features such as bike and surfboard racks, outdoor showers
- A: Accessible + Inclusive features
 - Fully compliant
 - Potential for wider doors and larger internal space at beach sites to cater for beach wheelchair access
 - Potential for 24/7 smart CCTV
- R: Reliable + Sustainable features
 - Water and energy efficient measures such as rainwater tank, internal light sensors and solar
 - Durable design
- T: Technology features
 - Potential to implement auto-lock doors, a QR code for user

feedback and sensors to monitor utilisation

- Potential use of hybrid and prefabricated construction techniques

The following are some of the locations particular to the rural hinterland region:

Proposed New Toilet locations

- NGW03 - Fred Pinkstone Oval - Peats Ridge

Toilets to be Renewed or Renovated

- EGW01 - Somersby Public Toilets - Renovate
- EGW07 - Kariong Community Hall Public Toilets - Relocate - Type B
- EW08 - Kulnura Memorial Hall Public Toilets - Relocate - Type A

A member of the Mangrove Mountain & Districts Community Group initiated contact with Council over the sorry state of the Mangrove Mountain Public toilets, including the effluent leaks and these facilities have now been added to the renewal program.

Rather than a rebuild, the Mountain facilities are currently tagged for renovation with the installation of flushing toilets.

The decision to demolish the Kulnura toilets and rebuild them in a new location has been queried as the proposed facilities will be smaller.

UPCOMING CATTLE AUCTIONS

Maitland Regional Saleyards

- Weekly Monday Liveweight Cattle Sales 9am, followed by Calves, Pigs & Sheep from 12 noon.
- Monthly Store Cattle Sale Saturday Nov 16th from 11am.

Gloucester Saleyards

- Fortnightly Thursday Store Cattle Sale Nov 7th & Nov 21st from 11am

Feedlots - Abattoirs - Paddock to Paddock Sales
Clearing Sales - Rural Property Sales

Follow us on Facebook or join our e-list on
www.bowelidbury.com.au



Bowe & Lidbury Pty Ltd
(02) 49 327 066

MANGROVE MOUNTAIN PHARMACY



Monday - Friday: 9am-7pm
Saturday - Sunday: Closed

Free Shingles Vaccine
Now Available for over 65's
No Booking Required

- Free webster packing and all your pharmacy needs
- Vaccination
- Household goods and gifts
- Parcel point outlet

3/1 Waratah Road, Mangrove Mountain, NSW 2250
Phone: (02) 4374 1457 Fax: (02) 4374 1479
Email: mangrovetmparmacy@gmail.com

There is no definite indication of the type of toilet planned for Fred Pinkstone Oval but hopefully it won't be a drop-pit style.

In Yarramalong, the Jack Gear Reserve toilets have not been included in the program but Council has been asked if the toilets can be kept open during the day and only locked at night.

There are five options for permanent toilet facilities, four standard designs designated Type A, B, C and D, that are to be selected as appropriate and Type E which is a customised design.

- Type A: Local toilets (small/singular cubicle)
- Type B: District toilets (medium/3x cubicles)
- Type C: Regional toilets (large/5+ cubicles)
- Type D: Off-site (unsewered site) Subject to demand whether single accessible cubicle up to multiple cubicle units, (1 or 3+ formation).
- Type E: Custom toilets for key/ iconic sites

One significant issue is whether the Off-site facilities will use "drop pits", micro flushing or full flushing designs.

Drop pit designs are not user friendly, liable to produce a bad stench and more difficult to maintain. Full flushing toilets require larger quantities



PREMIER OUTDOOR

POWER EQUIPMENT

Your local **John Deere** dealer.
For all sales, service and after sales support.



JOHN DEERE

Pickup & Delivery available.

ALSO STOCKING:







www.premieroutdoor.com.au • 5 Alliance Ave Morrisset NSW 2264 • (02) 4973 3606

of water but micro-flushing toilets, as used in some National Parks camping sites, use very little water.

See the Council website for more information:
<https://www.centralcoast.nsw.gov.au/residents/accessibility-and-inclusion/accessible-public-facilities>

<https://www.centralcoast.nsw.gov.au/council/media-release/council-unveils-draft-public-toilet-strategy-community-input>

MEPCC AGM

The AGM for the Mangrove Emergency Planning and Communications Committee will be held on 15th January 2025, 7pm at Mangrove Mountain Hall All Welcome.

Enquiries by Email to mepccinc@gmail.com

K.Aranjo,
Secretary



Country Squire

c o l l e c t i o n

We are a local small business who specialise in custom-made timber items with personalised engraving.

We have something for everyone, ranging from Bridle Holders, Boot Jacks, Dog Lead Holders and our specialty - **PROPERTY SIGNS!!**







Check out our **Instagram** page [@Country_Squire_Collection](#)

Tel: 0439 079 221

Email: countrysquirecollections@outlook.com

From street parties and soccer to Storytime, The River Hub is thriving, with more room to grow

Swing past the community-run 'River Hub' on Point Road, Mooney Mooney, formerly Mooney Primary School, and it is commonly abuzz with activity – from children's playgroups to soccer games, songwriting classes, creative workshops and sometimes even street parties. And this thriving community hub has even more room in which to grow.

Mooney Mooney and Cheero Point's demographics are changing, too, with the area's already diverse community awash with families and their young children, who are embracing the wide range of community activities on offer at The River Hub – many of which are provided free of charge.

Member for Gosford, Liesl Tesch MP is delighted to see The River Hub community space, run by Mooney and Cheero Point Progress Association going from strength to strength.

"The work of the Mooney Cheero Progress Association and the Mooney/Cheero community at large should

be commended. The community has come together to transform the old school building and gardens into such a fantastic place that is helping people to connect with their local community."

"The River Hub is a commendable point of connection for people of all ages and walks of life, and best of all it's a free space."

Vidette Findlay is community coordinator at the River Hub. She says Spring at The River Hub is as busy and vibrant as ever.

"At The River Hub this Summer we will have free creative workshops teaching people how to tie-dye and make friendship bracelets. There will also be free drama workshops for adults and children and a garden party in our beautiful community-run garden."

Over Winter, young members of the Mooney/Cheero community took full advantage of sporting facilities at The River Hub.

"By far the most popular facilities we've provided for local kids have been the soccer nets and the basketball hoop," Vidette explained. These items were donated by members of the local community.

"Mooney Mooney is beautiful but it's a bit isolated, so I think it is important that we provide opportunities for young people in our community to get out there and make their own fun."

Ms Findlay is looking forward to the sound of live music soon emanating from the other venue, The Chapel.

"The Chapel provides a unique space in which to experience music. The Chapel is also providing a space for local musicians to rehearse and record their music.

"We've been so fortunate to have the opportunity to self-manage this important community space and we've been so well supported by our local community by way of fundraisers and volunteering. While we're able to cover our running costs we're aiming to continue to provide access to these facilities to not for profit community groups for free.

"Our aim is to get people coming into The River Hub to connect, create and regenerate. We want to hear from any groups or individuals who would like to use The River Hub to establish new activities with us. We're especially keen to get activities for young people."

A self-serve library with no late fees at the River Hub

Inside the former school cottage there is a self-serve library.

"Anyone can pop in and help themselves to books by writing it down in the "borrowing book" with their name and email address (once they are issued with a unique pin code)," says Vidette.

Mooney and Cheero Point Progress Association manages the building and the activities within it.

Dr. S. ANANDASIVAM

(ANAND)

MBBS, FRACGP, AMCC

For Doctor Appointments:
Monday - Friday 9am- 5pm

*Laverty Pathology Service
Available:*

*Monday to Friday 8:00 till 3:30
Saturday 8:30 till 12*

Medicare Bulk Billing

**1639 Nurses Road
Central Mangrove, 2250
02 4373 1914**



STORAWAY SELF STORAGE

- 15 Kangoo Rd. Somersby
Ph 4311 3685
- 30 Arizona Rd. Charmhaven
Ph 4306 4608

**Personal & Business Self
Storage Options**

www.storaway.com.au

**mention this ad for 50% off your
first 2 months storage fees**

MANGROVE MOUNTAIN AND DISTRICTS COMMUNITY GROUP

November Meeting held on Thursday, 7th November

Eleven community members met to discuss matters relating to our beautiful part of the world.

We are very pleased with how the Mangrove Mountain Farmers and Artisans markets are developing. The November markets broke the record with 50 stall holders and a

See what's happening at The River Hub by visiting the live activities calendar: <https://cheeropoint.nsw.au/community-facilities/river-hub/>

People interested in running activities at The River Hub are encouraged to contact the Mooney Cheero Progress Association and become a member. The MCPA meets on the first Tuesday of the month at 7pm. Membership is \$5.

Media Release from the Office of Liesl Tesch MP
Member for Gosford

good attendance. Positive feedback is especially pleasing.

Leaving a review on the Markets Facebook page is a good way of helping get more recognition. The reality of holding these monthly markets is that a small handful of people put in a huge effort to set up and clean up. Help is always needed as "many hands make light work", so please help if you can.

This community group (MM&DCG) will be having a stall at the next markets. We encourage all local community groups, across the whole district, to come and support this stall, and advertise what you do.

Our hall now has a photograph of King Charles.

We discussed how we would be involved in next year's Harvest Festival. It falls on the second weekend of June, so does not align with the Markets.

We are writing to Council to request an upgrade to the toilets in Waratah Road, near the hall at Mangrove Mountain. Council has already visited, and we are asking for the best possible outcome including flushing toilets, a non-slip ramp and facilities for parents as well as the disabled.

The committee is also liaising with Council to do work on the entry to Bloodtree Oval and the carpark as well as on the footpath and road shoulder on Waratah Road alongside The Hub. With many more visitors to the area,

this work is long overdue.

We have had a request regarding the speed limit on Peats Ridge Road, from the start of George Downes Drive, past the service station to Peats Ridge Public school. We agreed that this section should be a 60km speed zone. This section of road is very dangerous at 80kms, and we agreed that it is an accident waiting to happen. This is not helped by the large number of trucks that not only travel on the road, but park along it...greatly reducing visibility. We will be writing to Council and to the West Ward Councillors.

Our committee is also concerned with the number of trucks on our roads, and the large amount of fill being delivered... some on watercourses.

Do you have any concerns, or are aware of any repairs or maintenance that needs to be done? We would like to compile a list to present to Council so that they know of the works needed here.

This is YOUR community group. Please come along to our meetings and contribute.

We meet on the first Thursday of each month at the Mangrove Mountain Hall, at 7.30pm.

Our next meeting will be on 5th December, and we will be celebrating Christmas and the end of 2024. Do join us.

Poppe Zouroudis
Committee Member



Sustainable Natives
(wholesale production nursery)
94 Keighley Avenue, Somersby - Sales by appointment.
Contact Jonathan Steeds on 0415465162
jonathan@sustainablenatives.com.au
or Olga@sustainablenatives.com.au
web: www.sustainablenatives.com.au

We produce a large range of Australian Natives including local species. We supply retail nurseries, landscapers, bush regeneration projects, developers and local property owners with tubestock to semi advanced plants.
We offer a design (landscape architecture drawings)/consultation service for your property to add more natives to your landscape.

DURABILITY CONSTRUCTIONS & EXCAVATIONS PTY LTD
Lic: 228069C

Bricklaying - Blocklaying
Retaining Walls - Concreting
Renovation - Extensions - Repairs
Property Maintenance

Do you have a challenging problem?
Then call us.

M: 0450 639 524

Land Surveyors

Surveying the mountain and districts for 100 years. Detail, Boundary, Identification, Construction and Volumetric Surveys, Subdivisions and more.

For a free quotation call us on 02 4324 2566 or email us at admin@bannisterhunter.com.au



BANNISTER & HUNTER | 100 years
Surveying the Coast since 1924



Customised Landscapes & Earthworks
Qualified arborist
Roads & Driveways
Bushfire Hazard Reduction
Sports turf and artificial grass installation & repair
Free Quotes - Fully insured

Call Andre on 0478 417 229
Inthevalleyearthworks@hotmail.com



FROM OUR CHAIR

Dear PM, welcome to Copacabana

Why wouldn't the Prime Minister of Australia and his fiancée Jodie Hayden want to live in Copacabana surrounded by our magnificent and unique Coastal Open Space System (COSS)?

Our system of bushland reserves, unique to the Central Coast, was born out of the Rural Lands Study of 1975. Mr Albanese may not be aware that long-standing Labor State Member for Gosford, and then Gosford City Councillor, Brian McGowan (the man behind the bridge), along with the Liberal State Member for Gosford, former Mayor and Gosford City Councillor, Malcolm Brooks were both strong supporters of COSS.

The bipartisan support for COSS from both Mr Brooks and Mr McGowan continued with the Liberal State Member for Gosford, former Mayor and Gosford City Councillor, Chris Holstein and the current Labor State Member for Gosford, Liesl Tesch.

Another great supporter of COSS was local conservationist, Hawke Government Minister and Member for Robertson for 21 years, Barry Cohen.

I have written to the Prime Minister

inviting him and Jodie to become members of the Friends of COSS – The Community Environment Network's group dedicated to conserving and expanding COSS to the whole of the Central Coast.

The expansion and protection of COSS, perhaps as a regional park co-managed by community, Traditional Custodians, the National Parks and Wildlife Service and Central Coast Council, could make a positive and perpetual contribution to this region's climate resilience and ongoing biodiversity.

CEN is acutely aware of the need for more social and affordable housing but we do not believe increasing housing supply can be at the expense of nature. If regions like the Central Coast are to remain inhabitable and we are to avoid regional extinction of flora and fauna, we must conserve our bushland. COSS is the perfect vehicle for achieving such conservation.

I've informed Mr Albanese that COSS is a model that could be applied across Australia to complement our National Parks Estate.

CEN hopes Mr Albanese and Ms Hayden accept our invitation and follow in the footsteps of many other local residents, including Mr McGowan, Mr Brooks, Mr Cohen, Mr Holstein and Ms Tesch, by taking a strong and active interest in their local environment.

Gary Chestnut, Chair

Huge Turnout For Seniors' Forum In Gosford

Over 400 people from across the Central Coast participated in a seniors' forum organised by Federal Member for Robertson, Dr Gordon Reid MP, which included the Assistant Minister for Women, Social Security, and Ageing, The Hon. Kate Thwaites MP.

The Robertson Seniors' Forum, which took place on Tuesday October 22 at the Central Coast Leagues Club, included representatives from Services Australia and covered a range of services and support measures that the Federal Labor Government is providing to assist Australians with the cost of living.

The hour-long forum also provided the community with an opportunity to ask the Assistant Minister and Dr Reid questions about Services Australia and aged care.

If you were unable to attend the Robertson Seniors' Forum and would like the material that was provided on the day, contact Dr Reid's office on (02) 4322 2400 or email Gordon.Reid.MP@aph.gov.au

Media Release From The Office of
Dr Gordon Reid MP
Federal Member for Robertson



Mangrove Mountain

MEMORIAL CLUB & GOLF COURSE

WHATS ON WEEKLY

TUESDAY
BINGO from 11am
\$15 Pizza night

WEDNESDAY
MEAT RAFFLE drawn at 730pm
\$18 schnitzels

THURSDAY
MEMBERS BADGE DRAW - 730pm
\$22 steak night

FRIDAY
HAPPY HOUR 4-6pm
COCKTAIL HOUR 6-7pm
MEAT RAFFLE drawn at 730pm
New restaurant specials every week from 530pm

SATURDAY
POOL COMP from 630pm
entry fee \$5

SUNDAY
Sunday Roast - available all day

BECOME A MEMBER TODAY

MEMBER BENEFITS INCLUDE:

- discount on food and beverages
- loyalty rewards
- birthday vouchers
- more

1 YEAR FOR \$10

ADVERTISE YOUR BUSINESS HERE!

CHOOSE FROM

In house
Advertisement
All day 7 days
a week

In house
Advertisement
plus a golf cart
advertisement

FOR MORE INFORMATION & COST
CALL 4373 1129 OR EMAIL CEO@MMMCLUB.COM.AU

Live MUSIC

AT MMMC

WEDNESDAY

Barren Hilling Keys Band
Friday 12 November 11:00am

Don Woodham
Friday 12 November 1:00pm

Paul Bergapain
Friday 12 November 1:00pm

Open Fire
Friday 12 November 1:00pm

SATURDAY

Grandson Duff
Friday 12 November 11:00am

Paul Bergapain
Friday 12 November 1:00pm

Speak & the monkey
Friday 12 November 1:00pm

Barren Hilling Keys Band
Friday 12 November 1:00pm

MEMBERS XMAS

BILL BUSTER WIN 1 OF 4
\$250 EFTPOS GIFT CARDS

Gift Card

\$250

National acceptance of places to accept eftpos

MEMBERS PURCHASE A SCHOONER OF ANY TOOHEYS, XXXX, HAHN, JAMES SQUIRE OR STONE & WOOD PRODUCT TO ENTER THE DRAW FOR A CHANCE TO WIN

TOOHEYS

STONE & WOOD

XXXX

HAHN

SEE TERMS AND FULL TERMS AND CONDITIONS ON OUR WEBSITE WWW.MMMCLUB.COM.AU

Find Us On Facebook & Instagram - 18 Hallards Road, Central Mangrove, 2250 - 02 4373 1129 - www.mmmclub.com.au



EPiC Workshop
Emergency Preparedness in Community

Saturday November 30th
 9:00-1:00pm
 NSW SES Wyong Unit
 Levitt St Wyong

Connect with other women to learn how you can prepare yourself and your household for severe weather events.

Register via the QR code

 **SES** NSW STATE EMERGENCY SERVICE
 NSW SES Wyong Unit
www.ses.nsw.gov.au



SIGNIFICANCE OF REMEMBRANCE DAY

11am on 11 November is a time for us to stop and remember.

Originally known as Armistice Day, Remembrance Day marks the signing of the peace agreement between Germany and the Allies that ended the Great War of 1914-1918.

The Second World War began just 21 years later. Almost one million Australians served during that conflict, which lasted close to six years. Armistice Day was then renamed Remembrance Day.

Remembrance Day is now a day to remember and honour all Australians who have served.

Public commemorations are a vital way to continue the spirit of Remembrance Day each year and honour the memory of the men and women who have served and are currently serving.

Visit the RSL NSW website to learn more about the history and significance of the commemoration.

Antennas - Digital
 Hayward Video & Antenna Service
VAST Satellite Service
 "Government approved installer"

Ray Hayward
 mob: **0412 685 555**
 email: Ray.Hayward@gmail.com



OUTLAND Mechanical & Maintenance Service
 Licence No. MVRL54125 ABN 14814837840

Mobile Diesel Mechanic

- Specialising in Small Fleet Diesel Service
- Tractors • Farm Machinery • Mowers
- Earthmoving Machinery
- Welding

John: 0427 660 752 jlhellyer67@gmail.com



Kulnura Computers Supplies & Services
 4373 1237

- ❖ Custom Built Computer Systems for the Home - Office - Extreme Gaming
- ❖ Computer Repairs - Virus removal
- ❖ Upgrades
- ❖ Software - Accessories
- ❖ Electronic components

JEREMY AOUN
 PLUMBER | GAS FITTER | ROOFER

OVER 30 YEARS EXPERIENCE
 ALL YOUR RURAL PLUMBING NEEDS

Mobile: 0424 894 225
 Licence:134701C
 Email: aussieplumbing1@gmail.com



Weed Berries in flower arrangements

Local council weed officers in parts of Greater Sydney are noticing that floral arrangements with berries are becoming popular with reports of Cotoneaster, Ochna and Wild Tobacco stems being sold for flower arrangements.

Even though the regulations around the sale of foliage can be unclear, we can all do our bit to stop the risk of weeds being introduced to new areas via a bunch of flowers.

What can you do?

Report any foliage with berries being sold to your local council weed officer so they can investigate and advise on whether it can be sold in Greater Sydney.

Avoid purchasing arrangements you know are weeds or berries or have berries you cannot identify.

Don't dispose of arrangements with berries in your home garden or compost - place them in your green waste bin.

More information on what plants

INSECT NUMBERS IN DECLINE

Landcare update

Staff from Greater Sydney Landcare have recently noticed a decline in insects, including European and native bees, spiders and other bugs, in both urban and bushland areas. This will ultimately lead to a decline in native plant and food plant production and species, including birds that depend on insects and seeds.

A great way to protect the insects in your garden is to plant flowers that attract beneficial insects, such as beetles and lacewings, that will prey on the nasties.

Check out the factsheet "*5 Tips to Protect Pollinators from Pesticides*" for some great tips on how to protect pollinators from pesticides and

can be sold in NSW can be found in this factsheet:

"Selling plants? Protect your business or search for the weed at NSW WeedWise".

Local Land Services
Greater Sydney

the "*Alternate Pollinators*" video about ways to attract a range of pollinators to your property at www.centraltablelands.ils.nsw.gov.au

- Use Integrated Pest Management (IPM).
- Select less toxic options.
- Don't spray flowering plants when bees are foraging.
- Do not contaminate water
- Provide pollinator refuges away from active paddocks.

Greater Sydney Landcare is holding its Annual General Meeting online on Tuesday 26 November, from 4 pm and is keen for anyone working in the 'care' space to attend. Please RSVP by emailing chair@greatersydneylandcare.org, and they will send you a meeting link closer to the date.

A Landcare Day to celebrate Greater Sydney Landcare's 10th birthday is scheduled for Friday 22 November, in South Western Sydney. The day will allow you to learn about Greater Sydney Landcare projects from industry experts working in this part of Sydney. Please register to attend and check out the events section at the bottom of this newsletter for more details about this event.

Local Land Services
Greater Sydney

WARD Septics

Septic Tank Cleaning

- * New Vaccum Truck that can pump 100 metres away from tank.
- * Plumbers Jetter attached for clearing blockages in sewer pipes.
- * We now have a small Vaccum Truck for those tight difficult pump outs.
- * Water Tank Cleaning.

* And Even *Cheaper Rates*
For You With A Neighbour

Call Paul For More Info

0438 315 514

 SepticCleaning.com.au



Local Solar Power Experts

Living Off Grid
Has Never Been Easier

Brooklyn Trade Services are your local solar electricians, for both on and off-grid systems.

Our technicians are certified to install state-of-the-art solar and battery systems which are great for the environment as well as your home and or business.

Call us for a chat:

1300 319 419

www.btselectric.com.au/bts-energy



NEW HOME FOR PHOTOGRAPHIC GALLERY

PETER DENTON AUSTRALIAN LANDSCAPES

Exciting new Gallery now open in Somersby.

Many locals have visited the Gallery previously displayed in the home of Peter Denton over the last decade.

The new gallery building is located at the same address, but is decorated in black offering a striking contrast for the colourful prints. These are available for sale and there are also gift cards and one day photographic courses which can be purchased as gifts.

Years in the making, the project has been a true test of faith, but time has turned out a better vintage with some new additions soon to be completed.

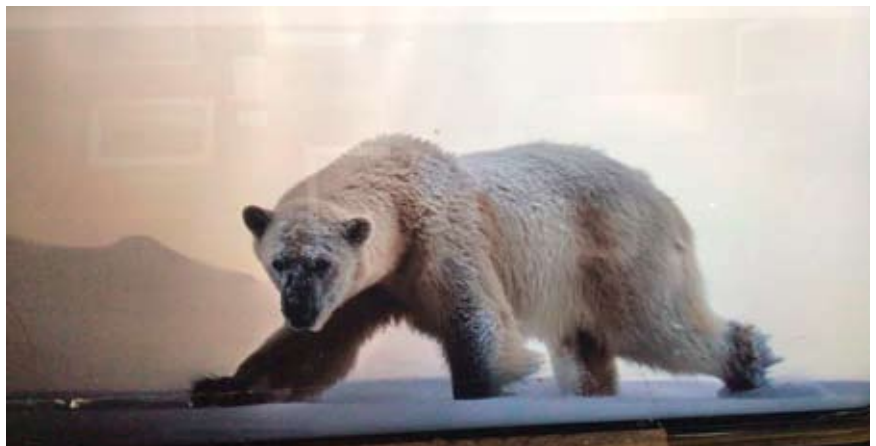
Currently exhibiting The Best of the High Country, Africa as well as some old and new favourites.

Peter Denton would like to thank the local community, Friends, Mangrove Produce And Hardware (best prices on fencing), Somersby Store, Lyon Technics (lighting & electrical)

OPEN Sat 9-4pm. Sun 1-4 pm.
87 Kilkenny Rd. Somersby.
Hoping to see you there soon!



www.peterdentonaustrianlandscapegallery.com.au



COMMUNITY EVENT SCHOOL FUNDRAISER
Somersby P&C association

Cinema Under the Stars
HOME ALONE 1

Somersby Public School Oval
840 Wisemans Ferry Rd, Somersby NSW 2250

7 p.m Friday
13th December

Enjoy a picnic dinner or relax
with friends.
Remember a picnic blanket,
chairs/cushions.
Sing along to some Christmas
carols and look out for a
special guest!!!!

8 p.m: MOVIE

Available for purchase - Glow Items, Book Stall (gold coin),
Freshly Popped Popcorn and Raffles!



PURCHASE ONLINE
<https://www.eventbookings.com/b/event/cinema-under-the-stars>

Adults \$12 (over 16)
Children \$8
Under 2 FREE

The Crossroads Garden

Dear community members,
I'm sure you have all seen the native garden that has been planted at the Crossroads, Central Mangrove.
This was an initiative of the Mountain Districts Association, using a "Stronger Communities" grant from State government and managed by Central Coast Council.

After community consultation, we aimed to build a beautiful, low maintenance native garden as a




HUNTER EARTHMOVING SERVICES

"4th Generation of Earthmoving on the Mountain"

**GENERAL EXCAVATIONS & CLEARING
DAM & CHANNEL CONSTRUCTION, REPAIR & CLEARING
PRIVATE ROAD/DRIVEWAY CONSTRUCTION & REPAIR**

- 20 TONNE EXCAVATORS
- 25 & 30 TONNE DUMP TRUCKS
- LONGREACH EXCAVATOR (16m)
- SKIDSTEER & ROLLERS
- 30 TONNE LOW LOADER, TRUCK & DOGS

ATTACHMENTS:
RANGE OF BUCKETS & AUGERS
GRAB - HAMMERS - RIPPER
PULVERISER - MULCHING HEAD
POWERRAKE - SLASHER

Wayne Hunter - 0431 761 338
E hunterearthmoving@bigpond.com

PAVE AWAY MOBILE SHOWROOM Lic. no. 192654C

We have a wide range of Stone Tiles and Pavers, Cladding and more, all in our Pave Away Mobile Showroom Truck

Say goodbye to long drives and showroom-hopping, let us deliver the ultimate retail experience straight to your door!

Check out all of our services online:
www.paveawaymobileshowroom.com

Daniel McDevitt - Owner operator
Ph 0409 033 375
daniel@paveawaymobileshowroom.com

Retail - Landscape Design - Landscape Construction




By Appointment only

welcoming gateway.

Our committee has been very disappointed with the results due to two reasons. Firstly, many of the plants have been stolen and secondly, the wet, hot weather has allowed weeds to thrive.

As you can see in the photos, the weeds were recently cut back and sprayed. However, they are growing back quickly.

I would like to sincerely thank the kind person that was seen spending hours weeding around the pretty daisies. Unfortunately we don't know who it was, but your work is very



much appreciated.

I am now asking for help in maintaining this garden. It will need a group of volunteers to meet regularly (say monthly) to keep the weeds under control. We can also discuss replacing the stolen plants.

If you are interested in being part of an ongoing maintenance team, please call me.

Poppe Zouroudis
0400105653



MANGROVE MOUNTAIN SINGERS

6pm till 8pm
1st and 3rd Tuesdays
of the month
Mangrove Mtn Hall

2 Waratah Rd (opp. The Hub)

Further info:
Kim 0401 516 501

CASUAL SINGALONG
LIKE KARAOKE
TO RECORDED MUSIC
BUT WITHOUT
MICROPHONES OR AUDIENCE

NO PRESSURE OR JUDGEMENT
ALL ABILITIES AND AGES
INSTRUMENTALISTS ALSO
WELCOME



Christmas

MEMORIAL SERVICE

Saturday 7th December 2024

Commencing at 10am

Hillside Chapel,

Palmdale Lawn Cemetery & Memorial Park
57 Palmdale Road, Palmdale NSW

We invite you to attend a beautiful memorial service with our community to offer comfort and to show that we do not grieve alone.

Our service will include: Music, song, a candle-lighting ceremony, a Christmas ornament with your loved one's name for you to take home and light refreshments to share.

We invite you to bring a framed photo of your loved one for display during the service.

For further details & RSVP please
phone 1300 130 955

PEATS RIDGE & DISTRICT CWA

On behalf of the members from our Branch I want to congratulate ALL the hard working volunteers from our wonderful community for making this

year's Country Fair a huge success. Everyone we came across was happy and friendly. As the Peats Ridge & District branch have worked tirelessly, since the Country Fair commenced, we have done our utmost to please and accommodate everyone we come in contact with.

Without volunteers nothing gets done and when it comes for the community CWA are always there.

And now for my report:

On Monday 21st October we held our AGM and there are a few position changes.

Our new President is Donna who has the Cookery position as well.

Julianne is our new Secretary.

Kaye is the Minutes Secretary as well as the Ag & Environment Officer.



Photos show our happy group also the past and the new President's with our Chairperson Beverley from Lisarow/ Ourimbah Branch.



MOUNTAIN TOP TRANSPORT

Call PETER on 0422 082 764
for all your market transport needs

Sydney markets daily



AGRICULTURE • COMMERCIAL • RURAL • INDUSTRIAL

Australia's Leading Water Solutions Network

- ◆ Water Treatment
- ◆ Irrigation Systems
- ◆ Mowers & Ride-Ons
- ◆ Fire Protection Systems
- ◆ Water Tanks
- ◆ Pump Systems
- ◆ Fertigation
- ◆ Pipes & Fittings
- ◆ Chainsaws & Generators
- ◆ Repairs

Ph 4373 1466
780 Peats Ridge Road, Peats Ridge

www.thinkwatercentralcoast.com.au

CUSTOM DESIGN | BUILDINGS | EXTENSIONS | ALTERATIONS | DECKS |   



0410 100 616 | kim@kdfconstruction.com.au | LIC NO. 267735C

Our Branch Patron, Miranda, is also our VP and the Handicraft Officer.

Margaret is our International officer and carries this out with a passion. This year's Country of study is the Republic of Korea.

Margie has also a passion as the Culture Officer.

I remain the Treasurer and Publicity officer.

We are 9 happy members and 4 juniors as well.

Our Branch continues with great enthusiasm and with CWA sisterhood. We meet the 3rd Monday of the month at the Community Hall at Peats Ridge Public School.

Till next time, take care.

*Christine Sanfilippo,
Publicity Officer*

Mangrove Mountain Union Church Trust AGM

On 16th December, 2024, at the MMUC Hall, a short committee meeting will be held at 7.30 followed by the AGM.

Members will need to be financial in order to vote.

Completed nomination forms must be submitted to the Secretary no later than 7 days prior to the AGM. Forms can be posted to 52 Meriki Rd, Mangrove Mountain, NSW 2250 or emailed to MMUCSecretary@outlook.com

Please email MMUCSecretary@outlook.com or phone 0412669649 if you have any questions.



Beauty,
Cosmetic Tattooing,
Eyelash Extensions
& Makeup

Salon service & Mobile

0437 016 592
Instagram: @golden_beauty_bar_au



LR to HC Licences

Paul Viola: 0481 409 309

ABN: 36 659 041 880
info@coastaltrucklicences.com.au
Coastal Truck Licences



Specializing in the building of chicken sheds

Charlie Muscat is well known in the Industry, with over 12 years experience and has a reputation for quality workmanship.

- * New Chicken Sheds * Tunnel Conversions * Roofing
- * Machinery/Farm Sheds/Stables/Lofts/Piggeries * Coolrooms
- * All Fabricating services - All frames & trusses are fabricated by On The Go Constructions to Engineer specifications.

Call Charlie on 4374 1114 or 0408 684 719

VISION FOR LIFE...
For all your concrete & pumping services, call Louis on 0418 409 576

FABIAN FARM

Cell Grown Seedlings

**"OUR SEEDLINGS ARE SECOND TO NONE
THERE IS NO SECOND CHOICE"**



OVER 50 YEARS GROWING EXPERIENCE
Elwyn and Dallas Fabian

**Office: 02 4374 1281
Fax: 02 4374 1011
Elwyn: 0418 432 477
Dallas: 0417 285 047**

191 Waratah Road, Mangrove Mountain, 2250



EXCAVATION & TRUCK TIPPER HIRE

Services:

- Site Levelling
- Land Clearing
- Horse Arenas
- Roadways
- Certified Fill Material

Machines:

- Excavators / Augers
- Posi Track with Laser Level Grader
- Dozer
- Truck & Trailer Tippers

**Michael Schembri
0419 236 788**

Follow us  

Building belonging for Central Coast youth through artistic and creative participation

Assistant Minister for Social Security, Ageing and Women, Kate Thwaites, and Federal Member for Robertson, Dr Gordon Reid, today met with the FunHaus Factory in Gosford to hear firsthand about the YAAS – Young, Authentic and Social – arts and culture pilot project for local youth.

FunHaus Factory have received \$538,572 through the Strong and

Resilient Communities (SARC) program, which is supporting young people across Australia through community-based projects that encourage greater social participation and reduce isolation.

The project supports young people in the Central Coast to overcome isolation, encourage participation, develop personal skills and build a sense

of belonging through participatory opportunities in creative and inclusive contemporary workshops, events, performances, and celebrations.

Assistant Minister Thwaites said, “The Albanese Labor Government is proud to support the FunHaus Factory to deliver the YAAS – Young, Authentic and Social – program right here in Gosford.

“Organisations like FunHaus Factory do great work in their local communities, supporting young people to get involved and build a sense of belonging in their community. That’s why our Government has invested close to \$45 million in supporting strong and resilient communities since 2022.”

Dr Gordon Reid MP said, “The FunHaus Factory do amazing work supporting our Central Coast youth, and I look forward to this new round of funding helping even more people in our region thrive.

Creative Director, Glitta Supernova adding “YAAS! (Young, Authentic, and Social) is today a nationally acclaimed, innovative award-winning youth program that owes its existence to vital federal support. This backing has empowered marginalized youth on the Central Coast through ongoing creative and community-focused



OPEN 7 DAYS
40 YEARS LOCAL

VC DENTAL
Care For Life

ACCREDITED

General Dentistry | Emergency Care | Cosmetic Dentistry
Orthodontics & Invisalign | Dental Implants | Oral Surgery
Sleep Dentistry IV Sedation | Wisdom Teeth Removal
3D CT Scanning | CEREC same-day ceramic restorations

02 4323 1933 | www.vcdental.com.au
Suite 10, 36-40 Victoria Street, East Gosford NSW 2250

NEW PATIENTS

- Comprehensive checkup & clean Includes up to 5 x-rays
- No Gap (with health insurance) or \$290

OFFERS (all patients)

- Free orthodontic consultation
- Free dental implant consultation
- Free cosmetic makeover consultation
- Sport mouthguards: No Gap or \$99

FINANCE

- We bulk bill the Medicare CDBS
- Zip Pay & Zip Money payment plans
- We partner with SuperCare



Mangrove Mountain MEMORIAL CLUB & GOLF COURSE

WHATS ON WEEKLY

TUESDAY
BINGO from 11am
\$15 Pizza night

WEDNESDAY
MEAT RAFFLE drawn at 730pm
\$18 schnitzels

THURSDAY
MEMBERS BADGE DRAW - 730pm
\$22 steak night

FRIDAY
HAPPY HOUR 4-6pm
COCKTAIL HOUR 6-7pm
MEAT RAFFLE drawn at 730pm
New restaurant specials every week from 530pm

SATURDAY
POOL COMP from 630pm
entry fee \$5

SUNDAY
Sunday Roast - available all day

BECOME A MEMBER TODAY

MEMBER BENEFITS INCLUDE:

- discount on food and beverages
- loyalty rewards
- birthday vouchers
- ... and more

1 YEAR FOR \$10

ADVERTISE YOUR BUSINESS HERE!

CHOOSE FROM

- In house Advertisement All day 7 days a week
- In house Advertisement plus a golf cart advertisement

FOR MORE INFORMATION & COST
CALL 4373 1129 OR EMAIL CEO@MMMCLUB.COM.AU

Live MUSIC AT MMMC

ROCKERS

- Burton Halliday Keys Band (Wed, 12 November 11:30am)
- Paul Woodham (Wed, 12 November 1:30pm)
- Paul Bergapain (Wed, 12 November 1:30pm)
- Open Fire (Wed, 12 November 1:30pm)

SOULERS

- Brandon Huff (Wed, 12 November 1:30pm)
- Paul Bergapain (Wed, 12 November 1:30pm)
- Speak & the monkey (Wed, 12 November 1:30pm)
- Burton Halliday Keys Band (Wed, 12 November 1:30pm)

MEMBERS XMAS BILL BUSTER WIN 1 OF 4 \$250 EFTPOS GIFT CARDS

MEMBERS PURCHASE A SCHOONER OF ANY TOOHEYS, XXXX, HAHN, JAMES SQUIRE OR STONE & WOOD PRODUCT TO ENTER THE DRAW FOR A CHANCE TO WIN

Gift Card \$250

TOOHEYS SPARE TUBS XXXX HAHN

SEE YOUR NEAREST STORE FOR MORE INFORMATION
www.mmmclub.com.au

Find Us On Facebook & Instagram - 18 Hallards Road, Central Mangrove, 2250 - 02 4373 1129 - www.mmmclub.com.au

initiatives.

Since its launch, YAAS! has expanded across the coast, directly impacting hundreds of young people and enabling partnering across multiple schools and leading organisations. Primarily serving youth aged 12-17 whom identify as LGBTQIA+, First Nations, living with disabilities. YAAS! has fostered game changing measurable and meaningful impacts across youth confidence, community connection, and overall wellbeing.

This ongoing government support ensures that marginalised young regional people can thrive, have safe spaces, build real friendships, and gain life-long resilience skills, ultimately we are together creating a more inclusive and vibrant future for Central Coast youth to succeed either locally or globally as valued, confident participants in society."

Minister for Social Services Amanda Rishworth said "Our Government is committed to building strong and resilient communities, and to helping Australians who need a little extra support," Minister Rishworth said.

"To build stronger and more resilient communities we need to invest where there is the most need and the opportunity to make the biggest difference to the future of community members."

"We know that the successful organisations are well placed to help some of our most vulnerable, including young people, people with disability, unemployed people, First Nations Australians and women."

The funding builds on the Labor Government's record to help Australians doing it tough when they need it most, including:

- providing every Australian taxpayer a tax cut
- increasing Commonwealth Rent Assistance for nearly one million households
- boosting funding for emergency and food relief services, along with financial counselling
- extending the freeze on deeming

CENTRAL MANGROVE PUBLIC SCHOOL

2025 Kindergarten

Enrol today to ensure you are kept up to date with all our upcoming transition to primary school information and sessions

ENROL NOW ONLINE

A GREAT PLACE TO LEARN AND GROW

Scan to complete your online enrolment

02 4373 1156 CENTMANGRO-P.SCHOOL@DET.NSW.EDU.AU

Small class sizes

25 acres of beautiful bushland

Inclusive education and support

Use of award winning evidence-based programs

Gardening Club, Kid's Kitchen and large covered outdoor learning areas

rates for 876,000 income support recipients.

More information about the SARC Activity is available on the Department of Social Services website.

Media Release from the Offices of
The Hon Kate Thwaites MP
Assistant Minister for Social Security,
Ageing and Women
Dr Gordon Reid MP
Member for Robertson

MAINLINE BATHROOM RENOVATIONS
Lic: L2101

We supply all licenced, qualified trades required to complete your bathroom renovation

Steve Karczmarz
0419 999 054
steve@stevembr.com
www.mainlinebathroomrenovations.com

ALL ASPECTS OF TREE WORK

- Truck & Chipper
- Cherry Picker
- Excavator
- Forestry Mower

Local Arborist, friendly & experienced team. Insured

Tim - **0412 985 422** or tijanotreeco@gmail.com

WEED TO WATCH

Tobacco bush (*Solanum mauritianum*)

Tobacco bush is a shrub or small tree with large, hairy leaves. It is poisonous to livestock and humans.

How does this weed affect you?

- Tobacco bush grows quickly and:
- can out-compete native vegetation
 - is a weed in plantations (e.g. macadamias and bananas)
 - hosts fruit fly
 - is toxic to livestock and humans if eaten in sufficient quantities.

What does it look like?

Tobacco bush is a shrub or small tree that can grow to 4 m tall. Plants can flower and fruit in their first year.

Leaves are:

- yellowish-green above and greyish underneath
- densely hairy on both sides
- 9–30 cm long and 3.5–14 cm wide
- tapered at both ends
- on short, thick stalks
- strongly scented and smell like diesel fuel when crushed.

At the base of most larger leaves there are 1 or 2 small, stalkless leaves that are 5–20 mm long.

Flowers are:

- violet, bluish or purplish with bright yellow centres
- 15–25 mm wide



- star shaped with 5 petals
- in compact clusters at the ends of branches
- mostly present from autumn to spring but can be present anytime.

Fruit are:

- round
- 10–15 mm in diameter
- green when young
- dull yellow when ripe with 150–200 seeds.

Seeds are:

- light brown or yellowish
- 1.5–2 mm long.



Stems are:

- grey-green
- sometimes covered in small white hairs
- up to 15 cm in diameter.

Where is it found?

Tobacco bush grows along the coast of NSW from the North Coast to Aurelean in the South East. It has also



**AB ENVIRO
TREE SERVICES**

Local
Qualified and Insured Arborist
Felling, pruning, deadwooding
Free Quotes

Contact Asher 0481 353 982
abenvirotrees@gmail.com

PRINTING SERVICES

Lynwood Press
Your local printing service

∞ Flyers

∞ Booklets

∞ Stationery

∞ Business Cards

∞ Graphic Design

∞ Duplicate Books

Publishers of the "Community News"

Ph/Fax: 4374 1039 Mob: 0412 669 649
Email: enquiries@cnews1.com.au

Peats Ridge AUTO ELECTRICS

Stephen Andrews Lic. No.: MVRL22840

Est 1981

- Electrical Repairs
- Starter Motors & Alternators
- Lighting
- Electric Brake Controls
- Dual Batteries

- Cars
- 4WD
- SUV
- Agricultural Machinery
- Caravans
- Horse Floats

Plus an extensive range of parts and accessories in stock

We stock quality **Century Batteries** made in Australia for local conditions



All your battery needs at very competitive prices

Ph: 4373 1137

1160 Peats Ridge Rd, Peats Ridge 2250

been found in the Murray Region. It grows in disturbed areas and is a weed in pastures, plantations (macadamias) and bushland. It is often found growing on the edges of rainforests.

How does it spread?

By seed: Mature plants can produce 100 000 to 200 000 seeds per year. Most seeds are still viable after one year and some seeds may still be viable after several years. Birds and flying foxes eat the ripe fruit and spread the seed. Seed from plants growing along watercourses can be spread by water.

By plant parts: Tobacco bush can grow from damaged stems and from root pieces.

Control

Successful weed control relies on follow up after the initial efforts. This means looking for and killing regrowth or new seedlings. Using a combination of control methods is usually more successful.

- control mature plants to reduce seed production
- look for and control young plants before they flower.
- use manual or chemical methods

Disposal:

Contact your local council for appropriate disposal methods.

For more information check <https://weeds.dpi.nsw.gov.au/Weeds/TobaccoBush>

NSW DPI
Weedwise

SATURDAY CRAFT GROUP

Meeting on the 2nd Saturday of each month (10am -2pm)

Ladies from the CWA in conjunction with the Community Hall in SOMERSBY

SPINNING

BOBBIN LACE

NEEDLE FELTING

ANY CRAFT WELCOME

Contact Carmen 0434071305

MANGROVE PRODUCE AND HARDWARE

1668 Wisemans Ferry Rd, Central Mangrove (just 1km from the Crossroads)

NEW SEASON PRIME LUCERNE HAY \$24.95

CHEAPER GRADES ALSO AVAILABLE

NEW SEASON OATEN HAY

BACK IN STOCK \$19.95

TEFF AND RHODES HAY ALSO AVAILABLE

- ◆ Horse Feed
- ◆ Pet Food
- ◆ Bird Seed
- ◆ Vet Supplies
- ◆ Chemicals
- ◆ Fertiliser
- ◆ Timber
- ◆ Hardware
- ◆ Hand Tools
- ◆ Power Tools
- ◆ Paint
- ◆ Plumbing
- ◆ Fencing
- ◆ Electric Fencing

Mon-Fri: 7:30am -5:00pm

Sat: 8:00am -2:00pm

Ph: 43731259

SHOP ONLINE AT
www.tuckersstore.com.au
or shop.truevalue.com.au





Funding Boost To Keep Water Ways Healthy

The NSW Government has delivered on its pledge to invest \$800,000 to empower communities to monitor and improve the health of local waterways through the Waterwatch Citizen Science program.

“This funding will create the opportunity to set up 70 new citizen science groups throughout NSW over the next four years,” said program coordinator, Ms Rachael Kneeves. “The funding will be used to expand the successful Waterwatch program outside of the Greater Sydney region including on the Central Coast.

“This is an excellent opportunity to empower current and future generations to get actively involved in the sustainable use and management of local catchments,” she said. “We will engage communities and educate them about the importance of their waterways.

“Groups will be trained and supported to regularly collect high-quality data. The program will empower volunteers to conduct biological and habitat assessments as well as physical and chemical water tests.

“Healthy local waterways are essential for native wildlife, Aboriginal cultural heritage, local communities, and a diverse range of industries. Everyone benefits when our waterways are healthy.

“Involvement will also have benefits for the wellbeing of the volunteers by improving social cohesion, combatting isolation and encouraging individuals and groups to spend more time in nature.

“By regularly visiting your local waterway with a group of like-minded people, taking a sample of the water, running some basic tests, and uploading this information to a publicly accessible database, you can contribute to environmental research and conservation.

“This is citizen science in action. It means that when something weird happens in your local creek, you can contact the authorities with the evidence that they need to act. You can play a meaningful role in keeping your local waterways healthy.”

As groups upload their quality-assured monitoring results the community and the NSW Government will be able to access the data to monitor events and detect trends over time.

The citizen science projects will be implemented by the Community Environment Network in collaboration with the Greater Sydney Landcare

OPPORTUNITY TO BE PART OF THE 2025 HARVEST FESTIVAL PROGRAM!

It’s time for local farmers, businesses and event organisers to express their interest in being part of Central Coast Council’s 2025 Harvest Festival - one of the largest and most successful

Network. This project has been assisted by the NSW Government through funding from the Department of Climate Change, Energy, the Environment and Water.

All residents are encouraged get involved. More information is available online:

Waterwatch: <https://www.nswwaterwatch.org.au/>

Or contact Rachael Kneeves via (02) 4349 4757 or waterwatch@cen.org.au

Community Environment Network
PO Box 149, Ourimbah, NSW, 2258
4349 4756



- Excavator with Buckets, Hammer, Auger & grabs.
- Posi track with 4in1 bucket, forks & spreader bar
- Tipper 6 ton • Posi track slashing

Excavation - Concrete - Landscape


Facebook, Instagram
Email: blissearthworx@gmail.com
▲ Based in Somersby ▲

0409 456 003

SOLICITORS & ATTORNEYS

Solving Coastal and Mountain legal problems effectively and efficiently for over 27 years

- * Conveyancing
- * Wills & Probate
- * Work Place Insurance Claims
- * Personal Injury Insurance Claims



NSW Law Society Accredited Specialists

98 Mann Street, Gosford Tel: 4322 6666
25 Alison Road, Wyong Tel: 4353 1248



Dr. Robin Crisman & the SAH veterinary team
79-b Howes Road, Somersby

- A full service, purpose built veterinary hospital.
- Large and small animal consults incl. horse repro.
 - House and farm visits.

Call us on: 4372 1799
www.sahvet.com.au
visit us on Facebook

ROAD BASE AND DRAINAGE AGGREGATE

Ex Yard or Available For Delivery

Please call Jake 0409923155 for a free quote

events on the Central Coast!

Council Director of Community and Recreation Services, Melanie Smith is hoping to provide our community and visitors with a diverse Festival calendar for 2025 with a range of unique events and activities.

“The Harvest Festival event highlights and supports the Central Coast Hinterland, rural farming communities, and showcases the gorgeous heritage villages through the delivery of lively event hubs” Ms Smith said.

“Its popularity grows each year and attracts thousands of people to our region’s hinterland from near and far. This year’s Festival presented a range of unique events and experiences across thirty event hubs and drew an estimated 51,000 attendees over the long weekend, resulting in an economic boost of \$6.1 million for our region.

“It’s a great opportunity for local businesses, companies, organisations or community groups to create their own event hub to showcase the hinterland environment, indigenous and cultural heritage, local produce, industry, arts, culture or communities through a variety of experiences or activities.

“I encourage any local farmers, businesses, organisations, or community groups located in the Hinterland to submit their interest by 22 November 2024 to be a part of the

Harvest Festival program on 7 and 8 June 2025.”

Event hub experiences or event ideas may include:

- Farm open days, tours or talks
- Pick your own produce
- Food experiences with local produce, cooking demonstrations or local dining events
- Indigenous Cultural experiences/ bush tucker tours
- Cinema under the stars
- Art events / installations
- Live music and entertainment events
- Family fun events
- Markets
- Obstacle course races or fun runs
- Other experiences, activities or events that showcase the hinterland and its culture

Council Mayor, Lawrie McKinna said that the annual Harvest Festival is one of the most successful community events in the region.

“Presented by Council, Harvest Festival comes together due to the collaborative efforts of many Event Hub Partners who organise unique experiences, tours, events and activities for the local community,” Mayor McKinna said.

“Each year, the event showcases our spectacular hinterland communities, as well as our beautiful local produce, unique venues and fun experiences.



OUR SERVICES INCLUDE:

Custom built homes • Granny flats
Extensions • Carpentry services
Renovations • Decks & Pergolas
Waterproofing & Bathroom renovations
Disabled modifications
Asbestos removal
Building maintenance

Dane Meredith | Builder
0420906499
dane@ebhbuilding.com.au

“I wholeheartedly encourage previous partners and all interested local farmers, businesses and community groups to submit their expressions of interest to be part of next year’s Harvest Festival.”

Expressions of Interest to participate in the 2025 Harvest Festival must be submitted online by 2pm, 22 November 2024. Search ‘Harvest Festival EOI’ at centralcoast.nsw.gov.au for more information.

Central Coast Council
Media Release

Horse Vet
Somersby - Mangrove & Central Coast area



Brett Warren
Mobile: 0428 215 599
Home: 4374 1640

Email: brettvet@ozemail.com.au
www.centralcoastequine.com.au

Consultations by appointment
Mobile X-ray, endoscopy, purchase and insurance exams

CNS Electrical
Lic No. 214132C



Your local Electrical Contractors on the mountain, specialising in Rural, Domestic, Commercial and Industrial works, including:
Excavation, Trenching, Mains & Sub-mains, Voltage Calculations & Future Planning.

Call Cameron for a quote on: 0438 695 600
Office: 0480 467 894
Email: admin@cnsselectrical.com.au

Better Health Practices
Kariang Chiropractic & Wellness Centre

20 Langford Drive,
KARIONG

4340 5154

Chiropractic Massage
Health Coach Acupuncture
Counsellor Podiatrist

HICAPS available
Medicare EPC & Workers Comp accepted
After hours appointments available

Like us on social media for the latest clinic news



Caring for Kariang & the Mountain District for over 20yrs.

REGULAR ACTIVITIES & MEETINGS

RURAL FIRE SERVICES

Bucketty RFS	Weekend Training Station Maintenance General Meeting	3rd Sat, 9am-12 pm, breakfast 8.30am Every Thurs as required, generally 10am-1pm 3rd Sat in even months, at 1pm, All welcome bucketty@lowerhunterffrs.com.au 4998 8130
Calga-Mt. White RFS	General meeting Training Information & updates Contact	3rd Mon of the month, 7.30pm all welcome Every Monday 6.30 except public holidays Facebook.com/calga/mtwhiteruralfirebrigade/ Captain.calgamwhite@ccrfs.org.au - Zack Winslade.
Kulnura VBFB at Greta Rd Station	General meeting Training	1st Wednesday of the month, 7.30pm 3rd Wednesday of the month 7.00pm
Mangrove Mountain RFS Bloodtree Rd	General Meeting Training / Maintenance	Last Wednesday of the month, 7 pm, All Wednesday's except last of month, 7 pm
Spencer RFS	General Meeting Training Maintenance	2nd Monday of the month Meeting 6.30pm 3rd Monday 6:30pm 4th Monday 6:30pm E: captain-Spencer-vol@rfs.nsw.gov.au 0415 668953. 4778 Wisemans Ferry Rd
Somersby RFS	General Meeting Training/Maintenance	First Wed of the month 7.30pm at the Station Every Wed night 7.30 at the Station (except before Wed general meeting)
Yarramalong RFS		Information: www.facebook.com/ YarramalongRuralFireBrigade/ Phone contacts: 0406 360588 or 0418 280764 Email: volunteer@yarramalongrfs.org.au

COMMUNITY & SOCIAL

Central Coast Plateau Chamber of Commerce Coastlink Friendship Group	First Tuesday each month 7.00PM MMMC Wed 9.30am-2pm at the Health Centre, Nurses Rd, Central Mangrove
Country Women's Association (Somersby)	Second Wed of each month, at Somersby Hall Wiseman's Ferry Road, Somersby, contact Sue, 43721280 or 0407768000.
Country Women's Association (Peats Ridge & District)	Third Monday of the month at Community Hall, Peats Ridge School. Any enquiries please contact Christine 0419 400163.
Country Women's Association (Mangrove Mountain Evening Branch)	2nd & 4th Tues of the month, 4-8pm at Mangrove Mtn Union Church, 2154 Wisemans Ferry Rd, MMtn. General meeting 6pm 2nd Tues. Ph Judy 43771728
Gosford North Inner Wheel club	2nd Wed each month 11am at Phillip House in Kariong. Contact: Glenis Ph: 0400 486 760
Kulnura & District Garden Club	Second Monday, 9.30 for 10am start. Jacqui Maxwell 0455364262 kulnuradge@gmail.com
Kulnura Tuesday Tennis	Tue 9.30am-12.30pm, Kulnura Tennis Courts. Enquiries: Alison Palmer 0427731548.
Ladies of the Valley Afternoon Tea	1st Tues, 1pm to 2.30 at Angels Sussurri Cafe Yarramalong. Margaret Dale 0411104770
Mangrove Mountain Singers	1st & 3rd Tue, Mangrove Mtn Hall, 6-8pm Contact Kim & Leila 0401516501
Mangrove Mountain & Districts Community Group Meeting	1st Thurs of the Month, 7.30pm, Mangrove Mtn Hall.
Mangrove Emergency Planning & Communications Committee	Contact: mepccinc@gmail.com, 0412669649
Mangrove Mountain Country Fair Committee Meeting	3rd Thu of mth except Jan, 7pm, at The Hub of Mangrove Mtn. Pres- Shane 0417 436 529
Mountain Districts Association (MDA)	www.mountaindistrictsassociation.com.au secretary@mountaindistrictsassociation.com.au
Mountain District Football Club Meeting	Second Tuesday of the Month 6.30pm at the Mangrove Memorial Club
Probus - West Gosford	2nd Thu. Ph Elaine Burrows 0412988353
River Cares for the Lower Hawkesbury River District	President Marlee Maxwell Email rivercaresinc@gmail.com
Rotary Club Meeting	Friday 7.15am at Phillip House. 43404529
Spencer Community Progress Group Inc	President Brad Maisey, Community Meetings, 4377 1167, spencercpg2@gmail.com
Spencer Community Ladies Social Club	Last Fri of month. 12.00 noon Spencer Community Centre, Jennifer Dayes 4377 1364 Articles to: spencercpg2@gmail.com
Wisemans Ferry Community Men's Shed	Tues & Sat, 9am-5pm. Contact: Alan Hunt 4566 4626 or Adrian Acheson 0448 833 781

SPIRITUAL

Anglican Service - Mountain Districts	Every Sun 8am at Peats Ridge Scout Hall, Sunday School during school terms
Mangrove Mountain Union Church Trust	Committee Meeting 3rd Monday, 7.30pm at the Mangrove Mountain Union Church Hall
Mangrove Mountain Christian Service	9.30am second and fourth Sundays. Mangrove Mountain Union Church, cnr Bloodtree Rd & Wisemans Ferry Rd

(cont'd next page)

LIVESTOCK MARKET REPORT



Maitland Liveweight Cattle Sale 4th November 2024

460 cattle yarded today at maitland.
430 trade/yearling cattle and 30
export.

- Trade job was firm to easier. Export
job was firm.
- Restocker steers up to 250kg made
315c/kg to 410c/kg
- 250kg-300kg made 310c/kg to 405c/
kg
- 300kg to 380kg made 315c/kg to
398c/kg
- Restocker Heifers up to 250kg made
220c/kg to 330c/kg
- 250kg-300kg made 230c/kg to 315c/
kg
- 300kg-380kg made 220c/kg to 310c/
kg
- Yearling Steers to Feed made 310c/
kg to 374c/kg
- Yearling Heifers to Feed made 290c/
kg to 330c/kg
- Butcher Vealers made 330c/kg to
360c/kg
- Cows Made 215c/kg to 280c/kg
- Bulls made 200c/kg to 240c/kg

A friendly reminder that we are often
in the area seeing clients and looking
at their livestock and if you would like
us to call in be sure to give us a call.

Like and share our Facebook page!
Keep up to date with [bowelidbury.com.au](http://www.bowelidbury.com.au)

Michael Easy & Rodney McDonald
Bowe & Lidbury
52 Kyle Street, Rutherford NSW 2320
P: 02 4932 7066

Fee-Free TAFE is Here to Stay With Labor

The Federal Labor Government will introduce legislation to establish Fee-Free TAFE as an enduring feature of the national vocational education and training system, funding 100,000 Fee-Free TAFE places a year from 2027.

This builds on the Federal Labor Government partnership with states and territories to deliver 180,000 Fee-Free TAFE places in 2023; 300,000 places over three years from 2024; and agreements being finalised for a further 20,000 construction and housing Fee-Free places.

Fee-Free TAFE started in January 2023 to 30 June 2024 and has exceeded all expectations – with more than 508,000 enrolments in courses in priority areas, including:

- 131,000 in care – including disability and aged care
- 48,900 in digital and tech
- 35,000 in construction
- 35,500 in early childhood education and care

Fee-Free TAFE is particularly benefitting Australians from priority cohorts, with 170,000 young Australians, 124,000 job seekers and 30,000 First Nations Australians enrolling in the program.

Of all places, six in 10 have been taken up by women, and one in three in regional and remote Australia.

Legislating enduring funding for Fee-Free TAFE builds on the Government's strong record on skills and training

*Media Release from the Offices of
Andrew Giles MP
Minister for Skills And Training
Dr Gordon Reid MP
Federal Member For Robertson*

REGULAR ACTIVITIES & MEETINGS (cont'd)

St Barnabas Christian Service
Yarramalong
Serbian Orthodox

Every Sunday, 9.30am. (Easter & Christmas Carols dates to be advised)
2nd & 4th Sun. of the month. 10 am, followed by luncheon, tea, coffee, cakes (cost \$20).
1184 Peats Ridge Rd, Peats Ridge

Kariong Community Baptist Church

Sun @9.30am, Church & Kid's Program, Philip House, Mt Penang Gardens, Chris Clarke email pastorkcbc@outlook.com

Restitution Ministries
Independent SDA Church

10am every Saturday, Mangrove Mountain Union Church.

Divine Retreat Centre (Ph 04 6848 6782)
160 Hensons Road, Somersby
www.divineretreatcentre.org.au

Daily Holy Mass 8.00am to 8.30 am
1st Fri, 5:30pm-8:30pm Divine Mercy Friday
1st Sat, 5.30pm-9pm, Youth Ministry 18-35yr
Last Sun, 9am-4pm, One Day Retreat

Catholic Service -Spencer

Holy Trinity Church, 2nd Sat of the month 4pm, Contact 43771374 or 43771168 as times may change each month.

- Wollombi

2nd & 5th Sunday of the month, 4.30pm Mass at St Michael the Archangel, Wollombi.

- Yarramalong

1st Sunday each month, 11.15am St. Barnabas All welcome. Enq 0428 438577

YOUTH

Junior Girl Guides 5-10

Kooree Guide Cabin, 5.00pm – 6.30pm Mondays in school term,

Girl Guides 10-15

Kooree Guide Cabin, 6.00pm-7.30pm Mondays in school term, Contact 0417451764 for further information

Scouts, Cubs & Venturers
Peats Ridge Scout Hall

Cubs meet 6.30pm – 8.30pm Wednesdays
Scouts meet 7.00pm – 9.00pm Tuesdays
Venturers meet 7.00pm – 9.00pm Mondays
Contact 0460 696 941

HISTORICAL

Brisbane Waters Historical Society

25-27 Henry Kendall St., West Gosford, Ph: 4325 2270. www.henrykendallcottage.org.au

Dharug & Lower Hawkesbury
Historical Society Inc.

Last Sat of month. All welcome, contact Jan Kofron 0405321478 jankofron@optusnet.com.au

First Fleeters Central Coast Chapter

2nd Sat of the month, 10.00am for 10.30, Point Clare Hall (except Jan & Dec). Contact Margaret 0409467710 or Gavin 43404435.

The Pearl Beach Aboriginal History Group

3rd Fri of month 7.30pm Pearl Beach. Peggy 0411754577 pbaboriginalhistory@gmail.com

Wyong District Museum &
Historical Society

Open Sun to Thurs, 10am-2pm, other times by appt. Contact 43521886 email info@alisonhomestead.com.au website: www.alisonhomestead.com.au

ACTIVITY/HOBBY

Central Coast GNU/Linux Users Group
Coastal Communicators Toastmasters

www.cclug.org.au - all most welcome

Craft/scrapbooking

1st & 3rd Thurs of month, 6:45pm to 8:45pm at Doyalson-Wyee RSL. Debbie 0421216952

Saturday Craft Group/Spining
and bobbin lace

Yarramalong Hall 10am to 5pm, \$12/person. Bring along your projects. Dates & details: stackm@skymesh.com.au or ph 43561196

Yarn group (knit, crochet etc)

2nd Sat of the month Somersby Hall (10am to 2pm) cost \$5 per person Carmen 0434071305

Last Sunday of month 2pm at Angels Sussurri Cafe Yarramalong. Contact Margaret Dale 0411104770

HALL BOOKINGS

Kulnura Hall
Mangrove Mountain Hall
Mangrove Mountain Union Church & Hall

Contact Central Coast Council.

Hall bookings Ryan Howard 0405416289

Church & Hall bookings 0412669649 mmucsecretary@outlook.com

Somersby Hall and Mountain Districts
Culture and Heritage Centre
Yarramalong school of Arts / Hall

Hall bookings: 0413 359 655

or AH 4373 1488

enquiries@yarramalonghall.org.au
<https://yarramalonghall.org.au>

MDS
MOUNTAIN DEVELOPMENT
SOLUTIONS

SCREW PILING

RURAL: TRACK LOADER & EXCAVATOR HIRE
ROAD & DRAINAGE REPAIRS
ROCK & BLOCK RETAINING WALL
SUPPLIED & BUILT

0417 479 525

John White


ELECTRICAL SERVICES PTY LTD
0411 317 506
Commercial | Residential | Industrial

Public hearings on draft update to Plan of Management for Council Community Land

Central Coast Council has placed an update to the Plan of Management for Council Community Land on public exhibition for community feedback and will be running public hearings in November.

Three public hearings are scheduled to give the public an opportunity to discuss community land parcels included in the proposed update.

Wyong – Thursday 14 November (6pm – 7:30pm), Wyong Golf Club, 319 Pacific Hwy, Wyong

Wamberal – Monday 18 November (6pm – 7:30pm), Breakers Country Club, 64 Dover Rd, Wamberal

Gosford – Thursday 21 November (6pm – 7:30pm), Gosford Golf Club, 22 Racecourse Rd, Gosford

The first area-wide Plan of Management for Council Community

POSITIONS AVAILABLE

HC DRIVER WANTED for easy runs 2-3 nights per week

- 1-2 nights approx 4hrs return trip from Mangrove Mountain to Sydney Market (Sunday-Monday, Thursday-Friday)

- 1 longer night approx 4.5hrs driving, load and unload, approx 3hr wait in between (Tuesday-Wednesday)

- Must have fork lift licence/experience
- Must have semi road ranger experience

Phone Peter on 0422 082 764

ADMINISTRATOR / BOOKKEEPER, part time, flexible hours, Mangrove Mountain. Ph 0411 185 717

Land was developed in consultation with the Central Coast community in 2023. The proposed Plan of Management Update will focus on amending the Land Schedule and the maps which show how land is categorised. The update includes newly acquired or identified land, re-classified land lots, as well as changes to the categorisation of some lots already included in the existing plan.

The Draft Plan of Management for Council Community Land Update is on public exhibition until 25 November 2024.

To find out more, and to have your say by 25 November, go to yourvoiceourcoast.com

Central Coast Council
Media release

WANTED

OLD BATTERIES, will pickup, phone 0413 975 107

Wanted: 2002 - 2006 Subaru, reasonable bodywork, mechanicals not important, reg or unreg. ph 0427066384

FOR RENT / LEASE

AVAILABLE TO RENT as storage space or run a business - 5 x chicken sheds 1100m² each. Somersby 10 minutes to Kariong and M1. Phone Jim for any enquires 0414777748

.:KSR.:.

**NEW
GRAVEL**

ROADBASE

\$50/T

DELIVERED

0411 868 437



Mountain Medicine

Providing the local community with a collaborative approach to multidisciplinary healthcare.

Dr Christine Wade

B.Med (Hons) FRACGP

Dr Sepali de Silva

MBBS

Pathology – Douglass Hanly Moir

Mon & Fri 8.30am to 1.30pm

Wednesday 12.00pm to 5:00pm

Ph: 43741942

Torin O' Grady

Podiatry (Foot Care)



NOW BULK BILLING: Children under 16, Health Care Card Holders and Pensioners

40 Niclins Rd, Mangrove Mountain NSW 2250

ph 4374 1252

All Allied Health Professionals are EPC accredited. Medicare rebates are available if you have a GP Management Plan with Team Care arrangements. Please enquire for more details.



Bikes n Motors

Motor Vehicle Repairer

Service & Repairs

Motorcycles ★ Light Vehicles
Cars ★ ATVs ★ Buggies ★ Quads

Call & Book Now

PH: 0491 622 080

1154 George Downes Drive,
Kulnura, NSW, 2250.

★ Behind Jerrys' Cafe ★

bnm@bikesnmotors.com.au

www.bikesnmotors.com.au

**PINK & BLUE
SLIPS**

Licence No:
MVRL56584

CLASSIFIED ADVERTISEMENTS

These columns will be set aside each issue for residents to advertise inexpensively and effectively in their own local paper. If you have anything you wish to sell, buy, swap, etc., ring 4374 1039 or 0412 669 649 during office hours. Rates start at \$4.00.

FOR SALE

GALE'S CITRUS - Bagged Citrus trees in various sizes available ph. 4372 1408 or mobile 0421 196 631

WATER LICENCE Kulnura Mangrove Mountain Ground water source 45 Megs, open to offers, call 0407761375

PLASTIC CRATES - Perfect for Growing crops or used as Benches. Lots of other uses, large quantity available. Stackable, 60cm x 40cm. From \$1.00. Ph 0408 432 999

OLDER FOUR FOOT rotary hoe, 3pl, two 4 foot slasher skids and one ROPS. \$450. 00 Ono. Ph. John 0428438577

AGISTMENT

HORSE AGISTMENT AVAILABLE. Full care. Group and individual paddocks with shelters. Full size sand dressage arena, grass jumping arena. Located walking distance to Peats Ridge Village and Café. Call Cameron on 0438695600

SERVICES AVAILABLE

ALL TERRAIN SLASHING
Track mounted slasher/mulcher and excavator mounted flail mower. Sloping land, fire breaks, hazard reduction of low vegetation, (lantana, etc) fence line clearing, broad acre slashing. Free quotes. Bliss Earthworx 0409456003

SMALL ACRE MOWING
Excavation, Environmental
Remediation 0412 228 718

SERVICES AVAILABLE

AIRCONDITIONING, BUILDING, CARPENTRY - Local service, 14yrs experience in aircon, 22yrs experience in building & carpentry. Call Ken 0412 842 920

BRICKLAYING & Render repairs. Adrian 0408347737. Lic 98665C

TOWN 'N COUNTRY FLOOR SANDING & POLISHING New & old floor boards, parquetry, verandahs, stairs, walls ceilings, re-coating, staining & painting ect. free quote ph Stuart 0400076261 in services available.

HANDYMAN (with own tools) looking for work in the greater Lower Mangrove, Mangrove Mountain, Central Coast area. Also have Forklift licence. Phone 0414 912 423

RURAL FENCING - Post & rail, wire stock, chainwire, colourbond, paling etc. Also Landclearing. Phone Rick 4373 1117

Laurie DOUGLASS PLUMBING
Plumber, Drainer, Gasfitter, Roofer - Ph 4373 1257 Mob 0407 008 488

HORSE BURIALS

Specialising in the on-site burial of your precious horse. Ph Craig 0411 2888 12

LOCAL CLOTHING ALTERATIONS AND REPAIRS - Contact Yolanda on 0408733243

ROOF AND GUTTER CLEANING, call Alan on 0427606303. Call for a free quote

METAL PATIOS, INSULATED ROOFS & Carport Builder. Custom made awnings, Decks, Carports & Sunrooms 0420906499

OOST Painting Contractors - Lic 71725C
Quality & cleanliness assured.
For a free quote call David 4356 1449 or 0417 234 094. Yarramalong Local

PEST CONTROL - Servicing the local area. A.T.S. Pest Control Services Phone Tony 4373 1157 Mob: 0427 731 157

HORSE RUG REPAIRS - reliable prompt service. Pick-up & drop-off available for large quantities. Ph 0405 620 394

CERAMIC CLASSES & OPEN CER STUDIO (by appointment-ph: 0411 870 090)

JOIN me in an unforgettable journey of clay holding and artistic exploration. Reserve your spot today SIMPLY BOOK on foxeystudio.com or email me foxeystudio@gmail.com

LEVEL 2 QHHT Practitioner and Soul Speak Practitioner. Also offering:

- Group Regression Sessions
- Personalised dowsing sessions
- Pendulum dowsing classes
- Holistic Household Cleansing Consults
- Magna Carta 1215 group tutorials
- Crisis Counselling Phone Service

For enquiries call Sharyn on 0408 967 507, email to shazzaunitt@protonmail.com or visit www.soul-speak-healing.com

EXCAVATIONS

Free quotes, phone Craig 0411288812

MISTY MOUNTAIN RURAL CONTRACTORS - Earthworks, Irrigation, all services available Ph 43530990 or 0418221495

ALL COVERS & CANVAS WORK!

Boats, Vehicles & Horse floats re-trimmed, cover & horse rug repairs, no job too small! Servicing the mountains & the valleys. Call Alan on 0414 993 669 or Louise on 0410 646 200. located at Yarramalong Road Wyong Creek.

WATER BORES

Local drilling company based at Ourimbah

Contact: Paul Slade

Ph/Txt: 0408 471247

email:

Sladedrill@bigpond.com

Your LOCAL GUY for Communications and Security

BEFORE YOU ORDER STARLINK:

ONE MONTH FREE SAVE \$139.00.

Use the QR Code below.



STARLINK:

1. Download the Starlink App and do the scan. 2. Call me.

Multiple buildings:

WiFi link to multiple buildings, sheds etc, call for info.

VAST Satellite TV:

We supply and also install

Master Security License:
101264
Open Cablers License:
55883
Insured PI & PL.
Over 30 years In business.
Techniport Pty Ltd T/A

CLOUD SECURITY
Call WARREN 0407 366 444



Contractors Licence No: 367849C

WATERMAN EXCAVATIONS PH: 0438 617 851

Mulching - Horse Arenas - Certified Fill

Sands - Soils - Mulches - Woodchips
Gravels - Pebbles - Rotomill

Excavators - Tipplers - Grader - Dozer - Pozi Track - 6x6 Dump Truck

CROSSROADS AUTOMOTIVES

Terry Kyriacou

Mon - Fri: 7:30am - 5:00pm

Saturday: 7:30am - 12:00pm

SPARE PARTS

LOG BOOK SERVICES

MECHANICAL REPAIRS

Ph: 4373 1774



Cnr of Wisemans Ferry Rd. & George Downes Drive, Central Mangrove

AUTHORISED INSPECTION STATION (INCL LPG)

The Grass Cutters

- Slashing
- Rock picking
- Farm cleaning and clearing
- Cultivation and more
- Obligation-free quotes



Call 0419 412 993

Email pat@thegrasscuttersrus.com

See us in action at: thegrasscuttersrus.com



GIWS

GOSFORD IRRIGATION
& WATER SOLUTIONS

- AGRICULTURE
- INDUSTRIAL
- DOMESTIC

Licence No - 269888C

24 HOUR EMERGENCY CALLOUT SERVICE

Ph: 4322 3333

Fax: 43223433

Email: sales@girrigation.com.au

Web: www.girrigation.com.au

Unit 2 254 Manns Road, West Gosford NSW 2250



K&T PROPERTY CONSULTANTS PTY LTD

Real Estate Valuers & Land Economists

ROBERT MEGGS FAPI CPV

providing independent property valuation advice, including:-

- Stamp Duty, CGT, GST & Retrospective Valuations
- Probate & Estate Valuations
- Insurance Valuations
- Valuations for Family Law
- Pre-Sale/Auction Advice
- Land Value & Compulsory Acquisition Valuations

500 Kyola Road
KULNURA NSW 2250

Telephone (02) 4376 1451

Mobile 0429 44 33 10

Email: ktpropty@ozemail.com.au

Misty Mountain Rural Property Development Services



- agricultural consultants
- pasture improvement
- fertilizer spreading
- weed spraying
- all tractor work 4/2WD
- soil conditioning
- irrigation install/design
- fencing & stables
- crop planning & planting & all excavations
- concrete slabs Lic. R94321
- property evaluation & planning & management
- fork lift hire

Ex-Dept. Agriculture Officer with 45 years
experience in the local district.

Greg Koutoulas is the man to call on 0418 221 495



Stop Water Shop

Authorised Dealer

**ONGA, DAVEY and
GRUNDFOS PUMPS**



K. W. & M. E. WEST Pty. Ltd.

1650 Wisemans Ferry Road,

Central Mangrove

Phone 4373 1164 Fax 4373 1049

PUMP REPAIRS AND SERVICE

Trading Hours

Mon - Fri

7.30 am - 5 pm

Sat 7.30 am - 12 noon

Closed Public Holidays