

# COMMUNITY NEWS

No. 937 Ph: 4374 1039 Mo: 0412 669 649 Email: enquiries@cnews1.com.au Web: cnews1.com.au 16th February 2023

## MDA TO USE GRANT TO PLANT NATIVE GARDEN

MDA has received a grant as part of Council's "Stronger Communities".

We plan to build a low maintenance, native garden at the Crossroads.

Our objective is to invigorate the town's entrance by beautifying it and making it more appealing to the local community and visitors alike.

You are invited to a community meeting to be held:  
At the Mangrove Mountain Memorial Club.  
On Wednesday, 13th March at 7pm.  
The garden design and concept will be on display.  
Community members are encouraged to offer their comments and suggestions.

*Poppe Zouroudis  
Secretary, MDA*



## MMUC - Notice of Special General Meeting and AGM

Mangrove Mountain Christian Group will hold a SGM followed by an AGM on Monday, February 19th, 2024, commencing 7.00pm at the MMUC Hall.

Elaine Raines will be hosting a celebratory get together at 6pm prior to the meeting for all the Mangrove Mountain Union Church supporters; past, present and future ... see you there, dinner provided

*Keith Aranjó, Secretary, MMUC  
MMUCsecretary@outlook.com  
0412 669 649*

## CB Radios for your Resilience Team

Have you formed a Community led resilience team or are you part of a neighbourhood group preparing a disaster response plan?

Using CB Radios will enable you to keep in touch with others in your team and to contact other groups, emergency services and support groups.

Currently the MEPCC is rolling out a CB Radio Emergency Communications Network that is designed to provide a last line of communication when power, landline and mobile phones fail.

Especially when you become isolated by bushfires, floods or landslides, being able to communicate with others is essential.

The MEPCC CB Radio network covers most of the rural area of the Central Coast west of the M1 stretching from the Hawkesbury River up to Wollombi.

The CB Radios are supplied and installed free of charge thanks to Commonwealth Government funding under the BSBR grants scheme.

Fixed CB Radios are the preferred option as they utilise an external antenna mounted at the roofline but there is also an option for handheld



Left: Antenna, Top Right: CB and power supply, Bottom Right: Backup battery

CB's.

To date over 172 radios have been deployed or are programmed for installation.

Three training sessions have been held with more to be announced. The training covers the operation of the CB and the broadcasting protocols.

If you would like to participate or would like more information please contact the MEPCC by email on [mepccinc@gmail.com](mailto:mepccinc@gmail.com).

## SOMERSBY RDA



Volunteer Information Day at the RDA Centre in Kangaroo Rd Somersby from 10am on Saturday 24th February 2024 and

Annual General Meeting for Central Coast Centre of Riding for the Disabled - 7pm on Monday 25th March 2024.

*Linda Bower, Secretary  
RDA Central Coast*

"A fool tells you what he will do;  
a boaster what he has done.  
The wise man does it and says  
nothing."

*Anon*

## REMINDERS FOR YOUR DIARY

MMUC Trust - AGM & Special General Meeting 19th Feb, 7pm MMUC Hall

Meet your local MP - Tues 5th March, 11am - 1pm, The Springs Golf Club. RSVP [KPRHACPS@gmail.com](mailto:KPRHACPS@gmail.com)

MMDCG AGM - 7th March, 7.30pm, Mangrove Hall

## STOP!

Next issue Published  
1st March 2024

**\*\* DEADLINE \*\***

**\*\* 23rd February '24 \*\***

Send adverts & copy by  
email, website or post.  
Email, website, FB or  
phone for enquiries

# Community resilience plan for Yarramalong Valley & Hawkesbury River Cluster

Please note, the February community workshops have been cancelled.

Instead, we encourage you to drop in to one of the following community pop-up stalls to meet the project team and have your say to inform a community resilience action plan for your area.

## Yarramalong Valley

Date: Thursday 29 February 2024  
 Time: Drop in any time between 5pm - 7pm  
 Location: Angel Sussurri, 1-4 Linga Longa Road, Yarramalong

## Hawkesbury River Cluster

Date: Friday 1 March 2024  
 Time: Drop in any time between 5pm - 7pm  
 Location: The Anchor Spencer, 4666 Wisemans Ferry Road, Spencer

## Northern Tuggerah Lakes

Date: Saturday 2 March 2024  
 Time: Drop in any time between 10am - 12pm  
 Location: Northlakes Shopping Centre, San Remo

## Southern Tuggerah Lakes

Date: Saturday 2 March 2024  
 Time: Drop in any time between

2pm - 4pm  
 Location: Chittaway Bay Shopping Centre

## Background information

Central Coast Council has partnered with the NSW Government and The Minderoo Foundation to develop community resilience plans for four areas in our region most recently impacted by disasters, including:

- Yarramalong Valley
- Hawkesbury River Cluster (including Spencer, Gunderman, Marlow)
- Northern Tuggerah Lakes
- Southern Tuggerah Lakes

Resilient communities tend to have strong community connections, helping them to prepare for and bounce back quicker from disasters.

- This planning will:
- Help communities to understand their vulnerabilities.
  - Build and strengthen relationships – to prepare better for next time.
  - Assist communities to develop plans with short, medium and long term goals.

Ariadne Sofianidis  
[www.credconsulting.com.au](http://www.credconsulting.com.au)



## Singing Group

It's a fun and relaxed time to sing along to your favourite tunes in a small group just for the joy of it.

There are a huge variety of songs from pretty much every decade and style of music; folk, pop, rock, country and show tunes. If we don't have what you'd like to sing we'll get it for next time.

Players of instruments and all type of music fans welcome.

Enthusiasm compulsory with talent entirely optional!

Meeting at Mangrove Mountain Hall 6pm on the 1st & 3rd Tues of the month.

Why don't you come along to sing along!

Kim & Leila  
 0401 516 501

• Sand • Soil • Gravel • Road Base  
 • Chicken Manure Supply and Shed Cleanouts • Bulk Deliveries

• B-Double Prime Mover • Truck and Dog  
 • Bogie Rigid-Tipper • Bogie Rigid-Tautliner • Semi-Tipper  
 • 45ft Flat-top, Stepdeck & Tautliner

**Dallas J. Fabian**  
**0417-285-047**  
[dallas@djfhaulage.com](mailto:dallas@djfhaulage.com)

## MANGROVE MOUNTAIN PHARMACY

Monday – Friday: 9am-7pm  
 Saturday: 9am-3pm Sunday: Closed

**Free Flu Vaccine**  
**Now Available**  
**No Bookings Required**

- Free webster packing and all your pharmacy needs
- Household goods and gifts
- Milk, cold drinks
- Parcel point outlet

3/1 Waratah Road, Mangrove Mountain, NSW 2250  
 Phone: (02) 4374 1457 Fax: (02) 4374 1479  
 Email: [mangrovetpharmacy@gmail.com](mailto:mangrovetpharmacy@gmail.com)



# Mangrove Mountain Farmers and Artisans Market Grand Opening

With the Grand Opening of the Mangrove Mountain Farmers and Artisans Market just around the corner on Sunday the 3rd of March, we thought we'd let you know about the amazing variety of local produce, artisans and cottage industry stalls joining us at the historic Mangrove Mountain Hall and recreation reserve on Sunday the 3rd of March!

Currently we have over 20 stalls selling everything from fresh local Fruit and Veggies, Honey, Cheese, Olives, Jams and Preserves, Plants and Flowers to Handmade Pottery, Soaps, Macramé, Health products, Bags, Woodworking and more! The CWA Mangrove Mountain Evening Group will be serving scrumptious Devonshire Tea's from the hall kitchen and you can sit back and relax at the tables and chairs under the trees to enjoy the live music.

We're aiming to showcase the best in local produce, artisan and cottage industry on the Mountain for locals and visitors to the area alike as well as creating a great day for the community to get together and enjoy catching up over a cuppa, listening to music or browsing the market stalls, so why not join us at our grand opening market on Sunday the 3rd of March, 9am till 3pm at the historic Mangrove Mountain Hall and recreation reserve. Entry is free.

If you would like to have a stall at our grand opening and join a great selection of stalls, we still have outdoor stall sites available. A 3x3m marquee site costs just \$25.

For enquiries or to book email [mangrovemountainhall@gmail.com](mailto:mangrovemountainhall@gmail.com) or Ph 0405416289

**Mangrove Mountain**  
**Farmers & Artisans Market**  
**1st Sunday of every month**  
**Mangrove Mountain Hall 9am ~ 3pm**  
[www.facebook.com/MangroveMountainFarmers&ArtisansMarket](http://www.facebook.com/MangroveMountainFarmers&ArtisansMarket)

**CWA Devonshire tea, cakes, Jams & Preserves**  
**Farm fresh fruit and vegetables**  
**plants and flowers**  
**Pottery, Arts and Craft stalls**  
**Playground for the kids + Picnic area**



## Mangrove Mountain MEMORIAL CLUB & GOLF COURSE

### WHAT'S ON WEEKLY

#### TUESDAY

BINGO from 11am  
 Pizza & Pasta specials starting from \$10

#### WEDNESDAY

MEAT RAFFLE drawn at 730pm  
 \$15 schnitzel night from 530pm

#### THURSDAY

MEMBERS BADGE DRAW drawn at 730pm  
 \$18 burger night from 530pm

#### FRIDAY

HAPPY HOUR 4-6pm  
 COCKTAIL HOUR 6-7pm  
 MEAT RAFFLE drawn at 730pm  
 New restaurant specials every week from 530pm

#### SATURDAY

POOL COMP from 630pm  
 entry fee \$5

Find us on Facebook & Instagram  
 18 Hallards Road, Central Mangrove, 2250  
 02 4373 1129 [www.mmmclub.com.au](http://www.mmmclub.com.au)

#### NEW RESTAURANT

##### HOURS

starting 18th February

TUESDAY - FRIDAY  
 12 - 230PM

TUESDAY - SATURDAY  
 530 - 830PM

SATURDAY & SUNDAY  
 1130am - 230pm

SUNDAY  
 530 - 8PM

*New Menu  
 Coming Soon*



#### FEATURE BEER



**\$7.00**

SCHOONERS  
 STONE WOOD



**WE ARE HIRING**  
 chef / cook

# Blues on the Mountain upcoming events

After starting off the new year with the fabulous L.R. Marsh, Blues on the Mountain is proud to announce some more great upcoming events!

## Nathan Beretta Band album launch Saturday 23rd of March

Nathan performed at our very first event back in 2013 with the award winning band, "Blue Eyes Cry", one of the best Blues and Soul bands to come out of Melbourne, fast forward to 2019 and Nathan was blazing a new trail through the Blues festival scene with his new band, the Nathan Beretta Band, topping the charts with their debut album "Where I Belong".

Nathan Beretta is a real blues man, his guitar playing & vocals is authentic yet modern.

Nathan has shared the stage with many Australian Legends such as Ash Grunwald, Robert Susz (Dynamic Hepnotics) Shane Pacey (Bondi Cigars), Geoff Achison, Lloyd Spiegel, and Chris Wilson just to name a few. When it comes to festivals Nathan has performed throughout Australia opening up for international acts such as Anne Popovich, Jon Cleary, and Joe Louis Walker.

Growing up with Blues jazz and soul in the household, Nathan has brought his own unique style to the table. Influenced by artists such as Ronnie Earl, Albert Collins, and Jimmie Vaughn, Nathan plays from the soul.

To celebrate the release of their second album, the Nathan Beretta

Band will be performing at the historic Mangrove Mountain Hall on Saturday the 23rd of March along with a very special guest.

Doors open at 6pm. Great food available for purchase, BYO welcome. Tickets cost \$30 (Adults) children under 12 years of age, accompanied by a paying adult, free. To book visit [www.trybooking.com/CODOC](http://www.trybooking.com/CODOC)

## Frank Sultana and his Blues Band Saturday 27th of April

We've brought some of the best acts in OZ to the historic Mangrove Mountain Hall and now the Bluesman voted the best in the world is set to perform on our little hall stage! Frank Sultana won the converted International Blues Challenge, held in Memphis Tennessee USA in 2013 and we have been lucky enough to book



- Excavator with Buckets, Hammer, Auger & grabs.
- Posi track with 4in1 bucket, forks & spreader bar
- Tipper 6 ton
- Posi track slashing

**Excavation - Concrete - Landscape**

Facebook, Instagram  
Email: [blissearthworx@gmail.com](mailto:blissearthworx@gmail.com)  
▲ Based in Somersby ▲

**0409 456 003**



*\* Free Quotes \**

**40t All Terrain, Franna  
3t Mini Crawler, Crane Truck**

Now serving Mountain Districts & beyond

email: [sales@crossroadscranes.com.au](mailto:sales@crossroadscranes.com.au)  
Web.: [Crossroadscranes.com.au](http://Crossroadscranes.com.au)

**Call Alan 0456607501**



- dam building & cleanouts
- horse burials • shed pads
- driveways • horse arenas
- clearing • bulk excavations and more

- excavators ranging from 5t-30t • 13t roller • grader
- backhoe • positrack
- dozer • tipper hire
- prime mover with spread deck float

**0499 780 027**  
[bfanelli03@gmail.com](mailto:bfanelli03@gmail.com)

Free Quotes



## Local Solar Power Experts

Living Off Grid  
Has Never Been Easier

Brooklyn Trade Services are your local solar electricians, for both on and off-grid systems.

Our technicians are certified to install state-of-the-art solar and battery systems which are great for the environment as well as your home and or business.

Call us for a chat:  
**1300 319 419**

[www.btselectric.com.au/bts-energy](http://www.btselectric.com.au/bts-energy)




**JEREMY AOUN**  
PLUMBER | GAS FITTER | ROOFER

OVER 30 YEARS EXPERIENCE  
SUPPLIER OF RAPIDPLAS TANKS

Mobile: 0424 894 225  
Licence: 134701C  
Email: [aussieplumbing1@gmail.com](mailto:aussieplumbing1@gmail.com)



# Blues on the Mountain

Est 2013

upcoming events @ the historic Mangrove Mountain Hall

**Saturday 23rd March**

**Saturday 27th of April**



tix \$30 [www.trybooking.com/CODOC](http://www.trybooking.com/CODOC)

tix \$30 [www.trybooking.com/CODOD](http://www.trybooking.com/CODOD)

Frank Sultana with his four piece Blues Band to play at the historic Mangrove Mountain Hall on Saturday the 27th of April! Tickets are already selling fast for this show, and cost \$30. To book

visit [www.trybooking.com/CODOD](http://www.trybooking.com/CODOD)  
Keep an eye out in the Mangrove Mountain and Districts Community News as we will have one more exciting Blues on the Mountain announcement

in the next edition!  
Look forward to seeing you at a show,

Ryan and the  
Blues on the Mountain team

**DMECS**  
SOLAR • BATTERY STORAGE • ELECTRICAL

SERVICING THE CENTRAL COAST

0404 556 811

CLEAN ENERGY COUNCIL  
ACCREDITED  
INSTALLER  
DANIEL MOFFETT

W [www.dmecelectrical.com.au](http://www.dmecelectrical.com.au)  
E [admin@dmecelectrical.com.au](mailto:admin@dmecelectrical.com.au)  
IG [dmecelectrical](https://www.instagram.com/dmecelectrical)

**FRAZER**  
BUILDING

• NEW HOMES • EXTENSIONS • RENOVATIONS

0439 101 889  
[info@frazerbuilding.com.au](mailto:info@frazerbuilding.com.au)  
[frazerbuilding.com.au](http://frazerbuilding.com.au)

**HERFO'S FIREWOOD,  
ORGANIC MULCH & COMPOST**

- FIREWOOD
- MULCH
- COFFEE COMPOST SOIL
- PECAN WOOD SMOKING CHIPS

Contact us for a quote!  
[www.herfoswoodshed.com.au](http://www.herfoswoodshed.com.au)  
David 0418 233 595

**YOGA** WITH JANEЕ  
MANGROVE MT COMMUNITY HALL

Tuesday 9:30am 75 min practice  
Thursday 6:30pm 75 min practice  
(with exception of the first Thursday of the month being at 6pm)

Hatha/Yin/Yoga  
Nidra/Breathwork/Meditation

All Welcome, Please Bring Your Mat  
\$15 A Class, Contact Janee For Enquiries **0425358621**

# DR REID PRESENTS INAUGURAL ROBERTSON MEDALLIONS ACROSS THE COAST

The inaugural Robertson Medallion has been presented to students in primary and secondary schools across the Robertson electorate during end-of-year assemblies in 2023.

The award has been established by Dr Gordon Reid MP to recognise students who have demonstrated, throughout the school year, consistent dedication to the principles of social justice, community initiative, leadership, and integrity.

“When I was elected the Federal

*Note, not all schools in the Robertson electorate participated and not all recipients shown*

School Name	Student Name	Year
Central Mangrove Public School	Lilliana Fabian	Year 6
Peats Ridge Public School	Matilda Steep	Year 4
Kulnura Public School	Matilda Luci	Year 5
Somersby Public School	Neve Hyett	Year 3
BWSC Umina	Ebony Falconer	Year 9
Central Coast Adventist School	Charlie Heise	Year 11
Central Coast Sports College - Senior	Euan McEvoy-Folland	Year 12
Central Coast Sports College - Junior	Cash Jamieson	Year 6
Chertsey Primary School	Elizabeth Steptoe	Year 6
Erina High	Rory Campbell	Year 12
Gosford East Public School	Finn Hutchens	Year 6
Gosford High	Thomas Ralph	Year 11
Green Point Christian School - Primary	Phoebe Norton	Year 6
Green Point Christian School	Zara Learmonth	Year 11
Henry Kendall	Amelia Stevens	Year 11
Holy Cross Primary School	Hannah McCann	Year 6
Kariong Mountains High	Monira Abubakar	Year 12
Kariong Public School	Jake Makila	Year 6
Ngaruki Gulgul Central School	Syls Sales-Pavey	Year 10
St Edwards	Jye LeBrocq	Year 11
St John the Baptist Primary School	Ella Jenkin	Year 6
St Joseph's Catholic College	Olivia Ryan	Year 11
St Patrick's Primary School	Esther Mathey	Year 6
Woodport Public School	Indi Sargent	Year 4
Woy Woy Public School	Nevaeh Markham	Year 5
Woy Woy South Public School	Isabella Grant	Year 6



20 Langford Drive,  
KARIONG

**4340 5154**

**Chiropractic    Massage**

**Nutritionist    Acupuncture**

**Counsellor    Podiatrist**

HICAPS available  
Medicare EPC & Workers Comp accepted  
After hours appointments available

Like us on social media for  
the latest clinic news





**Caring for Kariong & the  
Mountain District for over 20yrs.**

**SOLICITORS & ATTORNEYS**

*Solving Coastal and Mountain legal problems  
effectively and efficiently for over 27 years*

- \* Conveyancing
- \* Wills & Probate
- \* Work Place Insurance Claims
- \* Personal Injury Insurance Claims



*NSW Law Society Accredited Specialists*

**98 Mann Street, Gosford Tel: 4322 6666**  
**25 Alison Road, Wyong Tel: 4353 1248**

**Horse Vet**

Somersby - Mangrove  
& Central Coast area



**Brett Warren**

Mobile: 0428 215 599  
Home: 4374 1640

Email: [brettvet@ozemail.com.au](mailto:brettvet@ozemail.com.au)  
[www.centralcoastequine.com.au](http://www.centralcoastequine.com.au)

**Consultations by appointment**  
Mobile X-ray, endoscopy, purchase and insurance exams



Member for Robertson, there was no end-of-year award dedicated to recognising outstanding students from the Australian Government at a local level, within the electorate”, Dr Reid said.

“I discussed it with my team and together we established the Robertson Medallion, which is awarded to students in both primary and secondary school”.

“Schools nominate a student who they have identified meets the criteria to receive the award”, Dr Reid said.

“The criteria include a commitment to social justice, community initiative, leadership, and integrity”.

“I have been amazed by the outstanding community work each Robertson Medallion recipient has been involved with throughout 2023, and I am very confident in our up-and-coming leaders of tomorrow”, Dr Reid said.

“There have been 42 recipients of the Robertson Medallion for 2023, and it has been a special journey presenting the award to students at end-of-year assemblies”.

“I look forward to 2024 and recognising many more students with a Robertson Medallion”, Dr Reid said.

Some of the 2023 medal winners are shown in the table on the opposite page.

*Press Release from the  
Office of DR Gordon Reid MP  
Federal Member for Robertson*



*Photo Right: Lilliana Fabian, Medal winner from Central Mangrove Public School*

# MANGROVE PRODUCE AND HARDWARE

1668 Wisemans Ferry Rd, Central Mangrove (just 1km from the Crossroads)

**SUMMER IS HERE!  
WE HAVE ALL YOUR SUMMER NEEDS.  
FANS, POOL CHEMICALS AND  
ACCESSORIES.  
BBQ'S AND EVEN COOLPADS FOR  
YOUR PETS  
COME IN AND SEE US TODAY.**



- ◆ Horse Feed
- ◆ Fertiliser
- ◆ Paint
- ◆ Pet Food
- ◆ Timber
- ◆ Plumbing
- ◆ Bird Seed
- ◆ Hardware
- ◆ Fencing
- ◆ Vet Supplies
- ◆ Hand Tools
- ◆ Electric
- ◆ Chemicals
- ◆ Power Tools
- ◆ Fencing

Mon-Fri: 7:30am -5:00pm  
Sat: 8:00am -2:00pm

**Ph: 43731259**

SHOP ONLINE AT  
[www.tuckersstore.com.au](http://www.tuckersstore.com.au)  
or [shop.truevalue.com.au](http://shop.truevalue.com.au)

## Mountain Anglican News

We hope you all had a great Christmas and that God's many blessings will be with you for the coming year.

At our carols service we were very blessed with some very talented locals, who instrumentally accompanied our singing for all our carols and then early in the new year, we had two performers who came down from Queensland who sang and played the guitar for one of our services. We sincerely would like to publicly thank both groups for giving up their time and sharing their various talents with us. We are looking forward to hearing them again.

Our growing Bible discussion group resumes after the Christmas holidays and on Saturday 3rd February down at Gosford church, some of us will be attending the official outside labyrinth opening.

Our usual weekly 8am worship services continue at the Scout Hall, 153 George Downes Drive Central Mangrove, led by the Reverend Jim, with the rector, the reverend Christian Ford from Gosford visiting us once a month.

For enquiries and bookings, the Reverend Jim can be contacted on 0407210861 or just turn up at the 8am service. We would love to welcome you.

We are now preparing for the Lenten season as Easter is early this calendar year God's blessings,

*Mountain Anglicans.*

# SATURDAY CRAFT GROUP

Meeting on the 2nd Saturday of  
each month (10am -2pm)

Ladies from the CWA in conjunction  
with the Community Hall in  
SOMERSBY

SPINNING

BOBBIN LACE

NEEDLE FELTING

ANY CRAFT WELCOME

Contact Carmen 0434071305

## Engineering & Fabrication Services

- Workshop fabrication & Welding
- Lathe/Milling/Machining at our workshop
- Steel/Stainless/Aluminium Welding
- Workshop located at Peats Ridge
- On site services

**Bentley Industrial Pty Ltd**

**0411 052 275**

**Peter@Bindustrial.com.au**

## Dr. S. ANANDASIVAM

(ANAND)

**MBBS, FRACGP, AMCC**

For Doctor Appointments:  
Monday - Friday 9am- 5pm

*Laverty Pathology Service  
Available:*

*Monday to Friday 8:00 till 3:30  
Saturday 8:30 till 12*

**Medicare Bulk Billing**

**1639 Nurses Road  
Central Mangrove, 2250**

**02 4373 1914**



# Fundraiser to help family after horrific accident

This Fundraiser was created to help a local family after a horrific accident.

On Tuesday morning, 6th of February 2024, there was a terrible accident involving three trucks and a ute along Peats Ridge Rd, Somersby which kept that section of road closed for 48hrs.

This accident involved Matthew Hall, a local, a friend and a father of four little children.

Unfortunately Matt was heavily involved in this accident, no fault of his own. He was just driving home from work on a usual Tuesday morning. He was trapped in his truck, had to get air lifted to John Hunter hospital where he was in a very critical condition.

Matt & Jade have four little children all under the age of five years old. Noah 5, Elora 2, Jakara 1 & Kyron 5 months old.

Matt being self employed, they don't have a lot of money and live week by week with Matt being the main provider running his own removalist business.

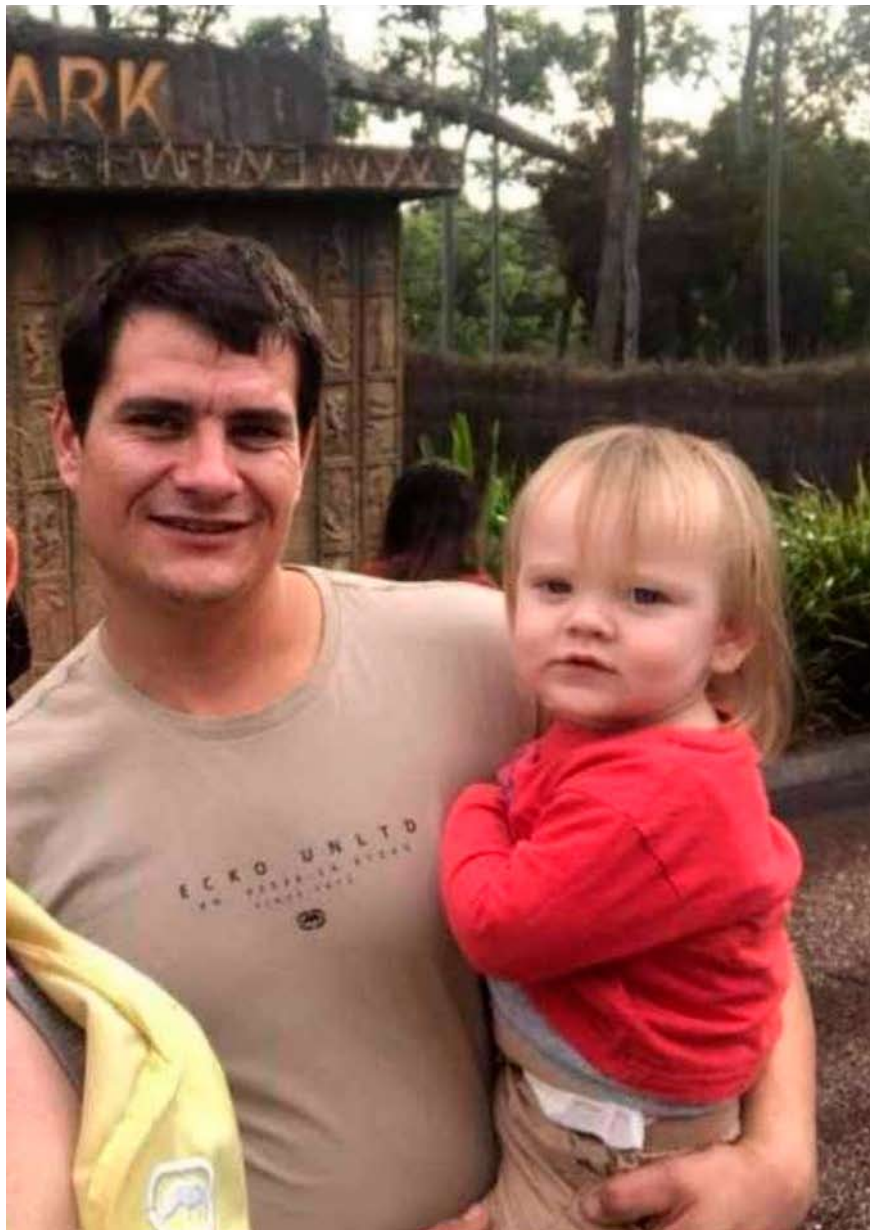
After a good 4 days in hospital. Matt has spread his wings. Matt died on the evening of Saturday, 10th of February. Leaving his children behind and partner Jade completed heart broken.

I'm asking the community, to please support Jade and her kids during this time.

I have set up a go fund me page.

I'm asking that we all donate a little to help this Mountain family.

Any donations are appreciated as it will all help this families needs whilst they are going through this traumatic experience.



Donations can be made via the go fund me page <https://gofund.me/f23a3acd>.

Or please head to "Mangrove Mountain and Districts Community News" facebook page.

So far we have raised \$3500. Thanks to each and every one of you that have helped by donating.

The reason why I love living on the mountain, is that we are a tight nit

community. We all pull together and help each other when things don't go quite as planned. I created this go fund me page to help a friend in need but also because I continue to think, that could be me or anyone of us in her shoes.

Family is everything!

Much love,

Anne-Maree Colagiuri

<https://gofund.me/f23a3acd>

**CVO**  
COAST & VALLEY  
OVERLAND

**OILS CAMPING CLEANING**  
U6, 17 CRAFTSMAN AVE, BERKELEY VALE  
www.coastandvalleyoverland.com  
4388 5911 0437 88 5919

**COASTAL TRUCK LICENCES**

LR to HC Licences

**Paul Viola: 0481 409 309**

ABN: 36 659 041 880  
info@coastaltrucklicences.com.au  
Coastal Truck Licences



**What's on at The Wollombi Cultural Centre**

Coming exhibition:

**"SPIRIT of COUNTRY"**

Judith Franklin , 23 March - 7 April 2024

**Life Drawing Sessions, 2024**

Wednesdays, 1-4pm, \$20 to \$25  
 Feb 7, 28, March 20, April 10, May 1, 2 continuing until Dec.  
 Call Mandy to Register 4998 8686

**WVAC 2024 Annual General Meeting (AGM)**

The AGM will be held on Saturday 13th April at 3pm, in the courtyard of the Wollombi Cultural Centre, followed by a General Committee meeting. All welcome.

The Wollombi Valley Arts Council encourages and fosters all kinds of artistic and cultural expression within the Wollombi Valley in order to support and promote artists and our community.

Judith Franklin  
 Presents Solo Art Exhibition  
 "Spirit of Country"  
 Old Fire Shed Gallery  
 Wollombi Cultural Centre  
 2892 Wollombi Road,  
 Wollombi

You are invited to the opening Saturday  
 23rd March 2024—4 pm.  
 Gallery Opening Days:  
 March 22nd—April 7th—10am to 3.30pm  
 MOBILE 0418279535

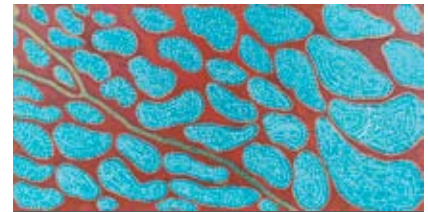
**The Little Yengo Gallery**

The Little Yengo Gallery was built and is maintained and run by volunteers to celebrate the rich Aboriginal history and culture of Wollombi and surrounding areas. The non-profit gallery displays an extensive range

of Aboriginal paintings, artworks and artefacts. The proceeds from the sale of the works, minus a small administrative fee, go directly to the artists.

Wollombi means 'meeting place', our totem is the waterhen. Please come and learn the waterhen story and meet the artists. New volunteers and artists are welcome.

Visit <https://www.wollombi.org/little-yengo-gallery> for our online gallery.



*Swampy Creek Full of Life'*  
 Gavin Barlow



*Bark Painting'*  
 Gavin Barlow

Wollombi Valley Arts Council Inc  
 c/o General Store, Wollombi 2325  
 Email: [artscouncil@wollombi.org](mailto:artscouncil@wollombi.org)  
 Web: [www.wollombi.org](http://www.wollombi.org)  
 f: <https://www.facebook.com/artscouncilwollombi>

**ANZAC DAY**

The Palmdale Group will host ANZAC Day Ceremonies at both Palmdale and Greenway on 25th April, paying respect to the memory of our service men and women.

Services and Wreath laying ceremonies will be held at both Palmdale and Greenway.

Proudly presented by



**Palmdale Lawn Cemetery & Memorial Park**

57 Palmdale Road, Palmdale, NSW.

Commencing at 9am, the service will be held adjacent to the Defence Force Memorial.

**Palmdale phone:**  
**4362 1203**

**Greenway Chapel & Memorial Gardens**

460 Avoca Drive, Green Point, NSW.

Commencing at 11am, the service will be held adjacent to the Defence Force Memorial.

**Greenway phone:**  
**4369 2013**



**LEST WE FORGET**

[creightonsfuneralservice.com.au](http://creightonsfuneralservice.com.au)



CENTRAL COAST

**SELECT**  
PROPERTIES


**FOR SALE**



**Just Listed**

**4400 Wisemans Ferry Road, Spencer**

Enjoy the beauty and serenity of your own private valley

-  4
-  3
-  2
-  50 ac

- Light filled architect designed 3-bedroom, 2-bathroom home provides a luxurious lifestyle
- Wide decks, beautiful gardens, citrus and olive groves, terraces, and relaxed seating areas created by the architect/artist owner allow you to truly enjoy this spectacular setting
- Adjacent to the main home but with a private feel, is the well-appointed one-bedroom loft apartment, currently utilised by those seeking B&Bs in such a special environment within an hour of Sydney
- Rustic shed incorporating large artist studio/workshop, office, and parking for vehicles
- Fully fenced, cleared, flat grazing land separated into 3 paddocks and serviced by a picturesque dam
- Easy access from Wiseman's Ferry Road via a gated all-weather tree-lined driveway that opens to an attractive entrance courtyard and gardens
- Utilities include 3 phase power, Starlink TV and internet connection, mobile telephone reception, 3 large water tanks and an Enviro-cycle
- Located 5 mins from Spencer village shops, wharf and boat ramp accessing the magnificent Hawkesbury River
- Just 60mins (approx.) drive from Wahrenonga on the M1, and only 30mins to shops, schools and other facilities Gosford and the Central Coast have to offer

Contact one of our agents | CALL 02 4324 8464



[www.ccselect.com.au](http://www.ccselect.com.au)



**Office Address**

Suite 1,  
2/872 Pacific Highway, Lisarow NSW 2250

P: (02) 4324 8486

E: [info@ccselect.com.au](mailto:info@ccselect.com.au)

# International Women's Day 2024

*Inspire Inclusion*

The International Women's Day Expo 2024 will be held at The Entrance Community Centre, Norberta Street, The Entrance on 9 March 10am – 3pm.

Many prominent women's organisations including CWA of NSW, Soroptimist International, Zonta Club of the Central Coast, Iris Foundation, Community and Business Women's Network, Community Women's Health Centre, Volunteers Central Coast, Better Hearing and TAFE NSW Aboriginal Engagement will be present with a stall to provide information on their work in our community.

The prestigious Central Coast Women in Art Exhibition presented by Tuggerah Lakes Art Society will launch 8 March at 6pm at The Entrance Community Centre and the exhibition will run from 9 – 24 March. The exhibition highlights regional female



CWA of NSW Tuggerah Lakes

artists including art, sculpture, and photography with all of the exhibits available for sale.

An Artisan Market 9 March will showcase local artisans. There will be artwork, candles, diffusers, beeswax, honey, jewellery and more. CWA of NSW Tuggerah Lakes Branch will be selling a selection of cakes, jams, pickles and their renowned Devonshire Teas, as well as a selection of handicraft items.

There will be entertainment throughout the day and the very popular Yarn Bombing Art Installation will be present again this year throughout the complex.

Extra information is available on the Festival Facebook page.

<https://www.facebook.com/ccfestivalwomen/>

Margaret Heathcote  
Central Coast International Women's Day Combined Committee

CUSTOM DESIGN | BUILDINGS | EXTENSIONS | ALTERATIONS | DECKS |   



CONSTRUCTION

0410 100 616 | [kim@kdfconstruction.com.au](mailto:kim@kdfconstruction.com.au) | LIC NO. 267735C



**Sustainable Natives**  
(wholesale production nursery)  
94 Keightley Avenue, Somersby - Sales by appointment.  
Contact Jonathan Steeds on 0415465162  
[jonathan@sustainablenatives.com.au](mailto:jonathan@sustainablenatives.com.au)  
or [Olga@sustainablenatives.com.au](mailto:Olga@sustainablenatives.com.au)  
web: [www.sustainablenatives.com.au](http://www.sustainablenatives.com.au)

We produce a large range of Australian Natives including local species. We supply retail nurseries, landscapers, bush regeneration projects, developers and local property owners with tubestock to semi advanced plants.  
We offer a design (landscape architecture drawings)/consultation service for your property to add more natives to your landscape.

## STOLEN TRACTOR



Tractor stolen from a property in Lackersteens Rd. Somersby between 29th Jan and 2nd Feb

Please contact Police if found or if you have any information (Gosford Police 4323 5599)

Brand: Dongfeng Model: BZ-45  
Serial No. DFAM 1320JJ0001764





**Your Very Own Fairytale!**  
**1865 Peats Ridge Road, Peats Ridge**

5 2 3 1 13 ac

Escape to your very own castle on this expansive 5.62 ha (13 acre approx.) property. Enter this property through the beautifully landscaped park-like gardens giving it a modern and inviting feel.

With 5 spacious bedrooms, including a master suite with an ensuite bathroom, there is plenty of room for the whole family.



Expressions of interest

**Country on the Coast - Misty Ridge**  
**38 William Lane, Little Jilliby**

4 3 8 1 33 ac

This property is an oasis of privacy and sophistication, where every detail has been meticulously designed for an unparalleled living experience. Immerse yourself in the beauty of nature, enjoy the luxury amenities, and create lasting memories in this one-of-a-kind retreat.



**Your leaders in lifestyle property.**

stonerealestate.com.au  
**Lifestyle Central Coast**  
02 4315 2922  
lifestylecentralcoast@stonerealestate.com



**Shaun Coffey**  
0417 400 556



**Scott Wall**  
0413 965 616



# UP HIGH OVER SPENCER

A 10km Walking tour on Sunday 24th March adventuring into rarely visited landscapes above Spencer to view history from on high and appreciate indigenous use of land and deep time.

On this exploration of the varied landscapes behind Spencer village to the top of the ridge we pass through

open forests, heath land and visit a hanging swamp learning to identify some plant community species.

Enjoy freshly brewed Billy tea by a waterfall before investigating the caves, overhangs and regrowth after the 2019/2020 fires.

Heading up the sandstone bluff

we view history from on high with spectacular views looking out towards Dyarubbin (the Hawkesbury River) and into deep time. Ascending to the ridge brings forth new plant communities, bird species and evidence of indigenous engravings along the plateau.

Our walking guide Mike Breheny has lived in and explored the Mangrove Creek area for over 30 years gaining extensive geographical and botanical knowledge that he loves sharing with others.

As an experienced outdoor guide he has led bush walks and run leadership courses in and around the Hawkesbury River and is an active member of Central Coast Birders. Mike is joined by local historian Dr Bernadette Flynn who brings a rich knowledge of the public and social history of the Mangrove Creek catchment area.

Tour starting from the Hawkesbury Duck, Spencer into Dharug Footslopes and along the sandstone ridges

Time: 9.00am-4.00pm

Further information: [www.heritageventures.com.au/uphigh2024](http://www.heritageventures.com.au/uphigh2024)

Or phone 0447545271

Cost: \$85

Heritage Ventures  
web: [heritageventures.com.au](http://heritageventures.com.au)



Taking in the view overlooking Spencer



From planning to completion and much more

from a professional and experienced company.



COMMERCIAL | RURAL | RESIDENTIAL

Phone: 02 4312 7613

[info@completesheddevelopments.com.au](mailto:info@completesheddevelopments.com.au)

[www.completesheddevelopments.com.au](http://www.completesheddevelopments.com.au)

PLANNING • EARTHWORKS • CONCRETE • SHED KITS • INSTALLATION

## The Grass Cutters

- Slashing
- Rock picking
- Farm cleaning and clearing
- Cultivation and more
- Obligation-free quotes



Call 0419 412 993

Email [pat@thegrasscuttersrus.com](mailto:pat@thegrasscuttersrus.com)

See us in action at: [thegrasscuttersrus.com](http://thegrasscuttersrus.com)

## On The Go Constructions Pty Ltd

Specializing in the building of chicken sheds

Charlie Muscat is well known in the industry, with over 12 years experience and has a reputation for quality workmanship.

- \* New Chicken Sheds \* Tunnel Conversions \* Roofing
- \* Machinery/Farm Sheds/Stables/Lofts/Piggeries \* Coolrooms
- \* All Fabricating services - All frames & trusses are fabricated by On The Go Constructions to Engineer specifications.

Call Charlie on 4374 1114 or 0408 684 719

**VISION FOR LIFE...**

For all your concrete & pumping services, call Louis on 0418 409 576



# Local Sporting Champions And Para Champions Recognised

Five Local Sporting Champions and one Local Para Champion have been recognised for their sporting achievements during a special morning tea hosted by the Federal Member for Robertson, Dr Gordon Reid MP.

The morning tea took place on Monday January 29 and acknowledged local sportspeople who have received Federal Government support through the Local Sporting Champions Program and the Local Para Champions Program.

Each sportsperson received financial support to compete at state, national, or international championships.

Dr Gordon Reid MP said “Listening to them discuss details about their recent sporting championships, as well as their upcoming championships, was insightful.

“I would like to again wish every Local Sporting Champion and Local Para Champion all the very best in their sporting endeavours”, Dr Reid said.

The Following Local Sporting Champions and Local Para Champion attended:

- Local Sporting Champion – Lily Wade – Bensville – AVYC Australian Youth Volleyball Championship.
- Local Sporting Champion – Olivia Shannon – Umina Beach – Australian Junior Surfing Titles Phillip Island.
- Local Sporting Champion – Charlie Welsh – Central Mangrove – 2023 Pony Club Australia Pet Stock Nationals.
- Local Sporting Champion – Kody Wrench – Daleys Point – 2023 Australian All Schools Track & Field Championships.
- Local Sporting Champion – Chelsea Culverson – Empire Bay – National Schoolgirls Netball Championships.
- Local Para Champion – Daniel Frazer – Killcare Heights – Australian Goalball Competition.

For more information about the Local Sporting Champions Program and the Local Para Champions Program, visit: [https://www.sportaus.gov.au/grants\\_and\\_funding/local\\_sporting\\_champions](https://www.sportaus.gov.au/grants_and_funding/local_sporting_champions)

Media Release from the Office of Dr Gordon Reid MP, Federal Member for Robertson



Dr Reid with (Front L-R) Lily Wade, Olivia Shannon, Charlie Welsh, Chelsea Culverson (Back L-R) Kody Wrench, Daniel Frazer

**24 Burns Road, Ourimbah 2258**  
beside M1 Interchange

**02 4362 2236**  
c.boes@hotmail.com  
www.bigflower.com.au

**The Biggest Nursery on the Central Coast - 10 Acres!**  
**Open Tue to Fri 9am-4pm Sat/Sun 9am-4pm Closed Mondays**



**OPEN 7 DAYS**  
**40 YEARS LOCAL**

**VC DENTAL**  
Care For Life

**ACCREDITED**

General Dentistry | Emergency Care | Cosmetic Dentistry  
Orthodontics & Invisalign | Dental Implants | Oral Surgery  
Sleep Dentistry IV Sedation | Wisdom Teeth Removal  
3D CT Scanning | CEREC same-day ceramic restorations

**NEW PATIENTS**  
Comprehensive checkup & clean  
Includes up to 5 x-rays  
**No Gap** (with health insurance) or \$290

**OFFERS (all patients)**  
Free orthodontic consultation  
Free dental implant consultation  
Free cosmetic makeover consultation  
Sport mouthguards: **No Gap** or \$99

**FINANCE**  
We bulk bill the Medicare CDBS  
Zip Pay & Zip Money payment plans  
We partner with **SuperCare**

02 4323 1933 | [www.vcdental.com.au](http://www.vcdental.com.au)  
Suite 10, 36-40 Victoria Street, East Gosford NSW 2250

# CWA News

## Mangrove Mountain Evening Branch

### John the Water Diviner

On Tuesday 23 January, John the Water Diviner was invited to our Branch Activity Meeting.

John shared with us, that he first learnt water divining in Lightning Ridge more than 40 years ago.

Some of the important points John shared were:-

1. To find water, follow the living Gum Trees. Healthy Gum trees transpire around 200 litres of water every day and therefore need water to survive.
2. If you place your hand on a Gum tree (no bark) the tree is cool to the touch.
3. When using divining rods, if the rods cross, running water is underground. (you can trace the line until the rods separate)
4. Divining rods will find buried items in the ground, due to the disturbance in the soil and will spread outwards.

John gave us a great practical display of divining, then sent everyone out to have some fun using their own rods.

Thank you to Norman Cook for



*John receives a gift from the CWA, presented by Tracey*

## SOMERSBY ANIMAL HOSPITAL

Dr. Robin Crisman & the SAH veterinary team  
**79-b Howes Road, Somersby**

- A full service, purpose built veterinary hospital.
- Large and small animal consults incl. horse repro.
  - House and farm visits.

**Call us on: 4372 1799**

[www.sahvet.com.au](http://www.sahvet.com.au)  
 visit us on Facebook

## Kulnura Computers Supplies & Services

4373 1237

- ❖ Custom Built Computer Systems for the Home - Office - Extreme Gaming
- ❖ Computer Repairs - Virus removal
- ❖ Upgrades
- ❖ Software - Accessories
- ❖ Electronic components



### Services:

- Site Levelling
- Land Clearing
- Horse Arenas
- Roadways
- Certified Fill Material

### Machines:

- Excavators / Augers
- Posi Track with Laser Level Grader
- Dozer
- Truck & Trailer Tippers

**Michael Schembri**  
**0419 236 788**

Follow us  



making the divining rods and the MMEB ladies that provided a light supper.

Thanks John – we look forward to hearing your next talk soon.

*Tracey Cook  
Mangrove Mountain Evening Branch  
Branch Agricultural and Environmental  
Officer*

### Monthly Meeting

In February, we brought our meeting forward a week early, as some of our members couldn't make it on the second Tuesday.

Catherine and Daniel were kind enough to open their home to us. We met at Central Mangrove and enjoyed a pot luck dinner of Bruschetta, Lasagne, Mini Quiches, Crepes & fresh fruit, Portuguese Tarts and Homemade Avocado Ice-cream. Yummy!

We then held our meeting and some of the planning and discussions were:

- Finalising our \$200 donation to the MM Country Fair for Handicraft & Cookery Competition Prizes
- Group outing to 'The Little Snail' Restaurant at Pyrmont Bay to celebrate France as this year's Country of Study.
- Mangrove Mountain Farmers and Artisans Market: Grand opening on Sunday 3rd March from 9-3pm and the first Sunday of every month at Mangrove Mountain Hall. Local CWA Branches will be selling Devonshire teas and preserves. We have a good variety of Jams, Pickles, Relishes, Chutney's ready to go with Lemon Butter being made close to the date.
- Judy and Karen D have been busy

making Chutneys and Jams from Fig's and Plum's grown here on the Mountain.

- Proposed AG & INTERNATIONAL DAY hosted by Peats Ridge and Mangrove Mountain Branches June/July 9-2pm including lunch. Date & venue TBA. With talks on Microbats, Fungi and Seaweed including celebration of our Country of Study, being France.
- Tue 13th February – demonstration on how to make Portuguese Tarts at the MM Union Church Hall 4-8pm (we may have an early mark)
- 27th February – demonstration on how to make Lemon Butter at the MM Union Church Hall 4-8pm

Kind regards,  
*Judy Betteridge  
Mangrove Mountain Evening Branch  
President*

**CNS Electrical**  
Lic No. 214132C



Your local Electrical Contractors on the mountain, specialising in Rural, Domestic, Commercial and Industrial works, including:  
Excavation, Trenching, Mains & Sub-mains, Voltage Calculations & Future Planning.

**Call Cameron for a quote on: 0438 695 600**  
Office: 0480 467 894  
Email: [admin@cnsselectrical.com.au](mailto:admin@cnsselectrical.com.au)

**OUTLAND Mechanical & Maintenance Service**  
Licence No. MVRL54125 ABN 14814837840



**Mobile Diesel Mechanic**

- Specialising in Small Fleet Diesel Service
- Tractors • Farm Machinery • Mowers
- Earthmoving Machinery
- Welding

**John: 0427 660 752 [jlhellyer67@gmail.com](mailto:jlhellyer67@gmail.com)**

## UPCOMING CATTLE AUCTIONS

**Maitland Regional Saleyards**

- Weekly Monday Liveweight Cattle Sales 9am, followed by Calves, Pigs & Sheep from 12 noon.
- Monthly Store Cattle Sale Saturday February 17th from 12 noon.

**Gloucester Saleyards**

- Fortnightly Thursday Store Cattle Sale Feb 15th & 29th 11am.

**Wollombi Hobby Farmer's Sale**  
Wollombi Saleyards, Saturday 24th February  
Commencing 10am Selling livestock, machinery, antiques and everything in between

Feedlots - Abattoirs - Paddock to Paddock Sales  
Clearing Sales - Rural Property Sales

Follow us on Facebook or join our e-list on  
[www.bowelidbury.com.au](http://www.bowelidbury.com.au)



**Bowe & Lidbury Pty Ltd**  
**(02) 49 327 066**

*Peats Ridge*  
**AUTO ELECTRICS**  
Stephen Andrews Lic. No.: MVRL22840

- Electrical Repairs
- Starter Motors & Alternators
- Lighting
- Electric Brake Controls
- Dual Batteries

- Cars
- 4WD
- SUV
- Agricultural Machinery
- Caravans
- Horse Floats

Plus an extensive range of parts and accessories in stock



We stock quality **Century Batteries** made in Australia for local conditions

*All your battery needs at very competitive prices*

Ph: 4373 1137

1160 Peats Ridge Rd, Peats Ridge 2250

# Back to school with free home broadband

With the return of the 2024 school year, local families on the Central Coast are being encouraged to check if they are eligible for free home broadband through the Federal Labor Government's School Student Broadband Initiative (SSBI).

To ensure more Australians school students can enjoy the transformational benefit of broadband, the Government is investing \$8.8 million to connect up to 30,000 eligible families with school-aged children to the NBN.

The affordability initiative has been extended through to 31 December 2025, meaning even more families can benefit from a free home broadband connection for longer.

Currently, over 6,000 households have already been connected to free internet through the SSBI, and a further 18,000 vouchers have been issued to eligible families to get connected.

To be eligible, a family must:

- Have a child living at home and enrolled in an Australian school;
- Have no active home broadband service over the NBN network;
- Live in premises that can access a

standard NBN service.

Families interested in the SSBI can contact the National Referral Centre on 1800 954 610 (Mon-Fri, 10am-6pm AEDT) to have their eligibility assessed.

The Government is considering options to further support participating families at the end of 2025, including asking the NBN Low-Income and Digital Inclusion Forum to examine discounted products.

For more information on the SSBI, visit: [www.infrastructure.gov.au/SSBI](http://www.infrastructure.gov.au/SSBI)

The Hon Michelle Rowland MP said "As students around Australia prepare to go back to school, it is essential

they have access to reliable, fast home broadband to fully engage in online learning and connect with teachers and peers.

"Not only does this initiative support educational outcomes, it benefits entire households who can access essential digital services like telehealth and banking from home.

Dr Gordon Reid stated "The School Student Broadband Initiative ensures students can access the internet if they cannot afford to.

*Media Release from the Offices of  
The Hon Michelle Rowland MP  
Minister for Communications and  
Dr Gordon Reid MP  
Federal Member for Robertson*



*Dr Reid speaks with student at Pretty Beach Public School*

## PRINTING SERVICES

Lynwood Press

Your local printing service



- ✧ Flyers
- ✧ Booklets
- ✧ Labels
- ✧ Business Cards
- ✧ Stationery
- ✧ Duplicate Books

✧ **Banners, Signs & Displays**

All Types of Printing  
Design Service, Scanning,  
Colour Copying up to A3



Ph/Fax: 4374 1039 Mob: 0412 669 649  
Email: [enquiries@cnews1.com.au](mailto:enquiries@cnews1.com.au)

*Publishers of the "Community News"*

## FABIAN FARM

*Cell Grown Seedlings*

**"OUR SEEDLINGS ARE SECOND TO NONE  
THERE IS NO SECOND CHOICE"**



OVER 50 YEARS GROWING EXPERIENCE  
**Elwyn and Dallas Fabian**

**Office: 02 4374 1281**

**Fax: 02 4374 1011**

**Elwyn: 0418 432 477**

**Dallas: 0417 285 047**

**191 Waratah Road, Mangrove Mountain, 2250**



**Is your family tree missing ancestors?  
Are you not sure where to start?**

**Central Coast Family History Society**  
is conducting a genealogy course  
on the following dates -

Friday, February 16th, 2024 - 9.30am-12.30pm  
(Getting started)

Friday, February 23rd, 2024 - 9.30am-12.30pm  
(Searching online)

Friday, March 1st, 2024 - 9.30am-12.30pm  
(Understanding DNA)



**Let's start  
filling your  
tree!!**

**The course will be held at Mangrove Mountain Computer Club  
6 Waratah Road, Mangrove Mountain**

**To book (essential), contact CCFHS**

**Tuesday - Friday, 9.30am-2.00pm - 4324 5164**

**admin@centralcoastfhs.org.au** (Accept card payment over phone)

**Cost: \$25 per session - handouts/starter kit and morning tea provided**

**Bring your own laptop if you would like to work on that.**

## **WARD Septics**

### **Septic Tank Cleaning**

- \*New Vaccum Truck that can pump 100 metres away from tank.
- \*Plumbers Jetter attached for clearing blockages in sewer pipes.
- \*We now have a small Vaccum Truck for those tight difficult pump outs.
- \*Water Tank Cleaning.

**\* And Even Cheaper Rates  
For You With A Neighbour**

**Call Paul For More Info**

**0438 315 514**

**SepticCleaning.com.au**

## **FILMOR ELECTRICAL**

Lic. No. EC37248

*Commercial, Industrial  
Domestic*



**24 Hour Service**

**Phil Moore**

**Phone: 4372 1200**

**Mobile — 0407 239 920**

ABN 60 003 402 364

**MDS**  
MOUNTAIN DEVELOPMENT  
SOLUTIONS

### **SCREW PILING**

**RURAL: TRACK LOADER & EXCAVATOR HIRE**

**ROAD & DRAINAGE REPAIRS**

**ROCK & BLOCK RETAINING WALL  
SUPPLIED & BUILT**

**0417 479 525**

**John White**

## REGULAR ACTIVITIES & MEETINGS

### RURAL FIRE SERVICES

Bucketty RFS	Weekend Training Station Maintenance General Meeting	3rd Sat, 9am-12 pm, breakfast 8.30am Every Thurs as required, generally 10am-1pm 3rd Sat in even months, at 1pm, All welcome bucketty@lowerhunterffrs.com.au 4998 8130
Calga-Mt. White RFS	General meeting Training Information & updates Contact	3rd Mon of the month, 7.30pm all welcome Every Monday 6.30 except public holidays Facebook.com/calga/mtwhiteruralfirebrigade/ Captain.calgamwhite@ccrfs.org.au - Zack Winslade.
Kulnura VBFB at Greta Rd Station	General meeting Training	1st Wednesday of the month, 7.30pm 3rd Wednesday of the month 7.00pm
Mangrove Mountain RFS Bloodtree Rd	General Meeting Training / Maintenance	Last Wednesday of the month, 7 pm All Wednesday's except last of month, 7 pm
Spencer RFS	General Meeting Training Junior Training	2nd Monday of the month Meeting 6.30pm 3rd Monday Maintenance 6:30pm 4th Monday Training 6:30pm E: captain.spencer@ccrfs.org.au Alison Wade 0415 668953. 4778 Wisemans Ferry Rd
Somersby RFS	General Meeting Training/Maintenance	First Wed of the month 7.30pm at the Station Every Wed night 7.30 at the Station (except before Wed general meeting)
Yarramalong RFS		Information: <a href="http://www.facebook.com/YarramalongRuralFireBrigade/">www.facebook.com/ YarramalongRuralFireBrigade/</a> Phone contacts: 0406 360588 or 0418 280764 Email: <a href="mailto:volunteer@yarramalongrfs.org.au">volunteer@yarramalongrfs.org.au</a>

### COMMUNITY & SOCIAL

Central Coast Plateau Chamber of Commerce	First Tuesday each month 7.00PM MMMC
Coastlink Friendship Group	Wed 9.30am-2pm at the Health Centre, Nurses Rd, Central Mangrove
Country Women's Association (Somersby)	Second Wed of each month, at Somersby Hall Wiseman's Ferry Road, Somersby, contact Sue, 43721280 or 0407768000.
Country Women's Association (Peats Ridge & District)	First Monday of the month at Community Hall, Peats Ridge School. Any enquiries please contact Christine 0419 400163.
Country Women's Association (Mangrove Mountain Evening Branch)	2nd & 4th Tues of the month, 4-8pm at Mangrove Mtn Union Church, 2154 Wisemans Ferry Rd, MMtn. General meeting 6pm 2nd Tues. Ph Judy 43771728
Gosford North Inner Wheel club	2nd Wed each month 7pm at Phillip House in Kariong. Contact: Glenis Ph: 0400 486 760
Gosford World Vision Community Group	4th Tues 11am in Presbyterian Church, West Gosford Contact: Glenis Ph: 0400 586 760. <a href="https://permacultureecc.org.au/">https://permacultureecc.org.au/</a>
Permaculture Central Coast	Second Monday, 9.30 for 10am start. Jacqui Maxwell 0455364262 kulnuradge@gmail.com
Kulnura & District Garden Club	1st Tues, 10am to 12 at Angels Sussurri Cafe Yarramalong. Margaret Dale 0411104770
Ladies of the Valley Morning Tea	1st & 3rd Tue, Mangrove Mtn Hall, 6-8pm Contact Kim & Leila 0401516501
Mangrove Mountain Singers	1st Thurs of the Month, 7.30pm, Mangrove Mtn Hall. Contact: <a href="mailto:meppcinc@gmail.com">meppcinc@gmail.com</a> , 0412669649
Mangrove Mountain & Districts Community Group Meeting	3rd Thu of mth except Jan, 7pm, at The Hub of Mangrove Mtn. Pres- Shane 0417 436 529 <a href="http://www.mountaindistrictsassociation.com.au">www.mountaindistrictsassociation.com.au</a> <a href="mailto:secretary@mountaindistrictsassociation.com.au">secretary@mountaindistrictsassociation.com.au</a>
Mangrove Emergency Planning & Communications Committee	Second Tuesday of the Month 6.30pm at the Mangrove Memorial Club President Marlee Maxwell Email <a href="mailto:info@rivercares.com.au">info@rivercares.com.au</a>
Mangrove Mountain Country Fair Committee Meeting	Friday 7.15am at Phillip House. 43404529
Mountain Districts Association (MDA)	President Brad Maisey, Community Meetings, 4377 1167, <a href="mailto:spencercpg2@gmail.com">spencercpg2@gmail.com</a>
Mountain District Football Club Meeting	Last Fri of month. 12.00 noon Spencer Community Centre, Jennifer Dayes 4377 1364 Articles to: <a href="mailto:spencercpg2@gmail.com">spencercpg2@gmail.com</a>
River Cares for the Lower Hawkesbury River District	Tue 9.30am-12.30pm, Kulnura Tennis Courts. Enquiries: Alison Palmer 0427731548.
Rotary Club Meeting	Every 2nd month. Check website for further details. <a href="http://www.somersbyequestrianclub.org.au">www.somersbyequestrianclub.org.au</a>
Spencer Community Progress Group Inc	Tues & Sat. 9am-5pm. Contact: Alan Hunt 4566 4626 or Adrian Acheson 0448 833 781
Spencer Community Ladies Social Club	Every Sun 8am at Peats Ridge Scout Hall, Sunday School during school terms
Newsletter	General Meeting 3rd Monday, 7.30pm at the Mangrove Mountain Union Church Hall
The Mountain Tuesday Social Tennis Group	9.30am second and fourth Sundays. Mangrove Mountain Union Church, cnr Bloodtree Rd & Wisemans Ferry Rd
Somersby Equestrian Club Club & Committee Meeting	
Wisemans Ferry Community Men's Shed	

### SPIRITUAL

Anglican Service - Mountain Districts	Every Sun 8am at Peats Ridge Scout Hall, Sunday School during school terms
Mangrove Mountain Union Church Trust	General Meeting 3rd Monday, 7.30pm at the Mangrove Mountain Union Church Hall
Mangrove Mountain Christian Service	9.30am second and fourth Sundays. Mangrove Mountain Union Church, cnr Bloodtree Rd & Wisemans Ferry Rd

(cont'd next page)

## LIVESTOCK MARKET REPORT



### Maitland Liveweight Cattle Sale 29th January 2024

A total yarding of 640 cattle, comprising of 580 trade/yearling cattle and 60 export cattle

Market remained firm to dearer with a total average increase of 5c/kg from last week.

- Light Restocker Angus steers under 180kg made a top of 415c/kg
- Restocker Angus Steers 200-300kgs made 290c/kg to 390c/kg
- Restocker Angus Steers 300 – 360kgs made 280c/kg to 365c/kg
- Restocker Angus Heifers made 250c/kg to 338c/kg
- Yearling Steers made 300c/kg to 385c/kg
- Yearling Heifers made 270c/kg to 340c/kg
- Best butcher vealers made 360c/kg
- Grown Steers made 280c/kg
- Cows made 190c/kg to 280c/kg
- Bulls made 200c/kg to 240c/kg

### Upcoming Sales

#### Maitland 34th Annual Angus Female Sale & Cooreei Angus Bull Sale

Saturday 2nd March 2024 – 10am  
Bulls – 11am Females

A/c Cooreei PTY LTD, Dungog –  
10am start - 20 outstanding quality  
Angus bulls rising 2yo, grassfed, vet  
checked, great temperament.

Cows & calves 11am start:  
A/c Innovative Processing, The  
Branch (Complete herd dispersal)  
50 Angus & Angus x Cows & calves  
– rejoined. Will be drafted into age  
groups – very quiet.

A/c Hudson Bros, Gresford  
16 Angus x Cows & calves 8yo  
Prestest Females:

A/c Rod Manning - 10 Angus x  
Brangus Heifers 2.5yo PTIC to LBW  
Avonleigh Angus Bull joined for 8  
weeks to calve from 1/5/24



10 Angus Heifers Joined from 1/1/24 to Angus

Unjoined Heifers - A/c Rod Manning.  
10 Angus Heifers 20mths U/J Skibo & Knowla blood


Now taking entries for this great annual event, this sale always represents some of the best Angus females from the Lower Hunter Valley, please contact agents to book cattle in so we can properly market them for Auction.

21st March, Mackas Beef Annual Female Sale, Commencing 11am

A friendly reminder that we are often in the area seeing clients and looking at their livestock and if you would like us to call in be sure to give us a call.

Like and share our Facebook page!  
Keep up to date with [bowelidbury.com.au](http://www.bowelidbury.com.au)

*Michael Easy & Rodney McDonald  
Bowe & Lidbury  
52 Kyle Street, Rutherford NSW 2320  
P: 02 4932 7066*



**OUR SERVICES INCLUDE:**  
Custom built homes • Granny flats  
Extensions • Carpentry services  
Renovations • Decks & Pergolas  
Waterproofing & Bathroom renovations  
Disabled modifications  
Asbestos removal  
Building maintenance

**Dane Meredith | Builder**  
0243513200  
0420906499  
[dane@ebhbuilding.com.au](mailto:dane@ebhbuilding.com.au)

## REGULAR ACTIVITIES & MEETINGS (cont'd)

**St Barnabas Christian Service**  
Yarramalong  
Serbian Orthodox  
Every Sunday, 9.30am. (Easter & Christmas Carols dates to be advised)  
2nd & 4th Sun. of the month. 10 am, followed by luncheon, tea, coffee, cakes (cost \$20).  
1184 Peats Ridge Rd, Peats Ridge

**Kariong Community Baptist Church**  
Sun @9.30am, Church & Kid's Program, Philip House, Mt Penang Gardens, Chris Clarke email [pastorkcbc@outlook.com](mailto:pastorkcbc@outlook.com)

**Divine Retreat Centre (Ph 04 6848 6782)**  
160 Hensons Road, Somersby  
[www.divineretreatcentre.org.au](http://www.divineretreatcentre.org.au)  
Daily Holy Mass 8.00am to 8.30 am  
1st Fri, 5:30pm-8:30pm Divine Mercy Friday  
1st Sat, 5.30pm-9pm, Youth Ministry 18-35yr  
Last Sun, 9am-4pm, One Day Retreat

**Catholic Service - Spencer**  
Holy Trinity Church, 2nd Sat of the month 4pm, Contact 43771374 or 43771168 as times may change each month.  
2nd & 5th Sunday of the month, 4.30pm Mass at St Michael the Archangel, Wollombi.  
Every Sat. evening vigil - 5.30pm St. Francis of Assisi Centre, 30 Lutana Rd, Somersby.  
1st Sunday each month, 11.15am St. Barnabas  
All welcome. Enq 0428 438577

- Wollombi  
- Somersby  
- Yarramalong

**YOUTH**  
Junior Girl Guides 5-10  
Girl Guides 10-15  
Kooree Guide Cabin, 5.00pm - 6.30pm Mondays in school term,  
Kooree Guide Cabin, 6.00pm-7.30pm Mondays in school term, Contact 0417451764 for further information

**Scouts, Cubs & Venturers**  
Peats Ridge Scout Hall  
Cubs meet 6.30pm - 8.30pm Wednesdays  
Scouts meet 7.00pm - 9.00pm Tuesdays  
Venturers meet 7.00pm - 9.00pm Mondays  
Contact 0460 696 941

**HISTORICAL**  
Brisbane Waters Historical Society  
25-27 Henry Kendall St., West Gosford, Ph: 4325 2270. [www.henrykendallcottage.org.au](http://www.henrykendallcottage.org.au)  
Last Sat of month. All welcome, contact Jan Kofron 0405321478 [jankofron@optusnet.com.au](mailto:jankofron@optusnet.com.au)  
2nd Sat of the month, 10.00am for 10.30, Point Clare Hall (except Jan & Dec). Contact Margaret 0409467710 or Gavin 43404435.  
3rd Fri of month 7.30pm Pearl Beach. Peggy 0411754577 [pbaboriginalhistory@gmail.com](mailto:pbaboriginalhistory@gmail.com)  
Open Sun to Thurs, 10am-2pm, other times by appt. Contact 43521886 email [info@alisonhomestead.com.au](mailto:info@alisonhomestead.com.au) website: [www.alisonhomestead.com.au](http://www.alisonhomestead.com.au)

**The Pearl Beach Aboriginal History Group**  
3rd Fri of month 7.30pm Pearl Beach. Peggy 0411754577 [pbaboriginalhistory@gmail.com](mailto:pbaboriginalhistory@gmail.com)  
Open Sun to Thurs, 10am-2pm, other times by appt. Contact 43521886 email [info@alisonhomestead.com.au](mailto:info@alisonhomestead.com.au) website: [www.alisonhomestead.com.au](http://www.alisonhomestead.com.au)

**Wyong District Museum & Historical Society**  
www.cclug.org.au - all most welcome  
1st & 3rd Thurs of month, 6:45pm to 8:45pm at Doyalson-Wyee RSL. Debbie 0421216952  
Yarramalong Hall 10am to 5pm, \$12/person. Bring along your projects. Dates & details: [stackm@skymesh.com.au](mailto:stackm@skymesh.com.au) or ph 43561196  
2nd Sat of the month Somersby Hall (10am to 2pm) cost \$5 per person Carmen 0434071305  
Last Sunday of month 2pm at Angels Sussurri Cafe Yarramalong. Contact Margaret Dale 0411104770

**ACTIVITY/HOBBY**  
Central Coast GNU/Linux Users Group  
Coastal Communicators Toastmasters  
Craft/scrapbooking  
Saturday Craft Group/Spining and bobbin lace  
Yarn group (knit, crochet etc)

**HALL BOOKINGS**  
Kulnura Hall  
Mangrove Mountain Hall  
Somersby Hall and Mountain Districts Culture and Heritage Centre  
Yarramalong school of Arts / Hall  
Contact Central Coast Council.  
Hall bookings Ryan Howard 0405416289  
Hall bookings: 0413 359 655 or AH 4373 1488  
[enquiries@yarramalonghall.org.au](mailto:enquiries@yarramalonghall.org.au)  
<https://yarramalonghall.org.au>

## Antennas - Digital

Hayward Video & Antenna Service  
**VAST Satellite Service**  
"Government approved installer"

**Ray Hayward**  
mob: 0412 685 555  
email: [Ray.Hayward@gmail.com](mailto:Ray.Hayward@gmail.com)



## ELLIS

ELECTRICAL SERVICES PTY LTD  
0411 317 506  
Commercial | Residential | Industrial

LIC# 227507C



**the springs**




**COFFEE + TEA  
WITH YOUR LOCAL MP**

**TUESDAY  
5TH OF  
MARCH**

The Springs is offering a chance to meet local MPs Emma McBride and Liesl Tesch over coffee and cake, providing an opportunity to learn about the area and Parliament. The event has a \$20 cover charge for coffee/tea and cake made by Chef Dan, with proceeds donated to local charities. RSVP if interested to:

KPRHAPS@GMAIL.COM

**1080 PEATS RIDGE ROAD, PEATS RIDGE**

**11AM - 1PM  
\$20PP**



**POSITIONS AVAILABLE**

**FARM HELP** - Farm help required for property in Yarralong Valley. Experience with cattle, pasture management, maintenance of farm machinery and equipment essential. Suit local with driver's license, good organisational skills and ability to work with other contractors.  
Diverse role, minimum 4 days per week. Phone 0491627258

**AGISTMENT**

**HORSE AGISTMENT AVAILABLE.** Full care. Group and individual paddocks with shelters. Full size sand dressage arena, grass jumping arena. Located walking distance to Peats Ridge Village and Café. Call Cameron on 0438695600.

**NOTICES**

**EXPRESSIONS OF INTEREST**  
Pilates Mat Class  
For strength, toning and flexibility  
Please call or text Melanie 0405 453 374 if you are interested to join.  
Proposed day / time Thursday 11.00am

**Mangrove Mountain & Districts Community Group**

The AGM for the MMDCG will be held on March 7th, 2024 at 7.30pm at Mangrove Hall.  
Nominations must be received by the Secretary seven (7) days prior to the meeting.

**Your LOCAL GUY for:**

**STARLINK INSTALLATION  
CCTV, WiFi,  
& MORE**



**STARLINK IS HERE**  
A free tip from me...  
STARLINK is Awesome but...  
BEFORE ordering STARLINK,  
download their APP to your  
phone, read the instructions  
and do the visibility test.  
If you pass the test, give me  
a call about installation etc.



Master Security License:  
101264  
Open Cablers License:  
55883  
Insured PI & PL.  
Over 30 years In business.  
Techniport Pty Ltd T/A  
**CLOUD SECURITY**  
Call WARREN 0407 366 444



**Bikes n Motors**

**Motor Vehicle Repairer  
Service & Repairs**

**Motorcycles \* Light Vehicles  
Cars \* ATVs \* Buggies \* Quads**

**Call & Book Now**

**PH: 0491 622 080**

1154 George Downes Drive,  
Kulnura, NSW, 2250.  
★ Behind Jerrys' Cafe ★  
bnm@bikesnmotors.com.au  
www.bikesnmotors.com.au

**PINK & BLUE  
SLIPS**  
Licence No:  
MVRL56584



## CLASSIFIED ADVERTISEMENTS

These columns will be set aside each issue for residents to advertise inexpensively and effectively in their own local paper. If you have anything you wish to sell, buy, swap, etc., ring 4374 1039 or 0412 669 649 during office hours. Rates start at \$4.00.

### WANTED

OLD BATTERIES, will pickup, phone 0413 975 107

MALE COMPANION 18 to 80 for twice weekly meeting. 0431087281

### FOR SALE

TOP QUALITY DENMAN RIVER ARENA SAND - as used at Scone and Tamworth Equestrian Centres. All sand, no clay. Call for load rate. Mark 0409 152 540

GALE'S CITRUS - Bagged Citrus trees in various sizes available ph. 4372 1408 or mobile 0421 196 631

FREE RANGE EGGS, all natural, \$5/doz ph 0412 669649

WATER LICENCE Kulnura Mangrove Mountain Ground water source 45 Megs, open to offers, call 0407761375

MEADOW HAY \$11 a bale come in lots of 15 bales 0419412993

### SERVICES AVAILABLE

#### ALL TERRAIN SLASHING

Track mounted slasher/mulcher and excavator mounted flail mower. Sloping land, fire breaks, hazard reduction of low vegetation, (lantana,etc) fence line clearing, broad acre slashing. Free quotes. Bliss Earthworx 0409456003

### SERVICES AVAILABLE

**CARPENTER/HANDYMAN/PROPERTY MAINTENANCE** - Servicing local area, Yard work, painting, odd jobs around the House. Call or Text Steve- 0401668569

#### SMALL ACRE MOWING Excavation, Environmental Remediation 0412 228 718

AIRCONDITIONING, BUILDING, CARPENTRY - Local service, 14yrs experience in aircon, 22yrs experience in building & carpentry. Call Ken 0412 842 920

Laurie Douglass Plumbing  
Plumber, Drainer, Gasfitter, Roofer -  
Ph 4373 1257 Mob 0407 008 488

QHHT Level 2 Practitioner and Soul Speak Practitioner. Also offering:

- group regressions (in person or online)
- "surrogate" sessions (in person)
- pendulum dowsing classes (group or individual, in person or online)
- spiritual/life coaching

For bookings or enquiries call Sharyn on 0408 967 507 or email [shazzaunitt@protonmail.com](mailto:shazzaunitt@protonmail.com)

#### PEATS RIDGE HAIR CUTS MEN - LADIES - CHILDREN

Wed, Thu, Fri 9am-2pm. Sat 8am-12noon  
Walk in - no appt necessary Ph 0447436558

OOST Painting Contractors - Lic 71725C  
Quality & cleanliness assured.  
For a free quote call David 4356 1449 or  
0417 234 094. Yarramalong Local

**PEST CONTROL - Servicing the local area. A.T.S. Pest Control Services Phone Tony 4373 1157 Mob: 0427 731 157**

MISTY MOUNTAIN RURAL CONTRACTORS - Earthworks, Irrigation, all services available Ph 43530990 or 0418221495

BRICKLAYING & Render repairs. Adrian 0408347737. Lic 98665C

KELLY'S KLEANING SERVICES - Servicing the Mountain & the coast. Please call Kelly on 0420541196

HORSE RUG REPAIRS - reliable prompt service. Pick-up & drop-off available for large quantities. Ph 0405 620 394

### HORSE BURIALS

Specialising in the on-site burial of your precious horse. Ph Craig 0411 2888 12

### ALL COVERS & CANVAS WORK!

Boats, Vehicles & Horse floats re-trimmed, cover & horse rug repairs, no job too small! Servicing the mountains & the valleys. Call Alan on 0414 993 669 or Louise on 0410 646 200. located at Yarramalong Road Wyong Creek.

### TOWN 'N COUNTRY FLOOR SANDING & POLISHING

New & old floor boards, parquetry, verandahs, stairs, walls ceilings, re-coating, staining & painting etc. free quote ph Stuart 0400076261

# WATER BORES

Local drilling company  
based at Ourimbah

Contact: Paul Slade  
Ph/Txt: 0408 471247

email:  
[Sladedrill@bigpond.com](mailto:Sladedrill@bigpond.com)



Mountain Medicine

Providing the local community with a collaborative approach to multidisciplinary healthcare.

#### Dr Christine Wade

B.Med (Hons) FRACGP

#### Dr Arsenios Magdas

MD B.MedSc

#### Pathology - Douglass Hanly Moir

Mon & Fri 8.30am to 1.30pm  
Wednesday 12.00pm to 5:00pm  
Ph: 43741942

#### Torin O' Grady

Podiatry (Foot Care)



40 Niclins Rd, Mangrove Mountain NSW 2250  
**ph 4374 1252**

All Allied Health Professionals are EPC accredited. Medicare rebates are available if you have a GP Management Plan with Team Care arrangements. Please enquire for more details.

Contractors Licence No: 367849C

# WATERMAN EXCAVATIONS PH: 0438 617 851

Mulching Horse Arenas Certified Fill

Admin@Watermanexcavations.com.au  
www.watermanexcavations.com.au

- Excavators - Tipplers - Grader - Dozer - PoziTrack - 6X6 Dump Truck

## CROSSROADS AUTOMOTIVES

Terry Kyriacou

Mon - Fri: 7:30am - 5:00pm

Saturday: 7:30am - 12:00pm

SPARE PARTS

LOG BOOK SERVICES

MECHANICAL REPAIRS

Ph: 4373 1774



Cnr of Wisemans Ferry Rd. & George Downes Drive, Central Mangrove

AUTHORISED INSPECTION STATION (INCL LPG)

## MLS MOUNTAIN LANDSCAPE SUPPLIES

SANDS SOILS MULCHES WOOD-CHIPS GRAVELS PEBBLES  
PLANT NURSERY - GIFTS - FIREWOOD

DELIVERY AVAILABLE 6 DAYS A WEEK

PH: 4376 1055

988 George Downes Drive Kulnura  
mls@live.com.au



• AGRICULTURE • INDUSTRIAL • DOMESTIC

Licence No - 269888C

**\*24 HOUR EMERGENCY CALLOUT SERVICE\***

Ph: 4322 3333

Fax: 43223433

Email: sales@girrigation.com.au

Web: www.girrigation.com.au

Unit 2 254 Manns Road, West Gosford NSW 2250



### K&T PROPERTY CONSULTANTS PTY LTD

Real Estate Valuers & Land Economists

#### ROBERT MEGGS FAPI CPV

providing independent property valuation advice, including:-

- Stamp Duty, CGT, GST & Retrospective Valuations
- Probate & Estate Valuations • Insurance Valuations
- Valuations for Family Law • Pre-Sale/Auction Advice
- Land Value & Compulsory Acquisition Valuations

500 Kyola Road  
KULNURA NSW 2250

Email: ktpropty@ozemail.com.au

Telephone (02) 4376 1451

Facsimilie (02) 4376 1452

Mobile 0429 44 33 10

### Misty Mountain Rural Property Development Services



- agricultural consultants
- pasture improvement
- fertilizer spreading
- weed spraying
- all tractor work 4/2WD
- soil conditioning
- irrigation install/design
- fencing & stables
- crop planning & planting & all excavations
- concrete slabs Lic. R94321
- property evaluation & planning & management
- fork lift hire

Ex-Dept. Agriculture Officer with 45 years  
experience in the local district.

Greg Koutoulas is the man to call on 0418 221 495



### Stop Water Shop

Authorised Dealer

ONGA, DAVEY and  
GRUNDFOS PUMPS



### K. W. & M. E. WEST Pty. Ltd.

1650 Wisemans Ferry Road,

Central Mangrove

Phone 4373 1164 Fax 4373 1049

### PUMP REPAIRS AND SERVICE

#### Trading Hours

Mon - Fri

7.30 am - 5 pm

Sat 7.30 am - 12 noon

Closed Public Holidays