

COMMUNITY NEWS

No. 934 Ph: 4374 1039 Mo: 0412 669 649 Email: enquiries@cnews1.com.au Web: cnews1.com.au 1st December 2023



Mountain Before and After School Care Inc. – update.

The new committee is progressing well ensuring the frame work is in place to commence the service at the start of week one of first term 2024. We will continue operating from Kulnura Public School and invite families from Central Mangrove and Peats Ridge Public Schools to use the service.

Currently we are in need of the following:

- ✓ A volunteer for the Treasurers' position.
- ✓ A qualified early learning teacher (part time) to supplement our existing staff member.
- ✓ Donations to put towards

ASSISTANCE SOUGHT TO RECOVER MISSING ITEMS

After the Mangrove Mountain Union Church was returned to the community, a stocktake was conducted and has confirmed that the following items are missing:

- 1 Engraved pewter vase (given in gratitude by parents at the christening of their daughter)
- 1 Original Bible (donated to church in 1912 by the Kelynack family)
- 1 Mini Lectern (for use during communion)
- 1 Lectern with plaque (unstained, unvarnished)
- Altar cloths (several)
- 1 Communion Cup, engraved

operating costs, as this is a not for profit charitable organisation.

✓ An accountant wanting to support us by volunteering their time for all the financial jobs like book work, BAS, wages, annual audits amongst other duties.

If you are in a position to help out please PM on our Facebook page or contact Michael Kidd 0439 761 440.

- 1 Communion Plate, engraved
- Communion glasses (many)
- 5 Communion trays
- Approx. 90 hymn books
- 3 Boxes of noticeboard letters for external church sign
- 1 Remote and manuals for Samsung Air-conditioners
- 1 Lenovo Laptop
- 1 Logitech Remote Control
- 10 Brown Stackable Chairs
- 1 Santoku Knife Set (5 items)
- 1 Straw broom
- 1 Wooden table
- Set of bunting

If anyone has any information about these items please let us know by email: MMUCSecretary@outlook.com



MMUC Trustee

EXPRESSIONS OF INTEREST: MANGROVE MOUNTAIN MARKETS

The Mangrove Mountain & Districts Community Group looking to restart the Mangrove Mountain Markets in the New Year.

Expressions of interests are invited from persons interested in having a stall, buskers etc.

Help is also needed to organise and promote the markets.

It is proposed to hold the markets monthly, on either a Saturday or Sunday.

To register or for information please email to: mangrovemountainhall@gmail.com

www.facebook.com/MangroveMountainHall

REMINDERS FOR YOUR DIARY

MMtn Country Fair AGM will be held on Thursday 14th December 7pm at The Hub.

MMUC Trust - AGM & Special General Meeting Monday 19th Feb 2024

STOP!

Next issue Published 15th December 2023

**** DEADLINE ****

**** 8th December '23 ****

Send adverts & copy by email, website or post. Email, website, FB or phone for enquiries

Community Christmas Carols

Dec. 23, 6.30pm to 8pm




MANGROVE MOUNTAIN UNION CHURCH

To be held Outdoors
(or in the Church Hall if raining)

Join in with your community to
Celebrate the birth of Christ and the
return of the Union Church to the Community

Catch up with friends & acquaintances
& put your vocal chords to good use!

All Welcome

Sing along to words on the screen

Treats for the kids!



Community Grateful but Perplexed?

After seeing the sizeable road work crews cleaning up the shoulders along the edges of the sealed roads such as Wisemans Ferry Road, many residents were left scratching their heads.

It was great to see the local roads get some attention. I mean after areas nearer the coast, east of the M1 (the customary demarcation line), got new footpaths, kerb & guttering, beachfront walkways etc, our worn out, dilapidated "main" roads were finally benefitting from the crumbs after all the council rate rises.

It's a shame though that the actual road surfaces were not resealed, except in patches, with weakened areas left to slowly deteriorate and morph into the next series of potholes.

Observations by locals:

"The grass was helping hold the edge of the road together, now the area has been disturbed and will be soft"

"When I was young (not long ago)



from the "Austin Daily Herald"

Laurie Douglas and his Grader would do in an hour what a small excavator and half a dozen paid bystanders in shiny trucks can now do in a day. The outcomes, however, were very different. Laurie left a smooth drain and edging up to the tar. The new method seems to landscape the potholes.

The regular run with a slasher seemed to go ok when that replaced the Grader but it seems the slasher was sold to pay for the new contractor and they'll eventually think of something else to deal with the fire hazard. The brand new road edges actually look dangerous to me but: 'Dictator knows best!'

"It's quite laughable until you realise that our rates have nearly doubled to be able to enjoy this waste and dangerous road conditions. With a year to go before there's someone elected that you could approach about this, I suggest it's time for the State government to sack our current council-of-one and try something different."

All jokes aside ('cause no one's laughing), the M3 divide is alarming. Just consider Wisemans Ferry Road, there are several badly damaged sections, some that have been left half repaired for years. Council, State and Federal governments pass the buck and it all goes on the to-do list.

Community Comment



P&S WILLIAMS T/A

CENTRAL COAST TRACTORS P/L

Tractor & mower service, repairs & parts
 Parts for all brands
 Tractor accessories
 Implements, blades and spares

Leading brand of Lubricants

Agricultural Supplies, Plumbing & Fittings

Tractor School
 Safety, Operation, Implements & attachments
 Maintenance & servicing

General Engineering
 Modifications & fabrication, Welding

Kiotti's parent company, Daedong Industrial Co Ltd, has led the way in developing world-class farming machinery for many decades. Today Kiotti/Daedong products have a secure global market across 60 countries.



CROSSFIRE **Dleo-Mac** **rapid spray**

CASTROL **Silvan** **AIR LIQUIDE**

Hardi Jarrett Southern Cross Kanga



DISTRIBUTOR FOR KIOTTI TRACTORS AND MOWERS ON THE CENTRAL COAST

www.centralcoasttractors.com.au

Tel: 4372 1457

enquiries@centralcoasttractors.com.au

Fax: 4372 1495



OUR SERVICES INCLUDE:

Custom built homes • Granny flats
Extensions • Carpentry services
Renovations • Decks & Pergolas
Waterproofing & Bathroom
renovations
Disabled modifications
Asbestos removal
Building maintenance

Dane Meredith | Builder

0243513200

0420906499

dane@ebhbuilding.com.au

FRIDAY NIGHT FAMILY FILM

“Eternity”

The 1994 B&W Biography of Arthur Stace, a reformed alcoholic, who spent over 40 years of his life wilfully writing the word “Eternity” on the footpaths of Sydney. Told with humour and compassion, and accompanied by an achingly beautiful music score by Ross Edwards, this is an inspiring study of the human spirit at its most open and hopeful. Impossible to forget and powerful beyond words.

AT THE MANGROVE MOUNTAIN UNION CHURCH

8th DECEMBER FROM 6.30PM FILM AT 7PM

FREE ENTRY, ALL WELCOME

Tea, Coffee, Cordial & Snacks For Sale

Sponsored by the Mountain Districts Christian Church Inc.

More information – call Robert Meggs 0429 443 310

JOHN DRAPER & SON ELECTRICAL CONTRACTORS

Licence No. 65229C

**Commercial, Industrial,
Domestic, Rural Installation**

*Serving the Mountain and Districts
for over 50 years*

For prompt service and quotes

Peter: 43761141, Mobile 0428 732 623

John: 4376 1346, Mobile 0427 106 859

TKG Welding & Fabrication

- ✦ Mobile welding ✦ Fully equipped service truck
- ✦ Heavy machinery repair & modifications
 - ✦ Air arc gouging ✦ Hard facing
 - ✦ Steel horse & cattle yards
- ✦ Sheet metal work, gates and railings

Tim Green 0427 462 717

timdgreen1971@gmail.com

www.tkgweldingandfabrication.com

MANGROVE MOUNTAIN PHARMACY



Monday – Friday: 9am-7pm
Saturday: 9am-3pm Sunday: Closed

**Free Flu Vaccine
Now Available
No Bookings Required**

- ◆ Free webster packing and all your pharmacy needs
- ◆ Household goods and gifts
- ◆ Milk, cold drinks
- ◆ Parcel point outlet

3/1 Waratah Road, Mangrove Mountain, NSW 2250

Phone: (02) 4374 1457 Fax: (02) 4374 1479

Email: mangrovemtpharmacy@gmail.com



Local Solar Power Experts

Living Off Grid
Has Never Been Easier

Brooklyn Trade Services are your local solar electricians, for both on and off-grid systems.

Our technicians are certified to install state-of-the-art solar and battery systems which are great for the environment as well as your home and or business.

Call us for a chat:

1300 319 419

www.btselectric.com.au/bts-energy



October 2023.

Hello Michael

See below,

We used Michael due to his local knowledge and contacts.

Found him friendly and easy to deal with whilst being very professional and efficient.

He found a purchaser for our property in the first week of listing before the marketing campaign commenced, which we were very happy with. Would highly recommend him.

Regards

Shayne Tanner

Michael has my permission to pass on my mobile phone number if potential sellers would like speak with me directly.

The current Real Estate market on the Mountain is the toughest I've experienced in 30 years as a Licensed Real Estate Agent.

Selling in this market requires a different approach from the normal Agent's way of thinking. It takes more than expensive glossy pamphlets, retouching photos that don't honestly represent the property and expensive marketing packages YOU HAVE TO PAY FOR — what It requires tenacity, endurance, a creative approach to selling, and above all working hard with buyers to get a sale.

If you are thinking of selling—call Michael now 4376 1440 or 0439 761 440 and discover the difference that over 30 years of selling Real Estate can bring.

MMUC - Notice of Special General Meeting and AGM

Mangrove Mountain Christian Group will hold a SGM followed by an AGM on Monday, February 19th, 2024, commencing 7.00pm at the MMUC Hall

The SGM will consider two resolutions:

1. To change the name of the association from "Mangrove Mountain Christian Group Inc" to "Trustee for the Mangrove Mountain Union Church 1914 Trust Inc."

2. To accept a revised constitution that focuses on the terms of the 1914 Trust and elevates the primacy of this Trust under which the MMUC is governed and to separate the role of the trustee from the conduct of religious services.

Note that the religious services currently being organised by the Mangrove Mountain Christian Group will continue but under the guidance of the Mountain Districts Christian Church

The AGM will follow the SGM. Nominations for the Committee are to be made in writing and delivered to the Secretary seven (7) days prior to the AGM. Nomination forms are available from the Secretary on request.

To participate in any vote a person must be a member and also be

financial. Fees are: joining fee \$1, annual membership \$2. Membership applications are also available from the Secretary.

All persons from the community are encouraged to attend, join and participate. Your involvement will ensure the ongoing success of the MMUC and prevent it from falling into the hands of persons who do not have the interests of the MMUC or community at heart.

If you have previously attended the various meetings and services to oppose the sale and support the MMUC then please once again come forward - your support is still needed.

Keith Arango, Secretary, MMUC
MMUCsecretary@outlook.com
0412 669 649

0400 403 411

Shop 8/10 Carringa Rd Kariong

Sharon and Son's family owned and run service

Quality loving, no cage Salon

facebook, instagram fetchgrooming.com.au

- Excavator with Buckets, Hammer, Auger & grabs.
- Posi track with 4in1 bucket, forks & spreader bar
- Tipper 6 ton
- Posi track slashing

Excavation - Concrete - Landscape

Facebook, Instagram
Email: blissearthworx@gmail.com
▲ Based in Somersby ▲

0409 456 003

Mangrove Mountain MEMORIAL CLUB & GOLF COURSE

WHATS ON WEEKLY

TUESDAY
BINGO from 11am
Pizza & Pasta specials starting from \$10

WEDNESDAY
MEAT RAFFLE drawn at 730pm
\$15 schnitzel night from 530pm

THURSDAY
MEMBERS BADGE DRAW drawn at 730pm
\$15 roast night from 530pm

FRIDAY
HAPPY HOUR 4-6pm
COCKTAIL HOUR 6-7pm
MEAT RAFFLE drawn at 730pm
New restaurant specials every week from 530pm

SATURDAY
POOL COMP from 630pm
entry fee \$5

Find us on Facebook & Instagram
18 Hallards Road, Central Mangrove, 2250
02 4373 1129 www.mmmclub.com.au

CHRISTMAS Raffles

JOIN US

- TOY RAFFLE •
SUNDAY 3RD DECEMBER 2PM
over \$2500 in toys & vouchers to be won & visit from Santa
- HAM RAFFLE •
FRIDAY 15TH DECEMBER 7:30PM
25 half hams to be won!
Entertainment from 8:30pm
- ROAST & HAMPER RAFFLE •
FRIDAY 22ND DECEMBER 7:30PM
over \$2000 in roast & hampers to be won!
Entertainment from 8:30pm

SOCIAL TEE TIMES AVAILABLE EVERYDAY
*excludes Wednesday & Saturday due to members comp

Helping small businesses stay cybersecure

A new digital resource, called ID Support (visit www.nsw.gov.au/id-support-nsw/small-business), aimed at helping protect NSW small businesses against identity theft and data breaches, has been launched by the NSW Government.

Designed to support businesses of all sizes, this digital resource and webpage features information and tips on how to stay cyber aware, as well as interactive learning modules and printable checklists.

Member for Gosford, Liesl Tesch MP said it was important for small businesses to be proactive when tackling cybersecurity-related issues and to remain vigilant.

“Cyber security is of real concern to Australian small businesses. Even minor cybersecurity incidents can have lasting impacts on small businesses – and sometimes the effects of these incidents can be truly devastating. It’s important to recognise that not every business is going to bounce back from the impact of what might appear to be a minor cyber security incident.

“It’s really pleasing to see – through initiatives such as ID Support from the NSW Government – that it’s becoming

MULTIPLE AWARDS FOR Tocal AT THE UPPER HUNTER BEEF BONANZA

Tocal was awarded champion carcass at the recent Upper Hunter Beef Bonanza (UHBB) Carcass Competition. It also placed first in the light-middleweight class.

Most exciting, was to see Tocal students Hannah Ireland, and Eliza McLaren participating as finalists

easier for small businesses to locate and access the information and resources that could make a real difference to cybersecurity incident prevention.”

An Australian Cyber Security Centre survey released in 2020 found 62 percent of small businesses across Australia have experienced a cyber security incident. Almost half of those surveyed rated their understanding of cyber security as ‘average’ or ‘below average’ and had poor cyber security practices.

Small businesses seeking information on how to stay cyber secure can visit www.nsw.gov.au/id-support-nsw/small-business. Businesses requiring cybersecurity support can contact ID Support NSW Advisors during business hours on 1800 001 040. Alternatively, they can fill out an online contact form, available here: <https://www.nsw.gov.au/id-support-nsw/contact-id-support>.

Another initiative being undertaken by the NSW Government to help

in the junior judging, with Hannah taking out first place. In the Junior Judging competition, Grace Nesbit also achieved a 3rd place in the Beef Appreciation Live Judging.

Tocal had a team of 14 Certificate III students, taking 14 Tocal bred Brangus steers and heifers to White Park, Scone. All students grateful for the valuable

protect NSW residents online and build cyber security awareness is the release of a new type of ‘credential technology’ that will benefit holders of MyServiceNSW accounts. This new feature informs people if their ServiceNSW login credentials have been compromised. This complements the new Password Strength Tester, launched earlier this month, which helps people create strong passwords and check whether their password has previously been disclosed in a data breach or leak.


Community members are also encouraged to visit Ms Tesch’s office at 20 Blackwall Road, Woy Woy to pick up a copy of ‘The Little Black Book of Scams’, an internationally recognised resource to help the community learn about scams.

Media Release from the Office of Liesl Tesch | Member for Gosford

Engineering & Fabrication Services

- Workshop fabrication & Welding
- Lathe/Milling/Machining at our workshop
- Steel/Stainless/Aluminium Welding
- Workshop located at Peats Ridge
- On site services

Bentley Industrial Pty Ltd
0411 052 275
Peter@BIndustrial.com.au




DMECS

SOLAR • BATTERY STORAGE • ELECTRICAL

SERVICING THE CENTRAL COAST

0404 556 811



CLEAN ENERGY COUNCIL
ACCREDITED
INSTALLER
DANIEL MOFFETT

W www.dmecelectrical.com.au

E admin@dmecelectrical.com.au

IG [dmecelectrical](https://www.instagram.com/dmecelectrical)



JEREMY AOUN

PLUMBER | GAS FITTER | ROOFER

OVER 30 YEARS EXPERIENCE
 SUPPLIER OF RAPIDPLAS TANKS

Mobile: 0424 894 225
 Licence: 134701C
 Email: aussieplumbing1@gmail.com

opportunity provided to them.

The UHBB attracts high quality cattle and tough competition, this year with 405 carcasses entered in the carcass competition and 680 beef enthusiasts competing over the weekend.

Tocal Livestock Lecturer, Emorfia Cutler, said “this event provides the opportunity to both Certificate III and Certificate IV Agriculture students to be involved in the preparation of the steers and heifer for the competition through elective units”.

Certificate IV students can develop their knowledge of livestock nutrition and mix the feed ration for the Brangus steers and heifers. Certificate IV students also worked with the Certificate III to mentor and develop students’ skills in handling and breaking in the show steers, working to break the steers in initially for Tocal Field Days.

Certificate III students then focus on preparing the cattle leading up to the Beef Bonanza and showing them during the carcass event.

Tocal Centre Manager Robert Rein said, “While the focus of the weekend is an opportunity for students to develop their knowledge of beef cattle and network with other passionate Beef Industry enthusiasts, Tocal has achieved some excellent results that provide valuable feedback for the direction of the Brangus breeding herd”.

In the live judging of cattle, two steers placed with ‘Goon’ achieving 5th place in his class and ‘Fireball’ achieved a 3rd in the Unled judging, and heifer ‘Mumma’ being selected into the final line up. In the carcass results, with cattle killed by JBS Scone, ‘G&T’ placed 4th in his class.

In the Unled Carcass competition, ‘Fireball’ placed 1st in the Light-Middleweight Class, and then took out Champion Unled Carcass with a very high MSA score of 91.51. Fireball was then awarded Champion Carcass of the Upper Hunter Beef Bonanza, which is a fantastic result for the team at Tocal College.

Tocal Centre Manager Robert Rein



LINDA RAINSFORD
PROPERTY | POWERED BY SMILE ELITE

Lifestyle Estate Experts
Servicing Mangrove Mountain and Spencer

Committed to showcasing your property to the largest possible audience with the resources of the entire Smile Elite and Sydney Country Living Group instantly available, creating a competitive edge to deliver optimal sales results.

Linda Rainsford - Principal
Class 1 Real Estate Agent / Stock and Station

M: 0408 786 528
E: linda.rainsford@smileelite.com
lindarainsfordproperty.com.au

PROUD PARTNERS WITH SYDNEY COUNTRY LIVING



said: “this is an outstanding result for staff & students and is great recognition of their hard work and commitment”.

The lead up, preparation and attending this event sees students & staff put in many hours their personal time and they are rewarded with valuable experience and industry exposure.

We select from the Tocal Breeding herd, which are a self-replacing herd of Brangus bred on site at Tocal.

Livestock Lecturers and the Beef Team work together to involve the students in all aspects of the management of the breeding herd.

Students are involved in paddock observations, calf marking, drafting, and sorting, animal health treatments, selection of AI sires for our AI program, breeding objectives and traits and the selection of replacement females.

Mr Robert Rein
Centre Manager, Tocal College

RURAL INSURANCES



If you're in need of assistance with your insurances give Shortland Insurance Brokers a call!

4324 5244

info@shortlandinsurance.com

Level 2, 27 Dane Drive GOSFORD
AFSL 236739

CUSTOM DESIGN | BUILDINGS | EXTENSIONS | ALTERATIONS | DECKS |   



KDF
CONSTRUCTION

0410 100 616 | kim@kdfconstruction.com.au | LIC NO. 267735C

Know the Answers BEFORE the Emergency

- Where is the nearest AED?
- Where is your nearest evacuation point?
- What is a "Safer Place"?
- Have you got the right items in your emergency kit?
- How will you save your pets & livestock?
- How and Who will you call for assistance?
- How can you help others?

Don't wait until an emergency knocks on your door to find out!

Members of the Mountain Community are preparing an emergency plan - to help, be involved

or contribute please contact the MEPCC by email: mepccinc@gmail.com or phone: 0412 669 649

Over the last couple of months the Red Cross has worked with community members to coordinate a series of events to improve community connectedness and encourage involvement in community led emergency plans:

- Meet your emergency services day community BBQ at Mangrove Hall
- The Wholesome Collective healthy cooking session at Mangrove Hall
- Farm First Aid course at the Memorial Club
- Community Review & Planning

session including the use of a Simtable to understand the impact of fires

- Workshop to begin preparation of a resilience and disaster recovery plan

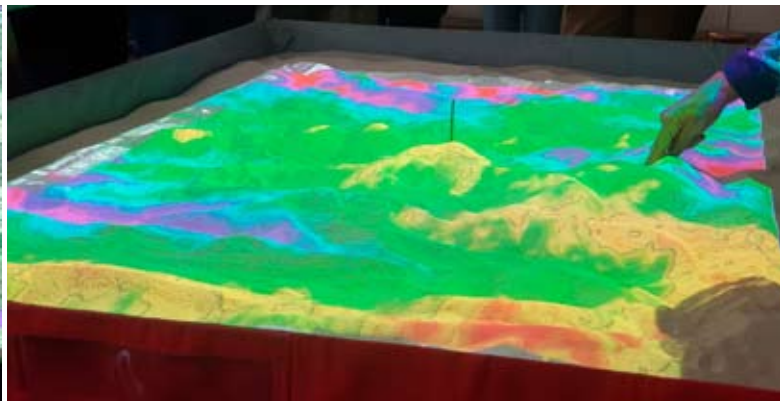
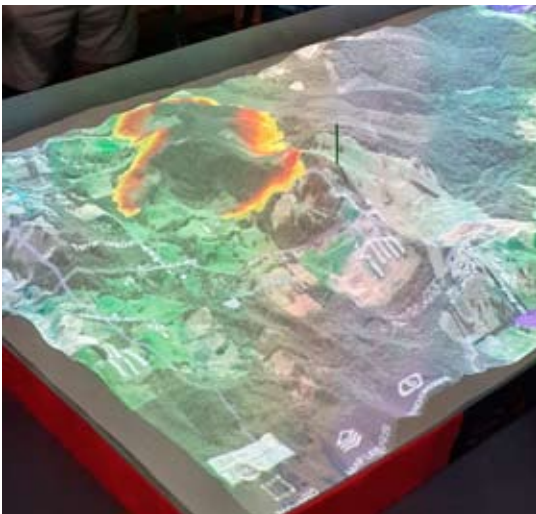
This effort is also supported by the NSW DPI, Carers NSW, Central Coast Council, Hunter JO, SES and RFS.

The Mountain Districts plan complements similar plans in adjacent districts, namely Spencer and Wollombi.

Prepare in advance for fires, floods, storms or personal emergencies.

MEPCC

mepccinc@gmail.com



Simtable showing images of the local area projected onto a sandbox
Left: the progress of a fire in a "fast forward" mode
Above: colours show the contours of the terrain, orange=highest, red=lowest

WARD Septics

Septic Tank Cleaning

- * New Vacuum Truck that can pump 100 metres away from tank.
- * Plumbers Jetter attached for clearing blockages in sewer pipes.
- * We now have a small Vacuum Truck for those tight difficult pump outs.
- * Water Tank Cleaning.

*** And Even Cheaper Rates For You With A Neighbour**

Call Paul For More Info

0438 315 514

SepticCleaning.com.au

Dr. S. ANANDASIVAM

(ANAND)

MBBS, FRACGP, AMCC

For Doctor Appointments:
Monday - Friday 9am- 5pm

Laverty Pathology Service

Available:

Monday to Friday 8:00 till 3:30

Saturday 8:30 till 12

Medicare Bulk Billing

**1639 Nurses Road
Central Mangrove, 2250**

02 4373 1914



“Beautiful Lifestyle Acres”

Build your rural paradise in the tightly held suburb of Somersby, with the ultimate mix of tranquillity and convenience. Just 5 minutes from the M1 on ramp and 10 minutes from major Central Coast facilities is this exceptional 25 acre lot, featuring two large cleared areas totalling approximately 9 acres, separated by a delightful shallow rainforest ravine.

The eastern most area is approximately 4 acres of flat land gently tilting to the North. It is surrounded by mature native vegetation for a great feeling of privacy.

Just a few metres through the rainforest and we arrive at the second, large cleared area of about 5 acres, again an ideal building location or use for grazing.

Somersby is famous for its well draining sandy loam soil, sought after for supporting horticulture or other agricultural and livestock pursuits.

There are two entrances to the property, each along newly surfaced private roads.

A DA has been granted for construction of a substantial home and pool and a large shed with mezzanine flooring.

There is a relocatable home on the property, currently being leased for \$395 per week.

Contact one of our agents | CALL 02 4324 8464



www.ccselect.com.au



Office Address

Suite 1,
2/872 Pacific Highway, Lisarow NSW 2250

P: (02) 4324 8486

E: info@ccselect.com.au

Witnesses or Information Sought

On Thursday 26 October around 1:30pm to 2:30pm an electrical cable over the road at 191 George Downes Drive was brought down by an unknown vehicle.

As the live wires were hanging over the road, the traffic was diverted via Nurses Road by the fire brigade. Ausgrid emergency team came first to remove the wire to allow traffic to resume and later in the evening a repair crew restored the cable.

There is video footage of a truck approaching the crossroads and it is hoped the driver may be able to assist.

Information can be supplied via the Community News on enquiries@cnws1.com.au



**24 Burns Road,
Ourimbah 2258**
beside M1 Interchange

02 4362 2236
c.boes@hotmail.com
www.bigflower.com.au

The Biggest Nursery on the Central Coast - 10 Acres!
Open Tue to Fri 9am-4pm Sat/Sun 9am-4pm Closed Mondays



Your local certified AWTs septic agents
Website – www.absolootseptic.com.au

Phone 02 4362 1060



** Free Quotes **

**40t All Terrain, Franna
3t Mini Crawler, Crane Truck**

Now serving Mountain Districts & beyond

email: sales@crossroadscranes.com.au
Web.: Crossroadscranes.com.au

Call Alan 0456607501



- Sand • Soil • Gravel • Road Base
- Chicken Manure Supply and Shed Cleanouts • Bulk Deliveries
- B-Double Prime Mover • Truck and Dog
- Bogie Rigid-Tipper • Bogie Rigid-Tautliner • Semi-Tipper
- 45ft Flat-top, Stepdeck & Tautliner

Dallas J. Fabian
0417-285-047
dallas@djfhaulage.com



Services:

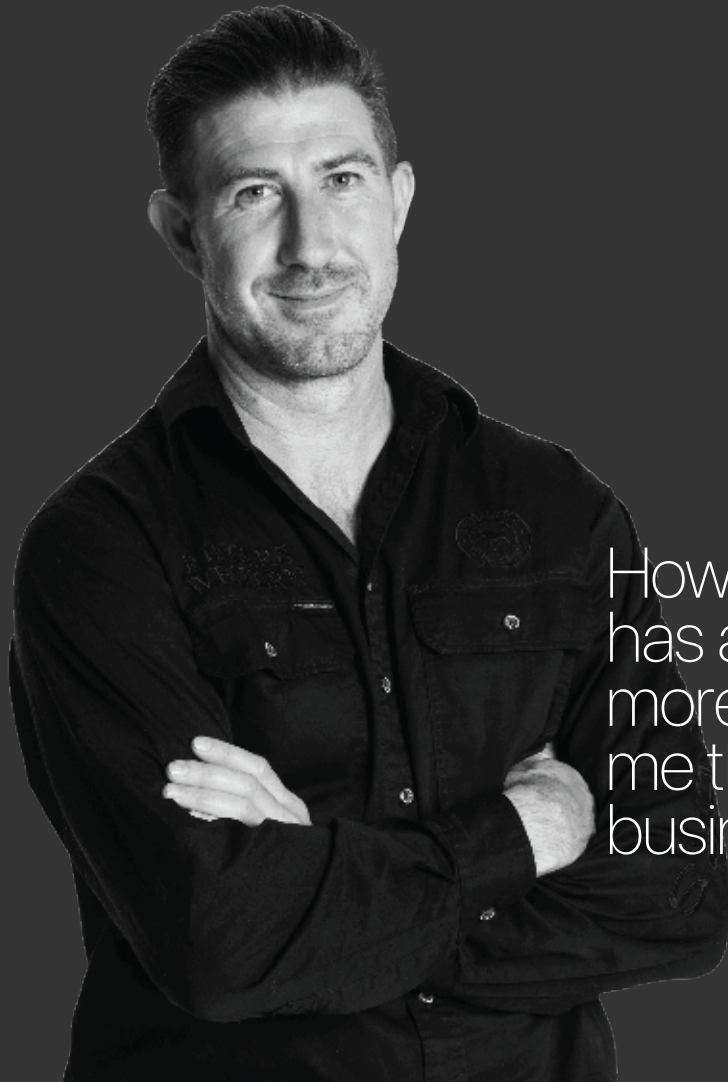
- Site Levelling
- Land Clearing
- Horse Arenas
- Roadways
- Certified Fill Material

Machines:

- Excavators / Augers
- Posi Track with Laser Level Grader
- Dozer
- Truck & Trailer Tippers

Michael Schembri
0419 236 788

Follow us  



How I do business has always been more important to me than, how much business I do.

Don't let your acreage linger on the market any longer. With Tyson's 24 years of expertise and his exclusive database of eager buyers, now is the time for a change. Reach out to Tyson today.

Tyson Nicholson 0418 251 312 tyson@thepropertymarket.com.au
thepropertymarket.com.au   

**The
Property
Market**

Blues on the Mountain Presents the Simon Kinny Lewis Band

Simon Kinny-Lewis, an Australian Blues Guitar phenomenon, boasts a remarkable career having performed and recorded with blues luminaries such as Robben Ford, Chris Cain, Josh Smith, Kirk Fletcher, and more. With eight albums under his belt and two more in the making, his musical journey reached new heights this year when he claimed the top spot on The Australian Blues and Roots Charts with four #1 albums.

His latest release, "King Biscuit" (2021), produced by the legendary Robben Ford and Grammy award-winning engineer Casey Wasner, is garnering international acclaim, firmly establishing Simon in the upper echelons of the blues scene. Recently, the Simon Kinny-Lewis band clinched victory at the Sydney Blues Challenge (band heat) and is set to represent Sydney at the International Blues

Challenge in Memphis in January 2024. The band, comprising Tony Boyd on drums, Aiden Glover on bass, and Sean Costello on harmonica, is a formidable ensemble.

To support their journey, fundraisers were organized, reflecting the community's enthusiasm for their participation in the international Blues challenge which features top shelf Blues artists from all around the world. And we are stoked to be supporting Simon and the band with a special

fundraiser concert at the historic Mangrove Mountain Hall on Saturday the 16th of December.

Joining Simon and the band on the night is Darren Jack (Jacko) bringing over 20 years of thrilling audiences in Australia and the U.S.A with his powerhouse rock blues and soul-electrifying compositions.

Look out for more news about other special guest musicians that will join Simon on the night!



OPEN 7 DAYS
40 YEARS LOCAL



General Dentistry | Emergency Care | Cosmetic Dentistry
Orthodontics & Invisalign | Dental Implants | Oral Surgery
Sleep Dentistry IV Sedation | Wisdom Teeth Removal
3D CT Scanning | CEREC same-day ceramic restorations

02 4323 1933 | www.vcdental.com.au
Suite 10, 36-40 Victoria Street, East Gosford NSW 2250

NEW PATIENTS

> Comprehensive checkup & clean
Includes up to 5 x-rays
No Gap (with health insurance) or \$290

OFFERS (all patients)

> Free orthodontic consultation
> Free dental implant consultation
> Free cosmetic makeover consultation
> Sport mouthguards: **No Gap** or \$99

FINANCE

> We bulk bill the Medicare CDBS
> Zip Pay & Zip Money payment plans
> We partner with SuperCare



From planning to completion and much more

from a professional and experienced company.



COMMERCIAL | RURAL | RESIDENTIAL

Phone: 02 4312 7613
info@completesheddevelopments.com.au
www.completesheddevelopments.com.au

PLANNING • EARTHWORKS • CONCRETE • SHED KITS • INSTALLATION



AGRICULTURE • COMMERCIAL • RURAL • INDUSTRIAL

Australia's Leading Water Solutions Network

- ◆ Water Treatment
- ◆ Irrigation Systems
- ◆ Mowers & Ride-Ons
- ◆ Fire Protection Systems
- ◆ Water Tanks
- ◆ Pump Systems
- ◆ Fertigation
- ◆ Pipes & Fittings
- ◆ Chainsaws & Generators
- ◆ Repairs

Ph 4373 1466
780 Peats Ridge Road, Peats Ridge

www.thinkwaterpeatsridge.com.au

For those unable to attend the live show, but would like to contribute to help the band get to Memphis, contributions to the crowdfunding campaign are welcomed at <https://www.gofundme.com/f/memphis-blues-fundraiser>.

Doors open at 6:00 pm with the music starting at 6:30 pm. Tickets can be purchased at <https://www.trybooking.com/events/landing/1136487>. As always Blues on the Mountain is a family-friendly event, with great food available for purchase on the night, BYO drinks welcome. Camping sites for caravans or campervans are also available for those that would like to stay the night.

Don't miss this opportunity to experience an unforgettable night of blues mastery and support these exceptional musicians on their journey to Memphis.

Links:

Facebook: <https://www.facebook.com/SKLBLUES.OFFICIAL>

Facebook event: <https://www.facebook.com/events/712717427420713>

Website: <https://www.skblues.com/>

YouTube: https://www.youtube.com/watch?v=TiSd_zzv_YU

Ryan Howard



MANGROVE PRODUCE AND HARDWARE

1668 Wisemans Ferry Rd, Central Mangrove *(just 1km from the Crossroads)*



CHRISTMAS IS JUST AROUND THE CORNER!

WE HAVE ALL KINDS OF GIFTS IN STORE. CHECK OUT OUR TRUE VALUE AND TUCKERS CATALOGUES IN YOUR LETTERBOX. ON SALE NOW!



- ◆ Horse Feed
- ◆ Fertiliser
- ◆ Paint
- ◆ Pet Food
- ◆ Timber
- ◆ Plumbing
- ◆ Bird Seed
- ◆ Hardware
- ◆ Fencing
- ◆ Vet Supplies
- ◆ Hand Tools
- ◆ Electric
- ◆ Chemicals
- ◆ Power Tools
- ◆ Fencing

Mon-Fri: 7:30am -5:00pm
Sat: 8:00am -2:00pm

Ph: 43731259

SHOP ONLINE AT
www.tuckersstore.com.au
or shop.truevalue.com.au

KULNURA AND DISTRICT GARDEN CLUB NOVEMBER

Thank you to Neil and Christine Genge of PineLea Nursery at Mangrove Mountain for inviting us to your nursery. Originally a property of pine trees, it now supports a wholesale nursery and various gardens of natives, roses, shady trees, vegetables and mixed flowers, and a wisteria walk. There is a lovely vista over the valley from a spot perfect for a family wedding.

The weather was kind, a perfect day for our meeting and we had a good attendance. Thank you everyone who came, and vice president Dave for chairing the meeting. Raffles were popular. We all appreciated the many donated plants.

As always we enjoyed the day, and went away very much inspired.

Flower competition winners were:

- Exotic: 1st - Judy Horton, Romneya coulteri, California tree poppy
- Native: 1st - Helen Morrison, White Flowering Gum
- Produce: 1st - Vivian Shaw,

Singing Group

It's a fun and relaxed time to sing along to your favourite tunes in a small group just for the joy of it.

There are a huge variety of songs from pretty much every decade and style of music; folk, pop, rock, country and show tunes. If we don't have what you'd like to sing we'll get it for next time.

Players of instruments and all type of music fans welcome.

Enthusiasm compulsory with talent entirely optional!

Meeting at Mangrove Mountain Hall 6pm on the 1st & 3rd Tues of the month. Why don't you come along to sing along!

Kim & Leila, 0401 516 501



Silberbeet

Our December meeting will be on Monday 11th at Somersby. Competition winners for the year will be announced. Please contact us for more details.

We welcome all new members to

Kulnura and Districts Garden Club. Please email kulnuradgc@gmail.com for information about meetings, membership, or any other questions, or feel free to call Jacqui on 0455 364 262 .

Patricia Smith





On The Go Constructions Pty Ltd
Specializing in the building of chicken sheds

Charlie Muscat is well known in the Industry, with over 12 years experience and has a reputation for quality workmanship.

- * New Chicken Sheds * Tunnel Conversions * Roofing
- * Machinery/Farm Sheds/Stables/Lofts/Piggeries * Coolrooms
- * All Fabricating services - All frames & trusses are fabricated by On The Go Constructions to Engineer specifications.

Call Charlie on 4374 1114 or 0408 684 719

VISION FOR LIFE...

For all your concrete & pumping services,
call Louis on 0418 409 576



COASTAL TRUCK LICENCES

LR to HC Licences

Paul Viola: 0481 409 309

ABN: 36 659 041 880

info@coastaltrucklicences.com.au

[Coastal Truck Licences](#)

Mountain Districts Christian Church Inc.

Now that the Trusteeship for the Mangrove Mountain Union Church is firmly back in local hands, the Worship Group that has been running services on the 2nd and 4th Sundays of each month will separate from the Trustee Association.

It has been determined that a key factor in the recent attempt to sell the Union Church was that the Managers of the Trust and the remaining Uniting Church Congregation were the same people.

When the Mangrove Mountain Uniting Church Congregation failed, those same people did not wish to

continue managing the Union Church property. The regrettable events that followed are now history and it is time for us all to move on.

The re-established and growing Worship Group will become known as the Mountain Districts Christian Church Inc. (MDCC Inc).

The MDCC Inc will be a hirer of the Union Church. It will not be responsible for the management of the Union Church and it will pay a hire fee on every occasion that it uses the property, just like other hirers. Although the MDCC Inc will have its own membership, management committee and constitution, our worship services are open to everyone.

So, a bit about the Mountain Districts Christian Church Inc

Our vision is to establish and grow a non-denominational Christian church

in the Mountain Districts that is committed to glorifying the Lord Jesus Christ, proclaiming his word as set out in the bible and giving witness to his salvation.

Our regular services will continue on the 2nd and 4th Sundays of every month. In 2024, we hope to increase the number of worship services and activities each month.

Coming up on the evening of Friday 8th December, the Meeting Hall will be the venue for a free film night – all welcome – see our advert elsewhere in this newsletter.

Please come and try us out, and maybe you will discover something special, something spiritual and something Christian in our growing Mountain Districts Christian Church.

*Robert Meggs for the
Mountain Districts Christian Church Inc.
(mob) 0429 443 310*



**Kulnura Computers
Supplies & Services**
4373 1237

- ❖ Custom Built Computer Systems for the Home - Office - Extreme Gaming
- ❖ Computer Repairs - Virus removal
- ❖ Upgrades
- ❖ Software - Accessories
- ❖ Electronic components

**MOUNTAIN
DEVELOPMENT SOLUTIONS**

**SCREW PILING- specialists
EARTH MOVING
RETAINING WALLS
RUAL ROAD WORK AND DRAINAGE**

**Ph 0417 479 525
JOHN WHITE**

The Grass Cutters

- Slashing
- Rock picking
- Farm cleaning and clearing
- Cultivation and more
- Obligation-free quotes



Call **0419 412 993**
Email pat@thegrasscuttersrus.com
See us in action at: thegrasscuttersrus.com



SIS SOLAR
The future looks bright

We're a local family business based in Wyong who specialise in providing and installing solar systems. We pride ourselves on offering only quality products at a cost-effective price. One of our key goals is to provide our customers with dedicated and honest customer service throughout their experience with our team and our reviews proudly back that up.

- Local Family Business
- Australian Owned And Operated
- Local Employees, Not Contractors
- Over 2500 Installs In Local Area
- \$0 Deposit Payment Plans Available
- Competitive Prices On The Coast

Contact: **Graham Friend**
0418 212 980
Regional Manager, Central Coast

PET FOOD Supreme Poultry
Call Now ..Ph. 02 4374 1700

Budget Mince	\$10.00 (10 kilos)
Carcass	\$9.00 (10 kilos)
Necks	\$20.00 (10 kilos)

All stock subject to availability - Min. purch. \$20
Product price subject to change without notification
2598 Wisemans Ferry Rd, Mangrove Mountain
MONDAY to FRIDAY .. BETWEEN 8am and 3pm

REGULAR ACTIVITIES & MEETINGS

RURAL FIRE SERVICES

Bucketty RFS	Weekend Training Station Maintenance General Meeting	3rd Sat, 9am-12 pm, breakfast 8.30am Every Thurs as required, generally 10am-1pm 3rd Sat in even months, at 1pm, All welcome bucketty@lowerhunnerfs.com.au 4998 8130
Calga-Mt. White RFS	General meeting Training Information & updates Contact	3rd Mon of the month, 7.30pm all welcome Every Monday 6.30 except public holidays Facebook.com/calga/mtwhiteruralfirebrigade/ Captain.calgamwhite@ccrfs.org.au - Zack Winslade.
Kulnura VBFB at Greta Rd Station	General meeting Training	1st Wednesday of the month, 7.30pm 3rd Wednesday of the month 7.00pm
Mangrove Mountain RFS Bloodtree Rd	General Meeting Training / Maintenance	Last Wednesday of the month, 7 pm, All Wednesday's except last of month, 7 pm
Spencer RFS	General Meeting Training Junior Training	2nd Monday of the month Meeting 6.30pm 3rd Monday Maintenance 6:30pm 4th Monday Training 6:30pm E: captain.spencer@ccrfs.org.au Alison Wade 0415 668953. 4778 Wisemans Ferry Rd
Somersby RFS	General Meeting Training/Maintenance	First Wed of the month 7.30pm at the Station Every Wed night 7.30 at the Station (except before Wed general meeting)
Yarramalong RFS		Information: www.facebook.com/ YarramalongRuralFireBrigade/ Phone contacts: 0406 360588 or 0418 280764 Email: volunteer@yarramalongrfs.org.au

COMMUNITY & SOCIAL

Central Coast Plateau Chamber of Commerce		First Tuesday each month 7.00PM MMMC
Coastlink Friendship Group		Wed 9.30am-2pm at the Health Centre, Nurses Rd, Central Mangrove
Country Women's Association (Somersby)		Second Wed of each month, at Somersby Hall Wiseman's Ferry Road, Somersby, contact Sue, 43721280 or 0407768000.
Country Women's Association (Peats Ridge & District)		First Monday of the month at Community Hall, Peats Ridge School. Any enquiries please contact Christine 0419 400163.
Country Women's Association (Mangrove Mountain Evening Branch)		2nd & 4th Tues of the month, 4-8pm at Mangrove Mtn Union Church, 2154 Wisemans Ferry Rd, MMtn. General meeting 6pm 2nd Tues. Ph Judy 43771728
Gosford North Inner Wheel club		2nd Wed each month 7pm at Phillip House in Kariong. Contact: Glenis Ph: 0400 486 760
Gosford World Vision Community Group		4th Tues 11am in Presbyterian Church, West Gosford Contact: Glenis Ph: 0400 586 760. https://permacultureecc.org.au/
Permaculture Central Coast Kulnura & District Garden Club		Second Monday, 9.30 for 10am start. Jacqui Maxwell 0455364262 kulnuradge@gmail.com
Ladies of the Valley Morning Tea		1st Tues, 10am to 12 at Angels Sussurri Cafe Yarramalong. Margaret Dale 0411104770
Mangrove Mountain Singers		1st & 3rd Tue, Mangrove Mtn Hall, 6-8pm Contact Kim & Leila 0401516501
Mangrove Mountain & Districts Community Group Meeting		1st Thurs of the Month, 7pm, Mangrove Mtn Hall. Contact: mepccinc@gmail.com, 0412669649
Mangrove Emergency Planning & Communications Committee		
Mangrove Mountain Country Fair Committee Meeting		3rd Thu of mth except Jan, 7pm, at The Hub of Mangrove Mtn. Pres- Shane 0417 436 529 www.mountaindistrictsassociation.com.au secretary@mountaindistrictsassociation.com.au
Mountain Districts Association (MDA)		Second Tuesday of the Month 6.30pm at the Mangrove Memorial Club President Robyn Downham 0414248224 Email info@rivercares.com.au
Mountain District Football Club Meeting		Friday 7.15am at Phillip House. 43404529
River Cares for the Lower Hawkesbury River District		President Brad Maisey, Community Meetings, 4377 1167, spencercpg2@gmail.com
Rotary Club Meeting		Last Fri of month. 12.00 noon Spencer Community Centre, Jennifer Dayes 4377 1364 Articles to: spencercpg2@gmail.com
Spencer Community Progress Group Inc		Tue 9.30am-12.30pm, Kulnura Tennis Courts. Enquiries: Alison Palmer 0427731548.
Spencer Community Ladies Social Club		Every 2nd month. Check website for further details. www.somersbyequestrianclub.org.au
Newsletter		Tues & Sat. 9am-5pm. Contact: Alan Hunt 4566 4626 or Adrian Acheson 0448 833 781
The Mountain Tuesday Social Tennis Group		
Somersby Equestrian Club Club & Committee Meeting		
Wisemans Ferry Community Men's Shed		
SPIRITUAL		
Anglican Service - Mountain Districts		Every Sun 8am at Peats Ridge Scout Hall, Sunday School during school terms
Mangrove Mountain Union Church Trust		General Meeting 3rd Monday, 7.30pm at the Mangrove Mountain Union Church Hall
Mangrove Mountain Christian Service		9.30am second and fourth Sundays. Mangrove Mountain Union Church, cnr Bloodtree Rd & Wisemans Ferry Rd

(cont'd next page)

LIVESTOCK MARKET REPORT



Maitland Liveweight Cattle Sale 20th November 2023

A total yarding of 270 cattle this week at Maitland with a good run of black restocker cattle.

All regular buyers in attendance with the trade job firm to 40c better in places and the export cattle remaining firm.

- Restocker Steers made 200c/kg to 325c/kg
- Restocker Heifers made 150c/kg to 268c/kg
- Yearling steers made 240c/kg to 305c/kg
- Yearling Heifers made 150c/kg to 240c/kg
- Grown Heifers made 175c/kg
- Cows made 120c/kg to 180c/kg
- Bulls made 140c/kg to 180c/kg

Maitland Store Cattle Sale Report 18th November 2023

A mixed yarding of 650 cattle yarded on Saturday at Maitland with some good pens of weaners on offer.

There was good local demand, along with buyers in attendance from Cassilis, Dubbo, Bathurst and the New England Area. Marker trend was dearer.

- Weaners Steers made \$300 to \$990
- Weaner Heifers made \$160 to \$1000
- Yearling Steers made \$600 to \$1000
- Cows and Calves made \$500 to \$1600
- PTIC Cows made \$600 to \$830
- Joined Heifers made \$500 to \$670
- Unjoined Heifers made \$870

Maitland Liveweight Sale Report 13th November 2023

A total of 291 cattle yarded this week at Maitland.

All regular buyers in attendance for the sale, with the trade market on a dearer trend and the export market remaining firm.

- Restocker steers made 190c/kg to 280c/kg
- Restocker heifers made 150c/kg to 235c/kg
- Yearling Steers made 180c/kg to 240c/kg
- Yearling Heifers made 140c/kg to 210c/kg
- Grown Steers made 180c/kg
- Grown Heifers made 146c/kg to 178c/kg
- Cows made 80c/kg to 170c/kg
- Bulls made 120c/kg to 162c/kg

Upcoming Sales

Dec 4th Maitland Liveweight Sale Commencing 9am

Dec 7th Gloucester Store Cattle Sale Commencing 11am

Dec 11th Maitland Liveweight Sale Commencing 9am

16th Maitland Store Cattle Sale Commencing 12pm

A friendly reminder that we are often in the area seeing clients and looking at their livestock and if you would like us to call in be sure to give us a call.

Like and share our Facebook page!

Keep up to date with bowelidbury.com.au

Michael Easy & Rodney McDonald
Bowe & Lidbury
52 Kyle Street, Rutherford NSW 2320
P: 02 4932 7066

REGULAR ACTIVITIES & MEETINGS (cont'd)

St Barnabas Christian Service
Yarramalong
Serbian Orthodox

Every Sunday, 9.30am. (Easter & Christmas Carols dates to be advised)
2nd & 4th Sun. of the month. 10 am, followed by luncheon, tea, coffee, cakes (cost \$20).
1184 Peats Ridge Rd, Peats Ridge

Kariong Community Baptist Church

Sun @9.30am, Church & Kid's Program, Philip House, Mt Penang Gardens, Chris Clarke email pastorkcbc@outlook.com

Divine Retreat Centre (Ph 04 6848 6782)
160 Hensons Road, Somersby
www.divineretreatcentre.org.au

Daily Holy Mass 8.00am to 8.30 am
1st Fri, 5.30pm-8.30pm Divine Mercy Friday
1st Sat, 5.30pm-9pm, Youth Ministry 18-35yr
Last Sun, 9am-4pm, One Day Retreat

Catholic Service -Spencer

Holy Trinity Church, 2nd Sat of the month 4pm, Contact 43771374 or 43771168 as times may change each month.

- Wollombi

2nd & 5th Sunday of the month, 4.30pm Mass at St Michael the Archangel, Wollombi.
Every Sat. evening vigil - 5.30pm St. Francis of Assisi Centre, 30 Lutana Rd, Somersby.
1st Sunday each month, 11.15am St. Barnabas
All welcome. Enq 0428 438577

- Somersby

- Yarramalong

YOUTH

Junior Girl Guides 5-10

Kooree Guide Cabin, 5.00pm - 6.30pm
Mondays in school term,

Girl Guides 10-15

Kooree Guide Cabin, 6.00pm-7.30pm
Mondays in school term, Contact 0417451764 for further information

Scouts, Cubs & Venturers
Peats Ridge Scout Hall

Cubs meet 6.30pm - 8.30pm Wednesdays
Scouts meet 7.00pm - 9.00pm Tuesdays
Venturers meet 7.00pm - 9.00pm Mondays
Contact 0460 696 941

HISTORICAL

Brisbane Waters Historical Society

25-27 Henry Kendall St., West Gosford, Ph: 4325 2270. www.henrykendallcottage.org.au

Dharug & Lower Hawkesbury
Historical Society Inc.

Last Sat of month. All welcome, contact Jan Kofron 0405321478 jankofron@optusnet.com.au

First Fleeters Central Coast Chapter

2nd Sat of the month, 10.00am for 10.30, Point Clare Hall (except Jan & Dec). Contact Margaret 0409467710 or Gavin 43404435.

The Pearl Beach Aboriginal History Group

3rd Fri of month 7.30pm Pearl Beach. Peggy 0411754577 pbaboriginalhistory@gmail.com

Wyong District Museum &
Historical Society

Open Sun to Thurs, 10am-2pm, other times by appt. Contact 43521886 email info@alisonhomestead.com.au website: www.alisonhomestead.com.au

ACTIVITY/HOBBY

Central Coast GNU/Linux Users Group
Coastal Communicators Toastmasters

www.cclug.org.au - all most welcome

Craft/scrapbooking

1st & 3rd Thurs of month, 6:45pm to 8:45pm at Doyalson-Wyee RSL. Debbie 0421216952

Saturday Craft Group/Spining
and bobbin lace

Yarramalong Hall 10am to 5pm, \$12/person. Bring along your projects. Dates & details: stackm@skymesh.com.au or ph 43561196

Yarn group (knit, crochet etc)

2nd Sat of the month Somersby Hall (10am to 2pm) cost \$5 per person Carmen 0434071305

Last Sunday of month 2pm at Angels Sussurri Cafe Yarramalong. Contact Margaret Dale 0411104770

HALL BOOKINGS

Kulnura Hall

Contact Central Coast Council.

Mangrove Mountain Hall

Hall bookings Ryan Howard 0405416289

Somersby Hall and Mountain Districts
Culture and Heritage Centre

Hall bookings: 0413 359 655
or AH 4373 1488

Yarramalong school of Arts / Hall

enquiries@yarramalonghall.org.au
<https://yarramalonghall.org.au>



Antennas - Digital
Hayward Video & Antenna Service
VAST Satellite Service
"Government approved installer"
Ray Hayward
mob: 0412 685 555
email: Ray.Hayward@gmail.com



ELLIS
ELECTRICAL SERVICES PTY LTD
0411 317 506
Commercial | Residential | Industrial
LIC# 227507C

.:KSR.:.

**NEW
GRAVEL
ROADBASE
\$42/T
DELIVERED**

0411 868 437

POSITIONS AVAILABLE

FARMHAND required, five days a week experience essential. Kulnura area, ph 0418880639

WESTY'S PLACE has an opportunity for a hard-working all-rounder who would like to work locally. Westy's focus is pumps and irrigation however we also do metal work and general farm engineering. To start this will be 3 days a week with an opportunity to increase this over time. Previous experience in pumps, general farm maintenance and/or welding would be beneficial.

If you are interested in the position please drop your resume into us at 1650 Wisemans Ferry Rd, Central Mangrove or email it to info@westysplace.com.au

FOR SALE

TOP QUALITY DENMAN RIVER ARENA SAND - as used at Scone and Tamworth Equestrian Centres. All sand, no clay. Call for load rate. Mark 0409 152 540

WATER LICENCE Kulnura Mangrove Mountain Ground water source 45 Megs, open to offers, call 0407761375

GALE'S CITRUS - Bagged Citrus trees in various sizes available ph. 4372 1408 or mobile 0421 196 631

BABY GOATS - great browsers. Dianne-0427 573 494 0427 573 494

MULCH for sale. 15m³ Minimum. Delivery if applicable. David 0418 233595

FREE RANGE EGGS, all natural, \$5/doz ph 0412 669649

CNS Electrical

Lic No. 214132C



Your local Electrical Contractors on the mountain, specialising in Rural, Domestic, Commercial and Industrial works, including: Excavation, Trenching, Mains & Sub-mains, Voltage Calculations & Future Planning.

Call Cameron for a quote on: 0438 695 600

Office: 0480 467 894

Email: admin@cnsselectrical.com.au

OUTLAND Mechanical & Maintenance Service

Licence No. MVRL54125 ABN 14814837840



Mobile Diesel Mechanic

- Specialising in Small Fleet Diesel Service
- Tractors • Farm Machinery • Mowers
- Earthmoving Machinery
- Welding

John: 0427 660 752 jlhellyer67@gmail.com

Your LOCAL GUY for:

**STARLINK INSTALLATION
CCTV, WiFi,
& MORE**

STARLINK IS HERE

A free tip from me... STARLINK is Awesome but... BEFORE ordering STARLINK, download their APP to your phone, read the instructions and do the visibility test. If you pass the test, give me a call about installation etc.



Master Security License: 101264
Open Cablers License: 55883
Insured PI & PL.
Over 30 years In business.
Techniport Pty Ltd T/A
CLOUD SECURITY
Call WARREN 0407 366 444



Bikes n Motors

**Motor Vehicle Repairer
Service & Repairs**

**Motorcycles ★ Light Vehicles
Cars ★ ATVs ★ Buggies ★ Quads**

Call & Book Now

PH: 0491 622 080

1154 George Downes Drive,
Kulnura, NSW, 2250.
★ Behind Jerrys' Cafe ★
bnm@bikesnmotors.com.au
www.bikesnmotors.com.au

**PINK & BLUE
SLIPS**
Licence No:
MVRL56584

CLASSIFIED ADVERTISEMENTS

These columns will be set aside each issue for residents to advertise inexpensively and effectively in their own local paper. If you have anything you wish to sell, buy, swap, etc., ring 4374 1039 or 0412 669 649 during office hours. Rates start at \$4.00.

WANTED

OLD BATTERIES, will pickup, phone 0413 975 107

MALE COMPANION 18 to 80 for twice weekly meeting. 0431087281

ACCOMODATION WANTED

SIMPLE ACCOMODATION and / or work please ph 0438 434 154

AGISTMENT

HORSE AGISTMENT AVAILABLE. Full care. Group and individual paddocks with shelters. Full size sand dressage arena, grass jumping arena. Located walking distance to Peats Ridge Village and Café. Call Cameron on 0438695600.

SERVICES AVAILABLE

ALL TERRAIN SLASHING

Track mounted slasher/mulcher and excavator mounted flail mower. Sloping land, fire breaks, hazard reduction of low vegetation, (lantana, etc) fence line clearing, broad acre slashing. Free quotes. Bliss Earthworx 0409456003

KELLY'S KLEANING SERVICES - Servicing the Mountain & the coast. Please call Kelly on 0420541196

SERVICES AVAILABLE

HANDYMAN (with own tools) looking for work in the greater Mangrove Mountain/Somersby/Gosford area. Also have Forklift licence. Phone 0414 912 423

SMALL ACRE MOWING Excavation, Environmental Remediation 0412 228 718

AIRCONDITIONING, BUILDING, CARPENTRY - Local service, 14yrs experience in aircon, 22yrs experience in building & carpentry. Call Ken 0412 842 920

Laurie Douglass Plumbing
Plumber, Drainer, Gasfitter, Roofer - Ph 4373 1257 Mob 0407 008 488

QHHT Level 2 Practitioner and Soul Speak Practitioner. Also offering:

- group regressions (in person or online)
 - "surrogate" sessions (in person)
 - pendulum dowsing classes (group or individual, in person or online)
 - spiritual/life coaching
- For bookings or enquiries call Sharyn on 0408 967 507 or email shazzaunitt@protonmail.com

PEATS RIDGE HAIR CUTS MEN - LADIES - CHILDREN

Wed, Thu, Fri 9am-2pm. Sat 8am-12noon
Walk in - no appt necessary Ph 0447436558

OOST Painting Contractors - Lic 71725C
Quality & cleanliness assured.
For a free quote call David 4356 1449 or
0417 234 094. Yarramalong Local

PEST CONTROL - Servicing the local area. A.T.S. Pest Control Services Phone Tony 4373 1157 Mob: 0427 731 157

MISTY MOUNTAIN RURAL
CONTRACTORS - Earthworks, Irrigation,
all services available Ph 43530990 or
0418221495

ANTENNAS - DIGITAL - Specialists with
VAST Satellite Service, extra outlets, boosters.
Mobile service 0412685555

BRICKLAYING & Render repairs. Adrian
0408347737. Lic 98665C

HORSE RUG REPAIRS - reliable prompt
service. Pick-up & drop-off available for large
quantities. Ph 0405 620 394

HORSE BURIALS

Specialising in the on-site burial of your
precious horse. Ph Craig 0411 2888 12

ALL COVERS & CANVAS WORK!

Boats, Vehicles & Horse floats re-trimmed,
cover & horse rug repairs, no job too small!
Servicing the mountains & the valleys. Call Alan
on 0414 993 669 or Louise on 0410 646 200.
located at Yarramalong Road Wyong Creek.

TOWN 'N COUNTRY FLOOR SANDING & POLISHING

New & old floor boards, parquetry, verandahs,
stairs, walls ceilings, re-coating, staining &
painting etc. free quote ph Stuart 0400076261

WATER BORES

Local drilling company
based at Ourimbah

Contact: Paul Slade
Ph/Txt: 0408 471247

email:
Sladedrill@bigpond.com



Mountain Medicine

Providing the local community with a collaborative
approach to multidisciplinary healthcare.

Dr Christine Wade

B.Med (Hons) FRACGP

Dr Arsenios Magdas

MD B.MedSc

Pathology - Douglass Hanly Moir

Mon & Fri 8.30am to 1.30pm
Wednesday 12.00pm to 5:00pm
Ph: 43741942

Torin O' Grady

Podiatry (Foot Care)



40 Niclins Rd, Mangrove Mountain NSW 2250
ph 4374 1252

All Allied Health Professionals are EPC accredited. Medicare rebates are
available if you have a GP Management Plan with Team Care arrangements
Please enquire for more details.

Contractors Licence No: 367849C

WATERMAN EXCAVATIONS PH: 0438 617 851

Mulching Horse Arenas Certified Fill

Admin@Watermanexcavations.com.au
www.watermanexcavations.com.au

- Excavators - Tipplers - Grader - Dozer - PoziTrack - 6X6 Dump Truck

CROSSROADS AUTOMOTIVES

Terry Kyriacou

Mon - Fri: 7:30am - 5:00pm

Saturday: 7:30am - 12:00pm

SPARE PARTS

LOG BOOK SERVICES

MECHANICAL REPAIRS

Ph: 4373 1774



Cnr of Wisemans Ferry Rd. & George Downes Drive, Central Mangrove

AUTHORISED INSPECTION STATION (INCL LPG)

MLS MOUNTAIN LANDSCAPE SUPPLIES

SANDS SOILS MULCHES WOOD-CHIPS GRAVELS PEBBLES
PLANT NURSERY - GIFTS - FIREWOOD

DELIVERY AVAILABLE 6 DAYS A WEEK

PH: 4376 1055

988 George Downes Drive Kulnura
mls@live.com.au



• AGRICULTURE • INDUSTRIAL • DOMESTIC

Licence No - 269888C

24 HOUR EMERGENCY CALLOUT SERVICE

Ph: 4322 3333

Fax: 43223433

Email: sales@girrigation.com.au

Web: www.girrigation.com.au

Unit 2 254 Manns Road, West Gosford NSW 2250



K&T PROPERTY CONSULTANTS PTY LTD

Real Estate Valuers & Land Economists

ROBERT MEGGS FAPI CPV

providing independent property valuation advice, including:-

- Stamp Duty, CGT, GST & Retrospective Valuations
- Probate & Estate Valuations • Insurance Valuations
- Valuations for Family Law • Pre-Sale/Auction Advice
- Land Value & Compulsory Acquisition Valuations

500 Kyola Road
KULNURA NSW 2250

Email: ktpropty@ozemail.com.au

Telephone (02) 4376 1451

Facsimilie (02) 4376 1452

Mobile 0429 44 33 10

Misty Mountain Rural Property Development Services



- agricultural consultants
- pasture improvement
- fertilizer spreading
- weed spraying
- all tractor work 4/2WD
- soil conditioning
- irrigation install/design
- fencing & stables
- crop planning & planting & all excavations
- concrete slabs Lic. R94321
- property evaluation & planning & management
- fork lift hire

Ex-Dept. Agriculture Officer with 45 years
experience in the local district.

Greg Koutoulas is the man to call on 0418 221 495



Stop Water Shop

Authorised Dealer

**ONGA, DAVEY and
GRUNDFOS PUMPS**



K. W. & M. E. WEST Pty. Ltd.

1650 Wisemans Ferry Road,
Central Mangrove

Phone 4373 1164 Fax 4373 1049

PUMP REPAIRS AND SERVICE

Trading Hours

Mon - Fri

7.30 am - 5 pm

Sat 7.30 am - 12 noon

Closed Public Holidays