

COMMUNITY NEWS

No. 910 Ph: 4374 1039 Mo: 0412 669 649 Email: enquiries@cnews1.com.au Web: cnews1.com.au 4th November 2022

Mangrove Mountain Union Church Update

29/10/2022

Still waiting, waiting, waiting for communication from the Liquidator's solicitor. Resolution could be so simple. It is agreed between the parties that the Liquidator of the MMUC Inc can exercise the former Trustee's powers and appoint a new Trustee for the Union Church.

The authority to do this is in the 1914 Trust Deed. There is no requirement in the 1914 Trust Deed, or in the NSW Trustee legislation, that the appointment of a new Trustee must be done through the Supreme Court. It is a straightforward administrative process. There is even a government form for it! Just need to complete the form and register it with the NSW Land Registry Services.

Yes, we accept there are costs involved and we have asked what they are. Should be a bit more reasonable now we know there is no need to go to Court. But still, we wait!

In the meantime, we have approached the Liquidator to allow us access to the Union Church for a Christmas Day Service. We have offered to meet any extra insurance payment that is required (the Liquidator has denied prior requests claiming that this is the obstacle to allowing public use).

A Christmas service will be held at Mangrove Mountain this year – please hope and pray with us that it will be in the Union Church.

Thank you to all who supported our running of the Country Fair Plant and Flower Stall this year – thanks to the local plant nurseries and flower growers for their very generous donations – thanks to the 20+ volunteers who assisted with setting-up, 3 shifts of plant sales and packing down – thanks to all our customers who bought almost everything in the stall.

Plant Stall Coordinator, Ryan Howard did a fabulous job of bringing it all together for an absolute bumper result, three cheers to Ryan!

Our worship services continue in the Mangrove Mountain Public Hall



November meeting

Kariong Eco Garden
caring for the earth

Presenter
Lisa Wriley








When

7.30 pm start
Friday, 11th November 2022

Where

Phillip House
21 Old Mt Penang Road
Kariong

Cost

\$3 Members & Visitors (with lucky door prizes)

Enquiries

EJ Kydd, 4362 3065
or see our website
austplants.com.au/Central-Coast-Events

APS-CC and Phillip House follow standard COVID safe practices

on the 2nd and 4th Sundays of the month. Bible Study is on the 1st, 3rd and 5th Mondays.

Kim de Bruis is leading a restart of the Singing Group from Monday 7th November at 2pm in the Mangrove Mountain Public Hall. All are welcome to every event. Please contact me for further details.

Finally, thank you to all those from within our community, and also those from further afield, who continue to support our campaign to have the Mangrove Mountain Union Church reopened for Christian worship services and use by our community groups.

Robert Meggs for the Mangrove Mountain Christian Group Inc. (mob)
0429 443 310

“We do not have to be mental health professionals to identify the traits of the possible sociopaths among us.”

P.A. Speers

STOP !

Next issue Published
18th November 2022

**** DEADLINE ****

**** 11th November '22 ****

Send adverts & copy by
email, website or post.
Email, website, FB or
phone for enquiries

Have Your Say On Running Our Local National Parks

The National Parks and Wildlife Service (NPWS) has drafted a plan of management for local national parks and reserves on the Central Coast that is now open for public exhibition and submissions.

The draft plan includes the following parks and reserves:

- Ku-ring-gai Chase National Park
- Lion Island Nature Reserve
- Long Island Nature Reserve
- Spectacle Island Nature Reserve

Member for Gosford, Liesl Tesch, invites locals to make their voices heard in future planning for these areas as visitor numbers swell and putting pressure on the significant natural and cultural heritage values.

“The Central Coast is home to some of the most spectacular natural and cultural sites within all of NSW. Ku-ring-gai Chase National Park now attracts up to four million visitors each year who come experience some of the best that our incredible natural environment has to offer.

“I have spent plenty of time in these areas and understand that we must

COMMUNITY EMERGENCY COMMUNICATION RADIO PILOT ROLLOUT TO COMMENCE

There has been a growing interest in the community emergency communications project and many community members have signed up to participate.

Project team members have been busy meeting with their local communities to explain the project and gather feedback. We had a stall at the Country Fair and the radios came in handy to manage parking and for communication between Fair organisers.

Using computer based modelling to determine radio connectivity and signal strengths, twenty properties have been selected to kick off the pilot implementation.

The CB radios selected are GME

TX4500S 5w units which will be set up as base stations with a 1.85metre 6dBi outdoor antenna and a 240v AC to 12v DC power supply.

Marine deep cycle batteries are incorporated in the power system and will provide a 7 day power source in the event that mains power is lost.

GME TX6160 5w hand held units are also to be deployed at selected locations.

The installations are to be carried out by Karera Pty Ltd, a business based on the Central Coast. Karera are a certified radio services provider and installer and are used by various Government bodies to do comprehensive communication fit outs including systems in emergency

effectively plan so that we can support locals, visitors, and nature alike.

“Central Coast residents are incredibly blessed to be surrounded by all this natural beauty, and the NPWS’ draft plan will hopefully help in allowing many future generations to continue to enjoy these protected sites.”

Key issues addressed in the draft plan include the management of threatened species and ecosystems,

engaging with Traditional Owner representatives, committing to future precinct planning to improve visitor experiences, and upgrading existing trails and tracks in context of growing visitor numbers.

The public are invited to make written submissions now. The draft plan of management is available at: www.environment.nsw.gov.au/get-involved/have-your-say.

Liesl Tesch MP
Member for Gosford



Mountain Medicine

Providing the local community with a collaborative approach to multidisciplinary healthcare.

Dr Christine Wade

B.Med (Hons) FRACGP

Pathology – Douglass Hanly Moir

Wednesday, opening hours 12.00pm – 5:00pm
Ph: 43741942

Torin O' Grady

Podiatry (Foot Care)

**Now Taking Appointments
call 43741252 - non-patients accepted**

40 Niclins Rd, Mangrove Mountain NSW 2250

All Allied Health Professionals are EPC accredited. Medicare rebates are available if you have a GP Management Plan with Team Care arrangements. Please enquire for more details.

MANGROVE MOUNTAIN PHARMACY



Monday – Friday: 9am-7pm

Saturday: 9am-3pm Sunday: Closed

Free Flu Vaccine

Now Available

No Bookings Required

- Free webster packing and all your pharmacy needs
- Household goods and gifts
- Milk, cold drinks
- Parcel point outlet

3/1 Waratah Road, Mangrove Mountain, NSW 2250

Phone: (02) 4374 1457 Fax: (02) 4374 1479

Email: mangrovetmparmacy@gmail.com

response vehicles.

The project team is in the process of developing user guide documentation, including safe use practices and communication protocols.

The pilot implementation aims to establish a line of communication between Bucketty and Spencer and will test the functioning of the system in some of the most radio unfriendly terrain we expect to encounter.

The aim of the radio system is to provide backup communications during emergencies such as bushfires, floods and storms, when power is interrupted, roads blocked and access limited. This will help communications between residents and emergency services and ensure that residents needs are addressed and emergency services can better target their efforts. and get warnings through to residents.

If you would like more information or would like to be involved please email your details to mepccinc@gmail.com

Keith Aranja
Secretary, MEPC

This project is an initiative of the Mangrove Emergency Planning and Communications Committee and is supported by the Australian Government.



An Australian Government Initiative

Mangrove Mountain Computer Club

6 Waratah Rd, Mangrove Mountain (The Old Fire Shed)

The club is community based and is open to locals and those from afar

Our aim is to enjoy using computers (not to be afraid of them)

If you have a computer based skill and would like to share it with others please contact
Sue Grist: Mobile 0408 895330

Short list of programs covered over the years:

- Photoshop
- Power Point
- Word
- Excel
- Publisher
- Computer Craft
- Calendars
- Movie Editing
- Slide Shows

Through the club you can gain access to a 3D printer



Our classes are mostly group learning with input from all those in attendance. Our aim is for social and friendly learning.

Classes:

Monday: A.M. Beginners
Wednesday: A.M. Intermediate
Wednesday: P.M. Computer based crafts.
Thursday: Q & A.

Contact: Sue Grist 0408 895330
<https://www.mmcc.ctcmm.net>

JOHN DRAPER & SON ELECTRICAL CONTRACTORS

Licence No. 65229C

Commercial, Industrial,
Domestic, Rural Installation

*Serving the Mountain and Districts
for over 50 years*

For prompt service and quotes

Peter: 43761141, Mobile 0428 732 623

John: 4376 1346, Mobile 0427 106 859

Victor Fenech Acupuncturist



0408 244 501

www.victorfenechacupuncturist.com.au



CENTRAL COAST
TERMITE REPAIRS

Licence 39912

Complete Building Repairs

- general carpentry
- structural rectifications
- excavation

call 0418 112 630

Kulnura Computers Supplies & Services

4373 1237

- ❖ Custom Built Computer Systems
- ❖ for the Home - Office - Extreme Gaming
- ❖ Computer Repairs - Virus removal
- ❖ Upgrades
- ❖ Software - Accessories
- ❖ Electronic components

Punk Rock experience at Wollombi

The Wollombi Burlesque Troupe have a new show. "Bur-Roque" is an extremely UNIQUE PUNK ROCK experience!

It is a Punk Rock Restoration Burlesque Show at The Wollombi Hall November 5 with LIVE BAND, The Cunning Stunts!

This event is ALSO a Punk Rock Masquerade DRESS UP party! Doors open at 6pm, show starts at 7pm. Rock on til 11pm.

DJ SOAP is playing pre-show (One hour), at interval (half hour) & after the show (One hour)!

Our PUNK hairdresser Anneka is available for last minute PUNK DOs.

Also- we have local photographer Chris Reid capturing your PUNK ROCK fabulousness...

"Bur-Roque" is mostly general admission, except lucky VIP guests are guaranteed front row seats & a glass of bubbles.

FYI- The Wollombi Hall is accessible but the loos there are not. FYI- This event is BYO.

The 2nd Earl Of Rochester can guarantee every single person that comes will have a night to remember.

Remember remember the 5th of November... Tickets & teaser at burroque.com

Sophie Cook



UPCOMING CATTLE AUCTIONS

Maitland Regional Saleyards

- Weekly Monday Liveweight Cattle Sales 9am, followed by Calves, Pigs & Sheep from 12 noon.
- Monthly Store Cattle Sale Saturday Nov 19th from 12 noon.

Gloucester Saleyards

- Fortnightly Thursday Store Cattle Sales 11am Nov 10th, Nov 24th.

Feedlots - Abattoirs - Paddock to Paddock Sales
Clearing Sales - Rural Property Sales

Follow us on Facebook or join our e-list on
www.bowelidbury.com.au



Bowe & Lidbury Pty Ltd
(02) 49 327 066

PET FOOD *Supreme Poultry*

Call Now ..Ph. 02 4374 1700

Budget Mince	\$7.50 (10 kilos)
Carcass	\$7.50 (10 kilos)
Necks	\$20.00 (10 kilos)

All stock is Subject to Availability

Product price subject to change without notification

2598 Wisemans Ferry Rd, Mangrove Mountain
MONDAY to FRIDAY .. BETWEEN 8am and 3pm

Mangrove Mountain Plumbing

General Plumbing, Renovations, New Homes, Pipe & Cable Locator, Gasfitting, Drainage, Blocked drains, Jet blaster, CCTV

SECOND GENERATION PLUMBER WITH
OVER 28 YEARS EXPERIENCE

Steven Zouroudis Ph: 0422302159

Lic-183316C

CENTRAL COAST PET OWNERS INVITED TO JOIN FREE MICROCHIPPING DAY

Central Coast Council, in partnership with its contractor Socares Central Coast, is making it easier for you to microchip your pet by hosting a free microchipping day at the Erina and Charmhaven Socares Animal Care Facilities on Saturday 12 November.

Local community members are encouraged to come along and have their pets microchipped, registered and relevant registration details updated on the day free of charge. Those in attendance can also access pet ownership advice, educational material and pet care products.

Microchipping and registrations are an important legal requirement when owning a pet and helps to ensure companion animals can be reunited with their owners, should they become lost. It also assists our Animal Care Facilities to locate owners of animals and rehome lost pets.

The Dharug and Lower Hawkesbury Historical Society Invitation to our CHRISTMAS LUNCH

The Dharug and Lower Hawkesbury Historical Society would like to extend the invitation to the general public to join us on Saturday, 26th November 2022 at the Wombat Café at 6135 Wisemans Ferry Road in Gunderman for a delicious 2 course Christmas Lunch.

Please arrive at 12.00pm to be seated by 12.30pm.

There will be raffles on the day with some great prizes to be won.

Bookings essential: enquiries@dlhhs.org.au or by phone on 0405 321 478 (please leave a message) by Wednesday, 16th November 2022.

Cost: \$35 per head. Coffee and tea are not included.

There will be a cash bar available.

All welcome.

*Robyn Downham, Publicity Officer
Dharug and Lower Hawkesbury Historical Society*

This is all part of Central Coast's Council's aim to increase the number of microchipped, registered and desexed dogs and cats across the region.

Event details:

- Socares Central Coast Animal Facility, Erina
Pateman Rd, Erina 2250
Saturday 12 November, 9am to 3pm
- Socares Central Coast Animal

Facility, Charmhaven
2 Depot Rd, Charmhaven 2263
Saturday 12 November, 9am to 3pm
No registrations required, walk-ins accepted on the day.

For more information and to get in touch search 'pet microchipping day' at centralcoast.nsw.gov.au

*Central Coast Council
Media Release*

TKG

Welding & Fabrication

- ✦ Mobile welding ✦ Fully equipped service truck
- ✦ Heavy machinery repair & modifications
 - ✦ Air arc gouging ✦ Hard facing
 - ✦ Steel horse & cattle yards
- ✦ Sheet metal work, gates and railings

Tim Green 0427 462 717

timdgreen1971@gmail.com

www.tkgweldingandfabrication.com

CROSSROADS CRANES

Free Quotes

**40t All Terrain Crane
20t Franna, Truck hire**

Now serving Mountain Districts & beyond

email: sales@crossroadscranes.com.au

Web.: Crossroadscranes.com.au

Call Alan 0456607501

Absoloot Septic

Your local certified AWTs septic agents
Website – www.absolootseptic.com.au

Phone 02 4362 1060

Soul Speak Healing



Your emotions are the window to your soul.

Soul Speak Practitioner

&

QHHT Practitioner Level 1
(intern)

Sharyn Unitt

Email: shazzaunitt@protonmail.com

Phone: 02 4376 1014, after 2pm

Mobile (for sms only): 0408 967 507

A Road to the Past

As I take up my pen in this year of grace 20....., I hear a woman cry "Oh, Bert! Oh, my neck!" "My neck is broken - pick me up!"

In the early afternoon of the 23 April 1927, Ron Green left his mother's place, Green mount, at Greengrove Lower Mangrove as a passenger in the back seat of a car, heading up Greens Deviation, bound for Gosford. The colour of the car is not recorded.

The conveyance was an Italian OM (Officine Meccaniche) 20 h.p.,

driven and recently acquired by William Casey, a tobacco worker from Mosman. Also on board was Esther Neal, mother of two and estranged wife of Ernest Charles Neal an engine driver from Stanmore. William and Esther had been staying for five days at Mrs. Green's.

They stopped briefly at Mangrove Mountain Hall where preparations would have been in full swing for the official opening celebrations to take place that evening. Cliff and Edgar Thompson would have been erecting the external lighting.

They are next heard of, a crashing

sound, by Norman Pinkstone who ran to the scene then rang the police. Fred Allen returning home from Gosford on his motor cycle, witnessed the car overturning. Fortunately for Ronald Gilbert Green, he had been thrown out before it overturned. William Casey regained consciousness in hospital with no memory of what happened.

Esther died at the scene. Not the only person destined for such a fate on that corner, an almost 90 degree bend near the old "ten mile" on the Mangrove Road. Now better known as the Dog Trap Road corner on Wisemans Ferry Road, Somersby.

The car hit a small depression in the road, and due to loose soil and gravel, overturned down the incline, somersaulted, and finally landed upside-down. Perhaps the fact "that the week prior had been one of record storms and damage, in which the roads had suffered severely" was a contributing factor. At the opening of the hall, "Mr. and Mrs. Maroney, who were prime movers in the fixture, were depressed during the week at the continued inclemency of the weather."

Inevitably the accident would have been the subject of much talk at the opening celebration. Shire President Cr. Taylor, who officially opened the Hall, would have driven past the site on his way to Mangrove, perhaps the wrecked OM was still on the roadside. Norman Pinkstone attended both



1926 OM

Your LOCAL GUY for:

- Fixed 4G Internet
- CCTV,
- WiFi,
- & more.




STARLINK IS HERE
WE ARE NOW INSTALLING
STARLINK INTERNET, AND
VAST TV SATELLITE
SYSTEMS.

CALL ME TO DISCUSS



Master Security License:
101264
Open Cablers License:
55883
Insured PI & PL.
Over 30 years In business.
Techniport Pty Ltd T/A
CLOUD SECURITY
Call WARREN 0407 366 444

WARD Septics

Septic Tank Cleaning

- * New Vaccum Truck that can pump 110 metres away from tank.
- * Plumbers Jetter attached for clearing blockages in sewer pipes.
- * Truck carries water to run Jetter
- * Water Tank Cleaning

*** And Even Cheaper Rates For You With A Neighbour**

Call Paul For More Info

0438 315 514

 **SepticCleaning.com.au**

the accident and the Hall opening, and both Fred Pinkstone and Arthur Lillicrapp, local representatives to Council were there.

Council works, or not, in mysterious ways. In May 1927, no doubt prompted by the fatality, Bert Craft was tasked with some road works “and came in for great praise as motorists flew around the newly banked turn at the ten mile peg” on their way to a horse race, The Mangrove Mountain Mile, a month later.

Hastening more slowly, and wisely, young Ron Green, eventually made it to Gosford and, in the fullness of time, remained there for the rest of his life. Had he been getting a ride to Gosford in the OM to visit Margaret Fletcher?

Margaret was the eldest daughter of George Fletcher, celebrated contributor to the Gosford Times as “Perong”. George, too, was at the opening of the Mangrove Mountain Hall, on that fateful day when a young mother lost her life.

Ron and Margaret were engaged in 1937 and married in 1940. Ron’s sister, Nora Comensoli, was bridesmaid (married to Luigi Comensoli, Ric. Comensoli’s uncle), so – some happy endings.

But before I lay down my pen in the year of graceetcetera....., I wonder, if those people could revisit us and drive that road again, would anything be recognisable?

The Hall is still there, and the

Church (almost).

Roads are still not fit for current purpose, and council only seems prompted to take action by loss of life. (Even so, poorly planned changes in 2014 to the fatality-prone crossroads at Central Mangrove are still not completed).

Also it would feel a very different community to have no elected representatives in local government to advocate for local interests. (They were a major presence at the opening of the Hall in 1927)

And – people still drive at “break neck” speed around that corner.

Neil Berecny Brown



“The Bend”



Just last week

Dr. S. ANANDASIVAM

(ANAND)

MBBS, FRACGP, AMCC

For Doctor Appointments:
Monday - Friday 9am- 5pm

*Laverty Pathology Service
Available:*

*Monday to Friday 8:00 till 3:30
Saturday 8:30 till 12*

Medicare Bulk Billing

**1639 Nurses Road
Central Mangrove, 2250**

02 4373 1914



MANDATORY
LAWNS AND GARDEN SERVICES

ANDRE NESHANIAN
0478417229
mandatorylawns@hotmail.com

- All landscaping needs
- Roads & driveways
- Clearing, garden beds, water drainage
- Overall gardening needs/maintenance

- * Post & Rail
- * Fence
- Painting
- * Repairs
- * Bobcat Hire

Ricks Rural Fencing

*Servicing the Mountain
for over 30 Years*

Phone Rick 43731155

- * Chain Wire
- * Wire Stock
- * All types of rural fencing



Council Grants Programs to Support Local Community

At the 27 September ordinary council meeting, Council approved the recommendation to allocate \$279,172.82 for the Community Events and Place Activation Grant Program and \$289,860.51 for the Community Development Grant Program. A total of 46 applications were successful across the two programs.

The Community Events and Place Activation Grant Program supports the community to deliver events and activities that activate spaces and places around town centres, foreshores, lakes and open spaces for families and the wider community, including visitors to the region.

The Community Development Grant Program supports community organisations to implement activities that provide community outcomes and enhance the quality of life of residents of the Central Coast as well as strengthening their ability to deliver projects and services that respond to the needs of the community.

Together the programs have a total budget of \$600,000 and are funded through existing and approved 22/23 Operational Plan budgets.

Council Administrator, Rik Hart said funding is important to reconnect our community and support our local organisations.

"I'm pleased this funding will support organisations to deliver a range of exciting, meaningful programs and activities that engage our local community and encourage visitation to our region".

23 Community Events and Place Activation applications that have been endorsed for funding under the program:

1. The Rotary Club of Gosford North Incorporated
2. Davistown Putt Putt Regatta and Wooden Boat Festival Incorporated
3. Symphony Central Coast Incorporated
4. Wyong Shire Garden Competition Committee Incorporated
5. Gosford Race Club Limited
6. Green Point-Terrigal Community Services Incorporated
7. Surfing NSW Incorporated
8. Central Coast Conservatorium of

- Music Incorporated
9. Heritage Ventures
10. Words on the Waves
11. Eastcoast Beverages
12. 5 Lands Walk Incorporated
13. Terrigal Trotters Incorporated
14. SingleTrack Events Pty Ltd
15. Naughty Noodle Fun Haus Incorporated
16. Tangerine Events
17. Sport Central Coast
18. Rotary Club of Kincumber
19. Gosford Sister City Association Incorporated
20. The Bays Community Group Incorporated
21. Permaculture Central Coast (PCC) Incorporated
22. National Water Ski Racing Association-Region V Australia
23. Business NSW

23 Community Development Grant applications have been endorsed for funding under the program:

1. Kincumber and District Neighbourhood Centre Incorporated
2. Volunteering Central Coast Incorporated
3. Camp Breakaway Incorporated
4. Community Environment Network Incorporated
5. Volunteer Marine Rescue NSW-Central Coast
6. Coast & Country Primary Care Limited
7. We Care Connect Limited
8. Lions Club of Northlakes Central Coast Incorporated
9. 5 Lands Artist Collective Incorporated
10. Killcare Surf Life Saving Club Incorporated
11. Gorokan Probus Club Incorporated
12. Berkeley Vale Rugby League and Sports Club
13. The Fathers Table
14. Art at Work Incorporated
15. Road Safety Education Limited
16. Coast Community Broadcasters Incorporated
17. The Attic Theatrical
18. Central Coast Volunteer Rescue Squad Incorporated
19. SparkCC Incorporated
20. Diamond Women Limited
21. Toowoona Bay Surf Life Saving Club Incorporated
22. Five-O Plus Public Radio Association Incorporated
23. Surf Life Saving Central Coast Incorporated

More information is available in the Council meeting agenda documentation on Council's website.

Central Coast Council
Media Release

FESTIVAL FAVOURITES HEADLINE BLUES CHRISTMAS PARTY

Two of Australia's most popular Blues and Roots festival acts, 19-Twenty, and Genevieve Chadwick and the Stones Throw are set to return to Blues on the Mountain on Saturday the 3rd of December and will be headlining our biggest Blues and Roots Revival Christmas Party event ever!

On the back of another big year for the high energy band, who were voted as one of the best live acts amongst a star studded lineup at this year's Byron Bay Bluesfest, 19-Twenty are back for another huge blue Billy grass rocking Christmas Party show at Blues on the Mountain! Will drummer Syd be balancing pumpkins on stage again? Or maybe guitarist/frontman Kane will be showing off his guitar skills atop the speaker stack while Johnny G plays the huge double bass upside down! Perhaps brother Heath will join the party for a Rage Against the Machine cameo or a little saxophone playing mayhem! Or maybe all of the above and more! You never know with 19-Twenty, but one thing is guaranteed is their show will be the BEST fun you've had all year!

Genevieve Chadwick and the Stones Throw are another Blues and Roots festival favourite both nationally and internationally, and Genevieve Chadwick will be traveling all the way up from the South Coast just to play for us! Every once in a while an artist emerges who touches the very soul of an audience. Genevieve Chadwick is such an artist. Described as a female John Butler, "Australia's answer to Melissa Etheridge" and likened to the great Janis Joplin, Genevieve Chadwick and her band the Stones Throw are the real deal and not to be missed!

Toby Wells just continues to impress, our most requested local act returns to the Blues on the Mountain stage with his new single Ocean Blues and all your favourites too.

With 19-Twenty, plus Genevieve Chadwick and the Stones Throw and Toby Wells, the Blues and Roots Revival Christmas Party will be one of our best shows ever and offers the audience a rare opportunity to see some of Australia's premier touring acts at such a laid back family friendly venue. Blues and Roots Revival Christmas Party is an All ages, family friendly event, so gather your friends and family and book early for the Christmas Party event of the year! a fantastic afternoon/evening of music, great food, fun and frivolity with your friends and some of our all time favourite acts.

Blues & Roots Revival

Central Coast Hinterland NSW

Saturday 3rd December 2022

19-Twenty

Genevieve Chadwick

Toby Wells

& the Stones Throw

book now! www.trybooking.com/BZVDN

Food and light refreshments will be available for purchase with yummy hot food from the food van. BYO welcome.

Our Blues and Roots Revival Christmas Party will be held outdoor picnic style (BYO picnic rug or fold up chairs) at the picturesque Dooralong Hall and Recreation Reserve with heaps of room and a playground for the kids weather permitting. In the event of wet weather, the event will move indoors to the historic Mangrove Mountain Hall. (All ticket holders will be notified prior to the day if we need to relocate)

Tickets are limited and cost \$45 (Adults), \$15 (Youth 12-16 years), kids Under 12 yrs, free accompanied by a paying adult. Gates open at 3pm. To book visit www.trybooking.com/BZVDN or phone 0405416289

Ryan Howard

TRIVIA NIGHT

Friday the 11th of November 2022
6:00pm - 10:00pm
Happy Hour from 6-7

Bring your friends, family or co-workers and create a team to compete for incredible prizes

For bookings please visit our website or call us on (02) 4373 1522 Ext 4

www.the-springs.com.au

DJF HAULAGE

- Sand • Soil • Gravel • Road Base
- Chicken Manure Supply and Shed Cleanouts • Bulk Deliveries
- B-Double Prime Mover • Truck and Dog
- Bogie Rigid-Tipper • Bogie Rigid-Tautliner • Semi-Tipper
- 45ft Flat-top, Stepdeck & Tautliner

Dallas J. Fabian
0417-285-047
dallas@djfhaulage.com

RURAL INSURANCES

If you're in need of assistance with your insurances give Shortland Insurance Brokers a call!

4324 5244

info@shortlandinsurance.com

Level 2, 27 Dane Drive GOSFORD

Quote the codeword: **"MOUNTAIN"** for special offer

COASTAL TRUCK LICENCES

LR to HC Licences

Paul Viola: 0437 006 060

ABN: 36 659 041 880

info@coastaltrucklicences.com.au

Coastal Truck Licences



Central Mangrove Public School took on the operation of the cake stall at the Country Fair.

The students were guided by the school staff, mixing, baking and icing various goodies.

Many parents, CWA and community members also contributed ingredients, cakes and slices.

We received donations of ingredients from Coles & Woolies - thank you!

We didn't know if we would have enough cakes but on the day the tables

were piled high.

School staff and parents managed the stall and were kept very busy all day, selling out completely.

After two years of cancellations due to COVID the Fair was a great success.

Thanks to the school staff, parents, community members and not to forget, the students for their contributions.







CENTRAL COAST
SELECT
PROPERTIES

FOR SALE

Guide \$3,750,000 - \$3,950,000

206 Konda Road, Somersby

 3
 1
 10
 65.6 ac

Private, Pristine and Peaceful

Nestled at the end of a quiet country lane, this is the one that you have been waiting for!

Offering a high degree of privacy and serenity, combined with gently sloping, mostly cleared land and a bountiful water supply, each of those a hot commodity in the acreage market.

At 65 acres and with RU1 zoning, this is the first time a substantially sized, useable acreage has come on the market in Somersby in almost 4 years.

Somersby itself is highly sought after for its acreage lifestyle, close proximity to amenities, elevated position and famous loamy soil.

This property has stunning water availability, with 5 large dams fed from spring flow on the property.

Currently operated as a small scale Macadamia farm, this property is ready and waiting for you to move straight in and enjoy, or use as the ultimate canvas on which to develop your rural paradise.

There is a comfortable and beautifully maintained double brick residence, with views across the dams and to the distant west.

At the heart of the property is a three sided, north facing machinery and nut processing shed. At 17.5m x 12m, there is plenty of space for storage of farming equipment.

Come and see it for yourself! Contact Tony Gilmour 0400 723 193 or Kate Kerslake 0427 233 090 to arrange your private inspection.

Office Address:

Suite 1,
2/872 Pacific Highway
Lisarow NSW 2250

P: (02) 4324 8486

E: info@ccselect.com.au

Contact one of our agents | CALL 02 4324 8486

www.ccselect.com.au





NEW TO MARKET

1805 Wollombi Road, Mogo Creek 2 1 4 40 Acres

RARE SANCTUARY - Nature lovers will fall in love with this character-filled acreage surrounded by wildly beautiful National Park. Run entirely on solar power, rain water with a creek bordering this property. Fully renovated, whole house water filtration system, veggie gardens with green house plus citrus orchard, A/C, two large sheds and stables, phone, satellite internet, and TV connected, back-up 18kva generator.



NEW TO MARKET

5 Gartung Road, Galston 6 4 4 5 Acres

SANDSTONE HOMESTEAD A RARE RETREAT - Stone Lifestyle Team is proud to bring this much-cherished "Re-Invented Classic Sandstone Homestead" to the market.

Offering a glimpse of country heritage housing from more than a century ago retaining many of the period features including 2 open fireplaces plus slow combustion stove, high ceilings, ornate bathrooms & french doors.

Set on 5 scenic acres of beautiful parklands, quaint garden surrounds the homestead, guest cottage & teenagers retreat flowing down to the boundary creek. Featured previously in "The Country Life" magazine. Taking top prize with "Nouvelle" kitchen.



1626 Wisemans Fern

\$2,200,000

LARGE BLOCK WITH HUGE PO
this is not one to be missed.

The original country home feat
dining and kitchen. Located at

The second residence is a one b

The property is set back from t
production) zoning allowing fo

Being in such a convenient loca
property also makes for a great

Your leaders in lifestyle property.



Stone

Scott

stone



SOLD

ry Road, Central Mangrove

4 2 2

23 Acres

POTENTIAL - Situated in the heart of Central Mangrove, this 23 acre property has a lot charm. With dual occupancy and a stunning block

atures 3 bedrooms plus a separate study, perfect for working from home. The house opens up to a large living room, with a separate
the rear of the home is a spacious covered deck, providing a great spot to enjoy the serenity off the location all year round.

bedroom timber cabin, providing a great opportunity for guest accommodation or even generating a rental return.

he road, creating a quiet and peaceful environment. The block features some cleared area, a large dam & RU1(Primary
or a range of opportunities. Also featured is a commercial bore plus a domestic water licence.

ation, local shops & schools are just minutes away. For larger shopping centres, Wyong and Gosford are within a 20 minute drive. This
t weekend being just 50 minutes to the North of Sydney.

Real Estate Wyong. Servicing the Central Coast.

Wall 0413 965 616 Shaun Coffey 0417 400 556

realestate.com.au



STONE

Kulnura & District Garden Club – November 2022

A determined bunch of 26 members, in a parade of colourful umbrellas and gumboots, filled the award-winning gardens of Heidi and Angela at Wyong Creek for our October meeting! We were so excited that the local floodwaters had subsided enough to enable us to visit, although a week later than planned. Angela and Heidi shared stories of their gardening journey, and generously offered cuttings and words of wisdom.

We held our monthly competitions for exotic and native blooms, and our lucky raffle winners went home with some beautiful plants to add to their collection. The delicious morning tea

in a stunning location encouraged animated conversation and the rain only added to the atmosphere.

November in the garden:

As we enter the last month of Spring, many of us may have forgotten what sunshine looks like. The sudden hot days and warmer winds can take us by surprise, so it's important to protect plants from sun and wind. With the abundant rainfall of recent months we have not had to do as much watering, so limber up those watering muscles, and ensure pots don't dry out.

- Mulch around fruit trees and other plants (remember to keep the mulch away from the stem / trunk of the tree)
- Propagate plants by taking soft wood (green) cuttings
- Propagate strawberries from runners
- Place straw underneath strawberry plants to keep the fruit off the ground
- If you have a water garden, thin out existing aquatic plants and fertilise
- This is the last month to plant citrus trees and evergreen shrubs
- Remember to stop and smell the

roses which, in spite of the excessive rain, have bravely bloomed.

Plant vegetables - artichoke (Globe), asparagus, basil, beans, beetroot, broccoli, cabbage, capsicum, carrots, celeriac, celery, chicory, chilli, chives, coriander, cucumber, eggplant, kale, kohlrabi, leeks, lettuce, okra, oregano, parsley, parsnip, potatoes, pumpkin, radish, rocket, rockmelon, silverbeet, squash, sunflower, sweetcorn, tomatoes, turnips, watermelon, zucchini

And flowers – amaranthus, aster, begonia, candytuft, carnation, celosia, hollyhock, linaria, nasturtium, petunia, portulaca, salvia, scabiosa, Sweet William, verbena, wallflower, zinnia

“Your first job is to prepare the soil. The best tool for this is your neighbour's motorized garden tiller. If your neighbour does not own a garden tiller, suggest that he buy one!” - Dave Barry

We are about to harvest our garlic, so I thought I'd share this irresistible recipe for a caramellised garlic and goats cheese tart from Ottolenghi's "Plenty" cookbook.

Ingredients

- 13 oz/375g all-butter puff pastry
- 3 medium bulbs of garlic, cloves, separated and peeled
- 1 tbsp olive oil
- 1 tsp balsamic vinegar
- 1 cup/220ml water
- ¾ tbsp caster sugar
- 1 tsp chopped rosemary
- 1 tsp chopped thyme, plus a few whole sprigs to finish
- 4 ¼ oz/120g soft, creamy goats cheese
- 4 ¼ oz/120g hard, mature goats cheese
- 2 free-range eggs
- ½ cup/100ml cream
- ½ cup/100ml crème fraîche
- salt and black pepper

Method



Captivated members



On The Go Constructions Pty Ltd
Specializing in the building of chicken sheds

Charlie Muscat is well known in the Industry, with over 12 years experience and has a reputation for quality workmanship.

* New Chicken Sheds * Tunnel Conversions * Roofing
* Machinery/Farm Sheds/Stables/Lofts/Piggeries * Coolrooms
* All Fabricating services - All frames & trusses are fabricated by On The Go Constructions to Engineer specifications.

Call Charlie on 4374 1114 or 0408 684 719

VISION FOR LIFE...
For all your concrete & pumping services,
call Louis on 0418 409 576

ALL ASPECTS OF TREE WORK



- Truck & Chipper
- Cherry Picker
- Excavators
- Forestry Mowing - maintenance of vegetation including noxious weeds such as lantana and blackberry.

Local Arborist, friendly & experienced team. Insured and certified.

Tim - 0412 985 422 or tijanotreco@gmail.com

1. Roll the puff pastry into a circle to line both the bottom and sides of a 28cm fluted tart tin and line with the pastry. On the bottom of the pan, place a large circle of greaseproof paper and fill with a layer of dry baking beans or rice. Place into the fridge for approximately 20 minutes.

2. Preheat the oven to 180°C and bake the pastry case for 20 minutes, remove both the beans and paper and bake for another 5 minutes so the pastry is cooked and golden but not over-browned. Remove from the oven and leave to one side.

3. While the tart case is cooking, place the garlic cloves in a small saucepan. Cover with cold water and bring to a gentle simmer, cook for 3 minutes then drain through a colander or sieve.

4. Wipe the saucepan dry then add the cloves and olive oil and fry on a high heat for 2 minutes and no more. Add the balsamic vinegar, 1 cup of water and bring to the boil. Simmer gently for 10 minutes.

5. Add the sugar, rosemary, chopped thyme and ¼ teaspoon salt and continue to cook on medium heat for a further 10 minutes, or until most of the liquid has evaporated and the garlic cloves are coated in a dark caramel syrup. Set aside.

6. To assemble the tart: break both goats cheeses into pieces and scatter in the pastry case and spoon over the garlic and any syrup.

7. Whisk together the eggs, creams, ½ teaspoon salt and some black pepper. Pour over the garlic and cheeses making sure that you can still see both on the surface.

8. Reduce the oven temperature to 160°C and bake for 35-45 minutes, or until the tart filling has set and the top is golden brown. Remove from the oven and leave to cool a little then take out of tin, lay the remaining thyme sprigs on top and serve warm. There won't be any leftover, but if there is, this reheats beautifully.

Book of the month: Bedside

Big Flower
Pots Statues Fountains
Plants Flowers Gifts
SUPER NURSERY

24 Burns Road, Ourimbah 2258
beside M1 Interchange

02 4362 2236
c.boes@hotmail.com
www.bigflower.com.au

The Biggest Nursery on the Central Coast - 10 Acres!
Open 6 days Tue to Sun 9am till 5pm Closed Mondays

Companion for Gardeners: An anthology of garden writing for every night of the year, Jane McMorland Hunter (editor)

A mix of fact and fiction, fantasy and experience, the Bedside Companion for Gardeners is a treasure trove of green-fingered inspiration where practical advice blends seamlessly with poetry and prose from intrepid gardeners past and present. Dip in and out of this collection with an entry for every night of the year that draws on writing through the ages and from across the globe.

The Bedside Companion for Gardeners incorporates practical advice from the 17th-century gardening diarist John Evelyn; inspiring prose from Elizabeth von Arnim and John Milton; astute commentary from Horace Walpole on William Kent and Nancy Mitford on the vulgarity of a Surrey garden. Kipling offers practical advice, while Tennyson waxes lyrical on an Arabian night garden.

The perfect gift for any gardener, this magical book is an invaluable

source of inspiration and guidance to revisit throughout the year.

<https://www.amazon.com.au/Bedside-Companion-Gardeners-Garden-Enlightenment/dp/1849947139>

What do you get if you divide the circumference of a pumpkin by its diameter? Pumpkin pi.

November Meeting:

We meet on the second Monday of each month at 9:30am for a 10am start, and our next meeting will be on Monday 14th November. We are visiting the garden of one of our new KDGC members, located at Somersby. Please contact us for further information and venue details.

We'd love to see you there and we welcome guests.

Please email kulnuradgc@gmail.com for information about meetings, membership, or any other questions, or feel free to call Jacqui on 0455 364 262

Happy gardening!

Karynne Courts
(KDGC Committee member, 2022)

CUSTOM DESIGN | BUILDINGS | EXTENSIONS | ALTERATIONS | DECKS |   

0410 100 616 | kim@kdfconstruction.com.au | LIC NO. 267735C

CVO
COAST & VALLEY
OVERLAND

OILS CAMPING CLEANING
U6, 17 CRAFTSMAN AVE, BERKELEY VALE
www.coastandvalleyoverland.com.au
4388 5911 0437 88 5919

A NEW SAFE SPACE FOR MARGINALISED YOUTH

Rainbow youth rejoice! Naughty Noodle Fun Haus has announced the launch of YAAS! Young, Authentic and Social Program, a transformative arts and culture program for Young People aged 12-24 living on the Central Coast with a focus on diverse identities and abilities.

Supported by the Australian Government Department of Social Services the program aims to empower participants, develop personal resilience, leadership skills and build community ties, friendships and connections through activations, hang outs, events, performance, creative workshops & celebrations as well as ongoing fortnightly drop-ins for 12–17-year-olds. 66% of LGBTQIA+ youth in Australia still experience bullying based on their identity and these kids are 12 times more likely to experience depression due to this harassment. Multiple LGBTIQ Youth suicides across the Central Coast last year alone were directly attributed to bullying and solidified the need for a focused and collaborative federal, state and local approach which focuses on marginalised youth not as a tack on program but as the spotlight for building resilience, connection



OPEN 7 DAYS
40 YEARS LOCAL



General Dentistry | Emergency Care | Cosmetic Dentistry
Orthodontics & Invisalign | Dental Implants | Oral Surgery
Sleep Dentistry IV Sedation | Wisdom Teeth Removal
3D CT Scanning | CEREC same-day ceramic restorations

02 4323 1933 | www.vcdental.com.au
Suite 10, 36-40 Victoria Street, East Gosford NSW 2250

NEW PATIENTS

Comprehensive checkup & clean
Includes up to 5 x-rays
No Gap (with health insurance) or **\$290**

OFFERS (all patients)

Free orthodontic consultation
Free dental implant consultation
Free cosmetic makeover consultation
Sport mouthguards: **No Gap** or **\$99**

FINANCE

We **bulk bill** the Medicare CDBS
Zip Pay & Zip Money payment plans
We partner with **SuperCare**

and networks. Working with Police, Headspace, GNL and PCYC - YAAS! Participation will reinforce the transformative impact of empowering regional young people to explore and express their unique creative identity.

Leading the YAAS! Program is Youth Engagement – Senior Youth worker and Producer, Carlee Heise who is returning home to the Central Coast for the role. She is a performance-maker and youth worker, passionate about amplifying young people’s voices. Carlee has nurtured young artists through her work at

Shopfront Arts in South Sydney, and has supported youth experiencing homelessness in crisis and transitional housing at Project Youth in the Sutherland Shire.

“I am delighted to be leading the YAAS! Program, I spent my youth living in Regional NSW, and I know how significant a safe and welcoming space like YAAS! would have been for me. YAAS! is here to uplift and empower young people, proudly shining a light and giving voice to marginalised youth.

Follow YAAS!



Services:

- Site Levelling
- Land Clearing
- Horse Arenas
- Roadways
- Certified Fill Material

Machines:

- Excavators / Augers
- Posi Track with Laser Level Grader
- Dozer
- Truck & Trailer Tipper

Michael Schembri
0419 236 788

Follow us  

POOL WATER TESTING & POOL CHEMICALS NOW AVAILABLE IN STORE

1109 Peats Ridge Road
Peats Ridge
Ph: 43731466



BUTTERFLY MAGIC

by Rhonda Hillyer ©

This is the 11th instalment of a serialised publication of the novel "Butterfly Magic"

CHAPTER XI MICHAEL MEETS WONAMBEE

This time when Michael awakened, he knew he was lying on a soft bed of dry leaves, and he could see the opening in the fork of the tree. He immediately realised, that he had been sleeping in the fork of the tree. It seemed so long ago since he had gone to sleep, but now he was quite free to come or go as he pleased. Relief swept through him, and he laughed at himself as he thought about the nightmare he had experienced throughout the previous night. It couldn't have been real – it had to be a dream!

He crawled out into the warm sunshine, and he found a strangely familiar container of water from which he drank thirstily, and then began to look around for some familiar bush tucker to eat. He walked down towards the river and sat on the bank.

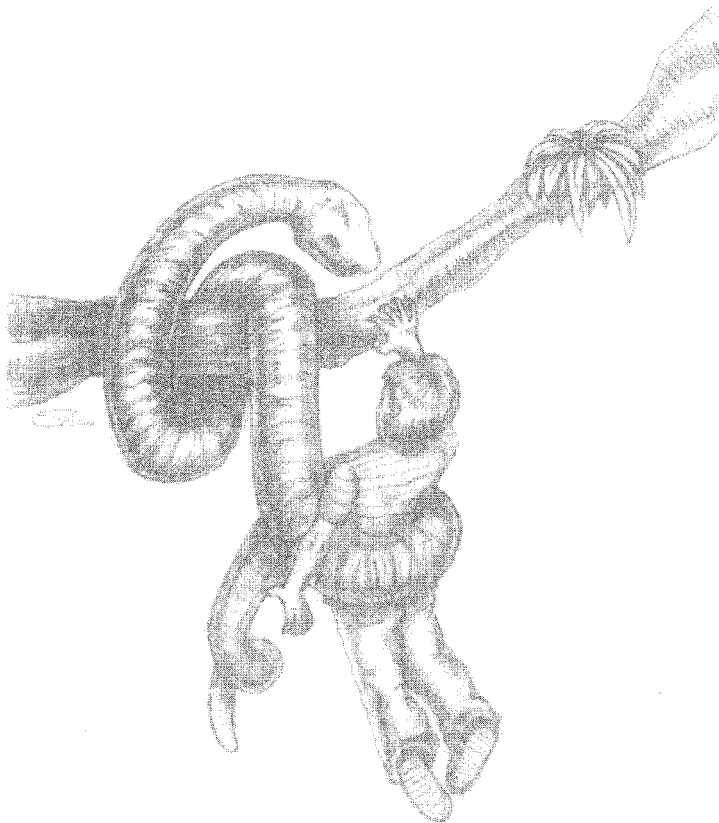
The birds were strangely silent, and the happy little finches who had accompanied him along the river yesterday were nowhere to be seen. All was still. There was, actually, no sign of life and the hairs on the back of Michael's neck began to stand on end. Something was wrong! He forgot that he was hungry. He clambered to his feet and began to run along the bank of the river, then decided he should go to the other side and head in the direction of where Zeb, Rebecca and Fred had gone. By now he was not sure that his dream was not real, and he was frightened. As he crossed the river he slipped and fell into the cold water and scraped his knees on the rocky bed. As he crawled up on to the opposite bank, he could see that both knees were bleeding but, strangely, he felt no pain from them. Then a movement above him caused him to look up. Fear and terror took hold of his entire body, and he froze.

A triangular shaped head with two evil eyes had him mesmerized, and at the apex was a mouth out of which a long tongue kept flicking in and out between sharp teeth. The thick neck behind the head, and a monstrous body, the like of which he could never have imagined, loomed in the background. Michael knew that he was in great danger and it seemed nothing could help him now.

For the first time in his life, the situation which confronted him made him feel helpless and totally unable to save himself, he was at the mercy of a monster.

Seemingly from out of nowhere, the tail of the monster suddenly swirled out and wound around Michael's waist pulling him up on his feet. It felt like an iron cordon around his waist, and was tightening its grip. Then just as suddenly, he was swept off his feet and twirling around high up in the air. The world seemed to be spinning around him, so fast that he could not distinguish the bush from the sky. He could not see the trees, however, he did feel his face being sharply slapped by branches and/or saplings as he flew passed. His face was now covered in blood from the numerous cuts. All the while this was happening he could feel the iron cordon tightening more and more around his waist.

The worst of it was the realisation he had brought this on himself. Now, Michael found he could not



Michael meets Wonambee

breathe and he soon felt everything going dark, it was a blessed relief when he could feel, see and know nothing. However, this was not the end for Michael. Just as all hope seemed to be gone, something happened to save him from what was a certain, horrible death. A bush turkey appeared on the scene, and when it approached the water from which Michael had emerged and began to drink from it, Wonambee saw this as a direct threat to his water. At that moment his attention was directed towards the bush turkey, and he was not going to allow the turkey to take his water. He dropped the boy and went to defend his territory and, with that, the bush turkey became his prey. Thus Michael was spared a doomed fate.

An adventurer, walking through the bush sometime later might have come across the rather peaceful sight of Wonambee lazing sleepily up a tree, very contented with his state of being. He, or she, would have missed the rather gruesome sight of the way in which Wonambee would have encircled the unfortunate bush turkey with his own body, crushing it to death. The body and bones would have been compressed into a shapeless hulk, after which Wonambee would have then prepared it for his dinner by licking it all over, thus coating it with saliva. Once the meal was prepared Wonambee would start eating until the meal was finished and the turkey was completely consumed.

Thus, does the wonambi live and thrive in this magical world. The animals of prey become the food it eats. It kills only in order to survive, and not to derive pleasure from inflicting pain on those helpless and vulnerable animals. However, he is never in any doubt as to his own role in the scheme of "wild".

Michael lay right where he had been dropped. His face and any exposed parts of his body were bleeding and bruised, his clothing dishevelled and even torn. He was a pathetic, broken, crushed helpless creature who could no longer do anything to help himself. If no help came, even though he had been saved from Wonambee by the hapless bush turkey, he would not survive another night in the bush.

School Based Apprenticeships Provide Opportunity In Tightening Labour Market

The tightest labour market in over 50 years has left many local businesses struggling to recruit local talent, with many employers asking for increased investment in skills training and targeted immigration.

The director of O'Brien Plumbing Wyong, Brad Pesavento, knows all too well the challenges faced by local businesses in filling positions.

"It has been very hard – you cannot find anyone really. We have put ads out and hardly get a response, and if we do it is often from someone without the right skills or who does not have working rights.

Recently, Mr Pesavento gained a new employee, Zach Martin, through the school-based apprenticeship and traineeship program (SBAT).

"Zach is really good; he is a hard worker and gets along with everyone. It is definitely something I am going to look more into in finding new people through these school-based apprenticeships."

"Currently we are looking for at least a couple more full-time positions to be filled into the next year."

Member for Gosford, Liesl Tesch MP recognises the ongoing issues faced by local businesses and praises forward thinking initiatives such as

SBAT and the Educational Pathways Program in upskilling young workers with vital skills for the Central Coast.

"Initiatives such as the SBAT program are a fantastic opportunity for local businesses to engage with young people at the beginning of their careers, building the workforce of our future."

Ms Tesch encourages local businesses to engage with students as a means to train new talent. The SBAT program combines the skills of education, employment, and vocational training in order to grow the skills of our youth for current and future success.

"For years we have struggled with an underperforming labour market and relied too much on importing talent rather than developing talent locally. We need both, and the current labour shortage has highlighted real challenges that remain in upskilling and for businesses to find new ways to adapt to a modern workforce."

Students interested in this program should contact their school careers advisor to learn more.

Employers are invited to visit <https://education.nsw.gov.au/public-schools/career-and-study-pathways/educational-pathways-program/>

Are you holding onto "stuff"?

In previous articles I have explained that our exterior world is a reflection, or mirror, of what is going on in our internal world (our thought/emotions/beliefs). This means that everything we have around us, eg. our homes, our vehicles, our work places, people and objects represent an 'emotional attachment' to those things.

A good example to use to demonstrate how people can become attached to things, at an unhealthy level, would be hoarding. Many people develop this habit for a multitude of reasons, some a lot more than others, and sadly many can feel helpless in understanding the deeper meanings behind this habit and what they can do to improve their situation.

program-initiatives/enhancing-sbat-engagement or contact SBAT Engagement Officer, Ms Cecile Oakes at Cecile.Oakes@det.nsw.edu.au to learn more about SBAT opportunities through the Educational Pathways Program.

Photo Caption: Apprentice Zach Martin with O'Brien Plumbing Wyong Director, Brad Pesavento

Liesl Tesch MP

Member for Gosford

MANGROVE PRODUCE AND HARDWARE

1668 Wisemans Ferry Rd, Central Mangrove (just 1km from the Crossroads)

NEW GREENFIELD MOWERS NOW IN STOCK!



TWO MODELS AVAILABLE:

- ▶ CLASSIC &
- ▶ DELUXE

CHECK THEM OUT TODAY!



- ◆ Horse Feed
- ◆ Fertiliser
- ◆ Paint
- ◆ Pet Food
- ◆ Timber
- ◆ Plumbing
- ◆ Bird Seed
- ◆ Hardware
- ◆ Fencing
- ◆ Vet Supplies
- ◆ Hand Tools
- ◆ Electric
- ◆ Chemicals
- ◆ Power Tools
- ◆ Fencing

Mon-Fri: 7:30am -5:00pm
Sat: 8:00am -2:00pm

Ph: 43731259

SHOP ONLINE AT
www.tuckersstore.com.au
or shop.truevalue.com.au

A concept I have explained to my clients is to imagine how they would feel if everything were to suddenly be taken away, leaving just them, sitting alone with nothing. Most people feel uncomfortable or challenged by this, as they have unconsciously created an environment for themselves (myself included) where they have stuff 'sitting around' just in case they might need them one day. My explanation for why most, if not all, people develop this habit is due to a lack of faith, or trust, that the universe will always provide them with what they need, when they need it. (Note that what the person's ego thinks they need, the universe might know they do not.)

At the end of the day, everything in our surroundings is just energy. Energy is meant to move, it's meant to be fluid, it's meant to be transferred or exchanged, and it's meant to be shared. It is not meant to stay in one spot and 'stagnate'. (This also speaks for the emotions we acknowledge, process and release, which is just the movement of energy through us.)

So, if someone has created an environment outside of themselves that is cluttered, disorganised and unkempt, does this not reflect the emotional state of the person living within this environment? And if a person finds themselves in such a predicament, how do they go about rectifying it?

The most important aspect of the process is to realise that a person might hold onto things, not because they actually need them, but because they have trouble facing the emotions that may rise up by having to let go of them. Unfortunately, some people who have not been prepared to go through the slower, easier process of letting go of certain possessions, will learn the hard way when the universe takes action and forces it to happen. (Eg. many natural disasters such as floods, fires, mudslides, effects of war, or other scenarios, like theft, or misplacing/losing something.) So, one way or another, the outcome will

eventuate if the universe intends it. But most would agree it's easier to do it the slower, less traumatic way, especially when they have the quiet urge to do so.

For those at the 'hoarding' end of the spectrum, it can take a lot of courage to get started, and it may be easier, for some, to have a trusted support person who can be with you to help you get started. (Someone with a lot of patience, understanding and compassion.) I would start very gently, just focusing on items that you don't feel as attached to, so that it helps to get the momentum going. And just take baby steps. For a hoarder, I can imagine that it can be challenging enough just to let go of even one, two or three items. And work from there. At a pace that YOU can handle, in a way that resonates with you.

Another important part of the process is to do some self-reflection on how you feel as you remove things from your space. Why did you hold onto them? Do they remind you of someone you have lost? Do you feel like they (in spirit form) would be judging you to know you let go of their stuff? (I can guarantee you they wouldn't.) Do you feel like you will 'forget' them if you don't hold onto their 'stuff'? (Has their stuff become your stuff, without realising it?) Are you concerned you might not be able to come across this item again? How long is it since you actually used it? Do you have belief systems in place that make you believe you cannot manifest this item again if you so desire? How will you feel if you never see this item again? Are you holding onto them because you want to or because others are telling you that you should? There is much contemplation that can take place as a person sifts through things. And if the person becomes emotional during the process, they can take solace in the fact that the process is helping them heal something on the inside.


I guarantee that as a person goes through the process they will begin to feel less burdened, lighter in spirit,

more liberated and less 'tethered' to their surroundings. (Think of how 'free' one feels when they offload most of their possessions and travel around, gypsy style.)

And another aspect of course, is whether a person has the means and resources to find new homes for items, or to sell them, or dispose of them. The person may think they can't find a way, but if you have the intention to get rid of something that no longer serves you, the universe will help you find a way...

I am still doing 'free' practise QHHT sessions (2-5hr interview and 2hr hypnosis) to complete my QHHT internship. QHHT = Quantum Healing Hypnosis Technique. For enquiries or bookings, please email me at shazzaunitt@protonmail.com or call 4376 1014. Soul Speak Healing sessions (variable hours) are available for those who are not keen on the hypnosis component, but it can still bring incredible insight as to how one views their spiritual, emotional and physical wellbeing.

Sharyn Unitt, Soul Speak Healer and QHHT Practitioner Level 1 (intern)



OUR SERVICES INCLUDE:

- Custom built homes • Granny flats
- Extensions • Carpentry services
- Renovations • Decks & Pergolas
- Waterproofing & Bathroom renovations
- Disabled modifications
- Asbestos removal
- Building maintenance

Dane Meredith | Builder
 0243513200
 0420906499
 dane@ebhbuilding.com.au

CNS Electrical
 Lic No. 214132C



Your local Electrical Contractors on the mountain, specialising in Rural, Domestic, Commercial and Industrial works, including:
 Excavation, Trenching, Mains & Sub-mains, Voltage Calculations & Future Planning.

Call Cameron for a quote on: 0438 695 600
 Office: 02 9157 7646
 Email: admin@cnsselectrical.com.au

The Grass Cutters

- Slashing
- Rock picking
- Farm cleaning and clearing
- Cultivation and more
- Obligation-free quotes



Call **0419 412 993**
 Email pat@thegrasscuttersrus.com

See us in action at: thegrasscuttersrus.com

REGULAR ACTIVITIES & MEETINGS

RURAL FIRE SERVICES

Bucketty RFS	Weekend Training Station Maintenance General Meeting	3rd Sat, 9am-12 pm, breakfast 8.30am Every Thurs as required, generally 10am-1pm 3rd Sat in even months, at 1pm, All welcome buckettyrfs@gmail.com (02) 4998 8130
Calga-Mt. White RFS	General meeting	3rd Monday of the month, 7.30pm at Pacific Hwy Fire Station Mt. White
Kulnura VBFB at Greta Rd Station	General meeting Training	1st Wednesday of the month, 7.30pm 3rd Wednesday of the month 7.00pm
Mangrove Mountain RFS Bloodtree Rd	General Meeting Training / Maintenance	Last Wednesday of the month, 7 pm, All Wednesday's except last of month, 7 pm
Spencer RFS	General Meeting Training Junior Training	2nd Monday of the month Meeting 6.30pm 3rd Monday Maintenance 6:30pm 4th Monday Training 6:30pm E: captain.spencer@ccrfs.org.au Alison Wade 0415 668953. 4778 Wisemans Ferry Rd
Somersby RFS	General Meeting Training/Maintenance	First Wed of the month 7.30pm at the Station Every Wed night 7.30 at the Station (except before Wed general meeting)
Yarramalong RFS		Information: www.facebook.com/ YarramalongRuralFireBrigade/ Phone contacts: 0406 360588 or 0418 280764 Email: volunteer@yarramalongrfs.org.au

COMMUNITY & SOCIAL

Coastlink Friendship Group		Wed 9.30am-2pm at the Health Centre, Nurses Rd, Central Mangrove
Country Women's Association (Somersby)		Second Wed of each month, at Somersby Hall Wiseman's Ferry Road, Somersby, contact Sue, 43721280 or 0407768000.
Country Women's Association (Peats Ridge & District)		First Monday of the month at Community Hall, Peats Ridge School. Any enquiries please contact Christine 0419 400163.
Country Women's Association (Mangrove Mountain Evening Branch)		2nd Tues of the month at Mangrove Mtn Hall Start 5pm, meeting 7pm. Ph Judy 43771728
Gosford North Inner Wheel club		2nd Wed each month 7pm at Phillip House in Kariong. Contact: Glenis Ph: 0400 486 760
Gosford World Vision Community Group		4th Tues 11am in Presbyterian Church, West Gosford Contact: Glenis Ph: 0400 586 760. https://permaculturecc.org.au/
Permaculture Central Coast Kulnura & District Garden Club		Second Monday, 9.30 for 10am start. Jacqui Maxwell 0455364262 kulnuradgc@gmail.com
Mangrove Mountain & Districts Community Group Meeting		1st Thurs of the Month, 7pm, Mangrove Mtn Hall.
Mangrove Emergency Planning & Communications Committee		Contact: mepccinc@gmail.com, 0412669649
Mangrove Mountain Country Fair Committee Meeting		2nd Thur of month except Jan, 7:30pm, Mangrove Hall. Pres- Shane 0417 436 529 www.mountaindistrictsassociation.com.au secretary@mountaindistrictsassociation.com.au
Mountain Districts Association (MDA)		Second Tuesday of the Month 6.30pm at the Mangrove Memorial Club
Mountain District Football Club Meeting		President Robyn Downham 0414248224 Email info@rivercares.com.au
River Cares for the Lower Hawkesbury River District		Friday 7.15am at Phillip House. 43404529
Rotary Club Meeting		President Brad Maisey, Community Meetings, 4377 1167, spencercpg2@gmail.com
Spencer Community Progress Group Inc		Last Fri of month. 12.00 noon Spencer Community Centre, Jennifer Dayes 4377 1364 Articles to: spencercpg2@gmail.com
Spencer Community Ladies Social Club	Newsletter	Tue 9.30am-12.30pm, Kulnura Tennis Courts. Enquiries: Alison Palmer 0427731548.
The Mountain Tuesday Social Tennis Group		Every 2nd month. Check website for further details. www.somersbyequestrianclub.org.au
Somersby Equestrian Club Club & Committee Meeting		Tues & Sat, 9am-5pm. Contact: Alan Hunt 4566 4626 or Adrian Acheson 0448 833 781

SPIRITUAL

Anglican Service - Mountain Districts		Every Sun 8am at Peats Ridge Scout Hall, Sunday School during school terms
Mangrove Mountain Christian Group		General Meeting 3rd Monday, 7.30pm at CTC (next door to Mangrove Hall)
Mangrove Mountain Union Church, Christian Service		9.30am second and fourth Sundays. cnr Bloodtree Rd & Wisemans Ferry Rd
St Barnabas Non-denominational Service Yarramalong		3rd Sunday each month, 11.00am. (Easter & (Christmas Carols dates to be advised)
Serbian Orthodox		2nd & 4th Sun. of the month. 10 am, followed by luncheon, tea, coffee, cakes (cost \$20). 1184 Peats Ridge Rd, Peats Ridge
Kariong Community Baptist Church		Sun @9.30am, Church & Kid's Program, Kariong Public School Hall, Chris Clarke email revcrc@hotmail.com

(cont'd next page)

LIVESTOCK MARKET REPORT



Liveweight Sale Report 17th October 2022

Total of 450 cattle yarded at today's sale. 415 trade/vealers and 35 export cattle. The majority of the yarding was made up of good quality Euro x weaners and heavier Angus weaners and yearlings. Crossbred weaners steers and heifers up to 70c/kg dearer. Angus weaners up to 30c/kg better. All other areas were firm to 15c/kg better.

- Angus steers up to 250kgs 650 to 810c/kg;
- Crossbred weaner steers up to 250kgs 600 to 720c/kg;
- Angus steers 250-350kgs 650 to 710c/kg;
- Crossbred Angus steers 250-350kgs 600 to 700c/kg;
- Yearling steers 500 to 620c/kg; No butcher vealers to quote;
- Weaners heifers up to 250kgs 550 to 700c/kg;
- Weaner heifers 250-300kgs 500 to 680c/kg, avg 640c/kg (up 30c/kg);
- Heavier yearling heifers 570c/kg;
- Bullocks 460 to 495c/kg;
- Cows 250 to 396c/kg;
- Bulls 290 to 310c/kg.

Liveweight Sale 10th October 2022

230 cattle yarded. There was a mixed yarding of quality weaner and grown cattle offered today.

- Weaner steers, all breeds, up to 250kgs 550 to 790c/kg, avg 700c/kg;
- Weaner steers 250-300kgs 520 to 700c/kg, avg 640c/kg;
- No butcher vealers to quote;
- No yearling steers or feeder steers to quote;
- Weaners heifers up to 250kgs 500 to 690c/kg, avg 630c/kg;
- Weaner heifers 250-300kgs 480 to 615c/kg;

- No yearling heifers to quote;
- Grown steers 400 to 450c/kg;
- Cows 280 to 390c/kg;
- No bulls to quote.

Coming Sales

Tocal Horse Sale

Sunday, November 6th, 1pm

Gloucester Store Sale

Thursday, November 17th, 11am

Maitland Store Sale

Saturday, November 19th, 12 noon

A friendly reminder that we are often in the area seeing clients and looking at their livestock and if you would like us to call in be sure to give us a call.

Like and share our Facebook page!

Keep up to date with bowelidbury.com.au

*Michael Easy & Rodney McDonald
Bowe & Lidbury
52 Kyle Street, Rutherford NSW 2320
P: 02 4932 7066*

.:KSR.:.

**NEW
GRAVEL
ROADBASE
\$42/T
DELIVERED**

0411 868 437

REGULAR ACTIVITIES & MEETINGS (cont'd)

Divine Retreat Centre (Ph 04 6848 6782)
160 Hensons Road, Somersby
www.divineretreatcentre.org.au

Catholic Service - Spencer
- Wollombi
- Somersby
- Yarramalong

YOUTH
Junior Girl Guides 5-10
Girl Guides 10-15
Scouts, Cubs & Venturers
Peats Ridge Scout Hall
Mangrove Mountain Playgroup

HISTORICAL
Brisbane Waters Historical Society
Dharug & Lower Hawkesbury
Historical Society Inc.
First Fleeters Central Coast Chapter
The Pearl Beach Aboriginal History Group
Wyong District Museum &
Historical Society

ACTIVITY/HOBBY
Central Coast GNU/Linux Users Group
Coastal Communicators Toastmasters
Craft/scrapbooking

HALL BOOKINGS
Kulnura Hall
Mangrove Mountain Hall
Somersby Hall and Mountain Districts
Culture and Heritage Centre
Yarramalong school of Arts / Hall

Daily Holy Mass 8.00am to 8.30 am
1st Fri, 5:30pm-8:30pm Divine Mercy Friday
1st Sat, 5.30pm-9:00pm, Divine Youth
Ministry, Young Adults (18-35yrs)
Last Sun, 9am-4pm, One Day Retreat
Holy Trinity Church, 2nd Sat of the month
4pm, Contact 43771374 or 43771168 as times
may change each month.
2nd & 5th Sunday of the month, 4.30pm Mass
at St Michael the Archangel, Wollombi.
Every Sat. evening vigil - 5.30pm St. Francis
of Assisi Centre, 30 Lutana Rd, Somersby.
1st Sunday each month, 11.15am St. Barnabas
All welcome. Enq 0428 438577

Kooree Guide Cabin, every Monday in school
term, 5.00pm - 6.30pm
Kooree Guide Cabin, every Monday in school
term, 6.00pm-7.30pm
Cubs meet 6.30pm - 8.30pm Wednesdays
Scouts meet 7.00pm - 9.00pm Tuesdays
Venturers meet 7.00pm - 9.00pm Mondays
Contact 0460 696 941
Every Tues (except school holidays) 9am to
11.30am, Kooree Guide Cabin. Bec G, PH:
0421 996 029 Anne, PH: 0412 526 557
Email: becgilmour@gmail.com

25-27 Henry Kendall St., West Gosford, Ph:
4325 2270. www.henrykendallcottage.org.au
Last Sat of month. All welcome, contact Jan
Kofron 0405321478 jankofron@optusnet.com.au
2nd Sat of the month, 10.00am for 10.30,
Point Clare Hall (except Jan & Dec). Contact
Jon 43116254 and Gavin 43404435.
3rd Fri of month 7.30pm Pearl Beach. Peggy
0411754577 pbaboriginalhistory@gmail.com
Open Sun to Thurs, 10am-2pm, other times
by appt. Contact 43521886 email info@alisonhomestead.com.au
alisonhomestead.com.au website: www.alisonhomestead.com.au

www.cclug.org.au - all most welcome
1st & 3rd Thurs of month, 6:45pm to 8:45pm
at Doyalson-Wyee RSL. Debbie 0421216952
Yarramalong Hall 4th Sun. of the month 10am
to 5.00pm cost \$12 per person ph 43561196

Hall bookings contact Annette Stackman
43561196 Committee mtg 3rd Thurs 7:00pm
at Hall- Open to all from community.
Hall bookings Ryan Howard 0405416289
Hall bookings: 0413 359 655
or AH 4373 1488
David Gillett 0416 097192
enquiries@yarramalonghall.org.au
<https://yarramalonghall.org.au>

REMINDERS FOR YOUR DIARY

Sydney Sandstone Soil Pit Workshop

11 Nov 2022 8:30 am - 4:30 pm, Somersby
For more information & to register:
<https://www.lis.nsw.gov.au/regions/>

Antennas - Digital
Hayward Video & Antenna Service
VAST Satellite Service
"Government approved installer"

Phone Ray Hayward
Mob: 0412 685 555

20 Sierra Crescent, Gosford East
Email: rayhay@bigpond.net.au



 LIC # 227507C

ELLIS
ELECTRICAL SERVICES PTY LTD
0411 317 506
Commercial | Residential | Industrial

Weed alert: Leaf cactus

Leaf cactus (*Pereskia aculeata*) is a spiky, climbing shrub that attaches itself to trees. It has the potential to invade coastal and subtropical areas of NSW.

It was recently found in Umina by a Weeds Officer from Central Coast Council. Be on the lookout for its identifying features such as its vine-like manner, long slender spines, unusually shaped yellow to orange fruit, and its white or pale yellow scented flowers. If you see leaf cactus, alert your local weeds officer immediately.

Leaf cactus is a spiny, perennial,



NEW WOMEN'S CRICKET TEAM SHAKING UP THE COMPETITION

The Brisbane Water Cricket Club has started a brand-new third grade women's team – The Bluetongues – and are already shaking up the competition with recent wins.

Team Captain Kelly Dearing is thrilled with the new team, saying it has allowed many women who have watched their sons and husbands play for years to finally get out onto the field.

“We have a large age range on the team, with the youngest player just 17 years old playing alongside over 50s. It is amazing to see all these women with different backgrounds and experiences get out onto the field and have some fun.

“Having a women's team develops the culture of the sporting club and

climbing shrub that attaches itself to other plants and tangles around trees like a vine. It can reach up to 12 m into the canopy.

For more information go to NSW DPI WeedWise website :

<https://weeds.dpi.nsw.gov.au/Weeds/LeafCactus>.

FOR SALE

GALE'S CITRUS - Bagged Citrus trees in various sizes available ph. 4372 1408 or mobile 0421 196 631

MULCH for sale. 10m³ Minimum - \$400.00. Delivery if applicable. David 0418 233595

DRAINAGE MATERIAL, certified crushed roof tiles. Delivery Charge only. Please phone 0438731015.

14 USED HARDWOOD POLES. 7m with min 150mm heads. suit netting or shed posts. \$300 each or \$3500 the lot. Kulnura. Ph 43761311.

provides important opportunities for all females to play a sport they love.”

Member for Gosford, Liesl Tesch, enjoyed meeting the team to give them their hat in an official handover.

“I cannot be more excited to see these wonderful women go out and have fun while dominating the wicket at the same time!

“I had the joy of meeting the team, and the sense of community and team spirit was already strong. It is always great to see in whatever context women coming together to have fun and support each other.”

This season began early October and will finish up end of March.

To find out more on how to enrol for next season, the Central Coast Cricket Association will distribute more information through social media, community boards, and around Adcock Park in June next year.

Liesl Tesch MP
Member for Gosford



Bikes n Motors

Service & Repairs

All Light Vehicles

Cars & Bikes

PH: 0491 622 080

bnm@bikesnmotors.com.au

1154 George Downes Dr, Behind Jerrys'



PTY LTD

DIVERSE

TRADING AUSTRALIA

Resource Recovery | Plant Hire | Site Remediation

Roads | Shed Pads & Sites | Dams | Council Approved Clean Fill

CALL 0408 843 677

admin@diversetradingleustralia.com.au

OUTLAND Mechanical & Maintenance Service

Licence No. MVRL54125 ABN 14814837840



Mobile Diesel Mechanic

- Specialising in Small Fleet Diesel Service
- Tractors • Farm Machinery • Mowers
- Earthmoving Machinery
- Welding

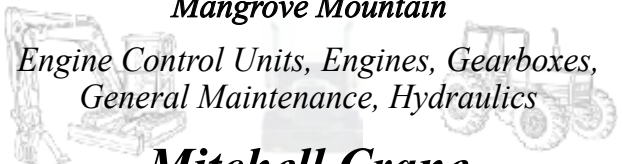
John: 0427 660 752 jhellyer67@gmail.com

Southern Diesel Services

ROAD, CIVIL AND AGRICULTURAL REPAIRS

Workshop / Mobile 24 HRS
Mangrove Mountain

Engine Control Units, Engines, Gearboxes,
General Maintenance, Hydraulics



Mitchell Crane
PH: 0431 095 365

CLASSIFIED ADVERTISEMENTS

These columns will be set aside each issue for residents to advertise inexpensively and effectively in their own local paper. If you have anything you wish to sell, buy, swap, etc., ring 4374 1039 or 0412 669 649 during office hours. Rates start at \$4.00.

FOR RENT / LEASE

HOME TO RENT in Kulnura, three bedrooms, two garages, on a farm, \$550 per week. Contact Frank on 0447767117

POSITIONS AVAILABLE

SUPREME POULTRY - 2598 Wisemans Ferry Road, Mangrove Mountain. Casual Poultry Processing - Process Line

Positions Include: Packing, Evisceration (Gutting), Live Bird Hanging. Day Shift: Monday - Friday Approx. 7am start.

No exp. necessary, on the job training provided. Call our office on (02)43741700 or email resume to: supremepoultry@hotmail.com

WATERMANS EXCAVATIONS is seeking a highly experienced and motivated excavator/machine operator to join our growing team.

Our requirements are as follows:

- Minimum of 5 years' experience and related certifications.
- A HR license
- Ability to work overtime, when required
- Able to work independently and meet deadlines.

To apply for this position, please email a copy of your resume to admin@watermansexcavations.com.au or call on 0431956445

APPRENTICESHIP - Heavy plant / Road transport diesel mechanic apprentice required. for local business. Must be keen to learn, prompt, reliable, drivers license would be advantageous, Phone Mitch 0431095365

AGISTMENT

HORSE AGISTMENT AVAILABLE. Full care. Group and individual paddocks with shelters. Full size sand dressage arena, grass jumping arena. Located walking distance to Peats Ridge Village and Café. Call Cameron on 0438695600.

SERVICES AVAILABLE

FARMERS HELPER - HANDYMAN

Experience with gardens, benches, sheds, houses etc, Machinery & truck lic, personal assistance and/or allrounder. Call 0420 415 639, best between 7-8pm.

BRICKLAYING & Render repairs. Adrian 0408347737. Lic 98665C

RURAL FENCING - Post & rail, wire stock, chainwire, colourbond, paling etc. Also Landclearing. Phone Rick 4373 1117

TERMITE DAMAGE BUILDING REPAIRS

Minor to Major structural
Mark 0418112630 - licence 39912
Email: CCtermite@gmail.com

HORSE & LIVESTOCK BURIALS

www.horseburials.com.au
Ph Craig 0411 2888 12

PEATS RIDGE HAIR CUTS MEN - LADIES - CHILDREN

Wed, Thu, Fri 9am-5pm. Sat 8am-1pm
Walk in - no appt necessary Ph 0447436558

FENCING AND SLASHING.

Also: FIREWOOD For Sale. David Starkey. 4374 1192 or Mobile 042 725 7948

OOST Painting Contractors - Lic 71725C

Quality & cleanliness assured.

For a free quote call David 4356 1449 or 0417 234 094. Yarramalong Local

PEST CONTROL - Servicing the local area. A.T.S. Pest Control Services Phone Tony 4373 1157 Mob: 0427 731 157

MISTY MOUNTAIN RURAL CONTRACTORS - Earthworks, Irrigation, all services available Ph 43530990 or 0418221495

ANTENNAS - DIGITAL - Specialists with VAST Satellite Service, extra outlets, boosters. Mobile service 4323 6367 or 0412685555

AIRCONDITIONING, BUILDING, CARPENTRY - Local service, 14yrs experience in aircon, 22yrs experience in building & carpentry. Call Ken 0412 842 920

Laurie Dougllass Plumbing Plumber, Drainer, Gasfitter, Roofer - Ph 4373 1257 Mob 0407 008 488

HORSE RUG REPAIRS - reliable prompt service. Pick-up & drop-off available for large quantities. Ph 0405 620 394

8 TONNE EXCAVATOR FOR HIRE

Tilt hitch, Hydraulic grabs, Auger, Blade, Full range of buckets, Multiple other services available. L & L Kerslake. 43741678 - 0427003721

ALL COVERS & CANVAS WORK!

Boats, Vehicles & Horse floats re-trimmed, cover & horse rug repairs, no job too small! Servicing the mountains & the valleys. Call Alan on 0414 993 669 or Louise on 0410 646 200. located at Yarramalong Road Wyong Creek.

TOWN 'N COUNTRY FLOOR SANDING & POLISHING

New & old floor boards, parquetry, verandahs, stairs, walls ceilings, re-coating, staining & painting etc. free quote ph Stuart 0400076261

WATER BORES

Local drilling company
based at Ourimbah

Contact: Paul Slade

Ph/Txt: 0408 471247

email:

Sladedrill@bigpond.com

PRINTING SERVICES

Lynwood Press

Your local printing service



✧ Flyers

✧ Business Cards

✧ Booklets

✧ Stationery

✧ Labels

✧ Duplicate Books

✧ **Banners, Signs & Displays**

All Types of Printing
Design Service, Scanning,
Colour Copying up to A3



Ph/Fax: 4374 1039 Mob: 0412 669 649
Email: enquiries@cnews1.com.au

Publishers of the "Community News"

Contractors Licence No: 367849C

WATERMAN EXCAVATIONS PH: 0438 617 851

Mulching Horse Arenas Certified Fill

Admin@Watermanexcavations.com.au
www.watermanexcavations.com.au

- Excavators - Tipplers - Grader - Dozer - PoziTrack - 6X6 Dump Truck

CROSSROADS AUTOMOTIVES

Terry Kyriacou

Mon - Fri: 7:30am - 5:00pm

Saturday: 7:30am - 12:00pm

SPARE PARTS

LOG BOOK SERVICES

MECHANICAL REPAIRS

Ph: 4373 1774



Cnr of Wisemans Ferry Rd. & George Downes Drive, Central Mangrove

AUTHORISED INSPECTION STATION (INCL LPG)

MLS MOUNTAIN LANDSCAPE SUPPLIES

SANDS SOILS MULCHES WOOD-CHIPS GRAVELS PEBBLES
PLANT NURSERY - GIFTS - FIREWOOD

DELIVERY AVAILABLE 6 DAYS A WEEK

PH: 4376 1055

988 George Downes Drive Kulnura
mls@live.com.au



• AGRICULTURE • INDUSTRIAL • DOMESTIC

Licence No - 269888C

24 HOUR EMERGENCY CALLOUT SERVICE

Ph: 4322 3333

Fax: 43223433

Email: sales@girrigation.com.au

Web: www.girrigation.com.au

Unit 2 254 Manns Road, West Gosford NSW 2250



K&T PROPERTY CONSULTANTS PTY LTD

Real Estate Valuers & Land Economists

ROBERT MEGGS FAPI CPV

providing independent property valuation advice, including:-

- Stamp Duty, CGT, GST & Retrospective Valuations
- Probate & Estate Valuations • Insurance Valuations
- Valuations for Family Law • Pre-Sale/Auction Advice
- Land Value & Compulsory Acquisition Valuations

500 Kyola Road
KULNURA NSW 2250

Email: ktpropty@ozemail.com.au

Telephone (02) 4376 1451

Facsimilie (02) 4376 1452

Mobile 0429 44 33 10

Misty Mountain Rural Property Development Services



- agricultural consultants
- pasture improvement
- fertilizer spreading
- weed spraying
- all tractor work 4/2WD
- soil conditioning
- irrigation install/design
- fencing & stables
- crop planning & planting & all excavations
- concrete slabs Lic. R94321
- property evaluation & planning & management
- fork lift hire

Ex-Dept. Agriculture Officer with 45 years
experience in the local district.

Greg Koutoulas is the man to call on 0418 221 495



Stop Water Shop

Authorised Dealer

**ONGA, DAVEY and
GRUNDFOS PUMPS**



K. W. & M. E. WEST Pty. Ltd.

1650 Wisemans Ferry Road,
Central Mangrove

Phone 4373 1164 Fax 4373 1049

PUMP REPAIRS AND SERVICE

Trading Hours

Mon - Fri

7.30 am - 5 pm

Sat 7.30 am - 12 noon

Closed Public Holidays