

COMMUNITY NEWS

No. 907 Ph: 4374 1039 Mo: 0412 669 649 Email: enquiries@cnews1.com.au Web: cnews1.com.au 16th September 2022



HERE COMES THE COUNTRY FAIR Saturday 15th October 9am to 3pm

Yahoo! We have done it. At last it's on again. We have waited 3 years and now it's just a month till the Country Fair. Lots of new and exciting events and acts have been organised to celebrate the return of our favourite day of the year. There are a great variety of stalls, activities, rides, animals and entertainment confirmed, including some old favourites too.

Sorry the schedule is a bit late but rest assured whatever you have

created, we will find you a category to enter it in.

We would love some more volunteers to help in the Hall on Friday 14th October (any time 8am till late) organising entries. The question is not: Will we enter? But: What will we enter?

Thank you very much to all the local groups who are organising their stalls, and to the many people donating goods and time. More volunteers are still needed and very welcome.

Remember:

Do bring your cash with you, our stalls don't have card facilities.

Use the plenty of hand sanitizers on the day.

No dogs please.

Everything starts an hour earlier.

This year's Country Fair can't come soon enough. It will be so good to have it back. A great time to catch up with everyone on the mountain.

Sue Douglas



Yarramalong School Community Centre Inc.

ANNUAL GENERAL MEETING

The 2022 Annual General Meeting of the Yarramalong School Community Centre Inc was to have been held on 18/9/2022 but has been postponed to a date to be advised.

*Libby Keating,
Secretary*

EMERGENCY ANIMAL DISEASE INFORMATION SESSIONS

The risk of Foot and Mouth Disease (FMD) and Lumpy Skin Disease (LSD) is high as these diseases have recently been reported in countries close to our international borders.

All livestock owners should know what these diseases look like and know how to check their animals regularly.

Greater Sydney Local Land Services is running a series of information sessions on FMD, LSD and other emergency animal diseases. The presentations will be relevant to all landholders, livestock owners, livestock transporters, stock and station agents and saleyard staff.

- Kariong at 10.00am to 11.30am on 20 September,
- Mardi at 2.30pm to 4.00pm on 20 September,
- Hawkesbury region workshops are currently being finalised.

For information and to register go to <https://www.lls.nsw.gov.au/regions/greater-sydney/events>

For the latest information on FMD and LSD, click [HERE](#).

If you suspect FMD or LSD, immediately contact your Local Land Services district vet on 1300 795 299 or the Emergency Animal Disease Watch Hotline on 1800 675 888.

*Greater Sydney
Local Land Services*

The world is a dangerous place to live; not because of the people who are evil, but because of the people who don't do anything about it.

Albert Einstein

STOP !

Next issue Published
7th October 2022

**** DEADLINE ****

**** 30th September '22 ****

Send adverts & copy by
email, website or post.
Email, website, FB or
phone for enquiries

Central Coast Council to Attend Spencer Community Information Meeting

Council is looking forward to an upcoming community information meeting with Spencer residents on 24 September to discuss and answer questions regarding dam outflows, and to give an overview of the management of the Mangrove Creek Dam, particularly in light of the extreme wet weather the area has received this year – resulting in the Dam reaching a record breaking high during July.

The unprecedented wet weather saw the storage level in Mangrove Creek Dam increase from 90.5% to 100% following more than 400mm of rainfall across five days.

This is the first time Mangrove Creek Dam has reached full capacity since construction was completed in



July 2022 - Mangrove Creek Dam spillway sees it's first overflow

1982.

Outflows through the Mangrove Creek Dam spillway have now ceased and the Dam remains at 100% of capacity. Council continues to monitor the Dam as part of its usual program.

The Dubbo Gully area south of Mangrove Creek Dam has now reopened to the public for passive recreation, however Council requests that all users take care while in this area, as flood damage to access tracks

is still evident.

The community information meeting on Saturday 24 September 2022 will be held at 9:30am at the Spencer Community Hall. Council staff, including Council's Administrator Rik Hart, will be in attendance.

Sue Davies
Media/Communications
Strategic Communications and
Engagement
Central Coast Council

Sustainable Natives
(wholesale production nursery)
94 Keightley Avenue, Somersby - Sales by appointment.
Contact Jonathan Steeds on 0415465162
jonathan@sustainablenatives.com.au
or Olga@sustainablenatives.com.au
web: www.sustainablenatives.com.au

We produce a large range of Australian Natives including local species. We supply retail nurseries, landscapers, bush regeneration projects, developers and local property owners with tubestock to semi advanced plants.
We offer a design (landscape architecture drawings)/consultation service for your property to add more natives to your landscape.

ALL-MAV
AG SPARES

For all your
Agricultural Machinery Spare Parts

Call Monica: 0439829134
allmavagspares@hotmail.com
www.all-mavagspares.com.au
Peats Ridge

MANGROVE MOUNTAIN PHARMACY

Monday – Friday: 9am-7pm
Saturday: 9am-3pm Sunday: Closed

Free Flu Vaccine
Now Available
No Bookings Required

- Free webster packing and all your pharmacy needs
- Household goods and gifts
- Milk, cold drinks
- Parcel point outlet

3/1 Waratah Road, Mangrove Mountain, NSW 2250
Phone: (02) 4374 1457 Fax: (02) 4374 1479
Email: mangrovetmtparmacy@gmail.com

Blues and Roots Revival

Blues and Roots Revival is back! Featuring an amazing lineup of acts for a great day of live music for the whole family on Saturday the 24th of September at the picturesque Dooralong recreation reserve.

The event features an award winning lineup of Blues and Roots music, headlined by Australian Blues Music legend, Ray Beadle and his all star Band, plus Blues on the Mountain favourites, the multi award winning PJ O'Brien Band with special guest, Danny Tsun and making her Blues on the Mountain debut, Blues and Roots starlet, Piper Butcher (2022 winner Album of the Year, Song of the Year and Female Artist of the Year – WNOTS awards)

Great food and light refreshments will be available for purchase on the day, or byo welcome.

Gates open at 2pm, with live music from 3pm till 9pm close.

Blues and Roots Revival is a family friendly, All Ages event. Limited tickets are available and pre booking is recommended to avoid disappointment. To book visit www.trybooking.com/CAOCO

*Note, Blues and Roots Revival is an all weather event, in the event of wet weather the event will move indoors to Mangrove Mountain Hall.

Ryan Howard



MANGROVE MOUNTAIN COUNTRY FAIR 2022 CONTEMPORARY ART PRIZE

Our Country Fair will be held on Saturday, 15th October

The theme for this year's Contemporary Art Prize is:-

“HEAL”

Entries can be any medium and we encourage diversity. Our sculptural entries have been very interesting. I look forward to our first digital or film responses!

Please include a brief description of your work explaining its link to the theme.

Please contact me for further information.

Entry is free and the winner will receive a cash prize of \$200 in addition to the honour of the award.

Entries from artists over 16 years of age can be delivered to the Mangrove Mountain hall on:

- Thursday, 13th October between 3pm and 5pm or



OUR SERVICES INCLUDE:

Custom built homes • Granny flats
Extensions • Carpentry services
Renovations • Decks & Pergolas
Waterproofing & Bathroom renovations
Disabled modifications
Asbestos removal
Building maintenance

Dane Meredith | Builder

0243513200

0420906499

dane@ebhbuilding.com.au

- Friday, 14th October between 8am and no later than 11am

We hope everyone has lots of other entries too. Other Art and Photography entries should be brought to the Hall by 11am Friday 14th October. All other entries, Adults and Children, in Craft, Cooking, Flowers, Produce and Invention Creation, can be taken to the Mangrove Mountain Hall from 8am to 3pm on Friday 14th October.

Poppe
0400105653

MANGROVE PRODUCE AND HARDWARE

1668 Wisemans Ferry Rd, Central Mangrove (just 1km from the Crossroads)

SPRING IS HERE!

WE HAVE ALL YOUR GARDENING AND PAINTING NEEDS



- ◆ Horse Feed
- ◆ Fertiliser
- ◆ Paint
- ◆ Pet Food
- ◆ Timber
- ◆ Plumbing
- ◆ Bird Seed
- ◆ Hardware
- ◆ Fencing
- ◆ Vet Supplies
- ◆ Hand Tools
- ◆ Electric
- ◆ Chemicals
- ◆ Power Tools
- ◆ Fencing

Mon-Fri: 7:30am -5:00pm
Sat: 8:00am -2:00pm

Ph: 43731259

SHOP ONLINE AT
www.tuckersstore.com.au
or shop.truevalue.com.au

Spencer Community BBQ

On Saturday, 13th August River Cares and the Spencer Community Progress Group collaborated to arrange a community BBQ for the residents of Spencer and Gunderman, to help boost morale, promote community connectivity and emergency preparedness and to have the opportunity to thank all the emergency services who helped us.

This event was supported and funded by the Central Coast Council and represented by the Administrator Rik Hart, Glenn Cannard - Unit Manager, Community and Culture and Breanna Pollock - Community Development

Worker. Also in attendance were the Spencer RFS, SES, Dept of Community and Justice - Welfac, Resilience NSW, Gavin Ashby, Chief Inspector Gosford NSW Police Force and Keith Aranjo, editor of the Mangrove Mountain and Districts newsletter.

The Kariong-Somersby Rotary Club came to the rescue at short notice served 80 hungry people with a total of 120 delicious sausage sandwiches.

The day went without a hitch. The sun shone, there were lots of smiling faces and much laughter which was so good to hear. People on the day had the opportunity to share their harrowing flood experiences or complaints, and were able to talk to Rik, Glenn and Breanna from the Council and to the other emergency service members.

Everyone on the day were entertained by the Spencer musicians from Clay Hill and Cohens Creek, along with

Jacky and Andy from the band Top Cat who travelled from Yattalunga (near Davistown) to be part of this great and highly successful community event.

On the day there was a discussion with the Council's Administrator Rik Hart about the residents concerns regarding the Emergency Dam Procedures for the Mangrove Creek Dam overflows and an overview of the management of this dam to allay the Community's fears. Rik Hart agreed to hold a community forum/information day which will be held on Saturday, 24th September at 9.30am at the Spencer Community Hall. And to support this community meeting the Kariong-Somersby Rotary Club have agreed to come back to serve their delicious sausage sandwiches.

Everyone is welcome.
Kind regards,

*Robyn Downham
President*



SAVE THE MANGROVE MOUNTAIN UNION CHURCH **HOW YOU CAN HELP**

Our goal is to "Work together to keep the Union Church safe in our community, for those who will become our community's future, as intended by those from our community's past"

We welcome your ideas and/or offers of support. Otherwise, you can help in the following ways: -

1. If you would like to contribute financially, donations can be made to the Mangrove Mountain Christian Group Inc at Bendigo Bank, BSB 633-000, A/c 185477965.

2. Join the Mangrove Mountain Christian Group. Joining fee is \$1, annual fees are \$2. Please contact our Secretary on mmcgsecl@gmail.com for an application form.

3. You can also write/email a personal letter to the Liquidator Mr Barry Taylor, Restructuring & Risk Advisory, HLB Mann Judd, Level 19/207 Kent Street, SYDNEY NSW 2000 or by email to: btaylor@hlbnsw.com.au Please be civil and courteous to the Liquidator.

A copy of your correspondence would be appreciated by either email to mmcgsecl@gmail.com or post to MMCG c/-6 Waratah Road, Mangrove Mountain NSW 2250.

*Robert Meggs, President (tel – 4376 1451)
On behalf of the Mangrove Mountain Christian Group Inc.*

Notice of 1080 Program



The NSW National Parks and Wildlife Service (NPWS) is conducting an aerial baiting program in Brisbane Water and Popran National Parks from Saturday 8th to Friday 14th October 2022.

The operation will use 1080 (sodium fluoroacetate) poison for the control of wild dogs and foxes.

The program is designed to minimise predator impacts on wildlife, especially threatened species, and to minimise impact of wild dogs on neighbouring stock.

Signs will be placed at the entry to the baiting location. Domestic pets are not permitted in NSW National Parks managed lands. Pets and working dogs may be affected (1080 is lethal to cats and dogs). Pets and working dogs must be restrained or muzzled in the vicinity and must not enter the baiting location. In the event of accidental poisoning seek immediate veterinary assistance.

Please contact the local Central Coast NPWS area office for more information on (02) 4320 4200.

DEVINE HILL TO FINCH'S LINE WALK

The Dharug and Lower Hawkesbury Historical Society would like to extend the invitation to the general public to join us for a walk on part of the World Heritage listed Old Great North Road on Saturday, 24th September.

We will start by walking up Devines Hill and view the spectacular stone walling, culverts, quarries, buttresses, chiselled and blasted rock faces and hand hewn drains. These structures are all convict built.

This is a great walk with a mixture of historic remnants of the Old Great North Rd and some beautiful views over the Hawkesbury river and other valleys. This walk follows the convict built road and includes a number of information signs along the way that give a good insight into the construction and history of the road making the walk more interesting.

We then plan to make our way partly along Finches Line of Road to an ideal picnic spot to have lunch overlooking the Hawkesbury River and Wisemans Ferry before we make our way back.

St Alban's Village Market

Explore-Discover-Sell

(Gold Coin Entry per Adult goes to Local Community Groups)

from 10am

◆ 8/9 October ◆ 12/13 November ◆
◆ 10/11 December ◆

2 Wharf St. St Albans

www.stalbansvillagemarket.com.au

Date:- Saturday, 24th September 2022

Time:- 9.30am for a 10am start. Car pooling may be required as there is limited parking at the Devines Hill starting point.

Meeting Location:- To meet at the parking area of the Wisemans Ferry Park.

Cost:- \$10 for Members and \$15 for Non-Members (Cash or contactless credit card payment will be available).

This is an easy to medium walk.

Bookings:- It is essential that you book in for this walk. Please contact Jan Kofron on 0405 321 478 and leave a message with your contact details

and the number of participants or email enquiries@dlhhs.org.au by Monday 20th September 2022.

Bring along snacks, water, sunhat, sunscreen & repellent. Sturdy shoes are suggested.

All participants will be required to sign a indemnify form on arrival before participating in the excursion.

Come along to experience the stories of convict life.

All welcome.

Robyn Downham
Publicity Officer
Dharug and Lower Hawkesbury
Historical Society



20 Langford Drive,
KARIONG

4340 5154

Chiropractic Massage
Nutritionist Acupuncture
Counsellor Podiatrist
Hypnotherapy

HICAPS available

Medicare EPC & Workers Comp accepted
After hours appointments available

Like us on social media for
the latest clinic news



**Caring for Kariong & the
Mountain District for over 20yrs.**

Solicitors & Attorneys

Solving legal problems effectively and efficiently for the Coast and Mountain communities for over 20 years

- Conveyancing ■ All insurance claims
- Driving offences ■ Wills and probate
- Council and building disputes

98 Mann Street, Gosford 4322 6666
25 Alison Road, Wyong 4353 1248

NSW Law Society Accredited
Specialist since 1996

CBD LAW
Solicitors & Attorneys



Horse Vet

Somersby - Mangrove
& Central Coast area

Brett Warren

Mobile: 0428 215 599
Home: 4374 1640

Email: brettvet@ozemail.com.au
www.centralcoastequine.com.au

Consultations by appointment

Mobile X-ray, endoscopy, purchase and insurance exams



Soil Pit workshops

Local Land Services and Young Farmers Connect are running four free workshops on 7 and 8 October at Menangle and 11 and 12 November at Somersby to help landholders: Work with soils to inform farm planning, understand the characteristics of their soils, soil sampling, soil fertility and soil management. The workshops will be led by highly experienced Soil Knowledge Network members.

Two main soil types in Greater Sydney

Refer to the information below and register for your selected workshop. You are welcome to discuss which workshop will be most suitable for you with Trish Smith (sydney@youngfarmersconnect.com 0409679433) or Madeleine Florin (madeleine.florin@lls.nsw.gov.au 0427197860).

The Sydney region has two major soil types; sandy soils, which come from sandstone, and clay soils, which come from shales or volcanic rocks. Some farms will have soils that are a mix of the two. The health of a soil is defined by its capacity to function, sustain plant and animal productivity,

and support efficient water and nutrient cycling. The health of the soil is a reflection of its inherent and dynamic properties.

Inherent soil properties change very little or not at all with management. Inherent soil properties form over thousands of years and result primarily from the soil-forming factors: climate, topography, parent material, and time. Examples are soil texture, type of clay, and depth to bedrock.

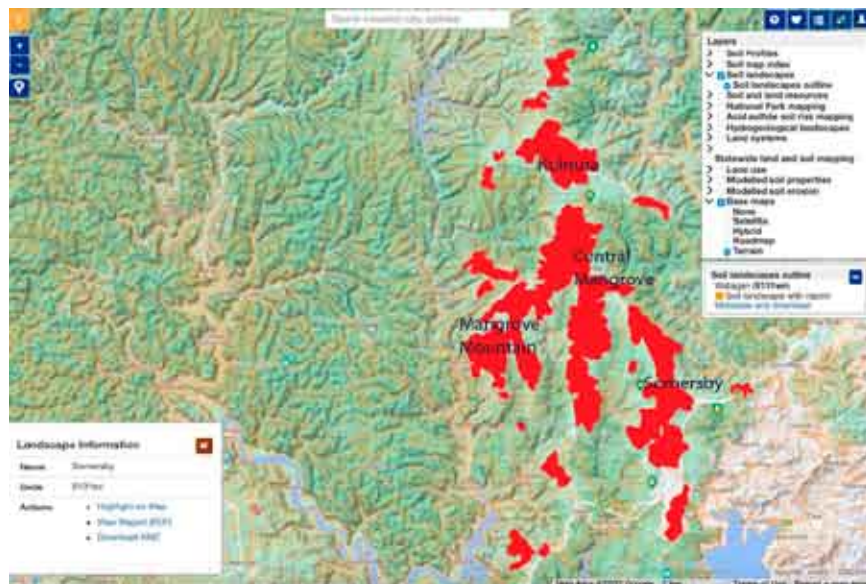
The soil pits on Hawkesbury sandstone-derived soils will dig deeper into the inherent properties of sandy soils derived from sandstone. The soil

pits on the Wianamatta shale-derived soils will dig deeper into the inherent properties of clay soils derived from shales.

Two workshops per soil landscape

The same workshops will be held twice at the Wianamatta Shale site in Menangle (Friday 7 October and Saturday 8 October) and the same workshop will be held twice at the Hawkesbury Sandstone site in Somersby (Friday 11 November and Saturday 12 November).

Both workshops are an opportunity to grow your understanding of the



Darker shading indicates Hawkesbury sandstone-derived soils (Map 1)



P&S WILLIAMS T/A

CENTRAL COAST TRACTORS P/L

Tractor & mower service, repairs & parts
 Parts for all brands
 Tractor accessories
 Implements, blades and spares

Leading brand of Lubricants

Agricultural Supplies, Plumbing & Fittings

Tractor School
 Safety, Operation, Implements & attachments
 Maintenance & servicing

General Engineering
 Modifications & fabrication, Welding










Hardi Jarrett Southern Cross Kanga

Kiotti's parent company, Daedong Industrial Co Ltd, has led the way in developing world-class farming machinery for many decades. Today Kiotti/Daedong products have a secure global market across 60 countries.





DISTRIBUTOR FOR KIOTTI TRACTORS AND MOWERS ON THE CENTRAL COAST

www.centralcoasttractors.com.au

Tel: 4372 1457

enquiries@centralcoasttractors.com.au

Fax: 4372 1495

inherent soil properties on your farm. This knowledge can assist you with making farm management decisions to improve soil health to support increased production and build resilience to drought and significant rain events.

You are welcome to attend either or both soil pit workshops and, regardless of the soils on your farm, both workshops will cover general information that you can apply to different soils.

Your farm's soil landscape

The maps show the distribution of the Hawkesbury sandstone-derived and Wianamatta shale-derived soils across Greater Sydney. If you are in an area that is in red on Map 1, come to a Wianamatta Shale soils workshop. If you are in an area that is red on Map

2 or Map 3, come to a Hawkesbury Sandstone soils workshop. If you are unsure, contact Trish Smith (sydney@youngfarmersconnect.com 0409679433) or Madeleine Florin (madeleine.florin@lls.nsw.gov.au 0427197860).

Register

Registration is essential. Register here: <https://www.lls.nsw.gov.au/regions/greater-sydney/events/gs-events/soil-pit-workshop-somersby-1>

More information

Trish Smith (sydney@youngfarmersconnect.com 0409679433) or Madeleine Florin (madeleine.florin@lls.nsw.gov.au 0427197860).

Young Farmers Connect and Local Land Services

MOBILE MASSAGE



- Massage
- Reiki
- Cupping
- Facials

Book yourself in for a treatment in the comfort of your own home or holiday rental

1 hour \$100*

90 min \$135*

Call 0423 460 583

ambershealingspace.com

*Prices for within 30 minutes of Central Mangrove, facials extra. See website for more details.

FILMOR ELECTRICAL

Lic. No. EC37248

*Commercial, Industrial
Domestic*



24 Hour Service

Phil Moore

Phone: 4372 1200

Mobile — 0407 239 920

ABN 60 003 402 364



SOMERSBY ANIMAL HOSPITAL

Dr. Robin Crisman & the SAH veterinary team
79-b Howes Road, Somersby

- A full service, purpose built veterinary hospital.
- Large and small animal consults incl. horse repro.
- House and farm visits. - Cat boarding available.

Call us on: 4372 1799

www.sahvet.com.au
visit us on Facebook

Dr. S. ANANDASIVAM

(ANAND)

MBBS, FRACGP, AMCC

For Doctor Appointments:
Monday - Friday 9am- 5pm

*Laverty Pathology Service
Available:*

Monday to Friday 8:00 till 3:30
Saturday 8:30 till 12

Medicare Bulk Billing

1639 Nurses Road
Central Mangrove, 2250
02 4373 1914

AUCTION

Wollombi Spring Hobby Farmer's Sale

Saturday 24th Sept 2022
Commencing at 10am

*Selling livestock, machinery,
antiques, and everything
in between*

*** NOW TAKING ENTRIES ***

www.bowelidbury.com.au
Greg Lidbury 0419 498 561
Michael Easey 0428 327 007
Toby Ware 0460 808 902



Bowe & Lidbury Pty Ltd
(02) 4932 7066

Kulnura & District Garden Club

Member Spotlight – September - David Abberton

In previous editions you may have read about our resident comedian, David Abberton, who I finally managed to coax from his garden to pause and answer the questions for this month's member Spotlight. Dave is happiest when he is growing food, and he is always quick to lend a hand for our garden club events, an ear for advice, and loves cooking using produce from his garden.

1. How long have you been a member of KDGC and why did you join?

I joined in April 2021 between COVID lockdowns, so just over a year. I was looking for a way to learn more about gardens, growing things, local knowledge and a thrifty place to swap plants and seeds - KDGC has proven to tick all those boxes and many more!

2. Who or what first sparked your love of gardens / gardening?

My parents and grandparents were all keen gardeners and weekends were always spent doing something in the garden. I always had my own garden patch as far back as I can remember.

3. What do you most like about being part of KDGC?

The friendly people I have met, everyone shares their knowledge, advice, curiosity, and plants. Every month we have our meeting in a different local garden or hall so its a great way to discover the abundance of local garden treasures.

4. What do you enjoy most about gardening / gardens?

There is always something new to learn, you get to eat a lot of fresh, wholesome, nutritious food, it's a form of meditation for me by being 'in the moment', and apparently contact with soil somehow releases 'happy chemicals' in one's brain so there is a euphoric feeling getting dirty in the garden!

5. Who inspires you?

I find so many people inspire me about gardening and growing and farming - including my neighbours, everyone at KDGC, the Permaculture movement (including Ruth Stout, Bill Mollison, David Holmgren), the Regenerative Farming movement (eg Peter Andrews, Allan Savory, Charlie Arnott), people who publish garden knowledge on Youtube, radio, TV, podcasts and books (like Charles Dowling's No Dig gardening, David Trood's Theweedyarden, the Regenerative Journey podcasts by Local Landcare Services... I could go on but I need to get back to my orchard and veggies!).

6. What's a key piece of wisdom you'd share with a new gardener?

Behind every gardening success there are 50 failures, so if something in the garden doesn't work just keep trying and eventually you will succeed. Also I find that any time I'm with other gardeners I learn something new, as there is so much to learn about gardening and nobody knows everything.

7. What have you learned since joining KDGC?

There are so many amazing gardens - private, public, and commercial, around the Central Coast Hinterland and beyond.

8. What's your favourite plant / flower / veggie / herb?

I love all plants, but I get the most joy from growing things that are food. All forms of Basil could be my all-time favourite for the flavour burst and aroma, but there are thousands of other plants I love.

9. What is one thing that you can do / have done that not many people know about?

I lived and worked in South East Asia for a dozen years, which has influenced my way of living including culture, philosophy, and food - for example we grow many different herbs and spices including several types of ginger.

10. If you could write a book, or a song, or make an artwork that represents your life, what would the title be?

Happy man.

Your LOCAL GUY for:

- Fixed 4G Internet
- CCTV,
- WiFi,
- & more.



STARLINK IS HERE
WE ARE NOW INSTALLING
STARLINK INTERNET, AND
VAST TV SATELLITE
SYSTEMS.

CALL ME TO DISCUSS




Master Security License:
101264
Open Cablers License:
55883
Insured PI & PL.
Over 30 years In business.
Techniport Pty Ltd T/A
CLOUD SECURITY
Call WARREN 0407 366 444

WARD Septics

Septic Tank Cleaning

- * New Vaccum Truck that can pump 110 metres away from tank.
- * Plumbers Jetter attached for clearing blockages in sewer pipes.
- * Truck carries water to run Jetter
- * Water Tank Cleaning

*** And Even Cheaper Rates For You With A Neighbour**

Call Paul For More Info

0438 315 514

 **SepticCleaning.com.au**



David loves growing sweet potatoes

We are a friendly and happy bunch, and new members and guests are always welcome.

We meet on the second Monday of each month at 9:30am for a 10am start, our next meeting will be on Monday 12th September at Spencer. For specific location details please contact us.

Please email kulnuradgc@gmail.com for information about meetings, membership, or any other questions, or feel free to call Jacqui on 0455 364 262

Happy gardening!

Karynne Courts
(KDGC Committee member, 2022)

Mangrove/Somersby Greenteam - Landcare & Bird Watching

The next Greenteam session will be held at the Mangrove Mountain Flora Reserve on Friday, 7th October from 9am-12pm.

The plan is to tackle a few weeds followed by a guided flower and bird walk with Kaye and Margaret Pointer (Central Coast Group, Birding NSW) with morning tea afterwards.

The Mangrove Mountain Flora Reserve is situated alongside Wisemans Ferry Road and south of Berecree Road with access from Berecree Road.

To join in on the fun contact Nicole Heta, Project Officer, on habitatforwildlife@cen.org.au

Community Environment Network



Above: Caladenia Orchid; Right: MMtn Flora Reserve

COASTAL TRUCK LICENCES

LR to HC Licences

Paul Viola: 0437 006 060

ABN: 36 659 041 880
info@coastaltrucklicences.com.au
 Coastal Truck Licences

LONGRIDGE CONTRACTING
 EXCAVATION & TRUCK TIPPER HIRE

Services:

- Site Levelling
- Land Clearing
- Horse Arenas
- Roadways
- Certified Fill Material

Machines:

- Excavators / Augers
- Posi Track with Laser Level Grader
- Dozer
- Truck & Trailer Tippers

Michael Schembri
0419 236 788

Follow us

RURAL INSURANCES

If you're in need of assistance with your insurances give Shortland Insurance Brokers a call!

4324 5244
info@shortlandinsurance.com
 Level 2, 27 Dane Drive GOSFORD
 Quote the codeword: "MOUNTAIN" for special offer

CENTRAL COAST
SELECT
PROPERTIES

FOR SALE



Modern Rural Living

7 Bed | 3 Bath | 10 Car | 8 Acres

32 Smiths Road, Somersby

TONY GILMOUR
0400 723 193



KATE KERSLAKE
0427 233 090



P: (02) 4324 8486
E: tgilmour@ccselect.com.au
E: kkerslake@ccselect.com.au

CALL 02 4324 8486
www.ccselect.com.au

CENTRAL COAST
SELECT
PROPERTIES

.:KSR.:.

**NEW
GRAVEL
ROADBASE
\$42/T
DELIVERED**

0411 868 437



**OPEN 7 DAYS
40 YEARS LOCAL**



General Dentistry | Emergency Care | Cosmetic Dentistry
Orthodontics & Invisalign | Dental Implants | Oral Surgery
Sleep Dentistry IV Sedation | Wisdom Teeth Removal
3D CT Scanning | CEREC same-day ceramic restorations

02 4323 1933 | www.vcdental.com.au

Suite 10, 36-40 Victoria Street, East Gosford NSW 2250

NEW PATIENTS

Comprehensive checkup & clean
Includes up to 5 x-rays
No Gap (with health insurance) or **\$290**

OFFERS (all patients)

- Free orthodontic consultation
- Free dental implant consultation
- Free cosmetic makeover consultation
- Sport mouthguards: **No Gap** or **\$99**

FINANCE

- We **bulk bill** the Medicare CDBS
- Zip Pay & Zip Money** payment plans
- We partner with **SuperCare**

Peats Ridge CWA

Our meeting, held on 5th September at the Peats Ridge Community Hall, was opened by our President Margie with the welcoming to Country and then the Motto was said. We had a cake competition of Marble Jaffa Loaf and its a delicious cake. Matters were discussed and dealt with.

Our Country of Study is Latvia which is situated in the Baltic region of Europe and shares borders with Estonia, the Bay of Riga, Russia, Lithuania and Belarus. Major rivers were used by the Vikings as first leg of the Amber Road: a major trade route between the Baltic and the Black Seas. Their Culture is very rich embracing the traditions of their Ancestors including the celebrations surrounding the Winter and Summer Solstices, Midsummer and amazing Song and Dance Festivals.

Our branch member Julianne (pictured) has made a Headdress and it's truly beautiful -- thank you Julianne.

On the 10th October at the Peats Ridge Community Hall will be our AGM and also another cake competition (there will be a good morning tea). Till next time take care,

*Christine Sanfilippo
Publicity Officer*



On The Go Constructions Pty Ltd
Specializing in the building of chicken sheds

Charlie Muscat is well known in the Industry, with over 12 years experience and has a reputation for quality workmanship.

- * New Chicken Sheds * Tunnel Conversions * Roofing
- * Machinery/Farm Sheds/Stables/Lofts/Piggeries * Coolrooms
- * All Fabricating services - All frames & trusses are fabricated by On The Go Constructions to Engineer specifications.

Call Charlie on 4374 1114 or 0408 684 719

VISION FOR LIFE...
For all your concrete & pumping services,
call Louis on 0418 409 576

ALL ASPECTS OF TREE WORK



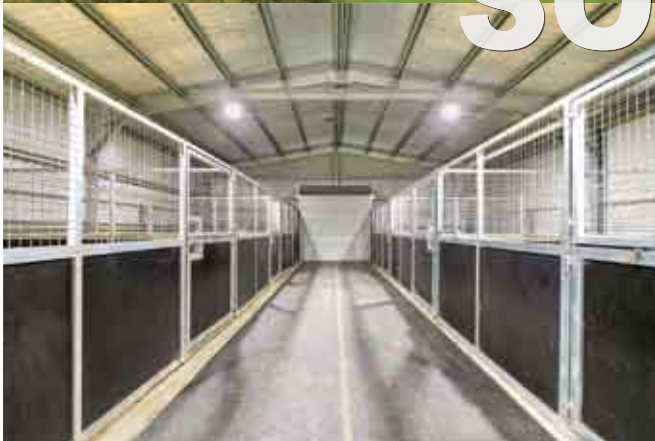
- Truck & Chipper
- Cherry Picker
- Excavators
- Forestry Mowing - maintenance of vegetation including noxious weeds such as lantana and blackberry.

Local Arborist, friendly & experienced team. Insured and certified.

Tim - 0412 985 422 or tijanotreco@gmail.com



SOLD



**Peats Ridge, 1409 Peats Ridge Road,
\$3,340,00**

Your leaders in lifestyle property

Stone Real Estate Wyong. Servicing the Central Coast.

Scott Wall 0413 965 616 **Shaun Coffey** 0417 400 556

stonerealestate.com.au



Mangrove Mountain Yarning Group Creative Recovery in Action!

In response to the 2019/2020 bushfires and hearing feedback from the local community that they felt overwhelmed, unsupported, and in need of a way to get together and connect, Central Coast Council and local residents thought up the idea of a yarning group.

The aim was to create a welcoming space for people to come together at the local Hub Cafe, enjoy a coffee and a cake, have a chat, and do some knitting and crocheting.

It wasn't long before members of the group started to share stories and experiences, and the feelings of fear, grief and loss subsided, and friendship and joy started to emerge. As one member stated, "I come here for the laughter"

Members of the Yarn Hub have been very busy and have completed creative works for The Harvest Festival, Kulnura Primary School and will be decorating a "Healing Tree" at the Mangrove Mountain Country Fair 9am – 3pm Saturday 15th October.

Creative community projects following a disaster can be a powerful platform for people to express their grief, frustration, and loss, as well as their compassion and connection, in turn recovering from the trauma of the disaster and building stronger communities.

As well as the yarn hub, lots of other creative recovery projects have happened including 2 days of creative recovery training, creating sculptures reflecting the local area and a 'love letter to Mangrove Mountain' installation.

Everyone is welcome to join in the fun! Come along to the Yarn Hub at The Hub Café on Mondays from 2pm – 4pm. A photographic mural capturing the beautiful pieces made by the community as well as the "love letter" installation will be on display from Friday 16th September.

For further information please contact Breanna Pollock on 0419 014 446



Presented by Central Coast Council



Australian Government



This is a Bushfire Community Recovery and Resilience Fund project through the joint Commonwealth/State Disaster Recovery Funding Arrangements.

SES Warnings

The NSW SES is moving to the Australian Warning System for flood and tsunami warnings on 30 September 2022.

The Australian Warning System (AWS) is a nationally consistent, three-tiered approach designed to make warnings clearer and lead people to take action ahead of severe weather events. The warning system comprises warning levels, action statements, hazard icons, colours and shapes.

Warning levels & action statements

There are three levels within the AWS - Advice, Watch & Act and Emergency Warning. For each level, there are a series of clear action statements to guide positive action by the community. These include 'stay informed', 'prepare to evacuate' and 'move to higher ground' as shown below:

ADVICE - an incident has started. Stay up to date in case the situation changes.



- Stay informed
- Monitor conditions
- Reduced threat: return with caution

WATCH AND ACT - conditions are changing and you need to start taking action now to protect you and your family.



- Do not enter floodwater
- Prepare to evacuate
- Prepare to isolate
- Avoid the area

EMERGENCY WARNING

the highest level of warning. You may be in danger and need to take action immediately.



- Evacuate now / Evacuate before [time]
- Shelter now
- Move to higher ground

Each warning has three components:

- Location + Hazard
- Action statement
- The warning level

Accessing NSW SES warnings

Impacted communities will continue to receive flood warnings through the NSW SES website, NSW SES social media channels and by listening to local ABC radio stations.

The NSW SES is also developing



NSW RURAL FIRE SERVICE

ARE YOU READY??

It may be wet, but there can still be FIRE!

Free Sausage Sizzle by CCC

GET READY DAY
Saturday 24th September
10:00am – 2:00pm
Spencer RFS Station
4778 Wisemans Ferry Rd, Spencer

Free RFS Activity Packs for Kids

-  Meet your brigade & find out about being a member
-  Pick-up a 'Bush Fire Survival Plan Pack' for your home & loads of other helpful resources
-  Check out our new Fire Truck & take a 'selfie' with the kids
-  Learn about the new changes to the Fire Danger Ratings

The Australian Fire Danger Ratings (AFDRS) levels are:

 MODERATE Plan and prepare	 HIGH Be ready to act
 EXTREME Take action now to protect life and property	 CATASTROPHIC For your survival, leave bushfire risk areas



Are You Ready For The Next Flood??

All Dams are 100% full & the next La Nina is coming!

COMMUNITY FORUM – Flood Risk Mitigation & Management

An update from Central Coast Council (CCC), local MPs, the SES & the Minister for Environment plus Q&A Session for residents

Saturday 24th September – 09:30am

Spencer Community Hall – 4778 Wisemans Ferry Rd, Spencer

04.09.2022

Big Flower



Pots Statues Fountains

Plants Flowers Gifts

24 Burns Road,
Ourimbah 2258
beside M1 Interchange

SUPER NURSERY

02 4362 2236
c.boes@hotmail.com
www.bigflower.com.au

The Biggest Nursery on the Central Coast - 10 Acres!

Open 6 days Tue to Sun 9am till 5pm Closed Mondays

an all-hazards warning platform to provide an additional channel for communities to access important warning information.

For emergency help in flood, storm and tsunami 132 500 For life threatening emergencies call 000.

NSW SES

MILL CREEK WONDERS: A WALKING ADVENTURE

With Heritage Ventures on
Saturday 22nd October 2022

Destination:

Mill Creek & Sandstone plateaus,
Darkinjung Country.

Time:

9.00am - 4.00pm

The tour:

Gathering at the Wombat cafe join our expert guides for morning tea before starting out on a journey of wonder. On the valley floor hear about the Mill Creek tidal mill and the surrounding histories of settlement and resistance during the 1800s. Meandering upslope we pass through

an abundance of Spring flora including the spectacular gymea lilies, banksia, and angophoras, on the way spotting birds and the tracks of mammals.

High on the ridge at the headwaters of Mill and Gunderman creeks we arrive at an extensive plateau showing evidence of deep history. Hear about McCarthy's explorations around Flat Rocks Ridge and other galleries between Gunderman and Mangrove Creek with Paddy Pallin in the 1940s.

Find out more and tickets <https://www.heritageventures.com.au/millcreek>

Subscribe to be the first to know about upcoming events: www.heritageventures.com.au

Or ring Heritage Ventures
0447545271

Bernadette Flynn

BUTTERFLY MAGIC

by Rhonda Hillyer ©

This is the 9th instalment of a serialised publication of the novel "Butterfly Magic"


CHAPER VIII PERSUADING MICHAEL

Crossing the river in the dark proved to be a very difficult task, and the four children slipped into the water a number of times. They were now quite wet and cold from their accidental dips, and the August nights are freezing. They moved quickly, as much to keep the cold away as, to find their way back to reach the tiny hurt creature.


The nocturnal animals were out and about, and an old owl hooted throughout the night letting them know they were not alone. It was fortunate that there was a full moon, which let in long shafts of light through the overhead canopy, and this helped to minimise their spills. Once they reached the other side it became a little easier to make their way along the river bank, and they soon reached the falls where they had been able to see the rocky outreach under them.





As they made their way along the inside of the falls, Michael began to






SHEDS. MADE. TOUGH.
By locals for locals





www.shedsnhomes.com.au Phone: **02 4322 0351**
centralcoast@shedsnhomes.com.au



PEATS RIDGE

AGRICULTURE • COMMERCIAL • RURAL • INDUSTRIAL

Australia's Leading Water Solutions Network

- ◆ Water Treatment
- ◆ Irrigation Systems
- ◆ Mowers & Ride-Ons
- ◆ Fire Protection Systems
- ◆ Water Tanks
- ◆ Pump Systems
- ◆ Fertigation
- ◆ Pipes & Fittings
- ◆ Chainsaws & Generators
- ◆ Repairs

Ph 4373 1466
780 Peats Ridge Road, Peats Ridge

www.thinkwaterpeatsridge.com.au

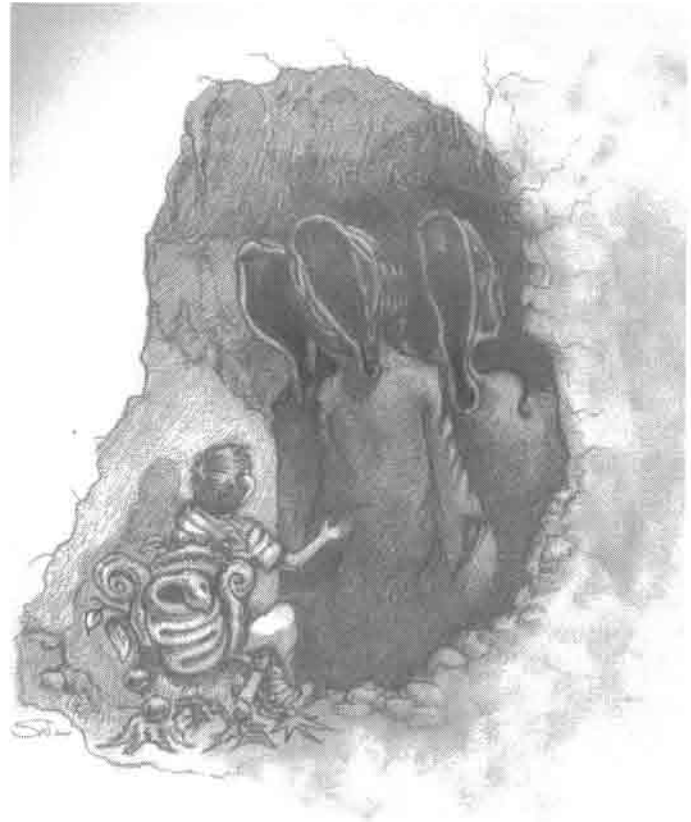
regret his decision to help them. He had escaped his ordeal in the tree, and now he just wanted to get home. Who cared about a stupid butterfly anyway? Suddenly he made a dash to escape his three friends. However, he slipped and fell off the rocks under the falls and into the river below; here the water was deep, and the current was travelling at a furious pace. It was spinning Michael around and around. It was too strong for him, and pulled him further down into the dark depths until everything became black and Michael lost consciousness.

When Michael came to, of course, he wondered where he would find himself but he was not under water. In fact he was quite dry and appeared to be in a large cavern room, which was only dimly lit, but he could see quite clearly. The room was sparsely furnished, and he was sitting on a chair which was facing a rather long, high wooden table which had huge round knobbly legs. Then he noticed that on the other side of the table, sat three large figures dressed in what appeared to be hooded, black robes. He could not make out their faces, however, he could sense that they were very angry.

The hairs on the back of his neck stood on end, and he felt very afraid. They all sat in complete silence for what seemed an eternity. Michael began to shake with fear. He could feel the tears coursing down his cheeks, although no sobbing sounds could be heard coming from him.

Suddenly a booming clap of thunder shook all of the occupants of the room, and Michael fell off his chair and rolled into a ball on the floor. When all was silent a voice spoke; 'Stand up Michael!' It was a command, but not an unkind one. Michael felt a little better and managed to get to his feet, and look at where the voice had come from. There was a figure standing behind him. The voice was a man's and he was wearing a long dark brown hooded robe – his face was obscure. 'I am here to help you as much as I can. You will need to tell this Court what you have done and why you would do such a thing. It is also clear to all that you do not intend to try to make amends. You seem to be unaware that there is anything wrong with inflicting injury on another creature.' Michael was perplexed that they seemed to be referring to the butterfly. 'It was only a butterfly!' He cried out. 'It was a small, beautiful creature that did you no harm. What you did to it was cruel. We all know that you have done cruel things before to small creatures such as birds, lizards, even dogs and cats.' This voice was loud and sharp, and coming from one of the three large figures seated at the table.

'They were pests and should not have been there anyway. Where am I? Who are you?' Michael was getting the courage to fight back now. He turned to the figure behind him, as if he thought he may get some



Persuading Michael

answers from him, but he only motioned to Michael to be silent. 'None of you has the right to keep me here! Take me back to where I was found by you.' retorted Michael.

The large figure in the centre shook his head, 'There is no way we can get through to you. You are a cruel, cold person with no empathy either with animals or even with your own kind. I can see that as you grow older all of your cruel tendencies will also grow. Your acts will become even worse and you will not contribute to a healthy community. It is time for us to act to prevent this from happening.'

'You can do nothing to me' shouted Michael defiantly.

Now the figure behind him spoke softly, 'I am very afraid they can, and if you are not worried now you soon will be for, unless I am wrong, you are going to meet your doom and his name is Wonambee.'

Again the large figure in the centre spoke out. 'You are indeed correct. Wonambee is an animal that survives in the wild and eats other animals but only kills for what he needs to keep himself alive. He does not kill for pleasure or needlessly. You may learn too late to respect other creatures and life itself, but I promise you; YOU WILL LEARN!'

CROSSROADS

CRANES

* Free Quotes *

40t All Terrain Crane
20t Franna, Truck hire

Now serving Mountain Districts & beyond

email: sales@crossroadscranes.com.au
Web.: Crossroadscranes.com.au

Call Alan 0456607501

The Grass Cutters

- Slashing
- Rock picking
- Farm cleaning and clearing
- Cultivation and more
- Obligation-free quotes



Call **0419 412 993**
Email pat@thegrasscuttersrus.com

See us in action at: thegrasscuttersrus.com

Following on from a piece in the last Community News: more Postcards from the Easwells at Somersby.

Alfred Burns died in the Liverpool Asylum for the Infirm and Destitute of bowel cancer in 1913. Occupation listed as stonemason and oven builder.

Richard Burns was discharged from care in November 1908, probably heading for the Central West where he had relatives. In 1909 he was sentenced in Bathurst to 3 months hard labour for uttering a false half crown in Blayney. As a first offender he was discharged to be of good behaviour for 12 months.

He seems to have been of good behaviour from then on. He enlisted in the AIF in 1915, occupation plasterer. Married Mary Watson in 1916, occupation, oven builder and furnace mason, divorced in 1922, and remarried, to Mary Dibley Potter, with whom he remained. Richard enlisted in the CMF in 1942.

Lucetta was discharged from fostering in 1910 and married John James Shaw, a railway employee, in 1912. They had four children.



John and Lucetta Shaw

So I think it fair to say that Eliza Easwell would have been happy to see two of her foster children move on to stable lives. We don't know if they stayed in touch with her.

It is very likely that she knew the fate of a third child she fostered at Somersby, Ernest Stephen Hewitt, as events surrounding his death in 1937 were well publicised.

We don't have any "historic house" pictures of his early family home,

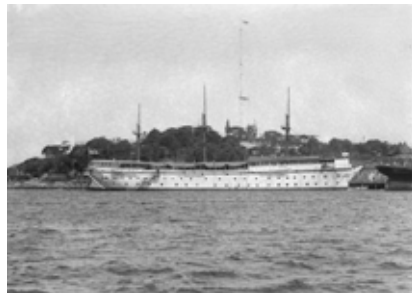
but it was reported in the Sydney Mail October 1891 that Ernest's father "George Hewitt and family lived in a wretched hovel, and were undoubtedly the poorest people within many hundred miles of this place" (Bingera/Bingara). The Crookwell Gazette states that "George Hewitt, a man with seven children, (was) living at Bingara (Gwydir district, N.S.W.), in a half clothed and half-starved condition, and almost without shelter. They lived in the greatest poverty, receiving clothes and food from the townspeople."

Historic but no house. So Ernest certainly had a bad start.

In documents relating to Ernest being taken into care, and subsequently fostered, his father is described as "Miner, drunkard and half witted, has eight children". His mother (Ruth Elizabeth Bullock) as "A prostitute of low type and half witted".

Child "taken for stealing in streets; was in filthy condition (age eight)"

So far not so good. Not the best way to set sail on the voyage of your life, but at least a ship was at hand, The NSS (Nautical School Ship) Sobroan. The next Historic House on our time travel tour. It was to be Ernest's home before being fostered.



Bought by the Colonial Government of NSW in 1891 and fitted out as a reformatory school for delinquent and disadvantaged boys, it was moored alongside Cockatoo Island. The boys

were trained in discipline and trades and skills, to enable them to find good employment.



"Manning the Yards" on the Sobroan, perhaps a skill of limited application for future employment. In 1911 the boys were transferred to the Gosford Farm School for Boys at Mount Penang.

So the boy Ernest had a home on the Mountain before the "Boys Home" housed his shipmates – a fortunate move, as an article in the newspapers in 1897 attest.

Discharged from foster care in 1908, Ernest had to make his way in life somehow. Perhaps he "joined the circus" and worked in Broncho George's Rough Riders troupe. It seems he did make his way back to Bingera. A clue to why he returned to his family's locality is in a note on his fostering documents that records that he is "entitled to £100 in the Bank of NSW and half an acre at Bingera when 21 years".

He was 21 in 1912 when he was named in a court case at Bingara Quarter Sessions brought by the police against Broncho George Looer, accused of forging a cheque in the



Bikes n Motors

Service & Repairs
All Light Vehicles
Cars & Bikes

PH: 0491 622 080

bnm@bikesnmotors.com.au

1154 George Downes Dr, Behind Jerrys'



PTY LTD

DIVERSE

TRADING AUSTRALIA

Resource Recovery | Plant Hire | Site Remediation

Roads | Shed Pads & Sites | Dams | Council Approved Clean Fill

CALL 0408 843 677

admin@diversetradingleustralia.com.au



BRONCHO GEORGE AND HIS MOUNTED HORSE
 Exhibiting 1890 at the Gosford, Market in Queensland.

name of Ernest Stephen Hewitt.

The mystery of how a destitute child in care was entitled to £100 and ½ an acre is solved when we discover that his father was a generous man despite disparaging accounts of his character in the press; irresponsibly generous, at least for a short time.

In 1891 George Hewitt won £9000 on "Lancer" in Tattersall's sweep, within a year he was penniless again, having invested in property, horses etc. "for it is said that he has spent every copper of his winnings. In four months this man appears to have spent £9000 of hard cash. He was well-advised by many, but all to no purpose, for he was too generous. He thought nothing of handing a tramp a £5-note or of paying a man's debts. His friends were many, but they now begin to fall away". (Sydney Mail October 1891) He died in 1912 living on a pension with his son Arthur.

With the widespread syndication of news, it is likely the Easwells read of the case brought against Broncho George.

George Sylvanis Looper, son of a Confederate soldier, was born in Grapevine Texas, arriving in Australia on the Lelandia in 1889.

He left a long trail of trials before the one involving Ernest Hewitt.

In 1812 "George Sylvenas Looper, commonly known as "Broncho George", the proprietor of a buckjumping show, was charged with forgery. The offence was alleged to consist of the filling up of a blank cheque by Looper for £126 15s, which

had been given him by one Ernest Stephen Hewitt, with the intention of having it filled in for £1 15s, which was a loan on an old sulky and harness."

In 1913, as a consequence of matters in the forgery case:

BRONCHO GEORGE —o—
 SHOWMAN UP FOR FALSE
 SWEARING. Looper Left in the
 Loop.

A Tale of an Alleged Trick.

A swarthy middle-aged man, wearing a wealth of hair tucked in neatly around his cranium, named George Silvanus Looper, otherwise Broncho George, first cousin of Texas Jack, was tried before Judge Docker and a jury for having, at Bingara, on September 23 last, made a false statement. (Sydney Truth February 1913)

The trail of Broncho George is an entertaining journey, but for now we will return to the difficult road for Ernest Hewitt, one time resident at Somersby.

The end of the road for Ernest Stephen Hewitt was reached in 1937. It was Unwin's bridge Road St Peters, on a rainy day in April, "When driving five cows from Thornleigh to St. Peters to-day, Ernest Hewitt (44), of Newtown, was fatally injured by a car which, coming in the opposite direction, eluded the cows, but struck Hewitt.

The car driver did not stop. [Advocate (Burnie, Tas.), Friday 16 April 1937]

He suffered a fractured skull, fractured ribs, and probable fractures of his legs and arms and died in Marrickville Hospital.

The driver, Edward Thomas, reportedly a rabbit vendor, claimed the car had been stolen (amongst other implausible and impossible excuses).

Ernest left behind a wife, Cecilia, and a son Stephen Ernest Hewitt aged 8. The story of the death, and subsequent manslaughter trial, was covered in syndicated newspapers around Australia, so it is almost certain

that Eliza Easwell and her daughter Mabel Cohen, would have been aware of what became of the boy that shared their house at Somersby. Perhaps he helped with the clearing and fencing, looked after the poultry and assisted with planting out the orchard.

They possibly bought their trees from Moore's Brush Nursery, poultry from Mrs. Hughes or Myee Poultry Yards.

The following advertisements are from the Gosford Times 1897, as is the announcement of the opening of Burns Markets in Gosford. Perhaps that was where Eliza Easwell made 10 shillings a week from the sale of poultry and fruit.

**FRUIT TREES
 FOR SALE.**
 ORANGE, LEMON, AND
 MANDARIN TREES,
 and all varieties of
SUMMER FRUIT TREES,
 10s per doz. and 3 per 100.
 ADDRESS:
T. MOORE,
 BRUSH NURSERY,
 Narara P.O.

-EGGS FOR SETTING,-
 From my First Prize Andalusians, 5s
 —per setting.—
MINORCAS,
 (Best Strains), 6s per setting.
 13 Eggs to Setting; 10 Chicks
 Guaranteed.
 Inspection invited.
MRS A. HUGHES,
 GOSFORD.

Neil Berecny-Brown

Soul Speak Healing

Your emotions are the window to your soul.

Soul Speak Practitioner
 &
 QHHT Practitioner Level 1
 (intern)

Sharyn Unitt
 Email: shazzaunitt@protonmail.com
 Phone: 02 4376 1014, after 2pm
 Mobile (for sms only): 0408 967 507

CNS Electrical
 Lic No. 214132C

Your local Electrical Contractors on the mountain, specialising in Rural, Domestic, Commercial and Industrial works, including:
 Excavation, Trenching, Mains & Sub-mains, Voltage Calculations & Future Planning.

Call Cameron for a quote on: 0438 695 600
 Office: 02 9157 7646
 Email: admin@cnelectrical.com.au

REGULAR ACTIVITIES & MEETINGS

RURAL FIRE SERVICES

Bucketty RFS	Weekend Training Station Maintenance General Meeting	3rd Sat, 9am-12 pm, breakfast 8.30am Every Thurs as required, generally 10am-1pm 3rd Sat in even months, at 1pm, All welcome buckettyrfs@gmail.com (02) 4998 8130
Calga-Mt. White RFS	General meeting	3rd Monday of the month, 7.30pm at Pacific Hwy Fire Station Mt. White
Kulnura VBFB at Greta Rd Station	General meeting Training	1st Wednesday of the month, 7.30pm 3rd Wednesday of the month 7.00pm
Mangrove Mountain RFS Bloodtree Rd	General Meeting Training / Maintenance	Last Wednesday of the month, 7 pm, All Wednesday's except last of month, 7 pm
Spencer RFS	General Meeting Training Junior Training	2nd Monday of the month Meeting 6.30pm 3rd Monday Maintenance 6:30pm 4th Monday Training 6:30pm E: captain.spencer@ccrfs.org.au Alison Wade 0415 668953. 4778 Wisemans Ferry Rd
Somersby RFS	General Meeting Training/Maintenance	First Wed of the month 7.30pm at the Station Every Wed night 7.30 at the Station (except before Wed general meeting)
Yarramalong RFS	Training: Nights: Morning: Maintenance/Training : General Meeting (GM): Contact:	First Wednesday of month 7pm start Last Saturday of month 8.30am start 3rd Sunday of month 8.30am start 2nd Wed of even months 7.30pm start Ph: 0409 915060 or 0418 280 764 Email: yarramalongrfs@bigpond.com

COMMUNITY & SOCIAL

Coastlink Friendship Group		Wed 9.30am-2pm at the Health Centre, Nurses Rd, Central Mangrove
Country Women's Association (Somersby)		Second Wed of each month, at Somersby Hall Wiseman's Ferry Road, Somersby, contact Sue, 43721280 or 0407768000.
Country Women's Association (Peats Ridge & District)		First Monday of the month at Community Hall, Peats Ridge School. Any enquiries please contact Christine 0419 400163.
Country Women's Association (Mangrove Mountain Evening Branch)		2nd Tues of the month at Mangrove Mtn Hall Start 5pm, meeting 7pm. Ph Judy 43771728
Gosford North Inner Wheel club		2nd Wed each month 7pm at Phillip House in Kariong. Contact: Glenis Ph: 0400 486 760
Gosford World Vision Community Group		4th Tues 11am in Presbyterian Church, West Gosford Contact: Glenis Ph: 0400 586 760. https://permaculturecc.org.au/
Permaculture Central Coast Kulnura & District Garden Club		Second Monday, 9.30 for 10am start. Jacqui Maxwell 0455364262 kulnuradge@gmail.com
Mangrove Mountain & Districts Community Group Meeting		1st Thurs of the Month, 7pm, Mangrove Mtn Hall. Contact: mepeccinc@gmail.com, 0412669649
Mangrove Emergency Planning & Communications Committee		
Mangrove Mountain Country Fair Committee Meeting		2nd Thur of month except Jan, 7:30pm, Mangrove Hall. Pres- Shane 0417 436 529
Mountain Districts Association (MDA)		www.mountaindistrictsassociation.com.au secretary@mountaindistrictsassociation.com.au
Mountain District Football Club Meeting		Second Tuesday of the Month 6.30pm at the Mangrove Memorial Club
River Cares for the Lower Hawkesbury River District		President Robyn Downham 0414248224 Email info@rivercares.com.au
Rotary Club Meeting		Friday 7.15am at Phillip House. 43404529
Spencer Community Progress Group Inc		President Brad Maisey, Community Meetings, 4377 1167, spencercpg2@gmail.com
Spencer Community Ladies Social Club		Last Fri of month. 12.00 noon Spencer Community Centre, Jennifer Dayes 4377 1364 Articles to: spencercpg2@gmail.com
The Mountain Tuesday Social Tennis Group	Newsletter	Tue 9.30am-12.30pm, Kulnura Tennis Courts. Enquiries: Alison Palmer 0427731548.
Somersby Equestrian Club Club & Committee Meeting		Every 2nd month. Check website for further details. www.somersbyequestrianclub.org.au
Wisemans Ferry Community Men's Shed		Tues & Sat, 9am-5pm. Contact: Alan Hunt 4566 4626 or Adrian Acheson 0448 833 781

SPIRITUAL

Anglican Service - Mountain Districts		Every Sun 8am at Peats Ridge Scout Hall, Sunday School during school terms
Mangrove Mountain Christian Group		General Meeting 3rd Monday, 7.30pm at CTC (next door to Mangrove Hall)
Mangrove Mountain Union Church, Christian Service		9.30am second and fourth Sundays. cnr Bloodtree Rd & Wisemans Ferry Rd
St Barnabas Non-denominational Service Yarramalong		3rd Sunday each month, 11.00am. (Easter & (Christmas Carols dates to be advised)
Serbian Orthodox		2nd & 4th Sun. of the month. 10 am, followed by luncheon, tea, coffee, cakes (cost \$20). 1184 Peats Ridge Rd, Peats Ridge
Kariong Community Baptist Church		Sun @9.30am, Church & Kid's Program, Kariong Public School Hall, Chris Clarke email revcr@hotmail.com

(cont'd next page)

POTENTIAL LANDFILL EXPANSION THREATENS CRUCIAL WATERWAYS

The community in the Mangrove Mountain have long opposed the proposed extension of the local landfill site over grave concerns for the impacts on the local environment and waterways.

A legal challenge is being mounted after the Land and Environment Court allowed Verde Terra, the company behind this expansion, to allow increased waste dumping at the facility. With the Kulnura-Mangrove Mountain aquifer as well as Ourimbah Creek nearby, locals hope that any potential legal challenge to this decision will stop the environmental damage being done.

Central Coast Council must do all it can in the Land and Environment Court to stop any further expansion of the Mangrove Mountain landfill site. Historic failures in site management and protection of our waterways leave the Coast at risk, and Council is now holds the responsibility of past failures in their hands.

Local resident Carol Zouroudis wants the Environmental Protection Agency (EPA) and Central Coast Council to liaise with each other to ensure that the significant environmental risks are eliminated.

"There is obviously a risk to the aquifer, and this is simply unacceptable as the groundwater from here plays a key role in sustaining water flows that go into our water catchments.

"Already, the local creek is a site of run-off from the waste facility whenever there is a storm, so expanding it will just increase this occurring."

Member for Gosford, Liesl Tesch, recognises the dangers of this expansion to the local wildlife and industries that rely on a clean source of water.

"We are still waiting on test results for pollutants that may be present in the local waterways. It is reckless to allow this expansion once we consider the impacts this will have on our native wildlife and local farms that are the backbone of the area, and our community is understandably anxious of the risks posed.

"These farms and industries need our waterways to remain pristine. They produce an abundance of produce such as eggs, fruits, vegetables and even bottled water, as well as providing an important source of tourist activity.

"Originally, 240,000 cubic metres were allocated to fill at the landfill

WISEMANS FERRY ROAD CLOSURES

Road rehabilitation works have commenced on Wisemans Ferry Road which is expected to impact residents and motorists for approximately six weeks.

There will be ongoing remediation works being undertaken between Spencer and Wisemans Ferry, which will impact communities and residents.

Council is carrying out these works as a priority with an anticipated timeframe of 4-6 weeks, subject to favourable weather and any other priorities that may arise in the area.

Council has currently received \$1.6m from the NSW Disaster Assistance Arrangements to conduct Immediate Restoration Works on Wiseman Ferry Road, and several other locations across the coast.

*Central Coast Council
Media Release*

back in 1998. Now we are seeing beyond 1.14 million cubic metres allowed which is simply outrageous and too risky for an area that is in proximity to water catchment areas.”

In the meantime, alongside Ms Tesch, residents such as Ms Zouroudis are putting pressure on government agencies and Council to stop the expansion as well as to provide clear information on the extent of pollution already present in some waterways.

“The EPA continues to let the people of the Central Coast down, with the results of urgent water quality tests conducted during the flood events earlier this year still not complete.

How can locals trust the EPA will intervene to protect our waterways in a timely manner if we are still waiting on the result? This community needs to be informed and heard. These concerns impact all of the Central Coast,” Ms Zouroudis says.

Liesl Tesch MP, Member for Gosford

REGULAR ACTIVITIES & MEETINGS (cont'd)

Divine Retreat Centre (Ph 04 6848 6782)
160 Hensons Road, Somersby
www.divineretreatcentre.org.au

Catholic Service -Spencer

- Wollombi

- Somersby

- Yarramalong

YOUTH

Junior Girl Guides 5-10

Girl Guides 10-15

Scouts, Cubs & Venturers
Peats Ridge Scout Hall

Mangrove Mountain Playgroup

HISTORICAL

Brisbane Waters Historical Society

Dharug & Lower Hawkesbury
Historical Society Inc.

First Fleeters Central Coast Chapter

The Pearl Beach Aboriginal History Group

Wyong District Museum &
Historical Society

ACTIVITY/HOBBY

Central Coast GNU/Linux Users Group
Coastal Communicators Toastmasters

Craft/scrapbooking

HALL BOOKINGS

Kulnura Hall

Mangrove Mountain Hall
Somersby Hall and Mountain Districts
Culture and Heritage Centre
Yarramalong school of Arts / Hall

Daily Holy Mass 8.00am to 8.30 am
1st Fri, 5:30pm-8:30pm Divine Mercy Friday
1st Sat, 5.30pm-9:00pm, Divine Youth
Ministry, Young Adults (18-35yrs)
Last Sun, 9am-4pm, One Day Retreat

Holy Trinity Church, 2nd Sat of the month
4pm, Contact 43771374 or 43771168 as times
may change each month.

2nd & 5th Sunday of the month, 4.30pm Mass
at St Michael the Archangel, Wollombi.
Every Sat. evening vigil – 5.30pm St. Francis
of Assisi Centre, 30 Lutana Rd, Somersby.
1st Sunday each month, 11.15am St. Barnabas
All welcome. Enq 0428 438577

Kooree Guide Cabin, every Monday in school
term, 5.00pm – 6.30pm
Kooree Guide Cabin, every Monday in school
term, 6.00pm-7.30pm

Cubs meet 6.30pm – 8.30pm Wednesdays
Scouts meet 7.00pm – 9.00pm Tuesdays
Venturers meet 7.00pm – 9.00pm Mondays
Contact 0460 696 941

Every Tues (except school holidays) 9am to
11.30am, Kooree Guide Cabin. Bec G, PH:
0421 996 029 Anne, PH: 0412 526 557
Email: becgilmour@gmail.com

25-27 Henry Kendall St., West Gosford, Ph:
4325 2270. www.henrykendallcottage.org.au

Last Sat of month. All welcome, contact Jan
Kofron 0405321478 jankofron@optusnet.com.au

2nd Sat of the month, 10.00am for 10.30,
Point Clare Hall (except Jan & Dec). Contact
Jon 43116254 and Gavin 43404435.

3rd Fri of month 7.30pm Pearl Beach. Peggy
0411754577 pbaboriginalhistory@gmail.com

Open Sun to Thurs, 10am-2pm, other times
by appt. Contact 43521886 email info@alisonhomestead.com.au
website: www.alisonhomestead.com.au

www.cclug.org.au - all most welcome

1st & 3rd Thurs of month, 6:45pm to 8:45pm
at Doyalson-Wyee RSL. Debbie 0421216952
Yarramalong Hall 4th Sun. of the month 10am
to 5.00pm cost \$12 per person ph 43561196

Hall bookings contact Annette Stackman
43561196 Committee mtg 3rd Thurs 7:00pm
at Hall- Open to all from community.

Hall bookings Ryan Howard 0405416289

Hall bookings: 0413 359 655
or AH 4373 1488

David Gillett 0416 097192
enquiries@yarramalonghall.org.au
<https://yarramalonghall.org.au>

REMINDERS FOR YOUR DIARY

Spencer Community Information Meeting

Saturday 24 September 2022, 9:30am at the
Spencer Community Hall.

Mangrove Mountain & Districts
Country Fair

Saturday Oct 15th, 9am – 3pm, at Mangrove
Hall and Mangrove Mtn Recreation Reserve
on Saturday 22nd October 2022. Find out
more & tickets <https://www.heritageventures.com.au/millcreek> or ring 0447545271

Heritage Ventures - Mill Creek Wonders

Antennas - Digital

Hayward Video & Antenna Service

VAST Satellite Service
"Government approved installer"

Phone Ray Hayward

Mob: 0412 685 555

20 Sierra Crescent, Gosford East
Email: rayhay@bigpond.net.au



LIC# 227507C

ELLIS

ELECTRICAL SERVICES PTY LTD

0411 317 506

Commercial | Residential | Industrial

Government's Broken Promises for Wisemans Ferry Road

Wisemans Ferry Road serves as an important regional route connecting the communities throughout the Mangrove Mountain region. Following severe weather events throughout February, March, and July, the road has been significantly damaged, leaving the community concerned and uncertain about when the major road will be fixed.

The road was earmarked to be classified as a state road as part of a Liberals and Nationals 2019 election commitment to transfer 15,000 km of roads to help cash-strapped councils.

So far, zero roads have been transferred, including Wisemans Ferry Road.

Liesl Tesch, Member for Gosford, says this is another failure by the Perrottet Government that continues to leave regional communities underfunded and forgotten.

“Wisemans Ferry Road is the artery of the Mangrove Mountain community. Leaving it to our under-resourced Council to repair after a series of significant weather events has pummeled the Coast is outrageous.

“Our community needs this road to be safe to travel. It is simply dangerous to leave it in the state that it is in after multiple landslips, embankment

failures, and widespread pavement damage.”

Council has commenced immediate remediation works to improve the road conditions, though the long-term maintenance and improvements for the major road remains in question.

Ms Tesch strongly encourages the Government to not sit on their hands and to do something now before the current conditions of the road further endanger motorist's safety.

“I am committed to working with State Government, the Central Coast Council, and the broader community to ensure that this road is appropriately repaired and can be adopted as a state road. This will ensure that it receives the proper funding needed and get the community moving safely again.”

*From the Office of Liesl Tesch MP
Member for Gosford*



**Kulnura Computers
Supplies & Services**
4373 1237

- ❖ Custom Built Computer Systems for the Home - Office - Extreme Gaming
- ❖ Computer Repairs - Virus removal
- ❖ Upgrades
- ❖ Software - Accessories
- ❖ Electronic components

Southern Diesel Services
ROAD, CIVIL AND AGRICULTURAL REPAIRS
Workshop / Mobile 24 HRS
Mangrove Mountain

Engine Control Units, Engines, Gearboxes,
General Maintenance, Hydraulics

Mitchell Crane
PH: 0431 095 365



Complete Building Repairs

- general carpentry
- structural rectifications
- excavation

**CENTRAL COAST
TERMITE REPAIRS**
Licence 39912

call 0418 112 630

Peats Ridge
AUTO ELECTRICS
Stephen Andrews Lic. No.: MVRL22840

35 Years of Local Experience

- All Electrical Repairs
- Starter Motors & Alternators
- Lighting, LED
- Electric Brake Controls
- Dual Batteries
- Cars, Trucks 4WD, SUV
- Agricultural Machinery
- Marine Caravans
- Golf Carts • Horse Floats

Plus an extensive range of parts and accessories in stock

We stock quality **Century Batteries** made in Australia for local conditions

All your battery needs at very competitive prices

Ph: 4373 1137
1160 Peats Ridge Rd, Peats Ridge 2250

OUTLAND Mechanical & Maintenance Service
Licence No. MVRL54125 ABN 14814837840

Mobile Diesel Mechanic

- Specialising in Small Fleet Diesel Service
- Tractors • Farm Machinery • Mowers
- Earthmoving Machinery
- Welding

John: 0427 660 752 jlhellyer67@gmail.com

CLASSIFIED ADVERTISEMENTS

These columns will be set aside each issue for residents to advertise inexpensively and effectively in their own local paper. If you have anything you wish to sell, buy, swap, etc., ring 4374 1039 or 0412 669 649 during office hours. Rates start at \$4.00.

POSITIONS AVAILABLE

POULTRY TRAINEE ASSISTANT
MANAGER – FULL TIME

A large-scale broiler poultry farm has a job opportunity. Previous poultry experience preferred but not essential. Key responsibilities in raising poultry, general Maintenance, Machinery operation, Cleanout and set up of sheds.

Must be able to work in a team environment and individually. Accommodation provided as part of salary package on premises -PEATS RIDGE. Please call 0408 843 677

GARDENER/FARM HAND - Farm in Yarramalong Valley looking for a permanent part time Gardener/Farm Hand. Experience in gardening and some farm work . Three days a week Tues/Wed/Thurs at \$30 a hour.

Enquiries please contact Brad 43561748.

WATERMANS EXCAVATIONS is seeking a highly experienced and motivated excavator/machine operator to join our growing team.

Our requirements are as follows:

- Minimum of 5 years' experience and related certifications.
- A HR license
- Ability to work overtime, when required
- Able to work independently and meet deadlines.

To apply for this position, please email a copy of your resume to admin@watermansexcavations.com.au or call on 0431956445

AGISTMENT

HORSE AGISTMENT AVAILABLE. Full care. Group and individual paddocks with shelters. Full size sand dressage arena, grass jumping arena. Located walking distance to Peats Ridge Village and Café. Call Cameron on 0438695600.

FOR SALE

GALE'S CITRUS - Bagged Citrus trees in various sizes available ph. 4372 1408 or mobile 0421 196 631

MULCH for sale. 10m³ Minimum - \$400.00. Delivery if applicable. David 0418 233595

DRAINAGE MATERIAL, certified crushed roof tiles. Delivery Charge only. Please phone 0438731015.

SERVICES AVAILABLE

RURAL FENCING - Post & rail, wire stock, chainwire, colourbond, paling etc. Also Landclearing. Phone Rick 4373 1117

TERMITE DAMAGE BUILDING REPAIRS

Minor to Major structural
Mark 0418112630 - licence 39912
Email: CCTermite@gmail.com

HORSE & LIVESTOCK BURIALS

www.horseburials.com.au
Ph Craig 0411 2888 12

PEATS RIDGE HAIR CUTS MEN - LADIES - CHILDREN

Wed, Thu, Fri 9am-5pm Sat 8am-1pm
Walk in - no appt necessary Ph 0447436558

FENCING AND SLASHING.

Also: FIREWOOD For Sale. David Starkey.
4374 1192 or Mobile 042 725 7948

OOST Painting Contractors - Lic 71725C
Quality & cleanliness assured.

For a free quote call David 4356 1449 or
0417 234 094. Yarramalong Local

**PEST CONTROL - Servicing the local
area. A.T.S. Pest Control Services Phone
Tony 4373 1157 Mob: 0427 731 157**

MISTY MOUNTAIN RURAL
CONTRACTORS - Earthworks, Irrigation,
all services available Ph 43530990 or
0418221495

ANTENNAS - DIGITAL - Specialists with
VAST Satellite Service, extra outlets, boosters.
Mobile service 4323 6367 or 0412685555

AIRCONDITIONING, BUILDING,
CARPENTRY - Local service, 14yrs experience
in aircon, 22yrs experience in building &
carpentry. Call Ken 0412 842 920

Laurie DOUGLASS PLUMBING
Plumber, Drainer, Gasfitter, Roofer -
Ph 4373 1257 Mob 0407 008 488

HORSE RUG REPAIRS - reliable prompt
service. Pick-up & drop-off available for large
quantities. Ph 0405 620 394

8 TONNE EXCAVATOR FOR HIRE

Tilt hitch, Hydraulic grabs, Auger, Blade,
Full range of buckets, Multiple other services
available. L & L Kerslake. 43741678 -
0427003721

ALL COVERS & CANVAS WORK!

Boats, Vehicles & Horse floats re-trimmed,
cover & horse rug repairs, no job too small!
Servicing the mountains & the valleys. Call Alan
on 0414 993 669 or Louise on 0410 646 200.
located at Yarramalong Road Wyong Creek.

TOWN 'N COUNTRY FLOOR SANDING & POLISHING

New & old floor boards, parquetry, verandahs,
stairs, walls ceilings, re-coating, staining &
painting etc. free quote ph Stuart 0400076261

WATER BORES

Local drilling company
based at Ourimbah

Contact: Paul Slade
Ph/Txt: 0408 471247

email:
Sladedrill@bigpond.com



Mountain Medicine

Providing the local community with a collaborative
approach to multidisciplinary healthcare.

Dr Christine Wade

B.Med (Hons) FRACGP

Pathology – Douglass Hanly Moir

Wednesday, opening hours 12.00pm – 5:00pm
Ph: 43741942

Torin O' Grady

Podiatry (Foot Care)

**Now Taking Appointments
call 43741252 - non-patients accepted**

40 Niclins Rd, Mangrove Mountain NSW 2250

All Allied Health Professionals are EPC accredited. Medicare rebates are
available if you have a GP Management Plan with Team Care arrangements
Please enquire for more details.

Contractors Licence No: 367849C

WATERMAN EXCAVATIONS PH: 0438 617 851

Mulching Horse Arenas Certified Fill

Admin@Watermanexcavations.com.au
www.watermanexcavations.com.au

- Excavators - Tipplers - Grader - Dozer - PoziTrack - 6X6 Dump Truck

CROSSROADS AUTOMOTIVES

Terry Kyriacou

Mon - Fri: 7:30am - 5:00pm

Saturday: 7:30am - 12:00pm

SPARE PARTS

LOG BOOK SERVICES

MECHANICAL REPAIRS

Ph: 4373 1774



Cnr of Wisemans Ferry Rd. & George Downes Drive, Central Mangrove

AUTHORISED INSPECTION STATION (INCL LPG)

MLS MOUNTAIN LANDSCAPE SUPPLIES

SANDS SOILS MULCHES WOOD-CHIPS GRAVELS PEBBLES
PLANT NURSERY - GIFTS - FIREWOOD

DELIVERY AVAILABLE 6 DAYS A WEEK

PH: 4376 1055

988 George Downes Drive Kulnura
mls@live.com.au



• AGRICULTURE • INDUSTRIAL • DOMESTIC

Licence No - 269888C

24 HOUR EMERGENCY CALLOUT SERVICE

Ph: 4322 3333

Fax: 43223433

Email: sales@girrigation.com.au

Web: www.girrigation.com.au

Unit 2 254 Manns Road, West Gosford NSW 2250



K&T PROPERTY CONSULTANTS PTY LTD

Real Estate Valuers & Land Economists

ROBERT MEGGS FAPI CPV

providing independent property valuation advice, including:-

- Stamp Duty, CGT, GST & Retrospective Valuations
- Probate & Estate Valuations • Insurance Valuations
- Valuations for Family Law • Pre-Sale/Auction Advice
- Land Value & Compulsory Acquisition Valuations

500 Kyola Road
KULNURA NSW 2250

Email: ktpropty@ozemail.com.au

Telephone (02) 4376 1451

Facsimilie (02) 4376 1452

Mobile 0429 44 33 10

Misty Mountain Rural Property Development Services



- agricultural consultants
- pasture improvement
- fertilizer spreading
- weed spraying
- all tractor work 4/2WD
- soil conditioning
- irrigation install/design
- fencing & stables
- crop planning & planting & all excavations
- concrete slabs Lic. R94321
- property evaluation & planning & management
- fork lift hire

Ex-Dept. Agriculture Officer with 45 years
experience in the local district.

Greg Koutoulas is the man to call on 0418 221 495



Stop Water Shop

Authorised Dealer

ONGA, DAVEY and
GRUNDFOS PUMPS



K. W. & M. E. WEST Pty. Ltd.

1650 Wisemans Ferry Road,
Central Mangrove

Phone 4373 1164 Fax 4373 1049

PUMP REPAIRS AND SERVICE

Trading Hours

Mon - Fri

7.30 am - 5 pm

Sat 7.30 am - 12 noon

Closed Public Holidays