

COMMUNITY NEWS

No. 900 Ph: 4374 1039 Mo: 0412 669 649 Email: enquiries@cnews1.com.au Web: cnews1.com.au 3rd June 2022

Further drain on ratepayer's as IPART approves water price hikes

The IPART increase is less than the amount requested by Council.

The Independent Pricing and Regulatory Tribunal (IPART) has released its final determination on water, sewerage and stormwater drainage pricing for the Central Coast, returning rates to levels that can see Council better maintain its vast water and sewer operations.

IPART announced it would stagger the rate changes from 1 July 2022 – 30 June 2026 to allow customers more time to manage the impacts on their bills, which was requested within community feedback during consultation.

The pricing determination will see the combined yearly bill for a typical household increase by the following increments, plus inflation:

- 17% on 1 July 2022 (\$183 increase)
- 6% in 2023-24 (\$80 increase)
- 8% in 2024-25 (\$106 increase)
- 1% in 2025-26 (\$9 increase)

Stormwater prices will increase once only

IPART stated "Stormwater prices will increase by 20% (\$22) [for a low impact property] in 2022-23, with no further increase apart from inflation. This is substantially less than CCC Water's proposed 73% increase,

mainly because we have not accepted its proposal to transfer \$15.5 million in stormwater costs currently funded through local government rates to the Water Supply Authority.

We also intend this pricing review will be the last time we set stormwater prices. We consider all costs for stormwater services should be fully funded by local government rates from 1 July 2026.

In our view, these services provide benefits to the whole community – not just specific customers. CCC Water stated it has a council resolution to effect this by 2026."

Council Director Water and Sewer, Jamie Loader said the rate changes will allow Council to provide services that match community expectations.

"Council's pricing submission to IPART was shaped by community feedback and the change is vital to ensure the maintenance and development of critical infrastructure and to meet the service levels our community expects. We're now encouraging locals to review the final determination for our region to understand the change."

Council Administrator, Rik Hart said the determination better balances

services levels, costs and community need.

"IPART has carefully balanced customer concerns about price increases with the need to ensure Council has enough funding to improve its delivery and network operations and maintain its assets."

Community members can review the pricing for the water, sewerage and stormwater drainage pricing determination for the Central Coast by visiting IPART's website.

IPART stated in section 2.4 of it's report: "Customers support funding stormwater services through local government rates, but some are concerned about the impact.

Some of those in the community argued that they were not receiving adequate (or indeed any) stormwater services and should not pay the proposed increase in charges. Submissions on stormwater typically focused on a lack of kerb and guttering in residential streets, and water that drains off slowly. Rural customers also argued that they should not pay stormwater charges because of the work they do to manage stormwater.

Our view is that stormwater services should be funded by local government rates because they provide broader benefits to the community. This would require the council to transfer all stormwater costs to its local government rates fund. Our survey on stormwater funding also showed that most customers support paying for stormwater through their local government rates.

However, CCC Water has options with how it would fund the stormwater services, if not through the prices we set. It should consult with its customers about how to achieve this."

*Information from
the Central Coast Council and
the Independent Pricing
And Regulatory Tribunal*

10am -
1:30pm
1st June

We're Hosting a Biggest Morning Tea

Please support us!

- Fresh scones
- Kids cupcake decorating comp'
- Banana bread bake-off - help judge!
- Plant stall & lucky door prizes
- Yoga & TaiChi demo






Help those impacted by cancer

4340 1724, admin@knc.net.au
10 Langford Drive, Karingong

STOP !

Next issue Published
17th June 2022

**** DEADLINE ****

**** 10th June '22 ****

Send adverts & copy by
email, website or post.
Email, website, FB or
phone for enquiries



Wild dog and fox control program

Dear neighbours,

Greater Sydney Local Land Services will be leading a wild dog and fox control program in the Central Coast.

As a result of strong support from local landholders, National Parks, Central Coast Council and the Forestry Corporation we have been able to develop and lead a broad, integrated pest animal control program. The high number of properties involved has been critical to achieving optimal outcomes and is crucial to the success of the program's implementation.

This program is part of our ongoing work to reduce pest animal numbers and their impact on primary production and native wildlife in these areas.

The below landholders are participating in the current program and will be laying 1080 wild dog and fox ground baits and Canid Pest Ejectors on the listed properties. The program will commence on the 6 June and run until 4 July 2022. **Please restrain all domestic pets and working dogs during this time.** In the unlikely event of accidental poisoning of domestic pets seek immediate veterinary assistance.

60 Hitchcocks Lane Dooralong
277 Ravensdale Road Ravensdale
33 Dunks Lane Jiliby
3653 Wisemans Ferry Road Greengrove
Central Coast Wetlands-Pioneer Dairy,
1897 South Tacoma Road, Tuggerah
59 Chandlers Lane Wyong Creek
707 Settlers Road Lower McDonald
304 Ravensdale Road Ravensdale
15 Murraba Road Kulnura
1260 Wisemans Ferry Road Somersby
13 Springs Road Kulnura
916 Settlers Road Central McDonald
1398 Wisemans Ferry Road Somersby

1396 Wisemans Ferry Road Somersby
1395 Wisemans Ferry Road Somersby
1310 Wisemans Ferry Road Somersby
145 Beaven Road Jiliby
964 Yarramalong Road Wyong Creek
625 Ravensdale Road Ravensdale
602 Ravensdale Road Ravensdale
1224 Dooralong Road Dooralong
Hansen Quarry 24 Reservoir Road Somersby
29 Vittasalo Road Somersby
McPherson State Forest, Kulnura
Mangrove Creek Catchment Dam, Kulnura
Mangrove Creek Weir (Dubbo Gully),
Mangrove Mountain

If you would like to participate in a future program or have any questions please contact:
Gareth Cleal on 0417 235 366, (02) 4724 2100 or gareth.cleal@lls.nsw.gov.au.

Electoral Boundary Angers Many Kulnura Residents!

After the last state election your Central Coast Plateau Chamber of Commerce (CCPCC) advocated to the Australian Electoral Commission (AEC) that the George Downes Drive boundary which separated the Kulnura Community on all three levels of government should be changed to encompass all Kulnura residents and that a suitable new boundary could be along the escarpment line between Kulnura and Yarramalong.

The problem of a divided community only manifested when the Kulnura election booth ceased to be a dual Robertson/Dobell and Gosford/Wyong for both state and local government elections. A single polling booth meant that all the residents on the LHS of George Downes Drive had to either vote absentee at Kulnura or go to one of the other booths at Somersby, Peats Ridge or Mangrove. Not a huge drive, but it was certainly not acceptable

BLZ_GSD157

GOSFORD DENTAL CENTRE

incorporating

Mangrove Mountain Dental Centre

Shop 3, 9-12 William St. Mall, Gosford

This is opposite the Imperial Centre next to Kibble Park

Dr Michael Kotis BDS Syd. Uni.

- ✦ Family dental care
- ✦ Dental emergencies
- ✦ Preventive care
- ✦ Orthodontics - teeth straightening
- ✦ Dentures
- ✦ Dental crowns & bridges
- ✦ Wisdom teeth removal
- ✦ Oral hygiene & dental care products

4325 1710

info@CentralCoast.Dentist

*Medicare childcare benefits bulk-billed
Veterans affairs cardholders accepted*

We accept Dental Vouchers issued by NSW Government Health

HICAPS available

MANGROVE MOUNTAIN PHARMACY



Monday – Friday: 8:30am-6pm
Saturday: 9am-2pm Sunday: Closed

Covid-19 Vaccines & Booster

*Pfizer, Moderna, AstraZeneca
including kids 5-11yo*

Now Available - Phone for Bookings

- 💧 Free webster packing and all your pharmacy needs
- 🛒 Household goods and gifts
- 🥛 Milk, cold drinks
- 🏠 Return and Earn collection
- 📦 Parcel point outlet

3/1 Waratah Road, Mangrove Mountain, NSW 2250

Phone: (02) 4374 1457 Fax: (02) 4374 1479

Email: mangroventpharmacy@gmail.com

to the majority on the basis of just wanting to vote at their local booth.

A petition signed by the vast majority of Kulnura residents was sent to the AEC. The AEC replied that a federal boundary would not be changed prior to the next federal election (the one held last Saturday) but that they had sent the request to the NSW Electoral Commission (NSWEC) as that would be the next redistribution and change of boundaries.

The state boundary, after representation to Lucy Wicks, the last Member for Robertson and the local Liberal Party Branch, has been changed to follow property lines along the escarpment between Kulnura and Yarramalong. Yarramalong will remain with the Electorate of Wyong while the Electorate of Gosford will include the Kulnura residents east of George Downes Drive.

The CCPCC will refresh its advocacy to the AEC to make the same change to the federal electoral boundary as NSW has. We will use, as an added rationale for the change, the vast number of absentee votes cast on Saturday at the Kulnura booth and the anger expressed to volunteers and the AEC booth workers, who, of course, had nothing to do with the historical boundary or that the booth was changed from a double electorate to a single entity.

At the next state election all Kulnura residents will be able to vote

at the Kulnura booth without having to go through the process of absentee voting.

Lorraine Wilson
Chairman
Central Coast Plateau Chamber of Commerce



*“And thus I clothe my
naked villainy
With odd old ends stol’n
out of holy writ;
And seem a saint, when
most I play the devil.”*
William Shakespeare
‘Richard III’

WANTED!
**Old or Unwanted
Ride-on Mowers
& Quad bikes**

I am willing to buy that mower that you just dont need anymore and is filling up your shed!

Contact James Morgan
on **0405 178 197**

EBH
BUILDING GROUP
PTY LTD

OUR SERVICES INCLUDE:
Custom built homes • Granny flats
Extensions • Carpentry services
Renovations • Decks & Pergolas
Waterproofing & Bathroom renovations
Disabled modifications
Asbestos removal
Building maintenance

Dane Meredith | Builder
0243513200
0420906499
dane@ebhbuilding.com.au

Absoloot Septic

For all things septic, including pump outs, call us today

Your local certified AWTs septic agents
Website – www.absolootseptic.com.au
Phone 02 4362 1060

CNS Electrical
Lic No. 214132C

Your local Electrical Contractors on the mountain, specialising in Rural, Domestic, Commercial and Industrial works, including:
Excavation, Trenching, Mains & Sub-mains, Voltage Calculations & Future Planning.

Call Cameron for a quote on: 0438 695 600
Office: 02 9157 7646
Email: admin@cnsselectrical.com.au

CENTRAL COAST TERMITE REPAIRS

Complete Building Repairs

- general carpentry
- structural rectifications
- excavation

call 0418 112 630

Southern Diesel Services
ROAD, CIVIL AND AGRICULTURAL REPAIRS

**Workshop / Mobile 24 HRS
Mangrove Mountain**

Engine Control Units, Engines, Gearboxes,
General Maintenance, Hydraulics

Mitchell Crane
PH: 0431 095 365

UNION CHURCH UPDATE 29TH MAY 2022

Since our last update, the Committee of the Mangrove Mountain Christian Group Inc has given much consideration to the Liquidator's proposal. Our regular readers will recall that the Liquidator had offered to apply to the NSW High Court for orders to appoint our congregation, the Mangrove Mountain Christian Group Inc, to the position of replacement Trustee for the Union Church. His all-up cost estimate for doing this was \$150,000 and this amount did not include our own legal costs.

In attempting an alternate solution, we asked our local State MP Liesl Tesch to approach the NSW Attorney General, Mark Speakman on our behalf. Unfortunately for us, the AG's response was that he lacked the authority to directly appoint a new Trustee for the Mangrove Mountain Union Church property. But he did say that "to replace a trustee who has gone into liquidation should not be so pricey", though he offered no cheaper alternative.

Our next move has been to engage a specialist Trusts Lawyer to find a more direct and less costly route for the appointment of the MMCG Inc. to be replacement Trustee for the Mangrove Mountain Union Church. We are awaiting his final advice. The Liquidator continues not to respond to our request for regular access to the Union Church for Christian worship (the purpose of the Trust!!!). We have even offered a rental agreement.

A fundraising working group has been formed within our MMCG Committee. Thanks Elaine Raines, Judy Betteridge and Ross Howard for stepping up to this task. The working group is into its first event, helping Treasurer Ryan Howard co-ordinate plant sales over the Harvest Festival weekend 11-12 June. The plant stalls are at two locations – The Mangrove Mountain Public Hall and the Silver Gully Event Hub. We welcome your support.

Earlier today, several of our congregation met in the Union Church grounds for a clean-up and BYO picnic. Thanks to Ryan Howard for co-ordinating our efforts. Starting at 11am, the tidying was done by 12.30, and we then enjoyed a picnic in the sun. The photo shows the fruit of our labours.

Our Mangrove Mountain Christian Group congregation is growing, with worship services on the 2nd and 4th Sundays of each month. However, for June our first service is this Sunday 5th which is Pentecost, the celebration of the descent of the Holy Spirit on the disciples of Jesus. This also avoids a clash with the Harvest Festival. We warmly welcome all to come and hear our Guest Preacher's message.

Our Bible Study group continues meeting on the 1st, 3rd and 5th Monday evenings from 4.30 pm to 6.00pm. During the cooler months, and without access to the Church, we are meeting in our homes. Please contact me for location details. "Test Drives" welcome.

Thank you to all who have contributed to our Save the Union Church Campaign. Please continue with your support, letters to the Liquidator, and donations - see help suggestions elsewhere in this newsletter.

Robert Meggs, President MMCG Inc (tel – 0429 443 310)



CROSSROADS

CRANES

* Free Quotes *

**40t All Terrain Crane
20t Franna, Truck hire**

Now serving Mountain Districts & beyond

email: sales@crossroadscranes.com.au
Web.: Crossroadscranes.com.au

Call Alan 0456607501

The Grass Cutters

- Slashing
- Rock picking
- Farm cleaning and clearing
- Cultivation and more
- Obligation-free quotes

Call **0419 412 993**
Email pat@thegrasscuttersrus.com

See us in action at: thegrasscuttersrus.com

Dr. S. ANANDASIVAM

(ANAND)

MBBS, FRACGP, AMCC

For Doctor Appointments:
Monday - Friday 9am- 5pm

*Laverty Pathology Service
Available:*

*Monday to Friday 8:00 till 3:30
Saturday 8:30 till 12*

Medicare Bulk Billing

**1639 Nurses Road
Central Mangrove, 2250
02 4373 1914**

CFL and LED Lights – are they safe?

What an interesting read in the previous edition. As a disclosure I am not a Soul Speak Healer and QHHT Practitioner but have to struggle along with 14 years formal education in domestic electricals, analogue, digital electronics and microprocessors followed by 66 years of professional experience in industrial, aviation and medical electronic design, construction and servicing.

Just for the record, an incandescent lamp flickers. Its thermal time constant though equates to a heating time from 0.05 Sec to about 1.0 Sec for a lamp from 10 watts to 1000 watts respectively. (The heating time is from 0 to 90% of its rating after turn on). At 50 Hz both the positive and negative halves of the AC is used so there is a succession of heating pulses at 100 Hz. So after each pulse the lamp cools a little, the light output falls until the next wave starts heating again so there is small but measurable 100 Hz flicker.

Blue light - There is much discussion and much sales spiel promoting glasses that cut the blue output of any lamp, much sales spiel of phones, tablets and sunglasses etc that reduce blue light. I am not aware of any reputable source or research that gives any credence to any such proposition.

Note, I said reputable.

Dirty Electricity - To power a LED or CFL a “switch mode supply” or SMPS may be used where the transformer runs at typically 20000 Hz upwards as opposed to 50 Hz, The reduces the transformer size from something like a 100 mm cube to about a 15 mm cube which allows it to fit into a lamp base. It will be somewhat sinusoidal in waveshape with harmonics extending into the Mhz region. The harmonics are what you hear on the AM radio as

**SOMERSBY HALL
COMMITTEE
& SOMERSBY CWA**

**Are joining together on
June 11th & 12th**

*Devonshire Tea’s, Plant Sale,
Handicraft, Bobbin Lace Demo,
Spinning Demo*

**At The Somersby Hall
830 Wisemans Ferry Road.
From: 9am To 3pm Each Day**

**COME AND SUPPORT THESE TWO
LOCAL COMMUNITY GROUPS**

suggested. It is not dirty any more than the music you listen to is dirty because there are non sinusoidal waveforms in it. The SMPS will be of the same basic design as the one in your TV, radio, bedside clock, mobile charger, plug packs, air conditioner, laptop etc and as equally benign.

The very concept of “dirty electricity” and especially a “build up” of it belongs to frankly, faeries and unicorns in the garden. It is totally, utterly and absolutely without merit.

Flicker Frequency- An incandescent has a flicker frequency of 100Hz or a 100 times a second.

The LED or CFL because it runs off a SMPS will have a flicker frequency

of 20000 times per second and upwards.

Brainwaves - These are Delta 0.5 to 4 Hz, Theta 4-8 Hz, Alpha 8-13 Hz, Beta 13-30 Hz and Gamma 36-90 Hz. Incidentally, Gamma is not new, it has been around since EEG machines were designed to measure the millionths of a volt brain waves are. So we have LED/CFLs with a flicker frequency over 20,000 Hz and incandescents with a flicker frequency of 100 Hz. I wonder which one is closest to the Gamma biological range of 36 to 90 Hz? Brainwaves are pure and sinusoidal? Sorry, almost never in the ones I’ve dealt with.

Name & address supplied

Soul Speak Healing



Your emotions are the window to your soul.

Soul Speak Practitioner
&
QHHT Practitioner Level 1
(intern)

Sharyn Unitt
Email: shazzaunitt@protonmail.com
Phone: 02 4376 1014, after 2pm
Mobile (for sms only): 0408 967 507

TKG 

Welding & Fabrication

- ✦ Mobile welding ✦ Fully equipped service truck
- ✦ Heavy machinery repair & modifications
 - ✦ Air arc gouging ✦ Hard facing
 - ✦ Steel horse & cattle yards
- ✦ Sheet metal work, gates and railings

Tim Green 0427 462 717
timdgreen1971@gmail.com
www.tkgweldingandfabrication.com

What is Intuition?

The best way I can define intuition is to say that it is a sense (ie. the 'sixth' sense) that reaches beyond our physical experience. There are the five physical senses we all know: sight, sound, touch, smell and taste. Then there are the metaphysical senses which as a group can be referred to as 'the clairs'. Clairvoyance relates to the 'third eye' which is when one receives images in their mind (like one gets whilst dreaming). This can be in the form of a moving image or a symbol/metaphor that needs interpretation by the receiver, such as an analogy that can be used to describe a complex idea that helps a person to understand the message. Clairaudience relates to sounds that a person can 'hear' in their mind, like an imaginary voice. Clairsentience (or pre-sentience) relates to one's ability to sense when something is about to happen. Claircognizance relates to "knowing what you know without knowing HOW you know". These are the most known types of 'clairs'.

These metaphysical senses in totality would be what I would call 'intuition'. It's a knowing that you have within you that you can't define in reference to the physical experience, except maybe to how we often refer to it as that 'gut feeling'. The soul communicates to us through our nervous system which is why psychic intuitives will experience the 'chills' (goosebumps) when they have tapped into a universal truth, and why we sometimes get that dense feeling in the pit of our stomachs when we just know that something isn't quite right, which derives from the vagus nerve. That's your intuition speaking to you! Learn to trust that because this gut feeling is based in TRUTH.

Society in general has been taught to believe that only 'special' types of people have these abilities. But I'm here to tell you that each and every human being actually has access to these abilities, but we've been so heavily programmed through various

mediums to believe that we aren't able to develop or utilise these psychic skills. And our bodies have been constantly bombarded with toxins in our food, air, water, medications and environment that have led to a 'dumbing down' of these abilities. (Hence my emphasis on detoxing in my recent article on the topic of 'sovereignty'.) To be honest, you would be using these abilities every day to varying degrees and may just not have awareness of it. I call this 'conscious awareness'.

Young children are inherently born with these abilities intact until the education processes start to distract them from their psychic connections (eg. imaginary friends are merely an interdimensional experience perceived through the 'imagination' which is REAL to the child, but not perceived by adults around them who cannot perceive that dimension – I'll add here that a dimension is just a field of a different frequency out of our range of perception – but that's a topic I'll leave for another day).

Very often our intuition comes in the form of 'aha' moments which we might otherwise refer to as epiphanies, 'lightbulb' moments or 'brainwaves'. Or you might have caught yourself saying things like "I have a FEELING that...", or "something tells me that...", or "a thought just came to me that...", or "I don't know why I think this but...", or generally nearly any sentence that begins with "I feel that...". (Because it's coming from the heart/emotional space.)

There are two things that can help you to know if something is coming more from your intuition than your conscious (logical) mind. One is that the thought will often come to you 'out of the blue' without expecting it, eg. when you are getting ready to go to sleep at night (one of the most common) or when you are in the shower or doing a mundane task such as ironing, washing up or watering the garden, sewing, driving or going for a gentle stroll when the conscious mind is busy. The other one is that the

thought or idea might come across as a bit 'weird' or something that you wouldn't usually think of. It feels foreign to you, perhaps.

The reason for this is that your intuition comes from a place beyond your conscious mind that has bypassed the reasoning and analytical thought processes that tend to be created from the logical mind which goes through the filter of one's ego. The ego will always challenge the intuitive thought and judge it to be 'absurd' because the ego is attached to deep layers of programming which places a biased view on it. The intuitive mind (which actually derives from the heart-mind, not the brain-mind) does not have these biased programs in place.

A person who has learned to trust their own intuition will more easily adopt and act on these 'ideas' without needing to think over things, as the more one thinks over things the more complicated and muddled things become, which causes ambivalence. This is why psychic intuitives will more likely take 'leaps of faith' and make decisions that other people would think are impulsive or crazy, despite the intuitive being quite confident in their decision. They trust their first impressions of people and objects, because they know it's their soul whispering quietly to them. Psychic intuitives are good at making decisions on the spot, without much hesitation.

Intuitive people tend to be more spontaneous and adaptable and will often prefer to live in an unstructured experience, and not rely on a rigid routine. They are more prepared to step out of their comfort zone and push themselves to experience things they never before thought possible. They are classically very good at living life 'flying by the seat of their pants' or 'winging things as they go'. (A QHHT practitioner does this in every session!) This is because they are living in 'the present moment' which brings much freedom to the way one lives their life, without the constraints of time (mostly).



Mountain
FIREWOOD

Seasoned local firewood cut, dried and ready for delivery.

Paul – 0437 006 060

Mountain.Firewood19@gmail.com [Mountain Firewood](https://www.facebook.com/MountainFirewood)

JOHN DRAPER & SON
ELECTRICAL CONTRACTORS
Licence No. 65229C

**Commercial, Industrial,
Domestic, Rural Installation**

*Serving the Mountain and Districts
for over 50 years*

For prompt service and quotes

Peter: 43761141, Mobile 0428 732 623
John: 4376 1346, Mobile 0427 106 859

MANGROVE MOUNTAIN UNION CHURCH - A COMMUNITY ENDEAVOUR

The heritage listed Mangrove Mountain Union Church was built by the community on land purchased by the community and was dedicated in



1913.

Over the years members of the community contributed to the maintenance and various enhancements of the church building.

Then, some 85 years later, in 1998 a major improvement was completed. This, the "Union Church Family Education Centre", known commonly as the Church Hall, was constructed with the intention of providing a place for Christian education opportunities and events for the community.



to the construction of the Centre. His efforts were recognised by a plaque that was given to him.

Despite the history of community support and donations, the Incorporated Association that had been the Trustee of the church was put into liquidation with the plan to sell the church and all property. Unbelievable!

There continues to be strong support for the church and services are being held in Mangrove Hall while negotiations with the liquidator to gain access

The Centre was built with funds, material and hands on efforts donated by the community and over the years has served it's purpose well.

Greg Koutoulas, who had been a long term resident of the district organised construction, co-ordinated the effort and contributed a great deal

for the community continue.

And, thanks to a strong Trust Deed put in place by the original trustees and the founding community members, the sale of the church has been halted and efforts are under way to return the church to the community.

Keith Aranjó

I think you might agree that after having read this, you may begin to 'join the dots' and learn to recognise some moments where you have utilised this intuitive sense, and once you become more accustomed to recognising it you may find that you begin to see things in a slightly different way. Or you may not, and that is okay too. Everyone develops these abilities at their own pace to some degree at least. Sometimes all it takes is for someone to point a few things out for you to see how everything connects...

I have approximately 7 'free' practise QHHT (2-4hr interview and 2hr hypnosis) sessions available to complete my QHHT internship. QHHT = Quantum Healing Hypnosis Technique. For enquiries or bookings, please email me at shazzaunitt@protonmail.com or call 4376 1014. Soul Speak Healing sessions (2hrs average) are available for those who are not keen on the hypnosis component, but it can still bring incredible insight to how one views their health and wellbeing.

Sharyn Unitt

Soul Speak Healer and QHHT Practitioner Level I (intern)

Big Jims Lawn Mowing

🚛 Property Maintenance

🚛 Specialising in Air BnB

James Morgan

0405 178 197



- * Post & Rail
- * Fence
- Painting
- * Repairs
- * Bobcat Hire

Ricks Rural Fencing

- * Chain Wire
- * Wire Stock
- * All types of rural fencing

Serviceing the Mountain for over 30 Years

Phone Rick 43731155

Mangrove Mountain Plumbing

General Plumbing, Renovations, New Homes, Pipe & Cable Locator, Gasfitting, Drainage, Blocked drains, Jet blaster, CCTV

SECOND GENERATION PLUMBER WITH OVER 28 YEARS EXPERIENCE

Steven Zouroudis Ph: 0422302159

Lic-183316C

KULNURA & DISTRICT GARDEN CLUB – JUNE 2022

What a warm and cosy gathering we shared for our May meeting. Peter and Patricia Flannery hosted the morning at their beautiful Mangrove Mountain property, where some members walked around the farm with a cuppa, some warmed themselves by the fire in a massive fire pit, and some sat in comfort in the multi-use renovated farm building. We learned that Patricia was a successful protea grower in the 80s and 90s, which led to creating a dried flower business in Sydney for several years prior to retiring. Retiring may not be an accurate term, as she is now concentrating on her work as an author with her new children's picture

book series, "The Adventures of the She-Oak Critters".

A delicious pumpkin soup around the fire ensured the conversation flowed well into the afternoon.

We love the camaraderie and knowledge shared by our members and every meeting guarantees we learn something new and interesting.

June in the garden:

With the temperature dropping and that lovely chill in the air, June is the month to:

- Transplant deciduous trees and shrubs
- Take hydrangea cuttings
- Move sensitive pot plants into a covered area
- Sow broad beans and peas, onions, cabbages, cress, lettuce, climbing and dwarf peas, rhubarb crowns, shallot bulbs spinach
- Sow gypsophila, hollyhock, lunaria, marigold, nasturtium, petunia, portulaca, salvia, snapdragon,

statice, strawflower, sturts desert pea, sunflower, swan river daisy, verbena, waratah

• Plant roses

• REST! Winter is the season for snuggling by a warm fire, reading a good long (gardening book) taking time to reflect that the year is now half-way through, and using your veggies and herbs to make nourishing soups and slow-cooked delights.

Here's my favourite vegetarian soup recipe for winter:

Lentil & Brown Rice Soup

5 cups vegetable stock

1 ½ cups red lentils

1 cup brown rice

1 can diced tomatoes

2 -3 carrots, diced

1 onion diced

1 stalk finely chopped celery

3 cloves minced garlic

Handfuls of fresh basil, oregano, thyme, parsley and a bayleaf

2 tablespoons cider vinegar

Pinch salt

Combine everything except parsley and vinegar in pot and bring to boil

Simmer, covered, stirring occasionally for 45 -55 minutes until lentils and rice tender

Stir in parsley and vinegar.

Optional: Service with a generous sprinkle of grated parmesan cheese

Book of the month:

PLANT by Phaidon Editors

This book is a visual feast and celebrates the extraordinary beauty and diversity of plants. It combines photographs with watercolours, drawings, and prints to capture the extraordinary beauty of plants. It is a compilation of the most stunning work by celebrated artists, photographers, scientists, and botanical illustrators, and contains rare and previously unpublished images. It makes a spectacular gift for plant lovers of all ages and the cover is a work of art.

<https://www.goodreads.com/book/show/30212372-plant>

June Meeting:

We usually meet on the second Monday of each month at 9:30am for a 10am start, but because the June date falls on a long weekend, our next meeting will be on Monday June 6th, at the Bath House Garden, Maitland. This is a 4 acre country garden set in rural Maitland, and is a popular venue for weddings and special events.

Please email kulnuradgc@gmail.com for information about meetings, membership, or any other questions, or feel free to call Jacqui on 0455 364 262

Happy gardening!

Karynne Courts
(KDGC Committee member, 2022)



**Australian Plants Society
Central Coast**

June meeting
presents

Colette Livermore
chairperson for
Palm Grove Ourimbah Creek Landcare Group



When
1.30 for 2.00 pm start
Saturday, 11th June 2022

Where
Phillip House
21 Old Mt Penang Road
Kariong

Cost
\$3 Members & Visitors (with lucky door prize)

Enquiries
Pat Carlton, 43000809
or see our website
austplants.com.au/central-coast-events

APS-CC and Phillip House follow standard COVID safe practices



Top Left: PLANT book of the month, Bottom Left: Winter is soup season, Right: An attentive audience

On The Go Constructions Pty Ltd
Specializing in the building of chicken sheds

Charlie Muscat is well known in the industry, with over 12 years experience and has a reputation for quality workmanship.

- * New Chicken Sheds * Tunnel Conversions * Roofing
- * Machinery/Farm Sheds/Stables/Lofts/Piggeries * Coolrooms
- * All Fabricating services - All frames & trusses are fabricated by On The Go Constructions to Engineer specifications.

Call Charlie on 4374 1114 or 0408 684 719

VISION FOR LIFE...
 For all your concrete & pumping services, call Louis on 0418 409 576

ALL ASPECTS OF TREE WORK



- Truck & Chipper
- Cherry Picker
- Excavator

Local Arborist, friendly & experienced team.
 Insured and certified.
 Tree removals, pruning, emergency work.

Tim - 0412 985 422 or tijanotreco@gmail.com

CUSTOM DESIGN | BUILDINGS | EXTENSIONS | ALTERATIONS | DECKS |   



0410 100 616 | kim@kdfconstruction.com.au | LIC NO. 267735C

HERFO'S WOODSHED

QUALITY SEASONED FIREWOOD
 Cut & split vintage Ironbark
 Sold via National Measurements Act
 Registered Public Weighbridge

More heat for your dollar
 Weight ticket with each delivery

call to order:
4373 1316

www.herfoswoodshed.com.au




Save Fairview Homestead!

Located on Ten Mile Hollow Road in Mangrove Creek, on the Central Coast of New South Wales, Fairview Homestead is a free-standing home and is the last remaining colonial homestead in the Upper Mangrove Creek Central Coast water catchment.



The Mangrove Creek area of Australia was first settled within approximately 20 years of the arrival of the First Fleet, with many early settlers establishing farms in this well-watered and fertile valley. These farms provided crops and produce to the new Sydney colony via boat, exiting Mangrove Creek into the Hawkesbury River at Spencer; there is evidence of road and bridgeworks dating to the early 1800s. The area also provided the first road access into the Central Coast, linking the Green North Road through Simpson's Track to Ten Mile Hollow, up Pemberton's Hill and into Gosford.

There is a rich history and cultural identity tied to this area, and Fairview Homestead stands as a representative of this. The Fairview Homestead Association was formed in 2007 with the purpose of protecting the Fairview Homestead from demolition, and restoring it to a safe standard to encourage visitors interested in the history of the community. We plan to establish a living museum on-site, as well as a virtual museum, so that people interested in learning about this significant social and cultural slice of the Central Coast history can do so in both a physical and digital space.

The Fairview Homestead Association invites interested people

Mangrove Mountain Christian Group Inc



Huge Plant Sale
Saturday 11th and Sunday 12th
June long weekend 2022
Two locations
Mangrove Mountain Hall
and Silver Gully Farm
9am till 3pm both days
All funds raised in support of the historic
Mangrove Mountain Union Church and Public Hall



to join us in our efforts to raise funds to protect and restore this valuable piece of history. After some setbacks that have forced us to pause our fundraising efforts, we are keen to reconnect with the local Mangrove Creek community and restart our plan to save Fairview Homestead. BBQs, golf days, and other fundraising events will be on the horizon, so watch this

space! For more information about the history of Fairview Homestead, the Association, and the plans for restoration of the site, or to become a member, visit our website <https://fairviewhomestead.com.au> or our Facebook page <https://www.facebook.com/fairviewhomesteadinc>.

Dr Nicole Kennedy

RURAL INSURANCES

If you're in need of assistance with your insurances give Shortland Insurance Brokers a call!

4324 5244

info@shortlandinsurance.com

Level 2, 27 Dane Drive GOSFORD

Quote the codeword: **"MOUNTAIN"** for special offer

  **NSW RURAL FIRE SERVICE**

PLEASE USE QR CODE TO NOTIFY US WHEN BURNING



CENTRAL COAST'S CHEMICAL CLEANOUT EVENTS

Council is pleased to confirm new dates for the Central Coast's Chemical CleanOut event in Long Jetty following cancellations due to the severe weather conditions that unfolded earlier in the year. This includes the addition of two new events in August for the community to take part in.

Community members can safely drop off their chemicals for free between 9am to 3.30pm daily, on the following dates:

- Long Jetty Council Depot, on Morris Place, Bateau Bay from Saturday 11 to Sunday 12 June 2022.
- Event Park, Kariong, located off Kangoo Road, on Saturday 6 and Sunday 7 August 2022
- Charmhaven Council Depot, on Chelmsford Rd, Charmhaven on Saturday 13 and Sunday 14 August 2022.

Council Unit Manager Waste Services and Business Development, Andrew Pearce said "We look forward to welcoming community members back to these free events, with an additional two events added this year. These events allow residents to dispose of hazardous materials safely and for the recovery of reusable materials."

"This is just one of the many resource recovery initiatives offered to residents beyond their household waste and recycling collection services, which the community can discover more about by checking the A-Z Waste Disposal and Recycling Guide at 1Coast.com.au."

Items that can be dropped off include pesticides, gas bottles, fire extinguishers, fluorescent globes and tubes as well as any unknown or unidentified chemicals which are accepted for identification and correct disposal.

Council urges residents to transport material safely, keep chemicals in the

Big Flower
Pots Statues Fountains | Plants Flowers Gifts

SUPER NURSERY

24 Burns Road, Ourimbah 2258
beside M1 Interchange

02 4362 2236
c.boes@hotmail.com
www.bigflower.com.au

The Biggest Nursery on the Central Coast - 10 Acres!
Open 6 days Tue to Sun 9am till 5pm Closed Mondays

VC DENTAL
Care For Life

ACCREDITED

OPEN 7 DAYS
40 YEARS LOCAL

General Dentistry | Emergency Care | Cosmetic Dentistry
Orthodontics & Invisalign | Dental Implants | Oral Surgery
Sleep Dentistry IV Sedation | Wisdom Teeth Removal
3D CT Scanning | CEREC same-day ceramic restorations

02 4323 1933 | www.vcdental.com.au
Suite 10, 36-40 Victoria Street, East Gosford NSW 2250

NEW PATIENTS
➤ Comprehensive checkup & clean
Includes up to 5 x-rays
No Gap (with health insurance) or \$290

OFFERS (all patients)
➤ Free orthodontic consultation
➤ Free dental implant consultation
➤ Free cosmetic makeover consultation
➤ Sport mouthguards: No Gap or \$99

FINANCE
➤ We bulk bill the Medicare CDBS
➤ Zip Pay & Zip Money payment plans
➤ We partner with SuperCare

original container and remain in their vehicles when dropping off hazardous waste.

For the full list of chemicals that can be dropped off, call 131 555 or visit the NSW Environment Protection Authority website.

The Household Chemical CleanOut program is a NSW Environment Protection Authority Waste Less, Recycle More initiative funded by the waste levy.

Central Coast Council
Media Release

CVO COAST & VALLEY OIL

PICKUP OR DELIVERY

A Full Range of Oils, Lubricants & Workshop Consumables.
PLUS - Bulk Cleaning Products for the Home & Workshop.
PLUS - The Must Have Camping Accessories!

U6, 17 CRAFTSMAN AVE, BERKELEY VALE
Ph:(02)43885911 OPEN: 8.30AM - 5 PM
www.coastandvalleyoil.com.au

COASTAL TRUCK LICENCES

LR to HC Licences

Paul Viola: 0437 006 060

ABN: 36 659 041 880
info@coastaltrucklicences.com.au
Coastal Truck Licences



TARTAN
SC

The R Record-Br

BY THE LEADERS IN LIFESTYLE PROP

\$10,600,000



IN FIELDS
OLD

Region's Breaking Sale

PROPERTY, SCOTT WALL & SHAUN COFFEY.

1,000,000

Reach for the Sky

Crossroads Cranes has recently established operations in the district and has been gradually building their work portfolio.

With a 40t All Terrain Crane as well as a 20t Franna their capability is enormous.

Email: sales@crossroadscranes.com.au

Web: Crossroadscranes.com.au

Call Alan 0456 607 501 for a free quote.

Right: Relocating a portable building to the Australia Wildlife Walkabout Park at Calga Below: 40t all-terrain crane



Mangrove Mountain Landfill

Since our article in the last Community News, we have written to the Central Coast Council administrator, Mr Rik Hart, to tell him of our long association with the landfill case.

We have also asked to meet with him, together with members of Mangrove Mountain & Districts Community Group, to get his assurance that the Central Coast Community gets the outcome it deserves.

That is, that the landfill site remains closed and the original plan for an 18 hole golf course is built.. Not a waste facility.

The Council has responded on behalf of Mr Hart and says that it remains committed to its efforts to

prevent Verde Terra from instituting a regional waste facility at Mangrove Mountain without an Environmental Impact Statement being completed. That issue is at the centre of the dispute.

Council continues to consider the impacts of the judgment in the land & Environment Court, and its appeal prospects.

Letters to the administrator from as many community members as possible will help our fight to keep the landfill site closed. Rik Hart needs to know that everyone in the community is demanding that the right decision is made. Please send a brief message stating that you don't want a waste facility at Mangrove Mountain:

theadministrator@Centralcoast.nsw.gov.au

Mountain Districts Association





LONGRIDGE CONTRACTING
EXCAVATION & TRUCK TIPPER HIRE

Services:

- Site Levelling
- Land Clearing
- Horse Arenas
- Roadways
- Certified Fill Material

Machines:

- Excavators / Augers
- Posi Track with Laser Level Grader
- Dozer
- Truck & Trailer Tipper

Michael Schembri
0419 236 788

Follow us  



thinkwater®
PEATS RIDGE

AGRICULTURE • COMMERCIAL • RURAL • INDUSTRIAL

Australia's Leading Water Solutions Network

- ◆ Water Treatment
- ◆ Irrigation Systems
- ◆ Mowers & Ride-Ons
- ◆ Fire Protection Systems
- ◆ Water Tanks

- ◆ Pump Systems
- ◆ Fertigation
- ◆ Pipes & Fittings
- ◆ Chainsaws & Generators
- ◆ Repairs

Ph 4373 1466
780 Peats Ridge Road, Peats Ridge

www.thinkwaterpeatsridge.com.au





CENTRAL COAST
SELECT
PROPERTIES

FOR SALE



Contact agent for price

1574 Wisemans Ferry Road, Central Mangrove

	5
	2
	10
	25 ac



Idyllic Rural Lifestyle Package

Welcome to "Rutherglen" an ideal escape from the hustle and bustle of city life. At 25 acres, this is both a highly sought after land size and the ideal central location, surrounded by high quality properties.

The property is elevated, with a beautiful long driveway through the trees, ensuring total privacy. At the top of the driveway sits the brick homestead at the heart of the property, with a beautiful big country kitchen, vaulted ceiling, multiple living areas, 5 bedrooms including master with walk-in robe and ensuite.

The design of the house has been well thought out for practical rural living with undercover access to the oversized garage complete with workshop space, plus a laundry/ mudroom with separate toilet with both internal and external access while working around the farm or from the pool.

Centrally located for a quick commute to Sydney or the amenities of the Central Coast, the local primary school is just 2 minutes away, 4 minutes to the local cafe's, 5 minutes to Stonewall Equestrian and only 8 minutes to the M1 on ramp, 15 minutes to the train or University and just 39 minutes to Wahroonga.

Come and see it for yourself! Contact Tony Gilmour 0400 723 193 and Kate Kerslake 0427 233 090 today to arrange your private inspection.

Office Address:

Suite 1,
2/872 Pacific Highway
Lisarow NSW 2250

P: (02) 4324 8486

E: info@ccselect.com.au

Contact one of our agents | CALL 02 4324 8486



www.ccselect.com.au

CENTRAL COAST
SELECT
PROPERTIES

Mangrove Mountain Evening CWA

This year the Country Women's Association of Australia has been celebrating 100 years and gathered in the thousands for the AGM conference at the Royal Randwick. This was a lovely venue and we had a good week debating issues that are very important to member's state wide. One of the debates was about the coal seam gas mining in NSW and the recent renewal of three Petroleum Exploration Licences (PEL's) on the Liverpool Plains. The Breeza Plains has rich black soil and Tampar Springs farmers Helen Strang and Heather Martin, both CWA members will continue the fight to protect their farms. The CWA has long-running policy against coal seam gas in NSW and voted to lobby the government on this issue.

Fundraising to help support the local community has been achieved again this year and donations to Central Mangrove Public School, Kulnura Public School, River Cares Community Group and the Country Fair will be distributed over the next month.



Catherine with her second place certificate

There is a fundraiser for the Mangrove Mountain Hall on the June long weekend. Mangrove Mountain Evening Branch will have a stall on Saturday 11th & Sunday 12th from 9-3pm selling Jams, Pickles & goodies or just pop in to say hi.

Catherine and Karen B, both had cooking entries in at the State level and Catherine was very lucky to receive second place at State for her biscuits. What an amazing achievement with her first entry at the State

PRINTING SERVICES

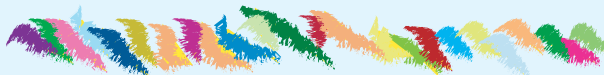
Lynwood Press
Your local printing service



- ✧ Flyers
- ✧ Booklets
- ✧ Labels
- ✧ Business Cards
- ✧ Stationery
- ✧ Duplicate Books

✧ **Banners, Signs & Displays**

All Types of Printing
Design Service, Scanning,
Colour Copying up to A3



Ph/Fax: 4374 1039 Mob: 0412 669 649
Email: enquiries@cnews1.com.au

Publishers of the "Community News"



- Sand • Soil • Gravel • Road Base
- Chicken Manure Supply and Shed Cleanouts • Bulk Deliveries
- B-Double Prime Mover • Truck and Dog
- Bogie Rigid-Tipper • Bogie Rigid-Tautliner • Semi-Tipper
- 45ft Flat-top, Stepdeck & Tautliner

Dallas J. Fabian
0417-285-047
dallas@djfhaulage.com

BUILDING YOUNG SINGERS TO SHINE IN THE TENTH DISCOVERED PROGRAM

Central Coast Council's exciting Discovered program is back for its milestone tenth series, with young locals now invited to showcase their singing and song writing talents.

For over a decade, the Discovered vocal professional development program has been supporting Central Coast singers and singer/songwriters aged 7 to 24 years. This program includes an exciting contest, a professional development program and performance opportunities that

level. Well done Catherine.

We are planning more outings and activities for the branch. Catherine has offered to show us how to cook award winning biscuits at our next meeting night on Tuesday the 14th June from 5-7pm and again on the 28th June from 5-9pm. We will also be cooking a jam or a pickle on the 28th. If you would like to come along we would be pleased to see you, just give Judy a call on 43771728.

Karen D. and I held a Jam and Pickle class for our Terrigal Evening ladies, at my home, where they learnt to make Lemon Butter, Plum Paste, Quince Jam, Chilli and Choko Pickle and Worcestershire sauce. We all sat around and enjoyed a pot luck lunch that the Terrigal Evening ladies brought for us to share.

We recently had a lunch at Spencer where we welcomed our husbands along to help us enjoy 'The General's' cooking. Jane is still selling our Jams, Pickles and Chutneys. This is a major fundraiser for our branch.

Just a reminder that we meet on the second and fourth Tuesdays of each month and welcome any new members to come along and see if you would like to join our friendly group.

*Judy Betteridge
President*

allow young people to hone their singing and song writing skills.

Budding young singers to the competition will be supported and mentored by music industry icons including Gina Jeffreys and Rod McCormack.

Council Unit Manager Leisure Beach Safety and Community Facilities, Phil Cantillon said the journey of Discovered develops young voices, builds community and further grows the skills of young people.

"Discovered provides a platform for young people to explore a career in singing, develop their confidence and receive guidance from music industry professionals," Mr Cantillon said.

"Last year many events were cancelled due to the ongoing pandemic, so it will be great to see competitors performing back on stage this year and vocal workshops delivered in person once again.

"The competition component of this program allows participants to compete for their share of an impressive prize pool, plus recording studio time, a vocal scholarship and professional development opportunities.

"Beyond the competition series, the Discovered Voices Youth Choir lead by International Award-winning Music Director Linda Wareham, provides free weekly singing sessions allowing local young people to work on their vocals in a group environment and take part in performance opportunities."

Council Administrator, Rik Hart said Discovered provides local young people with similar interests the chance to connect and form a sense of community.

"Discovered is a fantastic program that offers young local music talent the opportunity to connect and build on their singing and song writing skills," Mr Hart said.

"This program has paved the way

for some of the Coast's most exciting young music artists, who have gone on to do great things in the music industry.

"I encourage all local young people with a passion for singing and song writing to get involved, in order to forge connections that could undoubtedly open many doors in the future."

Discovered has supported and mentored some of the country's most celebrated young musicians including 'The Voice' winner Karise Eden, 'Australia's Got Talent' champion Fletcher Pilon and most recently Kelly Griffith (performing as ELASKIA).

Since winning the Discovered competition in 2014, Kelly Griffith has gone on to experience great successes in her song writing, with her debut single "Calling Out My Name" featuring in Netflix series Dynasty and Marvel's Runaways.

The Discovered competition also includes a WILDCARD online voting component, allowing those at home to join the Discovered journey and select two singers to perform in the semi-finals and a further two singers to perform in the grand final.

Registrations to compete in the upcoming Discovered competition heats are now open and close on Monday 13 June 2022.

Young people aged 7 to 14 years can also register for the Discovered Voices Youth Choir, taking place at the Hub Erina from now until September 2022.

To sign up for Discovered competition, join the Discovered Voices Youth Choir or learn about upcoming professional development programs visit info.centralcoast.nsw.gov.au/discovered

Discovered is supported by Central Coast music industry personalities and entities including Gina Jeffreys, Rod McCormack, Musicians Making A Difference (MMAD) and Maheraw Music Vocal Coaching.

*Central Coast Council
Media Release*

OUTLAND Mechanical & Maintenance Service
Licence No. MVRL54125 ABN 14814837840



Mobile Diesel Mechanic

- Specialising in Small Fleet Diesel Service
- Tractors • Farm Machinery • Mowers
- Earthmoving Machinery
- Welding

John: 0427 660 752 jlhellyer67@gmail.com



**Kulnura Computers
Supplies & Services**

4373 1237

- ❖ Custom Built Computer Systems for the Home - Office - Extreme Gaming
- ❖ Computer Repairs - Virus removal
- ❖ Upgrades
- ❖ Software - Accessories
- ❖ Electronic components

BUTTERFLY MAGIC

by Rhonda Hillyer ©

This is the second instalment of a serialised publication of the novel "Butterfly Magic"

CHAPTER I (part 2) THE PARTY PREPARATIONS

It was one of those sunny winter days in August which are so wonderful on the Central Coast of New South Wales and the sky was a brilliant blue and cloudless. All around the island the water reflected the bright blue colour of the sky. Soft white foam waves gently washed around the island shores, and could easily be seen from any point on the island. Although the island was occupied by many houses, there was still considerable natural bush and a spread of tall gum trees over the island which almost blocked out the sight of the houses, so much so that human habitation was not immediately obvious when approaching the island from the mainland. It was no wonder that the park was the children's favourite play area, as the bright reds and yellows which coloured the monkey bars, swings, slide and see-saw stood out against the greens, greys and browns of the bush setting. Two huge wooden tables with a long wooden stool on either side stood about twenty metres from the play area, and this was where the family began to set up the tableware.

Snowy white tablecloths went onto the tables (the affect of the white background against the kaleidoscope of colours of the tasty treats would delight the children - especially Rebecca). Brightly coloured plates filled with delicious fairy bread (slices of bread with a thin spread of butter and covered with "hundreds and thousands of multicoloured tiny sweets"), dishes filled with "smarties"

of every colour, others with caramels and chocolates wrapped in silver and gold papers, crisps and some dried fruits. Red plastic cups containing bright buttercup yellow serviettes were waiting for thirsty youngsters, next to a stack of plates, one for each guest to help himself/herself to the goodies. Dad and Da got busy with the airpump to blow up the numerous coloured balloons, which would decorate the area of the park where the party would be held. Then Mum placed gauze throwovers to cover the two tables waiting for the arrival of the guests. The esky containing the cold desserts stayed in the shade (ice cream, jellies, and the hidden surprise birthday cake), another warmer kept the "little boys" (cocktail frankfurts), small sausage rolls and party pies hot. And, not forgotten, were the tomato and barbecue sauces which would be placed in little cruet dishes to be used with the "little boys" and pastries.

Everything was ready, and Rebecca could see some of her guests beginning to arrive. Her lovely brown eyes were shining, and she seemed to be smiling all over her face. She was wearing her new khaki cargo pants and an orange t-shirt with sneakers on her feet that had been given to her by Gran'ma especially to wear today. A bright orange silk ribbon tied up her "bonnie" brown hair. Little Fred was in jeans, sneakers and a chocolate coloured t-shirt, but in her hair was a bright orange silk ribbon which matched the one Rebecca was wearing.

However, everyone had doubts as to how long the ribbon would be able to stay there, given that she would soon be running, somersaulting, rolling in the grass and swinging through the monkey bars with her usual boundless energy and skill, which would defeat most others of her age and size.

Zeb was first to arrive, and Rebecca happily greeted him as he handed her a small package done up in pink wrapping paper and tied with a blue silken ribbon. Zeb had already turned seven and was slightly taller than

Rebecca. He was also in the same class at school and they often did their homework together, which was probably a smart move on the part of Zeb as Rebecca was a very clever student. She was considerably quieter than he, and was more often than not the person who kept his mischievous behaviour at a tolerable level (in other words "kept him out of trouble").

Following Zeb were four other girls, who came from two families. They were two sets of sisters and were playmates of both Rebecca and Fred. They were cheerily wishing Rebecca a "Happy Birthday" and each of the little girls gave her a small parcel - these were square or rectangular and narrow and looked as though they could contain books and/or coloured pencils. The gifts were placed in a cardboard box near the eskies. They would be opened later.

The seven children ran to the play area of the park where the swings, slippery dip, monkey bars and see saw were. No arguments today, they were just happy to play together. Mum and Gran'ma made sure they all had drinks whenever they wanted them (and escorted them to the outdoor facility as needed).

Michael arrived with his grandfather. Mr. Cameron escorted Michael first to meet Mum and Dad, and then Mum quickly called the children over to meet Michael. At first, he was rather shy and handed Rebecca a small box covered in pink wrapping paper and tied up with a white ribbon. There was a card attached wishing her a very Happy Birthday. She thanked Michael politely, placed his gift with the others, and then the group of now eight children ran back to the swings. As they were the only two boys at the party, it was only natural that Zeb and Michael would team up together. Zeb's own mischief streak, which is typical of most boys, was still not as bad as the mischief that quickly became apparent in Michael.

Once the table and the food were organised Mum and Gran'ma settled



Bikes n Motors
Service & Repairs
All Light Vehicles
Cars & Bikes
PH: 0491 622 080
bnm@bikesnmotors.com.au
1154 George Downes Dr, Behind Jerrys'



PTY LTD
DIVERSE
TRADING AUSTRALIA
Resource Recovery | Plant Hire | Site Remediation
Roads | Shed Pads & Sites | Dams | Council Approved Clean Fill
CALL 0408 843 677
admin@diversetradingleaustralia.com.au

down with a cup of tea, and then fed Jack his morning tea. Dad and Da joined the children with some organised games to play and prizes for the best at each game. They had races, played tag, and eventually played a ball game. The new arrival, Michael, was older and bigger than the others and was able to win most of the games and the prizes.

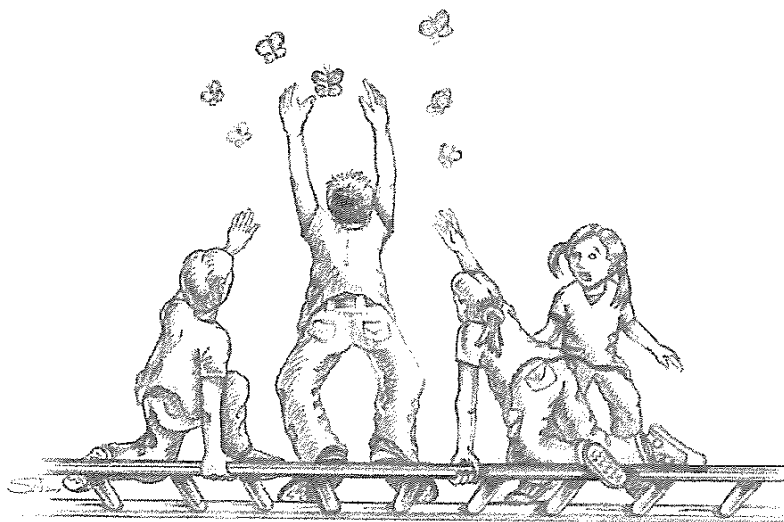
During the time that the children were playing the games, Rebecca noticed that there were quite a few butterflies coming into the park. The butterflies were very beautiful and their wings were a golden/orange colour surrounded by black with white, various shaped and sized, spots. The body at the centre of the wings was also black. She had actually been on the "look out" for fairies but, so far, nothing had happened.

When Michael noticed the butterflies, he went after them and Zeb was not far behind him. The butterflies were very adept at keeping out of the reach of both boys, and they had no luck in catching any. Rebecca called them both back, as she not only did not want them to hurt a butterfly, but was also worried that they might find a fairy, and she did not want one of them hurt either. Michael would not rejoin the games and persisted after the butterflies, however, by now, Zeb realised that Rebecca was becoming impatient and really wanted them both

to rejoin the others. He tried to persuade Michael to leave the butterflies alone. Suddenly the butterflies all headed for the monkey bars and several perched on the top. Michael ran after them and jumped up on the bars in order to get to them. When Rebecca saw this she was straight after him, Fred followed closely behind her and Zeb was just behind her, but once they reached the monkey bars Fred leaped ahead of Rebecca and reached Michael

an effort to get around Fred and stop Michael from squashing the butterfly.

Things began happening so quickly it was difficult for the onlooking adults to see what actually was taking place, but they realised something was very wrong and they were already headed for the monkey bars. The four children were all poised precariously on top of the monkey bars and seemed to be grabbing at something. Then disaster struck as all four toppled



Monkey bars

first. However, just then Michael let out a triumphant yell as he grabbed a butterfly with both his hands, which meant that he had to let go of the bar. Rebecca was sure that the butterfly would be squashed, and she made

down through the monkey bars to the ground below. Dad, Mum, Da and Gran'ma were on hand even as the children fell towards the ground.

BUT WOULD THEY BE ABLE TO SAVE THEM?

Your LOCAL GUY for:

- Fixed 4G Internet
- CCTV,
- WiFi,
- & more.




STARLINK IS HERE
WE ARE NOW INSTALLING
STARLINK INTERNET, AND
VAST TV SATELLITE
SYSTEMS.

CALL ME TO DISCUSS



Master Security License:
101264
Open Cablers License:
55883
Insured PI & PL.
Over 30 years In business.
Techniport Pty Ltd T/A
CLOUD SECURITY
Call WARREN 0407 366 444

WARD Septics

Septic Tank Cleaning

- * Small Pump Out Truck with Plumbers Jetter attached for clearing blockages in sewer pipes.
- * Truck carries water to run Jetter
- * Water Tank Cleaning

*** And Even Cheaper Rates For You With A Neighbour**

Call Paul For More Info

0438 315 514

 **SepticCleaning.com.au**

REGULAR ACTIVITIES & MEETINGS

RURAL FIRE SERVICES

Bucketty RFS	Weekend Training Station Maintenance General Meeting	3rd Sat, 9am-12 pm, breakfast 8.30am Every Thurs as required, generally 10am-1pm 3rd Sat in even months, at 1pm, All welcome buckettyrfs@gmail.com (02) 4998 8130
Calga-Mt. White RFS	General meeting	3rd Monday of the month, 7.30pm at Pacific Hwy Fire Station Mt. White
Kulnura VBFB at Greta Rd Station	General meeting Training	1st Wednesday of the month, 7.30pm 3rd Wednesday of the month 7.00pm
Mangrove Mountain RFS Bloodtree Rd	General Meeting Training / Maintenance	Last Wednesday of the month, 7 pm, All Wednesday's except last of month, 7 pm
Spencer RFS	General Meeting Training Junior Training	2nd Monday of the month Meeting 6.30pm 3rd Monday Maintenance 6:30pm 4th Monday Training 6:30pm E: captain.spencer@ccrfs.org.au Alison Wade 0415 668953. 4778 Wisemans Ferry Rd
Somersby RFS	General Meeting Training/Maintenance	First Wed of the month 7.30pm at the Station Every Wed night 7.30 at the Station (except before Wed general meeting)
Yarralong RFS	Training: Nights: Morning: Maintenance/Training : General Meeting (GM): Contact:	First Wednesday of month 7pm start Last Saturday of month 8.30am start 3rd Sunday of month 8.30am start 2nd Wed of even months 7.30pm start Ph: 0409 915060 or 0418 280 764 Email: yarralongrfs@bigpond.com

COMMUNITY & SOCIAL

Coastlink Friendship Group		Wed 9.30am-2pm at the Health Centre, Nurses Rd, Central Mangrove
Country Women's Association (Somersby)		Second Wed of each month, at Somersby Hall Wiseman's Ferry Road, Somersby, contact Sue, 43721280 or 0407768000.
Country Women's Association (Peats Ridge & District)		First Monday of the month at Community Hall, Peats Ridge School. Any enquiries please contact Christine 0419 400163.
Country Women's Association (Mangrove Mountain Evening Branch)		2nd Tues of the month at Mangrove Mountain Hall 2-4 Waratah Rd Mangrove Mtn. Start 5pm, meeting 7pm. Ph Judy 43771728
Gosford North Inner Wheel club		2nd Wed each month 7pm at Phillip House in Kariong. Contact: Glenis Ph: 0400 486 760
Gosford World Vision Community Group		4th Tues 11am in Presbyterian Church, West Gosford Contact: Glenis Ph: 0400 586 760.
Permaculture Central Coast		Third Tuesday (except Jan.) at Tuggerah CommunityHall, ANZAC Rd, 6.30pm - 9pm
Kulnura & District Garden Club		Second Monday, 9.30 for 10am start. Jacqui Maxwell 0455364262 kulnuradgc@gmail.com
Mangrove Mountain & Districts Community Group Meeting		1st Thurs of the Month, 7pm, Mangrove Mtn Hall. Danny Willmott 0407275653
Mangrove Emergency Planning & Communications Committee		Contact: mepccinc@gmail.com, 0412669649
Mangrove Mountain Country Fair Committee Meeting		2nd Thur of month except Jan, 7:30pm, Union Church Hall. Pres- Shane 0417 436 529
Mountain District Football Club Meeting		Second Tuesday of the Month 6.30pm at the Mangrove Memorial Club
River Cares for the Lower Hawkesbury River District		President Robyn Downham 0414248224 Email info@rivercares.com.au
Rotary Club Meeting		Friday 7.15am at Phillip House. 43404529
Spencer Community Progress Group Inc		President Brad Maisey, Community Meetings, 4377 1167, spencercpg2@gmail.com
Spencer Community Ladies Social Club		Last Fri of month. 12.00 noon Spencer Community Centre, Jennifer Dayes 4377 1364 Articles to: spencercpg2@gmail.com
Newsletter		Tue 9.30am-12.30pm, Kulnura Tennis Courts. Enquiries: Alison Palmer 0427731548.
The Mountain Tuesday Social Tennis Group		Every 2nd month. Check website for further details. www.somersbyequestrianclub.org.au
Somersby Equestrian Club Club & Committee Meeting		Tues & Sat, 9am-5pm. Contact: Alan Hunt 4566 4626 or Adrian Acheson 0448 833 781

SPIRITUAL

Anglican Service - Mountain Districts		Every Sun 8am at Peats Ridge Scout Hall, Sunday School during school terms
Mangrove Mountain Union Church, Christian Service		9.00am second and fourth Sundays. cnr Bloodtree Rd & Wisemans Ferry Rd
St Barnabas Non-denominational Service Yarralong		3rd Sunday each month, 11.00am. (Easter & (Christmas Carols dates to be advised)
Serbian Orthodox		2nd & 4th Sun. of the month. 10 am, followed by luncheon, tea, coffee, cakes (cost \$15). George Downes Drive, Peats Ridge
Kariong Community Baptist Church		Sun @9.30am, Church & Kid's Program, Kariong Public School Hall, Chris Clarke email revrcr@hotmail.com

(cont'd next page)

LIVESTOCK MARKET REPORT



Liveweight Sale Report 23rd May 2022

300 cattle yarded at today's sale. Numbers were reduced due to the wet weather and the quality was down on last week's sale. The trade and export market held firm.

- Vealers 500 to 742c/kg;
- Yearling steers 520 to 670c/kg;
- Yearling heifers 480 to 630c/kg;
- Grown steers & bullocks 370 to 512c/kg;
- Cows 250 to 355c/kg;
- Bulls 290c/kg.

Maitland Store Cattle Sale Report 21st May 2022

A yarding of 1280 head, up from 1000 at last sale. The quality and condition was a mixed yarding of cattle. There was a good run of store Angus cows and lightweight weaners offered. The market was good overall considering the wet season we are having in the Lower Hunter. A lot of the cattle headed out west as far as Warren and into Queensland, while a few of the locals in the hills purchased a fair few as well.

Steers:

- Weaners: 500 head; 5mths – 11mths; \$1,100 to \$2,325; Avg \$1,500; Trend +\$50; Top \$2,325
- Yearlings: 50 head; 12mths – 20mths; \$1,850 to \$2,325; Avg \$2,200; Trend +\$40; Top \$2,325
- Grown: 200 head; 2yrs – 3yrs; \$2,275; Avg \$2,275; Top \$2,275

Heifers:

- Weaners: 350 head; 5mths – 18mths; \$1,000 to \$1,830; Avg \$1,400; Trend +\$50; Top \$1,830
- PTIC: 80 head; 20mths – 3yrs; \$2,300 to \$3,250; Avg \$2,700; Trend firm; Top \$3,250

Cows:

- Cows & Calves: 130 head; 2yrs – 10yrs; \$2,200 to \$4,200; Avg \$3,100; Trend +\$100; Top \$4,200
- PTIC: 200 head; 5yrs – 10yrs; \$1,500 to \$3,000; Avg \$2,200; Trend +\$100; Top \$3,000
- Unjoined: 50 head; 5yrs – 10yrs;

\$1,000 to \$2,425; Top \$2,425

Highlights include: – A/c R & G Harris, Mulbrae sold the top priced pen of weaner steers. 11 Angus steers sold for \$2,325 to The Kennedy family of Warren; A/c Viv & Sonia Miller (herd dispersal) had a good run of Angus & Angus x Charolais & Brangus cows & calves of mixed ages. They topped the market at \$4,200 to the Humphreys Family of Dungog while the next pen of Brangus cows & calves sold for \$4,100 to Stuart Lawrence of Gresford.

Next Maitland Store Sale – Saturday 18th June 2022 – Commencing 12 noon

A friendly reminder that we are often in the area seeing clients and looking at their livestock and if you would like us to call in be sure to give us a call.

Like and share our Facebook page!

Keep up to date with [bowelidbury.com.au](http://www.bowelidbury.com.au)

Michael Easy & Rodney McDonald
Bowe & Lidbury

52 Kyle Street, Rutherford NSW 2320
P: 02 4932 7066

.:KSR.:.

**SANDSTONE
BOULDERS
ROCKS
STONES
CRUSHED
DELIVERED**

0411 868 437

REGULAR ACTIVITIES & MEETINGS (cont'd)

Divine Retreat Centre (Ph 04 6848 6782)
160 Hensons Road, Somersby
www.divineretreatcentre.org.au

Catholic Service -Spencer

- Wollombi

- Somersby

- Yarramalong

YOUTH

Junior Girl Guides 5-10

Girl Guides 10-15

Scouts, Cubs & Venturers
Peats Ridge Scout Hall

Mangrove Mountain Playgroup

HISTORICAL

Brisbane Waters Historical Society

Dharug & Lower Hawkesbury
Historical Society Inc.

First Fleeters Central Coast Chapter

The Pearl Beach Aboriginal History Group

Wyong District Museum &
Historical Society

ACTIVITY/HOBBY

Central Coast GNU/Linux Users Group
Coastal Communicators Toastmasters

Craft/scrapbooking

HALL BOOKINGS

Kulnura Hall

Mangrove Mountain Hall
Somersby Hall and Mountain Districts
Culture and Heritage Centre
Yarramalong school of Arts / Hall

Daily Holy Mass 8.00am to 8.30 am
1st Fri, 5:30pm-8:30pm Divine Mercy Friday
1st Sat, 5.30pm-9:00pm, Divine Youth
Ministry, Young Adults (18-35yrs)
Last Sun, 9am-4pm, One Day Retreat

Holy Trinity Church, 2nd Sat of the month
4pm, Contact 43771374 or 43771168 as times
may change each month.

2nd & 5th Sunday of the month, 4.30pm Mass
at St Michael the Archangel, Wollombi.
Every Sat. evening vigil – 5.30pm St. Francis
of Assisi Centre, 30 Lutana Rd, Somersby.
1st Sunday each month, 11.15am St. Barnabas
All welcome. Enq 0428 438577

Kooree Guide Cabin, every Monday in school
term, 5.00pm – 6.30pm
Kooree Guide Cabin, every Monday in school
term, 6.00pm-7.30pm

Cubs meet 6.30pm – 8.30pm Wednesdays
Scouts meet 7.00pm – 9.00pm Tuesdays
Venturers meet 7.00pm – 9.00pm Mondays
Contact 0460 696 941

Every Tues (except school holidays) 9am to
11.30am, Kooree Guide Cabin. Bec G, PH:
0421 996 029 Anne, PH: 0412 526 557
Email: becgilmour@gmail.com

25-27 Henry Kendall St., West Gosford, Ph:
4325 2270. www.henrykendallcottage.org.au
Last Sat of month. All welcome, contact Jan
Kofron 0405321478 jankofron@optusnet.com.au

2nd Sat of the month, 10.00am for 10.30,
Point Clare Hall (except Jan & Dec). Contact
Jon 43116254 and Gavin 43404435.

3rd Fri each month 7.30pm Pearl Beach.
Peggy 0411754577 [pbaboriginalhistory@
gmail.com](mailto:pbaboriginalhistory@gmail.com)

Open Sun to Thurs, 10am-2pm, other times
by appt. Contact 43521886 email [info@
alisonhomestead.com.au](mailto:info@alisonhomestead.com.au) website: [www.
alisonhomestead.com.au](http://www.alisonhomestead.com.au)

www.cclug.org.au - all most welcome

1st & 3rd Thurs of month, 6:45pm to 8:45pm
at Doyalson-Wyee RSL. Debbie 0421216952
Yarramalong Hall 4th Sun. of the month 10am
to 5.00pm cost \$12 per person ph 43561196

Hall bookings contact Annette Stackman
43561196 Committee mtg 3rd Thurs 7:00pm
at Hall- Open to all from community.

Hall bookings Ryan Howard 0405416289

Hall bookings: 0413 359 655
or AH 4373 1488

David Gillett 0416 097192
enquiries@yarramalonghall.org.au
<https://yarramalonghall.org.au>

REMINDERS FOR YOUR DIARY

Mangrove Mountain & Districts
Country Fair

Saturday October 15th, 9am – 3pm, at
Mangrove Hall and Mangrove Mountain
Recreation Reserve

Antennas - Digital

Hayward Video & Antenna Service

VAST Satellite Service
"Government approved installer"

Phone Ray Hayward

Mob: 0412 685 555

20 Sierra Crescent, Gosford East
Email: rayhay@bigpond.net.au



LIC# 227507C

ELLIS

ELECTRICAL SERVICES PTY LTD

0411 317 506

Commercial | Residential | Industrial

SAVE THE MANGROVE MOUNTAIN UNION CHURCH **HOW YOU CAN HELP**

Our goal is to "Work together as a community, to keep the Union Church safe in our community, for those who will become our community's future, as intended by those from our community's past"

We welcome your ideas and/or offers of support. Otherwise, you can help in the following ways: -

1. If you would like to contribute financially to the campaign, donations can be made to the Mangrove Mountain Christian Group Inc at Bendigo Bank, BSB 633-000, A/c 185477965.

2. Join the Mangrove Mountain Christian Group. Joining fee is \$1 and annual fees are \$2. Please contact our Secretary by email to mmcgsec1@gmail.com for an application form.

3. You can also write/email a personal letter to the Liquidator Mr Barry Taylor, Restructuring & Risk Advisory, HLB Mann Judd, Level

FOR SALE

- FOR SALE - Ring 0418 221 495
- 1) New split posts \$16 - Strainer Posts - \$150 - Used Posts \$9ea
 - 2) Spraying Copper 4 new bags @ \$100ea or \$360 lot
 - 3) Poly Pipe T's, Joiners, elbows, etc 1" up To 2" over 30 pieces New. \$200 lot
 - 4) Power Pole-8mtr Treated H/Wood-cross member & Fittings \$400
 - 5) Tiles-non slip Bath/Laundry 15 Mtr \$180 + 12mtr V-Joint Veneer Flooring-\$250
 - 6) Steel stocks- New I Beams, Gal pipes, RHS, heavy Gauge angle + more.
 - 7) Ridge Capping Roll-Top, 6 X New gal 2.8mtr \$50ea
 - 8) Electric 3ph 4 core power leads some with fittings.
 - 9) Weld Mesh 50x50mm Gal Sheets 1.8 x 1.2 - \$50ea min/defects.
 - 10) 1 X 200lt Drum sump oil for fence painting \$150.

19/207 Kent Street, SYDNEY NSW 2000 or by email to: btaylor@hlbns.com.au Please be civil and courteous to the Liquidator.

Please highlight any personal links you have with the Union Church and how important it is to yourself and the local community that the Union Church continue to operate as it has done for the past 110 years.

Also explain that there is strong community support and financial backing for the Church to continue operating and therefore it is hard to understand why the former committee chose to wind the Church up.

FOR SALE

GALE'S CITRUS - Bagged Citrus trees in various sizes available ph. 4372 1408 or mobile 0421 196 631

MULCH for sale. 10m³ Minimum - \$400.00. Delivery if applicable. David 0418 233595

DRAINAGE MATERIAL, certified crushed roof tiles. Delivery Charge only. Please phone 0438731015.

POSITIONS AVAILABLE

DELIVERY DRIVER for deliveries in local area. Up to approx 10 hours / 2 days per month. Must be reliable & punctual, have own reliable vehicle, current drivers licence and good driving record. Phone 0412 669 649

WATERMANS EXCAVATIONS is seeking a highly experienced and motivated excavator/machine operator to join our growing team.

Our requirements are as follows:

- Minimum of 5 years' experience and related certifications.
- A HR license
- Ability to work overtime, when required
- Able to work independently and meet deadlines.

To apply for this position, please email a copy of your resume to admin@watermansexcavations.com.au or call on 0431956445

A copy of your correspondence would be appreciated by either email to mmcgsec1@gmail.com or post to MMCG c/-6 Waratah Road, Mangrove Mountain NSW 2250.

Robert Meggs, President (tel – 4376 1451)

On behalf of the Mangrove Mountain Christian Group Inc.

MANGROVE PRODUCE AND HARDWARE

1668 Wisemans Ferry Rd, Central Mangrove (just 1km from the Crossroads)

**KEEP WARM THIS WINTER.
HEATERS, FIREWOOD, KINDLING
AND ACCESSORIES.
BEANIES AND SOCKS.
DOG COATS, BEDS & BLANKETS.
ALL IN STOCK NOW!**



- | | | |
|----------------|---------------|------------|
| ◆ Horse Feed | ◆ Fertiliser | ◆ Paint |
| ◆ Pet Food | ◆ Timber | ◆ Plumbing |
| ◆ Bird Seed | ◆ Hardware | ◆ Fencing |
| ◆ Vet Supplies | ◆ Hand Tools | ◆ Electric |
| ◆ Chemicals | ◆ Power Tools | Fencing |

Mon-Fri: 7:30am -5:00pm
Sat: 8:00am -2:00pm

Ph: 43731259

SHOP ONLINE AT
www.tuckersstore.com.au
or shop.truevalue.com.au

CLASSIFIED ADVERTISEMENTS

These columns will be set aside each issue for residents to advertise inexpensively and effectively in their own local paper. If you have anything you wish to sell, buy, swap, etc., ring 4374 1039 or 0412 669 649 during office hours. Rates start at \$4.00.

POSITIONS AVAILABLE

FULL TIME DIPLOMA TRAINEE Educator required for Mountain Community Children's Centre Inc. (24-month Full Time Contract) Monday to Friday.

Essential Formal Qualifications: Certificate III in Children's Services. Must be fully vaccinated against Covid-19 (3 doses). Working With Children Check Reference Number essential. First Aid Qualifications desirable. Experience with working with children under 6 years of age (in a centre based environment) preferred. Email applications mountainchildren@bigpond.com include Cover Letter and Resume. Call Louisa on 43741239 for enquiries or further information.

FACTORY WORK - Somersby Industrial Estate - Elastotec P/L

Part time work as a production operator with the potential for full time work for the right applicant. Duties include assembly and operation of production equipment with full training given. Factory provides a clean, tidy and good working environment. Some flexibility in hours worked is available. Must be reliable.

Please contact David Molesworth in the first instance: Email: david@elastotec.com.au
www.elastotec.com.au

AGISTMENT

HORSE AGISTMENT AVAILABLE. Full care. Group and individual paddocks with shelters. Full size sand dressage arena, grass jumping arena. Located walking distance to Peats Ridge Village and Café. Call Cameron on 0438695600.

FOR RENT / LEASE

LITTLE FLAT ON ACRES Carport, kitchen, bathroom, balcony, aircon, use of pool. \$140 pw. 0431087281

SERVICES AVAILABLE

RURAL FENCING - Post & rail, wire stock, chainwire, colourbond, paling etc. Also Landclearing. Phone Rick 4373 1117

HORSE RUG REPAIRS - reliable prompt service. Pick-up & drop-off available for large quantities. Ph 0405 620 394

TERMITE DAMAGE BUILDING REPAIRS

minor to major structural
Mark 0418112630

Email: CCtermite@gmail.com

8 TONNE EXCAVATOR FOR HIRE

Tilt hitch, Hydraulic grabs, Auger, Blade, Full range of buckets, Multiple other services available. L & L Kerslake. 43741678 - 0427003721

PEATS RIDGE HAIR CUTS MEN - LADIES - CHILDREN

Wed, Thu, Fri 9am-5pm. Sat 8am-1pm
Walk in - no appt necessary Ph **0447436558**

Laurie Douglass Plumbing
Plumber, Drainer, Gasfitter, Roofer -
Ph 4373 1257 Mob 0407 008 488

FENCING AND SLASHING.
Also: FIREWOOD For Sale. David Starkey.
4374 1192 or Mobile 042 725 7948

OOST Painting Contractors - Lic 71725C
Quality & cleanliness assured.
For a free quote call David 4356 1449 or
0417 234 094. Yarramalong Local

PEST CONTROL - Servicing the local area. A.T.S. Pest Control Services Phone Tony 4373 1157 Mob: 0427 731 157

PATRICIA'S HAIR CARE - 15 Woy Woy Road Kariong. Ph 02 4340 1624. Late night Tuesday. Open Tuesday Wednesday Thursday. Ladies/Men/child. Cuts/colours/perms

MISTY MOUNTAIN RURAL CONTRACTORS - Earthworks, Irrigation, all services available Ph 43530990 or 0418221495

ANTENNAS - DIGITAL - Specialists with VAST Satellite Service, extra outlets, boosters. Mobile service 4323 6367 or 0412685555

HORSE & LIVESTOCK BURIALS
www.horseburials.com.au
Ph Craig 0411 2888 12

BRICKLAYING & Render repairs. Adrian 0408347737. Lic 98665C

AIRCONDITIONING, BUILDING, CARPENTRY - Local service, 14yrs experience in aircon, 22yrs experience in building & carpentry. Call Ken 0412 842 920

ALL COVERS & CANVAS WORK!
Boats, Vehicles & Horse floats re-trimmed, cover & horse rug repairs, no job too small! Servicing the mountains & the valleys. Call Alan on 0414 993 669 or Louise on 0410 646 200. located at Yarramalong Road Wyong Creek.

TOWN 'N COUNTRY FLOOR SANDING & POLISHING

New & old floor boards, parquet, verandahs, stairs, walls ceilings, re-coating, staining & painting etc. free quote ph Stuart 0400076261

WATER BORES

**Local drilling company
based at Ourimbah**

**Contact: Paul Slade
Ph/Txt: 0408 471247**

**email:
Sladedrill@bigpond.com**



Providing the local community with a collaborative approach to multidisciplinary healthcare.

Dr Christine Wade

B.Med (Hons) FRACGP

Pathology - Douglass Hanly Moir

Ph: 43741942

Ricky Li

Mangrove Mountain Physiotherapy and Sports Injuries

Torin O' Grady

Podiatry (Foot Care)

**Now Taking Appointments
for COVID19 vaccine
call 43741252 - non-patients accepted**

40 Niclins Rd, Mangrove Mountain NSW 2250

All Allied Health Professionals are EPC accredited. Medicare rebates are available if you have a GP Management Plan with Team Care arrangements. Please enquire for more details.

Contractors Licence No: 367849C



**WATERMAN
EXCAVATIONS**
PH: 0438 617 851

Mulching Horse Arenas Certified Fill

Admin@Watermansexcavations.com.au
www.watermansexcavations.com.au

- Excavators - Tipplers - Grader - Dozer - Pozi Track - 6X6 Dump Truck

CROSSROADS AUTOMOTIVES 

Terry Kyriacou **Mon - Fri: 7:30am - 5:00pm**
Saturday: 7:30am - 12:00pm

SPARE PARTS
LOG BOOK SERVICES
MECHANICAL REPAIRS **Ph: 4373 1774**



Cnr of Wisemans Ferry Rd. & George Downes Drive, Central Mangrove

AUTHORISED INSPECTION STATION (INCL LPG)


**MLS MOUNTAIN
LANDSCAPE SUPPLIES**

SANDS SOILS MULCHES WOOD-CHIPS GRAVELS PEBBLES
PLANT NURSERY - GIFTS - FIREWOOD

DELIVERY AVAILABLE 6 DAYS A WEEK
PH: 4376 1055
988 George Downes Drive Kulnura
mls@live.com.au

 **GIWS**
GOSFORD IRRIGATION
& WATER SOLUTIONS

• AGRICULTURE • INDUSTRIAL • DOMESTIC
Licence No - 269888C
24 HOUR EMERGENCY CALLOUT SERVICE
Ph: 4322 3333 Fax: 43223433
Email: sales@girrigation.com.au
Web: www.girrigation.com.au
Unit 2 254 Manns Road, West Gosford NSW 2250

 **K&T PROPERTY CONSULTANTS PTY LTD**
Real Estate Valuers & Land Economists

ROBERT MEGGS FAPI CPV
providing independent property valuation advice, including:-

- Stamp Duty, CGT, GST & Retrospective Valuations
- Probate & Estate Valuations • Insurance Valuations
- Valuations for Family Law • Pre-Sale/Auction Advice
- Land Value & Compulsory Acquisition Valuations


500 Kyola Road Telephone (02) 4376 1451
KULNURA NSW 2250 Facsimilie (02) 4376 1452
Email: ktpropty@ozemail.com.au Mobile 0429 44 33 10

Misty Mountain *Rural Property
Development Services*




- agricultural consultants
- pasture improvement
- fertilizer spreading
- weed spraying
- all tractor work 4/2WD
- soil conditioning
- irrigation install/design
- fencing & stables
- crop planning & planting & all excavations
- concrete slabs Lic. R94321
- property evaluation & planning & management
- fork lift hire

Ex-Dept. Agriculture Officer with 45 years experience in the local district.
Greg Koutoulas is the man to call on 0418 221 495



**Stop Water
Shop**
Authorised Dealer
**ONGA, DAVEY and
GRUNDFOS PUMPS**



K. W. & M. E. WEST Pty. Ltd.
1650 Wisemans Ferry Road,
Central Mangrove
Phone 4373 1164 Fax 4373 1049

**PUMP REPAIRS
AND
SERVICE**

Trading Hours
Mon - Fri
7.30 am - 5 pm
Sat 7.30 am - 12 noon
Closed Public Holidays