

# COMMUNITY NEWS

No. 898 Ph: 4374 1039 Mo: 0412 669 649 Email: enquiries@cnews1.com.au Web: cnews1.com.au 6th May 2022

## MANGROVE MOUNTAIN UNION CHURCH 1 YEAR ON

In the April 2nd 2021 (Good Friday) issue of the Mangrove Mountain & Districts Community News, the former Committee placed a notice informing the community of the intention to sell the all the church property.

This was a bombshell that ever since, has been the ongoing source of much anguish and sadness but the community rallied to block the sale, raise over \$40,000 and continue strong support for the church and for it's retention for use by the community.

After the initial notice, the former committee held a public meeting on April 9, 2021 to explain their decision.

The community packed the church hall and were stunned and dismayed at the reasons given for the planned sale and the complete disregard for the communities offers to manage, fund and maintain the church.

A turning point came when the original 1914 Trust Deed was obtained and specialist legal advice confirmed that the Trust did not provide for the

sale of the church and any attempt to do so would require the intervention of the NSW Supreme Court.

In response to enquiries, the NSW Dept of Fair Trading informed that the committee of an Incorporated Association could work within the Incorporated Associations Act to make any changes to the committee they felt was necessary, including appointing new members. So as the community had requested, the MMUC committee could have been changed and new persons appointed, persons willing to carry on with looking after the church.

So, as another ANZAC day passes, the church which is also a registered war memorial, was left unused save for a small group that placed a wreath on a plaque that remembers the sacrifices of two local soldiers.

Note that this plaque had lain on the ground, obscured by bushes until recently mounted on a frame by a volunteer from the local community.

*Keith Aranjó*



*Memorial to William Jamieson  
and Richard Le Gray*

## Mangrove Mountain Landfill Court case

Many of you would be aware that the Land and Environment Court case between Verde Terra Pty Ltd and Central Coast Council / EPA has recently been determined.

This court case was very complex, commencing 28/10/2019 and completing 18/11/2020. Not only was the hearing spread over 12 months, it took the judge over 16 months to write up her judgement. The judgement is 136 pages in length.

Initially, we were extremely disappointed to hear that Verde Terra had won. Judge Pepper declaring that the waste operator may lawfully carry out the works that were outlined in the court order of 2014.

But...

A key issue clearly identifies that the operations at MML were for the sole purpose of establishing a regional waste facility rather than remodelling of the golf course.

Verde Terra must now apply to Council for a new DA (including an EIS) to be able to continue using the site as a regional waste facility.

Any new DA will have to meet the new guidelines for solid waste landfills that were introduced in 2016.

Central Court Council has to pay court costs. We have faith that the Council will do the right thing and demand a new DA...not make a deal with Verde Terra to avoid paying court costs.

We ask that you write to the administrator, Rik Hart and the CEO David Farmer and demand that Council asks for a new DA:

[theadministrator@centralcoast.nsw.gov.au](mailto:theadministrator@centralcoast.nsw.gov.au)

Mountain Districts Association

**STOP !**

Next issue Published  
20th May 2022

**\*\* DEADLINE \*\***

**\*\* 13th May '22 \*\***

Send adverts & copy by  
email, website or post.  
Email, website, FB or  
phone for enquiries

# Spencer and Gunderman are finally on the map!

Not only have the ravaged communities of the Lower Hawkesbury struggled to recover from the devastating floods of recent weeks, Spencer and Gunderman have had to face another hurdle - to fight to be eligible for the 'Back Home' flood grants. The announcement in early April of cash grants up to \$20,000 to flood-affected residents in 8 LGAs; 7 in the Ballina-Lismore region and one in the Hawkesbury LGA excluded the Spencer and Gunderman communities in the Central Coast LGA. Same flood, same river but the wrong side of the Hawkesbury River.

Both communities were outraged and frustrated that once again the Lower Hawkesbury River region had been forgotten and excluded from Government financial assistance during a major weather event.

It took 3 weeks of persistent lobbying not only from River Cares and Liesl Tesch MP but also by the Parliamentary Secretary for the Central Coast, Adam Crouch MP. On Thursday 21st April, the office of Adam Crouch contacted the River Cares President to announce

that two additional communities have been considered for the 'Back Home' flood grant - wait for it, Bucketty and Wisemans Ferry. The President of River Cares was livid and so was the Parliamentary Secretary! That night Adam Crouch MP went back into battle meeting with the Premier Dominic Perrottet and the Minister for Emergency Services and Resilience, Steph Cooke. Adam Crouch MP was successful and it was announced the following day that Spencer and Gunderman are now eligible for the 'Back Home' grant funding.

This means that there are at least



Flooding at Cohens Creek

20 households who can now have the financial means to repair structural damage to their properties such as replacing collapsed roofs and addressing other issues that were not acknowledged by the insurance companies.

For too long the Lower Hawkesbury River District has been forgotten, excluded, abandoned and dismissed by all three levels of Government due to the small population in this region. In the past, the communities along the Lower Hawkesbury River have been left to fend for themselves. For the first time during the March 2021 floods and in particular the recent weather event in March it was overwhelming how much support Spencer and Gunderman received. The boots on the ground throughout the entire month was phenomenal. DFES even brought over a taskforce from WA to organise all the services, including the army and airforce to help with the clean up!

On behalf of the Spencer and Gunderman communities I would like to thank Adam Crouch MP for his indomitable perseverance and determination to achieve this wonderful outcome.

Robyn Downham  
President  
River Cares

**GOSFORD DENTAL CENTRE**  
*incorporating*  
**Mangrove Mountain Dental Centre**

Shop 3, 9-12 William St. Mall, Gosford  
*This is opposite the Imperial Centre next to Kibble Park*

Dr Michael Kotis BDS Syd. Uni.

- ◆ Family dental care
- ◆ Dental emergencies
- ◆ Preventive care
- ◆ Orthodontics - teeth straightening
- ◆ Dentures
- ◆ Dental crowns & bridges
- ◆ Wisdom teeth removal
- ◆ Oral hygiene & dental care products

**4325 1710**

info@CentralCoast.Dentist

*Medicare childcare benefits bulk-billed  
Veterans affairs cardholders accepted  
We accept Dental Vouchers issued by NSW Government Health*

HICAPS available

**MANGROVE MOUNTAIN PHARMACY**

Monday – Friday: 8:30am-6pm  
Saturday: 9am-2pm Sunday: Closed

**Covid-19 Vaccines & Booster**  
Pfizer, Moderna, AstraZeneca  
including kids 5-11yo  
Now Available - Phone for Bookings

- ◆ Free webster packing and all your pharmacy needs
- ◆ Household goods and gifts
- ◆ Milk, cold drinks
- ◆ Return and Earn collection
- ◆ Parcel point outlet

3/1 Waratah Road, Mangrove Mountain, NSW 2250  
Phone: (02) 4374 1457 Fax: (02) 4374 1479  
Email: mangroventpharmacy@gmail.com

# ANGLICAN NEWS

Despite the wet weather, we have had a very busy few weeks.

Starting with Palm Sunday, Phil supplied us with fresh green palm fronds, both to decorate our church, and for Lori to make each of us a palm cross - specially constructed using only one strand of a frond.

These were blessed during the service. A special thanks to both Lori and Phil.

Next came the special day of Good Friday. After this service, The Rev Jim heated up some hot cross buns and also supplied some crucifix orchid plants for everyone, to help us to remember the Easter sacrifice.

Easter Sunday of course we celebrated the risen Christ and had the choice of many chocolate eggs, which have been said to represent the beginning of a new life or covenant.

Some of us attended the local ANZAC service up at the club on Sunday the 24th and as usual they did a terrific job, even keeping the showers of rain away.

We hope you will come along and join us at one of our Sunday services which start at 8am at Peat's Ridge

## Notice of Ongoing 1080 Baiting Program

NSW National Parks and Wildlife Service (NPWS) is conducting ongoing aerial and ground baiting programs using meat baits, meat bait products and canid pest ejectors containing 1080 (sodium fluoroacetate) poison for the control of wild dogs and foxes.

**Aerial Baiting Program: Monday 9th May 2022 – Friday 20th May 2022**

1080 poison baits will be delivered aurally from a fixed wing/rotary aircraft in the following reserves: Dharug National Park (NP), Manobalai Nature Reserve, Parr State Conservation Area (SCA), Wollemi NP, Wollemi SCA and Yengo NP.

**Ongoing Ground Baiting Program: Monday 9th May 2022 to Wednesday 9th November 2022.**

1080 poison baits will be delivered on the ground in the following reserves: Dharug National Park (NP), Manobalai Nature Reserve, Parr State Conservation Area (SCA), Wollemi NP, Wollemi SCA and Yengo NP.

The program is designed to minimise predator impacts on wildlife, especially threatened species, and to minimise impact of wild dogs on neighbouring stock.

Signs will be placed at the entry to the baiting location. Domestic pets are not permitted in NSW National Parks managed lands. Pets and working dogs may be affected (1080 is lethal to cats and dogs). Pets and working dogs must be restrained or muzzled in the vicinity and must not enter the baiting location. In the event of accidental poisoning seek immediate veterinary assistance.

Please contact the Bulga NPWS office on (02) 6574 5555 for more information.



Scout Hall, 153 George Downes Drive,  
Central Mangrove.

For enquiries – Rev Jim can be

contacted on 0407210861  
God bless,

Mountain Anglicans

### TKG

### Welding & Fabrication

- ✦ Mobile welding ✦ Fully equipped service truck
- ✦ Heavy machinery repair & modifications
  - ✦ Air arc gouging ✦ Hard facing
  - ✦ Steel horse & cattle yards
- ✦ Sheet metal work, gates and railings

**Tim Green 0427 462 717**  
timdgreen1971@gmail.com  
www.tkgweldingandfabrication.com

### Southern Diesel Services

ROAD, CIVIL AND AGRICULTURAL REPAIRS

*Workshop / Mobile 24 HRS  
Mangrove Mountain*

*Engine Control Units, Engines, Gearboxes,  
General Maintenance, Hydraulics*

**Mitchell Crane**  
**PH: 0431 095 365**

### Complete Building Repairs

- general carpentry
- structural rectifications
- excavation

call 0418 112 630

CENTRAL COAST  
TERMITE REPAIRS

### CNS Electrical

Lic No. 214132C

Your local Electrical Contractors on the mountain, specialising in Rural, Domestic, Commercial and Industrial works, including:  
Excavation, Trenching, Mains & Sub-mains, Voltage Calculations & Future Planning.

**Call Cameron for a quote on: 0438 695 600**  
Office: 02 9157 7646  
Email: admin@cnelectrical.com.au



# Farm gates to open for Harvest Festival 2022

Foodies, families and fun-seekers will flock to the Central Coast hinterland over the June long weekend for the return of one of Council's most anticipated annual events, Harvest Festival.

A celebration of the Central Coast's spectacular hinterland, Harvest Festival 2022 will offer a wide range of unique events and experiences across thirty event hubs over 11 and 12 June.

Council Director Community and Recreation Services, Melanie Smith said the festival is an opportunity to recognise our region's outstanding local produce and producers.

"This is a rare chance to take a glimpse behind the farm gate as you explore rural farming communities and their picturesque heritage villages right here on the Coast," Ms Smith said.

"Follow the Harvest Festival event trail to visit local farms, sample local produce, soak up live music and entertainment or join in a range of family-friendly activities designed to show off the unique charm of our region's hinterland.



"From paddock to plate dining experiences and wine tastings to produce picking, hands-on workshops and much more, the two-day program truly offers something for every taste and interest.

"This year, a number of event hubs are offering the opportunity to pre-book experiences in advance, so be sure to check out the event program early to ensure you don't miss out."

Council Administrator, Rik Hart said Council is proud to be delivering this much-loved event again in 2022, which attracts visitors from across the Coast and beyond to the region's hinterland communities.

"One of the Coast's most popular events amongst locals and visitors alike, Harvest Festival builds local pride, celebrates sustainability and boosts the local economy," Mr Hart

said.

"Previous events have attracted over 48,000 visitors, providing the Central Coast economy with an \$8 million boost and this year's event is anticipated to deliver similar returns to our community.

"This much-loved event is supported by the NSW Government through its tourism and major events agency, Destination NSW, and contributes to the continued growth and development of the Central Coast."

Harvest Festival Central Coast is supported by Destination NSW's Regional Flagship Events Program and will run from 11 – 12 June 2022.

To see the full calendar of events and pre-book your Harvest Festival experience, go to our Harvest Festival dedicated webpage.

*Central Coast Council  
Media Releases*



**40t All Terrain Crane  
20t Franna, Truck hire**

Now serving Mountain Districts & beyond  
*\* Free Quotes \**

**Call Alan 0456607501**

**Soul Speak Healing**



Your emotions are the window to your soul.

Soul Speak Practitioner  
&  
QHHT Practitioner Level 1  
(intern)

Sharyn Unitt  
Email: shazzaunitt@protonmail.com  
Phone: 02 4376 1014, after 2pm  
Mobile (for sms only): 0408 967 507

**Dr. S. ANANDASIVAM**  
(ANAND)  
**MBBS, FRACGP, AMCC**

For Doctor Appointments:  
Monday - Friday 9am- 5pm

*Laverty Pathology Service  
Available:  
Monday to Friday 8:00 till 3:30  
Saturday 8:30 till 12*

**Medicare Bulk Billing**

**1639 Nurses Road  
Central Mangrove, 2250  
02 4373 1914**





**MANGROVE MOUNTAIN COUNTRY FAIR 2022 CONTEMPORARY ART PRIZE**

Our Country Fair will be held on Saturday, 15th October

The Country Fair isn't for another six months, but I know that good art needs time.....so I am letting you know what the theme is for this year. Think about it and enter!!

The theme for this year's Contemporary Art Prize is:-

**“HEAL”**

This category that is linked to a set theme is growing each year, and we are always thrilled with the quality of the entries.

Entries can be any medium and we encourage diversity. Our sculptural entries have been very interesting. I look forward to our first digital or film responses!

We know that there are many local artists producing work of high standard and we encourage all of you to enter this prize to showcase our area!

Entry is free and the winner will receive a cash prize of \$200 in addition to the honour of the award.

Entries from artists over 16 years of age can be delivered to the Mangrove Mountain hall on:

- Thursday, 13th October between

*bonne fête*

**14TH MAY 2022**



**FRENCH COUNTRY MARKET**

**FROM 9AM ON THE GROUNDS OF PEATS RIDGE PUBLIC SCHOOL.**

**A FRENCH EXPERIENCE HERE ON THE COAST**

FASHION AND VINTAGE DESIGNERS/ DELIGHTFUL GIFTS  
FRESH PRODUCE & FLOWERS/ FRENCH CHEESE/  
BOUTIQUE WINES/ FRENCH STYLE FURNISHINGS & COLLECTABLES

**BROWSE TO THE GENTLE BACKGROUND OF LIVE FRENCH MUSIC**

DOGS ARE NOT ALLOWED ON SITE *merci*



 Look us up on Facebook - French Country Market

3pm and 5pm or  
• Friday, 14th October between 8am and no later than 11am

Please include a brief description of your work explaining its link to the theme.

Please contact me for further information.

Poppe  
0400105653

*Isaiah 5.20*

*Woe unto them that call evil good, and good evil; that put darkness for light, and light for darkness; that put bitter for sweet, and sweet for bitter!*

- \* Post & Rail
- \* Fence
- Painting
- \* Repairs
- \* Bobcat Hire

**Ricks Rural Fencing**

*Servicing the Mountain for over 30 Years*

**Phone Rick 43731155**

- \* Chain Wire
- \* Wire Stock
- \* All types of rural fencing

**Mangrove Mountain Plumbing**

General Plumbing, Renovations, New Homes, Pipe & Cable Locator, Gasfitting, Drainage, Blocked drains, Jet blaster, CCTV

SECOND GENERATION PLUMBER WITH OVER 28 YEARS EXPERIENCE

**Steven Zouroudis Ph: 0422302159**

Lic-183316C

# What is sovereignty?

By definition the word sovereignty means “supreme power or authority” or “self-governance”. This means that a sovereign being is a man or woman who is their own leader, as is every other person on the planet. A group of sovereign beings is a collaborative group that independently create their own self-governance under the guidance of natural law (aka universal law).

Sovereign beings determine how they live their lives and do not have a reliance on external systems or higher-up authorities like our current governments in order to provide for their basic needs. Classic examples of sovereign groups or nations would be native tribes and communities such as the Amish. It is the people themselves who manage their own systems according to their local climate, geography, survival needs and cultural/spiritual beliefs. (That’s if they are left in peace to do so.) Of course, there can also be interdependence between such communities regarding trades of goods and services.

With sovereignty also comes responsibility and accountability for one’s thoughts, words (spoken and written), beliefs and actions. For convenience I will group these into spiritual, emotional and physical.

Spiritual responsibilities could include following your own inner guidance/wisdom (intuition) instead of giving your power away to other entities/groups to guide you. In other words, are YOU in control of your destiny, or are you letting others do it for you, eg. governments of all levels, health authorities, celebrities, school teachers, church leaders, parents/siblings, partners, children or friends? Do you ever question authority? Do you ever partake in your own research and come to your own conclusions?

Does your existence depend on the function of external systems around you (including financial)?

Emotional responsibilities could include the way you treat others (“do as you would do unto yourself”) and choosing to refrain from reacting out of a negative mindset, “sleeping on it” and responding from a more positive mindset at a later time. Another one is whether you are reacting due to unhealed wounds (called triggers) within yourself or blaming the other person as if it is their fault. This is called victim-blaming. And lastly but not least is whether you are projecting your own fears and insecurities onto others rather than doing the “soul searching” to understand why you feel the way you do, and taking action to work on this aspect of yourself than to take it out on others. Assertiveness techniques are also valuable (stating your needs whilst respecting the other).

Physical responsibilities could include having an understanding of what toxins are in your environment, food (GMO’s) and water, and ways to avoid being affected by these (and to detox from such), including animals under your care. It includes replacing toxic cleaning agents with alternative non-toxic agents like vinegars and bicarb soda. Another would be protecting against EMF’s (electromagnetic frequencies) which are harmful to the human body. Crystals such as orgonite and obsidian and can be useful for this, as can silver impregnated items. Using a non-fluoride toothpaste to prevent fluoride poisoning and seeking out naturally occurring medicinal agents rather than pharmaceutical agents. Getting outside for sunshine and being out in nature is a must for an improved immune system and to soothe the mind and soul. And choosing actions that respect mother Earth – look after her and she looks after you!

When one has an awareness of the way their thoughts, beliefs and

## CENTRAL COAST BUNDLED INTO SYDNEY MEGA REGION

Greater Cities Commission Bill 2022 has come into force, replacing the Greater Sydney Commission Act 2015

Greater Cities Commission will bring the cities of the Lower Hunter and Greater Newcastle, Central Coast, Greater Sydney and Illawarra-Shoalhaven together under an umbrella structure that oversees planning and development.

The Commission, amongst other functions, is to provide advice and make recommendations to the Minister on matters relating to land use, infrastructure, planning or

actions have on the world around them, and makes internal/external changes to leave a positive imprint on the world an amazing shift can happen which can bring a sense of inner peace and abundance back to them, improving their mind, body and soul connection. And when this can be achieved collectively our world could be unrecognizable from what it is today. Each day we get a step closer to reaching that goal, and every soul in this realm has a part to play, no matter how big or small that part is.

Please contact me at shazzaunitt@protonmail.com with any enquiries about booking a Soul Speak Healing session (no hypnosis, 2 hrs approx.) or QHHT session (interview/hypnosis, min 4hrs). I still presently have 10 approx. free QHHT sessions available.

*Sharyn Unitt, Soul Speak Healer and QHHT Practitioner Level 1 (intern)*



**FIREWOOD**

Seasoned local firewood cut, dried and ready for delivery.

**Paul – 0437 006 060**

[Mountain.Firewood19@gmail.com](mailto:Mountain.Firewood19@gmail.com) [Mountain Firewood](https://www.facebook.com/MountainFirewood)

## The Grass Cutters

- Slashing
- Rock picking
- Farm cleaning and clearing
- Cultivation and more
- Obligation-free quotes



Call **0419 412 993**  
Email [pat@thegrasscuttersrus.com](mailto:pat@thegrasscuttersrus.com)

**See us in action at: [thegrasscuttersrus.com](http://thegrasscuttersrus.com)**

development in the Six Cities Region.  
The principal objectives of the Commission in exercising its functions are as follows -

- (a) to lead metropolitan planning for the Six Cities Region,
- (b) to promote orderly development in the Six Cities Region, integrating social, economic and environmental considerations with regard to the principles of ecologically sustainable development contained in the Protection of the Environment Administration Act 1991, section 6(2),
- (c) to promote the alignment of Government decision-making on infrastructure with land use planning,
- (d) to promote the supply of housing, including affordable housing and a diversity of housing types,
- (e) to encourage development that is resilient, including resilient in relation to climate change, and development that takes into account natural hazards,
- (f) to support ongoing improvement in productivity, liveability and environmental quality,
- (g) to provide increased opportunity for public involvement and participation in environmental planning and assessment in the Six Cities Region, including the involvement and participation of First Nations peoples,
- (h) to promote economic activity



in the Six Cities Region by coordinating the delivery of key economic precincts.

The Central Coast Regional Plan 2036 which was released in 2016 continues to have effect until the Greater Cities Commission draft plans are completed.

The Act requires that the Commission must review the existing regional strategic plans and submit a draft regional strategic plan applying to the whole of the Six Cities Region to the Minister, before the end of 2023.

There is potential for great benefits for residents of all the cities involved but there is also a potential that lobby groups and developers could hijack the processes for less than ideal outcomes.

Will Sydney's overcrowding, traffic snarls and hectic lifestyles push into the Central Coast?

Geoff Roberts AM, Chief Commissioner said "This will mean more people in the six cities working within 30 minutes of where they live, increased access to homes that families can afford and more equal access to higher education and training opportunities"

Check the website: <https://www.greater.sydney/>

Keith Aranjó

# Big Jims Lawn Mowing

**Property Maintenance**  
 **Specialising in Air BnB**

**James Morgan**  
**0405 178 197**

**Absoloot Septic**

**For all things septic, including pump outs, call us today**

Your local certified AWTs septic agents  
Website – [www.absolootseptic.com.au](http://www.absolootseptic.com.au)  
**Phone 02 4362 1060**

## JOHN DRAPER & SON

### ELECTRICAL CONTRACTORS

Licence No. 65229C

Commercial, Industrial, Domestic, Rural Installation

*Serving the Mountain and Districts for over 50 years*

For prompt service and quotes

**Peter: 43761141, Mobile 0428 732 623**  
**John: 4376 1346, Mobile 0427 106 859**



# Kulnura & District Garden Club May 2022

As was the case for many events on the Central Coast in April, our planned visit to Sid and Pam's was unable to go ahead due to the heavy rainfall, but we were able to meet in the Somersby Hall. This was a lively meeting and reminded us that we don't always have to meet in an actual garden for it to be a wonderful day out. It was a morning filled with laughter and learning, and lots of cake!

Whilst we missed meeting the alpacas in person, Pam brought several gorgeous examples of the fleeces she has spun and garments she has made using alpaca, silk, and camel fibres. We were able to squish the camel wool and marvel at how soft and luxurious it feels. Pam explained how she prepares the fleece for spinning and we were in awe of her patience and skill. Sid showed us cuttings of his favourite plants, so it almost felt like we were still walking around their lovely garden.

Our resident comedian / gardener Dave from Dooralong had us chuckling with his wicked humour, and his story of how he went from being terrified of bees to now producing 40kg of honey from his own hive. We were treated to a tour of his garden via cuttings that showed the diversity of what can be grown in our district. We got to taste a cherry guava, identify the scents of different types of basil, and learn why sometimes carrots just don't look like carrots. Dave also brought along his hand-made sourdough crackers and quince paste which, paired with cheddar cheese, went down a treat for morning tea.

Amanda shared an impressive display of plants that she has grown from cuttings and gave us a fascinating presentation on how to propagate cuttings in water from popular plants such as pothos (devils ivy), philodendrons, hoya, cordyline, dracaena and succulents. As well as donating a stunning plant for the raffle prize, Amanda also generously gave away her healthy cuttings, so there are now numerous indoor plant babies growing their new roots in members' homes.

Jackie demonstrated a handy product called Selleys Knead It Aqua for sealing and waterproofing pots, and there were many smiling faces when the winners of the plant

competition were announced, and the raffle drawn.

We finished with a quiz that proved just how knowledgeable our members are - they got every question right! Did you know that a worm has multiple hearts?

The weather over the Easter break has been glorious and almost made up for the wet weeks prior. May is a perfect month to:

- Make compost – gather all the falling leaves and get your compost pile started
- Transplant any azaleas, gardenias, or small shrubs and conifers
- Plant bulbs
- Sow broad beans, broccoli, onions, peas, radishes, shallots, and spinach, alyssum, ageratum, aquilegia, calendula, canterbury bells, cineraria, cornflower, delphinium, dianthus, everlasting daisy, foxglove, hollyhock, lunaria, lobelia, nemesia, nigella, pansy, poppy, primula, snapdragon, stock, sweet-pea, viola
- Feed flowering and fruiting plants
- Create an outdoor fire-pit area in preparation for crisp winter nights under the stars

Book of the month: Wendy Whitely and The Secret Garden – Janet Hawley

## ESCAPE THE RAT RACE

257 Buralong Valley Road, Murrays Run NSW  
2 Bed 1 Bath 3 Car \$729,000

This charming country style home is situated on an idyllic approx. 4 acre parcel of land within a peaceful community away from the hustle and bustle of modern life. Nestled in a valley with picturesque bushland behind, this home overlooks cleared undulating paddocks suitable for horses surrounded by treelined hills and lush pastures.

Part of an exclusive enclave of landholders all owning individual torrens title lots with access and shared ownership of over 600 acres of communal property. This includes 2 tennis courts, inground salt water pool with amenities block, fully equipped kitchen and community centre in a former dairy. There are also acres of horse and walking trails

Features of the home include:

- Full length under cover verandah to sit and enjoy the peace and quiet
- Various renovations over the last few years including modern bathroom
- Slow combustion heater and ceiling fan in lounge



- Under house parking
- 2 bedrooms including generous master bedroom
- Built ins and ceiling fans in both bedrooms
- Surrounded by pristine bushland and magnificent rock formations

Please call Ourimbah Real Estate 4362 1630

OURIMBAH  
REAL ESTATE



enquiries@ourimbahrealestate.com.au  
www.ourimbahrealestate.com.au  
**ph: 4362 1630**  
33 Pacific Highway, Ourimbah NSW 2258

If you haven't visited Wendy Whitely's Secret Garden in Lavender Bay, then turning the pages of this beautiful book will give you a sense of why this one of the worst kept secrets in Sydney. I really loved reading Wendy's story of how this garden was created from grief and loss, transformed into a legacy of respite and beauty for so many to enjoy. You can discover more here: <https://www.wendyssecretgarden.org.au/>

May Meeting:  
We meet on the second Monday of



Above: Amanda and her healthy plants  
Right: Pam and her fabulous yarn

# Big Flower

Pots Statues Fountains

Plants Flowers Gifts

## SUPER NURSERY

**24 Burns Road, Ourimbah 2258**  
*beside M1 Interchange*

**02 4362 2236**  
*c.boes@hotmail.com*  
[www.bigflower.com.au](http://www.bigflower.com.au)

The Biggest Nursery on the Central Coast - 10 Acres!

Open 6 days Tue to Sun 9am till 5pm Closed Mondays



each month at 9:30am for a 10am start. Our next meeting will be on Monday May 9 at Trish Flannery's home at Mangrove Mountain. We'd love you to join us, so please contact us for directions.

Guests are always welcome.

Please email [kulnuradgc@gmail.com](mailto:kulnuradgc@gmail.com) for information about meetings, membership, or any other questions, or feel free to call Jacqui on 0455 364 262

Happy gardening!  
Karynne Courts (KDGC Committee member, 2022)

### On The Go Constructions Pty Ltd

Specializing in the building of chicken sheds

Charlie Muscat is well known in the Industry, with over 12 years experience and has a reputation for quality workmanship.

- \* New Chicken Sheds \* Tunnel Conversions \* Roofing
- \* Machinery/Farm Sheds/Stables/Lofts/Piggeries \* Coolrooms
- \* All Fabricating services - All frames & trusses are fabricated by On The Go Constructions to Engineer specifications.

Call Charlie on 4374 1114 or 0408 684 719

## VISION FOR LIFE...

For all your concrete & pumping services, call Louis on 0418 409 576

## ALL ASPECTS OF TREE WORK

- Truck & Chipper
- Cherry Picker
- Excavator

Local Arborist, friendly & experienced team.  
Insured and certified.  
Tree removals, pruning, emergency work.

Tim - 0412 985 422 or [tijanotreco@gmail.com](mailto:tijanotreco@gmail.com)

CUSTOM DESIGN | BUILDINGS | EXTENSIONS | ALTERATIONS | DECKS |

CONSTRUCTION

0410 100 616 | [kim@kdfconstruction.com.au](mailto:kim@kdfconstruction.com.au) | LIC NO. 267735C

## HERFO'S WOODSHED

### QUALITY SEASONED FIREWOOD

Cut & split vintage Ironbark  
Sold via National Measurements Act  
Registered Public Weighbridge

More heat for your dollar

Weight ticket with each delivery

call to order:  
**4373 1316**

[www.herfoswoodshed.com.au](http://www.herfoswoodshed.com.au)



# Somersby CWA

Our ladies have been very busy crafting ready for the up coming Harvest Festival and the Country Fair. Ladies are also ready to attend the NSW CWA conference with this being the 100th year.

It should be a special conference, and a fun week with lots of other ladies. Our Wednesday craft morning's are very popular with more laughter than craft, feel free to pop in and join the fun any time from 10am.

It was very nice to be able to support our local Service Men at the Mangrove ANZAC March on Sunday 24th, thanks to Wendy and Elizabeth who laid a wreath on behalf of our Branch.

*Sue Ward, Publicity Officer*



the springs *Mother's Day at The Springs*  
Sunday 8th May 2022

Join us this  
Mother's Day  
for High Tea  
Adults - \$59pp  
Children - \$25pp

For Bookings please contact us on 4373 1522 Ext 3  
or email [admin@the-springs.com.au](mailto:admin@the-springs.com.au)

Instagram: [thespringspeatsridge](https://www.instagram.com/thespringspeatsridge)  
Facebook: [the-springscentralcoast](https://www.facebook.com/the-springscentralcoast)

[www.thesprings.com.au](http://www.thesprings.com.au)  
1080 Peats Ridge Road, Peats Ridge, NSW, 2250



## RURAL INSURANCES

If you're in need of assistance with your insurances give Shortland Insurance Brokers a call!

**4324 5244**  
[info@shortlandinsurance.com](mailto:info@shortlandinsurance.com)  
Level 2, 27 Dane Drive GOSFORD

Quote the codeword: **"MOUNTAIN"** for special offer

## DJF HAULAGE

- Sand • Soil • Gravel • Road Base
- Chicken Manure Supply and Shed Cleanouts • Bulk Deliveries
- B-Double Prime Mover • Truck and Dog
- Bogie Rigid-Tipper • Bogie Rigid-Tautliner • Semi-Tipper
- 45ft Flat-top, Stepdeck & Tautliner

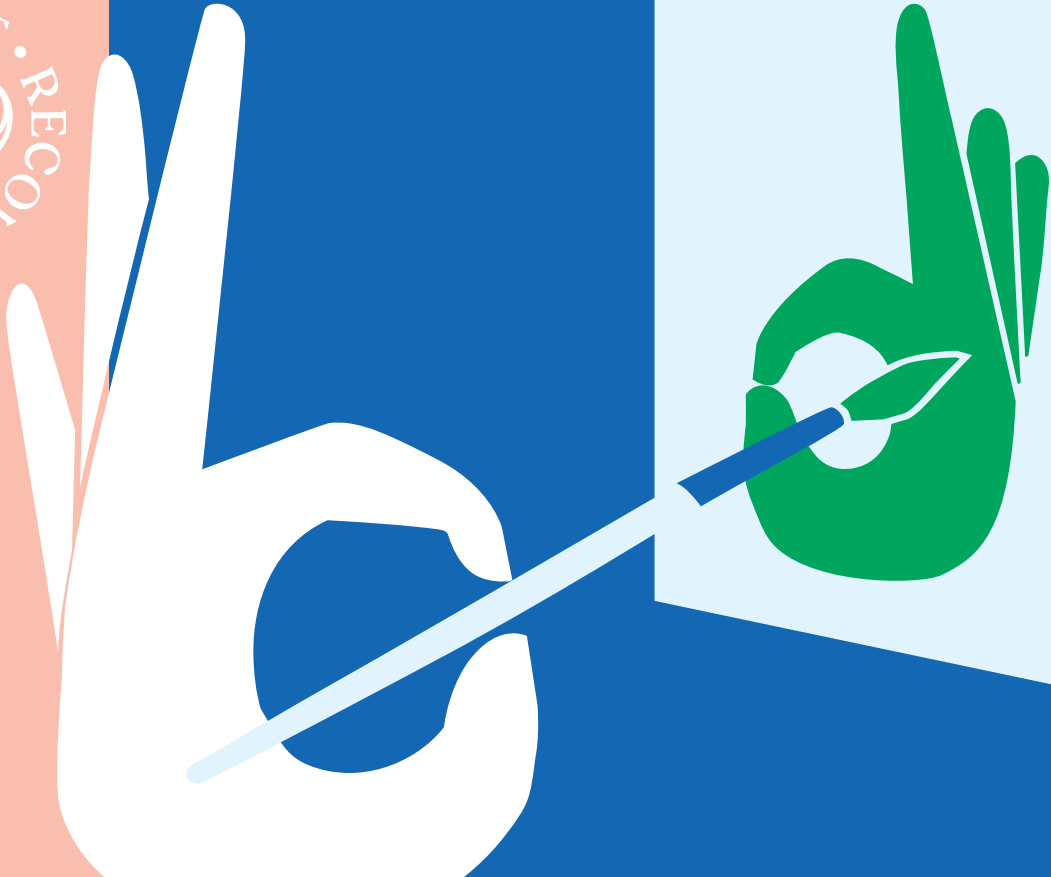
**Dallas J. Fabian**  
**0417-285-047**  
[dallas@djfhaulage.com](mailto:dallas@djfhaulage.com)

**PICKUP OR DELIVERY**

A Full Range of Oils, Lubricants & Workshop Consumables.  
PLUS - Bulk Cleaning Products for the Home & Workshop.  
PLUS - The Must Have Camping Accessories!

**U6, 17 CRAFTSMAN AVE, BERKELEY VALE**  
**Ph:(02)43885911 OPEN: 8.30AM - 5 PM**  
[www.coastandvalleyoil.com.au](http://www.coastandvalleyoil.com.au)





*Free*  
**WORK-  
SHOP  
SERIES**



Creative Recovery Workshops are guided activities where you will explore art processes such as writing, drawing and sculpture with an artist. Taking inspiration from the natural environment, the purpose of each class is for you to become more connected to your community.

**What kind of person should come along?**

All are welcome—especially if you have guts and honesty, or if you're vulnerable and gentle, or if you want to connect with others... then this is for you!

**SPENCER**

Monday 23 & 30 May  
1–4.30pm  
The Heritage Duck  
4685 Wisemans Ferry Rd

**YARRAMALONG**

Tuesday 24 & 31 May  
9.30am–1pm  
Yarramalong Hall  
1640 Yarramalong Rd

**MANGROVE MTN**

Tuesday 24 & 31 May  
2–5pm  
Mangrove Mountain Hall  
Wisemans Ferry Rd

**Bookings Essential**

Please call Breanna Pollock 0419 014 446  
or email: [breanna.pollock@centralcoast.nsw.gov.au](mailto:breanna.pollock@centralcoast.nsw.gov.au)

**Free entry, snacks and materials provided.**



Presented by  
Central Coast Council



Australian Government

Jointly funded by the Commonwealth and  
the NSW State Government under the  
Disaster Recovery Funding Arrangements



## “HIGHFIELDS” - Jilliby - 10 Dicksons Road

4 2 4 4.74 acres

It is a rare occasion that such a unique property presents itself in arguably one of Jilliby Valley's finest locations. Its stunning outlook will leave you breathless.

Sitting on 4.74 sundrenched acres, the offering of 10 Dicksons Road is the chance to own a magnificent country estate and escape the hustle and bustle of city life.

Hidden behind a treelined driveway, in an elevated position sits a luxurious 4-bedroom home. The properties design is full of class & modern luxuries but stays true to its country homestead origins with subtle touches such as sliding barn doors & a magnificent timber deck.

The homes layout is centred around its open plan living spaces, which gives the home a spacious feel. The dining room opens to the large timber deck, which not only floods the home with natural light, but integrates an indoor/outdoor lifestyle. The luxury continues to the two stunning bathrooms, both featuring underfloor heating, floor to ceiling tiles, a freestanding bath in the main & a his and her shower in the en-suite.

The outdoor facilities are just as impressive as the home. Currently set up for the horse lover, its facilities include 3 open paddocks, round yard, riding arena and stables. There is also a large machinery shed for storage.

A bonus feature is the one-bedroom studio separate from the house, with its own kitchenette & bathroom. This presents the perfect opportunity for a teenager's retreat, in law accommodation or potential for Airbnb.

The true highlight of this property is the extraordinary view, which is unmatched in the valley. Whether sitting with a cold one on the deck, or horseback riding through the paddocks, you can soak in this postcard location all over.

Enjoy the peacefulness of the location while remaining 5 minutes to major shopping centres & freeway entries. With a great choice of quality local public & private schools a short distance away, this makes for the perfect family home. Conveniently situated a short 50-minute commute from Sydney's North Shore, this property also makes for an ideal weekender. It truly is a once in a lifetime offering and must be inspected.

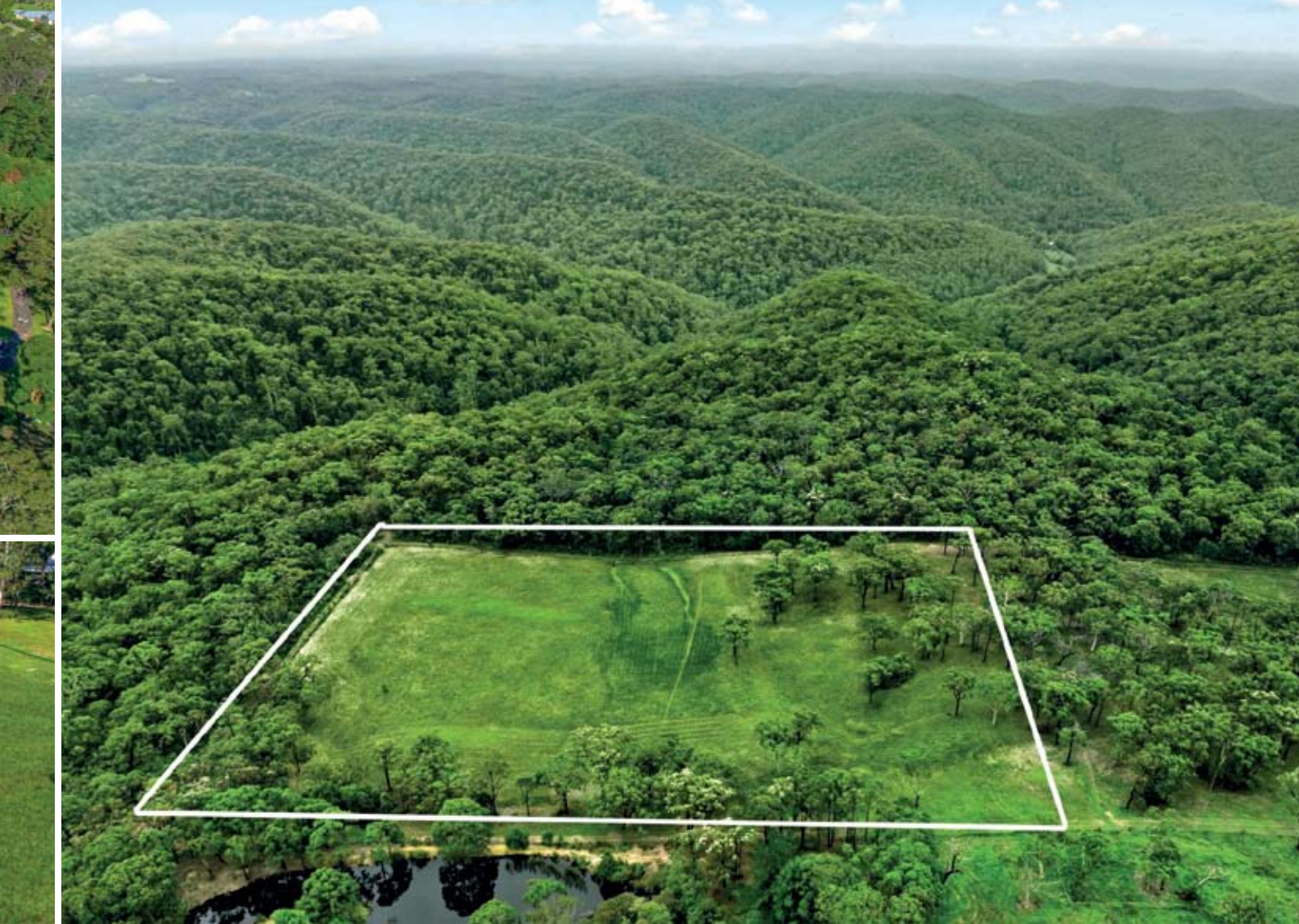
You

Stone Real

Scott Wall

stonerealestate.





## SERENE LIFESTYLE

Kulnura - Lot 1571 Hunts Road

12.56 acres

A rare opportunity presents itself with the listing of this beautiful block located in a serene and picturesque part of the Central Coast Hinterland. Hidden away in a natural bush setting, this prime parcel of land is the ultimate spot to build your dream home. Featuring 12.56 sun-drenched acres, the majority of which are cleared, the possibilities are endless. With multiple building sites, a gorgeous outlook and zoned Rural allowing for extensive agriculture and home businesses, there is unlimited potential.

Escape the confinements of residential life without sacrificing location. You are in a prime position being 25 minutes from major shopping centres or 5 minutes from local utilities, as well as being just over an hour from Sydney. This slice of private paradise won't last long so please register your interest.

# our leaders in lifestyle property.

Estate Wyong. Servicing the Central Coast.

0413 965 616 **Shaun Coffey** 0417 400 556

com.au





# Free Community Workshops at Kawalang!

Free workshops for Bucketty, Laguna, Fernances Crossing, Buralong, Will O'Wynn, Upper Yengo and nearby communities.



## Healthy Cooking!

Sunday, May 29, 10am-2pm

Chef Nathan Cooper believes that making healthier food choices can help us shift to a healthier, plant-based diet. Nathan will show us simple tools for cooking food nutritionally, demonstrate how sustainably grown and prepared food can restore our health and wellbeing, and improve our planet's health one meal at a time.

Register: <https://events.humanitix.com/healthy-cooking-with-chef-nathan-cooper>

## Growing a Garden in the Bush!

Sunday, June 19, 10am-2pm



**OPEN 7 DAYS**  
**40 YEARS LOCAL**



General Dentistry | Emergency Care | Cosmetic Dentistry  
Orthodontics & Invisalign | Dental Implants | Oral Surgery  
Sleep Dentistry IV Sedation | Wisdom Teeth Removal  
3D CT Scanning | CEREC same-day ceramic restorations

02 4323 1933 | [www.vcdental.com.au](http://www.vcdental.com.au)

Suite 10, 36-40 Victoria Street, East Gosford NSW 2250

### NEW PATIENTS

> Comprehensive checkup & clean  
Includes up to 5 x-rays  
**No Gap** (with health insurance) or \$290

### OFFERS (all patients)

> Free orthodontic consultation  
> Free dental implant consultation  
> Free cosmetic makeover consultation  
> Sport mouthguards: **No Gap** or \$99

### FINANCE

> We bulk bill the Medicare CDBS  
> Zip Pay & Zip Money payment plans  
> We partner with SuperCare



Keith Goodwill knows the challenges of growing food in the bush...water, soil, sunlight, wildlife and grubs. He comes from a family of

six children that grew their food on a property outside of Melbourne. Join Keith in a discussion of how to grow food organically in your own backyard and enjoy healthy, homegrown food.

Register: <https://events.humanitix.com/freecommunity-workshop-at-kawalang-growing-agarden-in-the-bush>

Registration required for all workshops. RSVP early as space is limited.

<https://www.kawalang.com>  
Kawalang, Murrays Run



## Services:

- Site Levelling
- Land Clearing
- Horse Arenas
- Roadways
- Certified Fill Material

## Machines:

- Excavators / Augers
- Posi Track with Laser Level Grader
- Dozer
- Truck & Trailer Tipper

**Michael Schembri**  
**0419 236 788**

Follow us  



AGRICULTURE • COMMERCIAL • RURAL • INDUSTRIAL

Australia's Leading Water Solutions Network

- ◆ Water Treatment
- ◆ Pump Systems
- ◆ Irrigation Systems
- ◆ Fertigation
- ◆ Mowers & Ride-Ons
- ◆ Pipes & Fittings
- ◆ Fire Protection Systems
- ◆ Chainsaws & Generators
- ◆ Water Tanks
- ◆ Repairs

**Ph 4373 1466**  
780 Peats Ridge Road, Peats Ridge

[www.thinkwaterpeatsridge.com.au](http://www.thinkwaterpeatsridge.com.au)





CENTRAL COAST  
**SELECT**  
PROPERTIES

**FOR SALE**



Contact agent for price

**206 Konda Road, Somersby**

	3
	1
	10
	65.6 ac

### Private, Pristine and Peaceful

Nestled at the end of a quiet country lane, this is the one that you have been waiting for!

Offering a high degree of privacy and serenity, combined with gently sloping, mostly cleared land and a bountiful water supply, each of those a hot commodity in the acreage market.

At 65 acres and with RU1 zoning, this is the first time a substantially sized, useable acreage has come on the market in Somersby in almost 4 years.

Somersby itself is highly sought after for its acreage lifestyle, close proximity to amenities, elevated position and famous loamy soil.

This property has stunning water availability, with 5 large dams fed from spring flow on the property.

Currently operated as a small scale Macadamia farm, this property is ready and waiting for you to move straight in and enjoy, or use as the ultimate canvas on which to develop your rural paradise.

There is a comfortable and beautifully maintained double brick residence, with views across the dams and to the distant west.

At the heart of the property is a three sided, north facing machinery and nut processing shed. At 17.5m x 12m, there is plenty of space for storage of farming equipment.

**Come and see it for yourself! Contact Tony Gilmour 0400 723 193 or Kate Kerslake 0427 233 090 to arrange your private inspection.**

#### Office Address:

Suite 1,  
2/872 Pacific Highway  
Lisarow NSW 2250

P: (02) 4324 8486

E: info@ccselect.com.au

Contact one of our agents | CALL 02 4324 8486



[www.ccselect.com.au](http://www.ccselect.com.au)

CENTRAL COAST  
**SELECT**  
PROPERTIES





# ARTS NEWS

WVAC warmly invites you to  
**'SEEN...REMEMBERED'**

An exhibition of oil, watercolour and drawn works by Sheree Roberts and Christine Munce.

You are invited to attend the exhibition opening on Saturday 7th May, 2pm - 4pm. Drinks and light refreshments will be served. All welcome.

7 - 22 MAY

Open 10am - 3pm

Fridays, Saturdays & Sundays

Old Fireshed Gallery

Wollombi Cultural Centre

### SHEREE ROBERTS

Sheree was born in Cessnock and has taught Visual Art for thirty five years. She works in oils, acrylic and mixed media.

"I walk in the bush every day. I paint what I see, the places I discover, small and large, things I remember and imagine. 'Look at life with the eyes of a child' - Matisse."



Sheree Roberts - 'Turning wheels, big holes and dram lines'



Sheree Roberts - 'Of things we find magical'

### CHRISTINE MUNCE

Christine is a graduate of the National Art School and has been teaching Visual Arts for thirty five years. Christine moved permanently to Pokolbin in the Hunter Valley NSW four years ago.

"The discarded: A thing rejected as no longer desired, needed or useful. These things that nature or human throws away and lets fall onto the ground, have become a constant interest in my watercolour painting and art making practice, which develops from photographs which I take as I walk urban city streets, meander



Christine Munce - 'Walk in Pokolbin'

rural trails and country lanes and simply stroll suburban pathways. A pen drawing emerges and watercolour paint develops and enhances the beauty of newly arranged discards. I draw and paint on large A2 papers down to A5 collages on canvas boards. Look down. What is discarded becomes an object of beauty in another place."

Wollombi Valley Arts Council

## WANTED!

### Old or Unwanted Ride-on Mowers & Quad bikes

I am willing to buy that mower that you just dont need anymore and is filling up your shed!

Contact James Morgan on **0405 178 197**



## SIGNS

Lynwood Press

Your local printing service



All types of SIGNAGE...

~ Flexible Banners, Self Adhesive Vinyl

~ Aluply, Coreflute, Outdoor & Indoor

Ph/Fax: 4374 1039 Mob: 0412 669 649  
Email: enquiries@cnews1.com.au

## Kulnura Computers Supplies & Services

4373 1237

- ❖ Custom Built Computer Systems for the Home - Office - Extreme Gaming
- ❖ Computer Repairs - Virus removal
- ❖ Upgrades
- ❖ Software - Accessories
- ❖ Electronic components



## Grant Writing Workshops

To support community groups or individuals build skills and confidence in applying for grant funding to deliver their worthwhile projects, events, or initiatives for the community, Council is running a series of free workshops in May and June.

A series of drop-in sessions, information sessions and workshops will be offered online via zoom and in person at Erina Centre, Erina Fair and at Council's Wyong Administration Building.

The annual 'Community Events and Place Activation' and 'Community Development' Grant Programs will open 1 June 2022 with \$300,000 per program available, to support local community groups and organisations to deliver worthwhile projects, programs and events. These programs are only open once during the 2022/23 financial year.

The Community Support Program remains open for applications throughout the year with \$300,000 available.


Council Director Community and Recreation Services, Melanie Smith

said the sessions are designed to help applicants better understand the process, improve the quality of their applications, and help bring their big ideas to life over the next 18 months.

"Council is offering accessible information sessions, drop-in sessions, and grant writing workshops".

To register for the drop-in sessions, information sessions and workshops, visit [www.centralcoast.nsw.gov.au/grants](http://www.centralcoast.nsw.gov.au/grants).

For more information on the 2022-23 Community Grants Program, search 'Community Grants Program' at [centralcoast.nsw.gov.au](http://centralcoast.nsw.gov.au)




**EBH**  
BUILDING GROUP  
PTY LTD

**OUR SERVICES INCLUDE:**

- Custom built homes • Granny flats
- Extensions • Carpentry services
- Renovations • Decks & Pergolas
- Waterproofing & Bathroom renovations
- Disabled modifications
- Asbestos removal
- Building maintenance

**Dane Meredith | Builder**  
0243513200  
0420906499  
[dane@ebhbuilding.com.au](mailto:dane@ebhbuilding.com.au)



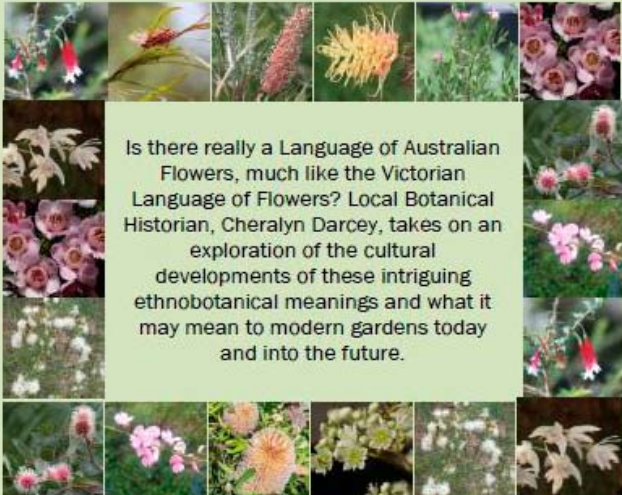
**Australian Plants Society**  
Central Coast

## May meeting

presents

## Cheralyn Darcey

Author, radio presenter, gardener and botanical historian



Is there really a Language of Australian Flowers, much like the Victorian Language of Flowers? Local Botanical Historian, Cheralyn Darcey, takes on an exploration of the cultural developments of these intriguing ethnobotanical meanings and what it may mean to modern gardens today and into the future.

**When**

1.30 for 2.00 pm start  
Saturday, 14<sup>th</sup> May 2022

**Where**

Phillip House  
21 Old Mt Penang Road  
Kariong

**Cost**

\$3 Members & Visitors (with lucky door prize)  
Plants will be available to purchase.

Enquiries to Pat Carlton, 43000809

APS-CC and Phillip House follow standard COVID safe practices



**Bikes n Motors**

**Service & Repairs**  
**All Light Vehicles**  
**Cars & Bikes**

**PH: 0491 622 080**  
[bnm@bikesnmotors.com.au](mailto:bnm@bikesnmotors.com.au)  
1154 George Downes Dr, Behind Jerrys'



PTY LTD  
**DIVERSE**  
TRADING AUSTRALIA

Resource Recovery | Plant Hire | Site Remediation

Roads | Shed Pads & Sites | Dams | Council Approved Clean Fill

**CALL 0408 843 677**  
[admin@diversetradingleustralia.com.au](mailto:admin@diversetradingleustralia.com.au)

# River Cares President's Report

Welcome Everyone to River Cares first AGM and thank you for being here today.

Firstly I would like to say over these past few horrendous weeks our wonderful Community have stepped up, rallied together and looked after each other. A huge thank you to Jane McCallum for her herculean work feeding the emergence services and attending to their needs and answering questions, receiving and distributing care packages, portable generators and all the other ad hoc duties associated with this recent weather event.

Let's go back to why and when River Cares was formed.

The fires & floods of 2019/2020 identified needs of the community. This gave the impetus for Jane and I to investigate what services are available to develop community resilience independent of the RFS, Emergency Services or Central Coast Council (CCC). We needed a platform to tap into all 3 levels of government funding to improve infrastructure & provide the support for our community.

In July 2020, a group of pro-active like-minded individuals came together to form a new Community group, "River Cares", whose focus is to improve Community infrastructure, build resilience, strengthen Community cohesion & provide the right type of support to all of the Communities & visitors of the Lower Hawkesbury River District.

## What is our vision?

To enhance the safety & wellbeing of the people, the heritage, the environment & local businesses of the

Lower Hawkesbury River District.

## Our Achievements:-

In 2020:-

- CCC invited me to participate in a Podcast interview on 'How to form a community resilient group. Learning from community member, knowing your community resources and understanding your vulnerabilities'.

- I completed the 'Accidental Counsellor' course provided by Life Line & the River Cares Committee attended a Community Defib Project Workshop in Wisemans Ferry & later in the year we attended the Central Coast Council workshop for 'Disaster Relief and Bushfire Preparedness'.

- October 2020 – River Cares invited Aloma Fennell the President of the National Older Women's Network to be a guest speaker at a luncheon at the Spencer Thai which was well attended.

- In December we had our first Community Creative Arts Day with the help of Breanna Pollack the resilience officer from CCC and Guari Ma Grace a local artist from Oyster Shell Road to help & inspire us to paint anything that represented or was relevant to why we love living In Spencer. This artwork is still a work in progress.

## Highlights and achievements In 2021:-

- Installation of new garbage bins along the foreshore; a new Warning Sign at the Spencer Public Boat Ramp; removal of damaged playground equipment; section of road repaired at No Name Creek;

- The Community and River Cares raised over \$6,000 for 2 AED's that were installed at Spencer General Store and at Marlow Wharf. River Cares assisted the Community Defib Project in applying for a grant and was successful for an additional 4 AED's that have been installed at Cohens Creek, Malaluka Caravan Park, Oyster Shell Road and at the bottom of the Divy.;

.:KSR.:.

**SANDSTONE  
BOULDERS  
ROCKS  
STONES  
CRUSHED  
DELIVERED**

**0411 868 437**

- Following the March floods and the amazing support the Community received from the Disaster Relief Team – Welfac, SES and the Salvos River Cares held our first Community Information Day in May. This was well supported by the Community and the following services:-

- Central Coast Council – Breanna Pollock Community Resilience; Anni Griffiths Bushfire & Emergency Preparedness.
- Central Coast Local Health District – Lauren Winch Mental Health Disaster & Adversity Response
- Community Defib Project – Cath Wade Team Leader (and Secretary for River Cares)
- Disaster Relief Team – Colin Lynch and Julieanne Holden
- SES – Wendy Whitmore and staff
- Spencer Community Progress Group – Brad Maisey and Mick Hatton

## OUTLAND Mechanical & Maintenance Service

Licence No. MVRL54125 ABN 14814837840



### Mobile Diesel Mechanic

- Specialising in Small Fleet Diesel Service
- Tractors • Farm Machinery • Mowers
- Earthmoving Machinery
- Welding

**John: 0427 660 752 jlhellyer67@gmail.com**

## PRINTING SERVICES

Lynwood Press

Your local printing service



- ∞ Flyers
- ∞ Booklets
- ∞ Stationery
- ∞ Business Cards
- ∞ Graphic Design
- ∞ Duplicate Books

*Publishers of the "Community News"*

Ph/Fax: 4374 1039 Mob: 0412 669 649

Email: enquiries@cnews1.com.au

- Spencer RFS – Alison Wade Captain and fire officers
- Uniting Services – Sally Conaty, Jodie Gatehouse, Catherine Cantle, Caroline Slavin and Amanda Gregory
- Wildlife Arc – Cathie Stubbs

• River Cares held the Greatest Morning Tea for Cancer Research raising over \$ 800. We are planning to hold this again in May so start going through your recipes for the bake-off competition;

• CCC hosted in conjunction with River cares a series of seniors workshops at the Spencer Community Hall during May & June. The workshops were designed to help build resilience for our ageing residents living in our remote communities. Topics included Nutrition, Falls Preventions, Legal Issues, Elder Abuse & Emergency Planning;

• Robyn Downham and Jane McCallum completed an 8 week online Emergency Response Training Course;

• River Cares have developed a preliminary Community Led Emergency Management Plan to help the community prepare and recover from extreme weather events.

**Issues still to address:-**

- New Public Toilets – Spencer;

- Failed embankments on Wisemans Ferry Road at Gunderman and possibly a third between Allens Creek and Cohens Creek;
- Improve Telecommunications – I am currently campaigning for a permanent generator to be installed at the sub-base station at Gunderman;
- Traffic Speed Control – Spencer Village;
- New signage – Spencer to be included on signs on Peats Ridge Road and George Downs Road;
- Foreshore Upgrade – Spencer
- Change of Post Code (Prolonged effect on emergency services response time) – Spencer & Gunderman
- Re-opening of Mangrove Creek Road & Pemberton Road.
- Further Emergency Planning/ Preparedness workshops – Bushfire/Flood/Storm.

I would like to take this opportunity to thank Jane McCallum for her unwavering support and to me personally, and her commitment to ensuring River Cares vision of enhancing the safety and wellbeing of the people of the Lower Hawkesbury River District is maintained.

Again thank you for your on-going support.

*Robyn Downham  
President*

## ‘Back Home’ Flood Grant Will Include Spencer and Gunderman

As Parliamentary Secretary for the Central Coast I welcome the announcement regarding the NSW Governments ‘Back Home’ flood grants made by the

Deputy Premier, the Hon Paul Toole MP, Minister for Customer Service and Digital Government, the Hon Victor Dominello and Minister for Resilience, the Hon Steph Cooke MP.

I can confirm that residents of the Central Coast region effected by the recent floods including Spencer and Gunderman will qualify for the ‘Back Home’ flood grants.

I am pleased that the NSW Government can support these communities to receive this necessary funding support.

I thank the community for reaching out to me and entrusting me with their concerns, including Robyn Downham, President of River Cares.

I look forward to the community being able to receive the necessary support to assist in their recovery.

*Adam Crouch  
Parliamentary Secretary for  
the Central Coast*

**Your LOCAL GUY for:**

- Fixed 4G Internet
- CCTV,
- WiFi,
- & more.




**STARLINK IS HERE**  
WE ARE NOW INSTALLING STARLINK INTERNET, AND VAST TV SATELLITE SYSTEMS.  
**CALL ME TO DISCUSS**



Master Security License: 101264  
Open Cablers License: 55883  
Insured PI & PL.  
Over 30 years In business.  
Techniport Pty Ltd T/A  
**CLOUD SECURITY**  
Call WARREN 0407 366 444

**WARD Septics**

**Septic Tank Cleaning**

- \* Small Pump Out Truck with Plumbers Jetter attached for clearing blockages in sewer pipes.
- \* Truck carries water to run Jetter
- \* Water Tank Cleaning

**\* And Even Cheaper Rates For You With A Neighbour**

**Call Paul For More Info**

**0438 315 514**

 **SepticCleaning.com.au**



## REGULAR ACTIVITIES & MEETINGS

### RURAL FIRE SERVICES

Bucketty RFS	Weekend Training Station Maintenance General Meeting	3rd Sat, 9am-12 pm, breakfast 8.30am Every Thurs as required, generally 10am-1pm 3rd Sat in even months, at 1pm, All welcome buckettyrfs@gmail.com (02) 4998 8130
Calga-Mt. White RFS	General meeting	3rd Monday of the month, 7.30pm at Pacific Hwy Fire Station Mt. White
Kulnura VBFB at Greta Rd Station	General meeting Training	1st Wednesday of the month, 7.30pm 3rd Wednesday of the month 7.00pm
Mangrove Mountain RFS Bloodtree Rd	General Meeting Training / Maintenance	Last Wednesday of the month, 7 pm, All Wednesday's except last of month, 7 pm
Spencer RFS	General Meeting Training Junior Training	2nd Monday of the month Meeting 6.30pm 3rd Monday Maintenance 6:30pm 4th Monday Training 6:30pm E: captain.spencer@ccrfs.org.au Alison Wade 0415 668953. 4778 Wisemans Ferry Rd
Somersby RFS	General Meeting Training/Maintenance	First Wed of the month 7.30pm at the Station Every Wed night 7.30 at the Station (except before Wed general meeting)
Yarralong RFS	Training: Nights: Morning: Maintenance/Training : General Meeting (GM): Contact:	First Wednesday of month 7pm start Last Saturday of month 8.30am start 3rd Sunday of month 8.30am start 2nd Wed of even months 7.30pm start Ph: 0409 915060 or 0418 280 764 Email: yarralongrfs@bigpond.com

### COMMUNITY & SOCIAL

Coastlink Friendship Group		Wed 9.30am-2pm at the Health Centre, Nurses Rd, Central Mangrove
Country Women's Association (Somersby)		Second Wed of each month, at Somersby Hall Wiseman's Ferry Road, Somersby, contact Sue, 43721280 or 0407768000.
Country Women's Association (Peats Ridge & District)		First Monday of the month at Community Hall, Peats Ridge School. Any enquiries please contact Christine 0419 400163.
Country Women's Association (Mangrove Mountain Evening Branch)		2nd Tues of the month at Mangrove Mountain Hall 2-4 Waratah Rd Mangrove Mtn. Start 5pm, meeting 7pm. Ph Judy 43771728
Gosford North Inner Wheel club		2nd Wed each month 7pm at Phillip House in Kariong. Contact: Glenis Ph: 0400 486 760
Gosford World Vision Community Group		4th Tues 11am in Presbyterian Church, West Gosford Contact: Glenis Ph: 0400 586 760.
Permaculture Central Coast		Third Tuesday (except Jan.) at Tuggerah CommunityHall, ANZAC Rd, 6.30pm - 9pm
Kulnura & District Garden Club		Second Monday, 9.30 for 10am start. Jacqui Maxwell 0455364262 kulnuradgc@gmail.com
Mangrove Mountain & Districts Community Group Meeting		1st Thurs of the Month, 7pm, Mangrove Mtn Hall. Danny Willmott 0407275653
Mangrove Emergency Planning & Communications Committee		Contact: mepccinc@gmail.com, 0412669649
Mangrove Mountain Country Fair Committee Meeting		2nd Thur of month except Jan, 7:30pm, Union Church Hall. Pres- Shane 0417 436 529
Mountain District Football Club Meeting		Second Tuesday of the Month 6.30pm at the Mangrove Memorial Club
River Cares for the Lower Hawkesbury River District		President Robyn Downham 0414248224 Email info@rivercares.com.au
Rotary Club Meeting		Friday 7.15am at Phillip House. 43404529
Spencer Community Progress Group Inc		President Brad Maisey, Community Meetings, 4377 1167, spencercpg2@gmail.com
Spencer Community Ladies Social Club		Last Fri of month. 12.00 noon Spencer Community Centre, Jennifer Dayes 4377 1364
	Newsletter	Articles to: spencercpg2@gmail.com
The Mountain Tuesday Social Tennis Group		Tue 9.30am-12.30pm, Kulnura Tennis Courts. Enquiries: Alison Palmer 0427731548.
Somersby Equestrian Club Club & Committee Meeting		Every 2nd month. Check website for further details. www.somersbyequestrianclub.org.au
Wisemans Ferry Community Men's Shed		Tues & Sat, 9am-5pm. Contact: Alan Hunt 4566 4626 or Adrian Acheson 0448 833 781

### SPIRITUAL

Anglican Service - Mountain Districts		Every Sun 8am at Peats Ridge Scout Hall, Sunday School during school terms
Mangrove Mountain Union Church, Christian Service		9.00am second and fourth Sundays. cnr Bloodtree Rd & Wisemans Ferry Rd
St Barnabas Non-denominational Service Yarralong		3rd Sunday each month, 11.00am. (Easter & (Christmas Carols dates to be advised)
Serbian Orthodox		2nd & 4th Sun. of the month. 10 am, followed by luncheon, tea, coffee, cakes (cost \$15). George Downes Drive, Peats Ridge
Kariong Community Baptist Church		Sun @9.30am, Church & Kid's Program, Kariong Public School Hall, Chris Clarke email revcre@hotmail.com

(cont'd next page)

## LIVESTOCK MARKET REPORT



### Liveweight Sale Report 11th April 2022

Maitland saw 700 liveweight cattle today. Made up of 650 vealers/trade cattle and 50 export cattle. We saw a firm export market this week and the restocker market was firm to 70c/kg stronger in places.

- Restocker steers up to 250kgs 520 to 840c/kg, avg 688c/kg;
- Restocker steers 250-300kgs 520 to 725c/kg;
- Restocker steers +300kgs 540 to 700c/kg;
- Restocker heifers up to 300kgs 470 to 720c/kg, avg 630c/kg;
- Restocker heifers +300kgs 500 to 655c/kg;
- Butcher vealers 570 to 620c/kg;
- Euro steers & heifers to go on feed 610 to 750c/kg;
- Milk & 2 tooth steers 500 to 600c/kg;
- Cows 260 to 365c/kg;
- Bulls 260 to 280c/kg.

Highlights: A/c Riverpatch sold their annual run of weaners with the steers averaging 645c/kg, 362kgs to return \$2,340 and the heifers 610c/kg, 335kgs for \$2,052.

### No Maitland Liveweight Sales on Monday April 18th or April 25th due to Public Holidays

A friendly reminder that we are often in the area seeing clients and looking at their livestock and if you would like us to call in be sure to give us a call.

Like and share our Facebook page!  
Keep up to date with [bowelidbury.com.au](http://bowelidbury.com.au)

Michael Easy & Rodney McDonald  
Bowe & Lidbury  
52 Kyle Street, Rutherford NSW 2320  
P: 02 4932 7066

# Coastability Scholarships Applications now open for \$5000

Applications are now open for the CoastAbility 2022-23 Scholarship for both academic and athletic pursuits for registered clients with the organisation. \$5,000 are on offer for successful applicants and the organisation is encouraging young people with physical disabilities to apply.

Local resident Dylan Littlehales, an accomplished para-canoeist and member of the Avoca Kayak Club, spoke highly of the scholarship after successfully receiving the funding for his trip to the Tokyo Paralympics last year.

"It really helped because \$5,000 is a lot of money, especially when you are not working and focusing all your energy on making it in the sport. It was good to be financially stable and be able to enjoy and focus on the games in Tokyo."

Competing in the national team for kayaking, his team placed two gold medals and a silver medal, with Mr Littlehales placing fourth by just 0.1 seconds.

Member for Gosford, Liesl Tesch, encourages all eligible young people to also apply.

"CoastAbility is an incredible non-profit organisation that has long supported disabled young people in being able to achieve their dreams whether it be to attend university or to compete on the international stage in big sporting events such as the Paralympics.

"I have had the privilege of meeting so many young, talented and disabled people on the Coast who are achieving incredible things just like Mr Littlehales."

For further information, visit <https://www.coastability.org.au/>.

*Liesl Tesch MP  
Member for Gosford*

## REGULAR ACTIVITIES & MEETINGS (cont'd)

Divine Retreat Centre (Ph 04 6848 6782)  
160 Hensons Road, Somersby  
[www.divineretreatcentre.org.au](http://www.divineretreatcentre.org.au)

Catholic Service -Spencer  
  
- Wollombi  
- Somersby  
- Yarramalong

### YOUTH

Junior Girl Guides 5-10

Girl Guides 10-15

Scouts, Cubs & Venturers  
Peats Ridge Scout Hall

Mangrove Mountain Playgroup

### HISTORICAL

Brisbane Waters Historical Society

Dharug & Lower Hawkesbury  
Historical Society Inc.

First Fleeters Central Coast Chapter

The Pearl Beach Aboriginal History Group

Wyong District Museum &  
Historical Society

### ACTIVITY/HOBBY

Central Coast GNU/Linux Users Group  
Coastal Communicators Toastmasters

Craft/scrapbooking

### HALL BOOKINGS

Kulnura Hall

Mangrove Mountain Hall  
Somersby Hall and Mountain Districts  
Culture and Heritage Centre  
Yarramalong school of Arts / Hall

Daily Holy Mass 8.00am to 8.30 am  
1st Fri, 5:30pm-8:30pm Divine Mercy Friday  
1st Sat, 5.30pm-9:00pm, Divine Youth  
Ministry, Young Adults (18-35yrs)  
Last Sun, 9am-4pm, One Day Retreat  
  
Holy Trinity Church, 2nd Sat of the month  
4pm, Contact 43771374 or 43771168 as times  
may change each month.  
2nd & 5th Sunday of the month, 4.30pm Mass  
at St Michael the Archangel, Wollombi.  
Every Sat. evening vigil - 5.30pm St. Francis  
of Assisi Centre, 30 Lutana Rd, Somersby.  
1st Sunday each month, 11.15am St. Barnabas  
All welcome. Enq 0428 438577

Kooree Guide Cabin, every Monday in school  
term, 5.00pm - 6.30pm  
Kooree Guide Cabin, every Monday in school  
term, 6.00pm-7.30pm

Cubs meet 6.30pm - 8.30pm Wednesdays  
Scouts meet 7.00pm - 9.00pm Tuesdays  
Venturers meet 7.00pm - 9.00pm Mondays  
Contact 0460 696 941

Every Tues (except school holidays) 9am to  
11.30am, Kooree Guide Cabin. Bec G, PH:  
0421 996 029 Anne, PH: 0412 526 557  
Email: [becgilmour@gmail.com](mailto:becgilmour@gmail.com)

25-27 Henry Kendall St., West Gosford, Ph:  
4325 2270. [www.henrykendallcottage.org.au](http://www.henrykendallcottage.org.au)

Last Sat of month. All welcome, contact Jan  
Kofron 0405321478 [jankofron@optusnet.com.au](mailto:jankofron@optusnet.com.au)

2nd Sat of the month, 10.00am for 10.30,  
Point Clare Hall (except Jan & Dec). Contact  
Jon 43116254 and Gavin 43404435.

3rd Fri each month 7.30pm Pearl Beach.  
Peggy 0411754577 [pbaboriginalhistory@  
gmail.com](mailto:pbaboriginalhistory@gmail.com)

Open Sun to Thurs, 10am-2pm, other times  
by appt. Contact 43521886 email [info@  
alisonhomestead.com.au](mailto:info@alisonhomestead.com.au). website: [www.  
alisonhomestead.com.au](http://www.alisonhomestead.com.au)

[www.cclug.org.au](http://www.cclug.org.au) - all most welcome

1st & 3rd Thurs of month, 6:45pm to 8:45pm  
at Doyalson-Wyee RSL. Debbie 0421216952  
Yarramalong Hall 4th Sun. of the month 10am  
to 5.00pm cost \$12 per person ph 43561196

Hall bookings contact Annette Stackman  
43561196 Committee mtg 3rd Thurs 7:00pm  
at Hall- Open to all from community.

Hall bookings Ryan Howard 0405416289

Hall bookings: 0413 359 655  
or AH 4373 1488

David Gillett 0416 097192  
[enquiries@yarramalonghall.org.au](mailto:enquiries@yarramalonghall.org.au)  
<https://yarramalonghall.org.au>

## REMINDERS FOR YOUR DIARY

NSW Farmers Central Coast  
Horticultural Branch  
Mangrove Mountain & Districts  
Country Fair

AGM and General Meeting Thurs, April 28,  
7.30pm Mangrove Mountain Memorial Club  
Saturday October 15th, 9am - 3pm, at  
Mangrove Hall and Mangrove Mountain  
Recreation Reserve

**Antennas - Digital**  
Hayward Video & Antenna Service  
VAST Satellite Service  
"Government approved installer"  
Phone Ray Hayward  
Mob: 0412 685 555  
20 Sierra Crescent, Gosford East  
Email: [rayhay@bigpond.net.au](mailto:rayhay@bigpond.net.au)



LIC# 227507C  
**ELLIS**  
ELECTRICAL SERVICES PTY LTD  
0411 317 506  
Commercial | Residential | Industrial



# SAVE THE MANGROVE MOUNTAIN UNION CHURCH \*\*HOW YOU CAN HELP\*\*

Our goal is to "Work together as a community, to keep the Union Church safe in our community, for those who will become our community's future, as intended by those from our community's past"

We welcome your ideas and/or offers of support. Otherwise, you can help in the following ways: -

1. If you would like to contribute financially to the campaign, donations can be made to the Mangrove Mountain Christian Group Inc at Bendigo Bank, BSB 633-000, A/c 185477965.

2. Join the Mangrove Mountain Christian Group. Joining fee is \$1 and annual fees are \$2. Please contact our Secretary by email to [mmcgsecl@gmail.com](mailto:mmcgsecl@gmail.com) for an application form.

3. You can also write/email a

## FOR RENT / LEASE

LITTLE FLAT ON ACRES Carport, kitchen, bathroom, balcony, aircon, use of pool. \$140 pw. 0431087281

personal letter to the Liquidator Mr Barry Taylor, Restructuring & Risk Advisory, HLB Mann Judd, Level 19/207 Kent Street, SYDNEY NSW 2000 or by email to: [btaylor@hlbnsw.com.au](mailto:btaylor@hlbnsw.com.au) Please be civil and courteous to the Liquidator.

Please highlight any personal links you have with the Union Church and how important it is to yourself and the local community that the Union Church continue to operate as it has done for the past 110 years.

Also explain that there is strong community support and financial backing for the Church to continue operating and therefore it is hard to understand why the former committee chose to wind the Church up.

A copy of your correspondence would be appreciated by either email to [mmcgsecl@gmail.com](mailto:mmcgsecl@gmail.com) or post to MMCG c/-6 Waratah Road, Mangrove Mountain NSW 2250.

*Robert Meggs, President (tel – 4376 1451)*

*On behalf of the Mangrove Mountain Christian Group Inc.*

## FOR SALE

GALE'S CITRUS - Bagged Citrus trees in various sizes available ph. 4372 1408 or mobile 0421 196 631

MULCH for sale. 10m<sup>3</sup> Minimum - \$400.00. Delivery if applicable. David 0418 233595

DRAINAGE MATERIAL, certified crushed roof tiles. Delivery Charge only. Please phone 0438731015.

SOLAR BATTERIES: LG Chem 3.4kwh and a 6.4kwh plus inverters; up to 8 years warranty remaining; all perfect condition. Enough Battery storage to take most homes off grid. \$4500. Contact Murray, 0411119090.

Decking timber. Brand New wrapped 500m 86x19 Grey Box STD planks plus 500 50x12g stainless screws and 12g cleaver with drills. \$6000 for the lot. Contact Murray 0411119090

## POSITIONS AVAILABLE

CLEANER WANTED - Kulnura area. Good rates for approx 8 hours per week. Flexible hours. Contact: [gary@bigpond.net.au](mailto:gary@bigpond.net.au)

POSITION AVAILABLE for young lady (17yrs to 20 yrs) to work in a Dental Clinic.

Experience not essential as training will be provided. This position would be ideal for someone with the following attributes:

- Must have a passion to learn new skills.
- Good communication skills.
- Computer skills.
- Be friendly and passionate.

The position is in Gosford close to public transport and parking. Above award wages offered. Please phone 0408470418 to arrange interview.

## MANGROVE PRODUCE AND HARDWARE

1668 Wisemans Ferry Rd, Central Mangrove (just 1km from the Crossroads)

**AUTUMN IS HERE  
TIME TO FERTILISE**  
We have all your garden needs  
including vegetable &  
grass seeds, fertilisers,  
sprays & sprayers.



- ◆ Horse Feed
- ◆ Fertiliser
- ◆ Paint
- ◆ Pet Food
- ◆ Timber
- ◆ Plumbing
- ◆ Bird Seed
- ◆ Hardware
- ◆ Fencing
- ◆ Vet Supplies
- ◆ Hand Tools
- ◆ Electric
- ◆ Chemicals
- ◆ Power Tools
- Fencing

Mon-Fri: 7:30am -5:00pm  
Sat: 8:00am -2:00pm

Ph: 43731259

SHOP ONLINE AT  
[www.tuckersstore.com.au](http://www.tuckersstore.com.au)  
or [shop.truevalue.com.au](http://shop.truevalue.com.au)

## CLASSIFIED ADVERTISEMENTS

These columns will be set aside each issue for residents to advertise inexpensively and effectively in their own local paper. If you have anything you wish to sell, buy, swap, etc., ring 4374 1039 or 0412 669 649 during office hours. Rates start at \$4.00.

### POSITIONS AVAILABLE

GENERAL CLEANING such as vacuuming, dusting etc.. 3 bedroom house, located at Kulnura. Any day between Monday to Saturday. Roughly 4-5 hrs work a week. Call Matt 0438560839

CARETAKER WANTED - We are looking for a Caretaker / Handyperson.

We have a children's camp on Wisemans Ferry Rd near the shops and are seeking a Handyperson to Caretake the Children's Camp. This position comes with a 2 bedroom flat. General Maintenance and upkeep of the grounds required. Please contact John on:-

M) 0416 150073 or  
Email: johnw2011@bigpond.com

DELIVERY DRIVER for deliveries in local area. Up to approx 10 hours / 2 days per month. Must be reliable & punctual, have own reliable vehicle, current drivers licence and good driving record. Phone 0412 669 649

WATERMANS EXCAVATIONS is seeking a highly experienced and motivated excavator/machine operator to join our growing team.

Our requirements are as follows:

- Minimum of 5 years' experience and related certifications.
- A HR license
- Ability to work overtime, when required
- Able to work independently and meet deadlines.

To apply for this position, please email a copy of your resume to admin@watermansexcavations.com.au or call on 0431956445

### AGISTMENT

HORSE AGISTMENT AVAILABLE. Full care. Group and individual paddocks with shelters. Full size sand dressage arena, grass jumping arena. Located walking distance to Peats Ridge Village and Café. Call Cameron on 0438695600.

### SERVICES AVAILABLE

RURAL FENCING - Post & rail, wire stock, chainwire, colourbond, paling etc. Also Landclearing. Phone Rick 4373 1117

HORSE RUG REPAIRS - reliable prompt service. Pick-up & drop-off available for large quantities. Ph 0405 620 394

### TERMITE DAMAGE BUILDING REPAIRS

minor to major structural  
Mark 0418112630

Email: CCtermite@gmail.com

### 8 TONNE EXCAVATOR FOR HIRE

Tilt hitch, Hydraulic grabs, Auger, Blade, Full range of buckets, Multiple other services available. L & L Kerslake. 43741678 - 0427003721

### PEATS RIDGE HAIR CUTS MEN - LADIES - CHILDREN

Wed, Thu, Fri 9am-5pm. Sat 8am-1pm  
Walk in - no appt necessary Ph 0447436558

### LAURIE DOUGLASS PLUMBING

Plumber, Drainer, Gasfitter, Roofer -  
Ph 4373 1257 Mob 0407 008 488

### FENCING AND SLASHING.

Also: FIREWOOD For Sale. David Starkey.  
4374 1192 or Mobile 042 725 7948

OOST Painting Contractors - Lic 71725C

Quality & cleanliness assured.

For a free quote call David 4356 1449 or  
0417 234 094. Yarramalong Local

**PEST CONTROL - Servicing the local area. A.T.S. Pest Control Services Phone Tony 4373 1157 Mob: 0427 731 157**

PATRICIA'S HAIR CARE - 15 Woy Woy Road Kariong. Ph 02 4340 1624. Late night Tuesday. Open Tuesday Wednesday Thursday. Ladies/Men/child. Cuts/colours/perm

MISTY MOUNTAIN RURAL CONTRACTORS - Earthworks, Irrigation, all services available Ph 43530990 or 0418221495

ANTENNAS - DIGITAL - Specialists with VAST Satellite Service, extra outlets, boosters. Mobile service 4323 6367 or 0412685555

### HORSE & LIVESTOCK BURIALS

www.horseburials.com.au  
Ph Craig 0411 2888 12

BRICKLAYING & Render repairs. Adrian 0408347737. Lic 98665C

AIRCONDITIONING, BUILDING, CARPENTRY - Local service, 14yrs experience in aircon, 22yrs experience in building & carpentry. Call Ken 0412 842 920

### ALL COVERS & CANVAS WORK!

Boats, Vehicles & Horse floats re-trimmed, cover & horse rug repairs, no job too small! Servicing the mountains & the valleys. Call Alan on 0414 993 669 or Louise on 0410 646 200. located at Yarramalong Road Wyong Creek.

### TOWN 'N COUNTRY FLOOR SANDING & POLISHING

New & old floor boards, parquetry, verandahs, stairs, walls ceilings, re-coating, staining & painting etc. free quote ph Stuart 0400076261

# WATER BORES

Local drilling company  
based at Ourimbah

Contact: Paul Slade  
Ph/Txt: 0408 471247

email:  
Sladedrill@bigpond.com



Mountain Medicine

Providing the local community with a collaborative approach to multidisciplinary healthcare.

### Dr Christine Wade

B.Med (Hons) FRACGP

### Pathology - Douglass Hanly Moir

Ph: 43741942

### Ricky Li

Mangrove Mountain Physiotherapy and Sports Injuries

### Torin O' Grady

Podiatry (Foot Care)

**Now Taking Appointments  
for COVID19 vaccine  
call 43741252 - non-patients accepted**

40 Niclins Rd, Mangrove Mountain NSW 2250

All Allied Health Professionals are EPC accredited. Medicare rebates are available if you have a GP Management Plan with Team Care arrangements. Please enquire for more details.



Contractors Licence No: 367849C

# WATERMAN EXCAVATIONS PH: 0438 617 851

Mulching Horse Arenas Certified Fill

Admin@Watermanexcavations.com.au  
www.watermanexcavations.com.au

- Excavators - Tipplers - Grader - Dozer - PoziTrack - 6X6 Dump Truck

## CROSSROADS AUTOMOTIVES

Terry Kyriacou

Mon - Fri: 7:30am - 5:00pm

Saturday: 7:30am - 12:00pm

SPARE PARTS

LOG BOOK SERVICES

MECHANICAL REPAIRS Ph: 4373 1774



Cnr of Wisemans Ferry Rd. & George Downes Drive, Central Mangrove

**AUTHORISED INSPECTION STATION (INCL LPG)**

## MLS MOUNTAIN LANDSCAPE SUPPLIES

SANDS SOILS MULCHES WOOD-CHIPS GRAVELS PEBBLES  
PLANT NURSERY - GIFTS - FIREWOOD

**DELIVERY AVAILABLE 6 DAYS A WEEK**

**PH: 4376 1055**

988 George Downes Drive Kulnura  
mls@live.com.au



• AGRICULTURE • INDUSTRIAL • DOMESTIC

Licence No - 269888C

**\*24 HOUR EMERGENCY CALLOUT SERVICE\***

Ph: 4322 3333 Fax: 43223433

Email: sales@girrigation.com.au

Web: www.girrigation.com.au

Unit 2 254 Manns Road, West Gosford NSW 2250



### K&T PROPERTY CONSULTANTS PTY LTD

Real Estate Valuers & Land Economists

#### ROBERT MEGGS FAPI CPV

*providing independent property valuation advice, including:-*

- Stamp Duty, CGT, GST & Retrospective Valuations
- Probate & Estate Valuations • Insurance Valuations
- Valuations for Family Law • Pre-Sale/Auction Advice
- Land Value & Compulsory Acquisition Valuations

500 Kyola Road  
KULNURA NSW 2250

Email: ktpropty@ozemail.com.au

Telephone (02) 4376 1451

Facsimilie (02) 4376 1452

Mobile 0429 44 33 10

### Misty Mountain Rural Property Development Services



- agricultural consultants
- pasture improvement
- fertilizer spreading
- weed spraying
- all tractor work 4/2WD
- soil conditioning
- irrigation install/design
- fencing & stables
- crop planning & planting & all excavations
- concrete slabs Lic. R94321
- property evaluation & planning & management
- fork lift hire

Ex-Dept. Agriculture Officer with 45 years  
experience in the local district.

Greg Koutoulas is the man to call on 0418 221 495



### Stop Water Shop

Authorised Dealer

**ONGA, DAVEY and  
GRUNDFOS PUMPS**



### K. W. & M. E. WEST Pty. Ltd.

1650 Wisemans Ferry Road,

Central Mangrove

Phone 4373 1164 Fax 4373 1049

### PUMP REPAIRS AND SERVICE

#### Trading Hours

Mon - Fri

7.30 am - 5 pm

Sat 7.30 am - 12 noon

Closed Public Holidays