

COMMUNITY NEWS

No. 893 Ph: 4374 1039 Mo: 0412 669 649 Email: enquiries@cnews1.com.au Web: cnews1.com.au 18th February 2022

Peats Ridge CWA

Our February's meeting was held at Donnas home and we thank her with seven members and three guests , Johana the Groups Historian, Amy and her beautiful little baby Gracie.

Our President Margie opened our meeting welcoming us to the Darkinjung Country and then the Motto was said.

It was a special meeting presenting Margaret with a Long Service Bar and this is given after twenty years being with the CWA and what an honour for our branch to have such a talented lady-congratulations Margaret.

Our Secretary Nicole gave all of us a Lacey(red envelope) as it is the Chinese tradition at the New Year and we were all thrilled.

Our members also received a special gift- a badge celebrating the Associations 100year - its good to award our members who work tirelessly for our branch.

Discussions were made about the upcoming display day on the 24th March where handicrafts are judged as well as cakes (here we go again and lets hope our ovens are kind to us).

Our next meeting on the 7th MARCH will be at the Community Hall at Peats Ridge and thereafter.

You are welcome to come and join us and have a cuppa and see what we are all about.

Till next time,

Christine Sanfilippo
Publicity Officer



Kulnura Tennis Is Back

With School Children back at school we resumed our weekly Tuesday morning tennis on the 1st of February.

Tennis starts at 9.30 am and finishes around Midday at the Kulnura Courts opposite the Kulnura Shop and next to the Hall.

An invitation goes out to any one with the inclination to pick up a tennis racquet and join us regardless of how rusty you think you may be. Come and get those endorphins pumping.

The emphasis is on exercise for the mind and the body rather than competing. Gender is irrelevant.

Have fun!

BYO refreshments from home or pop across to the Shop for a take away coffee if need be.

Stay connected with your community. We'd love to see you there unless it's raining.

Look forward to seeing you.

Kaye Collins ph. 0403844068

Alison Palmer ph. 0427731548

NOTICE

Mangrove Mountain & Districts Community Group AGM

The Mangrove Mountain & Districts Community Group AGM will be held on March 3, 2022, commencing 8pm at Mangrove Hall.

Nominations for the committee must be received by the Secretary at least 7 days prior to the AGM.

The AGM will be preceeded by an ordinary meeting, commencing 7pm.

All Welcome.

Danny Willmott,
Secretary

MOUNTAIN DISTRICTS ASSOCIATION NOTICE OF AGM

Annual General Meeting
Wednesday 9th March, 2022,
7pm
Mangrove Mountain Memorial Club
All welcome

Poppe Zouroudis
Secretary

STOP !

Next issue Published
4th March 2022

**** DEADLINE ****

**** 25th February '22 ****

Send adverts & copy by
email, website or post.
Email, website, FB or
phone for enquiries

Riding for the Disabled

Our Volunteer and Information Day will be held at our Kangoo Road Somersby headquarters from 10am on Saturday 26th February 2022.

All welcome.

All our volunteers must be fully vaccinated. Please bring a mask if you are attending our Volunteer Day.

Do you want to be a Volunteer with RDA (NSW)? Do you know someone who wants to Volunteer? Help to lead our horses or assist riders. Lend a hand throughout the grounds at your local RDA (NSW) centre. Why not help at fundraising events or functions? Whatever your talent, we can use it!

Volunteers don't need any prior knowledge of horses, they learn on the job. Tasks may be horse and non horse related including making cups of tea, assisting riders to prepare for their lesson and helping with activities in lessons.

All volunteers, coaches, riders are asked to adhere to a Code of Conduct. All volunteers must hold a current Working with Children Check number (WWCC).

Contact your local centre and ask about volunteering. You will receive training when you attend a centre.


You can also contact the state office of RDA (NSW) and we will forward your enquiry the centre closest to you.

More than 1,500 volunteers are needed to run RDA (NSW) and our Centres.

The primary objective of Riding for the Disabled Association (NSW) is to provide most people with a disability, the opportunity to ride and enjoy all the activities connected with horse riding. Riding for people with a disability is both therapeutic and recreational and RDA is in fact one of the few organisations who offer a multi-diagnostic service, catering for people with a wide range of disabilities.

RDA Central Coast - 43651990
centralcoast@rdansw.org.au





EBH
BUILDING GROUP
PTY LTD

OUR SERVICES INCLUDE:

- Custom built homes • Granny flats
- Extensions • Carpentry services
- Renovations • Decks & Pergolas
- Waterproofing & Bathroom renovations
- Disabled modifications
- Asbestos removal
- Building maintenance

Dane Meredith | Builder
0243513200
0420906499
dane@ebhbuilding.com.au

PROVERBS

26:24-26

24: Enemies disguise themselves with their lips, but in their hearts they harbor deceit.

25: Though their speech is charming, do not believe them, for seven abominations fill their hearts.

26: Their malice may be concealed by deception, but their wickedness will be exposed in the assembly.

CENTRAL COAST DENTISTS

incorporating

Mangrove Mountain Dental Centre

Shop 3, 9-12 William St. Mall, Gosford
This is opposite the Imperial Centre next to Kibble Park

Dr Michael Kotis BDS Syd. Uni.

- ✦ Family dental care
- ✦ Dental emergencies
- ✦ Preventive care
- ✦ Orthodontics - teeth straightening
- ✦ Dentures
- ✦ Dental crowns & bridges
- ✦ Wisdom teeth removal
- ✦ Oral hygiene & dental care products

4325 1710

info@CentralCoast.Dentist

Medicare childcare benefits bulk-billed
Veterans affairs cardholders accepted
We accept Dental Vouchers issued by NSW Government Health

 **HICAPS**  available

MANGROVE MOUNTAIN PHARMACY



Monday – Friday: 8:30am-6pm
Saturday: 9am-2pm Sunday: Closed

Covid-19 Vaccines & Booster
Pfizer, Moderna, AstraZeneca
including kids 5-11yo
Now Available - Phone for Bookings

- 💧 Free webster packing and all your pharmacy needs
- 🏠 Household goods and gifts
- 🥛 Milk, cold drinks
- 💰 Return and Earn collection
- 📦 Parcel point outlet





3/1 Waratah Road, Mangrove Mountain, NSW 2250
Phone: (02) 4374 1457 Fax: (02) 4374 1479
Email: mangroventpharmacy@gmail.com

MANGROVE CREEK DAM VISITOR SPACE REDEVELOPMENT

Community members have been invited to share their values, stories and aspirations associated with the Mangrove Creek Dam picnic area, lookout and surrounds to influence the design of an exciting new Visitor Space at this significant site.

Central Coast Council has received \$2.567million from the NSW Government's Bushfire Local Economic Recovery (BLER) Fund to complete this important project.

Council Director Water and Sewer, Jamie Loader said the new Visitor Space will play a key role in supporting locals who were significantly affected by the Three Mile and Gaspers Mountain Fires.

"Here on the Coast it was community members in our mountain and hinterland regions who were hardest hit by the devastating fires of 2019-20," Mr Loader said.

"The fires posed a threat to life, property and environment, and local businesses faced reduced patronage for an extended period of time.

"Our visitor facilities at Mangrove Creek Dam were completely destroyed in the Three Mile Fire and we are seeking to create a new Visitor

Clean up Australia Day Sunday 6 March 2022 10am to 12pm

Save the date!

You can make difference to our environment! Be a part of something HUGE and join thousands of people across Australia who will take a morning out of their busy lives to make their place a more beautiful place to be!

- Come and join the Mountain Districts Association as we again participate in Clean Up Australia Day on Sunday 6th of March 2022.
- Register at <https://www.cleanup.org.au/> (search: Join a Clean up; then 2250 Mangrove Mountain)
- Meet us at the Mangrove Mountain Recreation Reserve (next to the Hall on the corner of Wisemans Ferry Road and Waratah Road) between 10am to 1pm on Sunday 6 March 2022.
- Weather permitting, BYO picnic and join us for a picnic lunch to relax and catch up after all the hard work is done.

Since 1987 Clean Up Australia Day has brought communities together to pick up over 3.5 million tonnes of rubbish! Unfortunately others just keep on throwing it out there, on our roadsides and in our parks - so it is up to us to Clean Up Australia!

"Because when the rubbish is gone – nature can carry on!"

Space that encourages both locals and tourists to spend more time enjoying this beautiful area and supporting local businesses.

Key features of the concept design for the new visitor space include:

- new amenities block
- new overhanging viewing platforms on two levels

- proposed two level viewing platform at significant survey pillar and rock outcrop
- new picnic table shelters, bins and bench seating throughout
- new gravel and concrete pathways around the site including disabled access

Central Coast Council Media Release



Mountain Medicine

Providing the local community with a collaborative approach to multidisciplinary healthcare.

Dr Christine Wade

B.Med (Hons) FRACGP

Pathology – Douglass Hanly Moir

Ph: 43741942

Ricky Li

Mangrove Mountain Physiotherapy and Sports Injuries

Torin O' Grady

Podiatry (Foot Care)

**Now Taking Appointments
for COVID19 vaccine
call 43741252 - non-patients accepted**

40 Niclins Rd, Mangrove Mountain NSW 2250

All Allied Health Professionals are EPC accredited. Medicare rebates are available if you have a GP Management Plan with Team Care arrangements. Please enquire for more details.

UPCOMING CATTLE AUCTIONS

Maitland Regional Saleyards

- Weekly Monday Liveweight Cattle Sales 9am, followed by Calves, Pigs & Sheep from 12 noon
- Store Cattle Sale March 19th from 12 noon

Gloucester Saleyards

- Fortnightly Thursday Store Cattle Sales 11am March 17th

Feedlots - Abattoirs - Paddock to Paddock Sales
Clearing Sales - Rural Property Sales

Follow us on Facebook or join our e-list on
www.bowelidbury.com.au



Bowe & Lidbury Pty Ltd

(02) 49 327 066

Applications for NSW Youth Parliament Now Open

Applications for the Y NSW Youth Parliament, a program designed to bring the voice of youth to NSW Parliament are now open.

Member for Gosford, Liesl Tesch is encouraging Central Coast youth in years 10, 11 and 12, or the equivalent age range, to apply to the Y NSW Youth Parliament to communicate the concerns of young people and ignite change.

“Youth Parliament is a program I look forward to every year. I realise most of the decisions we make today is going to impact the lives of young people.”

“There are also problems people my age have never encountered that young people are currently navigating, like learning online and the lessening opportunity to socialise as a result of the pandemic.”

“These issues are unique to the youth of today and it is crucial we have representatives from the Central Coast who can be the voice of our region and evoke a change in policy to benefit their generation and the many generations to come.”

The program includes legislative debate and decision making exercises, with two camps and several other meetings scheduled in.

Since the beginning of the Y NSW Youth Parliament tangible differences have been made with approximately six pieces of legislation passing into NSW Law, including the Domestic Violence Disclosure Scheme.

Ms Tesch says the Central Coast is blooming with young voices who are ready to make a change.

“As a former high school teacher and in my role as the Member of Parliament I have been honoured to meet so many young and fierce Coasties ready to speak their mind on policy that impacts them.”

“Particularly in this day and age there is a heightened need to not only hear, but most importantly, a need to listen to youth and seriously consider policy they want to push forward.”

Applications close 28 February

DHARUG & LOWER HAWKESBURY HISTORICAL SOCIETY

The weather was very kind to us at the Chapel last Saturday, 22nd January 2022 for the Dharug & Lower Hawkesbury Historical Society. This was our first activity in 10 months and so we had planned a low key event along with lots of fall back positions given the times in which we are living. We welcomed back our current members, 17 and 2 returnees.

We were very fortunate to also have Robyn Downham along and to congratulate her on her recent award as Central Coast Citizen of the Year 2022. Robyn has been a member of

at 5pm. For more information on the program and how to apply head to: <https://www.ymcansw.org.au/community-services/youth/youth-parliament/>.

*From the Office of
Liesl Tesch MP
Member for Gosford*



20 Langford Drive,
KARIONG

4340 5154

Chiropractic Massage
Nutritionist Acupuncture
Counsellor Podiatrist
Hypnotherapy

HICAPS available
Medicare EPC & Workers Comp accepted
After hours appointments available

Like us on social media for
the latest clinic news




**Caring for Kariong & the
Mountain District for over 20yrs.**

Dr. S. ANANDASIVAM
(ANAND)
MBBS, FRACGP, AMCC

For Doctor Appointments:
Monday - Friday 9am- 5pm

*Laverty Pathology Service
Available:
Monday to Friday 8:00 till 3:30
Saturday 8:30 till 12*

Medicare Bulk Billing

**1639 Nurses Road
Central Mangrove, 2250
02 4373 1914**



the Society for many years and has also held committee positions such as Publicity Officer as well as past President. During her time as President Robyn worked tirelessly to ensure we got much needed equipment and a new shed for storage.

Robyn has been working tirelessly in the Lower Hawkesbury River District to improve the access of Spencer and surrounding communities and environs to services that other places take for granted. Her latest endeavours with the new community

group River Cares as President has also been recognized. We used this activity to help Robyn celebrate her Award. Robyn spoke about the work completed at Spencer including the Telstra/Optus mobile tower and the upgraded Spencer Public Wharf which was completed just before the December 2019 bushfires. Since River Cares was formed in 2020 Robyn has been involved in fundraising for the automated defibrillators installed in Spencer and in Marlow, community information days, holding workshops in conjunction with the Central Coast Council and is currently working with Jane McCallum the River Cares Secretary/Treasurer on the Community Led Emergency Response Plan for the Lower Hawkesbury River District.

The Society had on display articles collected by John and Jocelyn Powell ex-Spencerites during their more than 20 years involved in the area researching books and being active members of the Society.

Articles on now departed characters of St Albans and Spencer which featured in local papers were also on display.

The Society congratulated Robyn on her well deserved success and wish her well for the coming year. She will keep us informed on upcoming activities throughout the year.

*Jan Kofron, Secretary
Dharug and Lower Hawkesbury
Historical Society*

CNS Electrical
Lic No. 214132C

Your local Electrical Contractors on the mountain, specialising in Rural, Domestic, Commercial and Industrial works, including:
Excavation, Trenching, Mains & Sub-mains, Voltage Calculations & Future Planning.

Call Cameron for a quote on: 0438 695 600
Office: 02 9157 7646
Email: admin@cnsindustries.com.au



 **Bikes n Motors**
Service & Repairs
All Light Vehicles
Cars & Bikes
PH: 0491 622 080
bnm@bikesnmotors.com.au
1154 George Downes Dr, Behind Jerrys'

FABIAN FARM
Cell Grown Seedlings

**"OUR SEEDLINGS ARE SECOND TO NONE
THERE IS NO SECOND CHOICE"**



OVER 50 YEARS GROWING EXPERIENCE
Elwyn and Dallas Fabian

Office: 02 4374 1281
Fax: 02 4374 1011
Elwyn: 0418 432 477
Dallas: 0417 285 047

191 Waratah Road, Mangrove Mountain, 2250

Recycle to Support Mangrove Mountain Country Fair!



Press 'donate' at the reverse vending machine at **Mangrove Mountain Memorial Club**, and your proceeds will help us hold our Annual Country Fair in October 2022!

Find out how it works at returnandearn.org.au

Return and Earn is a NSW Government initiative



SAVE THE MANGROVE MOUNTAIN UNION CHURCH **HOW YOU CAN HELP**

Our goal is to "Work together as a community, to keep the Union Church safe in our community, for those who will become our community's future, as intended by those from our community's past"

We welcome your ideas and/or offers of support. Otherwise, you can help in the following ways: -

1. If you would like to contribute financially to the campaign, donations can be made to the Mangrove Mountain Christian Group Inc at Bendigo Bank, BSB 633-000, A/c 185477965.

2. Join the Mangrove Mountain Christian Group. Joining fee is \$1 and annual fees are \$2. Please contact our Secretary by email to mmcgsecl@gmail.com for an application form.

3. You can also write/email a personal letter to the Liquidator Mr

Horse Vet

Somersby - Mangrove & Central Coast area

Brett Warren

Mobile: 0428 215 599
Home: 4374 1640

Email: brettvet@ozemail.com.au
www.centralcoastequine.com.au

Consultations by appointment

Mobile X-ray, endoscopy, purchase and insurance exams



CROSSROADS CRANES

40 ton all terrain CRANE now serving mountain districts & beyond.

Call Alan 0456607501

SOMERSBY ANIMAL HOSPITAL

Dr. Robin Crisman & the SAH veterinary team
79-b Howes Road, Somersby

- A full service, purpose built veterinary hospital.
- Large and small animal consults incl. horse repro.
- House and farm visits. - Cat boarding available.

Call us on: 4372 1799

www.sahvet.com.au
visit us on Facebook

The Grass Cutters

- Slashing
- Rock picking
- Farm cleaning and clearing
- Cultivation and more
- Obligation-free quotes



Call **0419 412 993**
Email pat@thegrasscuttersrus.com

See us in action at: thegrasscuttersrus.com

Barry Taylor, Restructuring & Risk Advisory, HLB Mann Judd, Level 19/207 Kent Street, SYDNEY NSW 2000 or by email to: btaylor@hlbnsw.com.au Please be civil and courteous to the Liquidator.

Please highlight any personal links you have with the Union Church and how important it is to yourself and the local community that the Union Church continue to operate as it has done for the past 110 years.

Also explain that there is strong community support and financial backing for the Church to continue operating and therefore it is hard to understand why the former committee chose to wind the Church up.

A copy of your correspondence would be appreciated by either email to mmcgsecl@gmail.com or post to MMCG c/-6 Waratah Road, Mangrove Mountain NSW 2250.

Robert Meggs, President (tel – 4376 1451)
On behalf of the Mangrove Mountain Christian Group Inc.



Lifeblood Teams



Give life. Give blood.

What is it?

Lifeblood Teams is a way for friends, colleagues, team mates and communities to band together and give blood. It doesn't matter if there are 5 of you, or 500 — nothing beats the feeling of saving lives together.

What are the benefits?

Aside from genuinely saving lives, Lifeblood Teams is about friendship, community and a little healthy competition. It's about lifting spirits and making you proud to be part of something bigger than yourself.

What's involved?

You'll need to appoint someone special as your Lifeblood Champion. As our first contact, they'll help book group donations, recruit members and spread the word about your team's life-giving achievements.

How do I know where to start?

That's what we're here for! If you decide to be a Champion, we'll provide you with all sorts of tools to help you understand how donation works, and make it easier to spread the word. Being a Lifeblood Champion means you can get involved and be a really important part of a life-saving team.

How do I become a Lifeblood Champion?

We love your enthusiasm! Let's make it official. Head to donateblood.com.au/lifeblood-teams and register your Lifeblood Team there. You'll find some more info to help you out but if you have any questions, just give us a call.

What's next?

When you (or your nominated Champion) have finished registering your team, it's time to get the word out. Shout out to your co-workers, friends, team mates or family so they can help you help others. One of our account managers will be in touch to give you a hand.

After that, all you have to do is book a team donation, give blood and save lives. Your donations will count towards your Lifeblood Team's tally.



 lifeblood teams  1300 886 524

Peats Ridge
AUTO ELECTRICS

Stephen Andrews Lic. No.: MVRL22840

35 Years of
Local Experience

- All Electrical Repairs
- Starter Motors & Alternators
- Lighting, LED
- Electric Brake Controls
- Dual Batteries
- Cars, Trucks 4WD, SUV
- Agricultural Machinery
- Marine • Caravans
- Golf Carts • Horse Floats

Plus an extensive range of parts and accessories in stock



We stock quality
Century Batteries
made in Australia for
local conditions



All your battery needs at very competitive prices

Ph: 4373 1137

1160 Peats Ridge Rd, Peats Ridge 2250



Sustainable Natives

(wholesale production nursery)
94 Keighley Avenue, Somersby - Sales by appointment.

Contact Jonathan Steeds on 0415465162
jonathan@sustainablenatives.com.au
or Olga@sustainablenatives.com.au
web: www.sustainablenatives.com.au

We produce a large range of Australian Natives including local species. We supply retail nurseries, landscapers, bush regeneration projects, developers and local property owners with tubestock to semi advanced plants.
We offer a design (landscape architecture drawings)/consultation service for your property to add more natives to your landscape.

Mangrove Mountain Plumbing

Central Plumbing, Renovations, New Homes, Pipe & Cable Locator, Gasfitting, Drainage, Blocked drains, Jet blaster, CCTV

SECOND GENERATION PLUMBER WITH
OVER 28 YEARS EXPERIENCE

Steven Zouroudis Ph: 0422302159

Lic-183316C



ARTS NEWS

The Wollombi Valley Arts Council encourages and fosters all kinds of artistic and cultural expression within the Wollombi Valley in order to support and promote artists and our community.

Our next exhibition...

‘WANGAAYPUWAN NGURRA’

An exhibition by Maddy Hodgetts and friends - Allirra Moore, Sarah Gordon & Kayleb Waters-Sampson.

11 - 27 February, open Fridays - Sundays 10am - 4pm at The Old Fireshed Gallery.

Maddy Hodgetts

Maddy is a Ngiyampaa and Wiradjuri woman whose cultural connections are centred around Central and Western NSW. She has developed her own style depicting Ngiyampaa country and its stories, and is passionate about using traditional styles including lines and stick figures, and yellow, white and earthy tones. Experiences of culture and family have instilled in Maddy the importance of caring for mother earth and each other, and an appreciation and respect for her family, culture and country.

Sarah Gordon

“My name is Sarah Gordon, I’m



a Ngemba woman that grew up on a property on the banks of the Bogan River near Brewarrina N.S.W.

As a child I was surrounded by learning and dreaming, taught to me by my father and the country of my people. Learning about story, animals, country, painting, bush foods and bush medicines. Currently living in the Pilliga scrub on Gamilroi country outside of Coonabarabran NSW, I get inspiration everyday from the beauty of the country that surrounds me that I’m lucky enough to walk on.”

Allirra Moore

Allirra Moore is a proud Yuin woman from Jervis Bay, and grew up on beautiful Darkinjung country, NSW Central Coast. Allirra has been painting since she was 10 and began selling her art at the Blak markets in Sydney at 16. She shares her personal stories which are inspired by landscapes, people and her connection to country. Over the last few years Allirra has had the opportunity to commission pieces for a variety of organisations on the Central Coast, and YMCA Australia.

Kayleb Waters-Sampson



P&S WILLIAMS T/A

CENTRAL COAST TRACTORS P/L

Tractor & mower service, repairs & parts
 Parts for all brands
 Tractor accessories
 Implements, blades and spares

Leading brand of Lubricants

Agricultural Supplies, Plumbing & Fittings

Tractor School
 Safety, Operation, Implements & attachments
 Maintenance & servicing

General Engineering
 Modifications & fabrication, Welding









Hardi Jarrett Southern Cross Kanga

Kiotti's parent company, Daedong Industrial Co Ltd, has led the way in developing world-class farming machinery for many decades. Today Kiotti/Daedong products have a secure global market across 60 countries.





**DISTRIBUTOR FOR KIOTTI
TRACTORS AND MOWERS ON
THE CENTRAL COAST**

www.centralcoasttractors.com.au

enquiries@centralcoasttractors.com.au

Tel: 4372 1457

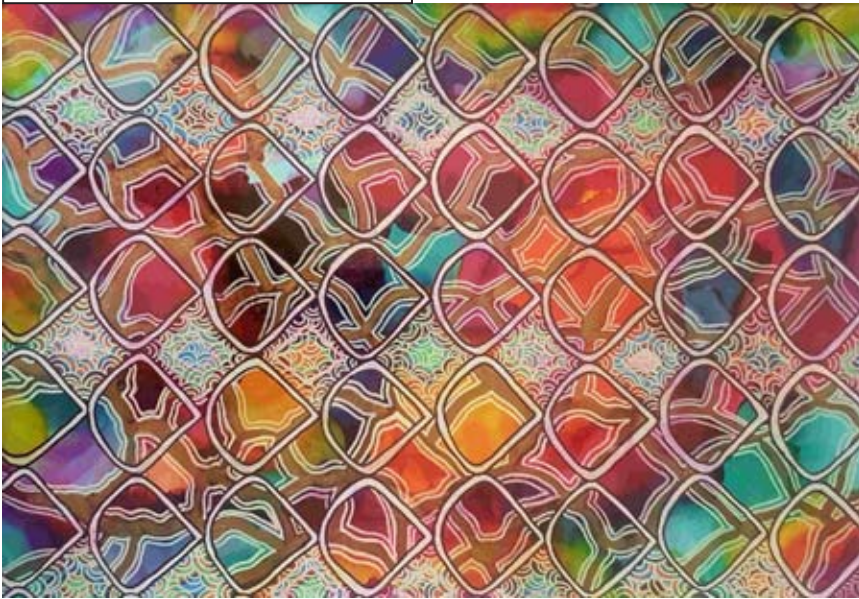
Fax: 4372 1495

Kayleb is a Gomeroi man who comes from Caroonna mission (Walhallow). He has been practicing art and culture since he was a young boy.

The Annual General Meeting (AGM) of the Wollombi Valley Arts Council will be held at 3pm on Sunday 6th March 2022 in the courtyard behind The Little Yengo Gallery, followed by a General Committee Meeting. All welcome.

Please visit our website www.wollombi.org
Wollombi Valley Arts Council Inc

Sarah Gordon - 'Reflections of Waaway - Rainbow Serpent' - Ink & acrylic



A Tribute to Cheffy

In honour and memory of a dear friend and mentor to many, Chef Milad Gabriel. Milad, fondly known as Cheffy, very sadly passed away on January 25th 2022. Way too soon.

Cheffy lived and worked in our community for many years, heading up the kitchen at Kulnura General Store. He was a kind and gentle man, a funster with a cheeky twinkle in his eye! Cheffy was passionate about creating tasty, traditional food and he

inspired many along the way. Over the years he mentored numerous staff in the Kulnura General Store kitchen (some keener than others!), sharing his recipes and particular passion for Lebanese food, his national cuisine.

Prior to his arrival on the mountain, Cheffy ran a string of successful hospitality businesses in Sydney.

He enjoyed life and what it had to offer... especially the "big smoke"! He visited Sydney often and had many



friends there.

Cheffy, we will miss your smiling face, your generosity and of course, your delicious food. But most of all we will miss you!

Thank you for your service to our community. Until we meet again, enjoy that big kitchen in the sky!

Kerri Jones

we're a digital marketing agency based in Mangrove Mountain.



asdigital.com.au

AS DIGITAL

02 9158 3889

ALL ASPECTS OF TREE WORK



- Truck & Chipper
- Cherry Picker
- Excavator

Local Arborist, friendly & experienced team.
Insured and certified.
Tree removals, pruning, emergency work.

Tim - 0412 985 422 or tijanotreco@gmail.com

RURAL INSURANCES



If you're in need of assistance with your insurances give Shortland Insurance Brokers a call!

4324 5244

info@shortlandinsurance.com

Level 2, 27 Dane Drive GOSFORD

Quote the codeword: "MOUNTAIN" for special offer



Free community information sessions

Creative Recovery is a specific approach used to support individuals and communities after a disaster by creating physical and mental spaces where people feel safe and connected to one another. Learn more about the Creative Recovery approach at our free community information sessions.

Why Creative Recovery?

Following disaster, creative community projects can be a powerful platform for people to express grief, frustration and loss, as well as compassion and connection. Culture and the arts play a deep, real role in supporting communities and individuals to tackle disaster recovery.

Some examples of Creative Recovery in action are the Yarn Hub at The Hub Café in Mangrove Mountain, and the creation of the 'Why Spencer' artwork by the river at Spencer.

Who can participate?

You don't need to be 'creative'—we're just looking for anyone who is open to learning about the Creative Recovery approach, and who is interested in supporting their community and looking to make connections.

Community information sessions locations and dates

Free entry, tea/coffee/snacks provided

Mangrove Mountain

Friday 25th February 11am–12 noon

Mangrove Mountain Hall
2 Waratah Road, Mangrove Mountain

Yarramalong

Saturday 26th February 10–11am

Yarramalong School Community Centre
1560 Yarramalong Road, Yarramalong

Spencer

Friday 11th March 10–11am

The Hawkesbury Duck
4685 Wisemans Ferry Road, Spencer

Bookings essential. To book your place:

Contact Breanna Pollock on 0419 014 446
or email breanna.pollock@centralcoast.nsw.gov.au



Australian Government



Presented by
Central Coast Council

Jointly funded by the Commonwealth and
the NSW State Government under the
Disaster Recovery Funding Arrangements

LAND ONLY



For Sale

25 Goldsmith Road, Somersby

25 acres

Stunning and unique 25 acre lot.

Build your rural paradise in the tightly held suburb of Somersby, with the ultimate mix of tranquillity and convenience. Just 5 minutes from the M1 on ramp and 10 minutes from major Central Coast facilities is this exceptional 25 acre lot, featuring two large cleared areas totalling approximately 9 acres, separated by a delightful shallow rainforest ravine.

The eastern most area is approximately 4 acres of flat land gently tilting to the North. It is surrounded by mature native vegetation for a great feeling of privacy.

Just a few metres through the rainforest and we arrive at the second, large cleared area of about 5 acres, again an ideal building location or use for grazing.

Somersby is famous for its well draining sandy loam soil, sought after for supporting horticulture or other agricultural and livestock pursuits.

There are two entrances to the property, each along newly surfaced private roads.

A DA has been granted for construction of a substantial home and pool and a large shed with mezzanine flooring.

Inspections can be arranged at any time and further information is available by calling

Tony Gilmour 0400 723 193 or **Kate Kerslake** 0427 233 090.

Office Address:

Suite 1,
2/872 Pacific Highway
Lisarow NSW 2250

P: (02) 4324 8486

E: info@ccselect.com.au

Contact one of our agents | CALL 02 4324 8486



www.ccselect.com.au

Sold

\$4,300,000

**SUBURB
RECORD**

30 Fern Tree Lane, Palmdale
5 beds 3 bath 3 car



The Central Coast acreage real estate market is the hottest it has ever been! Do you know the NEW value of your home?

Download our FREE Acreage Sales Report

Tyson Nicholson 0418 251 312 tyson@thepropertymarket.com.au thepropertymarket.com.au





Past. Present. Future.



Scan now
for FREE
download

The
Property
Market

INTERNATIONAL WOMEN'S DAY 2022: "EQUALITY TODAY FOR A SUSTAINABLE TOMORROW".

This year The International Women's Day Expo will be held at The Entrance Community Street, Norberta Street, The Entrance on 5 March. Many prominent women's organisations including Zonta, Soroptimist International, Community and Business Women's Network and CWA of NSW, who are celebrating their 100 year birthday this year, will provide information on their work in the community. There will be Zumba classes, a yarnbombing exhibition, music and an Artisan Market which is a must see for anyone interested in quality articles. We have something for everyone from cakes to candles to cards and many more including CWA scones!

The Festival of Women will commence 1 March with a Lunch hosted by Bateau Bay View Club at The Entrance Leagues Club from 10:30 am. The Community and Business Network are holding a lunch at Ettalong Diggers 4 March 12pm to 2pm. In the evening we will celebrate the launch of The Expo, Festival of Women and the prestigious Central Coast Women in Art Exhibition presented by Tuggerah Lakes Art Society at The Entrance Community Centre. The exhibition will run 5 – 17 March with many of the exhibits available for sale.

Soroptimists International will hold an International Women's Day Breakfast 6 March to be held at the Breaker's Country Club from 8:45 am with a guest speaker, Deborah Wallace. 6 March Making Meditation Mainstream will host an International Women's Day Ocean Beach meditation



session at Ocean Beach Surf Club Umina from 6:20am for a 6:30am start. Everyone is welcome.

The Community and Business Network are holding a second event – International Women's Day Breakfast 8 March at Mercure Kooindah Waters Central Coast, Wyong starting at 7am. The Central Coast Community Women's Health Centre will celebrate #Choose to Challenge 8 March to be held at Red Tree Theatre at Tuggerah from 10am to



Services:

- Site Levelling
- Land Clearing
- Horse Arenas
- Roadways
- Certified Fill Material

Machines:

- Excavators / Augers
- Posi Track with Laser Level Grader
- Dozer
- Truck & Trailer Tipper

Michael Schembri
0419 236 788

Follow us  



thinkwater.
PEATS RIDGE

AGRICULTURE • COMMERCIAL • RURAL • INDUSTRIAL

Australia's Leading Water Solutions Network

- ◆ Water Treatment
- ◆ Irrigation Systems
- ◆ Mowers & Ride-Ons
- ◆ Fire Protection Systems
- ◆ Water Tanks

- ◆ Pump Systems
- ◆ Fertigation
- ◆ Pipes & Fittings
- ◆ Chainsaws & Generators
- ◆ Repairs

Ph 4373 1466

780 Peats Ridge Road, Peats Ridge

www.thinkwaterpeatsridge.com.au

2pm. This is a free event, but you will need to book.

The All About Women will be live streamed 13 March from the Sydney Opera House at the Red Tree Theatre Tuggerah 10:45 am to 4:40 pm hosted by the Elderslee Foundation. This is a free event to anyone who would like to attend but bookings are essential. Details are on our Facebook page listed below.

There are many other events to be held across the Coast from the Woy Woy Peninsula, to Gosford, Wyong, and The Entrance. Information regarding these events will be placed on the Central Coast Festival of Women calendar with the events, venues, times, and contact details.

Extra information is available on the Festival Facebook page [https://www/facebook.com/ccfestivalwomen/](https://www.facebook.com/ccfestivalwomen/)

Margaret Heathcote



OPEN 7 DAYS
40 YEARS LOCAL



General Dentistry | Emergency Care | Cosmetic Dentistry
Orthodontics & Invisalign | Dental Implants | Oral Surgery
Sleep Dentistry IV Sedation | Wisdom Teeth Removal
3D CT Scanning | CEREC same-day ceramic restorations

02 4323 1933 | www.vcdental.com.au

Suite 10, 36-40 Victoria Street, East Gosford NSW 2250

NEW PATIENTS

Comprehensive checkup & clean
Includes up to 5 x-rays
No Gap (with health insurance) or \$290

OFFERS (all patients)

Free orthodontic consultation
Free dental implant consultation
Free cosmetic makeover consultation
Sport mouthguards: **No Gap** or \$99

FINANCE

We bulk bill the Medicare CDBS
Zip Pay & Zip Money payment plans
We partner with SuperCare

*Join Your
Community
for*

**CLEAN UP
AUSTRALIA
DAY**

SUNDAY 6th MARCH
9am to 12
Bucketty Fire Station

4WD Backhoe For Hire

General Backhoe Work

- Clear Fallen Trees
- Fire Hazard Clearing
- Scrub Clearing
- Stump Removal
- Animal Burials
- Paddock Clearing

- 300mm Digging Bucket
- 600mm Digging Bucket
- 1200mm Mud Bucket
- Extender Hoe
- Lifting Lugs & Forks

Ph: 4376 1065
Mob: 0419 129 960
Dean Carter

SHEDS. MADE. TOUGH.
By locals for locals

www.shedshomes.com.au Phone: **02 4322 0351**
centralcoast@shedshomes.com.au

CUSTOM DESIGN | BUILDINGS | EXTENSIONS | ALTERATIONS | DECKS |

0410 100 616 | kim@kdfconstruction.com.au | LIC NO. 267735C

KULNURA AND DISTRICT GARDEN CLUB

This is a short and sweet note in between meetings to remind you that membership of the Kulnura & District Garden Club is open to all and a great way to meet like-hearted others who love gardens. You don't have to be a gardener to join KDGC, you just need to have an appreciation and love of plants, or plant-people, or beautiful outdoor spaces. We are a friendly, happy bunch who gather monthly to generously share tips, advice, cuttings, stories, and delicious morning teas.

Membership is \$25 per year, which includes a name badge, and a subscription to "Our Gardens" magazine, published by the Garden Clubs of Australia and edited by Judy Horton, OAM.

We meet on the second Monday of each month at 9:30am for a 10am start and after an efficient and interesting meeting, share morning tea, conversation, and a garden walk / talk till noon.



Big Jim's Lawnmowing

0405 178 197

- **Acreage**
- **Residential**
- **Edging**

James Morgan - 0405 178 197

Meetings are held in beautiful surroundings and give members an opportunity to see a variety of stunning gardens in different locations throughout the year.

Our next meeting will on Monday 14th March, at 9:30am.

Guests are always welcome.

Please email kulnuradgc@gmail.com for information about meetings,

membership, or any other questions, or feel free to call Jacqui on 0455 364 262

Looking forward to meeting you in a garden soon!

Karynne Courts
(KDGC Committee member, 2022)

Photos: Red flowering gum
(*Corymbia ficifolia*)



On The Go Constructions Pty Ltd
Specializing in the building of chicken sheds

Charlie Muscat is well known in the Industry, with over 12 years experience and has a reputation for quality workmanship.

- * New Chicken Sheds * Tunnel Conversions * Roofing
- * Machinery/Farm Sheds/Stables/Lofts/Piggeries * Coolrooms
- * All Fabricating services - All frames & trusses are fabricated by On The Go Constructions to Engineer specifications.

Call Charlie on 4374 1114 or 0408 684 719

VISION FOR LIFE...
For all your concrete & pumping services, call Louis on 0418 409 576

LYNWOOD PRESS
Your local printing service

All types of SIGNAGE...

- ≈ Flexible Banners, Self Adhesive Vinyl
- ≈ Outdoor & Indoor, Backlit
- ≈ Stands, Flags, Retractable, Posters

Ph/Fax: 4374 1039 Mob: 0412 669 649
Email: cnews@k3s.com.au

Amended Code of Meeting Practice Proposed by Council

Proposed amendments to the conduct of Council meetings could limit community participation and create difficulties for Councillors (when council elections are eventually held).

Some of the proposed changes are:

- Limit on number of Notices of Motion to one per Councillor per meeting
 - Limit on complexity and number of Questions with Notice to one per Councillor per meeting
 - Only three days notice to Councillors of Ordinary Council Meetings.
 - Potentially, the public may get even less notice.
 - A Councillor is limited to submitting one Notice of Motion per Ordinary meeting
 - A Councillor is not permitted to ask a Question with Notice that comprises a complaint against the Chief Executive Officer or a member of Staff of Council, or a question that implies wrongdoing by the Chief Executive Officer or a member of Staff of Council.
 - A person may apply to speak on no more than two items of business on the Agenda of the Council Meeting
- Information from Council Website & Proposed Amendment Document*

Mangrove
Friendship Group

Coastlink
Living your way

Group fun and support for our ageing friends

Our Friendship Centre gives you an opportunity to meet other people in the community, make friends and have some fun.

With transport to and from the centre and in the community, we can help you help you live your life your way.

- ❖ Community Access
- ❖ Centre Based Supports
- ❖ Morning Tea and Cafes
- ❖ Home Cooked Lunch in Centre
- ❖ Luncheon Outings
- ❖ Games and Puzzles
- ❖ Theatre Trips
- ❖ Shopping Trips
- ❖ Dancing and Singing
- ❖ Nursery Visits

For all enquiries:
Phone Terri on 02 4321 1022 or email info@coastlink.org.au

Kulnura Computers Supplies & Services
4373 1237

- ❖ Custom Built Computer Systems for the Home - Office - Extreme Gaming
- ❖ Computer Repairs - Virus removal
- ❖ Upgrades
- ❖ Software - Accessories
- ❖ Electronic components

PJC CONTRACTING
PROPERTY MAINTENANCE

- ◆ Gutter Cleaning
- ◆ Window Cleaning
- ◆ Pressure Cleaning
- ◆ House Washing
- ◆ Chimney Sweeping
- ◆ Handyman Work

Family Run Business
30+ Years of Trade Experience
Fully Insured - Free Quotes

Paul - 0403 044 400
pjcontracting101@gmail.com

WANTED
DEAD OR ALIVE

Cars | Bikes | Boats | Tractors | Forklifts
Ride-On Mowers | Machinery | UTV | ATV
Caravans | Old Signs | Oil Cans

REWARD OFFERED
PHONE: 0408028908
www.yourtrashourgold.com.au

Proud Supplier of ENIRGI BATTERIES on Mountain

Southern Diesel Services
ROAD, CIVIL AND AGRICULTURAL REPAIRS

Workshop / Mobile 24 HRS
Mangrove Mountain

Engine Control Units, Engines, Gearboxes,
General Maintenance, Hydraulics

Mitchell Crane
PH: 0431 095 365

LIVESTOCK MARKET REPORT



Maitland Liveweight Sale 7th February 2022

450 cattle yarded comprising 410 trade/yearlings and 40 export cattle. Good yarding today of Angus weaners and a good run of Angus feeder steers.

- Restocker steers up to 250kgs 650 to 960c/kg, avg 805c/kg;
- Restocker steers 250-300kgs 580 to 790c/kg, avg 698c/kg;
- Restocker steers +300kgs 578 to 710c/kg, avg 635c/kg;
- Restocker heifers 250-300kgs 550 to 725c/kg, avg 685c/kg;

- Restocker heifers +300kgs 560 to 660c/kg, avg 595c/kg;
- Feeder Angus steers 380-500kgs 560 to 620c/kg;
- Yearling steers 560 to 700c/kg;
- Yearling heifers 550 to 660c/kg;
- Grown steers & bullocks 350 to 455c/kg;
- Cows 300 to 375c/kg;
- Bulls 260 to 370c/kg.

Maitland Liveweight Sale 31st January 2022

Total of 350 head yarded at Maitland today. All regular buyers were in attendance for a mixed quality yarding of 330 vealers and 20 export cattle.

- Restocker steers 180-250kgs topped at 825c/kg, avg 730c/kg;
- Restocker steers 250-300kgs topped at 765c/kg, avg 674c/kg;
- Restocker steers 300-350kgs topped at 695c/kg, avg 620c/kg;
- Restocker steers 350-500kgs topped at 715c/kg, avg 555c/kg;
- Restocker heifers 180-250kgs topped at 775c/kg, avg 695c/kg;
- Restocker heifers 250-300kgs topped at 710c/kg, avg 650c/kg;
- Restocker heifers 300-350kgs topped at 655c/kg, avg 605c/kg;
- Restocker heifers +350kgs topped at 586c/kg;
- Steers 500-600kgs 380 to 540c/kg;
- Cows 290 to 350c/kg;

- Bulls 270 to 500c/kg.

Highlights: Angus steers 359kgs, 715c/kg sold for \$2,639; Simmental x Angus steers 568c/kg, 445kgs sold for \$2,528; Angus x Santa steer weaners 690c/kg, 311kgs sold for \$2,148.

Maitland Store Cattle Sale 15th January 2022

800 head of cattle yarded at this sale. The quality and condition was very good overall with a good lineup of female cattle. The market trend was very strong from start to finish with bullocks topping at \$2,500 and bobby calves, 2mths old at the end selling for \$725. Buyers attended from the local area, Central Coast, Upper Hunter & Manning regions as well as Coonamble & Bathurst.

Steers:

- Weaners: 200 head; 4mths – 12mths; \$1,650 to \$2,350; Avg \$2,000; Trend +\$30; Top \$2,350
- Yearlings: 70 head; 14mths – 18mths; \$2,000 to \$2,525; Avg \$2,325; Trend +\$30; Top \$2,525
- Grown: 20 head; 18mths – 3yrs; \$2,300 to \$2,500; Avg \$2,400; Trend firm; Top \$2,500

Heifers:

- Weaners: 150 head; 4mths –

Your LOCAL GUY for:

- Fixed 4G Internet
- CCTV,
- WiFi,
- & more.



STARLINK IS HERE
WE ARE NOW INSTALLING
STARLINK INTERNET, AND
VAST TV SATELLITE
SYSTEMS.

CALL ME TO DISCUSS

Master Security License:
101264
Open Cablers License:
55883
Insured PI & PL.
Over 30 years In business.
Techniport Pty Ltd T/A
CLOUD SECURITY
Call WARREN 0407 366 444



Solicitors & Attorneys

Solving legal problems effectively and efficiently for the Coast and Mountain communities for over 20 years

- Conveyancing
- All insurance claims
- Driving offences
- Wills and probate
- Council and building disputes

98 Mann Street, Gosford 4322 6666
25 Alison Road, Wyong 4353 1248

NSW Law Society Accredited
Specialist since 1996

CBD LAW
Solicitors & Attorneys



Resource Recovery | Plant Hire | Site Remediation

Roads | Shed Pads & Sites | Dams | Council Approved Clean Fill

CALL 0408 843 677

admin@diversetradingaustralia.com.au

- 12mths; \$1,500 to \$2,700; Avg \$2,020; Trend +\$40; Top \$2,700
- Unjoined: 100 head; 14mths – 16mths; \$2,300 to \$3,100; Avg \$2,550; Trend +\$60; Top \$3,100
- PTIC: 25 head; 16mths – 18mths; \$3,000 to \$3,750; Avg \$3,500; Trend +\$50; Top \$3,750

Cows:

- Cows & Calves: 180 head; 2yrs – 10yrs; \$2,500 to \$5,800; Avg \$3,800; Trend +\$50; Top \$5,800 – Record price
- PTIC: 50 head; 2yrs – 10yrs; \$2,700 to \$3,700; Avg \$3,054; Trend +\$100; Top \$3,700
- Joined: 25 head; 3yrs – 10yrs; \$2,000 to \$3,500; Avg \$2,650; Trend +\$50; Top \$3,500

- Unjoined: 10 head; 3yrs – 10yrs; \$1,900 to 2,600; Avg \$2,200; Trend +\$40; Top \$2,600

Highlights include: – A/c Weirick & Senn, Congewai sold an outstanding yard of Angus heifers & calves for \$5,800 to Craig Kennedy. That sale was a record for Maitland Saleyards; A/c B Lonsdale & L Gregory sold a yard of Angus heifers 14-15mths, unjoined for \$3,100 to Kent Sansom of Nelson Plains; A/c Ups & Downs Pastoral Co (property sold) sold their herd of Angus cows & calves topping at \$5,100 to average \$4,690; A/c Jenny Douglas, Dungog sold a line of Angus steers, 12mths topping at \$2,300; A/c Alderley Creek Farm, Clarence Town sold a line of Angus weaner heifers,

11-12mth for \$2,700.

Next Monday Liveweight 14th February – 200 one mark vendor bred Angus steers

Next Gloucester Store sale – Thursday 17th February 2022 at 11am

Next Maitland Store sale – Saturday 19th February at 12pm

Don't forget to like and share our Facebook page!

Keep up to date with bowelidbury.com.au

Michael Easy & Rodney McDonald
Bowe & Lidbury
52 Kyle Street, Rutherford NSW 2320
P: 02 4932 7066



Complete Building Repairs

- general carpentry
- structural rectifications
- excavation

call 0418 112 630

CENTRAL COAST
TERMITE REPAIRS

FILMOR ELECTRICAL

Lic. No. EC37248

Commercial, Industrial
Domestic

24 Hour Service

Phil Moore
Phone: 4372 1200
Mobile — 0407 239 920

ABN 60 003 402 364



LYNWOOD PRESS

Your local printing service



- ∞ Flyers
- ∞ Booklets
- ∞ Labels
- ∞ Business Cards
- ∞ Stationery
- ∞ Duplicate Books

∞ Banners, Signs & Displays

All Types of Printing
Design Service, Scanning,
Colour Copying up to A3



Ph/Fax: 4374 1039 Mob: 0412 669 649
Email: cnews@k3s.com.au

Publishers of the "Community News"

WARD Septics

Septic Tank Cleaning

- * Small Pump Out Truck with Plumbers Jetter attached for clearing blockages in sewer pipes.
- * Truck carries water to run Jetter
- * Water Tank Cleaning

*** And Even Cheaper Rates For You With A Neighbour**

Call Paul For More Info
0438 315 514

 **SepticCleaning.com.au**

REGULAR ACTIVITIES & MEETINGS

RURAL FIRE SERVICES

Bucketty RFS	Weekend Training Station Maintenance General Meeting	3rd Sat, 9am-12 pm, breakfast 8.30am Every Thurs as required, generally 10am-1pm 3rd Sat in even months, at 1pm, All welcome buckettyrfs@gmail.com (02) 4998 8130
Calga-Mt. White RFS	General meeting	3rd Monday of the month, 7.30pm at Pacific Hwy Fire Station Mt. White
Kulnura VBFB at Greta Rd Station	General meeting Training	1st Wednesday of the month, 7.30pm 3rd Wednesday of the month 7.00pm
Mangrove Mountain RFS Bloodtree Rd	General Meeting Training / Maintenance	Last Wednesday of the month, 7 pm, All Wednesday's except last of month, 7 pm
Spencer RFS	General Meeting Training Junior Training	2nd Monday of the month Meeting 6.30pm 3rd Monday Maintenance 6:30pm 4th Monday Training 6:30pm E: captain.spencer@ccrfs.org.au Alison Wade 0415 668953. 4778 Wisemans Ferry Rd
Somersby RFS	General Meeting Training/Maintenance	First Wed of the month 7.30pm at the Station Every Wed night 7.30 at the Station (except before Wed general meeting)
Yarramalong RFS	Training: Nights: Morning: Maintenance/Training : General Meeting (GM): Contact:	First Wednesday of month 7pm start Last Saturday of month 8.30am start 3rd Sunday of month 8.30am start 2nd Wed of even months 7.30pm start Ph: 0409 915060 or 0418 280 764 Email: yarramalongrfs@bigpond.com

COMMUNITY & SOCIAL

Coastlink Friendship Group		Wed 9.30am-2pm at the Health Centre, Nurses Rd, Central Mangrove
Country Women's Association (Somersby)		Second Wed of each month, at Somersby Hall Wiseman's Ferry Road, Somersby, contact Sue, 43721280 or 0407768000.
Country Women's Association (Peats Ridge & District)		First Monday of the month at Community Hall, Peats Ridge School. Any enquiries please contact Christine 0419 400163.
Country Women's Association (Mangrove Mountain Evening Branch)		2nd Tues of the month at Mangrove Mountain Hall 2-4 Waratah Rd Mangrove Mtn. Start 5pm, meeting 7pm. Ph Judy 43771728
Gosford North Inner Wheel club		2nd Wed each month 7pm at Phillip House in Kariong. Contact: Glenis Ph: 0400 486 760
Gosford World Vision Community Group		4th Tues 11am in Presbyterian Church, West Gosford Contact: Glenis Ph: 0400 586 760.
Permaculture Central Coast		Third Tuesday (except Jan.) at Tuggerah Community Hall, ANZAC Rd, 6.30pm - 9pm
Kulnura & District Garden Club		Second Monday, 9.30 for 10am start. Jacqui Maxwell 0455364262 kulnuradgc@gmail.com
Mangrove Mountain & Districts Community Group Meeting		1st Thurs of the Month, 8pm, Mangrove Mtn Hall. Danny Willmott 0407275653
Mangrove Emergency Planning & Communications Committee		Contact: mepccinc@gmail.com, 0412669649
Mangrove Mountain Country Fair Committee Meeting		2nd Thur of month except Jan, 7:30pm, Union Church Hall. Pres- Shane 0417 436 529
Mangrove Mountain RSL Women's Auxiliary		Third Tuesday of the month, 2pm Mangrove Mountain Memorial Club New Members welcome. Secretary Keitha Coty 43771773
Mountain District Football Club Meeting		Second Tuesday of the Month 6.30pm at the Mangrove Memorial Club
River Cares for the Lower Hawkesbury River District		President Robyn Downham 0414248224 Email rivercaresinc@gmail.com
Rotary Club Meeting		Friday 7.15am at Phillip House. 43404529
Spencer Community Progress Group Inc		President Brad Maisey, Community Meetings, 4377 1167, spencercpg2@gmail.com
Spencer Community Ladies Social Club		Last Fri of month. 12.00 noon Spencer Community Centre, Jennifer Dayes 4377 1364 Articles to: spencercpg2@gmail.com
The Mountain Tuesday Social Tennis Group		Tue 9.30am-12.30pm, Kulnura Tennis Courts. Enquiries: Alison Palmer 0427731548.
Somersby Equestrian Club Club & Committee Meeting		Every 2nd month. Check website for further details. www.somersbyequestrianclub.org.au
Wisemans Ferry Community Men's Shed		Tues & Sat. 9am-5pm. Contact: Alan Hunt 4566 4626 or Adrian Acheson 0448 833 781
SPIRITUAL		
Anglican Service - Mountain Districts		Every Sun 8am at Peats Ridge Scout Hall, Sunday School during school terms
Mangrove Mountain Union Church, Christian Service		9.00am second and fourth Sundays. cnr Bloodtree Rd & Wisemans Ferry Rd
St Barnabas Non-denominational Service Yarramalong		3rd Sunday each month, 11.00am. (Easter & (Christmas Carols dates to be advised)
Divine Retreat Centre (Ph 04 6848 6782) 160 Hensons Road, Somersby www.divineretreatcentre.org.au		Daily Holy Mass 8.00am to 8.30 am 1st Fri, 5:30pm-8:30pm Divine Mercy Friday 1st Sat, 5.30pm-9:00pm, Divine Youth Ministry, Young Adults (18-35yrs) Last Sun, 9am-4pm, One Day Retreat

(cont'd next page)

Community Strategic Plan (CSP) - Community Reference Group

Expression of Interest
Help shape the future of the
Central Coast

Central Coast Council is seeking Expressions of Interest from people who live or work on the Central Coast to be members of a Community Reference Group to provide advice and guidance on the Revised Community Strategic Plan (CSP) and Delivery Program 2022-2025 (including the Operational Plan 2022-23).

The CSP represents the highest level of strategic planning undertaken by a local council and it identifies the main priorities and aspirations of the community. Council has a custodial role in engaging, refining and preparing the plan on behalf of its community and chooses to include the community in this process.

The inaugural CSP, One – Central Coast, was endorsed by Council on 25 June 2018. Since its adoption Council's financial situation has significantly changed and the CSP needs to reflect the community's sentiment and acknowledgement of Council's financial responsibility on behalf of the community.

A Revised CSP and new Delivery Program (including Operational Plan) have been developed and now require input as to whether these capture the community's thoughts on the financial situation accurately.

.:KSR.:.

NEW

GRAVEL

ROADBASE

\$33/T

DELIVERED

0411 868 437

Council is now seeking Expressions of Interest from people who live or work on the Central Coast to become members of a Community Reference Group to provide input that will influence further changes to these plans, helping ensure that the voice of the community is heard and considered.

We would like to hear from individuals who:

- live or work on the Central Coast.
- have a good understanding the region and an interest to make it better.
- have an interest in social, economic and/or environmental issues.
- have links to active community networks.

The community are invited to:

- view the Terms of Reference document
- view the Request for Expression of Interest document
- complete the online Expression of Interest form

EOI applications will be accepted until 5pm Friday 18 February 2022
Central Coast Council

WANTED!

Old or Unwanted Ride-on Mowers & Quad bikes

I am willing to buy that mower that you just dont need anymore and is filling up your shed!

Contact James Morgan
 on **0405 178 197**



REGULAR ACTIVITIES & MEETINGS (cont'd)

Serbian Orthodox 2nd & 4th Sun. of the month. 10 am, followed by luncheon, tea, coffee, cakes (cost \$15). George Downes Drive, Peats Ridge

Kariong Community Baptist Church Sun @9.30am, Church & Kid's Program, Kariong Public School Hall, Chris Clarke email revcrc@hotmail.com

Catholic Service -Spencer Holy Trinity Church, 2nd Sat of the month 4pm, Contact 43771374 or 43771168 as times may change each month.

- Wollombi 2nd & 5th Sunday of the month, 4.30pm Mass at St Michael the Archangel, Wollombi.

- Somersby Every Sat. evening vigil - 5.30pm St. Francis of Assisi Centre, 30 Lutana Rd, Somersby.

- Yarramalong 1st Sunday each month, 11.15am St. Barnabas Catholic Mass All welcome. Enq 4356 1321

YOUTH

Junior Girl Guides 5-10 Kooree Guide Cabin, every Monday in school term, 5.00pm - 6.30pm

Girl Guides 10-15 Kooree Guide Cabin, every Monday in school term, 6.00pm-7.30pm

Scouts, Cubs & Venturers Peats Ridge Scout Hall Cubs meet 6.30pm - 8.30pm Wednesdays Scouts meet 7.00pm - 9.00pm Tuesdays Venturers meet 7.00pm - 9.00pm Mondays Contact 0438 476 562

Mangrove Mountain Playgroup Every Tues (except school holidays) 9am to 11.30am, Kooree Guide Cabin, Bec G, PH: 0421 996 029 Anne, PH: 0412 526 557 Email: becilmour@gmail.com

HISTORICAL

Brisbane Waters Historical Society 25-27 Henry Kendall St., West Gosford, Ph: 4325 2270. www.henrykendallcottage.org.au

Dharug & Lower Hawkesbury Historical Society Inc. Last Sat of month. All welcome, contact Jan Kofron 0405321478 jankofron@optusnet.com.au

First Fleeters Central Coast Chapter 2nd Sat of the month, 10.00am for 10.30, Point Clare Hall (except Jan & Dec). Contact Jon 43116254 and Gavin 43404435.

The Pearl Beach Aboriginal History Group 3rd Fri each month 7.30pm Pearl Beach. Peggy 0411754577 pbaboriginalhistory@gmail.com

Wyong District Museum & Historical Society Open Sun to Thurs, 10am-2pm, other times by appt. Contact 43521886 email info@alisonhomestead.com.au. website: www.alisonhomestead.com.au

ACTIVITY/HOBBY

Central Coast GNU/Linux Users Group www.cclug.org.au - all most welcome

Coastal Communicators Toastmasters 1st & 3rd Thurs of month, 6:45pm to 8:45pm at Doyalson-Wyee RSL, Debbie 0421216952

Craft/scrapbooking Yarramalong Hall 4th Sun. of the month 10am to 5.00pm cost \$12 per person ph 43561196

HALL BOOKINGS

Kulnura Hall Hall bookings contact Annette Stackman 43561196 Committee mtg 3rd Thurs 7:00pm at Hall- Open to all from community.

Mangrove Mountain Hall Hall bookings Ryan Howard 0405416289

Somersby Hall and Mountain Districts Culture and Heritage Centre Hall Bookings: 0413 359 655 or AH 4373 1488

Yarramalong school of Arts / Hall booking contact Annette Stackman 43561196

REMINDERS FOR YOUR DIARY

Yarramalong school of arts AGM February 8th 7:30pm, All welcome.

Riding For The Disabled Volunteer Saturday 26th February, 10am, Kangoo Road Somersby

Mountain Children's Community Centre Grand Opening, Sunday 27th February 2022 10am - 1pm, 2829 Wisemans Ferry Road, Mangrove Mountain,

Antennas - Digital

Hayward Video & Antenna Service

VAST Satellite Service
 "Government approved installer"

Phone Ray Hayward

Mob: 0412 685 555

20 Sierra Crescent, Gosford East
 Email: rayhay@bigpond.net.au



TRUCK LICENCES

ONE DAY COURSES
 LR through to MC
 No RTA Test

No stress!!

If required, 2nd Test is free

Phone: 042 88 444 18

Mountain community children's centre Inc.

Dear Family, Friends and Community of Mountain Community Children's Centre,

After thorough consideration, our Management Committee has made the difficult decision to cancel our Grand Opening Celebrations that were scheduled for Sunday, February 27. With the current Covid-19 variant being so transmissible, the decision was reached to protect any visitors and guests, as well as our children and their families. We are disappointed about not being able to celebrate our Grand Opening as planned but have made this decision to avoid any unnecessary risks to our community during this ongoing Covid-19 outbreak.

Because we have rescheduled this event several times already, we will mark the occasion of opening our new Centre with a small outdoor ceremony but as a closed event without any external visitors and guests. We will share this good news story with you all in the local Community News.

We will be celebrating Mountain

POSITIONS AVAILABLE

WATERMANS EXCAVATIONS is seeking a highly experienced and motivated excavator/machine operator to join our growing team.

Our requirements are as follows:

- Minimum of 5 years' experience and related certifications.
- A HR license
- Ability to work overtime, when required
- Able to work independently and meet deadlines.

To apply for this position, please email a copy of your resume to admin@watermansexcavations.com.au or call on 0431956445

DELIVERY DRIVER for deliveries in local area. Up to approx 10 hours / 2 days per month. Must be reliable & punctual, have own reliable vehicle, current drivers licence and good driving record. Phone 0412 669 649

Community Children's Centre's 40th birthday in 2023 and we wish to acknowledge you and all our distinguished guests at this event, when hopefully covid restrictions will be a thing of the past!

Apologies for any inconvenience the cancellation of our Grand Opening may have caused. We look forward to welcoming you to celebrate our Centre and community in the near future.

Kind regards,

Hannah Jahn

Administration Officer

*Mountain Community Children's Centre
2829 Wisemans Ferry Road, Mangrove
Mountain NSW 2250*

Phone: 4374 1239

www.mountainchildren.com.au

POSITIONS AVAILABLE

SALES - PUMPS & IRRIGATION/
OUTDOOR POWER EQUIPMENT

Think Water Peats Ridge

We are currently offering a great opportunity for an experienced, driven Sales Person to join our small dynamic team. The successful applicant will provide the highest level of customer service and sales support across a range of products including pumps, irrigation, and outdoor power products.

Full time position, please send resume to karen.carrier@thinkwater.com.au

PARADISE BOTANICAL GARDENS in Kulnura is looking for several employees to fill a variety of positions. Casual, part time and full time positions available.

Flexible hours, some weekends, suit Horticultural students, unqualified and or experienced personnel. Will provide on the job training. Apprenticeships in Horticulture considered. Must be punctual, polite, hardworking and willing to work in all weather conditions. We are looking to fill the roles as Gardeners, farm laborer's and landscapers, roles will include and vary between weed maintenance, mowing, Slashing, whipper snipping, irrigation, general gardening, pruning and landscape construction. We also run a wedding venue and Accommodation, so some roles may include housekeeping, event preparation etc. You will be required to work independently and as part of a team. Reliable own transport a must.

If you would like to work in a satisfying, fun, safe and beautiful workplace please contact me for more information.

James Lutwyche
Property Manager

Paradise Botanical Gardens

147 Cherry Lane Kulnura NSW

james@paradisebotanicalgardens.com.au

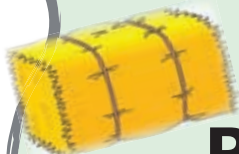
0460 696 941

MANGROVE PRODUCE AND HARDWARE

1668 Wisemans Ferry Rd, Central Mangrove (just 1km from the Crossroads)

**NEW SEASON HAY NOW
IN STOCK**

**PRICES STARTING
FROM \$10 BALE**



- | | | |
|----------------|---------------|------------|
| ◆ Horse Feed | ◆ Fertiliser | ◆ Paint |
| ◆ Pet Food | ◆ Timber | ◆ Plumbing |
| ◆ Bird Seed | ◆ Hardware | ◆ Fencing |
| ◆ Vet Supplies | ◆ Hand Tools | ◆ Electric |
| ◆ Chemicals | ◆ Power Tools | Fencing |

Mon-Fri: 7:30am -5:00pm
Sat: 8:00am -2:00pm

Ph: 43731259

SHOP ONLINE AT
www.tuckersstore.com.au
or shop.truevalue.com.au

CLASSIFIED ADVERTISEMENTS

These columns will be set aside each issue for residents to advertise inexpensively and effectively in their own local paper. If you have anything you wish to sell, buy, swap, etc., ring 4374 1039 or 0412 669 649 during office hours. Rates start at \$4.00.

WANTED

WE BUY going or not going: Cars / bikes / boats / tractors / lawn mowers / machinery / UTV / ATV / caravans, anything. Call us to remove. 0408028908

FOR SALE

GALE'S CITRUS - Bagged Citrus trees in various sizes available ph. 4372 1408 or mobile 0421 196 631

SORGHUM SILAGE \$50 a bale. 0419 412 993

MULCH for sale. 10m³ Minimum - \$400.00. Delivery if applicable. David 0418 233595

DRAINAGE MATERIAL, certified crushed roof tiles. Delivery Charge only. Please phone 0438731015.

WANTED TO RENT

LEASHA CRAIG, professional artist/sculptor plus dog, Samara, seeking a home and studio/shed to rent on the mountain. Honest, trustworthy and reliable. References available from previous 7 year rental at Somersby. Ph 0406 539 407 or Email : artistleashacraig@outlook.com

AGISTMENT

HORSE AGISTMENT AVAILABLE. Full care. Group and individual paddocks with shelters. Full size sand dressage arena, grass jumping arena. Located walking distance to Peats Ridge Village and Café. Call Cameron on 0438695600.

SERVICES AVAILABLE

REGAN'S FINE FOODS

Available to process home kills.
Call Regan to discuss your needs on
0477697329

HORSE RUG REPAIRS - reliable prompt service. Pick-up & drop-off available for large quantities. Ph 0405 620 394

HORSE & LIVESTOCK BURIALS

www.horseburials.com.au
Ph Craig 0411 2888 12

8 TONNE EXCAVATOR FOR HIRE

Tilt hitch, Hydraulic grabs, Auger, Blade, Full range of buckets, Multiple other services available. L & L Kerslake. 43741678 - 0427003721

PEATS RIDGE HAIR CUTS MEN - LADIES - CHILDREN

Wed, Thu, Fri 9am-5pm. Sat 8am-1pm
Walk in - no appt necessary Ph **0447436558**

LAURIE DOUGLASS PLUMBING
Plumber, Drainer, Gasfitter, Roofer -
Ph 4373 1257 Mob 0407 008 488

FENCING AND SLASHING.
Also: FIREWOOD For Sale. David Starkey.
4374 1192 or Mobile 042 725 7948

TERMITE DAMAGE BUILDING REPAIRS

minor to major structural
Mark 0418112630
Email:CCtermite@gmail.com

OOST Painting Contractors - Lic 71725C
Quality & cleanliness assured.
For a free quote call David 4356 1449 or
0417 234 094. Yarramalong Local

PEST CONTROL - Servicing the local area. A.T.S. Pest Control Services Phone Tony 4373 1157 Mob: 0427 731 157

PATRICIA'S HAIR CARE - 15 Woy Woy Road Kariang. Ph 02 4340 1624. Late night Tuesday. Open Tuesday Wednesday Thursday. Ladies/Men/child. Cuts/colours/perms

RURAL FENCING - Post & rail, wire stock, chainwire, colourbond, paling etc. Also Landclearing. Phone Rick 4373 1117

MISTY MOUNTAIN RURAL CONTRACTORS - Earthworks, Irrigation, all services available Ph 43530990 or 0418221495

ANTENNAS - DIGITAL - Specialists with VAST Satellite Service, extra outlets, boosters. Mobile service 4323 6367 or 0412685555

BRICKLAYING & Render repairs. Adrian 0408347737. Lic 98665C

AIRCONDITIONING, BUILDING, CARPENTRY - Local service, 14yrs experience in aircon, 22yrs experience in building & carpentry. Call Ken 0412 842 920

ALL COVERS & CANVAS WORK!
Boats, Vehicles & Horse floats re-trimmed, cover & horse rug repairs, no job too small! Servicing the mountains & the valleys. Call Alan on 0414 993 669 or Louise on 0410 646 200. located at Yarramalong Road Wyong Creek.

TOWN 'N COUNTRY FLOOR SANDING & POLISHING

New & old floor boards, parquetry, verandahs, stairs, walls ceilings, re-coating, staining & painting etc. free quote ph Stuart 0400076261

WATER BORES

Local drilling company
based at Ourimbah

Contact: Paul Slade

Ph/Txt: 0408 471247

email:

Sladedrill@bigpond.com

ELLIS
ELECTRICAL SERVICES PTY LTD
0411 317 506
Commercial | Residential | Industrial

OUTLAND Mechanical & Maintenance Service

Licence No. MVRL54125 ABN 14814837840



Mobile Diesel Mechanic

- Specialising in Small Fleet Diesel Service
- Tractors • Farm Machinery • Mowers
- Earthmoving Machinery
- Welding

John: 0427 660 752 jlhellyer67@gmail.com

Contractors Licence No: 367849C

WATERMAN EXCAVATIONS PH: 0438 617 851

Mulching Horse Arenas Certified Fill

Admin@Watermanexcavations.com.au
www.watermanexcavations.com.au

- Excavators - Tipplers - Grader - Dozer - PoziTrack - 6X6 Dump Truck

CROSSROADS AUTOMOTIVES

Terry Kyriacou

Mon - Fri: 7:30am - 5:00pm

Saturday: 7:30am - 12:00pm

SPARE PARTS

LOG BOOK SERVICES

MECHANICAL REPAIRS

Ph: 4373 1774



Cnr of Wisemans Ferry Rd. & George Downes Drive, Central Mangrove

AUTHORISED INSPECTION STATION (INCL LPG)

MLS MOUNTAIN LANDSCAPE SUPPLIES

SANDS SOILS MULCHES WOOD-CHIPS GRAVELS PEBBLES
PLANT NURSERY - GIFTS - FIREWOOD

DELIVERY AVAILABLE 6 DAYS A WEEK

PH: 4376 1055

988 George Downes Drive Kulnura
mls@live.com.au



GOSFORD IRRIGATION
& WATER SOLUTIONS

• AGRICULTURE • INDUSTRIAL • DOMESTIC

Licence No - 269888C

24 HOUR EMERGENCY CALLOUT SERVICE

Ph: 4322 3333

Fax: 43223433

Email: sales@girrigation.com.au

Web: www.girrigation.com.au

Unit 2 254 Manns Road, West Gosford NSW 2250



K&T PROPERTY CONSULTANTS PTY LTD

Real Estate Valuers & Land Economists

ROBERT MEGGS FAPI CPV

providing independent property valuation advice, including:-

- Stamp Duty, CGT, GST & Retrospective Valuations
- Probate & Estate Valuations • Insurance Valuations
- Valuations for Family Law • Pre-Sale/Auction Advice
- Land Value & Compulsory Acquisition Valuations

500 Kyola Road
KULNURA NSW 2250

Email: ktpropty@ozemail.com.au

Telephone (02) 4376 1451

Facsimilie (02) 4376 1452

Mobile 0429 44 33 10

Misty Mountain Rural Property Development Services



- agricultural consultants
- pasture improvement
- fertilizer spreading
- weed spraying
- all tractor work 4/2WD
- soil conditioning
- irrigation install/design
- fencing & stables
- crop planning & planting & all excavations
- concrete slabs Lic. R94321
- property evaluation & planning & management
- fork lift hire

Ex-Dept. Agriculture Officer with 45 years
experience in the local district.

Greg Koutoulas is the man to call on 0418 221 495



Stop Water Shop

Authorised Dealer

ONGA, DAVEY and
GRUNDFOS PUMPS



K. W. & M. E. WEST Pty. Ltd.

1650 Wisemans Ferry Road,
Central Mangrove

Phone 4373 1164 Fax 4373 1049

PUMP REPAIRS AND SERVICE

Trading Hours

Mon - Fri

7.30 am - 5 pm

Sat 7.30 am - 12 noon

Closed Public Holidays